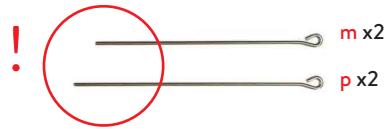
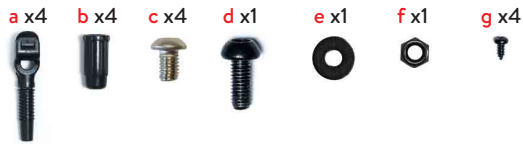


# Kit



# Tools



## VORNE • FRONT



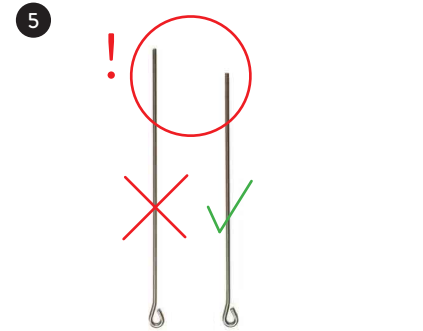
1 Werkzeug / Tool A



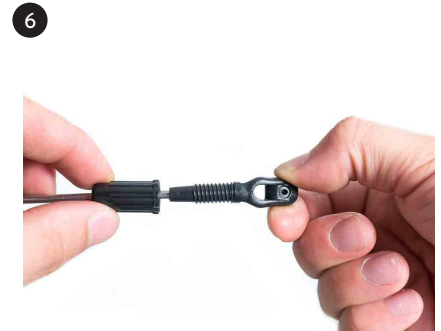
2 anheben & durchführen / lift up & position



4 festziehen mit / tighten with A + B



5 2x m



6 2x: m + a + b



7 links & rechts / left & right



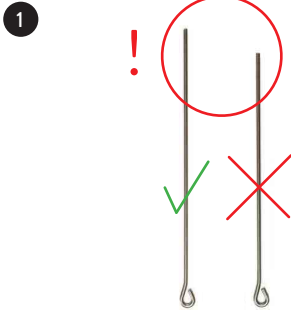
8 2x c + festziehen mit / tighten with A + links & rechts / left & right



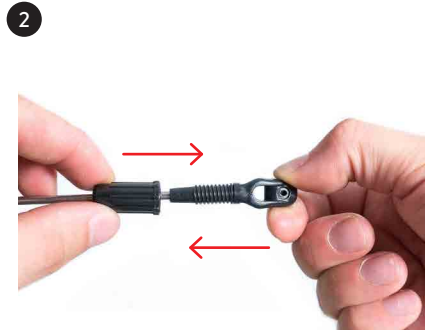
9 2x g + festziehen mit / tighten with D + links & rechts / left & right



## HINTEN • REAR



2x p



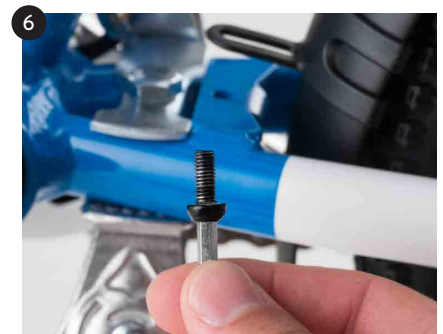
2x: p + a + b



links & rechts / left & right



durchschieben / push through



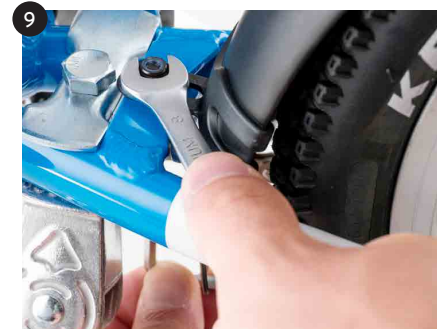
d + Werkzeug / tool A



Werkzeug / tool A



d + e + f



festziehen mit / tighten with A + C



2x c + festziehen mit / tighten with A +  
links & rechts / left & right



ausrichten / align



2x g + festziehen mit / tighten with D +  
links & rechts / left & right