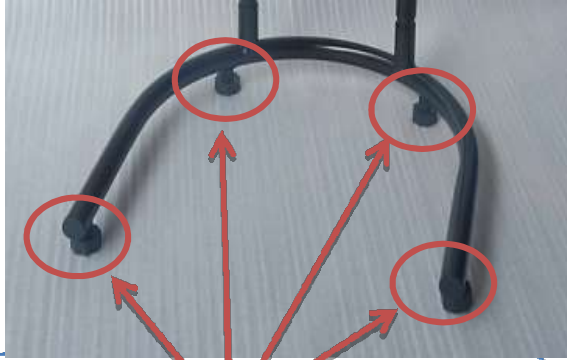
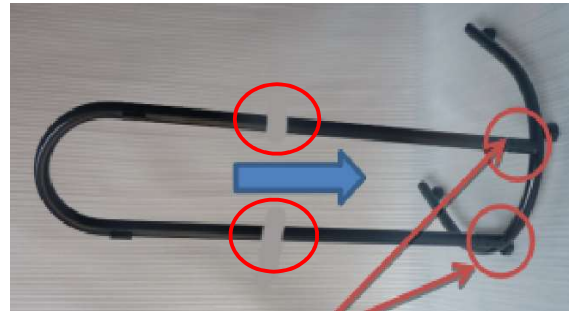


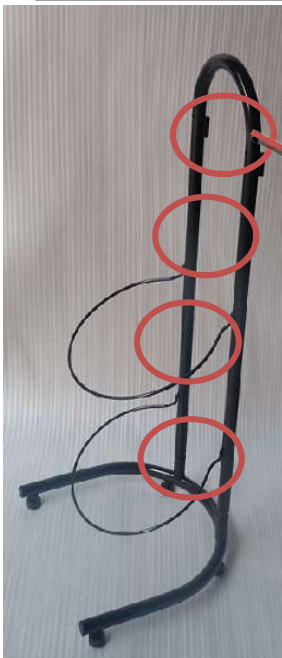
## 4 TIER BASKET STAND INSTRUCTIONS



**Step 1)**  
Assemble 4 levelers.  
Adjust levelers to make sure base is level.



**Step 2)**  
Assemble 2 lower tubes into base by 2 M6 screws.  
Assemble top U frame into lower tubes by 2 M6 screws.



**Step 3)**  
Insert 4 metal wire holders to "U" tube frame.



**Step 4)**  
Place 4 baskets sit onto wire holders and 4 plastic label clips to basket brims .