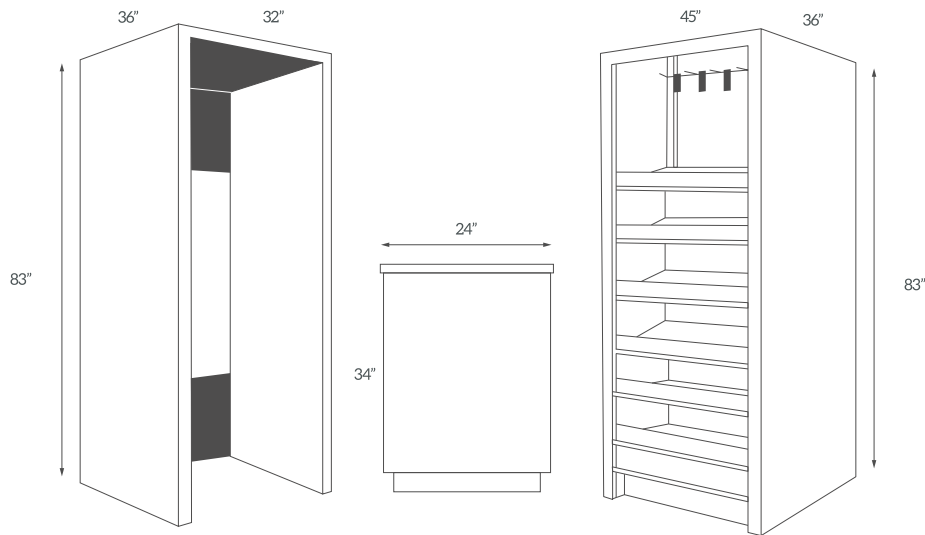


PERFORMANCE



As easy as 1-2-3, the Performance Collection uses Fixturelock (TM) technology to make assembly quick, simple and virtually tool-less. Simply select your snack cabinet size, number of coolers and finish. Fixturelite's retail merchandising best practices and technology include: A black backwall, 5 adjustable wood shelves with merchandising kit, dividers and autoface pushers, hi-lumen LED lighting and leg levelers.

The Retail Display Snack unit is 45"w x 36"d x 83" tall.



Features and Benefits

- » Durable 10 year Warranty
- » Quick assembly
- » Compliments other Fixturelite collections & MinusForty Coolers
- » Freestanding
- » Fixturelite Design Library Software



Accessories

- Cumulative set up dimensions depend on what's included: 83" h x 36" d x various widths available. Snack: 32"/45" (int), Cooler (holds 30" w x 79" t) and 32" (1)/63" (2), Pedestal (w/locking door) is 24" x 24" x 34" t
- Add 3D signage letters for "MARKET" at an additional cost. Please call for details
- Complete your Market setup with Minus Forty Coolers in the Fixturelite configuration



Trim Colors

