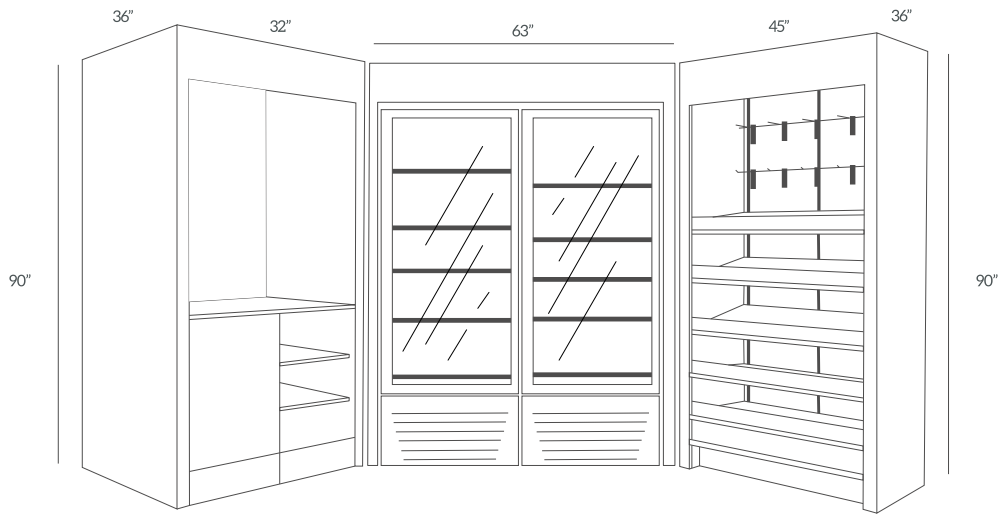


# EXECUTIVE



Fixturelite's flagship product, the Executive Collection, has over 30 combined years of experience and design insight built into it. This is the best set of retail displays available today. It includes everything necessary to ensure a successful consumer experience: double-wall construction, merchandising systems and design elements used in retail best practices, tool-less assembly developed from the feedback of hundreds of installers, a clean, bold look, including a lid, honed from the demands of the many customers who currently have Fixturelite products in their workplaces.

*The Retail Display Snack unit is 45" w x 36" d x 90" tall.*

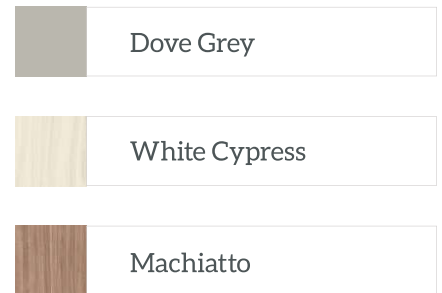


## Features and Benefits

- » Durable 10 year Warranty
- » Quick assembly
- » Compliments other Fixturelite collections & MinusForty Coolers
- » Freestanding
- » Fixturelite Design Library Software



## Trim Colors



## Components

- The Retail Display is designed to present your products in the best possible manner. The display comes with merchandisers to keep your product organized and looking neat, LED lighting to catch the consumer's eye, and shelving to pack out the display densely to maximize space. Height is 90". Available in widths of 32" and 45" and depth of 20" and 36".
- Equipment Surrounds are available for one and two, 30" door setups and support vending machines as large as the Bevmax 4. We recommend the Minus Forty, 22-USG-SS line of coolers and freezers. Surrounds for coolers are 90" high and available in widths of 32" and 63". Depth is 36".
- Enclosures support a coffee, water, microwave, or kiosk station and keep a uniform look within the market space. An optional base cabinet (also sold separately) is included. It has three shelves of up-sell and one locking door. Height is 90". Available in widths of 32" and 45". Depth is 36".
- Rich color finishes are available to match the environment in which it is placed. Side panels, headers, and front trim can be either matched or mixed. The trim kit is available in two depths 36" for the standard micro market setup and 20" if you only need a retail display.
- Countertops offer a rich color to match the environment in which it is placed. Laminate countertops match the trim of the fixtures. Solid surface countertops compliment the trim. Optional splash guards on the sides and back of the solid surface countertop are available.