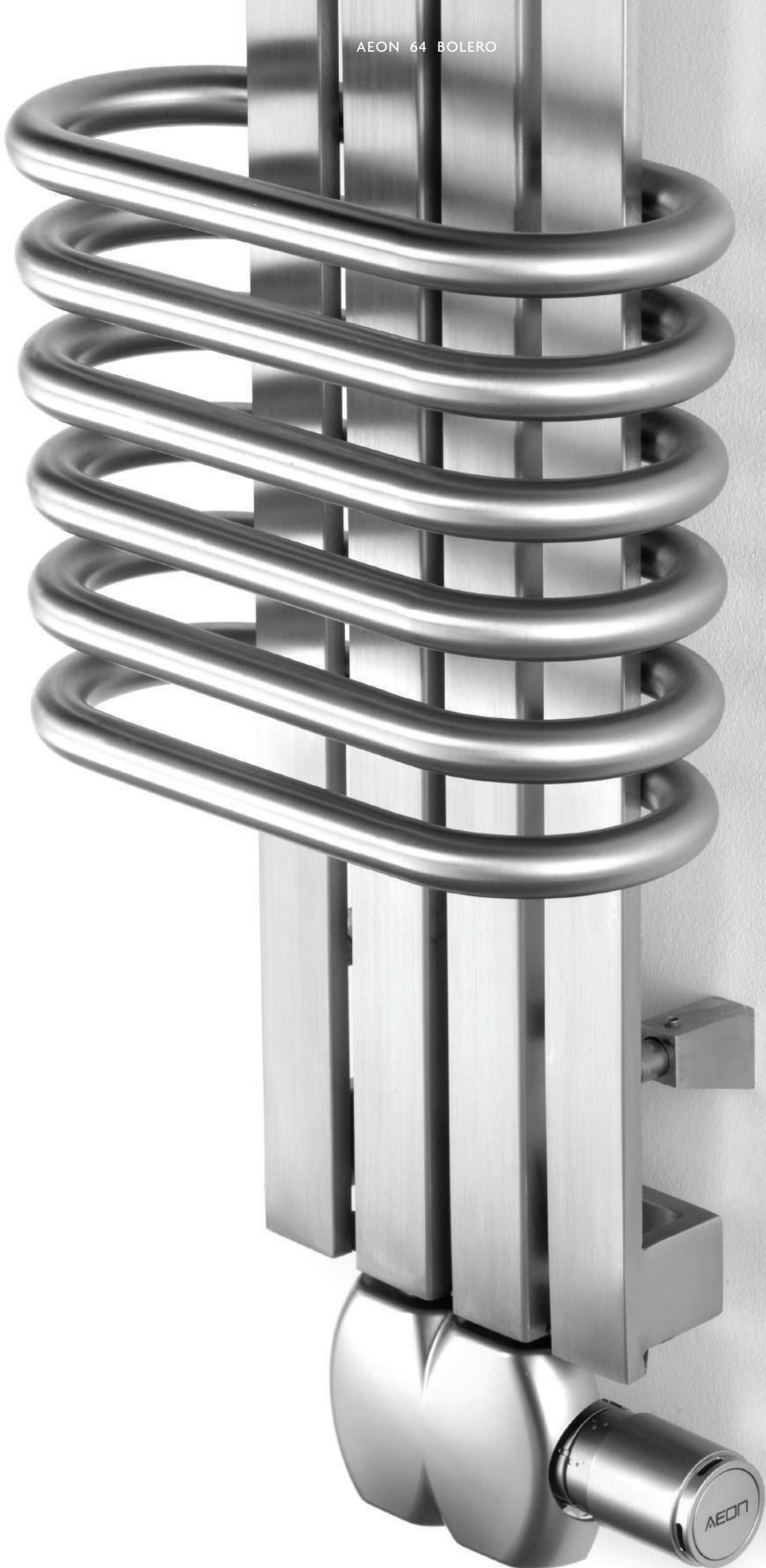


AEON 64 BOLERO





BOLERO

Reminiscent of its passionate Latino namesake. Contemporary design blends bold, angular columns with curvaceous tubular bars. Perfect marriage of performance and beauty.

T R Model shown on opposite page: BOL2-S (brushed matt) Above: BOL3-S (brushed matt)

BOLERO

SS MATERIAL
 10 WORKING PRESSURE
 120°C WORKING TEMP.
 O C OPEN/CLOSED SYSTEM
 V MOUNT POSITION
 20 YEARS WARRANTY

Product Name	Height (mm)	Length (mm)	Depth (mm)	Fuel Options (E/H/D)	Towel Gaps	Pipes or Sections	Heat Output (BTU/w) ΔT 50		E: Electric only		Finish S: Brushed Matt P: Polished
									Choice of Elements (Watts)		
BOL1	630	300	150	E/H/D	1	10	1794	526	300	400	S, P
BOL2	1060	300	150	E/H/D	2	16	3311	971	400	600	S, P
BOL3	1500	300	150	E/H/D	3	22	4839	1419	600	900	S, P

We recommend the 3 Bar Safety Valve for all ELECTRIC ONLY (E) products. Dual Fuel is possible either by use of "T" piece and radiator valve or by use of ONE850 or ONE851 (4 way valve)

