

SEA EAGLE.com[®]



FishSUP

FS126

Instruction & Owner's Manual

For video instructions visit SeaEagle.com/Instructions

Sea Eagle Boats Inc.

19 N. Columbia Street, Suite 1

Port Jefferson, NY 11777

1-800-748-8066

August 2019

Congratulations on purchasing a Sea Eagle!

With over 50 years of experience in designing, selling and using these quality inflatables, we're confident that you are going to love your Sea Eagle and we're ready to proudly stand behind them.

Sea Eagle Warranty

All Sea Eagle products come standard with a 3 year warranty against manufacturing defects. The warranty begins the date that your product is delivered.

Warranty does not cover damage from use, neglect, or abuse such as but not limited to abrasions, punctures and tears.

See complete warranty details at SeaEagle.com/Warranty.

If you receive a damaged item, please call the shipping carrier to report the issue. Do not return damaged merchandise until it has been inspected by the carrier. Sea Eagle will be notified by the carrier when they have completed their inspection and if necessary, Sea Eagle will arrange for the repair or replacement of damaged merchandise.

Decals, Stickers & Registration

Always contact your state boating authorities for information on boating registration and regulations. Most states require you to register your boat if you are using a motor. ****The Sea Eagle FS126 is rated for use with electric trolling motors only.***

Upon registration it may be required to provide the Manufacturer's Statement of Origin. Purchases made through an authorized dealer or reseller may require for you to contact them directly in order to obtain this. You may be charged your own state sales tax if you were not charged sales tax at the time of purchase.

Registered boats generally require for the registration number to be applied to the boat. We do not recommend the use of decals or stickers as they tend to crack and peel over time with the repeated inflation and deflation of your Sea Eagle. Instead we suggest applying these numbers to a small piece of hard plastic or marine plywood and hanging it from your boat like a license plate if permitted by your state. Another method is to apply the numbers to the hull using either PVC based paint or permanent marker.

Contact Us

Unlike many other companies today we pride ourselves on answering the phone and helping you with any concerns, questions or special ordering needs that you may have! Feel free to give us a call at **1-800-748-8066** and we will be happy to talk with you! Our business hours are Monday to Friday from 9AM to 5PM, EST.

Sea Eagle Boats Inc.
19 N. Columbia Street, Suite 1
Port Jefferson, NY 11777
1-800-748-8066
Staff@SeaEagle.com

Safety

In a manual of this type it is impossible to give adequate space to the topic of water safety. For further information on boating safety, visit USCGBoating.org or enroll in a water safety course given by a local provider.

As a safety reminder, each Sea Eagle has a safety summary we call Paddle Boarding Safety Basics printed on it. Please follow these suggestions and use good boating safety practices. In addition to the basics, we suggest you have a reasonable swimming ability and know that it is safer to go boating with a buddy. If you go alone, tell someone your float plan as described below. When possible, plan your trip so you go upwind on the way out and downwind on the way back. Remember, boating is inherently dangerous, appropriate training and experience is required especially in white water.

Boating Safety Tips

- Always wear a USCG approved PFD (life vest) at all times while on the water.
- Be aware of your local boating rules and regulations and abide by them accordingly.
- Check inflation levels each time before you go out and inflate your boat for a full 24 hours before undertaking long trips.
- DO NOT allow children to use your Sea Eagle unsupervised.
- DO NOT consume alcohol while boating or operating a boat while under the influence of alcohol or drugs.
- DO NOT drag your Sea Eagle over pavement or gravel if it can be avoided.
- DO NOT exceed the certified maximum capacities of this boat under any circumstance.
- DO NOT go paddling alone.
- DO NOT use compressors, CO₂ or compressed air for inflation, only use Sea Eagle recommended pumps.
- DO NOT use your Sea Eagle Boat as a personal flotation device as they are not rated for that use.
- DO NOT sleep inside of your Sea Eagle while on the water.
- Bring a fully charged cell phone or other emergency contact device in a waterproof bag.
- Always tell someone of your boating plans.

Safety Equipment & Important Safety Items

Water conditions will determine the type of safety equipment needed. At a minimum have a PFD (personal flotation device) and a whistle for each passenger. PFDs are required by law in most places. White water requires special equipment such as helmets, etc.

Drinking Water & Snacks: Paddle boarding is a physical activity that can deplete your reserves. Have enough water and snacks to prevent dehydration and loss of stamina. Bring enough water for all passengers. Know the warning signs of dehydration and heat sickness such as dizziness and shaking.

Extra Clothes/Layers: Avoid deadly hypothermia. Water conducts heat faster than air, so go prepared with weather proof clothing especially if the water is cold. Use a “dry bag” to store extra clothing inside so they’re not damp when needed. Wear a wetsuit or drysuit when warranted.

First Aid-Kit: Contents of the kit may vary depending on your preferences but be sure to include items that match the hazards you are likely to encounter. A waterproof container is recommended.

Manual Pump/Repair Kit: Although our boats are both durable and rugged, it may be possible that you need to make a repair while on the water in which case you’ll need the repair kit and a manual pump to re-inflate the boat. If this is your first repair, you may also want to bring this instruction manual with you.

Sun/Rain Protection: A hat can protect both your face and head from the rain or sun. Sunscreen will help prevent serious damage to your skin from the sun and the sun’s reflection from the water. Reapply sunscreen as needed.

Whistle: Having a whistle readily available to you in case of emergency is a great way to attract the attention of others if assistance is needed.

Float Plan: Similar to a pilot’s Flight Plan, consider having a Float Plan (www.floatplancentral.org). Always tell someone where you are going to be boating and what time you plan to return. Keep a cell phone in a waterproof container that will float if it falls in the water.

Leash: Use of a leash is recommended for stand up paddling. It is not recommended to use a leash with an electric motor. For use of the board with an electric motor, it is best to allow the board to move away to avoid a propeller strike and retrieve it later.

OPERATING YOUR SEA EAGLE

BEFORE & DURING USE: Avoid damage. Do not drag your Sea Eagle over abrasive surfaces like asphalt parking lots, gravel or concrete boat ramps, whether the board is in its bag or inflated. Carry or wheel your Sea Eagle from the car to the setup point, and then to the water when assembled.

Rocks and sticks usually will not damage a Sea Eagle but be alert for partially hidden or submerged hazards like metal signs, shopping carts and other debris especially during periods of low water. Be careful of docks which may have exposed nails or screws.

FISH SPINES: Many species of fish spines have sharp spines than can cause small punctures in the FS126. Do not allow fighting fish to bump the board. Land fish into the EVA pad.

BALANCE: The simplest way to stand up is from a crouching position. With hands and one knee on the board, push off from the shore bringing the other foot up. Stand up with feet apart approximately shoulder width. Start paddling immediately. Paddling acts like the third leg of a stool to help keep your balance.

Take a minute while close to shore to find your balance. Feel the balance of the board as you begin to gently paddle. If the board begins to roll back and forth, move your eyes to the horizon while holding the paddle out in front you until things settle down. Looking down and side to side can cause you to lose your balance.

In a crosswind, paddle more on the downwind (leeward) side of the board to keep on a straight course. Paddling on the upwind side will cause the board to turn down wind.

The FS126 is rugged and durable enough to be used in surf but is not intended to be used in the surf as a fishing craft.

To avoid being capsized by large boat wake, paddle directly into the oncoming waves. In moving water situations, avoid being swept into low branches or fallen trees and do not hold onto low branches over moving water because both can capsize the board. Make sure bags, coolers, water bottles and other gear are secure so it won't float away if you capsize.

YAW: Yaw is the side to side motion produced by paddling causing the board to zig-zag. To minimize, install the skegs into the base on the bottom of the board. The skegs will improve tracking and are ideal for use in flat water areas like bays, lakes and rivers. In narrow areas like streams, you may need to remove the skegs to make the tight turns required. Remove skegs to cross shallow sections, too.

PADDLING: Most of the power should come from your torso. Your arms contribute, but too much reliance on your arms will cause you to tire quickly. For good balance, keep your head up and eyes focused on the horizon. Start paddling gently and smoothly. As the board picks up speed it will maintain a truer heading. If you dig in hard at first you will create more yaw. Course corrections can be made by easing up or bearing down on one side or the other. Gentle turns can be made by sweeping water behind the board. Sharp turns can be made by using the paddle as a brake on one side. Braking will allow you to maneuver sharp bends in a stream, for example, but kills forward speed.

Motor and Battery Selection and Safety

The FS126 can take a small electric trolling motor. A large electric motor will not appreciably raise the speed of the board. Do not use the FS126 with a gas motor.

A 12v deep cycle marine battery, lithium ion battery, personal watercraft battery or electric vehicle battery is acceptable. The important parameter is the battery's ampere hour (Ah) rating. A Group 24 battery or smaller is recommended.

- To determine the approximate battery life, divide the amp hour rating by the motor amperage. For example, a 60 Ah battery connected to a 30 amp motor will last two hours at full speed.
- Charge battery after each use. Lead acid batteries like to be kept charged.
- Running the battery all the way down will shorten its life.
- Exposure to excessive heat will shorten battery life.
- Cranking amps (CCA) are not a consideration.
- 12v automobile, lawn tractor and motorcycle batteries can be used but will work but are not designed for deep discharge so will wear out more quickly.
- A battery box is recommended especially around aluminum paddle shafts which could cause an electrical short.
- A circuit breaker or fuse is recommended to prevent damage in the event the motor wires are placed on the wrong terminals. Reversing the polarity can cause the wires to heat up, melt the insulation, and cut through the board.
- A 12v battery charger will be needed. Chargers are widely available.
- Choose gel cell over wet cell. Wet cell batteries have liquid acid inside them.

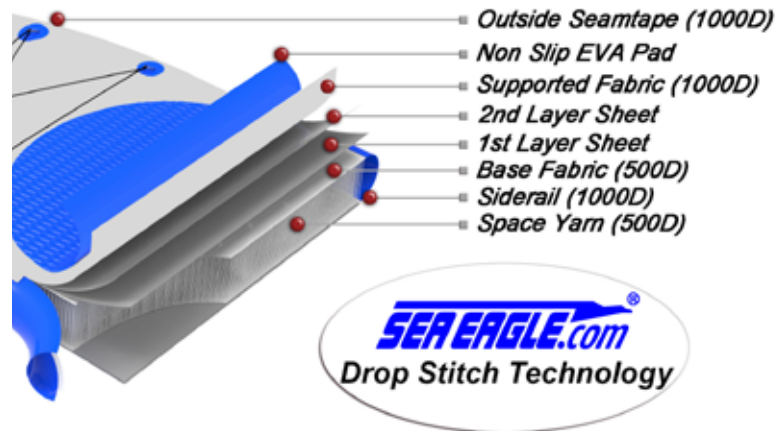
SAFETY, CONSTRUCTION & WORKING PRESSURE

Stand up paddleboarding is challenging and inherently dangerous. Follow safe boarding practices, Be physically fit enough to meet the challenges, prepared for any weather conditions that might be anticipated, and follow the safety basics. Protect all personal items in a waterproof bag. Secure all accessories to the board.

The FS126 is large and stable for a SUP. Keep weight (such as batteries, motors and gear) close to the center as possible to minimize tippiness. We do not offer seat pedestals so as to keep the center of gravity low. When sitting, your ability to compensate for waves, wind and boat wake is more limited than standing.

SUP Construction:

The board is made of drop-stitch material. Dozens of threads per square inch hold the top and bottom layers together and keep the flat-board shape. Without drop stitch, inflatables are tube shaped.



Working Pressure:

In this instruction manual, we use the term “working pressure” to describe inflation pressure. By this we mean, the air pressure needed to make a board rigid enough for use. The working pressure depends on the user’s weight and does not have to be the maximum pressure. When using the manual pump, how much air a user can force into the board also depends on how much the user weighs. For example, a 150 lb paddler may find it difficult to put more than 12 psi into the board and impossible to reach 15 psi, but will find the board to be rigid enough at 12 psi. Adding more air pressure than is needed will not make the board more buoyant nor improve performance.

Compressing air with a pump causes it to heat up. If the water is cold, warm air in the board will shrink and some rigidity will be lost. Allow a few minutes for the board to cool off in the water, and if needed, top it off with a few pump strokes to bring it back up to pressure.

With the manual pump it takes approximately 12 minutes, with rest breaks, to inflate the board. It can be done faster if you are in good shape! Since the object is to get out on the water as quickly as possible, an electric pump is very helpful. A hand pump can also be challenging for those with lower back issues.

Allow the Sea Eagle FS126 to make your life better and more fulfilling. Carve out time to use the board as often as possible. Get the most out of the purchase by using it regularly and frequently. Maintain the board according to Cleaning and Protecting section. Water sports like boarding are communal with nature, healthy, and fun.



Remove the cap to access the valve stem.



Press and turn the stem counterclockwise so it can pop UP. When the stem is up, the valve is closed and will hold air. To let air escape for deflation, press and turn the stem clockwise until locked open.



Double Action Hand Pump

In the double action mode the pump inflates on the up and down strokes. In the single action mode, the handle comes up more easily, allowing the user to push hard on the down stroke. Pump comes with two hoses. Hose with hook-in style adapter and red rubber ring is for board's recessed valves. Hose with smooth darker gray adapter is for Deluxe Green Seat.



Begin in the double action mode for fast fill. Switch to single action when handle becomes too hard to lift.



Screw hose with hook-in style adapter into pump handle and tighten. Firmly push adapter into valve. While pushing adapter firmly into valve, turn adapter to the right to lock it in valve. Note: red gasket may be very stiff at first. Stretch gasket to soften if it is too stiff to engage valve.

Do not inflate board until motor mount is installed.



Locate an area large enough to unfold the FS126 avoiding hazards that could damage the board or injure you.

The motor mount and skegs are easiest to install before inflating the board.



Insert motor mount board between the grommets. Put one washer on each long bolt and push through the grommets and board.

Put one washer on each bolt and screw knob on until tight. Check knobs during use. Tighten, if needed.



Wrap the carry handle pad around the carry handle. The pad can be found in the Orange Repair Kit canister. The carry handle is a one-time installation.



Skegs

Three skegs are included with the board. Any combination of skegs can be inserted into the bases on the underside of the board.



Slide the skegs into the bases and secure with the clip. If a skeg will not slide into its base, do not force it. Refer to instructions page 13. The bases have strings attached so the skegs can be tied to the board.



When ready to inflate, insert the adapter into the valve, turn it to the right until it is fully seated and then begin inflation. Valve stem should be in the **up** position



The pressure gauge will not begin to register until the board begins to get pressurized. Pump until the working pressure of between 12 and 15 PSI is reached. **Do not exceed 15 PSI** when inflating. Inner scale numbers are PSI. Outer are bars (metric).



Motor and Battery (OPTIONAL)

Clamp electric motor to motor mount before mounting battery. Secure battery by running the Sea Eagle strap with buckle through the D-rings. Strap stretches when wet, check strap frequently.



Fish Rig (Included in all packages except Start Up & Deluxe)

To assemble and install the Swivel Seat Fishing Rig, please refer to the supplemental instructions at the end of this manual. One or two Fishing Rigs can be used.



Paddle Pocket

The paddle pocket at the front of the foot pad. Insert the blade when carrying the board or walking into the water.



Deluxe Green Kayak Seat (DKSG) Included in the Deluxe Package

The inflatable seat has two internal bladders, two one-way air valves and two straps with clips for securing the seat to the D-rings.



**One-Way Air Valve
(Found only on DKSG)**

Tether the valve onto the valve bases by stretching the retainer rings to fit over the groove in the bases.

Note: Stretch the rings or use a hairdryer or hot running water to warm ring if too tight.



Screw valves into their bases. Tighten valves very firmly to avoid deflation when sitting on seat.



Locate red pump hose with smooth gray adapter pre-installed in hose. Screw hose into pump handle and tighten. Only the largest adapter is need, pointy inserts are not needed.



Insert hose into valve opening and pump until comfortably firm. Gauge will not move because pressure is too low to measure. If necessary, unzipper cover to adjust bladders. Zipper is under seat base. Screw covers on and tighten.



Stand Up Paddle

This adjustable paddle has a T-handle, shaft and blade. Insert the blade into the shaft and align the hole with the button to lock in place. Insert the T-handle and adjust to the desired length using the locking nut.



Flip up the lever lock to adjust height. Flip down to lock.



Adjust to your height. Stand paddle on ground with arm up. Handle should fit in palm of hand (about 9" above your head).



**Kayak Paddle
(Included in all packages except the Start Up.)**

The asymmetrical spoon blade design of this kayak paddle will allow for a smooth entry and an even pull, maximizing the power from each stroke. They will also require less gripping force.



Put the shaft together first. Insert the shaft piece with the button into the piece with three holes. Lock the button in the middle hole.



Next, slide the drip guards up the shaft to about an inch above the button hole. Insert the blades into the shaft and adjust until the button locks the blade in place.



The additional holes in the shaft are for "feathering" the blades. Blades can be offset 45° from each other. This makes paddling into a stiff breeze easier as the blade that is not in the water will be able to slice through the wind with little resistance.

Start Up



Deluxe



Fish Rig



Pro Motor Fish Rig & Ultimate Package



Ultimate 2 Person



Green Machine

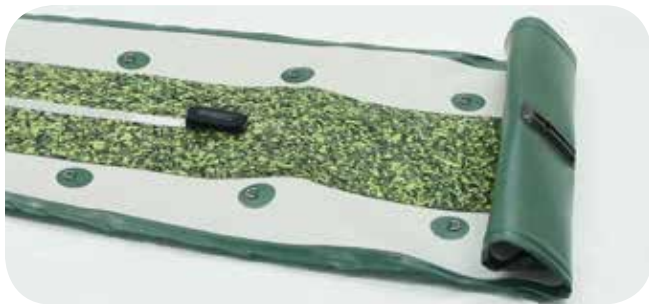


FishSUP | DEFLATION



To deflate, push down on the valve stem and quarter turn it to the right. The stem will stay in the down position, allowing the air to escape.

Warning: Air escapes with force, do not place face directly over valve.



Make the first fold over the motor mount. Tuck the rear tips under and bring skeg base on top.



Continue folding all the way to the bow, squeezing air out as you go.



Place the folded board in the backpack carry bag.



The FS126, pump, AB30 kayak paddle, skegs, two rod holders and Fishing Rig frame (minus seat) are packed in this bag.

FishSUP | CLEANING & PROTECTING

Dry after each use to avoid mold. **While washing or rinsing: close the valve and twist the cap on so water cannot not enter the chamber.** Sea Eagles can be cleaned very effectively with general purpose cleaning products and a scrub brush. Towel dry.

Protection from the Sun and Heat

Avoid leaving the board in direct sunlight when ashore. Temperatures on a beach, dock, davit, etc. can get very high, which could affect the vinyl or glue. Excessive exposure to sun and heat can cause your Sea Eagle to become sticky or cause the glue to fail.

Treat the board with a UV protectant such as 303 Aerospace Protectant. Generally, protectants are a thin film of oil, which will help keep your Sea Eagle clean. Avoid applying protectant on the EVA pad or places where foot traction is needed. Treated board will repel sand, water scum and tar stains.

FishSUP | STORAGE

If you're planning to leave your Sea Eagle outside, keep it raised off the ground and covered so it is not exposed to sunlight, rain, leaves, berries, bird droppings, etc.

Storage Tips: *"The best way to store a Sea Eagle is folded up in it's bag". - Cecil Hoge, Jr., Sea Eagle President*

- Check for water in the chambers. Water will leak out of open valves when it is rolled up.
- Water left inside can leak out and cause a lot of mold. Dry thoroughly to prevent mold.
- Rodent-proof the storage area. Mice, squirrels and other small rodents can do a lot of damage.
- Avoid excess heat. Do not store in direct sunlight, in an attic or a metal shed.
- In temperatures below freezing, do not drop, strike or

unroll until it is brought to room temperature.

- It can be stored inflated. If hung, support it along its length.
- After storage, inspect for loose items, damage and leaks. Avoid excess heat. Do not store in direct sunlight, in an attic or a metal shed.

FishSUP | TROUBLE SHOOTING

If your Sea Eagle has lost pressure, it does not necessarily mean it is leaking. If it is inflated during the heat of the day and the temperature drops during the night it will be softer in the morning. If launching in very cold water, the air inside may contract and cause a loss of pressure. Add more air to restore to full pressure. If temperature is not a factor and your boat is losing air pressure, it's time to look for a leak.

Step #1. LOOK

Visually inspect the boat close up and if necessary, flip it over and closely check the outside. Any large leaks when your boat loses a considerable amount of air should be clearly visible.

Step #2. LISTEN

If you have a rough idea of where your leak is but can't see it, you may want to try listening for it as you may be able to hear the air escaping and pinpoint the leak.

Step #3. TIGHTEN

Check the tightness of the one-way recessed valves as well and if necessary, tighten them with the valve wrench included in the repair kit canister.

Step #4. SOAPY WATER TEST

You'll need a bucket and liquid dish washing soap. Fill the bucket with clear water, and add a good squirt of soap (couple of tablespoons) to the water. Inflate the leaking chamber to full pressure. Spread lots of soapy water on the leaking chamber with a hand towel or large sponge. Don't assume the leak is coming from the valve or seams. The leak may produce bubbles, make hissing or sputtering noises, or spray water. Spray bottles are not effective at locating many leaks.

FishSUP | REPAIRS

Even though Sea Eagles are very rugged and tough, you may still experience the occasional puncture. Fortunately most repairs are fairly easy and only take a few minutes. For extensive repairs, please contact us directly to provide you with further assistance. The best way to do this is to e-mail us a digital photo of the area in question along with your hull identification number to staff@seaeagle.com.

You can also call us directly at **1-800-748-8066 ex. 314** and ask to speak with Technical Support for further assistance or a quote for having your boat mailed to our facilities for our professional repair services.

Sea Eagle repair fees start at \$75.00 and does not include return shipping charges. Please note that Sea Eagle does not service any other brand other than our own. All items sent to our repair facilities must have prior authorization in the form of a Return Authorization Number.



Repair Kit

All Sea Eagles come standard with a repair kit which includes PVC patches and PVC glue. Repair kits also include a valve wrench.



PVC Based Glue

To patch your Sea Eagle, use an adhesive for PVC boats. Plumber's cement, epoxy, Flex Seal, waterproofing sprays and Gorilla Glue do not work.



Pinholes

Deflate the board and thoroughly clean and dry the area that is to be repaired. For small punctures less than 1/8" apply a small drop of glue and allow 24 hours to cure.



For immediate use allow 30 minutes to dry and then inflate the compartment only 3/4 full and if necessary make a more permanent repair later.



Patching

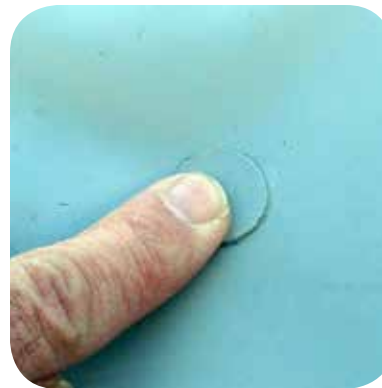
The most common repairs are a puncture or small cut. A penny size patch is sufficient for repairs of this type.



Trace the outline of a penny on the patch material and cut using scissors. Trace the outline of the penny on the boat. Coat the patch and boat with the repair kit glue.



If you have access to electricity, heat the glue with a hair dryer then apply the patch. This method produces the best results. Mate the patch to the board and smooth down until the patch adheres. Do not inflate, allow at least 24 hours to cure before inflating.



Mate the patch to the boat and smooth down until the patch adheres. Do not inflate, allow at least 24 hours to cure before inflating.

Patching Tips:

- The chamber must be deflated or the air will force a patch through the glue.
- Keep the patch size to a minimum, the bigger the patch, the harder it is to seal. The most common repair failures occur because the patch is too big.
- For repairs larger than a puncture, overlap the damage area by about 1/2" on each side.
- Do not apply the patch while the glue is wet.
- Covering a leaking patch with another patch rarely fixes the problem. To remove a patch, heat it with a hair dryer and peel it off.
- **Never** use a heat gun on your boat.
- Clamps and weights are not needed.

For a demonstration of good patching technique, please view the **How to Repair** video on the instruction page of our web site. There is a link at the bottom of every page at SeaEagle.com or type "instructions" into the search box.

Warped Skeg or Skeg Base

If the skeg base is bent from storage or use, heat it up with a hair dryer and bend it back into shape. It will hold it's shape after it cools. If not folded properly, the base can get warped in storage. Never hammer the skeg into a warped base as it will break the base.



Sea Eagle offers a large array of accessories for your FishSUP.



Personal Flotation Devices (OPTIONAL)

U.S.C.G. approved. Life jackets, paddling vest, PFD Belts available in various sizes.



Life Jacket Whistle (OPTIONAL)

Bright orange whistle can clip onto your life jacket or used with the included lanyard to hang around your neck or wrist. Whistle has no parts or balls that can jam or corrode.



See-me Safety Light (OPTIONAL)

Coast Guard approved LED personal safety light emits a 360° light visible up to 3.4 miles. It also attaches to a PFD!



BTP Turbo Electric Pump (OPTIONAL)

These electric pumps come with a nylon shoulder carry bag, 12V DC power cord, hose and adapters.



EZ Cart Small (OPTIONAL)

Transport your SUP from your car to the water and back with ease. Quickly assembles & disassembles.



303 Protectant (OPTIONAL)

Extends the life of your Sea Eagle. Simply spray on every 30-45 days to improve resistance to UV, chemical & other types of harmful exposure.

Contact Us

Unlike many other companies today we pride ourselves on answering the phone and helping you with any concerns, questions or special ordering needs that you may have! Feel free to give us a call at **1-800-748-8066** and we will be happy to talk with you! Our business hours are Monday to Friday from 9AM to 5PM, EST.

Sea Eagle Boats Inc.

19 N. Columbia Street, Suite 1
 Port Jefferson NY 11777
 1-800-748-8066
 staff@seaeagle.com



19 N. Columbia St., Suite 1, Port Jefferson, NY 11777
Tel. 631 473 7308 - Fax 631 473 7398
SeaEagle.com

Swivel Seat Fish Rig (SSFR) FS126

Assembly Instructions Single and Dual

Kit Includes: Aluminum base assembly, folding seat with swivel plate, Scotty Baitcaster Rod Holders with push button mount, pedestal, and hardware.



Seat/Base Hardware

- 4 1" Hex Head Bolts
- 4 Wingnuts

Rod Holder Screws

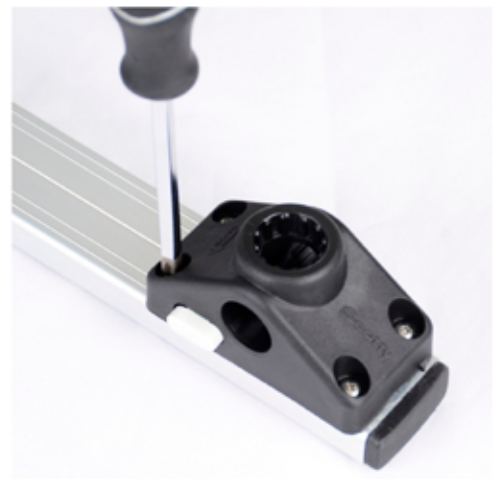
- 8 #6 x 1" Phillips Head
- Straps** 2 - 4' Straps with Buckles

Tools Needed: Drill with screwdriver tip or #2 phillips head screwdriver.
7/16" Wrench for hex head screws

One-Time Setup

Scotty Rod Holder bases to rear rod holder crossbar.

Use the phillips head screwdriver to screw Scotty bases onto rod holder bar with #6 stainless steel screws. This is a one-time task. This step is easiest done with the drill and screwdriver tip.



Attach seat to aluminum H-frame plate. Run hex bolts up through swivel base. Tighten wing nuts onto bolts.



Place the Fishing Rig between the rear D-rings.

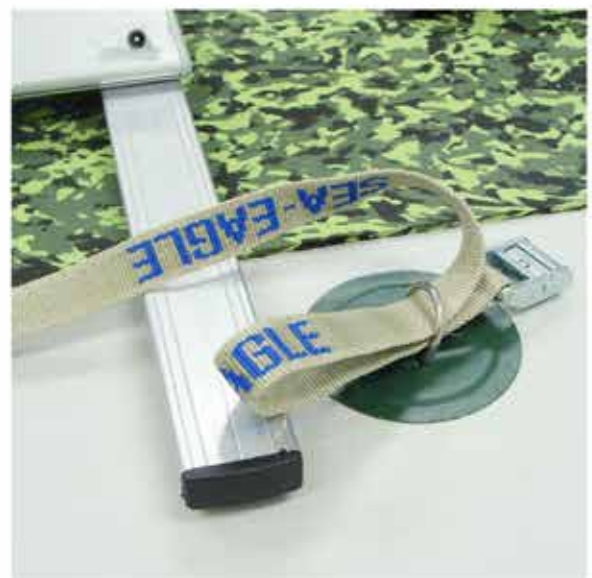


Secure Frame to FS126

The idea is to make two loops in the strap to secure the front and rear bar.

Make a loop with the buckle upside down.

Push it through the front D-ring towards the front bar.



Bring the loop around the bar.



Pull the free end toward the rod holder bar.
Pull the strap tight around the bar.



Make a loop with the free end of the strap.
Run it under the bar and through the D-ring.



Move the loop so it can go around the bar and rod holder base.



Slide the strap under the bar and over the rod holder base.



Pull the strap tight and run the free end through the buckle.



Push the extra strap length through the rear of the buckle.

CAUTION: Straps can stretch when wet. Wet the strap before leaving shore and tighten. Check frequently and as retighten as needed.



Scotty Bait Caster Rod Holder



Install

To install rod holder in the mount, push stem into base until it clicks in.

Rotate or Remove

To rotate or remove rod holder from mount, press **white button** and pull rod holder upward.

Rod Angle

To adjust the rod angle, loosen the large **black knob** on the side until the teeth clear the grooves. Adjust angle and retighten.

Single Swivel Seat Fishing Rig



Double Swivel Seat Fishing Rig

Attach pedestal to swivel seat base.



Next, attach seat/pedestal to frame base plate.



Place seats as shown here. Use stepping method described for single seat.

