

The logo consists of the letters 'P' and 'H' in a bold, black, sans-serif font, separated by a vertical line. The letters and line are contained within a white square with a black border.

**P | H**

**POWER HOUSE**

Fountains | Aerators | Ice Eaters

A large, energetic water fountain is the central focus, spraying water high into the air. It is situated in a calm pond. The background features a lush green field with a row of evergreen trees, and a dense forest of deciduous trees under a blue sky with scattered white clouds.

**ENERGY EFFICIENT & ENVIRONMENTALLY FRIENDLY**  
*2019 MASTER CATALOG*



*"As the owner of a cutting-edge aquatic management company, I came to the realization very quickly that we were more than just a company that manages water. Client's expectations were that we also would handle the needs of fountains and water aeration systems. The biggest challenge was not only finding high-quality, but also affordable systems. I wanted a company that would work with us, provide the best service, and knowledge about those fountains. I'm elated to say The Power House, Inc. fountains has fulfilled our needs and more. Their hands-on approach to the construction of their high-quality fountains, made with years of knowledge and professionalism, is second to none. I highly recommend them to anyone."*

- John Turner  
owner of TurnPro Aquatics

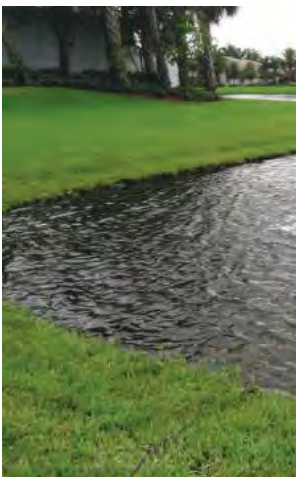


*"The Power House, Inc's Olympus Fountains, Aerating Fountains & Ice Eater's have become significant lake management tools within our operation. Reliable performance, low operating cost & competitive prices have produced many satisfied customers & successful water quality improvement initiatives."*

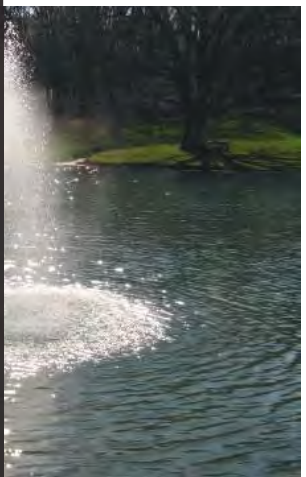
- Brian Weber  
Absolute Aquatic Weed Control, Inc







<b>CONTENTS</b>	
<b>A FINAL LETTER FROM OUR PRESIDENT</b>	<b>1</b>
<b>FOUNTAINS</b>	
<b>NEW - FIXED BASE SHALLOW POND</b>	<b>4-5</b>
<b>OLYMPUS SERIES DISPLAY FOUNTAINS</b>	<b>6-9</b>
<b>AERATORS &amp; FLOW GENERATORS</b>	
<b>AERATING FOUNTAINS</b>	<b>10</b>
<b>SURFACE AERATORS</b>	<b>11</b>
<b>FLO-RATION</b>	<b>12</b>
<b>NEW - FLO-GEN</b>	<b>13</b>
<b>ICE EATERS</b>	<b>14-15</b>
<b>LED LIGHTS</b>	
<b>LED FOUNTAIN LIGHT SET</b>	<b>16</b>
<b>NEW - 18-WATT LED ACCENT LIGHT FIXTURE</b>	<b>17</b>
<b>PARTS &amp; ACCESSORIES</b>	<b>18-19</b>
<b>FREQUENTLY ASKED QUESTIONS</b>	
<b>INSTALLATION &amp; OPERATION</b>	<b>20</b>
<b>REPAIRS &amp; SERVICE</b>	<b>21</b>





# FIXED BASE SHALLOW POND FOUNTAINS

The costs of installation and maintenance of elaborate fountain systems in concrete ponds and decorative pools can become quite expensive. We've solved this issue by utilizing the simplistic nature of our low cost, low maintenance .33HP Olympus Series Display Fountain. We removed the float, mounted it to a custom designed PVC base and brought it to the world of shallow water. This new fountain can sit stationary in water as shallow as 18", and we offer 6", 12", and 18" extensions to allow for depths up to 36".

There are 3 exclusive nozzles specifically made for narrow fountains, but all of our traditional .33-HP Olympus nozzles look great on our Fixed Base Shallow Pond Fountain!

(2) 6-Watt White LED or (3) 3-Watt Color Changing LED Fountain Light Sets are available as well.



Fixed Base Shallow Pond Fountain with Pontus nozzle in Greensburg, Pennsylvania

- Perfect for smaller water features
- Easy to install and maintain
- 3 exclusive nozzles specifically for narrow fountains
- Motor:
  - 1/3-HP stainless steel
  - 7.9 running amps
  - 115V or 230V 60 Hz available
  - 3,450 RPM's
  - 14/4 UL rated cable
  - Quick disconnect power cord
  - Requires 15 Amp GFCI breaker
- Extension Tubes allow for 18" - 36" depths
- Available with (2) 6-Watt White LED or (3) 3-Watt Color Changing
- 2 Year Warranty



# OLYMPUS SERIES DISPLAY FOUNTAINS

Since 1976, The Power House, Inc. has manufactured durable, dependable, energy efficient equipment that serves the marine, aquaculture, golf course, waste water, & landscaping industries with diligence & without fail.

Never straying from our belief in building simple, reliable, and cost effective equipment; we focused our efforts to adding the Olympus Series Display Fountains to The Power House, Inc. line.

We strive to manufacture sturdy fountains that require low horsepower and low running amperage without sacrificing height and diameter.

Comparable brands require more horsepower and significantly more power consumption to achieve the same results. Out of the box, and into the water; each unit is shipped ready to install and easy to maintain. See which of our 10 patterns is perfect for your waterscape.



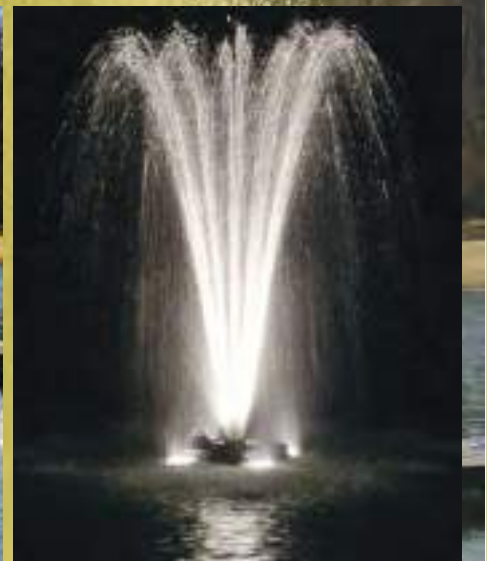
1.5-HP Artemis set up in Crofton, Maryland

## ZEUS

Back by popular demand!  
Combining aesthetics with aeration, the Zeus creates a striking pattern with a full and heavy spray.

1.5-HP 13' H x 12' D

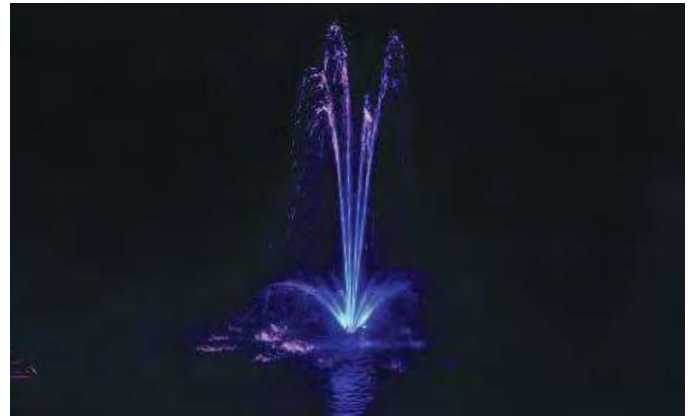
3-HP 17' H x 10' D





## AURORA

2 very distinct tiers, Aurora's low lying umbrella & high rising center trumpet streams create a lovely daffodil profile.  
**.33-HP** 8' UH x 2'-6" LH x 10' D



## EROS

Simple in design, Eros' classic crowning profile not only provides elegance, but heavy consistent streams of water flow throughout the entire body.  
**.33-HP** 8'6" UH x 7' LH x 15' D



## HERMES

Maintaining its balance and symmetry, the 10 heavy streams create a strong full bodied geyser.

**.33-HP** 11' H x 7' D

**1-HP** 15' H x 5' D

**3-HP** 22' H x 5' D

**.5-HP** 13' H x 5' D

**1.5-HP** 22' H x 5' D



# AERATING FOUNTAINS

Sometimes the appearance of the pond is as important as the need for efficient aeration. For these instances we offer two models of aerating fountains. The 1/2-hp F500F produces large even goblets of spray in an eye pleasing circular V-shaped pattern that is 4' high and 15' in diameter, and can operate in only 14" of water. The 1-hp F1000F aerating fountain offers even more. This model throws a dazzling array of large dancing goblets of water 6' high and 21' in diameter. These fountains are comparable to many on the market, but use half of the electrical power as most. All models are lightweight and portable, but as rugged as they come (see specifications). In addition, the beauty of either of these models can be enhanced by our accent lighting.



**F1000F set up in Hampstead, Maryland**

## **Model F500F**

4' high, 15' diameter

- 1/2-hp Energy Efficient PSC Motor
- 5 amps, 115 Volt, 50/60 cycle
- 2.5 amps, 230 Volt, 50/60 cycle
- 106 GPM (gallons per minute)
- Minimum Depth 14"
- GFI required
- Cord Lengths available: 50', 100', & 150' (200', 250', 300', & 350' available in 230V)

## **Model F1000F**

6' high, 21' diameter

- 1-hp Energy Efficient PSC Motor
- 7 amps, 115 Volt, 50/60 cycle
- 3.5 amps, 230 Volt, 50/60 cycle
- 130 GPM (gallons per minute)
- Minimum Depth 14"
- GFI required
- Cord Lengths available: 50', 100', & 150' (200', 250', 300' & 350' available in 230V only)
- F1000F is available in 3-phase, 230V unit, upon request



**shown with (2) 18-Watt White LED Lights and Blue Lens**



**shown with (2) 18-Watt White LED Lights**



**shown with (2) 18-Watt White LED Lights and Green Lens**



# FLO-RATION

The paddlewheel has been a long-time industry standard in aquaculture. Dating back to ancient times, it primarily uses a slapping or churning motion with the paddles to create air-to-water contact to transfer oxygen from the air to the water. The main problems with the paddlewheel are its high-energy use, inability to completely mix deeper ponds, and the heavy splashing can lead to unequal temperatures and dissolved oxygen.

Flo-Ration, built to outperform the traditional paddle wheel, is unlike anything else on the market. With Flo-Ration, we have a viable tool for those needing more than just one solution to maintain health and productivity. Flo-Ration is a multi-positional aerator, designed to change angles depending on your needs. Unlike the traditional paddlewheel, which just moves the first few inches of water into the air, the Flo-Ration draws water upward from below the surface, through the cylinder and, depending on the angle, creates a better water flow or breaks the surface of the water column to transfer more dissolved oxygen.



## **Vertical**

SOTR: Lb<sub>02</sub>/Hr 2.35

Great for smaller bodies of water. A single unit is perfect for 1 acre of water or less. Water is constantly circulating, giving this aerator the ability to destratify and create high levels of dissolved oxygen for your pond.



## **45 Degrees**

SOTR: Lb<sub>02</sub>/Hr 2.35

The aerator is always churning up new water and forcing freshly oxygenated water out to other parts of the pond, easily generating enough oxygen for 1-3 acres of water. For larger bodies of water consider placing several in a row for even better current flow.



## **Horizontal**

SOTR: N/A

Pumping at an incredible 1379 gallons of water per minute. The main function of this position is to create a turbulent current and constant movement within the waters that are often too calm to maintain healthy aquatic life.

- **Go from Murky Waters to Clear Waters & Healthy Fish**
- **3 in 1 Aerator - Unlike Anything Else on the Market**
- **Change Angles in a Few Simple Steps**
- **Breaks the Surface of the Water Column to Create Oxygen Bubbles and Transfers Dissolved Oxygen**
- **Uses the Same Motor Assembly as our Industry Leading F1000DP (1-HP) Surface Aerator**
- **2 Year Warranty**

**BUILT TO OUTPERFORM  
THE PADDLEWHEEL**





# ICE EATER

The Ice Eater is designed to prevent ice from forming and melt existing ice around boats, marinas, docks, and piers. The design of the Ice Eater's venturi shroud (housing) with outwardly flared ends and custom designed propellers provide more upward thrust & draw warmer water from greater depths than other conventional de-icers. Together they break the surface with a continuous current of warmer subsurface water.

Unlike other de-icing units, the Ice Eater requires no additional hardware in order to obtain the desired de-icing pattern. Ice Eater is shipped complete with mooring lines. It can be taken out of the box, hung from a boat or pier, and plugged in.



## All Models Come With:

- 50/60 Hz energy efficient, high quality motor
- Quick Disconnect Power Cords (available lengths 25', 50', 100', 150', 200')
- Two 25' x 3/8" mooring lines (hollow braided polypropylene lines with shackles)

Model	HP	Volts	Phase	Open Diameter	Use
P250	.25	115/230	single	20' - 25'	For Small Boats & Light Ice
P500	.5	115/230	single	40'	For Small Boats & Individual Slips
P750	.75	115/230	single	60'	For Mid Size Boats
P1000	1.0	115/230	single or 3	80'	For Large Boats & Marinas

**NOTE:** Open diameter based on normal winter conditions

## DOCK MOUNTS

Our dock mount is the premium option to consider for positioning your Ice Eater. Make your placement more secure than suspension lines, and unaffected by the current.

- Fits The Power House, Inc. Ice Eater® models: P500, P750, & P1000
- Adjusts Ice Eater® angle in 20° increments from horizontal to vertical with full 360° positioning
- Steel mounting base, bail & pipe holder are all powder-coated twice to protect against corrosion
- Includes mounting base, bail with clevis pins & clips, pipe holder with nuts & bolts, and tightening handle
- Maximum pipe length is 6' to provide secure mounting & prevents pole from bending
- Pipe is not included (due to shipping limitations); 1" galvanized or stainless steel is recommended.
- Stainless steel pipe should be used for salt water applications
- Customer to provide appropriate lag screws or u-bolts to secure mount to dock, piling, pole or bulkhead



# LED FOUNTAIN LIGHT SET



The Power House, Inc. offers beautiful LED lighting accents for our fountains and most of our aerators. As always, we keep our customers needs in mind: creating easy-to-use, durable, energy efficient solutions for nighttime illumination. We offer packages that are available at the time you originally purchase your fountain/aerator or you can easily ask about retrofitting your unit at a later point in time. All of our options are affordable, plus they will undoubtedly increase the property value and aesthetic value of your landscape.



## 3-WATT COLOR CHANGING LIGHTS

115V or 230V - Transformer included

7 Colors: red, yellow, green, aqua, blue, purple & white

4 Pattern settings to auto change colors

Fits most aerators, all aerating fountains & 1/3-Hp Olympus

## 6-WATT WHITE LIGHTS

115V or 230V - NO Transformer required

Brilliant White Light (colored lenses available)

110 Lumens per Watt

2 Fixtures fits .33-Hp Olympus & our

NEW Fixed-Base Shallow Pond Fountains

## 18-WATT WHITE LIGHTS

115V or 230V - NO Transformer required

Brilliant White Light (colored lenses available)

110 Lumens per Watt

2 Fixtures fits F500F, F1000F, .5-Hp Olympus, & 1-Hp Olympus

3 Fixtures fits 1.5-Hp Olympus, & 3-Hp Olympus

## COLORED LENS

### Add Color to Your Fountain

These lenses are easy to install & change.

Mix & match colors for events and holidays.

### Lost One? We sell them!

These lenses and clips can be purchased separately.

That way you only buy what you need

### Available in 8 colors

Dark Blue, Dark Green, Dark Red, Dark Yellow, Amber,

Light Blue, Florescent Red, Florescent Yellow





# PARTS & ACCESSORIES



**20002 Propeller** - fits F250 & P250



**20001 Propeller** - fits F500 Aerator



**20006 Propeller** - fits P500 Ice Eater



**20005 Propeller** - fits P750 Ice Eater



**20000 Dual Propeller - Upper**  
Fits F750DP, F1000DP, & P1000



**20004 Dual Propeller - Lower**  
fits F750DP & F1000DP  
(cotter pin included)



**30000 Prop & Disc** - fits F500F & F1000F  
Aerating Fountain



**20100 Brackets** (set of 4)  
**Small** - fits Aerators F250,  
fits Ice Eaters P250, & P500.

**20200 Large** - fits Aerators F500, F750DP,  
F1000DP, F500F, & F1000F.  
fits Ice Eaters P750, P1000,



**20300 Aluminum Brackets** (set of 4)  
Large - fits P750 & P1000  
Special Request for extreme  
conditions  
Fresh water only



**26100 P1101 Timer** (115V)  
Outdoor rated & raintight flip-open  
enclosure works on all TPHI 115V  
equipment



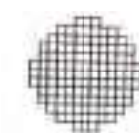
**26200 T104P Timer** (230V)  
This heavy duty timer works on all  
TPHI 230V equipment



**Thermostat**  
0°F - 80°F temperature range  
**KT16110 115V** - Plug & Receptacle for  
in-line use  
**KP16220 230V** - Hard wired only



**24110 Compact Cages** - fits F250  
**24100 Square Cages** - fits F500,  
F750, F1000, F750DP,  
F1000DP, F500F & F1000F



**Screen Kit** (Turtle Guard)  
**24400** - fits P500  
**24500** - fits P750, P1000  
F500, F750DP, F1000DP



**24901 Aluminum Anode**  
\*allen wrench included  
(for use in salt water)



**26000 Electrolysis Kit** - for areas of  
high salinity, high electrical  
current and/or warm waters



**24600 Shackles** - (set of 2)  
1/4" stainless steel shackles  
with a 9/64" short arm hex key



**Mooring Lines**  
(3/8" thick hollow braided  
polypropylene ropes)



**34300** (2) 25' black ropes  
**50100** (2) 25' blue ropes  
**34310** (2) 50' blue ropes



**75000 Dock Mount** -  
**Large** - fits P750 & P1000  
**75001 Small** - fits P500



**26050 Down Tube** (Float not included)  
23½" shroud extension, which  
attaches to aerator unit to pull  
water up from deeper depths



**Aerator Shrouds**  
**24700** 10" x 6" - fits Surface Aerator  
F250 & Ice Eater P250



**24750** 12" x 7 3/8" -  
Aerating Fountains F500F &  
F1000F



**24800** 12" x 12" - Large Aerator  
Shroud  
fits F500, F750, F1000,  
F750DP & F1000DP



**Ice Eater Shrouds**  
**69010** Small - 10" x 12", Fits P500  
**69012** Large - 12" x 15",  
Fits P750 & P1000

# FREQUENTLY ASKED QUESTIONS

## INSTALLATION

### **1) How do I know which products best fit the needs of my lake/pond?**

Size, depth, and water conditions are only a few factors that will determine which of our products will best satisfy your ponds' needs. With extensive knowledge and years of experience, our professionals will work with you. They know the right questions to ask and will easily determine which product, size, and application you need.

### **2) How easy is your equipment to install?**

#### **Do I need to hire a professional to install my fountain/aerator/ice eater?**

Depending on the power hookup, professional installation may be needed. However, all of our products require little or no assembly and can be installed by one or two people.

### **3) Are your products heavy?**

We try to keep our equipment manageable. The weight will vary based on length of power cord, horse power, and additional accessories. But here are some rough weights for you.

- Ice Eater/Aerators weigh between 35 - 45lbs
- Ice Eaters with Mallard View Outdoors' stand: around 68lbs total.
- Our larger HP Olympus Series Fountains weigh about 85lbs (this is without lights)

Please don't hesitate to call for a closer estimate on specific pieces of equipment:

### **4) How do I anchor my floating fountain or aerator?**

We recommend using ½ cinder block tied to the rope and placed on pond/lake bottom firmly and at a 45° angle.

## OPERATION

### **5) My equipment is running intermittently? - Or - My equipment keeps tripping the GFI?**

Check the power cord for nicks, cuts, or any other damage. Sometimes even the smallest nick can cause a problem. Should you find any damage, please replace the power cord.

If that is not the case, then the seal or capacitor may have gone bad. A broken seal will allow water to get into the motor can. In either case, send your equipment in for repairs to us or another authorized service center.

### **6) My equipment is sluggish/runs slow throughout the duration of the runtime.**

#### **What is the problem?**

Check the voltage you are plugging your equipment into, it needs to be the same as your equipment.

### **7) Why does my equipment stop running or runs much slower than normal when I plug in another machine?**

Chances are your Ice Eater is sharing the same circuit as the other machine and that's what is causing the problem. You need a dedicated line for an Ice Eater and the proper voltage to match. Plugging into outlets with lower Amps could cause a problem.

### **8) My equipment won't start or is very slow to start; what is the problem?**

There are three likely problems when this occurs:

- If the motor runs at half speed, then the capacitor winding could be bad.
- If it won't start at all, check your power cord for bad connection/damage, check the GFI, or breaker - One of those things is probably causing the issue.
- If you have to spin the propeller to get the Ice Eater to start, most likely the capacitor is bad.

### **9) My equipment is running backwards; what is the problem?**

This happens from time to time - send it in for repairs because chances are the capacitor is going bad and the prop will come off.





**The Power House, Inc.**  
Energy Efficient & Environmentally Friendly

**FOUNTAINS**

**AERATORS**

**ICE EATERS**



10233 S. Dolfield Rd. Owings Mills, MD 21117  
800.243.4741 info@thepowerhouseinc.com www.thepowerhouseinc.com