

7.4" BATTERY MODULE

Surface Mount Downlight / Emergency Backup

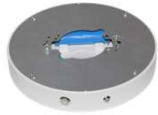
Heat Dissipating Aluminum Die-Cast / KYF-07D / KYF-07C



KYF-07D20



FINISHES



White / **WH**



Brushed Nickel / **BN**



Black / **BL**

SPECIFICATIONS

TYPE	TECHNOLOGY	SIZE	CONSTRUCTION	INSTALLATION
Surface Mount	Lithium Ion Battery	7.4" Round	Aluminum Die-Cast	J-Box
MAX LOAD	BATTERY	OPERATION	FULL CHARGE	SWITCH TIME
24W	11.1V / 2200 mAh	90 Min	8 Hrs	< 1s
BRIGHTNESS	FUNCTIONS	DIMENSION (in)		WEIGHT (lb)
40%	Test Button, Battery Condition Indicator Light	7.40 x 1.25		1.70

PROTECTION

Over-Charge, Discharge, Monthly Automatic Self-Diagnostic, Yearly Automatic Self-Diagnostic

COMPLIANCE

LISTED	COMPLIANT	LOCATION	CALIFORNIA	OPERATING TEMPERATURE	WARRANTY
ETL	FCC, RoHS	Wet	-	14° to 113°F (-10° to 45° C)	3 Year Limited

PACKAGING

UNIT	PACKAGED	CASE QUANTITY
Emergency Battery Backup Module	1 Unit per Box	12 Units per Master Case

COMPATIBLE MODELS

KYF-07D



KYF-07C



Specifications are subject to change without notice. Please visit www.candexlighting.com for most updated information.

CANDEX, INC.®

7.4" BATTERY MODULE

Surface Mount Downlight / Emergency Backup

Heat Dissipating Aluminum Die-Cast / KYF-07D / KYF-07C



KYS-07D20



DIAGRAMS ASSEMBLED



FUNCTIONS



- Manual Diagnostic Check** / Press and hold test
- Indicator Light Green** / Battery is stable
- Indicator Light Red** / Battery needs attention
- Indicator Light Blinking** / Diagnostic in process

INSTALLATION



4" Junction Box

ORDERING

MODEL	FINISH
KYS-07D20	/WH, /BN, or /BL

Specifications are subject to change without notice. Please visit www.candexlighting.com for most updated information. CANDEX, INC.®