



Jupiter Premium LE User's Manual

*Make your life healthy
and beautiful every day!*



Please read SAFETY INSTRUCTIONS carefully before using the chair.

Jupiter Premium LE

Function Introduction

1. The intelligent 3D technology will deliver a consistent soothing massage from your neck down to your hamstrings. Adopting traditional Oriental massage methods, you will come to experience a soothing kneading, pressing, tapping, and shiatsu-style massage that will invigorate the senses and relax the body.
2. With acupuncture point tracking innovation. It will deliver a massage that will massage the key areas while adjusting to different body types.
3. To enhance the massage experience the backrest is fitted with a warm soothing heating pad.
4. The Jupiter massage chair is equipped with a highly advanced L track system that reaches the neck down to the hamstrings.
5. With one simple touch of the remote, you can recline back into a comfortable zero gravity position that promotes an even distribution of weight throughout the back.
6. The forward sliding space saving technology is one of the great features that greatly eliminates the extra space required to recline. The backrest and seat frame glides forward as you recline the chair.
7. The foot massager has rounded points that lightly massage the bottom of the feet in combination with airbags that knead by applying a gentle squeeze.
8. In the calf region the airbags will deliver a pulsating action that will gently squeeze and release, refreshing the legs.
9. For the arms the same type of airbag massage is delivered. Simply slide your arms into the slots soon as you select the massage of your preference.
10. Multiple airbags are thoughtfully placed throughout the chair to provide a fully body massage experience.
11. The legrest and foot parts can be adjusted to any angle that you needed, It can extend and retract within the range up to 12.6 inches, to accommodate various heights.
12. The 7-inch touch-screen tablet is easy to operate, quick to respond, and and simultaneously displays the massage progress.

- ★ 1.Thank you for selecting the highly advanced Jupiter Premium LE massage chair by Titan.
 - 2.Please read this manual carefully before using the massage chair.
 - 3.Please keep this manual in a safe place for further reference.
 - 4.Please pay attention to SAFETY INSTRUCTIONS.
- ★ Note: We reserve the right for design modification. It is subject to change without notice. The pictures in this manual are only for reference. Please refer to the actual product.



Content

Preparation	Safety instructions -----	1
	External structure parts -----	5
	Internal structure parts -----	6
	Mechanical components diagram -----	7
	Mechanical components list -----	8
Installation	Installation -----	9
Massage Operation	Adjustment before Massage -----	13
	Tablet remote control operation -----	15
	Voice control instructions -----	23
	Icon voice content -----	25
	Operation instruction &function illustration -----	26
	After massage -----	28
Maintenance	Clean and maintenance -----	29
Others	Malfunction guide -----	30
	Technical data -----	31





Please keep this manual in a safe place for future reference.

- ★ Please read this manual carefully to make sure the installation and operation of the massage chair is correct.
- ★ “Safety Instructions” is provided in both Warning and Caution for important safety information.

Both Warning and Caution Signs are important, please pay close attention to these signs.

 Warning	This sign indicates warnings of causes of possible injuries or deaths.
 Caution	This sign indicates caution to possible injuries or damages to things. .




Symbol meaning






	This sign indicates forbidden behavior.		This sign indicates self disassembly is forbidden.
	This sign indicates must follow instruction to operate.		This sign indicates correct operation of cable.





- ★ The following should be kept for any further references.



Warning

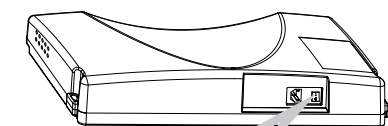
	<ul style="list-style-type: none"> ● Those with Osteoporosis. ● People with heart disease including embedded pacemaker or other medical electronic device inside the body. ● For pregnant women or people not healthy, please consult doctor before use. ● Patients with a high fever forbid to use this machine. ● Perceptual disabilities patients forbid to use this machine. ● People over 80 years old forbid to use this machine. ● Kids and the drunk people are not allowed to use the chair. ● Please don't sleep in the chair. ● Don't use the chair when your body is wet. 	People who are not suitable to use the chair
	<ul style="list-style-type: none"> ● Make sure there are no kids or pets or other objects around (under, behind or in front of) the chair at the moment of backrest, leg-rest up/down or leg-rest retraction/extension from reclining position. ● During operation, If your body feels abnormal, please stop the operation and consult your physician before use. ● Please do not take strong massage on the head. ● Do not massage belly or knees, be careful when massage neck. ● Children or pets are not allowed to play on the chair especially during massage. Standing or sitting on the back or armrest is not allowed either. ● Those who are not sensitive to the heat or allergic to the heat must be careful when using it, or do not use. 	Accident/Injury
	<ul style="list-style-type: none"> ● Insert the plug of the chair into correct and suitable power socket. Make sure the plug is completely inserted into the socket to reduce short circuit or fire risk. ● Unplug the power when not in use, stop all massage functions and turn off on/off key before unplugging. 	Fire and electric shock
	<ul style="list-style-type: none"> ● It is prohibited to use the massage chair while any items covered the massage chair ventilation holes. ● Massage cushions of the chair are not allowed to fold for storage. ● The machine is forbidden for no-load running for a long time. ● Power cord, plug, socket can't be used in broken or loose contact condition. ● Don't use other electric power except rated voltage in case of fire, electric shock or any breakdown. ● Any broken, re-process, knotted, twisted power cord or pressed under heavy cargo is not allowed to use. 	Accident Fire and electric shock
	<ul style="list-style-type: none"> ● If the chair is dysfunctional, or is broken, splashed with water or falls into water, please have it repaired by professional repairman or send the chair to assigned service agent. Self-modification, disassembly or maintenance is forbidden. ● If power cord or plug is damaged, please don't replace it yourself, please contact us or appointed dealer for replacement. ● To avoid electric shock or body injuries, please do not open or disassemble any part of the chair. ● Check leather or cloth material on the back and other areas is broken or not. If broken, even though it is small, please stop using the chair, unplug the power and have it repaired 	Disassembly and maintenance

 Caution			
	<ul style="list-style-type: none"> Please operate the chair in a flat or level place 	To avoid sudden falling.	
	<ul style="list-style-type: none"> Position the chair 10cm from the wall to allow for sufficient space to recline up and down. 	To make sure the back lying.	
	<ul style="list-style-type: none"> The maximum suggested operating time is 20mins. 5mins for each position beginning with the slight- step massage. Along continuous massage in the same position may cause uncomfortable feeling. 	Too long time massage is bad for your body.	
	<ul style="list-style-type: none"> Before sitting on the chair to avoid injury please inspect everything to confirm that the massage heads are in the correct position. 	To avoid accidental injury.	
	<ul style="list-style-type: none"> The tablet controller should be put on the holder in time, don't leave things in random places avoiding the tablet was squeezed or damaged by falling 		
	<ul style="list-style-type: none"> Please make sure that the power switch is at the "OFF" position before inserting the plug into the socket. 	To avoid the accident when turn on the power.	
	<ul style="list-style-type: none"> Turn off all controls before removing plug from outlet. 		
	<ul style="list-style-type: none"> Make sure the plug completely insert into the socket. 	To reduce short circuits and any fire hazard.	
<ul style="list-style-type: none"> Checking whether any damage on wire, make sure no water or rubbish on wire. Install earth wire the correct way. The plug must be inserted in the socket with the earth connect. The earth connection should not be bent or cut off. 	To avoid electric shock in any leakage or breakdown.		
	<ul style="list-style-type: none"> Don't press with hands or step on the massage heads with feet. Don't put hands between the working massage heads. Don't put hands or feet in the gap of mechanical parts. Don't drop or embed anything into the slot of massage chair. Don't stand or sit or put anything on the backrest, armrest or leg-rest. Don't stand on the chair during operation. Don't move the chair during operation. Don't pull out the plug or turn off the power during operation. Don't put your hands or head between leg-rest or beneath. Don't use the massage chair while wearing hair ornaments. Don't put hard things in pocket when take buttocks and huckle massage. Don't sit or press on the backrest when the chair is in reclining position. Don't use at bare skin or were thin clothes, thin clothes may can achieve better massage effect, But it also may cause irritation to the skin or cryogenic burns. 	To avoid accidents or injury	
		<ul style="list-style-type: none"> Keep the chair away from heat, wet, sharp things and corrosive, inflammable, explosive environment. To use electric blanket or other heating products on the chair is forbidden. Don't put in the space of dust serious or corrosive gas environment, Don't put the chair in a small space places or use in the bad air circulation places. 	To avoid fade, discolor on upholstery or hardened, deteriorated on PU.
		<ul style="list-style-type: none"> Keep the chair away from stove or other heating products. Don't put the chair directly under the sun or other high temperature places. 	
		<ul style="list-style-type: none"> Don't use the chair outdoor. 	

 Caution		
	<ul style="list-style-type: none"> Do not use or store the chair in any wet environment such as by the swimming pool, bathroom, and kitchen. Keep the chair and remote control dry all the time. 	To avoid leakage or electric shock.
	<ul style="list-style-type: none"> Make sure to install the earth wire in correct way (Incorrect install way may cause electric shock. If you don't know how to install, please find a professional electrician) Don't use plug adapter (If the enclosed plug doesn't match with socket, please don't change the plug by yourself and find a professional electrician to install a matched socket.) 	To avoid electric shock.
	<ul style="list-style-type: none"> Unplug the power before cleaning the chair. Unplug the power after using the chair. 	To avoid electric shock or fire harzard.
	<ul style="list-style-type: none"> Unplug the power when any damage on the power. Hold the plug to unplug the power but not try to pull the wire to unplug the power. 	
	<ul style="list-style-type: none"> Please turn off the power switch and unplug the power after massage. 	To avoid accidents
	<ul style="list-style-type: none"> Unplug the power immediately when electricity goes off. 	To avoid damage or accidents when power on again.

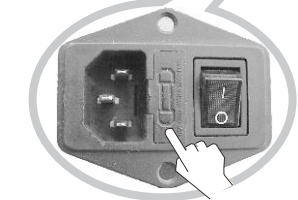
Grounding instruction


✧ ※The chair is equipped with a cord having an grounding conductor. The plug must be plugged into an appropriate socket that is properly installed and matched with the plug.



Replace fuse

✧ ※When the fuse is burned out, please turn off the switch and unplug the power. Open the lid covering the fuse which is located in the switch box. Use a fuse of the same size to replace the old one, then cover the lid properly. We recommend that you use an electrician to replace the fuse just in case.



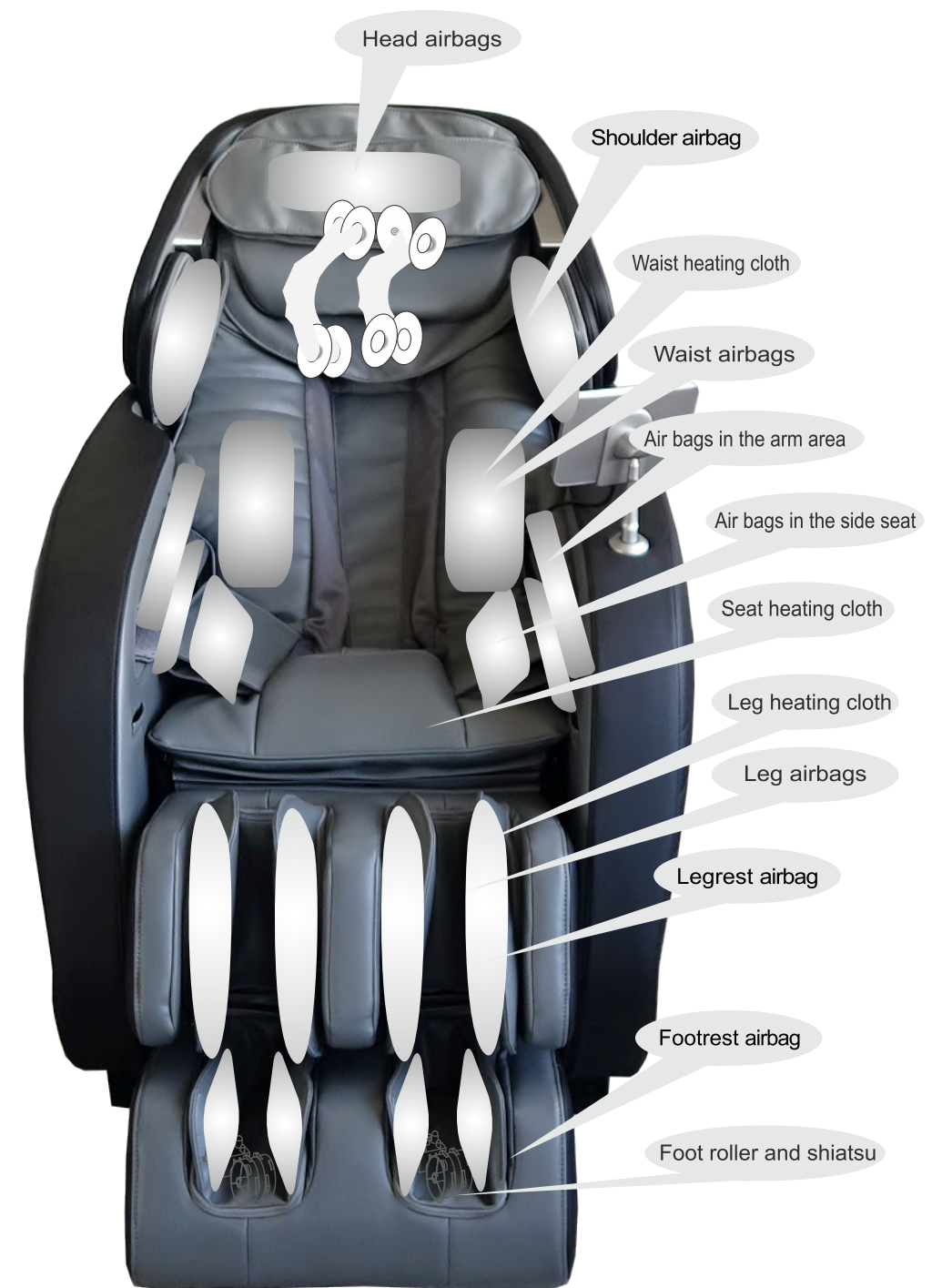
 <p>Earth wire is not allowed to be in these places</p>	<p>Gas pipe: May cause explosion or fire. Phone wire and lightning rod: May cause electric shock and fire when thundering. Water pipe: earth wire is useless where there are plastics</p>
---	---

External structure



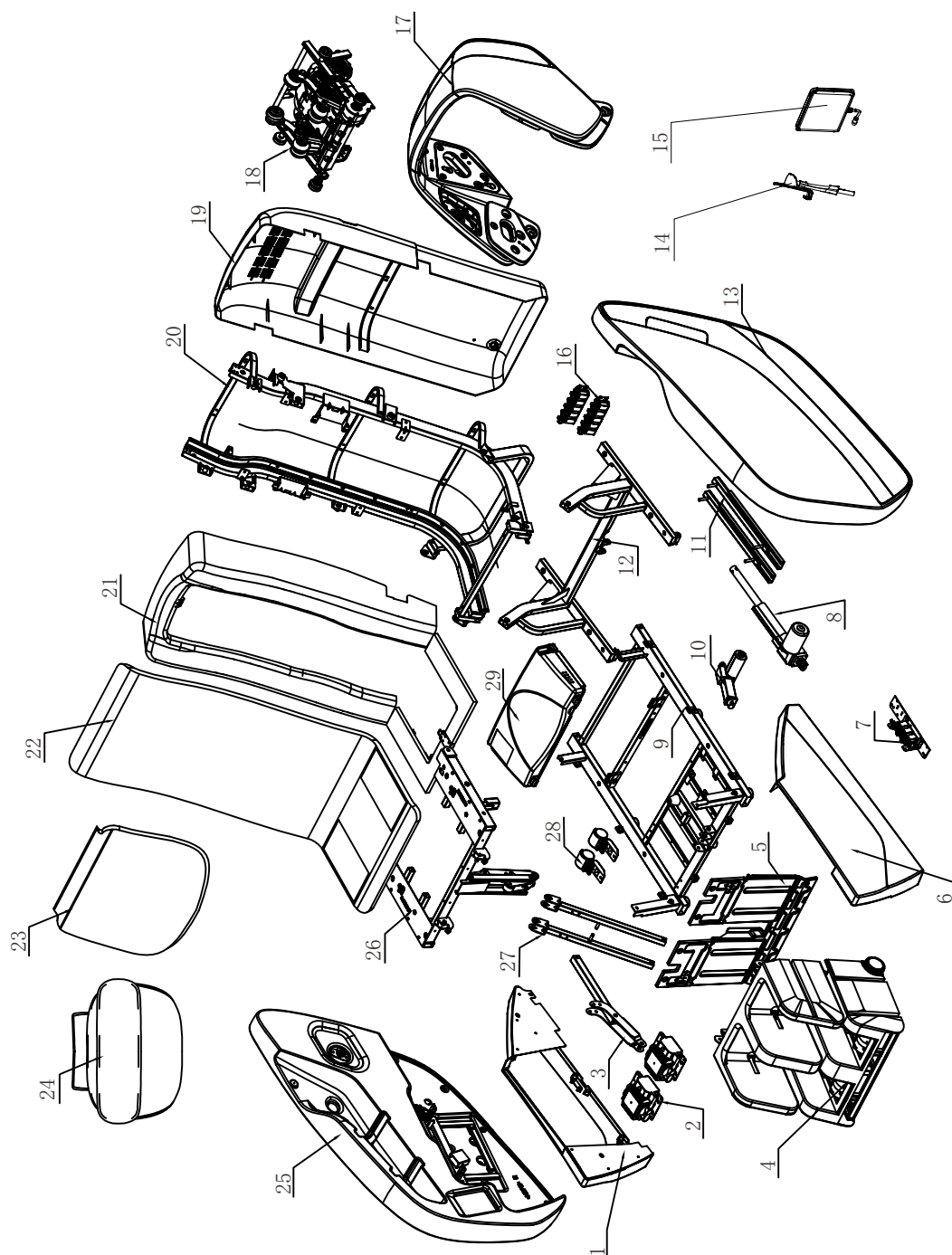
Preparation

Internal structure



Preparation

Explosion Diagram



Preparation

Mechanical components list

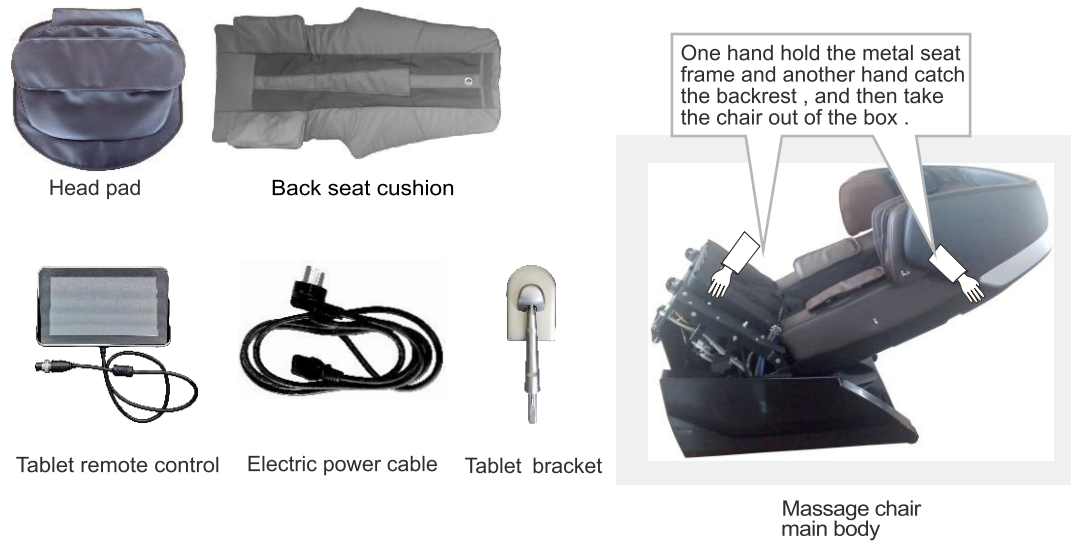
NO.	Name	Q' ty	NO.	Name	Q' ty
1	Right side fender	1	22	Back and seat cushion	1
2	Air pump assembly	2	23	Shoulder pads	1
3	connecting rod	1	24	Pillow	1
4	Legrest & footrest	1	25	Right armrest assembly	1
5	Front fender	1	26	Seat frame surface assembly	1
6	Left side fender	1	27	Seat support bar	1
7	Electric magnetic valve	1	28	Castor	2
8	Backrest electric actuator	1	29	Power case assembly	1
9	Bottom seat frame assembly	1			
10	Footrest electric actuator	1			
11	Sliding rail	2			
12	Top seat frame assembly	1			
13	Left amrest assembly	1			
14	Tablet bracket	1			
15	Tablet remote control	1			
16	Electric magnetic valve	2			
17	Shoulder massage device	1			
18	Massage machine	1			
19	Back cover assembly	1			
20	Back frame assembly	1			
21	Backrest plastic front cover and seat plate assembly	1			

Preparation

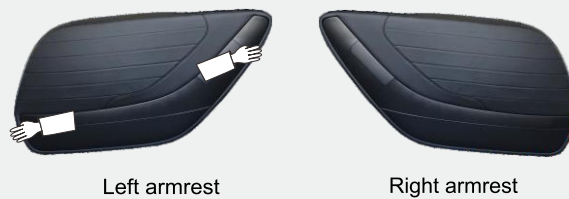
Installation (1)

Step 1. How to move the chair

- ① Take out the back seat cushion box from the main carton box at first, and then two more people grasp left and right metal frame, take the chair body from the main carton box.
- ② Take pillow, back cushion, power line, controller, etc. from the back & seat cushion box. (as the picture shows)



- ③ Slowly remove the left and right armrest from the armrest carton box. Lay the armrest on a completely flat surface (please be careful and pay close attention to prevent scratches). Gently position your hands in front and back of the armrest when installing the armrest.



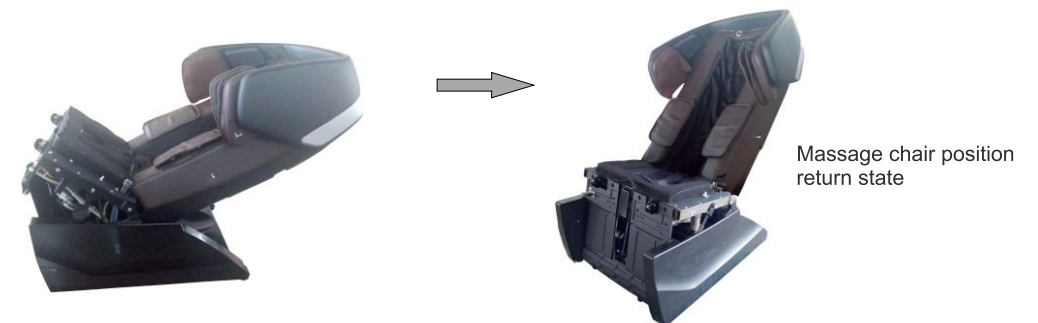
- ④ Slowly remove the leg-rest from the leg-rest carton box. Gently position your hands in the front and backside of the leg-rest at all times (please be careful and pay close attention to prevent scratches).



Installation (2)

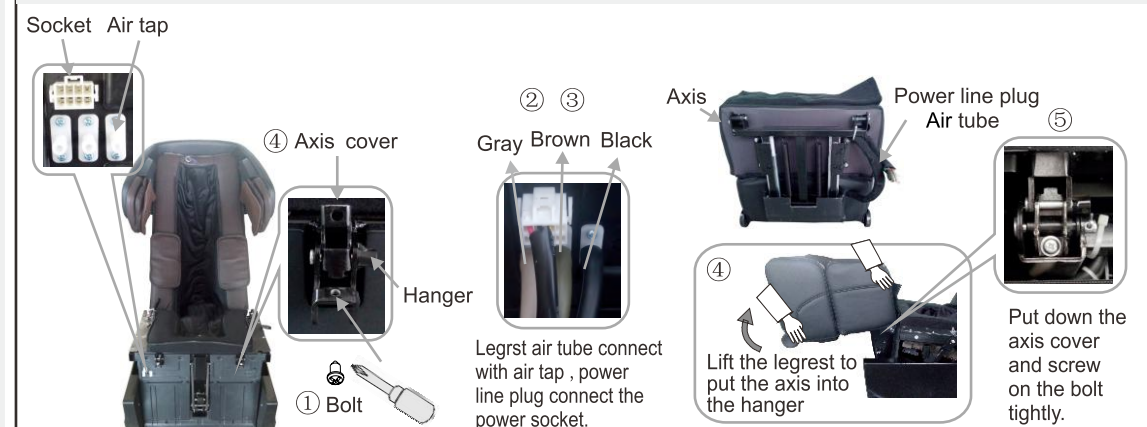
Step 2. Massage Chair Return Position

After removing the massage chair body from the box, 1) Take out the power cord, insert one end of the power cord to the socket on the power box, insert the other end to the power socket most likely located on the wall. 2) Turn on the power switch next to the power box of the massage chair, the massage chair will turn to a "Power on" status, the backrest will rise up, while the seat slightly goes down. 3) After the backrest returns, turn off the switch, unplug the power plug. (Refer to step 7 after assembly).



Step 3. How to Assembly (Leg Rest)

Install the leg-rest to the main body of the chair. 1) Unscrew the bolt from the hanger of the leg-rest. 2) Please insert three air tubes of the legs into the air taps of the main body, according to the color of the plug. From left to right, in turn, gray tube, brown tube, and black tube. 3) Connect the power line plug to the socket tightly. 4) Lift up the leg-rest, place the axis into the hanger of the main body, then place over/ put down the axis cover. 5) Screw the bolt tightly.



Installation (3)

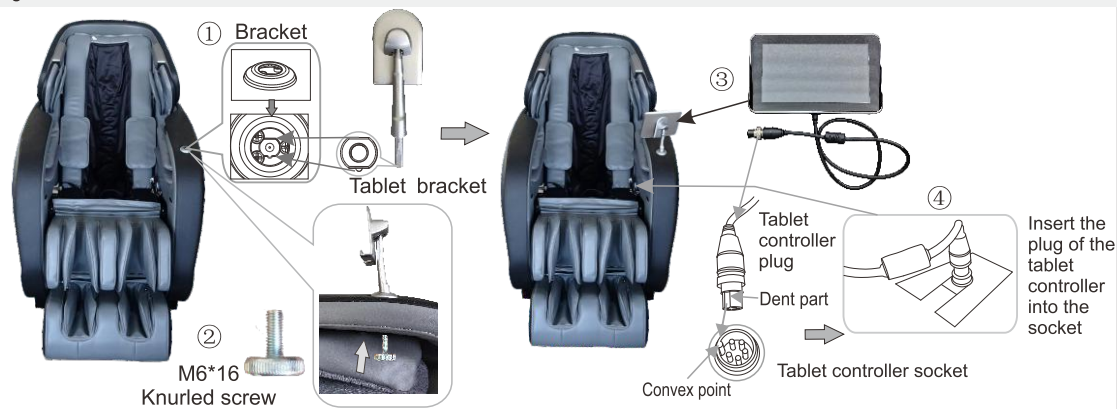
Step 4. How to assemble the left and right armrest

① Use a Phillips screwdriver to remove the M6 screws on the iron frame of the seat surface and the upper end of the armrest;
 ② Insert the fixing hole on the inner rear end of the armrest, The fixed shaft on the side of the backrest; ③ Insert the square tube of the armrest into the side panel of the seat frame; ④ Properly move the armrests so that the front and back of the armrests are fixed. The fixed plate is aligned with the screw holes on the iron frame of the seat surface, and fixed firmly with M6 screws. ⑤ Open the zipper at the edge of the shoulder device airbag, lift the airbag by hand, align the screw hole under the airbag with the screw hole on the armrest, insert the previously unscrewed screw into the screw hole, and tighten it with a Phillips screwdriver and zip up. ⑥ Then connect the air pipe on the armrest to the air nozzle of the seat firmly. During the installation process, do not squeeze the air tube. After installation, check that the air tube should not be broken. Tighten the screwdriver, and finally close the zipper. During the installation process, do not squeeze the air tube. After installation, check that the air tube should not be broken.
 Dismantle the armrest: Before disassembling the armrest, first unzip the zipper on the shoulder airbag and unscrew the screws; unplug the air pipe connecting the seat and the armrest one by one; then remove the four screws on the seat surface; then move the front end of the armrest upward. Lift up to move the armrest square tube out of the seat frame plate; Finally, pull the armrest forward forcefully to move the fixing hole out of the fixed shaft on the side of the backrest, and the armrest can be removed.



Step 5 Install the tablet controller and bracket

① Insert the plate bracket rod into the bracket seat of the left armrest, and insert the bracket according to the shape of the bracket and the shape of the seat hole when connecting; ② After inserting the plate bracket rod, use M6*16 knurled screws to tighten from the upper end of the arm airbag hole on the inner side of the armrest. ③ Put the tablet controller on the bracket; ④ Align the recess of the plug with the convex point of the socket on the left side of the seat of the chair, connect the plug and the socket together, and then tighten the nut.



Installation (4)

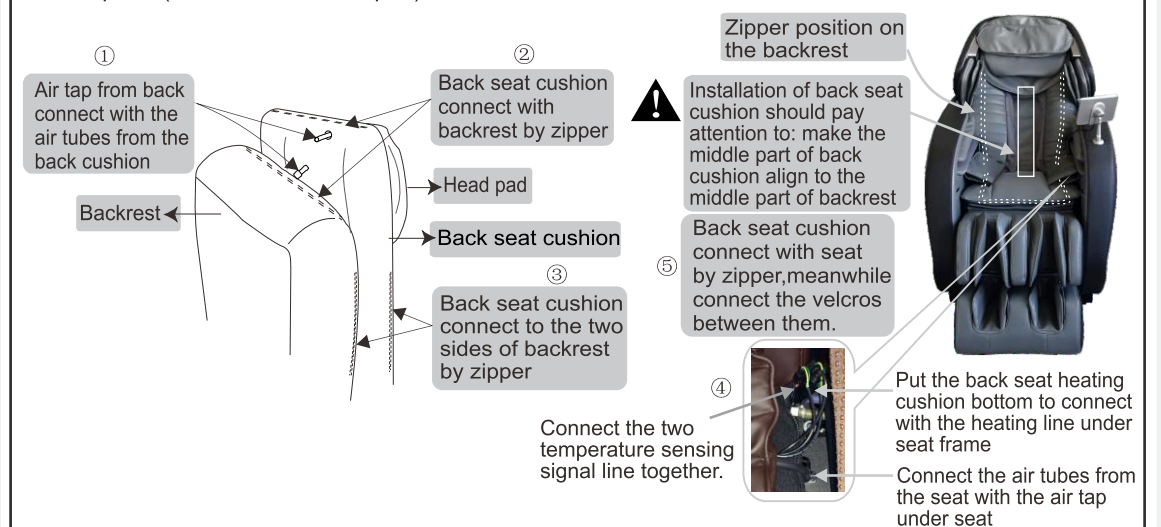
Step 6. Connect Zipper or Velcro

Put the back seat cushion head pad onto the backrest and connect the two parts with a zipper and velcro.



★ Tips

In order for precision, when you sit on the chair, please align the bottom rim of the head pad with your ears before zipping the said two parts (backrest and head pad).

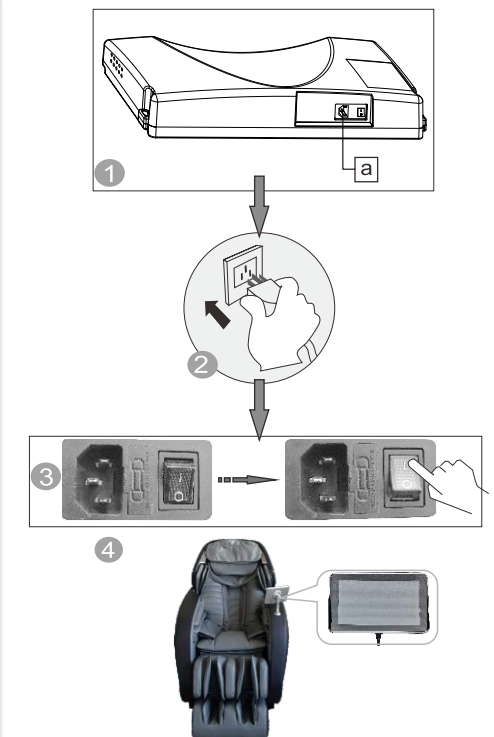


Step 7. After the Assembly

After the assembly, please operate the chair in this order:


- 1 Plug the cable line in the hole a on the power box as shown in the right picture.
 - Hole A (A must be capitalized)
- 2 Insert the plug of cable line into the socket.
- 3 Switch on. (Switch on/off "O/I", press I down to turn it on.)
- 4 Enjoy the massage by using the remote control.


⚠ Make sure the switch is off before you insert the plug of cable line into the socket.




Environment

 Caution

 Do not use the chair in wet places like near the swimming pool and/or bathroom to avoid leakage or electrical shock.

 Do not use under sunlight or near stoves, or any other heat sources to avoid upholstery deterioration.

 Please use the chair on a flat surface to avoid chair falling, minimize noise, or cause other unexpected trouble.

● Check Before Use

Check all areas such as when the back is declining and the leg-rest is extending. Make sure no people, pets, or objects are around.



● Check Power Cable Plug

- 1) Be sure to use a dry cloth and clean the dust as frequently as needed.
- 2) Do not damage, re-do, bend, stretch, tie, or apply heavy pressure (especially can't be pressed by the chair) on the power cable.



Check environment

● Space size for using the chair

- At least 10cm from wall.



- At least 60cm in front of the leg.

● Check surroundings

When the backrest or legrest reclines or extends, please pay attention to:

- (1) Check any person or things in every direction.
- (2) Check the space size.



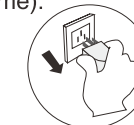
How to move massage chair

 Caution

✦ Don't move chair when it's working in case of accidents or damage

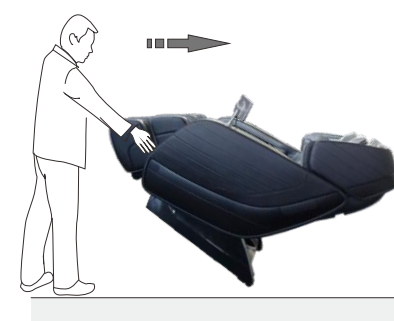
How to move


- ✦ Bind the cables and put them in the seat to avoid damage when moving.
- ✦ If you plump the chair, it may damage the inner parts of the chair .
- ✦ Don't use the castor if the floor is wooden or other easy damaged material. It will need 2 or more persons to lift the chair.
- ✦ Make sure the power is off and the plug is not touching the floor (Your chair must be in the upright position during this time).



Normally

- 1 Lift up the legrest to make the gravity fall on the castor. Then push chair to destination and set it down.



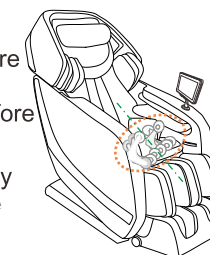
 Please hold the footrest to move the chair as shown in the picture, to prevent any scratches on the leather.

Adjustment before massage

● Before adjustment

✦ Please make sure you are aware of the massage head in the seat part before sitting on the chair.

✦ To avoid injury caused by the wrong position of the massage heads.



✦ Acupuncture point tracking detecting

When doing acupuncture point position detecting, if massage head can't detect the effective shoulder height position, the actual shoulder height position was default to the middle part of back.

Right position: Your back cling to the chair back, the head clings to the pillow.



The remote control gives "beep" sound after acupuncture point tracking detecting finished, when micro-adjustment is needed, just press up/down key on the remote control.

✦ Avoid for the massage head detecting your acupuncture point position not right, otherwise you won't get good massage.

● Kind suggestion



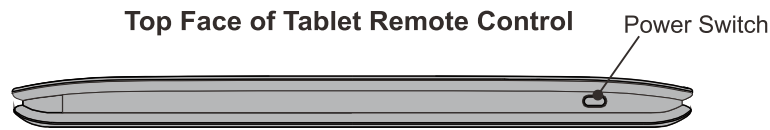
- When you feel the intensity isn't strong enough, take off the pillow or cushion.

● Because the chair is heavy, it may ruin your floor in long time setting. Please put a blanket or other soft things to protect your floor.

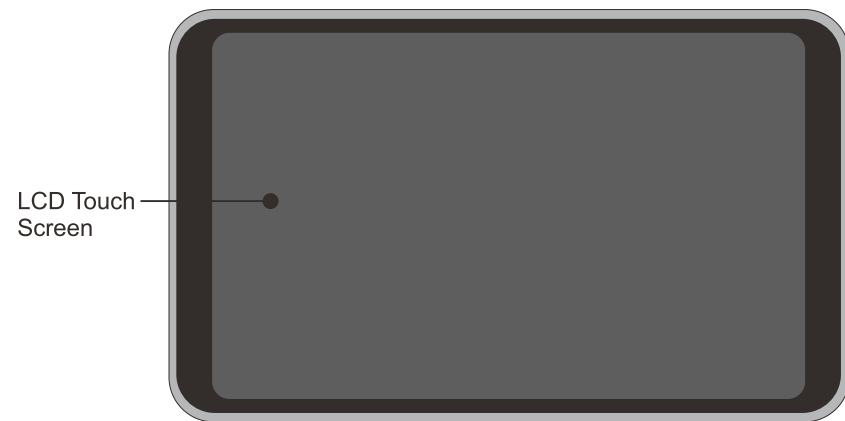


Tablet Remote Control Operation

Top Face of Tablet Remote Control



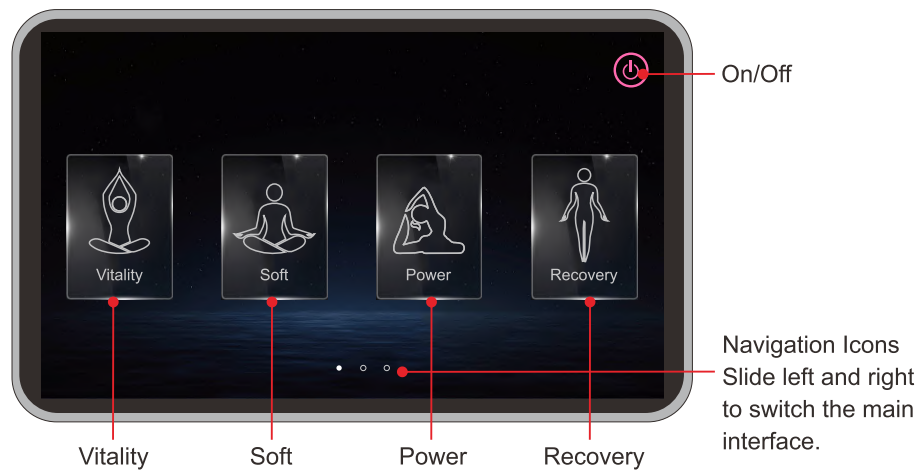
Tablet Remote Control



LCD Touch Screen

After the chair is powered on, the tablet is turned on by default and the boot interface is displayed. Wait for a while to enter the main interface. Press the power switch on the top right of the tablet controller to turn on/off the tablet controller.

Main Interface I



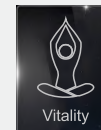
On/Off

Navigation Icons
Slide left and right to switch the main interface.

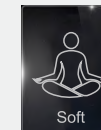
Vitality Soft Power Recovery

Massage operation

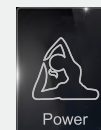
Tablet Remote Control Operation



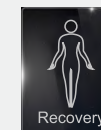
In the power-on state, click this button to brighten the icon and enter the "Vitality Massage" automatic program. The default working time is 8 minutes.



In the power-on state, click this button and the icon will light up and enter the "soft massage" automatic program. The default working time is 20 minutes.



on the power-on state, click this button and the icon will light up and enter into the "power massage" automatic program. The default working time is 20 minutes.



In the power-on state, click this button and the icon will light up and enter the "recovery" automatic program. The default working time is 20 minutes.

Main Interface I

Vitality, Soft, Power, Recovery interface



"Power on" button, click it to change to selected state, then you can use the function of massage chair.



"Pause" button, after clicking it, becomes "Continue button" and the massage chair pauses massage, after clicking it becomes "Continue button", the massage chair resumes the massage function. Note: After the pause, only the resume key and the shutdown key are valid.



"Return" Press this button, return to the home page.



"Knock" message method status display.



"Knead" message method display.



"Tap" message method status display.



"Shiatsu" message method display.



The heating default status is on, press to stop heating.



Message time left and adjust button, shows the time left for the current massage function, Up and down arrow key can add or reduce the time.



Roller speed adjustment, has fast and slow two levels.



Air pressure adjustment button, a total of 5 gears, click "+" or "-" to adjust the intensity of the air pressure.



Position adjustment button, click and enter the position adjustment interface.



Body massage position, (screen can show the air massage, roller massage, heating status)

Massage operation

Tablet Remote Control Operation

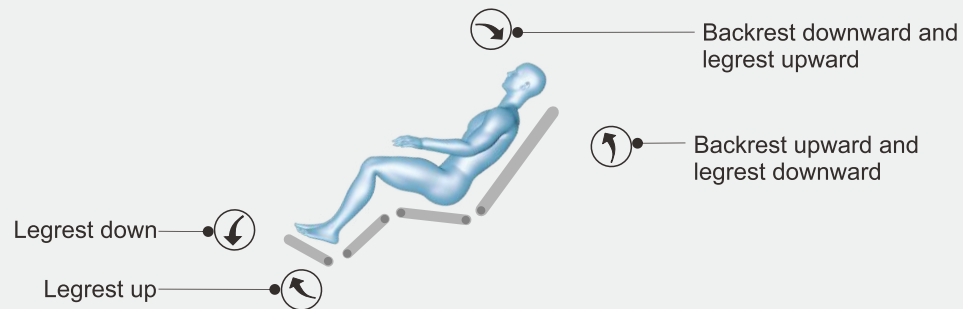
Position Adjustment Interface



Zero gravity icon, click it to light to enter into the zero gravity function, the back will lie down, and the legrest will rise up.



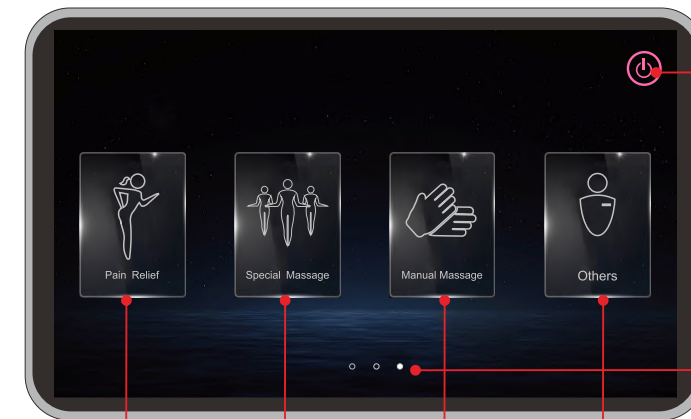
"Reset" button, click to light it up and the chair's backrest will rise up and the footrest will fall down.



Massage operation

Tablet Remote Control Operation

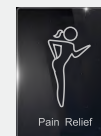
Main interface II



Pain Relief Special Massage Manual Massage Others

On/Off

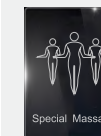
Navigation icon, slide left and right to switch interface.



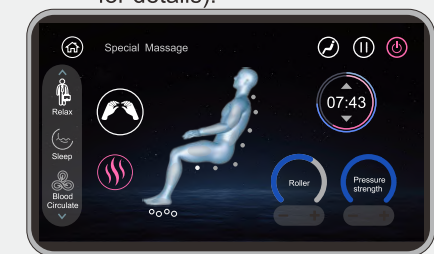
In the power-on state, press this icon enter pain relief mode, default working time for this auto program is 20 minutes.



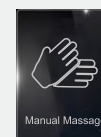
Pain Relief Interface



In the ON status, press this key to enter Special Massage, 5 special auto programs for your option. (See Special interface introduction for details).



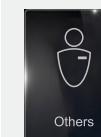
Special Massage Interface



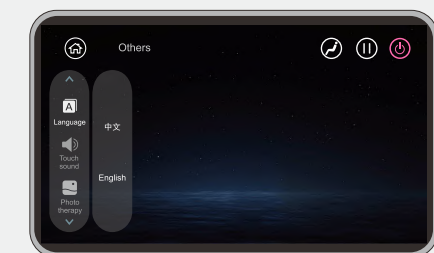
In the ON status, press this key to enter Manual program interface. (See Manual interface introduction for details).



Manual Massage Interface



In the power-on state, click this button and the icon will light up and enter the "Settings" status interface.



Others Interface

Massage operation

Tablet Remote Control Operation

Main interface II
Special Massage



Special Massage Display Area

Waist massage
In the power-on state, press this icon and the icon will light up and enter Waist Massage mode, default working time for this auto program is 20 minutes.

Relax
In the power-on state, press this icon and the icon will light up and enter Relax mode, default working time for this auto program is 20 minutes.

Sleep
In the power-on state, press this icon and the icon will light up and enter Sleep mode, default working time for this auto program is 20 minutes.

Blood Circulate
In the power-on state, press this icon and the icon will light up and enter Blood Circulate mode, default working time for this auto program is 20 minutes.

Stretch
In the power-on state, press this icon and the icon will light up and enter Stretch mode, default working time for this auto program is 20 minutes.

Mode
In the Power-on state, after clicking this button, the icon lights up, one Mode menu will pop up and display Knocking, tapping, kneading, Shiatsu, knead&tap, Kneading&kneading six kinds of massage technique.

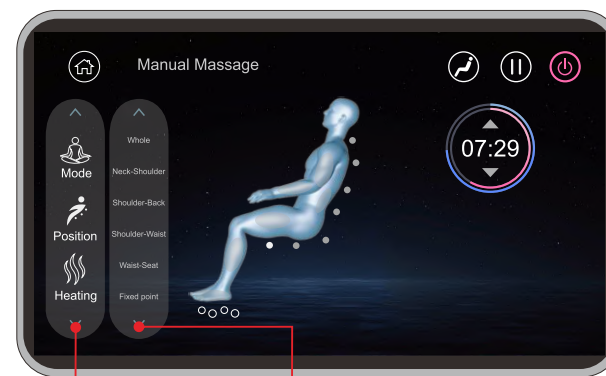


Manual Massage Mode Display Area
Display Area

Massage operation

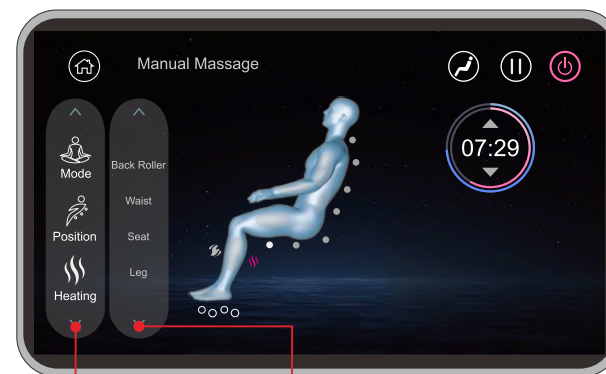
Tablet Remote Control Operation

Main interface II
Manual Massage Interface



Manual Massage Mode Display Area
Display Area

Position
In the power-on state, click this button and the icon will light up and one menu will pop up, and display Whole, Neck-Shoulder, Shoulder-Back, Shoulder-Waist, Waist-Seat, Fixed point. Click Fixed Point and show Up-button and down-button, which can adjust the position.



Manual Massage Mode Display Area
Display Area

Heating
In the power-on state, click this button and the icon will light up and enter heating menu and display Back Roller, Waist, Seat, Leg, click them to turn on or off heating.



Manual Massage Mode Display Area
Display Area

Pressure
In the power-on state, click this button and the icon lights up and one menu will pop up, and display Full body, Shoulder-Arm, Waist-Back, Leg&Foot, Head, Shoulder-Foot, Arm-Seat, Waist-Foot, Upper Body, lower body. Click the button, the icon will light-up, and the pressure massage begins to work.

Massage operation

Tablet Remote Control Operation

Main interface II Manual Massage Interface



Speed 3D Width
Manual Massage Display Area
Adjustment Display Area
Roller Speed Adjustment
3D Adjustment Air Pressure Adjustment

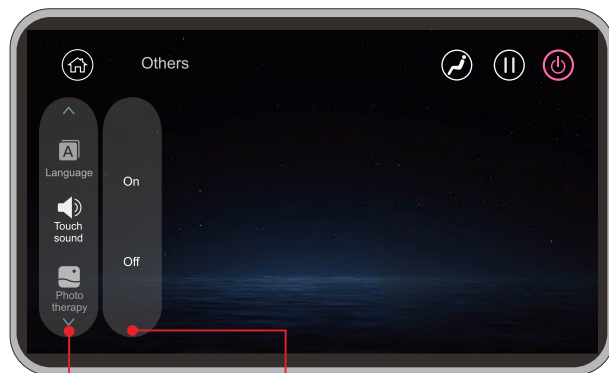
Adjust
In the power on state , click this button and the icon lights up, and the adjustment button pops up, you can adjust the speed, 3D width, time , 3D strength, air pressure adjustment, roller speed. Click the "+" and "-" for adjusting the gear.

Main Interface II Set up interface



Set-up Display area Mode Display Area

Language
In the power-on state, press this icon and the icon will light up and language button pops up , showing English and Chinese.



Set-up Display area Mode Display Area

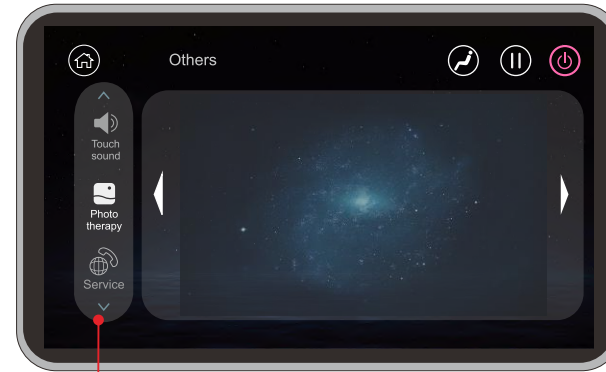
Touch sound
In the power on state , click this button and the icon lights up. Show "On" "off "menu, click the icon to turn on or off Touch sound.

Massage operation

Massage operation

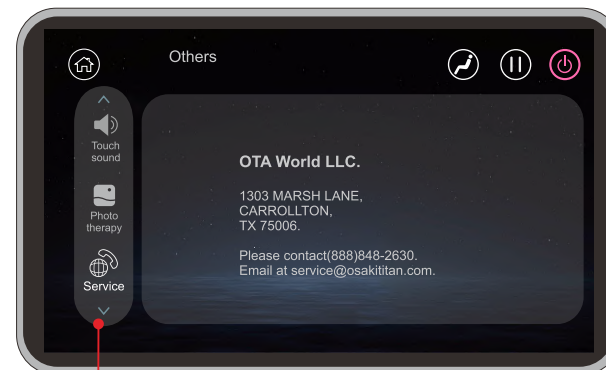
Tablet Remote Control Operation

Main Interface II Set up interface



Set-up Display area

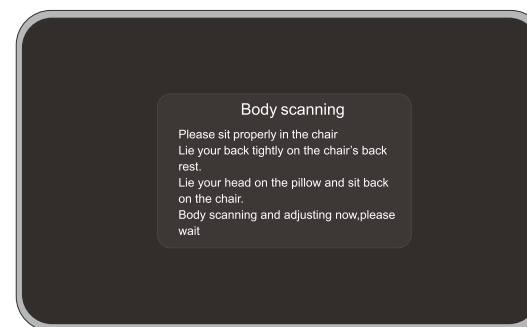
Photo therapy
In the power on state , click this button and the icon lights up. The background selection menu pops up. Swipe left and right to select the background. It will take effect after selection.



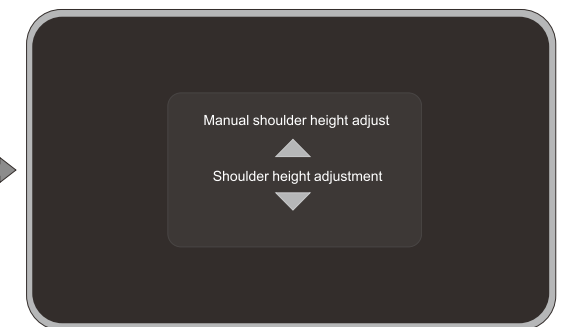
Set-up Display area

Service
In the ON status, click this icon to light up, show the company introduction, and service hotline, website etc.

Body scanning interface



Body scanning finished, enter into manual shoulder height position adjustment interface.



Voice control instructions

In the standby state, press the power switch of the tablet hand controller to enter the power-on state, and the voice recognition system enters the waiting state.



- When using the voice recognition function, you need to say the wake-up word "Hello, KIRI" before the system can recognize the subsequent voice commands. After the voice mode is turned on, if no voice command entry is spoken within 8 seconds, the system will automatically turn off the voice mode. After the massage chair recognizes the command, there will be corresponding speaker voice feedback, indicating that the command is successfully recognized. Please speak the following voice commands in English clearly and loudly. If it can not recognize your comment, please pause for 2 seconds and raise your volume to speak again.

- The entry of Voice command :

The entry of Voice command	The feedback of Voice command
Hello,KIRI	Hi,I am here/Hi,what can I do for you?
Stop massage	Thank you,see you next time
Volume up	Volume up
	Already reached the limit
volume down	Volume down
	Already reached the limit
Power mode	Ok,Power mode on
Change a new mode	The technique is running for you
Recovery mode	Ok, Recovery mode on
Pain relief mode	Ok, Pain relief mode on
Stretch mode	Ok, Stretch mode on
Vitality mode	Ok, Vitality mode on
Burmese massage	Ok, Burmese massage on
Waist massage	Ok, Waist massage on
Blood circulate mode	Ok, Blood circulate mode on
Senior mode	Ok, Senior mode on
Sleepy mode	Ok, Sleepy mode on
A new technique	The Technique is running for you
Air pressure massage	Ok, Full body air massage on
Backrest Up	Ok, Backrest up

Voice control instructions

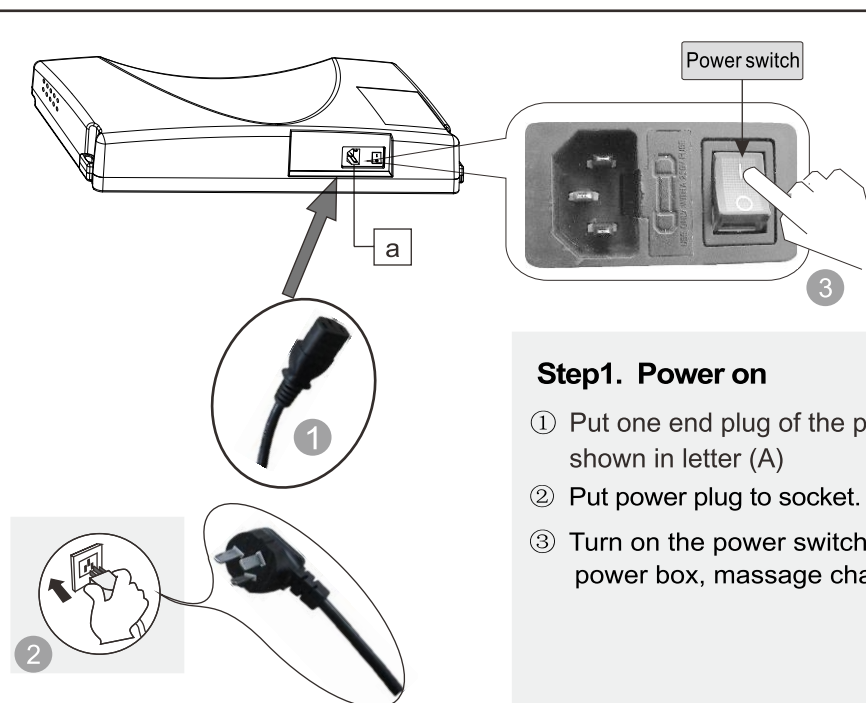
The entry of Voice command	The feedback of Voice command
Backrest Down	Ok, Backrest down
Legrest Up	Ok, Legrest up
Legrest Down	Ok, Legrest down
Speed up	Ok, Speed up
	Already reached the limit
Slow down	Ok, Slow down
	Already reached the limit
3D Plus	Ok, Already adjusted for you
	Already reached the limit
3D Minus	Ok, Already adjusted for you
	Already reached the limit
Strong air	Ok, Strong air
	Already reached the limit
Weak air	Ok, Weak air
	Already reached the limit
Zero gravity	Ok, Zero gravity on
Position reset	Ok, Position reset
Foot rollers	Ok, Foot rollers on
Switch off foot rollers	Ok, Foot rollers off
Switch off voice function	Ok, Voice function off
Make it wider	Ok, Now is wider
	Already reached the limit
Make it narrower	Ok, Now is narrower
	Already reached the limit
Heat function	Ok, Heat function on
Switch off heat function	Ok, Heat function off
Pause massage	Ok, Massage pause
Continue massage	Ok, Massage continue
Function unavailable	

Icon voice content

● Icon voice content

Hello, I am happy at your service
Dear, see you next time.
Emergency stop
Dear, see you next time.
Turn off
The mode is running for you
The technique is running for you
already adjusted
Width adjusted
Speed adjusted
Rollers up
Rollers down
Air intensity adjusted
legrest up
legrest down
backrest down
backrest Up
zero gravity on
position reset
already adjusted
massage pause
all heat on
all heat off
massage continue

On/Off

**Step1. Power on**

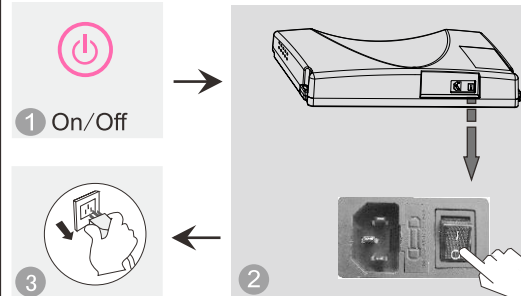
- ① Put one end plug of the power line as shown in letter (A)
- ② Put power plug to socket.
- ③ Turn on the power switch which is on the power box, massage chair is powered.

Step2. Massage

- ① Operate according to controller operation instruction.
- ② When the massage chair finishes massage, it will return to the default position, The tablet controller switches to the main interface. If no other operation, the tablet controller will automatically turn off after 30 seconds.



Tablet remote control

**Step3. Turn off the power**

- ① When the chair is On, press On/Off button to turn off the massage chair and it will restore automatically.
- ② Turn off the power switch on the bottom of the back of chair after the rollers stay at storage position.
- ③ Unplug the power plug from the socket.

**Warning**

1. Before using, pull up the pillow, back cushion etc. to check if the PU material is broken, if there is damage, please stop using, unplug the chair, and ask for repairment.
2. Only plug to proper socket.

**Attention**

1. Before sitting down, make sure there is no things pinched between armrest, legrest, backrest and seat of the chair.
2. Make sure the chair is in returned position before using.
3. Do not stand on it when using the massage chair.

Function Illustration

● Legrest up and backrest down

Press this button on controller, backrest go down and legrest go up. Release this button, backrest and legrest stop moving, the angle is locked in this position.



● Legrest extend and retract

Legrest can extend or retract within a range of 32CM.



● Backrest up and Legrest down

Press this button on controller, backrest go up and legrest go down. Release this button, backrest and legrest stop moving, the angle is locked in this position.



● Arm massage

Put arms between arm airbags before the embedded airbags filled with air. It will perform pinch massage techniques to arms and hands after airbags inflating.



● Legrest Down

Press this button on controller, legrest goes down. Release the button, legrest stops moving, the angle is locked in this position.



● Shoulder massage

Multilayer extrusion airbags is deployed on both sides of the shoulder. Achieve pressure shoulder stretch massage, relieve shoulder fatigue.



● Legrest Up

Press this button on controller, legrest goes up. Release the button, legrest stops moving, the angle is locked in this position.



● Zero gravity

Press the button "Zero", backrest go down and legrest raise up, the chair go into Zero gravity status automatically. Press the Button again, the backrest and legrest stop moving, and it will lock at this position. However to change the angles, we can keep comfortable massage status all the time.



● Foot roller massage

Footrest parts with roller massage and air pressure massage function. Through stimulating the foot reflex zones, and clear the body meridians, regulate and restore human organs function, improve the body resistance and immunity effectively.



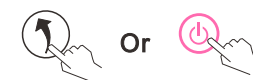
- ! 1. Please make sure there is no people, no pets or any stuff within range for backrest to avoid unexpected hurt or property loss.
2. When adjusting the backrest, be careful the gap between the backrest and armrest.
3. When the legrest is moving, please do not stand on or leave from the seat, do not stop the legrest from moving in case of causing damage to the chair.
4. Please refer to control instruction for more details.

Restoration of massage chair

- 1 Make sure there is no people or pet or anything within the range of backrest and legrest.



- 2 Make backrest and legrest restore to the normal position by controller. (or press ON/Off key to make backrest and legrest restore to the normal position)

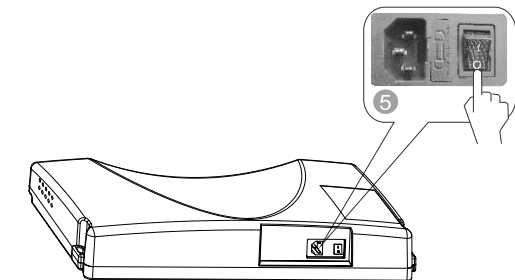


- 3 After the chair restores, put the tablet into the holder.

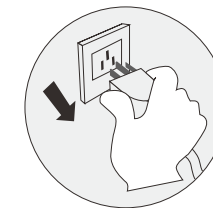


- 4 Put the pillow pad on to the right position.

- 5 Switch off the power.



- 6 Unplug the electricity from the socket. (Attention: hold the right plug position)



- 7 Clean the chair if necessary.



Attention!

- After using, press ON/OFF to end all the massage method and wait for restoration.
- Make sure to cut the electricity to avoid any unexpected hurt to children or pets.
- After using, turn off the power, unplug the electricity. Avoid moisture, dirt and aging of insulation in case of causing damage.

Synthetic leather

General cleaning

Clean with tidy, soft and dry cloth slightly.



(Chemical or medical cleaning products are forbidden)



If leather is dirty

- 1 Dip soft cloth into 3-5% neutral detergent solution, squeeze it then clean the stain on the surface gently.
- 2 Wash cloth, squeeze it and wipe with detergent.



- 3 Clean it softly with dry cloth.
- 4 Allow to dry (air blower is prohibited)

Plastic parts

- 1 Dip cloth into neutral detergent, squeeze it and clean.
- 2 Wipe with water-dipped but squeezed cloth.
- 3 Allow to dry.



Clean the controller

- 1 Wipe with soft cloth after squeezing.
- 2 Allow to dry.
Propellant, diluent or alcohol are prohibited.



Cloth material

- 1 Dip cloth into weak neutral detergent, squeeze it and clean the material surface.

- (Diluent, gas, alcohol are prohibited)
Brush the dirty parts with weak neutral detergent. (avoid excessive brushing)

- 2 Excessive cleaning may cause damage to cloth material.
- 3 Wipe with water-dipped but squeezed cloth.
- 4 Allow to dry.



About cleaning

- Before cleaning, unplug the electricity, don't touch plug with wet hands.
- Make sure hands are dry when plugging to the socket.
- If failed to follow the mentioned instruction, user may get electric shock or burned.

Maintenance

Others

FAQ and Troubleshooting

Trouble	Possible reason	Troubleshooting
The massage chair can't work after power is on.	Check if the control is on or not.	Open control switch
	Not choose massage function	Choose massage function
	Check whether the plug and socket in poor contact.	Make sure plug and socket are connected.
	Wire or plug has damaged.	Please ask manufacturer or appointed or authorized maintenance man for checking and replacement.
	The fuse burned out.	Replace fuse of same specification.
There is beep sound inside the massager while working.	It is sound of air pump, motor and mechanical parts.	Normal sound, no need to pay attention to it.
		Different height of the left roller and right roller.
Sound suddenly becomes much louder while working.	Check if it is due to long time working.	Turn off the power to have the massager rest for over half an hour before next turn working.
	Inner parts fretted away due to long time work. It's normal	Please ask appointed or authorized maintenance man for checking and repairing.
Massage function suddenly stops while working.	Suddenly power-down	Connect the electricity power again
	Setting time is up.	Restart
Neither the backrest nor the legrest can be lay down.	Check if there are any obstacles; the chair overloads; for the sake of safety, sometimes the massage machine may automatically stop working.	Remove the obstacles; turn off the power to have the massager rest for over half an hour before next turn working.
The chair can't return to its original position.	Excessive operation; setting time is up.	Please ask manufacturer or appointed or authorized maintenance man for checking and replacement.
Electric wire or plug give out heat	It may work overload	Turn off the power to have the massager rest for over half an hour before next round working.
	Other abnormal case	Stop using, and ask appointed maintenance man for help.



Note: If the troubles are not caused by above reasons, please turn off the power switch and cut off the power, then contact the manufacturer or service agent to repair your chair.

Technical data

Name	TITAN massage chair	Power	200 W
Model	Jupiter Premium LE	NW/GW	Mainbody: 171.60/224.40 lbs Armrest: 34.1/48.40 lbs Legrest & footrest: 33/38.5 lbs
Input voltage	120V~ 60Hz		Packing size
Safety design	Class I		