

Using TANDEM plus BLUMOTION

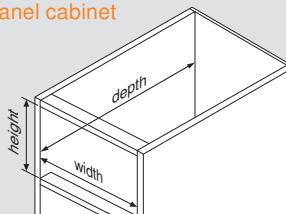


Step 1

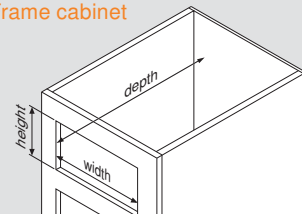
Measure cabinet opening

Cabinet opening measurements are needed to determine drawer box size.

Panel cabinet



Frame cabinet



Step 2

Select TANDEM runners

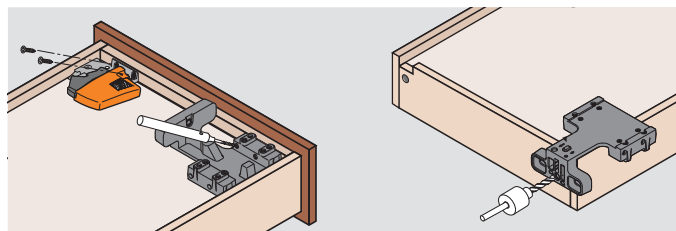
Based on the application, choose the TANDEM runner that fits the desired extension, drawer side thickness, load capacity and cabinet depth. Then go to the corresponding catalog page for more specific information.

drawer length	full extension		heavy duty full extension	
	maximum drawer thickness	3/4"	maximum drawer thickness	3/4"
9"	5/8"		5/8"	3/4"
12"	563H series	563F series		
15"				
18"	563H and 563 series		569H series	569F series
21"				
24"			569 series	569A series
27"				
30"				
capacity static/dynamic	100/90 lb*		150/135 lb*	

Step 3

Preparing drawer boxes

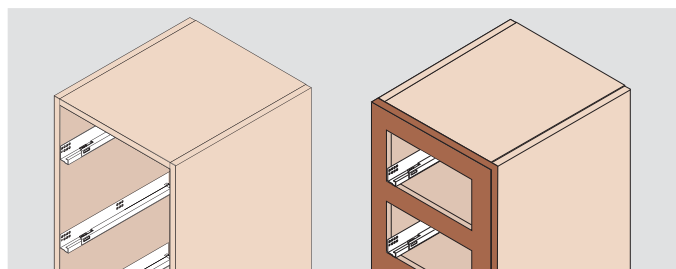
Build drawers according to the specifications given for the TANDEM runners you chose and the measurements determined in Step 1. Install appropriate locking devices and bore holes to accept rear hooks.



Step 4

Attach runners to cabinet

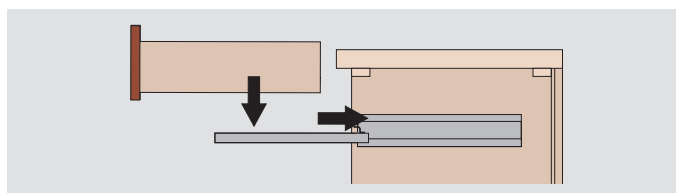
Using the mounting information given for the TANDEM runners you chose, mount the TANDEM runners in the cabinet.



Step 5

Insert drawers

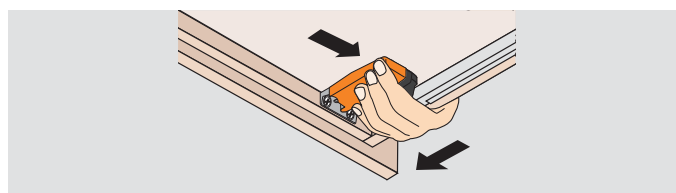
Extend the drawer runners fully. Place the drawer on the runners and close. The locking devices automatically engage with the runners. Make adjustments if necessary.



Step 6

Drawer removal

Squeeze orange handles on locking devices and pull drawer straight out and up.

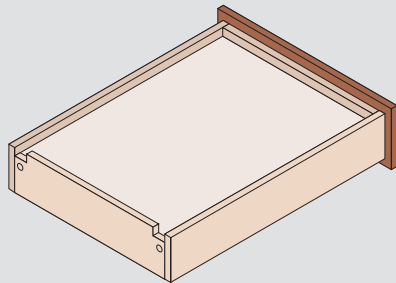


Drawer preparation



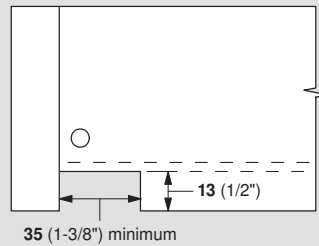
Rear notching

Dimensions



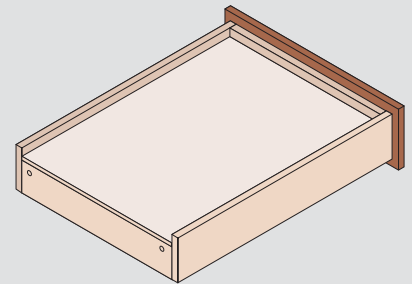
Drawers must be notched in the back to accommodate TANDEM runners

Rear view



The notches must be flush with the drawer sides and bottom

Option — no notching



Make the back panel shorter and extend the drawer bottom to the back of the drawer

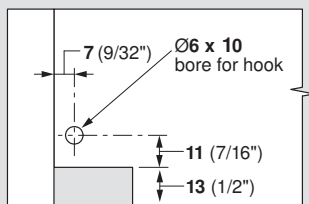
NOTE: TIP-ON for TANDEM plus requires **85** (3-11/32") notch

page 40

Rear boring

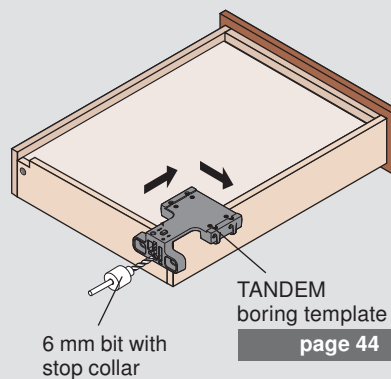
Dimensions

Rear view



Drawers require 6 mm holes bored on each side in the back panel to accept the hooks in the back of TANDEM runners

Boring



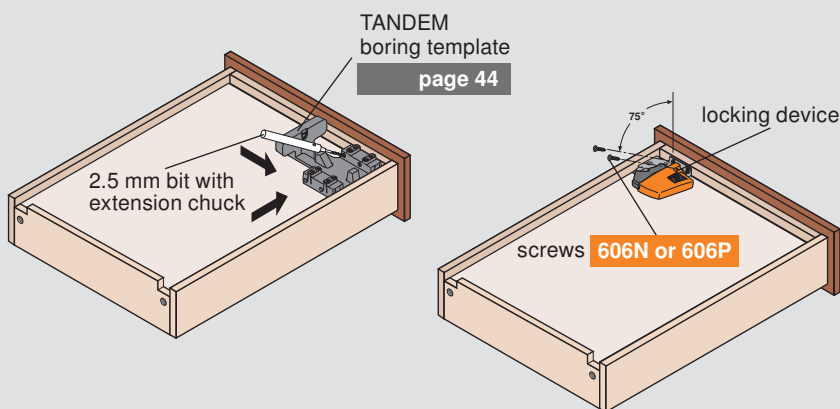
- 1 Place template over the drawer side
- 2 Position template so that the center rib rests against the inside face of the drawer side
- 3 Set stop collar on 6 mm bit so that it will bore **10** (13/32") deep
- 4 Hold template firmly and bore hole
- 5 Repeat on other side

page 44

NOTE: Using the T65.1600 template is highly recommended

Locking devices

Installation



- 1 Position the 2.5 mm drill bit into the extension chuck so that it will bore **10** (13/32") deep
- 2 Place template into the front corner of the drawer
- 3 Bore two holes and repeat on other side
- 4 Attach locking devices with #6 x 5/8" deep thread wood screws (606N or 606P)

NOTE: The mounting screws must go in at a precise angle and the locking device must fit flush to the drawer bottom to ensure proper function of the complete drawer system

NOTE: Using the **T65.1600** TANDEM boring template is highly recommended