

YOU HAD ME AT YELLOW

GET YOUR BRIOCHE ON!

BY BEATA JEZEK

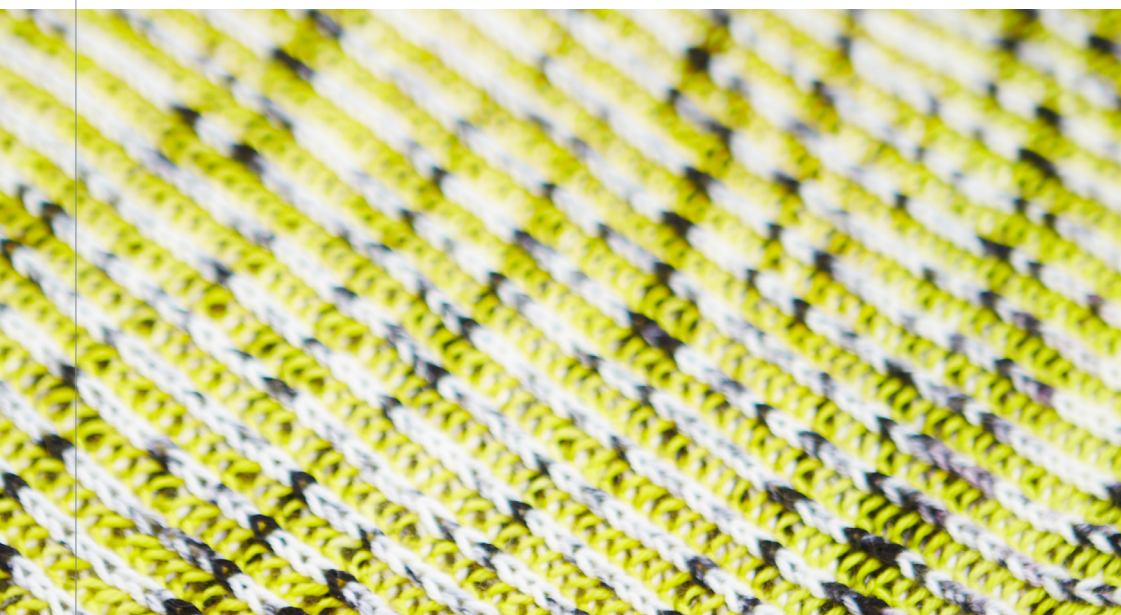




< 2



THIS IS A STRIKING BRIOCHE SHAWL, VERY WARM DUE TO THE ALPACA CONTENT IN THE YARN BUT NOT TOO BULKY TO WEAR. CHOOSE TWO HIGH CONTRAST COLOURS FOR THE MOST EYE-CATCHING RESULTS. THE SHAPING IS SIMPLE AND EASY TO MEMORISE MAKING THIS A RELAXING KNIT.



ABBREVIATIONS

RS - right side

WS - wrong side

p - purl

k - knit

brk - brioche knit

brp - brioche purl

sl1yo - slip one + yarnover

brkyobrk - Two stitches spring out of the center of one stitch (the marked stitch) with this increase. In the marked stitch: work a brkyobrk as follows: brk1, yo (yarn forward under needle then over needle to back), then brk1 into same stitch. 2 sts increased. On the next row, treat the yo as brp.

brRsl dec (a 2-stitch decrease that slants to the right, involving 3 sts) = slip the first stitch A knitwise, knit the next stitch B, pass the slipped stitch A over, place stitch on left hand needle and pass the following stitch C over. Place st on right hand needle.

sl1wyif - slip one stitch purlwise, with yarn in front

sl1wyib - slip one stitch purlwise, with yarn in back

OVERVIEW

YARN	Colour A: 2 skeins Hedgehog Fibres Alpaca DK, 100g/225m. Pictured in Magpie. Colour B: 2 skeins Hedgehog Fibres Alpaca DK, 100g/225m. Pictured in UFO.
NEEDLE	3.75mm circular needle, or size to obtain gauge. Circular needle would be better due to the width, but the garment is worked flat.
GAUGE	14 stitches and 22 rows = 10cm in two colour brioche stitch, after blocking
DIMENSIONS	190cm wingspan and 50cm deep at the point.
TOOLS	Darning needle
SKILLS REQUIRED	Two colour brioche stitch, casting on, casting off, picking up stitches.
SHARE	#youhadmehhf We love to see your progress!

< 4

We work hard to ensure our patterns are precise, thorough, and comprehensive. If you get stuck, need help, or think you may have found an error in the pattern and want our technical team to check it out, please drop us a note at info@hedgehogfibres.com

INSTRUCTIONS

Using Colour A, cast on 5 stitches.

RS

Setup Row 1, Colour A: sl1wyib, sl1yo, k1, sl1yo, k1, slide stitches to the other side of the needle

Setup Row 2, Colour B: sl1wyib, brp, sl1yo, brp, sl1wyif, turn work

WS

Setup Row 3, Colour A: sl1wyif, sl1yo, brp, sl1yo, k1, slide stitches to the other side of the needle

Setup Row 4, Colour B: sl1wyib, brk, sl1yo, brk, sl1wyib

RS

Row 1, Colour A: sl1wyif, sl1yo, brkyobrk, sl1yo, k1, slide stitches to the other side of the needle

Row 2, Colour B: sl1wyif, brp, sl1yo, p, sl1yo, brp, sl1wyif, turn work

WS

Row 3, Colour A: sl1wyif, sl1yo, brp, sl1yo, brp, sl1yo, k1, slide stitches to the other side of the needle

Row 4, Colour B: sl1wyib, (brk, sl1yo) x2, brk, sl1wyib, turn work

RS

Row 5, Colour A: sl1wyif, sl1yo, brk, sl1yo, brkyobrk, sl1yo, k1, slide stitches to the other side of the needle

Row 6, Colour B: sl1wyif, (brp, sl1yo) to last 2 stitches, brp, sl1wyif, turn work

WS

Row 7, Colour A: sl1wyif, (sl1yo, brp) to last 2 stitches, sl1yo, k1, slide stitches to the other side of the needle

Row 8, Colour B: sl1wyib, (brk, sl1yo) to last 2 stitches, brk, sl1wyib, turn work

RS

Row 9, Colour A: sl1wyif, sl1yo, brRsl dec, sl1yo, brkyobrk, sl1yo, k1, slide stitches to the other side of the needle

Row 10, Colour B: sl1wyif, (brp, sl1yo) to last 2 stitches, brp, sl1wyif, turn work

WS

Row 11, Colour A: sl1wyif, (sl1yo, brp) to last 2 stitches, sl1yo, k1, slide stitches to the other side of the needle

Row 12, Colour B: sl1wyib, (brk, sl1yo) to last 2 stitches, brk, sl1wyib, turn work

RS

Row 13, Colour A: sl1wyif, (sl1yo, brk) to last 4 sts, sl1yo, brkyobrk, sl1yo, k1, slide stitches to the other side of the needle

Row 14, Colour B: sl1wyif, (brp, sl1yo) to last 2 stitches, brp, sl1wyif, turn work

WS

Row 15, Colour A: sl1wyif, (sl1yo, brp) to last 2 stitches, sl1yo, k1, slide stitches to the other side of the needle

Row 16, Colour B: sl1wyib, (brk, sl1yo) to last 2 stitches, brk, sl1wyib, turn work

INSTRUCTIONS

RS

Row 17, Colour A: sl1wyif, sl1yo, brRsl dec, (sl1yo, brk) to last 4 sts, sl1yo, brkyobrk, sl1yo, k1, slide stitches to the other side of the needle

Row 18, Colour B: sl1wyif, (brp, sl1yo) to last 2 stitches, brp, sl1wyif, turn work
WS

Row 19, Colour A: sl1wyif, (sl1yo, brp) to last 2 stitches, sl1yo, k1, slide stitches to the other side of the needle

Row 20, Colour B: sl1wyib, (brk, sl1yo) to last 2 stitches, brk, sl1wyib, turn work

Repeat rows 13 to 20 until 110 stitches or to desired length.
Bind off loosely on RS with Colour A.

Edging

Along the edge that has the decreases, with the RS facing, using Colour A pick up stitches as follows:

RS

Row 1, Colour A: Pick up and knit into a chain edge stitch, yo. Repeat along the whole edge and end with a picked up stitch (don't end with a yo), slide stitches to the other side of the needle

Row 2, Colour B: sl1wyib, (p1, sl1yo), to last 2 stitches, p1, sl1wyif, turn work
WS

Row 3, Colour A: sl1wyif, (sl1yo, brp) to last 2 stitches, sl1yo, k1, slide stitches to the other side of the needle

Row 4, Colour B: sl1wyib, (brk, sl1yo) to last 2 stitches, brk, sl1wyib, turn work

RS

Row 5, Colour A: sl1wyif, (sl1yo, brk) to last 2 stitches, sl1yo, k1, slide stitches to the other side of the needle

Row 6, Colour B: sl1wyif, (brp, sl1yo) to last 2 stitches, brp, sl1wyif, turn work
WS

Row 7, Colour A: sl1wyif, (sl1yo, brp) to last 2 stitches, sl1yo, k1, slide stitches to the other side of the needle

Row 8, Colour B: sl1wyib, (brk, sl1yo) to last 2 stitches, brk, sl1wyib, turn work


Repeat rows 5-8 six more times or until desired width.
Bind off loosely on RS with Colour A.

Finishing

Weave in your ends, block lightly to smooth out stitches.

Care Notes

Whether you are using commercially dyed yarn or lovely hand-dyed skeins, please keep in mind that colours might bleed. None of the examples shown bled, but I always knit up a sample and wash it as you would your finished item to be sure. Please use common sense, reds and crazy pinks tend to bleed the most, any red/white combo is probably not a good idea (we separate laundry, right?). To minimise bleeding, gently soak the swatch and finished item in cold water with a mild detergent or wool wash. The gentler you wash your project the better it will look over time.

<<  7>

All images, text and illustrations © Hedgehog Fibres Ltd.

This pattern may be printed and used for personal, non-commercial use only and may not be reproduced, sold or distributed.

CONTACT

info@hedgehogfibres.com

WEBSITE

www.hedgehogfibres.com