

Hedgehog fibres
Hand-dyed yarns

STENCIL

by Beata Jezek



Extra warm and snuggly shawl that will double as a lap blanket. Thick, cushy and voluminous wrap, that's mindless and easy to knit. You can opt for a sleek, high contrast neutrals (Graphite with three pale speckles) or a fun version full of random stripes, speckles and colours.

FINISHED SIZE

approx. 200cm wingspan and 50cm deep

NEEDLE

4mm circular needle, you might need a long cable towards the end due to large number of stitches.

YARN

Hedgehog Fibres Merino DK, approx. 1000-1200m in total

Black and white version

Contrast colour (CC): Graphite, 3 skeins

Main colour (MC): 1 skein each, in this order: Typewriter, Seed, Urchin

Blue and yellow version

Contrast colour (CC): Butter, 3 skeins

Main colour (MC): in random stripes: Boombox, Daydream, Fool's Gold, Zephyr, Electric

GAUGE

16 stitches and 23 rows = 10cm in brioche pattern. Measurement taken after washing and laying flat.

ABBREVIATIONS

RS - right side

WS - wrong side

p - purl

k - knit

pm - place marker

m - marker

brk - brioche knit

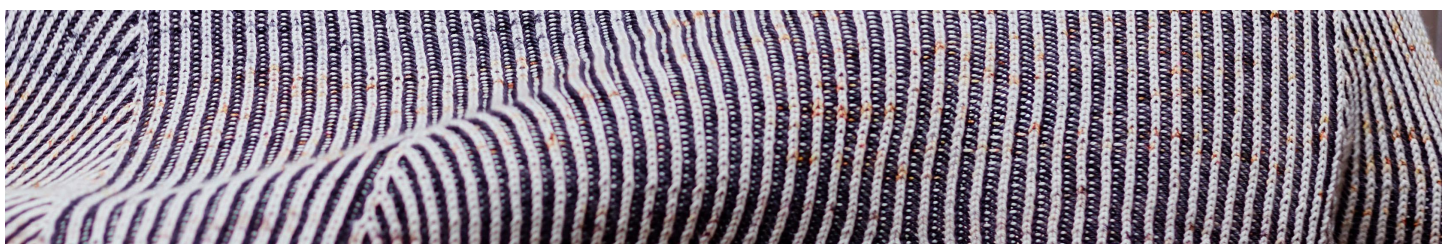
brp - brioche purl

sl1yo - slip one + yarnover

brkyobrk - Two stitches spring out of the center of one stitch (the marked stitch) with this increase. In the marked stitch: work a brkyobrk as follows: brk1, yo (yarn forward under needle then over needle to back), then brk1 into same stitch. 2 sts increased.

wyif - with yarn in front

wyib - with yarn in back



Hedgehog fibres

Hand-dyed yarns




PATTERN NOTES

Instructions are written using MC for the foreground (right side) and CC for the background (wrong side). Feel free to change colours as you wish. The sample shows speckled yarns as the MC and Graphite/Butter for CC.

INSTRUCTIONS

Using CC cast on 3 stitches and knit 115 i-cord rows.

Setup Row 1:

RS, MC: slip 3, pick up and knit 115 stitches along i-cord edge, do not turn, slide stitches to the other needle

RS, CC: knit 3, (sl1yo, p1) to last stitch, sl1yo, turn to work other side

Setup Row 2:

WS, MC: (brp, sl1yo) to last 4 stitches, brp, slip 3 wyif, slide stitches to the other needle

WS, CC: pick up and knit 3 from cast on edge (where i-cord begins), (sl1yo, brk) to last 4 stitches, sl1yo, slip 3 wyif, turn to work other side

Section 1

Row 1 (increase row):

RS, MC: slip 3, brkyobrk, sl1yo, brkyobrk, pm, (sl1yo, brk) until 4 sts. brkyobrk, slip 3 wyib, slide stitches to the other needle

RS, CC: k3, (sl1yo, brp), until 4 sts., sl1yo, slip 3 wyif, turn to work other side

Row 2:

WS, MC: slip 3, (brp, sl1yo) until 4 sts., brp, slip 3 wyif, slide stitches to the other needle

WS, CC: k3, (sl1yo, brk), until 4 sts., sl1yo, slip 3 wyif, turn to work other side

Row 3:

RS, MC: slip 3, (brk, sl1yo) until 4 sts., brk, slip 3 wyib, slide stitches to the other needle

RS, CC: k3, (sl1yo, brp), until 4 sts., sl1yo, slip 3 wyif, turn to work other side

Row 4:

WS, MC: slip 3, (brp, sl1yo) until 4 sts., brp, slip 3 wyif, slide stitches to the other needle

WS, CC: k3, (sl1yo, brk), until 4 sts., sl1yo, slip 3 wyif, turn to work other side

Row 5 (increase row):

RS, MC: slip 3, brkyobrk, (sl1yo, brk) to 2 st. before m, sl1yo, brkyobrk, (sl1yo, brk) until 5 sts. sl1yo, brkyobrk, slip 3 wyib, slide stitches to the other needle

RS, CC: k3, (sl1yo, brp), until 4 sts., sl1yo, slip 3 wyif, turn to work other side

Row 6:

WS, MC: slip 3, (brp, sl1yo) until 4 sts., brp, slip 3 wyif, slide stitches to the other needle

WS, CC: k3, (sl1yo, brk), until 4 sts., sl1yo, slip 3 wyif, turn to work other side

Row 7:

RS, MC: slip 3, (brk, sl1yo) until 4 sts., brk, slip 3 wyib, slide stitches to the other needle

RS, CC: k3, (sl1yo, brp), until 4 sts., sl1yo, slip 3 wyif, turn to work other side

Row 8:

WS, MC: slip 3, (brp, sl1yo) until 4 sts., brp, slip 3 wyif, slide stitches to the other needle

WS, CC: k3, (sl1yo, brk), until 4 sts., sl1yo, slip 3 wyif, turn to work other side

Repeat rows 5-8, twelve more times
205 stitches in total on the needle.

Section 2

Place marker after stitch 158 from beg. of row (47 sts. from end of row).

Row 1: (increase row):

RS, MC: slip 3, brkyobr, (sl1yo, brk) to 2 st. before m, sl1yo, brkyobr, (sl1yo, brk) until 1 st. before next marker, sl1yo, brkyobr, (sl1yo, brk) until 5 sts. sl1yo, brkyobr, slip 3 wyib, slide stitches to the other needle

RS, CC: k3, (sl1yo, brp), until 4 sts., sl1yo, slip 3 wyif, turn to work other side

Row 2:

WS, MC: slip 3, (brp, sl1yo) until 4 sts., brp, slip 3 wyif, slide stitches to the other needle

WS, CC: k3, (sl1yo, brk), until 4 sts., sl1yo, slip 3 wyif, turn to work other side

Row 3:

RS, MC: slip 3, (brk, sl1yo) until 4 sts., brk, slip 3 wyib, slide stitches to the other needle

RS, CC: k3, (sl1yo, brp), until 4 sts., sl1yo, slip 3 wyif, turn to work other side

Row 4:

WS, MC: slip 3, (brp, sl1yo) until 4 sts., brp, slip 3 wyif, slide stitches to the other needle

WS, CC: k3, (sl1yo, brk), until 4 sts., sl1yo, slip 3 wyif, turn to work other side

Repeat rows 1-4, five more times.

253 stitches in total on the needle

Section 3

Place marker after stitch 104 from beg. of row. (This should be after stitch 25 after 1st marker)

Row 1: (increase row):

RS, MC: slip 3, brkyobr, (sl1yo, brk) to 2 st. before first m, sl1yo, brkyobr, (sl1yo, brk) until 1 st. before next marker, sl1yo, brkyobr, (sl1yo, brk) until 1 st. before next marker, sl1yo, brkyobr, (sl1yo, brk) until 5 sts. sl1yo, brkyobr, slip 3 wyib, slide stitches to the other needle

RS, CC: k3, (sl1yo, brp), until 4 sts., sl1yo, slip 3 wyif, turn to work other side

Row 2:

WS, MC: slip 3, (brp, sl1yo) until 4 sts., brp, slip 3 wyif, slide stitches to the other needle

WS, CC: k3, (sl1yo, brk), until 4 sts., sl1yo, slip 3 wyif, turn to work other side

Row 3:

RS, MC: slip 3, (brk, sl1yo) until 4 sts., brk, slip 3 wyib, slide stitches to the other needle

RS, CC: k3, (sl1yo, brp), until 4 sts., sl1yo, slip 3 wyif, turn to work other side

Row 4:

WS, MC: slip 3, (brp, sl1yo) until 4 sts., brp, slip 3 wyif, slide stitches to the other needle

WS, CC: k3, (sl1yo, brk), until 4 sts., sl1yo, slip 3 wyif, turn to work other side

Repeat rows 1-4, five more times.

313 stitches in total on the needle.

Section 4

Place marker after stitch 180 from beg. of row place marker.

Row 1: (increase row):

RS, MC: slip 3, brkyobr, (sl1yo, brk) to 2 st. before first m, sl1yo, brkyobr, (sl1yo, brk) until 1 st. before next marker, sl1yo, brkyobr, (sl1yo, brk) until 1 st. before next marker, sl1yo, brkyobr, (sl1yo, brk) until 5 sts. sl1yo, brkyobr, slip 3 wyib, slide stitches to the other needle

RS, CC: k3, (sl1yo, brp), until 4 sts., sl1yo, slip 3 wyif, turn to work other side

Row 2:

WS, MC: slip 3, (brp, sl1yo) until 4 sts., brp, slip 3 wyif, slide stitches to the other needle

WS, CC: k3, (sl1yo, brk), until 4 sts., sl1yo, slip 3 wyif, turn to work other side

Row 3:

RS, MC: slip 3, (brk, sl1yo) until 4 sts., brk, slip 3 wyib, slide stitches to the other needle

RS, CC: k3, (sl1yo, brp), until 4 sts., sl1yo, slip 3 wyif, turn to work other side



Row 4:

WS, MC: slip 3, (brp, sl1yo) until 4 sts., brp, slip 3 wyif, slide stitches to the other needle

WS, CC: k3, (sl1yo, brk), until 4 sts., sl1yo, slip 3 wyif, turn to work other side

Repeat rows 1-4, five more times.
385 stitches in total on the needle.

Bind off all stitches using an i-cord bind off using CC as follows:

*k2, sl1 knit-wise, return to left needle, k2tog through the back loop, return the 3 stitches back to left needle. Repeat from * until you have 3 stitches on left needle and 3 stitches remain on right needle. Use Kitchener stitch to graft these together for a seamless look.

There are many tutorials online, for example this one:

<https://www.youtube.com/watch?v=wIUDB3Sv0g8>

Block lightly, ideally just gently wash and lay flat.

Notes on washing and combining colours:

Gentle washing will keep your project beautiful for longer. For best results, hand-wash your finished shawl with a drop of detergent or wool wash. If combining light and dark colours, please swatch as the yarns may bleed. This is especially important if using deep reds or pinks with white or cream yarns. To minimise bleeding, hand-washing in cold water is the safest option. The cold water will prevent any dye from sticking to lighter yarns. Strong pinks may cause staining on white yarns, whether you are using commercially dyed yarn or lovely hand-dyed skeins.

I like to soak the project in a cold tap water with a bit of washing up liquid, and then I use the spin cycle on the washing machine (usually the shortest cycle, spin only) to remove excess water before laying out flat.



Hedgehog fibres

Hand-dyed yarns

