

Hedgehog fibres
Hand-dyed Yarns

www.hedgehogfibres.com



MORRÍGAN

by Beata Jezek



Morrígan, the great queen, is a goddess of Irish mythology. She and her sisters appear in both the epic cycles (the Fianníocht and the Ruraíocht). Morrígan is a goddess of War and an omen of death, but also a symbol of fertility. Morrígan, often taking the form of a crow, also inspired courage in warriors and would even fight on the side of the rightful king. She also offers legendary warrior Cú Chulainn many chances to turn away from the battle which she prophesies will end in his death.

Heading into an ominous time of year, this shawl should give you strength and gird you against the cold and dark.

YARN

Pure Cashmere Lace, 400m/55g by Hedgehog Fibres: 2 skeins. Pictured in 'Grape' colourway.

NEEDLE

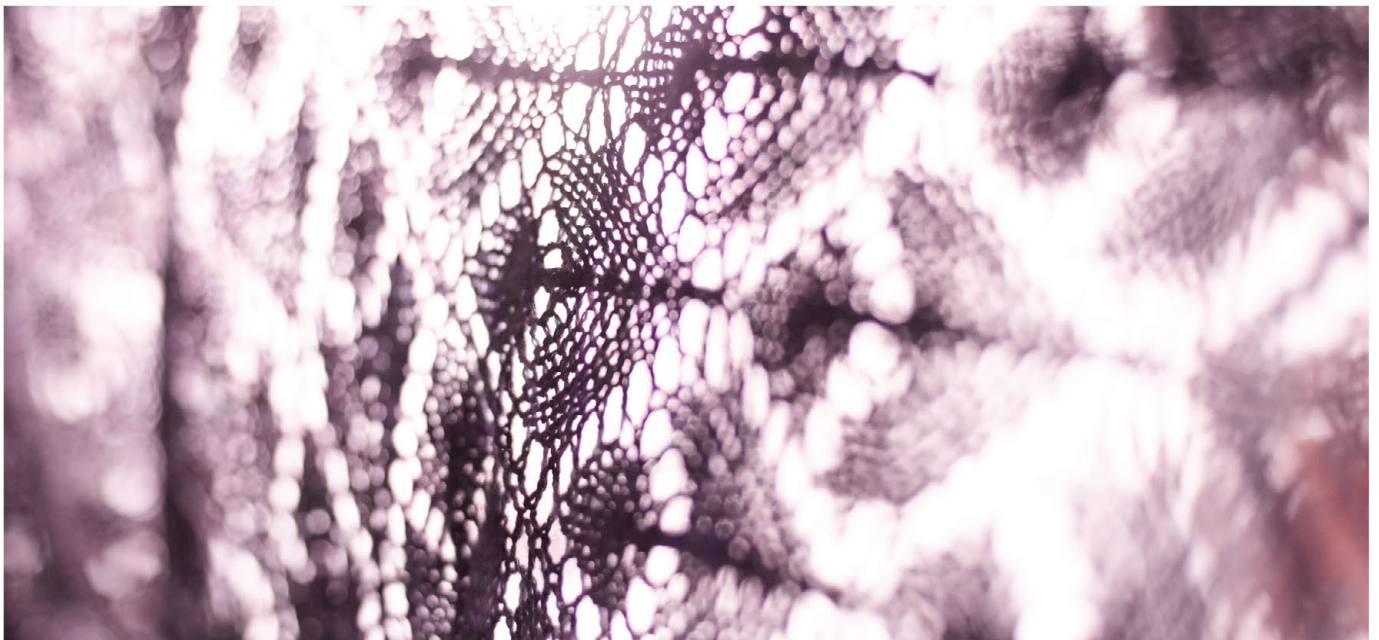
4mm, 24" or longer pair of circular needles. The shawl is knitted flat, however the circular needle will provide more room for the large number of stitches.

GAUGE

Not too important. My shawl used approx. 690m, using the recommended yarn and needle size.

SIZE

my shawl is approx. 190cm wingspan and 90cm along the center spine, after blocking.



pattern and pictures © Hedgehog Fibres

PATTERN NOTES

Each chart shows only the stitches between markers 1 and 2 and the center "spine" stitches. The chart must then be repeated across the stitches between markers 3 and 4. There's only one half of the shawl charted, you must repeat the chart twice for each row - once for each half of the shawl.

The chart only shows odd rows - the right side of your knitting. All even rows are to be purled across.

All first stitches are slipped, on wrong side (WS) purlwise on right side (RS) knitwise - this will result in nice chain-like edge. But the way you slip or don't slip is not vital, just try to be consistent with the method you choose.

INSTRUCTIONS

Cast on 5 stitches

Preparation row, WS: Sl 1, place marker, p1, place marker, p1, place marker, p1, place marker, p1

Now you have 5 stitches, separated by markers. The first and last stitches will become the edge stitches (E) and the center stitch will be the center 'spine' stitch (C). These three stitches are marked in the chart.

Work rows 1-16 of the Setup Chart. Row 16 is a purl row, not charted.

Work rows 1-28 of Repeat Chart 4 times, repeating the purple section as necessary.

Row 28 is a purl row, not charted.

work rows 1-14 of Repeat Chart. Row 14 is a purl row, not charted.

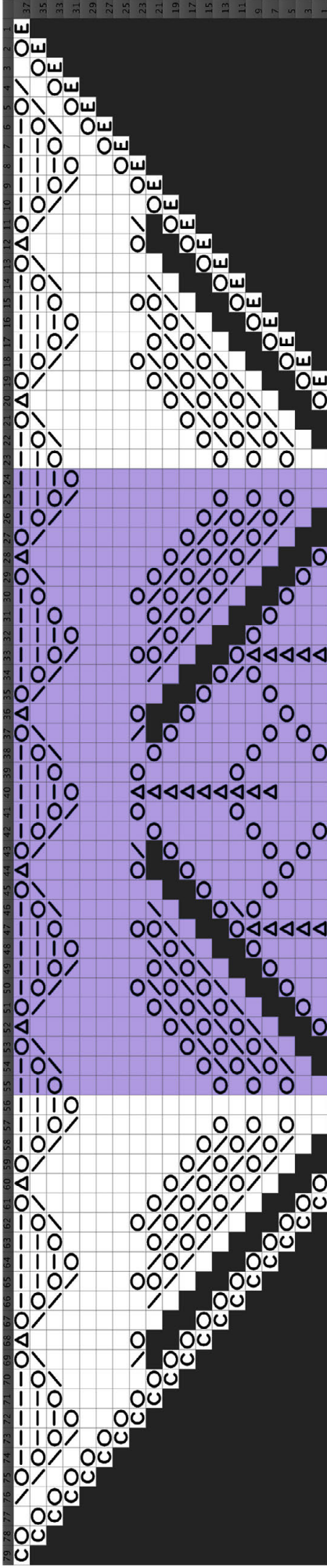
Work rows 1-18 of the Edging Chart once, repeating the purple section as necessary. Row 18 is a purl row, not charted.

Cast off loosely, using a Sewn cast off. There are many tutorials on the internet.

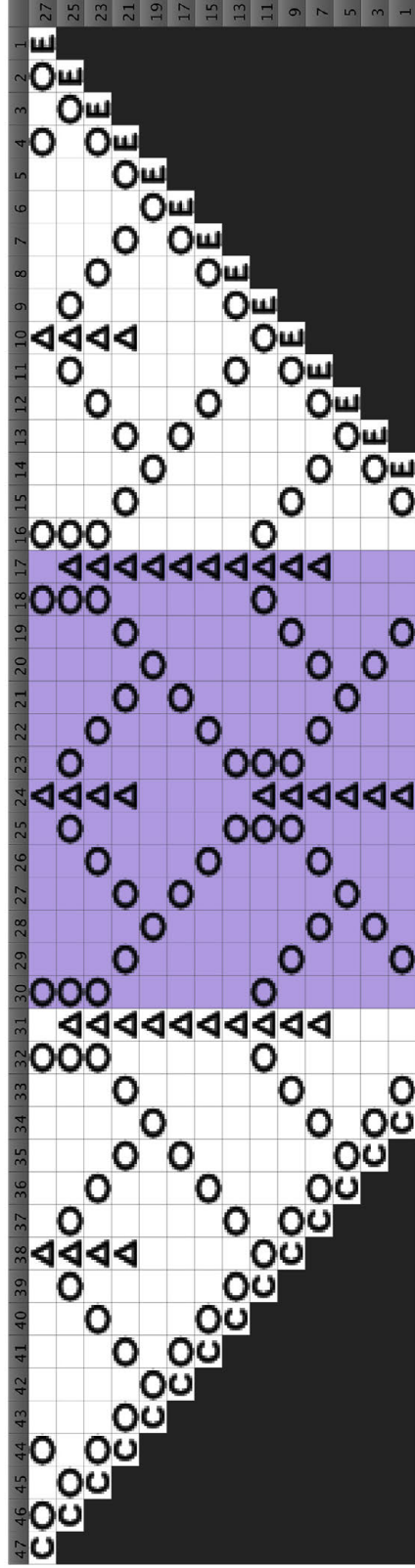
Block severely, especially if using the recommended yarn, the Pure Cashmere Lace loves to be blocked hard - it becomes light and cobweb-like.



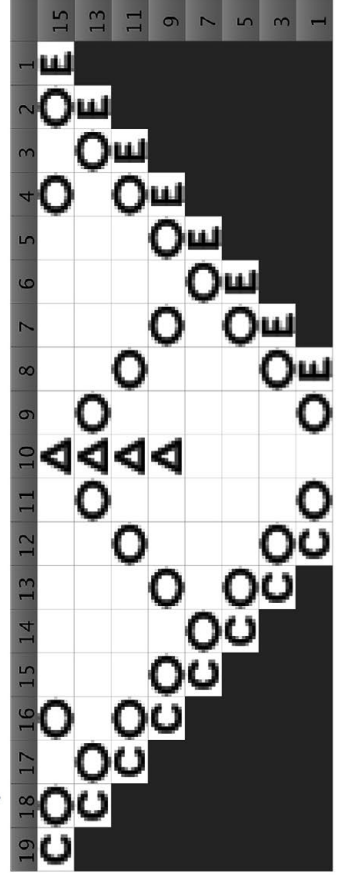
Edging chart



Repeat chart



Setup chart



Key



(RS) knit

(WS) purl

(RS) purl

(WS) knit

yarn over

slip, slip knit

knit 2 together

no stitch

central double decrease

slip two stitches together as if to knit, k1

pass the 2 slipped stitches over

edge stitch

centre stitch

