

# FORTUNE COOKIE

EXTRA LARGE COZY SHAWL

BY BEATA JEZEK





< 2



LARGE, GENEROUS WRAP TO KEEP THE CHILL OFF ON COLD NIGHTS. BEAUTIFUL KNITTED LACE MOTIF THAT IS LACE ON BOTH RIGHT AND WRONG SIDES, BUT IT IS NOT TOO DIFFICULT. FINISHED OFF WITH A RIBBED EDGING.

CHART ONLY, NO WRITTEN INSTRUCTIONS.

SKILLS NECESSARY: CHART READING, YARN OVER, SSK, K2TOG, P2TOG, P2TOG TBL, BLOCKING OF THE FINISHED PIECE.



## ABBREVIATIONS

**RS** - right side

**WS** - wrong side

**k** - knit

**p** - purl

**grey no stitch:** No stitch

**k2tog:** Knit 2 stitches together

**p2tog:** Purl 2 together

**ssk:** Slip, slip, knit

**P2tog tbl:** purl two together through the back loops

**yo:** Yarn over

**PM:** place marker

**SM:** slip marker

**M1:** make one, backwards loop method

# OVERVIEW

YARN	Tweedy, 230m/100g by Hedgehog Fibres: 4 skeins.
NEEDLE	4mm, the longest cable you have. The shawl is knitted flat, however the circular needle will provide more room for the large number of stitches towards the end. Adjust needle size to obtain correct gauge.
GAUGE	16 stitches x 20 rows is 10cm in stockinette, blocked by washing and pinning flat to dry. Gauge is not super important for lace knitting, though it may change your yarn requirements.
SIZE	Approx. 190cm wingspan and 110cm along the centre spine, after blocking.
< 4	
TOOLS	Stitch markers
SKILLS REQUIRED	Chart reading, yarn over, ssk, k2tog, p2tog, p2tog tbl, blocking of the finished piece.
SHARE	#fortunecookiesawl We love to see your progress!

We work hard to ensure our patterns are precise, thorough, and comprehensive. If you get stuck, need help, or think you may have found an error in the pattern and want our technical team to check it out, please drop us a note at [info@hedgehogfibres.com](mailto:info@hedgehogfibres.com)

# INSTRUCTIONS

Each chart shows only the stitches between markers 1 and 2. The chart must then be repeated across the stitches between markers 3 and 4.

i.e There's only one half of the shawl charted, you must repeat the chart twice for each row - once for each half of the shawl.

There's one centre stitch - purl this stitch on the WS and k through the back loop on the RS.

## Garter tab cast on

Cast on 4 sts provisionally. Knit 10 rows. Knit 11th row, then pick up 5 sts along the border of the small garter rectangle you have just knit, then undo the provisional cast on and put the 4 cast-on sts on the left hand needle, and knit them. (13 sts). Turn work. There's a [tutorial here](#) - bear in mind that the numbers are a bit different!

## Setup Chart:

Work Rows 1-20 as follows:

Row 1 (WS): k4, PM, chart row 1, PM, p1, PM, chart row 1, PM, k4 . (17 sts)  
Row 2 (RS): k4, SM, chart row 2, SM, k1tbl, SM, chart row 2, SM, k4 . (21 sts)  
Row 3 (WS) k4, SM, chart row 3, SM, p1, SM, chart row 3, SM, k4 . (25 sts)  
Row 4 (RS): k4, SM, chart row 4, SM, k1tbl, SM, chart row 4, SM, k4 . (29 sts)  
Row 5 (WS) k4, SM, chart row 5, SM, p1, SM, chart row 5, SM, k4 . (33 sts)

Continue as established - repeat the chart twice each row, with 4 stitches on either side that are kept in garter stitch and one central spine stitch.

## Body Chart:

Repeat 1: Work Rows 1-20 of Body Chart as established, repeat the chart twice each row, with 4 stitches on either side that are kept in garter stitch and one central spine stitch.

Repeat 2: Work Rows 1-20 of Body Chart as established, but repeat the stitches outlined in red three times on each half of the shawl.

Repeat 3: Work Rows 1-20 of Body Chart as established, but repeat the stitches outlined in red five times on each half of the shawl.

Repeat 4: Work Rows 1-19 of Body Chart as established, but repeat the stitches outlined in red seven times on each half of the shawl.

# INSTRUCTIONS

**Edging Chart:**

Work rows 1-12 of the Edging Chart as established, repeat the chart twice each row (repeat the stitches outlined in red 9 times on each half of the shawl), with 4 stitches on either side that are kept in garter stitch and one central spine stitch. The red section will be repeated 9x times per each half of the shawl.

**Border:**

Row 1 (RS): \*(k1tbl, m1)\*, k1tbl - this will double your stitches.

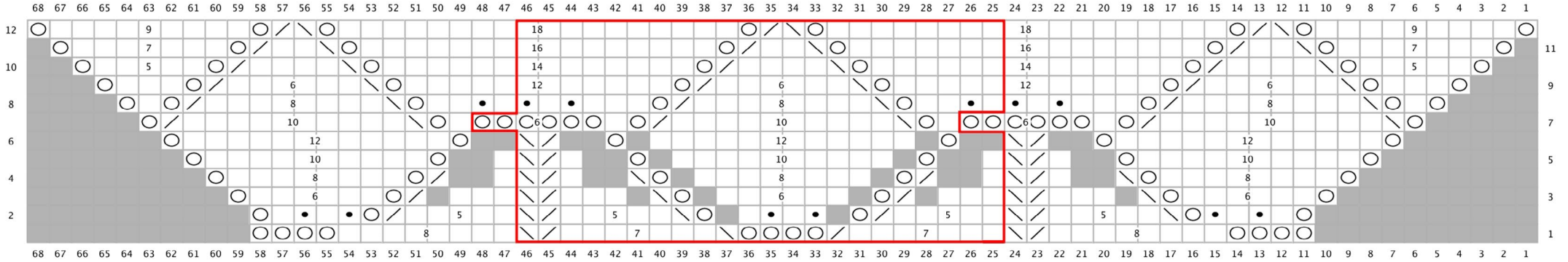
Row 2 (WS): \*(p1tbl, k1)\*, p1tbl

Row 3 (RS): \*(k1tbl, p1)\*, k1tbl

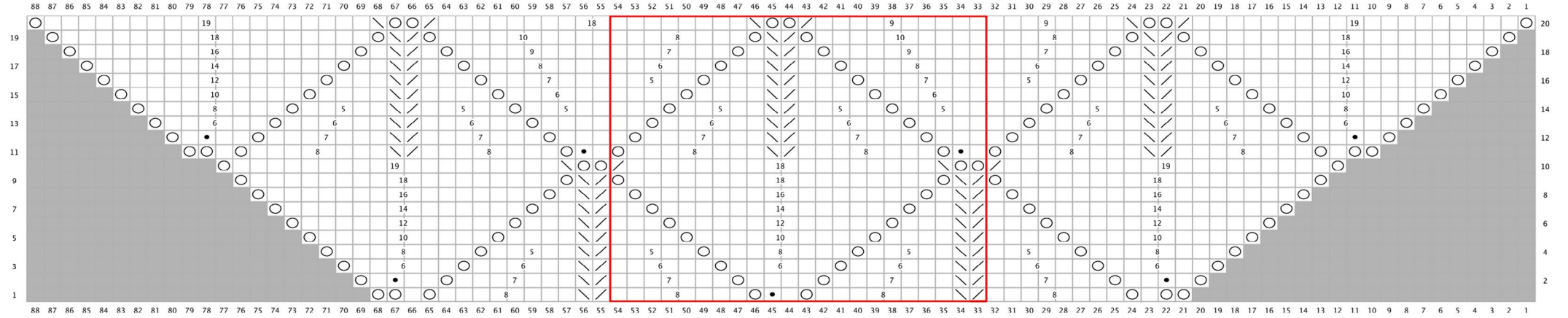
Repeat Rows 2 and 3 until desired width

Cast off stitches loosely - no special stretchy cast off necessary, as there's plenty of give in the ribbed border.

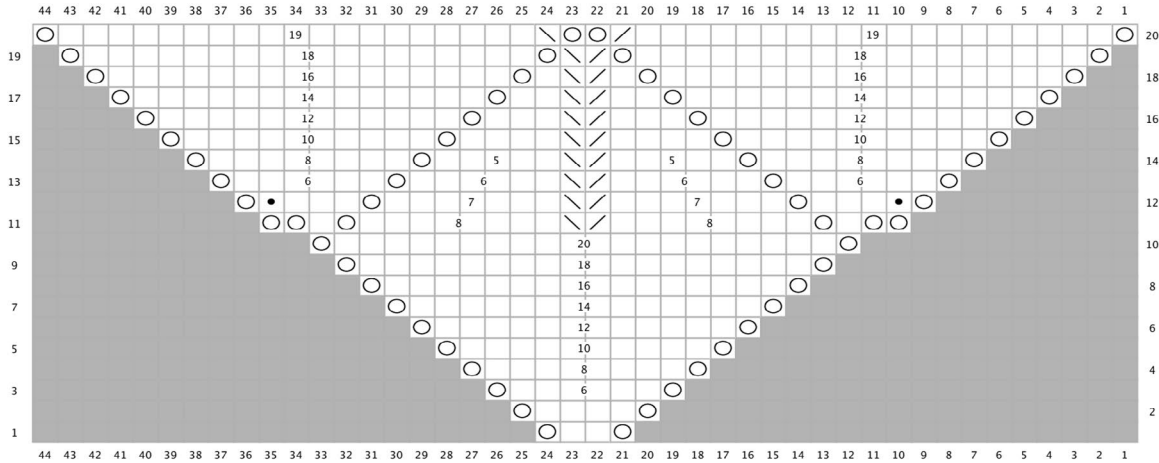
Edging Chart



Body Chart



Setup Chart



Key

-  RS: knit  
WS: purl
-  yo
-  RS: k2tog  
WS: p2tog
-  RS: ssk  
WS: p2tog tbl
-  grey no stitch
-  RS: k tbl  
WS: p tbl
-  RS: purl  
WS: knit
-  pattern repeat

## Care Notes

Whether you are using commercially dyed yarn or lovely hand-dyed skeins, please keep in mind that colours might bleed. None of the examples shown bled, but I always knit up a sample and wash it as you would your finished item to be sure. Please use common sense, reds and crazy pinks tend to bleed the most, any red/white combo is probably not a good idea (we separate laundry, right?). To minimise bleeding, gently soak the swatch and finished item in cold water with a mild detergent or wool wash. The gentler you wash your project the better it will look over time.

&lt; 8



All images, text and illustrations © Hedgehog Fibres Ltd.

This pattern may be printed and used for personal, non-commercial use only and may not be reproduced, sold or distributed.

CONTACT

info@hedgehogfibres.com

WEBSITE

www.hedgehogfibres.com