

CSB81 Mel Freelancing Natural Stone Basin 500mm

Notes:

- Freestanding
- Polymarble or solid surface composition
- 10 years manufacturers warranty

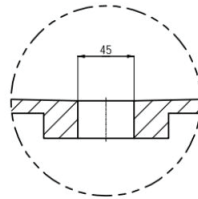
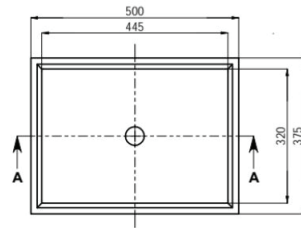
Finishes:

- Matte white
- Gloss white

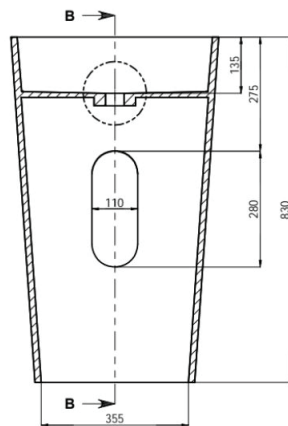
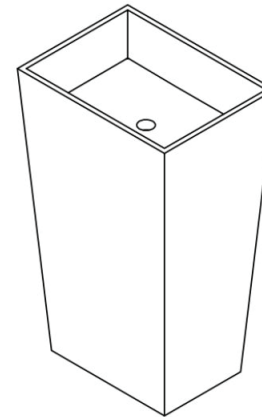
Options:

Stone waste
 (matte white)

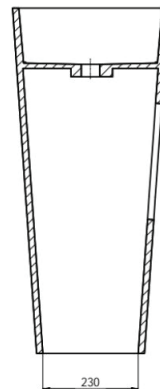
Size: 500 L x 375 W x 830 H (mm)



DETAIL D
 SCALE 1:3



SECTION A-A



SECTION B-B

Net Weight: 46kg
 Gross Weight: 52kg
 Unit: mm