

## CSB50 600MM Basin

### Notes:

- Wall Hung
- Polymarble or solid surface composition
- 10 years manufacturers warranty

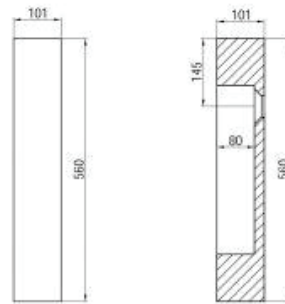
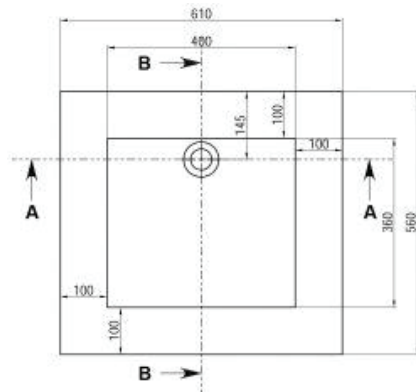
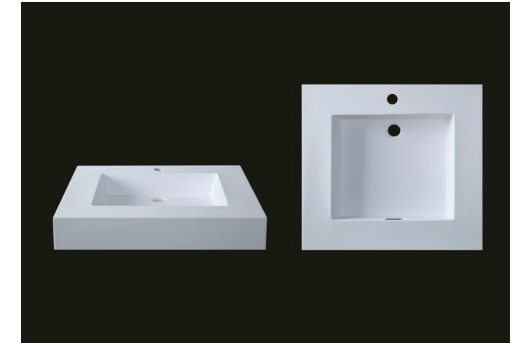
### Finishes:

- Matte white
- Gloss white

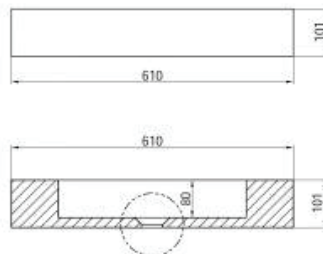
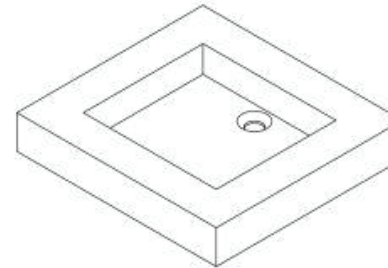
### Options:

Stone waste  
 (matte white)

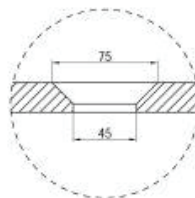
**Size:** 610 L x 560 W x 101 H (mm)



SECTION B-B



SECTION A-A



DETAIL D  
 SCALE 1:3

Net Weight: 14.5kg  
 Gross Weight: 17.5kg  
 Unit: mm