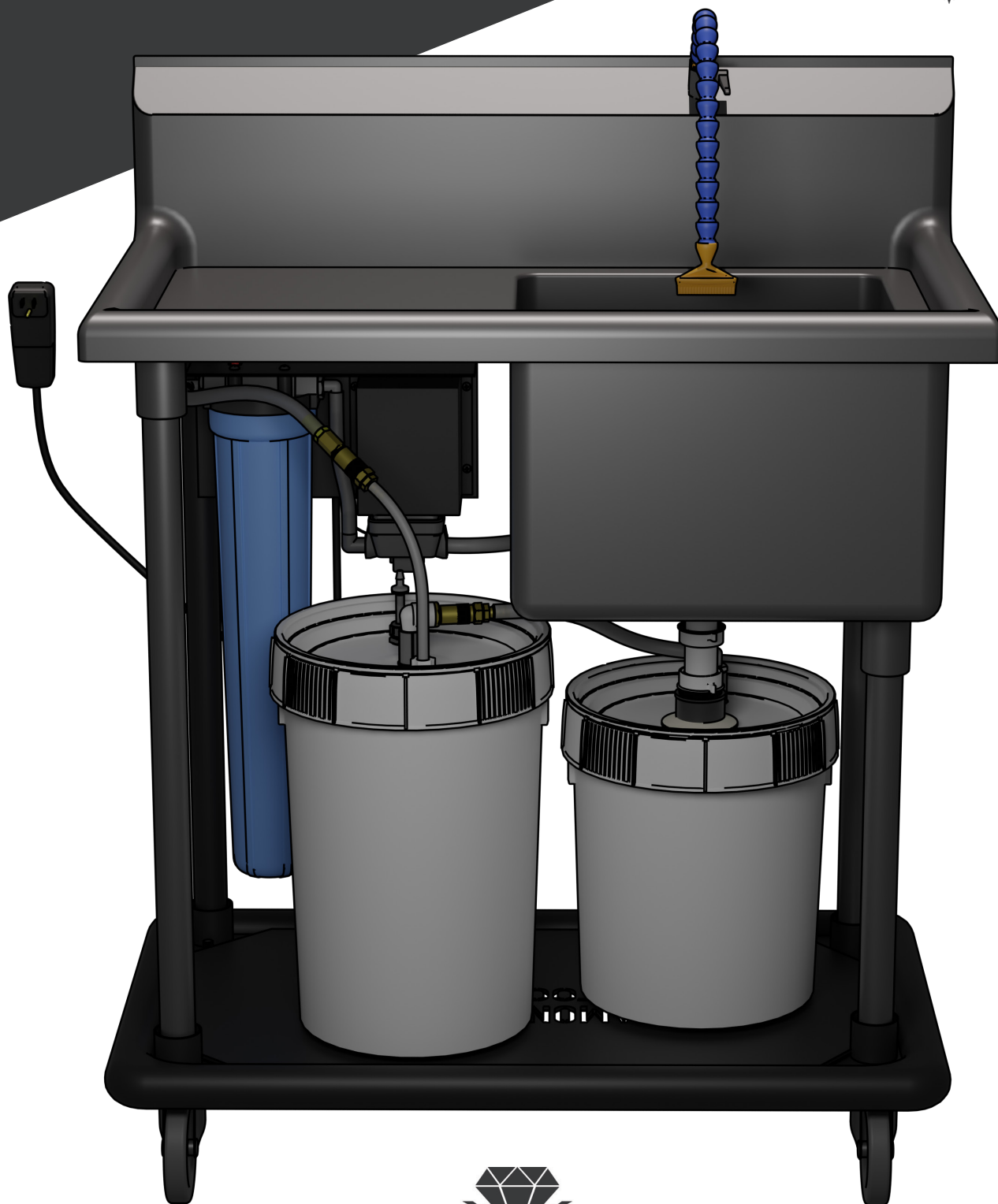
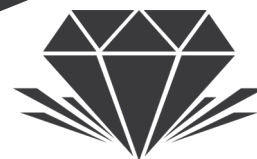


# The CINK

## User Manual





## CONTENTS

Introduction .....	2
Safety Precautions .....	3
Quick Start.....	4
Operation.....	6
Maintenance .....	7
Troubleshooting.....	11
Frequently Asked Questions .....	12
Parts & Accessories.....	13
Warranty.....	13

## INTRODUCTION

The CINK is a complete, self-contained system for cleanup of clay, clay water, pottery tools and accessories. The system is designed to prevent clay from going down drains in plumbing or septic systems.





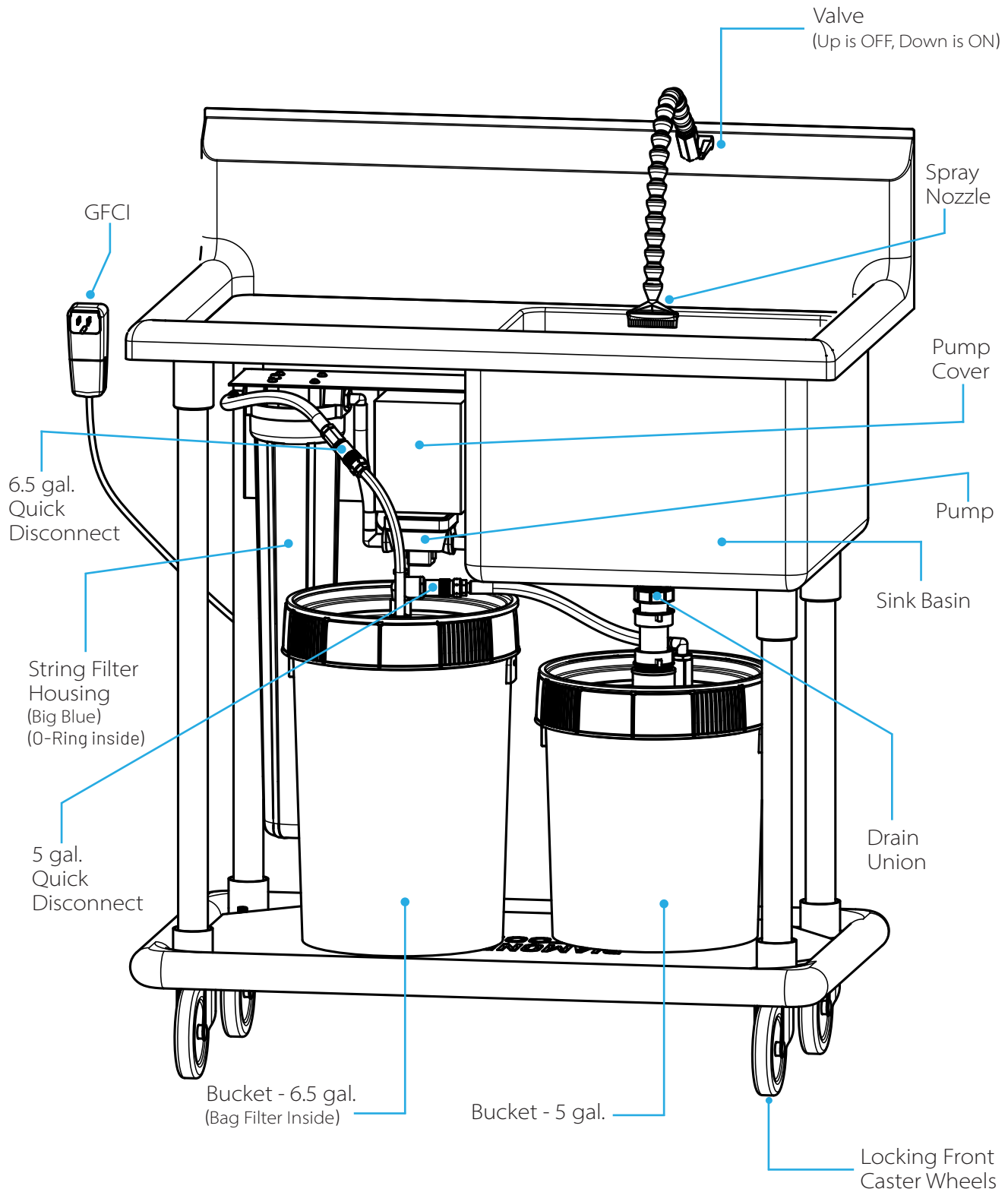
## SAFETY PRECAUTIONS

- Read this user manual completely before operating the unit.
- Follow all instructions and operating procedures.
- Avoid splashing water in eyes.
- Avoid splashing water on electrical components.
- Do not allow hoses to become bent or kinked.
- Do not leave the pump running for extended periods of time.
- Do not allow the pump to run "dry" without water in the system for more than 2 minutes.
- Do not allow the sink basin drain to become plugged while the system is running.
- Do not plug the drain of The CINK to fill the sink basin to wash parts.
- **CAUTION:** Use The CINK only in areas where if water spills it will not damage floors or carpeting, etc. Be aware that water may drip from hoses or spill when bucket lids or filters are removed.
- Position The CINK far away enough from electrical outlets so that water cannot splash on the outlet and plug.
- **WARNING!** Do not allow the power cord to lie in standing water at any time.
- Plug the power cord into a properly grounded, three-prong electric power outlet only. Always use a surge protector.
- Protect the power cord from being damaged, pinched, bent, stepped on, rolled over, stretched, etc.
- **WARNING!** Do not use any other electrical appliances on or near The CINK to avoid any shock danger.
- When performing maintenance on The CINK, unplug the power cord from the electric outlet.
- Always leave The CINK unplugged during a lightning storm and when it is not in use.
- To reduce the risk of fire or electric shock, do not expose The CINK to outdoor elements such as rain, snow, etc.
- Remove all water and clay from the entire system before freezing conditions exist.
- Engage the wheel caster brakes to keep the unit from moving when it is plugged in or is in use.
- When moving the cart from one location to another:
  1. Unplug the power cord from the electrical outlet.
  2. Remove all items from The CINK or drainboard.
  3. Unlock the locking casters.
  4. Move carefully to avoid tipping the unit over.
  5. Relock the wheel casters when The CINK is in its new spot.
- Do not place any objects over 25 pounds on the unit or sit on or stand on this product as the unit may tip over. Objects placed on The CINK may fall, causing injury or damage to the user or to the unit.
- The CINK is to be used only with clean water to clean clay, pottery tools and brushes, slip water buckets, sponges, splash pans, etc. (water-soluble, clay product materials).
- **WARNING!** This CINK and system contain NON-POTABLE WATER. DO NOT DRINK THE WATER IN THIS UNIT AND THE SPRAY NOZZLE.
- **CAUTION:** DO NOT use The CINK for: beverages, food residue, bodily fluids, chemicals, oil-based materials, paints or glazes. The CINK is NOT designed for disposal or filtering of hazardous or biohazardous materials.
- Do not attempt to connect The CINK to any septic or sewer plumbing systems.
- Disposal of water and material collected in this system should be in accordance with local laws and regulations.
- **CAUTION:** Freezing conditions will damage The CINK (see Page 6).





## QUICK START





# QUICK START

1

Remove CINK from pallet. Position CINK in final location next to plug.

2

Separate the quick disconnects and the drain union to remove buckets.

3

Add fresh water to buckets. Stop at fill lines.

4

Screw on bucket lids. Be sure they are **STRAIGHT** and **TIGHT**.

5

Remove blue filter housing. Twist clockwise.

6

Check string filter and ensure O-ring is in place. Fill with water to top.

7

Reattach big blue housing. Be sure it is straight and tight. Turn counter-clockwise to tighten.

8

Reconnect tubes with quick disconnects.

9

Remove clear gasket taped to 5-gal. bucket lid. Insert gasket into drain union.

10

Connect drain union.

11

Open valve.

12

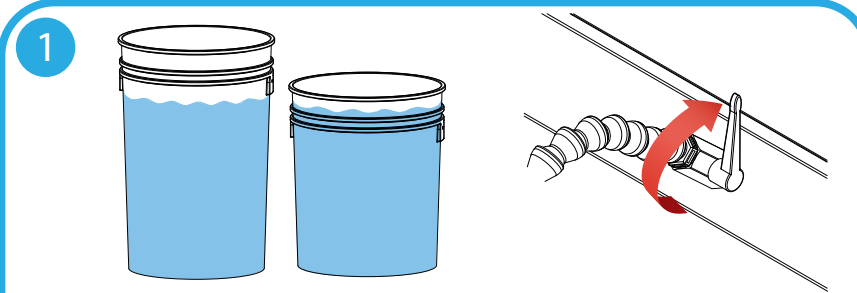
Plug in and let run for 1 minute.



## OPERATION

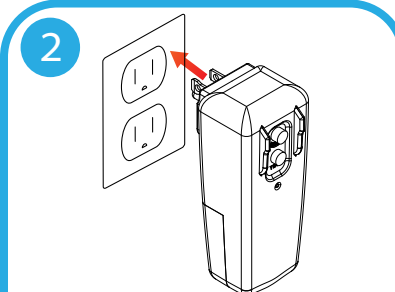
### Key Operating Steps

**1**



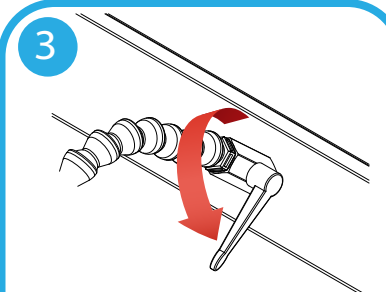
Check water levels and that faucet valve is off (system won't function properly if 6.5-gal. bucket is below 1/3 full). With faucet valve OFF (handle upward), aim spray nozzle into sink basin.

**2**



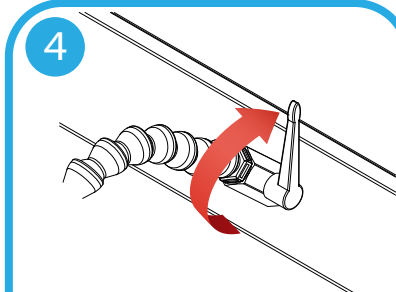
Plug GFCI power cord into 3-prong electric power outlet (observe safety cautions).

**3**



Turn the faucet valve ON (handle down) to begin the flow of water.

**4**



When finished, turn the faucet valve OFF (handle up).

**WARNING!** NEVER plug the sink basin drain and fill the basin with water to wash parts. This may cause the buckets to collapse if the pump keeps pumping. The CINK system is designed to function with continuous recirculation of water.

**Note:** Under heavy continuous use, water may become cloudy. If the system is allowed sedimentation time, finer particles will settle. You should periodically refresh the water in the system (at least once per week) after adequate sedimentation time is allowed. See Maintenance (Page 7) for instructions.

**Note:** Unplug The CINK if it will be left unattended for extended periods of time.



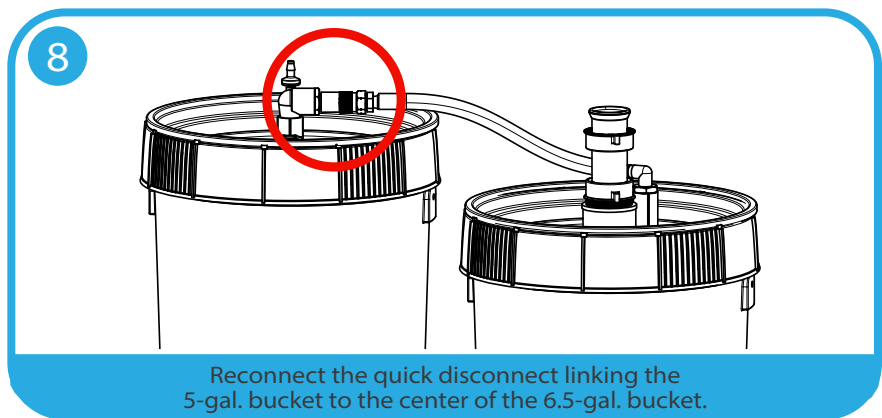
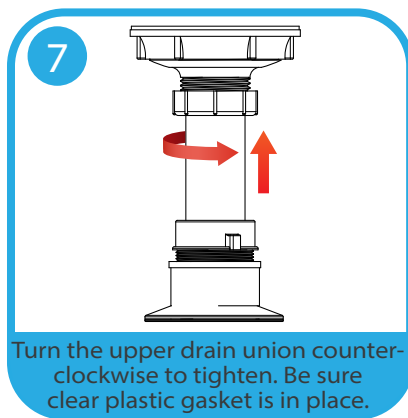
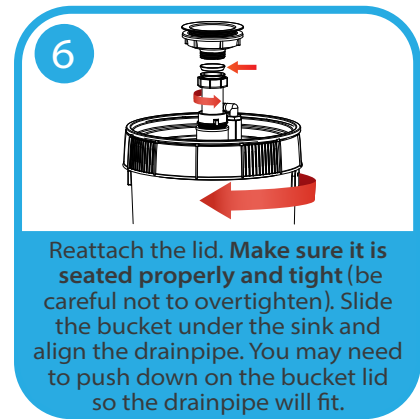
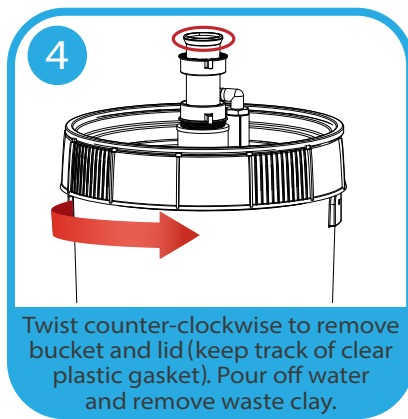
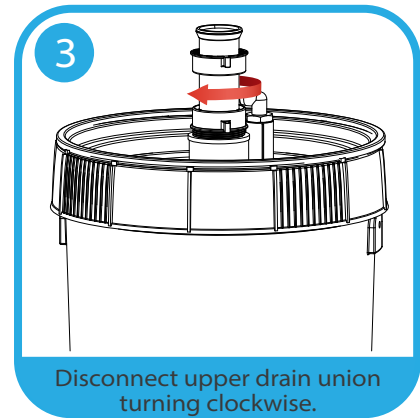
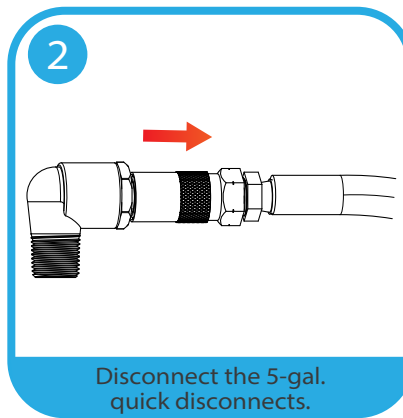
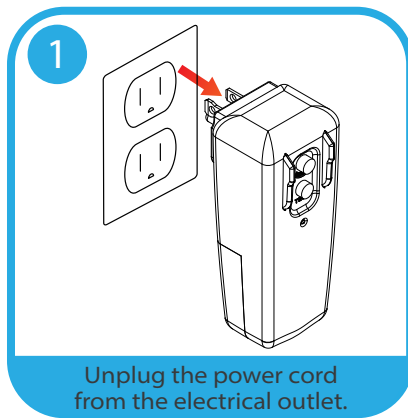
## MAINTENANCE

To maintain The CINK, you will need to empty the 5-gallon clay collection bucket, clean the filter bag and replace the string filter cartridge periodically. You may also need to winterize or prepare The CINK for periods of unused. Remember, as you perform these maintenance steps, small amounts of water may leak out from the system.

### Emptying the 5-Gallon Clay Collection Bucket

The 5-gallon bucket is intended to capture most of the clay and silt that will be put into The CINK. You will need to empty this bucket more frequently than cleaning or replacing the other two filters.

To empty the 5-gallon bucket when it has collected a significant amount of clay:

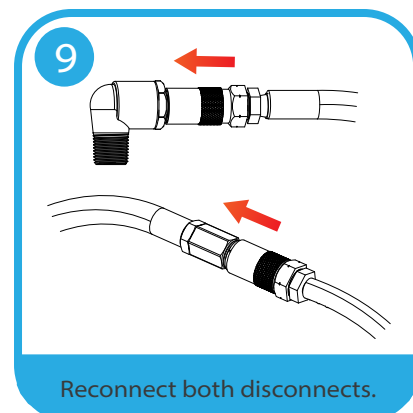
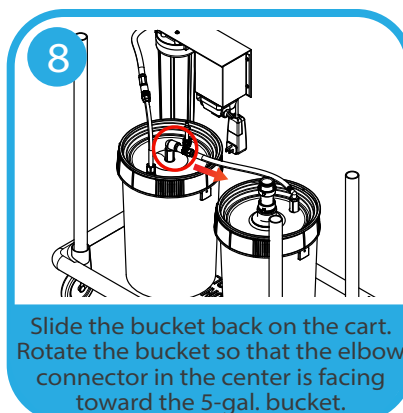
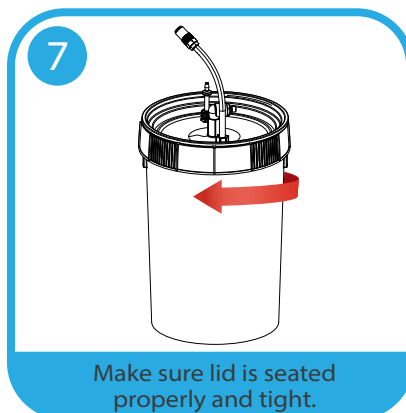
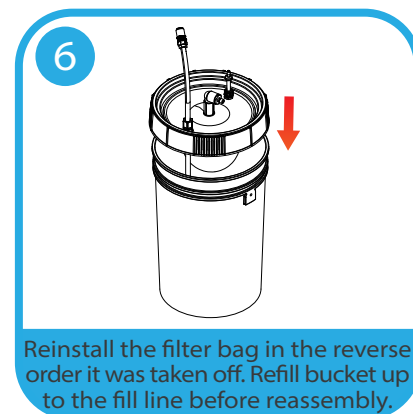
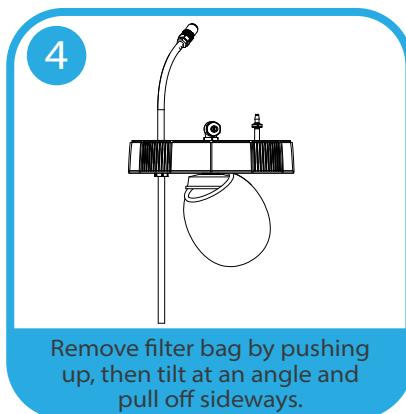
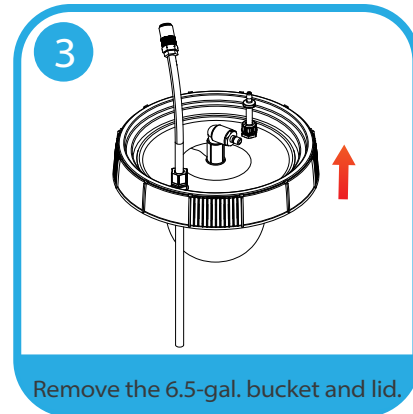
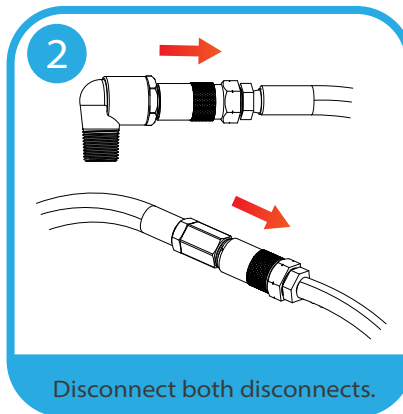
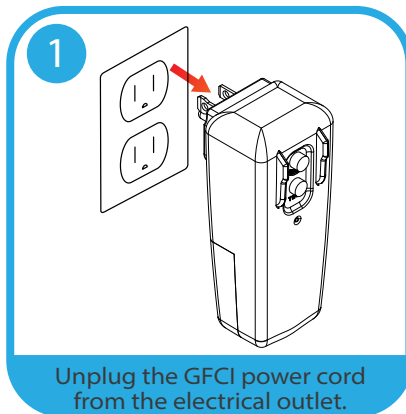




## Emptying the 6.5-Gallon Filtered Sediment Bucket and Cleaning the Filter Bag

The filter bag in the 6.5-gallon filtered sediment bucket is designed to stop particles and debris that are not settled out in the 5-gallon clay collection bucket (smaller bucket). This filter can usually be cleaned instead of replaced. The sediment level in the bottom of the 6.5-gallon bucket should not be allowed to get above 1 inch thick.

To empty the 6.5-gallon filtered sediment bucket and clean the filter bag:



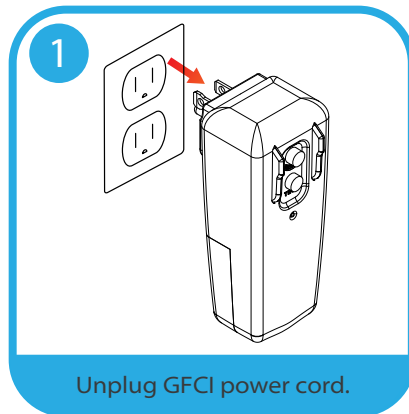




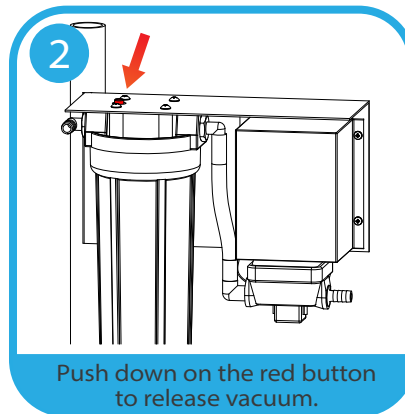
## Changing the Filter Cartridge in the Big Blue Filter

The big blue filter collects ultra-fine clay particles and should be cleaned at least every 3 months. Eventually, the pores of the filter cartridge will fill up and the water flow from the spray nozzle will decrease. At that time, please visit [www.DiamondCoreTools.com](http://www.DiamondCoreTools.com), call 619-905-9400 or email [info@diamondcoretools.com](mailto:info@diamondcoretools.com) to purchase replacement filters.

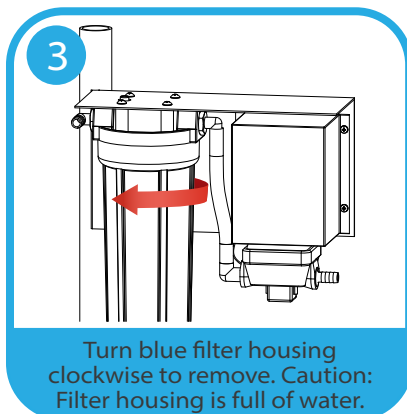
To change the filter cartridge:



Unplug GFCI power cord.



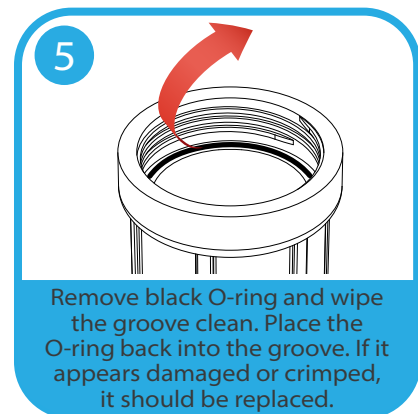
Push down on the red button to release vacuum.



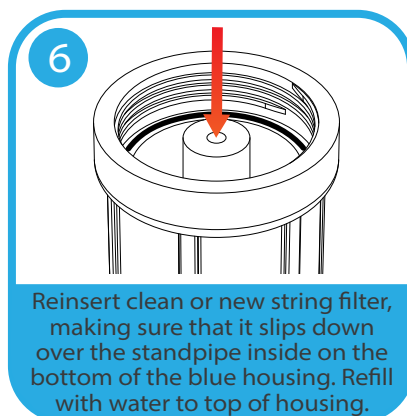
Turn blue filter housing clockwise to remove. Caution: Filter housing is full of water.



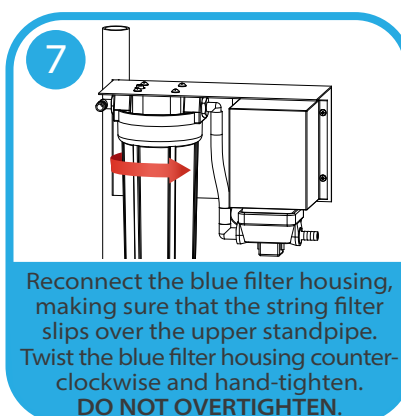
Remove and clean string filter and housing. **Do not misplace the black O-ring.**



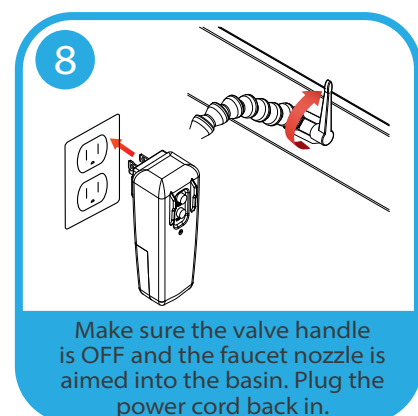
Remove black O-ring and wipe the groove clean. Place the O-ring back into the groove. If it appears damaged or crimped, it should be replaced.



Reinsert clean or new string filter, making sure that it slips down over the standpipe inside on the bottom of the blue housing. Refill with water to top of housing.



Reconnect the blue filter housing, making sure that the string filter slips over the upper standpipe. Twist the blue filter housing counter-clockwise and hand-tighten. **DO NOT OVERTIGHTEN.**

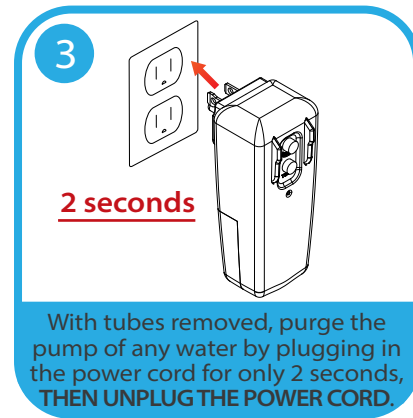
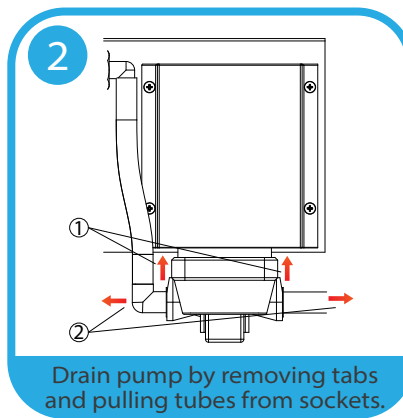


Make sure the valve handle is OFF and the faucet nozzle is aimed into the basin. Plug the power cord back in.



## Winterizing The CINK (Cold Weather or Freezing Conditions)

**CAUTION:** The CINK is NOT designed to operate or be stored with water or clay in it during freezing conditions. If freezing conditions are anticipated, remove all water and clay from the entire system. **The manufacturer is not responsible for any damage to the system, caused by the user, due to cold weather or freezing conditions.**



**Note:** After the system has had a chance to dry, be sure to plug the hose fittings back into the pump and press the blue or black lock tabs on the pump back down all the way.

## Extended Non-Use of The CINK

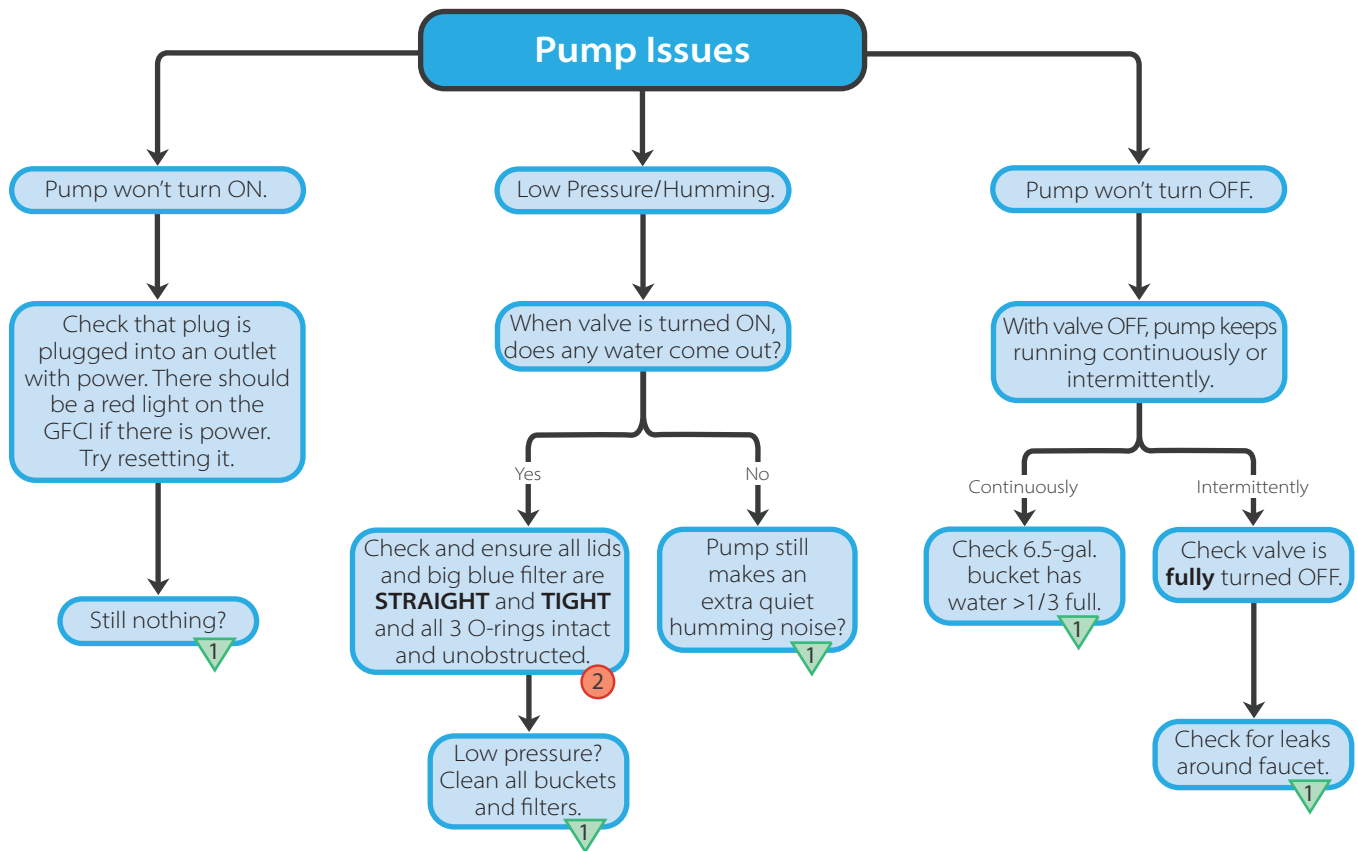
If you don't plan to use The CINK for an extended period, we recommend unplugging the unit, removing all water and clay from the system, cleaning the unit and allowing the filters to air dry. Follow instructions for Winterizing The CINK above.

## Water Cleanliness

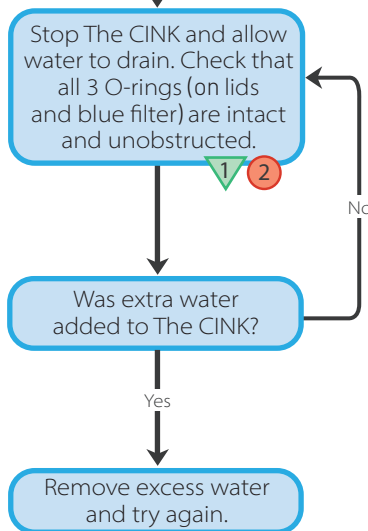
If you want to include an additive to the water to help prevent the water from smelling, you can add pool or spa chlorine or oil. Additives are also good to help prevent bacteria in the water.



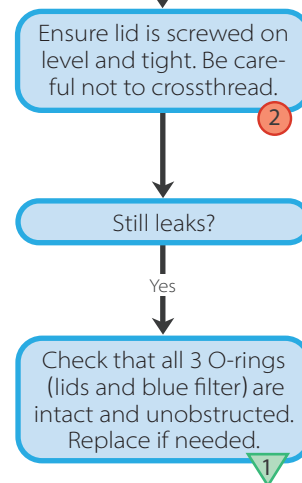
## TROUBLESHOOTING



### Basin Not Draining



### Bucket Lid Leaking



1 Still unresolved? Call us at 619-905-9400.

2 Repeat the step twice to potentially resolve the issue.



## FREQUENTLY ASKED QUESTIONS

---

**Q. Water is leaking around the bucket lids! How can I stop that?**

**A.** Check the seals on the lids for clay or obstructions and check the bucket rim for gouges, then tighten securely. Observe the alignment of threads between lid and bucket, then tighten lids more snugly, if needed.

**Q. Why is water leaking around the union or other fittings?**

**A.** The black O-ring seals or rubber gaskets may not be in the proper position. Check for clay or other obstructions. Tighten fittings more snugly. Check that quick-disconnects are locked properly.

**Q. Why is the pump continuing to run when the faucet handle is turned off?**

**A.** The pump may be pressurizing the system or removing air bubbles. Allow the pump to run up to 2 minutes to shut off automatically. If the pump continues to run indefinitely, unplug the power cord and check for leaks.

**Q. Why won't clay won't go down the drain?**

**A.** Check to make sure that the 5-gallon bucket is not too full of clay. Also, check for obstructions in the sink basin drain.

**Q. The pump shuts off while in use. Why is it doing that?**

**A.** First, check to make sure the power cord is plugged in then make sure the electrical outlet has electricity (you may need to check a breaker/fuse/surge protector). Next, press in the white circuit breaker button on the back side of the pump mounting plate.

The pump motor has a thermal overload protection device, and, in the unlikely event that it overheats, the pump will shut off automatically. Unplug the power cord to the pump and allow it to cool (may take up to 1 hour).

**Q. The 6.5-gallon bucket has collapsed while the pump was running. Why?**

**A.** Replace or thoroughly clean the bag filter.

**Q. What do I do if the pump continues to run but no water comes out the nozzle?**

**A.** The pump may be pressurizing the system or removing air bubbles. Allow the pump to run up to 2 minutes to shut off automatically. If pump continues to run indefinitely, unplug the power cord and check for leaks.

**Q. Water just stays in the sink basin. Help!**

**A.** First allow enough time for water to drain by gravity into the buckets (this may take up to 10 minutes). Then check to see if there is an obstruction in the drainpipe or tubing. There could also be too much clay in the 5-gallon bucket. If both buckets are full because of excess water in the system, collect filtered water out of the spray nozzle and discard it.

**Q. Why isn't the pump turning on when the faucet handle is in the ON position?**

**A.** Make sure the power cord is plugged in and the red GFI reset button is depressed on the power cord plug. Check that your electrical outlet has electricity (you may need to check a breaker/fuse/surge protector). Press the white reset circuit breaker button on the back side of the pump mounting plate.

**Q. Why is there decreased water flow from the nozzle?**

**A.** Allow water to drain out of the sink basin for about 10 minutes. Make sure that the 6-gallon bucket is at least 3/4 full of water and has no more than 1 inch of clay sediment, and that the 5-gallon bucket is full of water. Look for obstructions in the tubing from the 5-gallon bucket to the 6-gallon bucket. Lastly, you may need to either clean the filter bag in the 6-gallon bucket or replace the filter cartridge in the Big Blue Filter.

**Q. Water fills up the sink basin rapidly. What's causing that?**

**A.** Check that all connections are tight on all fittings and that all lids are tight. You may also need to check for leaks and overall water volume. Make sure that the valve on the smallest tube of the 6-gallon bucket is working.

**Q. Why is water coming out of the faucet cloudy and/or smelly?**

**A.** Under heavy use, water may become cloudy. The filtration system filters out particles 1 micron or larger, however, depending on the clay type, particles can be smaller than one micron. If the system is allowed time for sedimentation, the finer particles should settle out eventually. We recommended to periodically refresh the water in the system (at least once per week) after adequate sedimentation time is allowed.



## PARTS & ACCESSORIES

- The CINK Replacement String Filter (CINK SF): \$29
- The CINK Replacement Bag Filter (CINK BF): \$19
- The CINK Replacement Blue String Filter Canister: \$95
- The CINK Replacement Bucket O-Ring (2-pack): \$11.50
- The CINK Replacement Pump Kit: \$319

### For Replacement Parts:

#### DiamondCore® Tools

380 Vernon Way, Suite J  
El Cajon, CA 92020

**Phone:** 619-905-9400

**Email:** info@diamondcoretools.com

**Website:** www.diamondcoretools.com



## WARRANTY COVERAGE

DiamondCore® Tools warrants this product to be free from defects in materials and workmanship under normal use and service that would affect its operation for a period of 90 days from the date of purchase.

This warranty does not apply to:

- damage caused by accident, abuse, mishandling, dropping or tipping over
- units which have been subject to unauthorized repair
- units not used in accordance with directions
- damage exceeding the cost of the product
- damage by flood, lightning or natural disaster, or war declared or undeclared.

In no case shall the company be liable for any incidental or consequential damages for breach of this or any other warranty, express or implied whatsoever. The limit of this warranty includes the product only and not any loss of work time or contract due to inability to use this product.

**Order #**

---

**CINK Serial #**

---



Changing the World of **Ceramic Arts**  
**Glass Arts**  
**Lapidary Arts**  
**Wax Arts**  
**And More**