

INTENSE

INTENSE

INTENSE

INTENSE

INTENSE

2022 //
SNIPER XC FRO

MANUAL

Register your bike at:
www.intensecycles.com/pages/registerbike



SCAN ME

For Technical assistance:
 Email info@intensecycles.com
 Phone +1 951-307-9211

THE INTENSE SNIPER XC FRO

Whether you're racing cross-country at an elite level against the world's best, taking on XC epics, or just hammering around your local XC loop, the Sniper XC FRO (For Race Only) is for you. With the Sniper XC FRO, we have created a top tier full-suspension XC bike that is true to the INTENSE spirit.

#PURESPEEDMACHINE

CONTENTS

6	Components	30	Cable Routing
8	Setup guide	32	Front suspension setup
	<i>10 Remove wheels and prepare bike</i>	34	Rear suspension setup
	<i>12 Install handlebars</i>	36	Final bike check
	<i>14 Install rear derailleur</i>	38	Geometry Chart
	<i>18 Install rear wheel</i>	39	Maintenance Schedule
	<i>22 Install front wheel</i>	40	Carbon care
	<i>24 Install pedals and run through gears</i>	42	Parts Listing
	<i>26 Adjust headset and handlebars</i>	44	Parts Kit
	<i>28 Adjust saddle height, install bottle cage and check tire pressure</i>	47	Torque Specifications

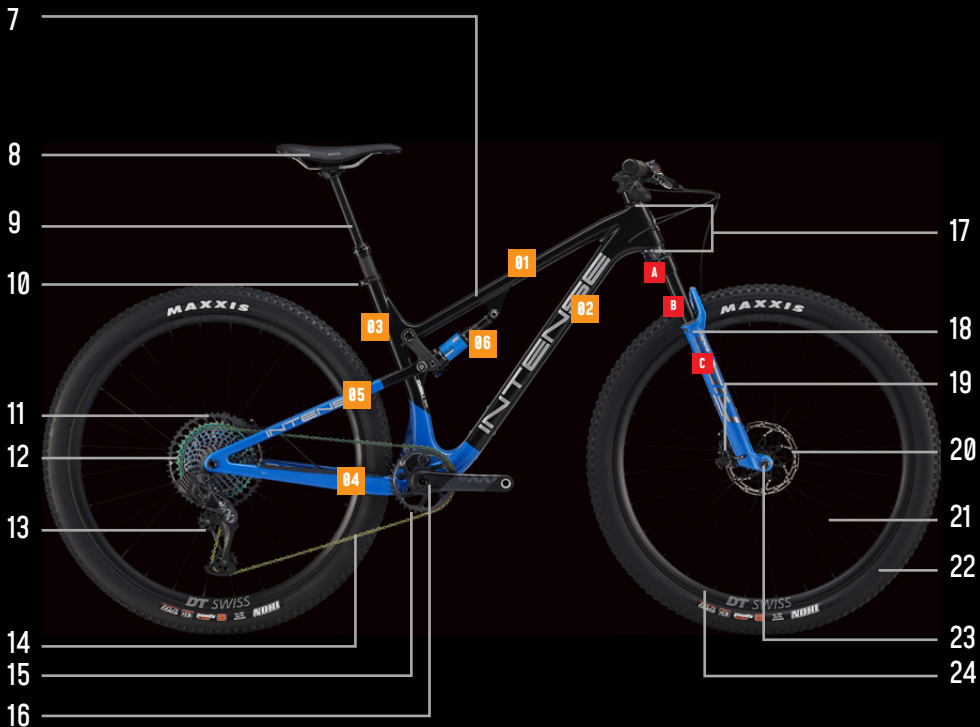


SETUP GUIDE

AT INTENSE WE HAVE ONE GOAL - TO PROVIDE THE RIDE OF YOUR LIFE

Our team of designers, engineers and product experts are focused on one thing every day: your experience on the bike. We build bikes that are as thrilling to look at as they are to ride, and we build them for the select few of you who understand the difference and refuse to settle for anything else.

From the early days of INTENSE, when founder Jeff Steber worked alone in his garage, to today with our crew of talented people working in our Temecula, CA headquarters, INTENSE has been a brand built on passion by forward thinkers who love nothing more than to throw a leg over a sweet bike and head out for a rip. We're so glad you've joined us. Welcome to INTENSE, enjoy your experience.



KNOW YOUR SNIPER XC FRO

COMPONENT BREAKDOWN

- 1 Grips**
- 2 Shifter**
- 3 Handlebars**
- 4 Stem**
- 5 Dropper post lever**
- 6 Brake lever**
- 7 Frame**
 - 01 Toptube
 - 02 Downtube
 - 03 Seattube
 - 04 Chainstay
 - 05 Seatstay
 - 06 Rear shock
- 8 Saddle (seat)**
- 9 Dropper seatpost**
- 10 Seatpost clamp**
- 11 Rear brake**
- 12 Cassette**
- 13 Rear derailleur**
- 14 Chain**
- 15 Chainring**
- 16 Crankset**
- 17 Headset**
- 18 Suspension Fork**
 - A Fork crown
 - B Stanchion
 - C Lower leg
- 19 Front brake**
- 20 Rotor**
- 21 Spoke**
- 22 Tire**
- 23 Thru axle**
- 24 Rim**

Model:	INTENSE SNIPER XC FRO 2022
Frame Travel:	100mm
Compatible Forks:	100mm
Headtube/Headset:	Integrated IS41/28.6, IS52/40
Frame Seattube Dimensions:	ID 31.6mm (ID = Inside Diameter)
Seattube Diameter:	31.6mm
Bottom Bracket:	PF92
Recommended Max Tire Size:	2.4"
Brakes:	Post Mount Direct 160mm
Minimum Rotor Size:	160mm
Maximum Rotor Size:	203mm (with adapter)
Rear Shock Eye-to-Eye:	165mm
Stroke:	40mm
Mounting Bushing Width Front:	20x8mm
Mounting Bushing Width Rear:	Trunnion



INTENSE SNIPER XC FRO **SET-UP GUIDE**

Your new INTENSE Sniper XC is almost ready to go, you just need to do a few things to get your bike ready for its first ride. If you are setting up your bike from the box, the next few pages will show you how to assemble it. If you picked up your bike already set-up by a dealer then you can jump to page 30.

We have a series of in-depth and detailed videos on our website that go through the whole process of building and preparing your bike – including technical videos on suspension set-up, tuning your gears, and much more.

GO TO [INTENSE.COM/PAGES/TECHVIDEOS](https://www.intense.com/pages/techvideos)



WE ARE HERE TO HELP!

If at any time you feel unsure about what you are doing then please contact us at INTENSE or seek the help of a professional mechanic at your local bike shop.

INTENSE +1 951.307.9211



STEP 1

REMOVE WHEELS & PUT BIKE IN STAND

When you first open your bike box you will find a Quick Start Guide, accessory box and the bike itself. First, carefully remove the wheels and put to one side **(A)**.

While the bike is still in the box, take off the packaging around the handlebars and expose the dropper post lever on the left-hand side of the handlebar. Push dropper post lever. This will raise the dropper post to its highest position, which will allow you to put the bike safely in a bike stand. Pull the bike out and place in the bike stand. Only use the seatpost to clamp the bike to the stand **(B)**.



STEP 2

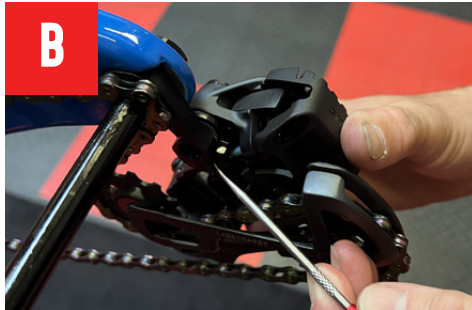
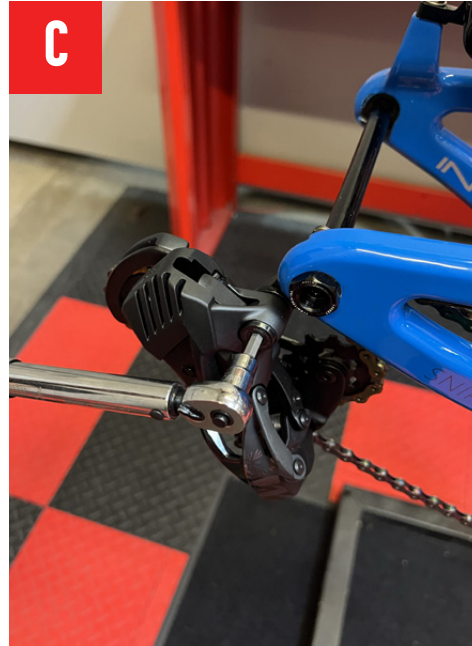
**INSTALL
HANDLEBARS**

Remove any packaging on the front of the bike, then spin the handlebar stem 180° so that the stem and forks are facing forward (A). Make sure that the forks are the correct way around – the front brake caliper should be on the left (non-drive) side of the bike, with the fork arch facing forward.

Using a 4mm Allen key remove the faceplate of the stem and put the handlebars in place (B). Use the guidelines printed on the handlebars to help position them centrally and evenly. Check that the brake, gear and dropper post cables have a nice flow and are not kinked or twisted in any way.

Replace the faceplate of the stem and reinsert the bolts, firstly by hand (C) and then with the 4mm Allen key. Gradually tighten the bolts, making sure that the bars are still positioned correctly and that the space between the faceplate and the main body of the stem is even all the way around.

When tightening the bolts follow this pattern to ensure even clamping: top left, bottom right, bottom left, top right. Finish off using the torque wrench to 5Nm.



STEP 3

INSTALL SRAM AXS REAR DERAILLEUR

Move to the rear of the bike and cut off any zip-ties or packaging from the rear derailleur and chain. Using a 5mm Allen key, screw the derailleur into the derailleur hanger/frame (A).

At this point be careful that the 'B screw' is positioned correctly so that it sits on the flat notch on the hanger (B). With the torque wrench tighten the main derailleur bolt to 8-9Nm (C).

Holding the bottom of the derailleur cage pivot the whole derailleur toward the front of the bike (D). There will be some resistance from the spring, so be careful that it doesn't spring back into position.

When it won't go any further forward, and in a near vertical position, press the small button (E) with a padlock logo printed on it. This is the 'Cage Lock'. Gently release the derailleur cage. The derailleur should now be locked in position, which will make it easier for you to fit the rear wheel.





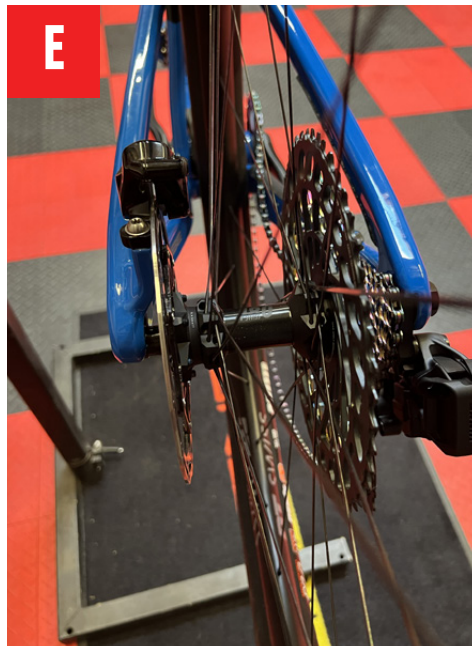
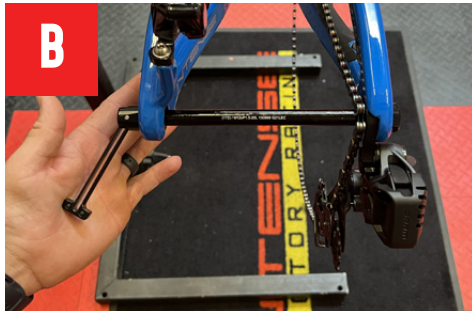
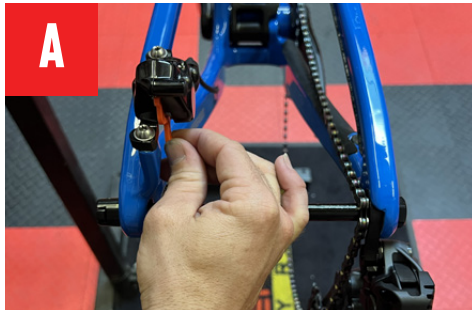
STEP 3

INSTALL SRAM AXS REAR DERAILLEUR ...

Before you install the rear wheel you should fit the battery to the SRAM AXS wireless rear derailleur. You will find the battery and charger for your derailleur in the SRAM AXS box that came with your bike. The battery is supplied with less than 20% charge, and will need to be fully charged before you go on your first ride.

To install the battery into the rear derailleur unclip the black plastic battery cover (**F+G**) and remove the battery block and cover that protects the terminals (keep them in a safe place for future use).

Install the battery so that the tab slots into the hole on the lower part of the battery housing (**H**), then click it into place (**I**). With the battery securely positioned clip the battery protector back over the battery (**J**).



STEP 4

**INSTALL
REAR WHEEL**

Take out the rear brake pad spacer **(A)** – this is usually orange, red or yellow plastic. Once removed be careful not to squeeze the brake lever until the rear wheel is in position. The rear axle features an integrated pull-out lever that sits inside the axle body. Simply pull this out, unscrew and remove the rear axle **(B)**.

Remove any packaging left on the rear wheel, including the large black plastic rotor guards **(C)**. Be careful that the metal wheel spacers don't get pulled off by accident. If they do just press them back into position. Do not touch the brake rotors with your hands or gloves, as any small amount of grease may contaminate them.

Position the chain on the smallest cog of the cassette **(D)**. The derailleur will already be in its 'locked' position making it easier for you to install the wheel. Since it is only one model in this manual. Carefully line up the rotor with the rear brake making sure that it slides inside the caliper body between the brake pads **(E)**, and the hub spacers slide into the slots on the frame dropouts.





F

STEP 4 CONTINUED...

Once everything is lined up and in position, reinsert the axle and tighten using the integrated lever on the non-drive side (left), turning clockwise until tight **(F)**. Reinstall the lever within the axle by pushing it firmly back in place. Then with a 5mm Allen key on the drive side of the bike tighten the axle to 11Nm **(G)**.

You can now take the lock off your SRAM rear derailleur **(H)**. To do this, gently push the derailleur cage forward a little, the cage lock will automatically release, slowly let the derailleur arm move backward into position.



G



H



STEP 5

**INSTALL
FRONT WHEEL**

Remove all packaging from the wheel (make sure the hub end caps are still in the correct place). Then remove the brake pad spacer (usually orange, yellow or red) and the front wheel axle from the fork (**A&B**).

Position the wheel so that the rotor fits into the brake caliper body and that the hub body slots into the grooves on the fork (**C**). When everything is in the correct place reinsert the front wheel axle and tighten to 9-13.5Nm (**D**).



A



B

STEP 6

INSTALL PEDALS

(A) Pedals are somewhat of a personal choice – some people prefer flat pedals, others clipless, and then of course there are all the different brands and designs. So please take note, your bike does not come supplied with pedals, so that you can choose your own.

Note: Bicycles have specific left and right pedals and the left-hand side pedal has an opposite thread on it, meaning that it tightens counterclockwise.

STEP 7

WIRELESS GEARING SET UP

The Sniper XC FRO comes supplied with SRAM's AXS wireless shifter and rear derailleur. You need to link the shifter and derailleur so that they are 'talking' to each other. Press and hold the button on the derailleur until it starts blinking, then release the button. Your rear derailleur is now in pairing mode. Press and hold the button on the shifter/controller until it flashes rapidly a few times, then release. Go back to the derailleur and press the button once and release. The pairing process is now complete. Check that the gears are shifting correctly by turning the cranks and shifting through the gears. (B)

SRAM's AXS App is a great tool that lets you view your shifting data, battery charge level, etc., and it also allows you to customize your controllers and their shifting functions. If you are having any issues with your gears or for more information please visit the SRAM website sram.com



STEP 8

**ADJUST HEADSET
& HANDLEBARS**

Your bike's headset comes 'pre-loaded' from our factory but it is good practice to check it. If it feels a little loose then undo the stem clamping bolts slightly using a 4mm Allen key (A) and then gently tighten the top cap bolt by a quarter clockwise turn (B). Retighten the stem clamp bolts and check the headset again. If the bars won't turn smoothly, it is too tight, so repeat the process but this time slacken the top cap bolt off a little, or if it is too loose, continue to tighten.

Once you are happy with your headset adjustment you need to make sure that your stem and handlebars are straight. A good tip is to take your bike out of the stand and straddle it, then look down and line the back of your handlebars up with the front of the fork legs (C). Take your time to get it right, and when you are happy tighten the two stem bolts to 5-7Nm using a 4mm Allen key (D).



STEP 9

ADJUST SADDLE HEIGHT

Set the height of your saddle (seat) with your seatpost in its fully extended position. Using a 4mm Allen key loosen the seatpost clamp and adjust the seatpost to the correct height. A good base measurement is to stand next to your bike in your riding shoes, putting your hand against the top of your hip bone (A). The palm of your hand should be level with the top of the saddle. Adjust as appropriate, then tighten the seat clamp to 4Nm. Do not over tighten this bolt as it may affect the performance of the seatpost. Note: You may have to slightly readjust the saddle height once you have set up your suspension correctly.

STEP 10

INSTALL BOTTLE CAGE

Your bike comes supplied with a water bottle cage. Undo the two 3mm bolts on the downtube of your bike and fit the cage (B&C). Tighten to 3Nm.

STEP 11

CHECK TIRE PRESSURE

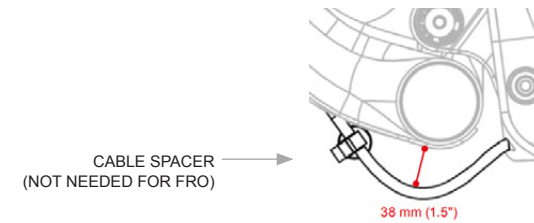
The ideal tire pressure setting is determined by four main factors: rider weight, type of terrain, design/construction of tire and the desired balance of comfort and traction. The pressures here are a suggested starting point and can typically range +/- 5psi. Front: 26psi, Rear 29psi. It is always a good idea to inspect your tires for tears and punctures before and after every ride.



IMPORTANT NOTE:

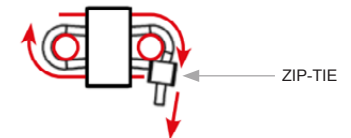
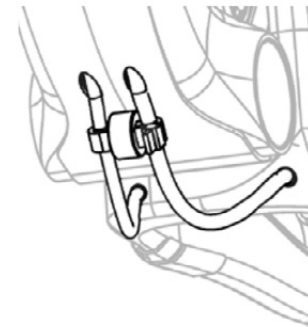
SNIPER XC FRO REAR BRAKE ROUTING

It is important to position the rear brake hose 38mm (1.5") away from the bottom surface of the downtube. This allows slack in the hose so that it doesn't come under tension when the suspension compresses.



CABLE ROUTING FOR NON-WIRELESS SETUP

1. Feed the zip-tie into the cable spacer and around one of the cables before feeding it back through the spacer and around the second cable. Do not tighten.
2. Adjust the proper amount of slack in the cables.
3. Position the cable spacer near the exit holes on the downtube.
4. Tighten the zip-tie to secure the spacer into place as shown.

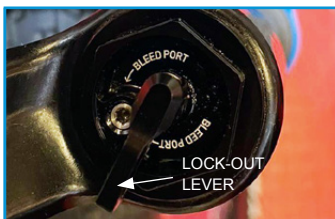


STEP 12
FRONT SUSPENSION SETUP SNIPER XC FRO

The Sniper XC FRO uses RockShox air sprung suspension front and rear. Use the chart below to calculate the air pressure you require. Remember to calculate your weight when you are in full riding gear. You are looking for approximately 20% sag, so for the 100mm (3.9") fork that comes on the Sniper XC FRO that measurement should be around 20mm (.79"). Adjust the pressure in your forks until you reach the correct sag. You will notice RockShox utilizes an easy to read scale on the fork leg.

FORK: ROCK SHOCK SID SL ULTIMATE 100MM
SUGGESTED STARTING POINTS FOR SETTING UP YOUR FORK

RIDER WEIGHT (LBS/KGS)	AIR PRESSURE (PSI)	REBOUND DIAL NO. OF CLICKS
120-130 / 54-59	70	18
130-140 / 59-64	80	17
140-150 / 64-68	90	16
150-160 / 68-73	98	16
160-170 / 73-77	105	15
170-180 / 77-82	113	15
180-190 / 82-86	120	13
190-200 / 86-91	127	12
200-210 / 91-95	135	10
210-220 / 95-100	140	9
220-230 / 100-104	150	8
230-240 / 104-109	157	7
240-250 / 109-113	167	6
250-260 / 109-113	180	5



ADJUSTING COMPRESSION DAMPING

The compression adjuster is located on the top of the right fork leg. This black compression knob is actually the fork lockout. It's either open or in the lock position. Note that the lockout is firm, however, it will allow blow-by on bigger hits.



REBOUND

Open
 (counterclockwise)
 Least amount of rebound damping. Fork rebounds fastest.

Closed
 (clockwise)
 Most amount of rebound damping. Fork rebounds slowest.

The rebound adjuster for the fork is a red dial. It is located on the bottom of the right fork leg. Rebound controls how fast the fork extends after compressing. The rebound adjustment is dependent on the air pressure setting. For example, higher air pressure require more rebound damping. Use your air pressure to find your rebound setting. Turn your rebound knob to the closed position (fully clockwise) until it stops. Then back it out (counterclockwise) to the number of clicks shown in the table opposite.

Adjust rebound until (when tested) the fork returns quickly but does not top out. Top out is felt when a fork fully extends too quickly and comes to an abrupt stop when it reaches full extension (you will hear a small noise). Top out should be avoided through proper rebound setting.

REBOUND DIAL

STEP 13

REAR SUSPENSION SETUP

Use the chart below to calculate the air pressure required for your weight. Sag for the rear shock should be 30%. The measurement should be approximately 12mm (0.47") between the red O-ring and the shock body. You will notice RockShox utilizes an easy to read scale on the shock body.

SHOCK: ROCK SHOX SID LUXE ULTIMATE RL 165MM X 40MM SUGGESTED STARTING POINTS FOR SETTING UP YOUR SHOCK

RIDER WEIGHT (LBS/KGS)	AIR PRESSURE (PSI)	REBOUND (CLICKS OUT FROM FULLY CLOSED)
120-130 / 54-59	130	9
130-140 / 59-64	140	8
140-150 / 64-68	160	6
150-160 / 68-73	180	6
160-170 / 73-77	200	5
170-180 / 77-82	220	5
180-190 / 82-86	240	4
190-200 / 86-91	260	4
200-210 / 91-95	280	3
210-220 / 95-100	300	3
220-230 / 100-104	320	2
230-240 / 104-109	325	1



COMPRESSION ADJUSTMENTS

The compression adjuster is located on the bottom of the shock (mounted on the bike). The compression adjuster (lockout) is a two position switch. Pointing forward is open, pointing backward is locked.

THE REBOUND DIAL (3MM ALLEN SCREW) IS LOCATED UNDERNEATH THE LOCK-OUT LEVER. SEE BELOW.



REBOUND

Open
(counterclockwise)
Least amount of rebound damping. The shock rebounds fastest.

Closed
(clockwise)
Most amount of rebound damping. The shock rebounds slowest.



Proper set up and tuning can vary from shock to shock. Please consult the RockShox manual included with your bike for complete information about set up, tuning and general maintenance or visit rockshox.com



STEP 14

FINAL CHECK

You are almost ready to go riding. Now is a good time to check over your bike to make sure that everything looks correct – all packaging is removed, bolts are all tightened to the correct torques, etc. Most importantly you need to check that both the front and rear brakes are working properly. After your first ride check over your bike again, making sure that all bolts are secure. After that follow the Maintenance Schedule on page 37.

As you get to know your bike you may want to make some small personal adjustments – rolling your bars forward or backward a little, position your brake levers at a slightly different angle, adjust your suspension, experiment with tire pressure or slide your saddle backward or forward. This is all perfectly normal, just making small tweaks here and there to really personalize your bike so that it is right for you.

COMPONENT SPEC NOTE

The Sniper XC is designed around the use of a single chain ring only. Use of a double or triple ringset will not allow proper clearance of the frame.

WARNING

Not intended for use with forks larger than 120mm of travel.

SNIPER XC FRO
GEOMETRY CHARTS

SNIPER XC // SIZE LARGE SHOWN



SIZE	SMALL	MEDIUM	LARGE	EXTRA LARGE
WHEELBASE	1127MM / 44.4"	1153MM / 45.37"	1180MM / 46.4"	1206MM / 47.5"
TOPTUBE LENGTH	584MM / 23.0"	610MM / 24.0"	636MM / 25"	661MM / 26"
CHAIN STAY LENGTH	439MM / 17.3"	439MM / 17.3"	439MM / 17.3"	439MM / 17.3"
HEADTUBE LENGTH	90MM / 3.54"	95MM / 3.7"	105MM / 4.13"	115MM / 4.5"
HEADTUBE ANGLE	67.4°	67.4°	67.4°	67.4°
REACH	419MM / 16.6"	443MM / 17.5"	466MM / 18.4"	489MM / 19.3"
STACK	571MM / 22.45"	576MM / 22.6"	585MM / 23"	594MM / 23.4"
BB HEIGHT	332MM / 13.0"	332MM / 13.0"	332MM / 13.0"	332MM / 13.0"
BB DROP	37MM / 1.50"	37MM / 1.50"	37MM / 1.50"	37MM / 1.50"
SEATTUBE ANGLE (EFFECTIVE)	73.9°	73.9°	73.9°	73.9°
SEATTUBE LENGTH	406MM / 16"	437MM / 17.2"	488MM / 19.2"	538MM / 21.2"
STANDOVER HEIGHT	769MM / 30.3"	771MM / 30.4"	776MM / 30.5"	781MM / 30.75"
FORK AXLE TO CROWN	503.7MM / 19.8"	503.7MM / 19.8"	503.7MM / 19.8"	503.7MM / 19.8"
FORK OFFSET	44MM / 1.73"	44MM / 1.73"	44MM / 1.73"	44MM / 1.73"
FRONT CENTER	689MM / 27.1"	715MM / 28.1"	742MM / 29.2"	768MM / 30.2"

GEOMETRY TAKEN WITH SID FORK AT TOP OUT WITH 506MM AXLE TO CROWN LENGTH AND 44MM FORK OFFSET

BIKE CARE
MAINTENANCE SCHEDULE

You have purchased a high-performance bicycle which requires a certain level of service and maintenance to sustain the level of performance your frame was designed around. Proper care will also ensure the bike is safe to ride at all levels. It is important to read and understand the carbon care information as well as follow the maintenance schedule and inspect your bicycle before each ride. These will not only help to limit or avoid costly repairs but will also help to avoid injury due to service neglect and component failure.

	ACTION	EVERY RIDE	500 MILES OR 1 MTH	2000 MILES OR 6 MTHS	4000 MILES OR 1 YR
TIRES	CHECK AIR PRESSURE, INSPECT TREAD AND SIDEWALLS FOR TEARS AND PUNCTURES	X			
CHAIN	BRUSH OFF AND LUBRICATE	X			
BRAKES	SQUEEZE BRAKES AND CONFIRM FUNCTION	X			
GENERAL	CLEAN COMPLETE BIKE OF MUD AND DEBRIS	X			
HEADSET	CHECK ADJUSTMENT		X		
BOX LINK	ADD GREASE THRU ZERK FITTINGS		X		
FRAME PIVOTS	CHECK TORQUES		X		
SPOKES	INSPECT FOR DAMAGE, CHECK TENSION		X		
SHOCK & FORK	CHECK AIR PRESSURE, INSPECT FOR LEAKS		X		
DERAILLEUR	CABLES INSPECT AND LUBE			X	
SEATPOST	CLEAN AND REGREASE INTERFACE WITH FRAME			X	
FRAME PIVOTS	REMOVE PIVOT BOLTS, CHECK BEARINGS FOR PITTING AND WEAR			X	
HEADSET	DISASSEMBLE STEM, HEADSET AND FORK. CHECK BEARINGS FOR PITTING AND WEAR			X	
HUBS	PULL WHEELS OFF, CHECK HUB BEARINGS FOR PITTING AND WEAR			X	
BOTTOM BRACKET (BB)	REMOVE CRANKARMS AND CHECK BB BEARINGS FOR PITTING AND WEAR			X	
BRAKES	REPLACE BRAKE PADS			X	
CHAIN	INSPECT FOR DAMAGE AND CHECK FOR STRETCHING			X	
GENERAL	COMPLETE TUNE-UP				X



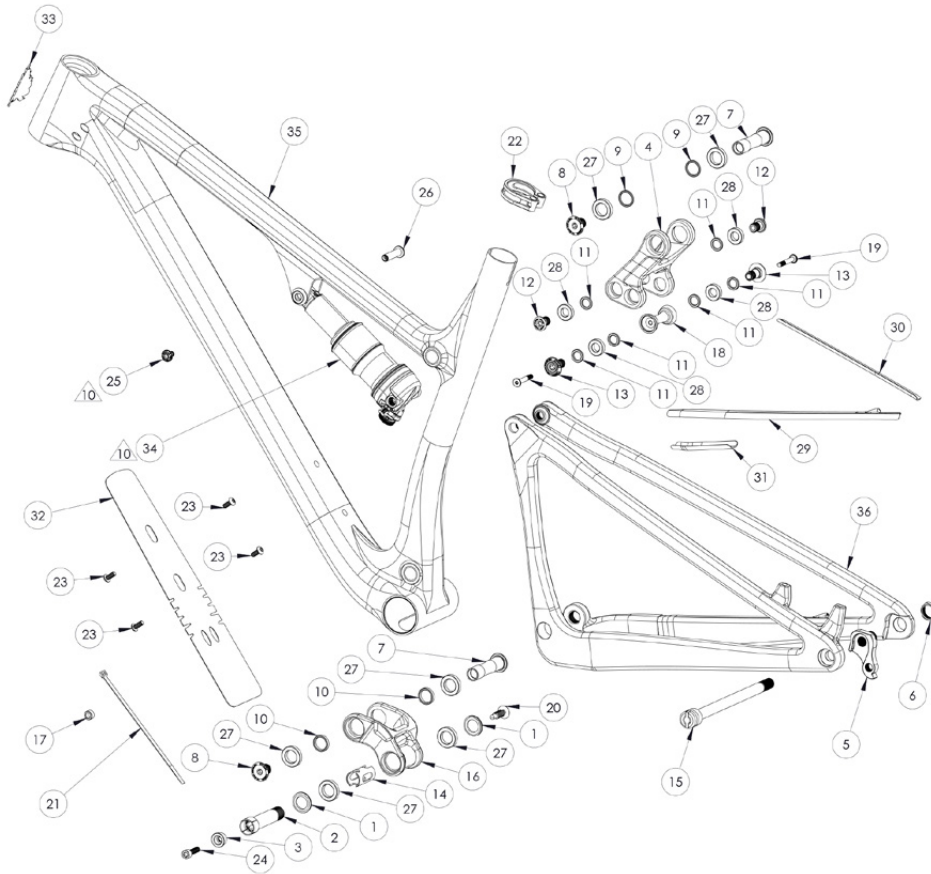
MAINTENANCE

**CARBON
CARE**

INTENSE employs advanced composite techniques and material in our frames which do require a certain level of care and maintenance to ensure a safe experience at the high level of performance each frame is designed around. Not following these guidelines will decrease the level of performance and possibly cause injury or death.

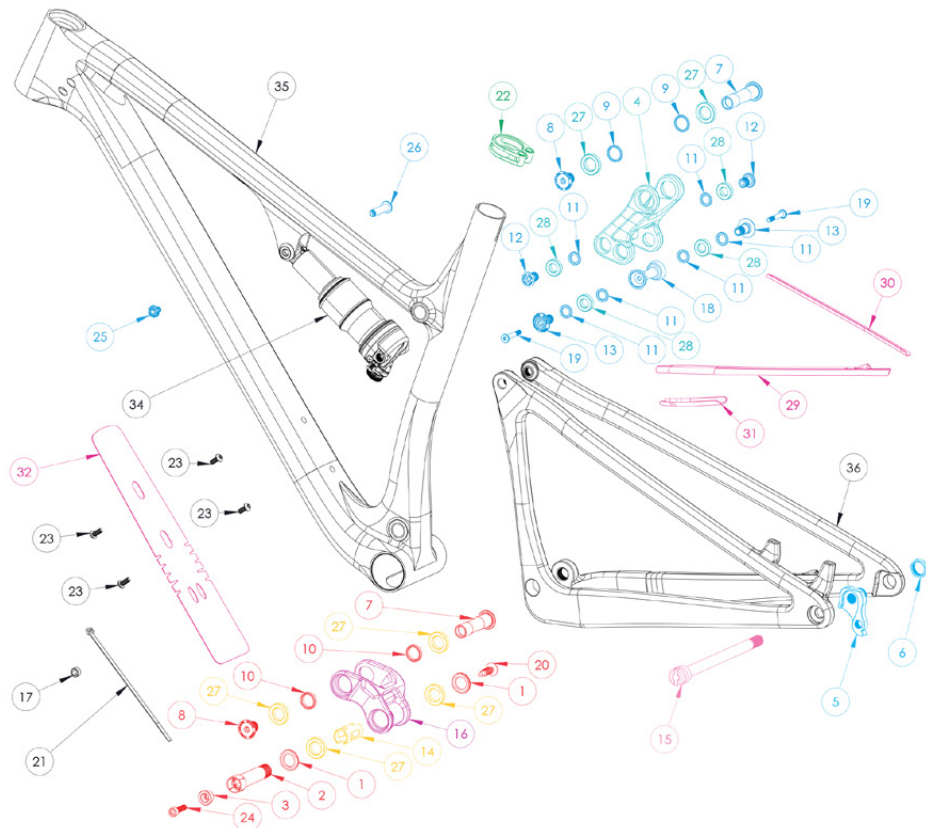
- Use a soft cloth with warm soapy water to clean the carbon surfaces. Do not use high pressure washers, abrasive cloths or cleaner.
- Be sure all frame surfaces in contact with cables are protected. Cable housing rubbing on carbon can wear over time.
- Be sure brake levers, handlebar ends and the fork crown do not contact the frame at full rotation.
- Never clamp any part of a carbon frame in a bike stand or car rack.
- Always inspect your frame if you experience any chain suck.
- Always inspect your frame in full after a crash to be sure there is no damage. Look for cracks, dents or loose fibers. If you discover damage in any degree it's best to have your frame inspected by a qualified INTENSE, LLC dealer. Any direct impact to the frame can cause serious structural damage.
- Use high-grade waterproof grease on seat post, BB and headset bearing contact areas with the carbon.
- Never ream or face a carbon frame.
- Be sure to follow all recommended torque settings.
- Use only genuine replacement parts for safety-critical components.

SNIPER XC FRO
PARTS LISTING



ITEM	PART No.	DESCRIPTION	QTY.	TORQUE SPEC.
1	130765	Bearing Cap 24mm OD Cap Bearing Blk	2	N/A
2	130791	Bolt Main Pivot Bolt Main Pivot 1.5t Expander Blk	1	7 Nm / 60 in-lbs
3	130807	Cone Adjuster Spacer Cone Adjuster Blk, 8.3mm Height	1	N/A
4	130823	Injection Top Link Link Top Sniper Injection Blk	1	N/A
5	130826	Hanger Hanger Derailleur Forged Blk Sniper	1	N/A
6	130827	RD Hanger Nut Nut Derailleur Hanger Blk Sniper	1	11 Nm / 100 in-lbs
7	130828	Axle Upper Axle Pivot Sniper	2	16 Nm / 140 in-lbs
8	130829	Bolt Shoulder Bolt Shoulder Sniper	2	16 Nm / 140 in-lbs
9	130830	Spacer Spacer Upper Axle Sniper 19mm OD 15mm ID 2.5mm	2	N/A
10	130831	Spacer Lower Link Spacer Lower Axle 19mm OD x 15mm ID x 4mm Sniper	2	N/A
11	130832	Spacer RT/Top Link Spacer Upper Axle 15mm OD x 10mm ID x 2.5mm Sniper	6	N/A
12	130833	Trunnion Bolt Bolt Shoulder Trunnion Rear Shock Sniper	2	16 Nm / 140 in-lbs
13	130834	Clevis Bolt Bolt Shoulder RT Clevis Sniper	2	16 Nm / 140 in-lbs
14	130845	Crush Tube Crush Tube SNIPERLower Link	1	N/A
15	130846	Rear Axle Axle Rear 148 x 12mm Boost Blk	1	11 Nm / 100 in-lbs
16	130854	MAG Forged Lower Link Link Lower Magnesium, Sniper	1	N/A
17	130856	Cable Spacer Cable Spacer, Lower Cable Guide, Blk	1	N/A
18	130874	Crossbrace Crossbrace M5 x 0.8 Thread Sniper Rear	1	N/A
19	130875	Low Profile M5 X 32 Low Profile Screw, M5 x 32, T25 Torx, Crossbrace Sniper	2	4 Nm / 36 in-lbs
20	140038	Push Rivet Push Rivet SR-0817BK	1	N/A
21	140053	Zip Tie Zip Tie, Lower Cable Guide	1	N/A
22	340343	Sniper Seat Clamp Sniper Seat Clamp	1	4 Nm / 35.5 in-lbs
23	410010	BHCS M5 X 12 BHCS, Button Head, M5 X 12	4	2 Nm / 18 in-lbs
24	410032	SHCS M6 x 22 SHCS, Socket Head, M6 x 22 Titanium	1	14 Nm / 125 in-lbs
25	410066	Shock Shoulder Bolt Left Shock Bolt Sniper, M6 Thread, 7075-T6	1	7 Nm / 60 in-lbs
26	410067	Shock Shoulder Bolt Right Bolt Shock 8mm OD x 31mm Long Female 7075-T6	1	7 Nm / 60 in-lbs
27	430008	Bearing 6802 Bearing 6802 LLU MAX	6	N/A
28	430011	Bearing 6800 Bearing 6800 LLU MAX	4	N/A
29	500294	Guard Flak CS Flak Guard Sniper Chainstay Top	1	N/A
30	500295	Guard Flak Ststy Flak Guard Sniper Seatstay	1	N/A
31	500296	Guard Flak CS Flak Guard Sniper Chainstay Bottom	1	N/A
32	500297	Guard Flak DT Flak Guard Sniper Downtube	1	N/A
33	500335	Head Badge Head Badge Flame Logo	1	N/A
34	-	Rear Shock Rear Shock 165 Rear Shock: 165 x 40 XC, 165 x 45 Trail	1	N/A
35	-	Front Triangle Sniper Front Triangle	1	N/A
36	-	Rear Triangle Sniper Rear Triangle	1	N/A

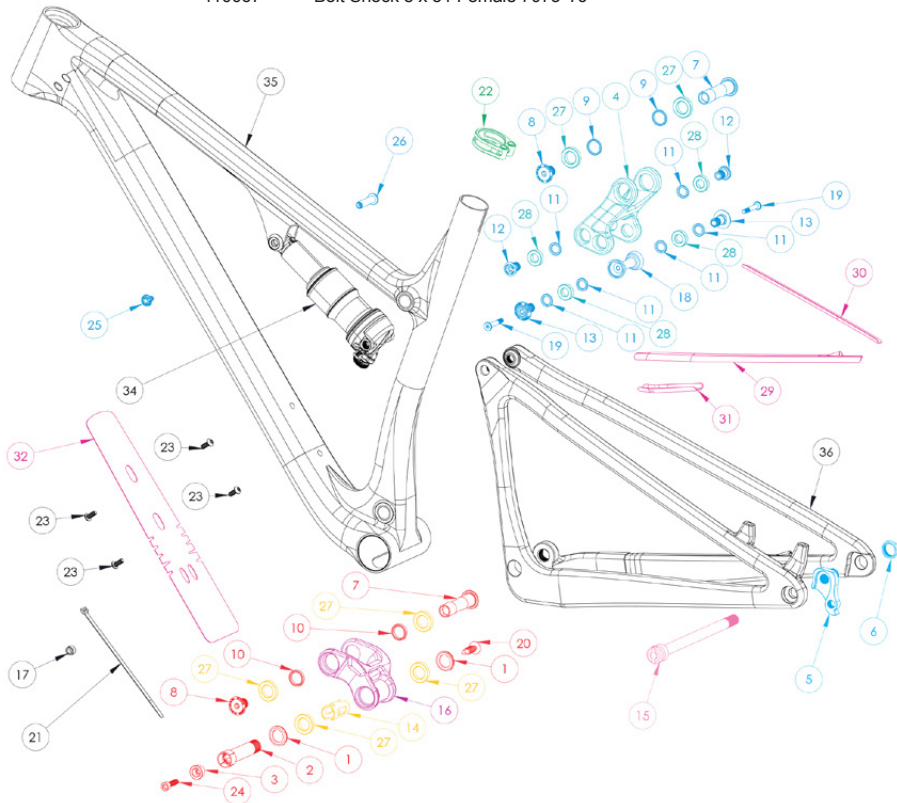
SNIPER XC FRO
PARTS KITS



AXLE KIT	IT150125	Axle Kit Rear CNC 148 x 12 Boost With Hidden Lever (updated quick release) Sniper 2019-2022
15	130899	Axle Rear 148 x 12mm Boost Blk with Hidden Lever
BEARING KIT LOWER	IT150002	Bearing Rebuild Kit Lower Sniper 2019-2022
14	130845	Crush Tube Sniper Lower Link
27	430008	Bearing 6802-2RS-MAX
CROSSBRACE	IT150036	Link Kit Upper Crossbrace Sniper 2019-2022
13	130877	Bolt Shoulder RT Clevis Sniper Blk
18	130884	Crossbrace M5 x 0.8 Sniper Rear
19	130875	SS Sniper Crossbrace Fastener Low Profile M5 x 32 T25 Torx
FLAK GUARD KIT	IT150001	Frame Protection Kit Flak Guard Sniper SM/MD Only 2019-2022
29	500294TW	Flak Guard Sniper Chainstay Top
30	500295TW	Flak Guard Sniper Seatstay
31	500296TW	Flak Guard Sniper Chainstay Bottom
32	500297-1	Flak Guard Sniper Downtube SM/MD
FLAK GUARD KIT	IT150127	Frame Protection Kit Flak Guard Sniper LG/XL Only 2019-2022
29	500294	Flak Guard Sniper Chainstay Top
30	500295	Flak Guard Sniper Seatstay
31	500296	Flak Guard Sniper Chainstay Bottom
32	500297	Flak Guard Sniper Downtube
HANGER KIT	IT340230	Derailleur Hanger Kit Sniper 2019-2022
5	130826	Hanger Derailleur Forged Blk Sniper
6	130827	Nut Derailleur Hanger Blk Sniper
HARDWARE KIT LOWER	IT150007	Link Kit Lower Hardware Stainless Sniper 2019-2022
1	130765	Cap Bearing 24mm OD S275C Blk
2	130791	Bolt Main Pivot 1.5t Expander Blk TW
3	130807	Spacer Cone Adjuster 8.3mm (Short) Blk TW
7	130828	Axle Pivot Sniper
8	130829	Bolt Shoulder Sniper
10	130831	Spacer Lower Axle 19 x OD x 15 x ID 4 Sniper
--	140038	Plug Trim 15mm YF
24	410009	Bolt SHCS M6 x 22
LINK KIT LOWER	IT340244	Link Kit Lower Complete Forged Magnesium Sniper XC FRO 2021-2022
16 (14,27)	130854 B	Link Kit Lower Forged Magnesium Sniper w/ Bearings

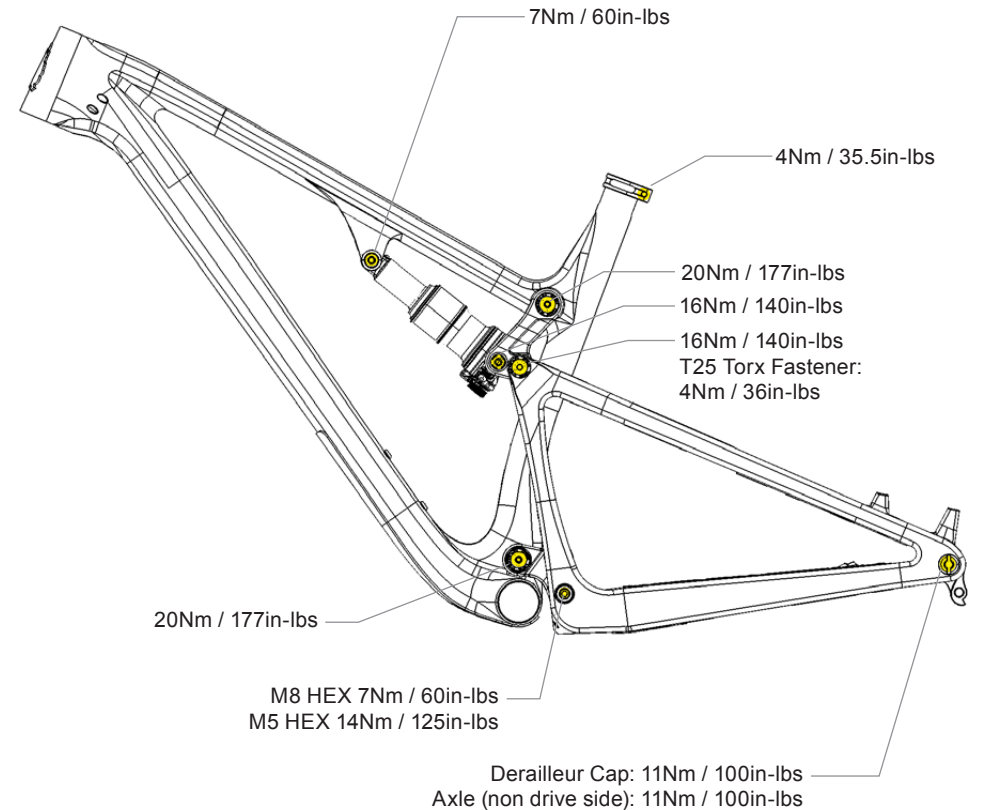
PARTS KITS CONTINUED...

LINK KIT UPPER	IT340233	Link Kit Upper Complete Carbon Sniper 2019-2022
4 (27,28)	IT340233	Link Upper Carbon Blk Sniper w/ Bearings
SEAT COLLAR	IT340343	Seat Collar Bolted 36.1 Sniper 2019-2022
22	IT340343	Seat Collar Sniper Blk
HARDWARE KIT UPPER	IT150004	Link Kit Upper Hardware Stainless Sniper 2019-2022
7	130828	Axle Pivot Sniper
8	130829	Bolt Shoulder Sniper
9	130830	Spacer Upper Axle 19 x OD x 15 x ID 2.5 Sniper
11	130832	Spacer Upper Axle 15 x OD x 10 x ID 2.5 Sniper
12	130833	Bolt Shoulder Trunnion Rear Shock Sniper
13	130877	Bolt Shoulder RT Clevis Sniper Blk
18	410066	Bolt Shock C29 M6 7075-T6
25	410067	Bolt Shock 8 x 31 Female 7075-T6



TORQUE SPECIFICATIONS

Achieving correct torque is vital to ensuring the proper performance and function of the SNIPER XC frame. Failure to do so could result in suboptimal performance of your frame as well as premature wear and tear of individual parts. In addition to this chart, torque values are laser etched onto corresponding hardware for your reference.



INTENSE

2022 //
SNIPER XC FRO
MANUAL