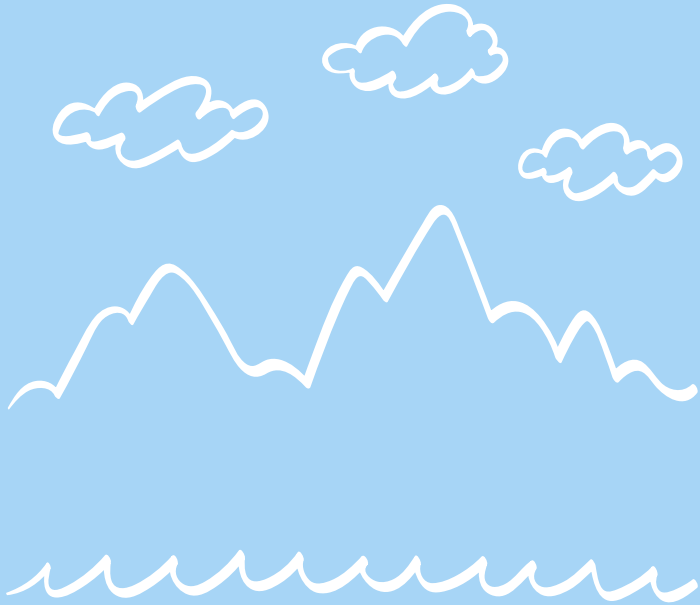


Coaster

INFLATABLE KAYAK USER'S MANUAL

1 PERSON



retrospec

Congratulations on the purchase of your Coaster inflatable kayak.

Please read this manual carefully before inflating, assembling, and using your kayak.

For your full enjoyment, it is important to follow proper safety procedures and the rules of the waterway which apply to all boats (non-motor and motorized). Always check the local weather conditions before taking the kayak out. Do not let yourself get caught out by currents in tidal inlets, open seas, small channels, or shallow water regions.

All maintenance work and repairs should be done only by qualified professionals.

IMPORTANT: Keep this manual in a dry bag/box in your boat. If you gift, give-away, or sell your kayak, make sure to give this manual to the new owner and remind them it is important to read and know its contents.

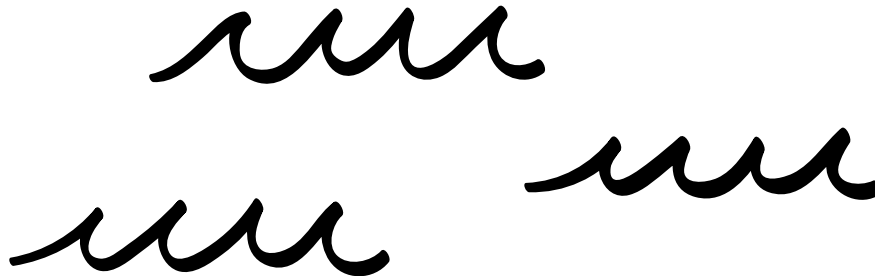
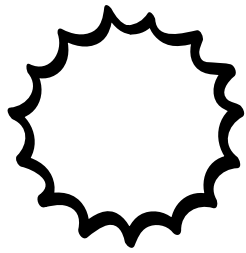


Table of Contents

Important Parts of Your Kayak	3
Warnings	4-6
What's in the Box - and not?	7
Inflation	8-9
Seat Installation	10
Operating Instructions	10-11
Deflations, Maintenance and Storage	11
Repairs	12
Warranty	13


Important Parts of Your Kayak

If this is your first inflatable kayak, or you are not familiar with this type of kayak, we urge you to obtain handling and operating instruction or experience before riding this kayak. Your dealer, national sailing federation, or yacht club will be pleased to direct you to a local open water operators' school and competent instructors.

The following illustrations will introduce details of the kayak, the equipment, and the names of its parts/features. Be familiar with each part of the kayak before using it.

⚠ WARNING: DO NOT EXCEED THE MAXIMUM CAPACITY AS SHOWN ON THE INSIDE OF THE KAYAK. Doing so will affect its handling, as well as reducing stability and increasing the chance of swamping. Make sure loads are distributed as centrally as possible. Keep loads low with heavier items in the bottom.



MAXIMUM CAPACITIES	
NOT FOR MECHANICAL PROPULSION - NO MOTORS	
1 PERSON OR 330 LBS.	
330 LBS PERSON, GEAR	
0.0 H.P. MOTOR	
PRESSURE= 1.5 PSI/0.1 BAR (main chambers)	
MANUFACTURER: RETROSPEC PERRIS, CA 92571 USA	
MODEL: RETROSPEC COASTER 1	
SERIAL #:	
MEETS ISO 6185-1 TYPE III	
 = 330 LBS/150 KGS	
MADE IN CHINA	

Warnings and Safety Instructions

⚠ WARNING: You must read the Owner's Manual and all warnings before operating your kayak!

Failure to follow the warnings; precautions; and instructions below and throughout this manual may lead to serious injury or death!

To enhance the enjoyment of your kayak and protect the safety of passenger and/or operator using the kayak, always strictly observe the following safety warnings:

- ✓ This is not a life saving device.
- ✓ Use only under competent, adult supervision.
- ✓ Never jump or dive into this kayak.
- ✓ Never leave in or near the water when not in use.
- ✓ Never tow from any vehicle or power boat.
- ✓ Adult assembly and operation required.
- ✓ Adults should inflate the chambers in numbered sequence and use the printed ruler on the hull of the kayak to check while inflating. Excessive inflation the kayak can cause the chambers to burst or cause damage to the welded seams.
- ✓ Not following the operator's instructions, which may detail important inflation and assembly sequences, can cause capsizing and drowning.
- ✓ Take a kayak safety course and get hands-on training from your kayak dealer or local kayak authorities.
- ✓ Review all safety requirements regularly.
- ✓ Never navigate alone.
- ✓ A Personal Flotation Device (PFD) is required for each passenger. It is especially important that minors/children and non-swimmers wear a personal flotation device at all times.
- ✓ Children and non-swimmers need special instruction in the use of PFDs.

- ✓ Use caution when stepping or climbing aboard the kayak. Step into the center of the kayak for maximum stability.
- ✓ Distribute the weight of passenger, gear, tackle box and accessories evenly so that the kayak sits even front to back and side to side. Uneven distribution of persons or loads in the kayak can cause capsizing and drowning.
- ✓ Do not use your kayak if you suspect a puncture or leak. It might be unsafe.
- ✓ **BEWARE OF OFFSHORE WINDS AND CURRENTS.** These could be unsafe conditions.
- ✓ Follow these rules to avoid drowning, paralysis, serious injuries, or death.
- ✓ **⚠ WARNING:** It is the responsibility of the kayak operator to identify and obey all local and state laws pertaining to boat safety and required safety equipment. Consult your local authorities to ensure compliance.
- ✓ Do not allow unattended children in the kayak.
- ✓ Always make sure that at least one responsible adult is supervising all children and those who don't know how to swim at all times.
- ✓ Always maintain the proper kayak safety equipment in an easily accessible place in your kayak.
- ✓ Indicate clearly emergency phone numbers as well as safety advisories and rules (such as "No jumping or Diving").
- ✓ The total number of persons and total weight shall not exceed the information printed on the kayak. Do not exceed the maximum recommended capacities. Exceeding the data given on the capacity plate can cause capsizing, drowning, or death.

⚠ WARNING! Remember:

Do not exceed your physical ability: Determine how long you are able to paddle or swim before using your kayak.

Always paddle with others: Avoid kayaking alone.

Familiarize yourself with the body of water where you plan on using your kayak: Check for any known hazardous areas, hours of operation, and where the nearest help can be reached in case of emergency.

Don't use your kayak in severe weather or in strong windy conditions.

Hypothermia can cause death: It can occur in relatively warm water. Survival time decreases dramatically as water temperature drops as quickly as 15 minutes in 35 degree Fahrenheit water (2 degrees Celsius). Wear a wet or dry suit when necessary.

Carry a whistle on board (Required by law beyond the surf line): Allows you to signal other boaters.

Never use this kayak after sunset: Always carry a waterproof flashlight in case you are caught in the water after dark to warn other boaters of your presence. Required by US law.

Inform others of your kayaking plans: Where you plan to go and how long you plan to be gone.

Minors must be supervised at all times. The kayak must not be used by a child aged between 12 and 18 years old without adult supervision.

Avoid riding your kayak through shallow water: Fins may strike submerged objects causing damage to the fins and/or fin boxes which is not covered by warranty.

The kayak must not be used by a child aged less than 12.

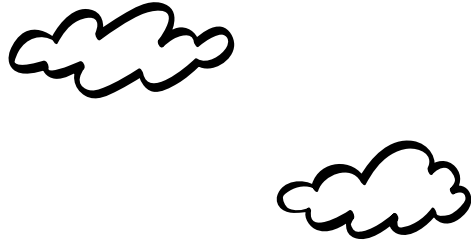
Your kayak is an in-shore, beach craft. Do not operate more than 250 yards from the shore/coastline.

Boat Safety Labels

Your kayak is affixed with various safety labels from the factory. These labels are affixed at specific locations on the kayak where safety is of essential concern. Do not remove safety labels.

What's in the Box?

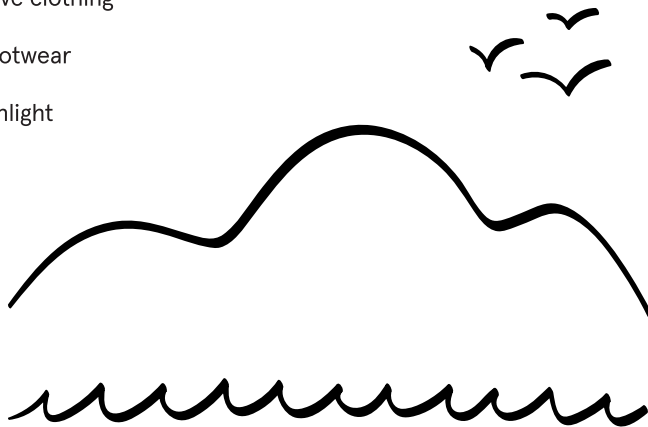
- Kayak
- 1 Seat
- 1 Pump
- 1 Paddle
- 1 Large Fin
- 1 Foot Rest
- 1 Carry Bag
- 1 Owner's Manual



What's Not in the Box?

(but we strongly recommend for your safety and security)

- US Coast Guard Approved Personal Flotation Device (PFD)
- UV 30+ protective clothing
- Slip-resistant footwear
- Waterproof flashlight
- Sunscreen
- Whistle
- Hat



Inflation

⚠ WARNING: NEVER INFLATE USING A COMPRESSOR, CO2 OR COMPRESSED AIR.

Inflate the chambers in numeric order. Inflate the center #1 first, then the two side air chambers last. **DO NOT OVERINFLATE** - If the kayak is overinflated it might burst, or the seams might tear.

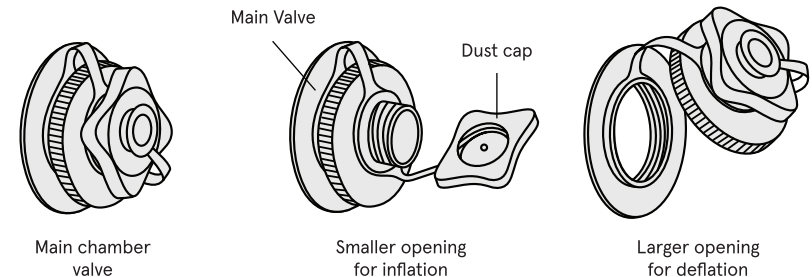
How the Valves Work

There is one valve per inflatable chamber (3 total), and the valve has two parts - for two functions. Unscrewing the dust cap will show the smaller of the two openings - this is used for inflation only. Unscrewing the larger section of the valve will show the larger opening which is used for deflation only (see figures below).



Inflation is done by pumping air into the smaller opening (under the dust cap). Deflation is not possible using this opening. Because the small opening has a no-return seal, the kayak cannot be deflated by this opening.

To deflate the kayak, unscrew the larger section to open the larger opening through which air can escape rapidly to quickly deflate the kayak.



NOTICE – Install the fins/skegs before inflation or when partially inflated.

1. UNFOLDING – Unfold your kayak on a clean, flat surface free of sharp objects and any debris.

2. ALIGN VALVES WITH OUTER FABRIC SHELL – Before inflating the kayak, ensure all inflation valves are aligned with the holes in the outer fabric shell. Each valve should be positioned in the center of the hole with an even gap around it before and after inflation. **NOTICE** – It is easier to center the valve while the kayak is partially inflated.

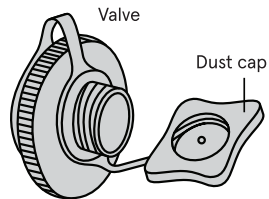
3. FINS & SKEGS – Fit the removable skeg and/or fin before inflating the kayak (or partially inflating the kayak). To do this, clip each end of the skeg into the slotted fittings at the rear of the kayak hull.

4. SIDE CHAMBERS – Partially inflate the side chambers, until the fabric cover shape begins to fill out. The kayak should feel soft or limp at this point.

5. FLOOR CHAMBER – Partially inflate the floor chamber to the same as Step 4.

6. VALVES TO COVER ALIGNMENT – Make sure the valves are aligned with the holes in the cover. Adjust the cover and/or valves to realign if necessary.

7. FULL INFLATION – Inflate the two side chambers until most of the wrinkles are gone and the kayak feels firm to touch. Do the same for the floor chamber. Do not exceed the pressure of 1.5-2.0 PSI for both the side chambers and floor chamber.



- A** – To inflate, unscrew and remove the smaller valve dust cap.
- B** – Push the push-fit screw nozzle firmly into the valve and twist clockwise tightly. Inflate once secure.
- C** – After inflation, remove nozzle and replace dust cap. These are “non-return valves – no air will escape.

**INFLATION RANGE IS 1.5 – 2.0PSI
MAXIMUM PRESSURE IS 2.0PSI**

DO NOT OVERINFLATE! Exceeding the recommended pressure can permanently damage the kayak.

CAUTION: Water temperature and weather will affect the air pressure of the kayak. In cold water/weather your kayak will lose some pressure. If this happens you may want to add more air to improve performance. In warmer water, hot weather, or prolonged sunlight, the air pressure may increase. If this happens you must let some air out of your kayak to prevent damage or failure due to over-pressure. Avoid extreme temperatures, conditions.

Seat(s) Installation

1. Attach the seat(s) to the kayak floor using the two Velcro strips running the length of the kayak.

2. With the seat(s) attached to the floor, clip the seat strap clips to the appropriate D-ring anchors on the sides of the kayak. The straps can be tightened or loosened to move the seat back to your desired position/angle.

3. Choose your desired footrest position. Attach the footrest using the same Velcro strips in Step 1 running the length of the kayak.

NOTICE – For Coaster 1-person, the paddler should position the seat in a central location. Store gear and cargo in front and behind the seat.



Operating Instructions

Preparation before departure

Know your kayak, know your environment, and share your knowledge with your passenger (if applicable):

- 1.** Get information on local laws, regulations and hazards related to water activities and kayak operation.
- 2.** Check weather forecast, local currents, tides and wind conditions.
- 3.** Advise someone on land of the time you plan to be back.
- 4.** Explain basic kayak operation to all passengers.
- 5.** Be sure that one of your passengers can operate in an emergency.
- 6.** Learn how to determine the distance you can cover and remember that bad weather conditions can alter this and previous plans.

Check the working condition of the kayak and equipment:

- 1.** Check inflation pressure.
- 2.** Check all valves.
- 3.** Check the load is evenly distributed on boat deck: front to back/side to side.

Check that required safety equipment is on board – Check the laws and regulations of the locality (or country) in which you’re boating

- 1.** One personal flotation device (PFD) for each passenger.
- 2.** The air pump, oars, repair kit, and tool kit.
- 3.** The mandatory equipment.
- 4.** Your Coaster kayak Owner’s Manual and your boating license (if applicable).
- 5.** Lights are required if operating after dark.

Rules to observe during navigation

1. Be responsible and strictly follow the safety rules. Do not neglect the safety rules, this could threaten your life and lives of others.
2. Learn to keep control of your kayak.
3. Respect local regulations and practices.
4. Navigate on "sheltered water" only.
5. Remember weather conditions can rapidly deteriorate. Always be sure that you can reach a shelter rapidly.
6. DO NOT consume alcohol or drugs before or while operating your kayak. All passengers should maintain sobriety before and during your voyage.
7. Do not smoke on board or when preparing your kayak for voyage.
8. No bow riding. Bow riding is illegal in most areas and is extremely dangerous.
9. Be very careful when landing. Arms and legs can be hurt when hanging off.
10. Always avoid areas where divers/swimmers are in the water. Keep a sharp lookout especially when operating near beaches and launch sites. The Alpha Flag indicates proximity of divers. You MUST stay at a good distance (minimum 50 yards).

Deflation, Maintenance and Storage

Clean and Dry Your Kayak

Clean your kayak after your trip to prevent damage from sand, salt water, and sun exposure. Use of a garden hose and a sponge with mild soap can clean most dirt. Make sure the kayak is clean and wipe it thoroughly with a dry cloth before storing. Do not store kayak while still wet to prevent mildew & mold. **NEVER** use solvents to clean the kayak, solvents will damage the material and plastic components in system. Store all kayak accessories in a dry storage location with ventilation.

Deflation

Leave the dust cap screwed on the small inflation valve and unscrew the Large Valve opening. Work in reverse order: deflate floor chamber first, followed by two side chambers. **NOTICE** – Reverse pump to completely deflate all chambers.

- Before storing, make sure your kayak is CLEAN and DRY!
- Choose a dry and cool place to store the kayak.
- Don't hang the kayak.
- Don't place any heavy or sharp objects on it.

Your kayak is designed to be storable, seasonal kayak. If you live in a temperate area in which the kayak will not be in use all year-round, it is **STRONGLY RECOMMENDED** to deflate the kayak and dry it thoroughly and store it in a protected area for the off-season. This will help extend your kayak and prevent a safety hazard from developing while the kayak is not in use.

Storage

1. Remove ALL accessories and gear from the kayak: fishing rod, tacklebox, oars, coolers, etc.
2. Open all valves and deflate the kayak completely.
3. Fold the kayak (make sure that the kayak is clean and dry. See the above Maintenance & Storage chapter).

Certain household cleaning solvents, chemicals and other liquids (such as battery acid, oil and gasoline) could damage the PVC fabric. In the event of spill or mishandling, you should check for leaks and inspect for structural integrity.

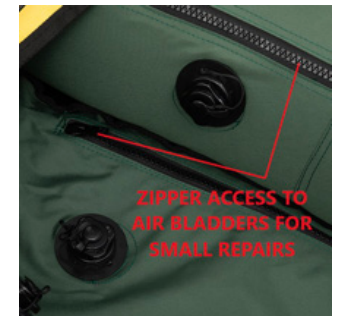
Repairs

Checking for Leaks

Retrospec Coaster kayaks feature inflatable chambers zipper encased in a tough Nylon fabric outer shell for durability. If you suspect an air chamber has been damaged and is leaking, promptly check for punctures. **NOTICE** – Before removing inflatable chambers to check for punctures, ensure all valves are fully tightened. Sometimes loose valves can leak. Reinflate and check again. To check the inflatable chambers for damage, deflate the kayak and unzip the outer fabric shell.

⚠ WARNING – DO NOT UNZIP THE OUTER FABRIC SHELL WHILE THE KAYAK IS FULLY INFLATED.

1. Remove the suspect inflation chamber(s) and check for obvious holes. If there are no holes visible, there may be small pinhole(s).
2. To check for pinholes, inflate the chamber, submerge in water and look for air bubbles escaping. Also, you can cover the area in soapy water and look for bubbles made by the escaping air. If using this method, be sure to fully rinse and dry the chamber before repairing.
3. Repair small holes and tears in inflatable bladders with the included repair kit.



Repairing Pinholes

1. After locating the pinhole, mark the location
2. Deflate the air chamber and thoroughly dry the area (if water or soap is used). Apply 1-2 drops of adhesive. Allow the glue to DRY completely (~4 hours)
3. Do not inflate kayak for minimum 12 hours. Wear protective gloves when using glue (not included).

Repairing Small Punctures and Cuts

1. Wear protective gloves when using glue (not included).
2. Thoroughly clean the area surrounding the leak to remove moisture and dirt.
3. Rub sandpaper around damaged area to roughen surface for good adhesion.
4. Use the repair patch that matches the chamber fabric to cover the hole. Trim patch to 1 1/4" (3cm) beyond damaged area and round off any corners.
5. Lightly coat both the patch and damaged chamber area with adhesive.
6. Leave the glue for approximately 3 minutes until tacky before centering patch over the damaged area and pressing it firmly into place, smoothing out bubbles or wrinkles. Allow the patch to cure for a minimum of 12 hours before inflating.

⚠ WARNING! Avoid the glue contacting with your skin or eyes, wear gloves, and keep glue away from the reach of children.

Warranty

Retrospec warrants manufacturer defects on all kayaks for up to one year from the date of purchase. We warrant against any manufacturer defect in workmanship and materials during this one-year window. The Warranty is valid only to the original retail consumer purchaser. Determining manufacturer defect is at the sole discretion of Retrospec. We reserve the right to request images or otherwise for proof of manufacturer defect. This warranty commitment does not cover claim conditions listed below.

Product should be returned to the company from which it was purchased. Enclose copy of invoice/receipt including date of purchase with your name, address, daytime contact phone number, and email address. Kayaks must be dry and clean before being returned. Dirty, wet kayaks will not be repaired.

This warranty commitment for inflatable kayaks does not cover claim conditions including:

- ✗ Damage or defects incurred by impact with any damaging materials or objects including, but not limited to rocks, shoals, docks, other kayaks, boats, etc. are **NOT** covered by the warranty.
- ✗ Damage or defects incurred by use outside of the kayak's intended purpose is **NOT** covered by the warranty.
- ✗ Damage incurred due to normal wear and tear of the kayak is **NOT** covered by the warranty.
- ✗ Damage or defects incurred by transporting, loading, unloading, dropping, or general mishandling of the kayak is **NOT** covered by the warranty.
- ✗ Damage or defects incurred due to incorrect prolonged storage of kayak including, but not limited to storing in extreme temperatures over 90°F and/or under 32°F, prolonged exposure to direct sunlight while not in use, or prolonged storage in closed, damp conditions is **NOT** covered by the warranty.
- ✗ Kayaks used in rental, commercial, classes, or otherwise are **NOT** covered under warranty.
- ✗ Damage incurred by improper forcing, shoving, or general improper fin installation are **NOT** covered by the warranty.

Any modifications made to your inflatable kayak including, but not limited to, the replacement of parts or components with non-original equipment or the addition of aftermarket motors, seats, or otherwise voids the warranty.

This kayak is not designed or intended for commercial use, i.e., rentals, classes.

Contact Us



Need some help with your new gear? Just want to say “hey” and talk to someone on our team? We’re here for that too.
team@retrospec.com

Give us a follow, while you’re at it:

Instagram: @retrospec
#retrospec
#readytooutdoor

Making
Nature
Second
Nature
~~~~~

