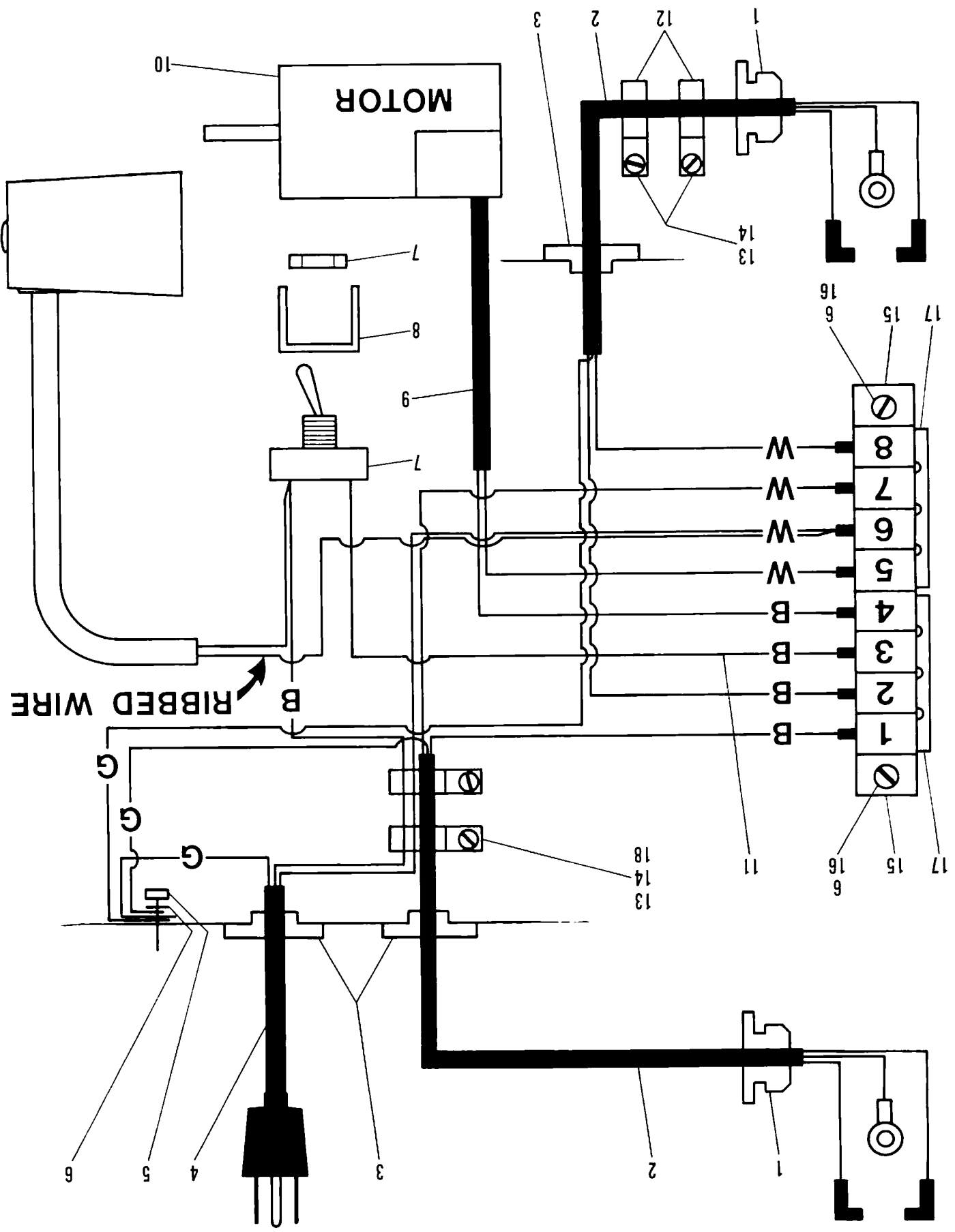


ELECTRICAL SCHEMATIC

ITEM	PART NO.	QTY.	DESCRIPTION
1	21144	2	Relief, Strain
2	25812	2	Cord, Motor
3	25783	3	Connector, Cable
4	25813	1	Cord, Set
5	24782	1	Screw
6	20545	3	Washer, Lock
7	6893	1	Switch
8	25930	1	Guard, Switch
9	3244	1	Cable, Motor
10	25745	1	Motor
	*26491	1	Motor
11	25822	1	Wire, Jumper
12	25873	2	Hanger, Cord
13	3910	4	Washer, Lock
14	24759	4	Screw, Button Head
15	25815	1	Board, Terminal
16	25821	2	Screw, Machine
17	25814	2	Jumper
18	6394	2	Clamp

*Canada only

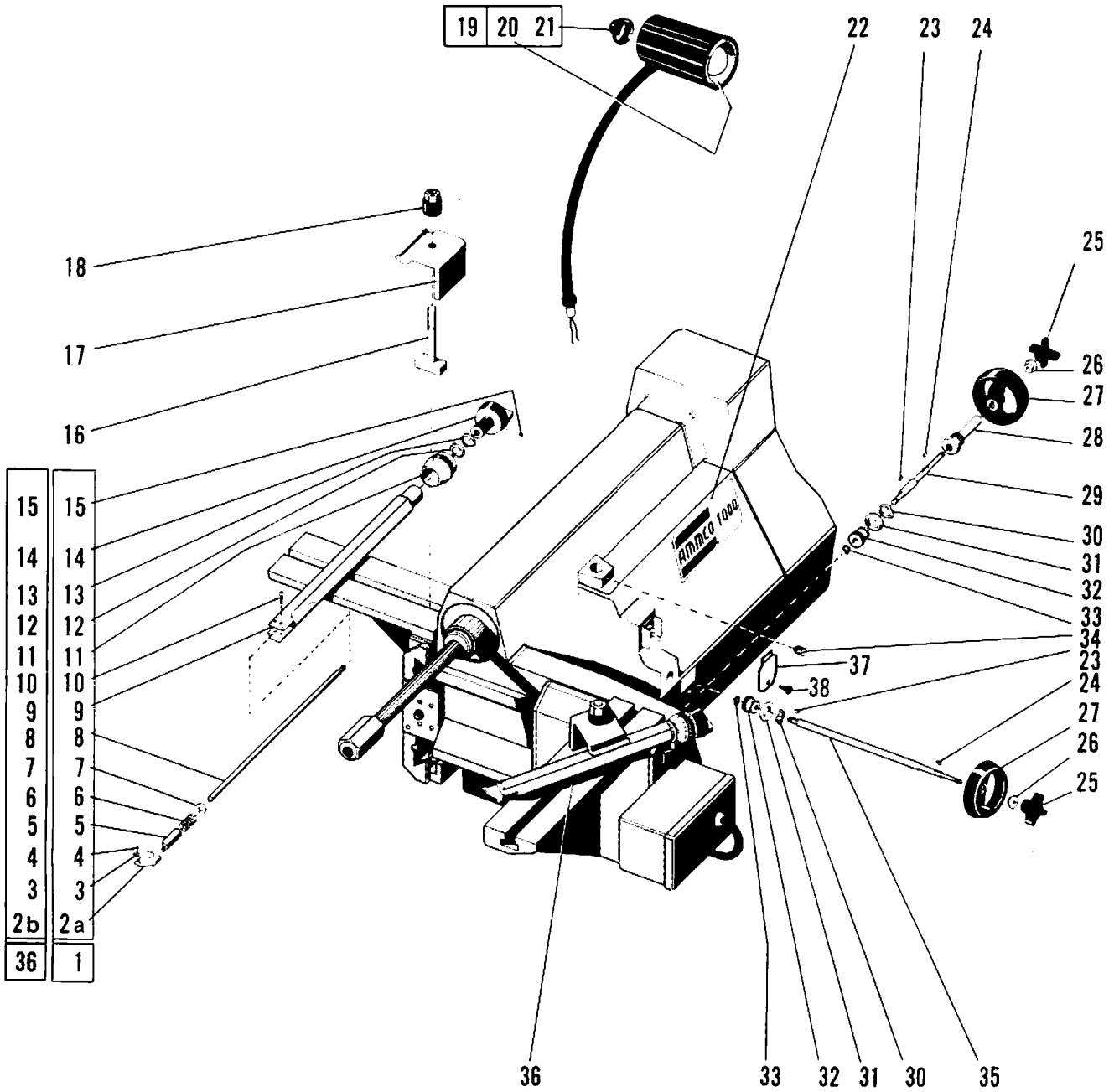
ELECTRICAL SCHEMATIC



TOOL BAR ASSEMBLY, FEED ENGAGEMENT ASSEMBLIES, & LAMP ASSEMBLY

ITEM	PART NO.	QTY.	DESCRIPTION
1	25760	1	Boring Bar Assembly, R.H.
2	a) 25761	1	Holder, R.H.
	b) 25762	1	Holder, L.H.
3	16914	1	Tip, Carbide
4	6499	1	Screw, Machine
5	25754	1	Sleeve
6	25756	1	Spring
7	24922	1	Washer, Flat
8	25755	1	Rod, Dial
9	25753	1	Bar, Boring
10	25757	2	Screw, Shoulder
11	25752	1	Dial, Micrometer
12	25758	1	Washer, Wave
13	25759	1	Ring, Retaining
14	25751	1	Dial, Depth
15	3338	1	Screw, Set
16	23772	2	Bolt, "T"
17	25833	2	Clamp
18	11227	2	Nut & Washer Assembly
19	25996	1	Lamp Assembly
20	22763	1	Socket
21	22764	1	Boot, Toggle
22	25872	1	Nameplate, AMMCO
23	6972	2	Key, Woodruff
24	6971	2	Key, Woodruff
25	25837	2	Knob
26	25807	2	Washer
27	25765	2	Handwheel
28	25801	1	Sleeve
29	25803	1	Shaft, Feed
30	3174	2	Ring, Retaining
31	25856	2	Retainer, Gear
32	25804	2	Gear, Feed
33	25857	2	Ring, Retaining
34	212	1	Screw, Set
35	25802	1	Shaft, Feed
36	25750	1	Boring Bar Assembly, L.H.
37	25893	1	Plate, Cover
38	26497	1	Screw, Cover

TOOL BAR ASSEMBLY, FEED ENGAGEMENT ASSEMBLIES, & LAMP ASSEMBLY

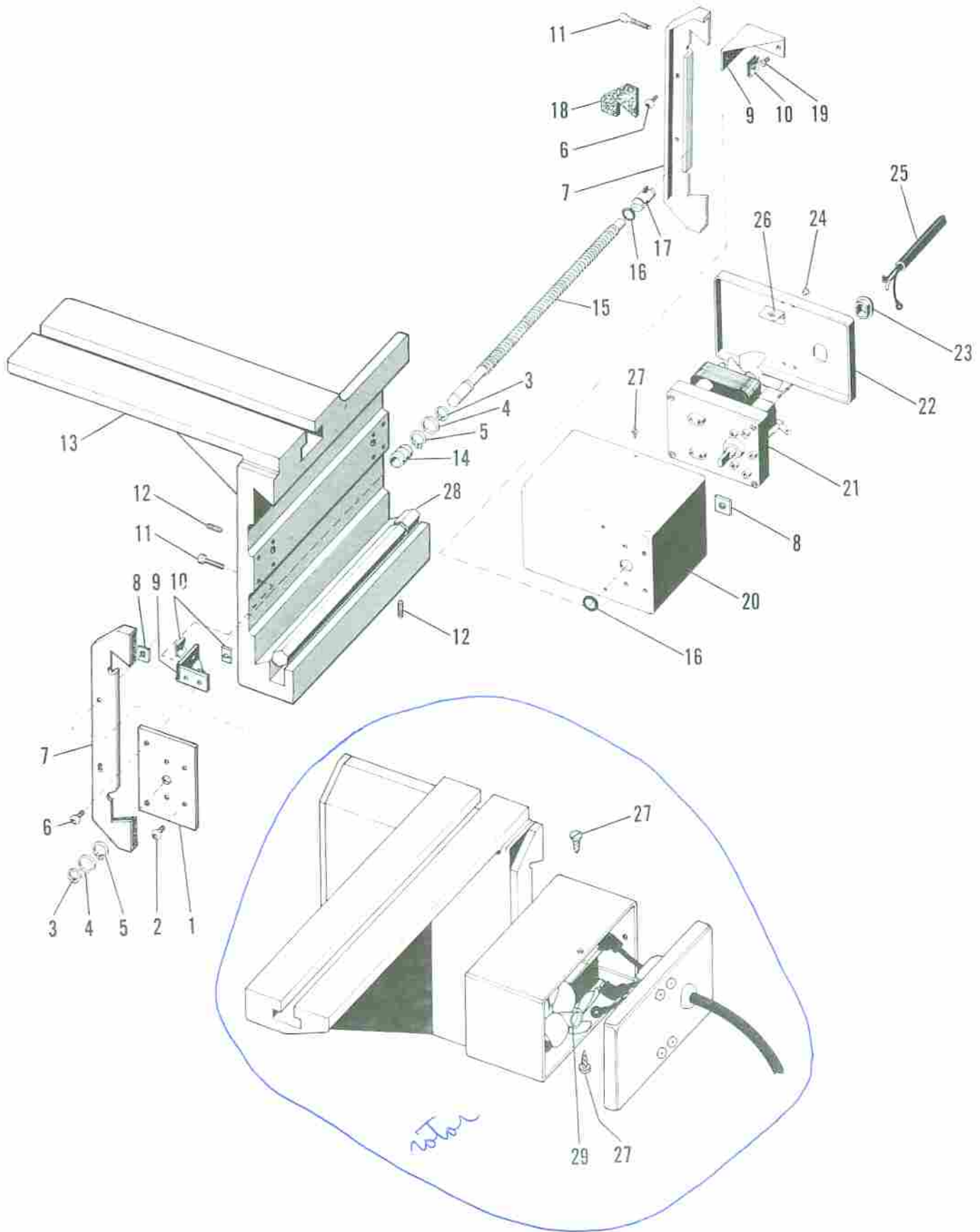


SLIDE ASSEMBLIES

ITEM	PART NO.	QTY.	DESCRIPTION
1	25772	2	Plate, End
2	24759	8	Screw, Button Head
3	25792	4	Ring, Retaining
4	25785	4	Washer, Thrust
5	25793	4	Ring, Retaining
6	24759	14	Screw, Button Head
7	25774	4	Shield, Wiper
8	25794	4	Nut
9	25773	8	Gusset
10	25791	24	Nut, Clip
11	6353	16	Screw, Cap
12	25786	10	Screw, Dog Point Set
13	25749	2	Slide
14	25768	2	Bushing
15	25766	2	Screw, Lead
16	4639	4	Ring "O"
17	25767	2	Coupler
18	25771	8	Wiper
19	25788	8	Screw, Flat Head
20	26324	2	Box, Motor
21	26322	1	Motor, 6 RPM
22	26326	2	Cover, Box
23	21144	2	Strain, Relief
24	26002	8	Rivet, Pop
25	25812	2	Cord, Motor
26	25790	4	Bracket, Angle
27	25789	6	Screw, Self-Tapping
28	25769	2	Gib
29	26321	1	Motor, 4 RPM

rotor motor can be used on drum side but not vice versa

SLIDE ASSEMBLIES

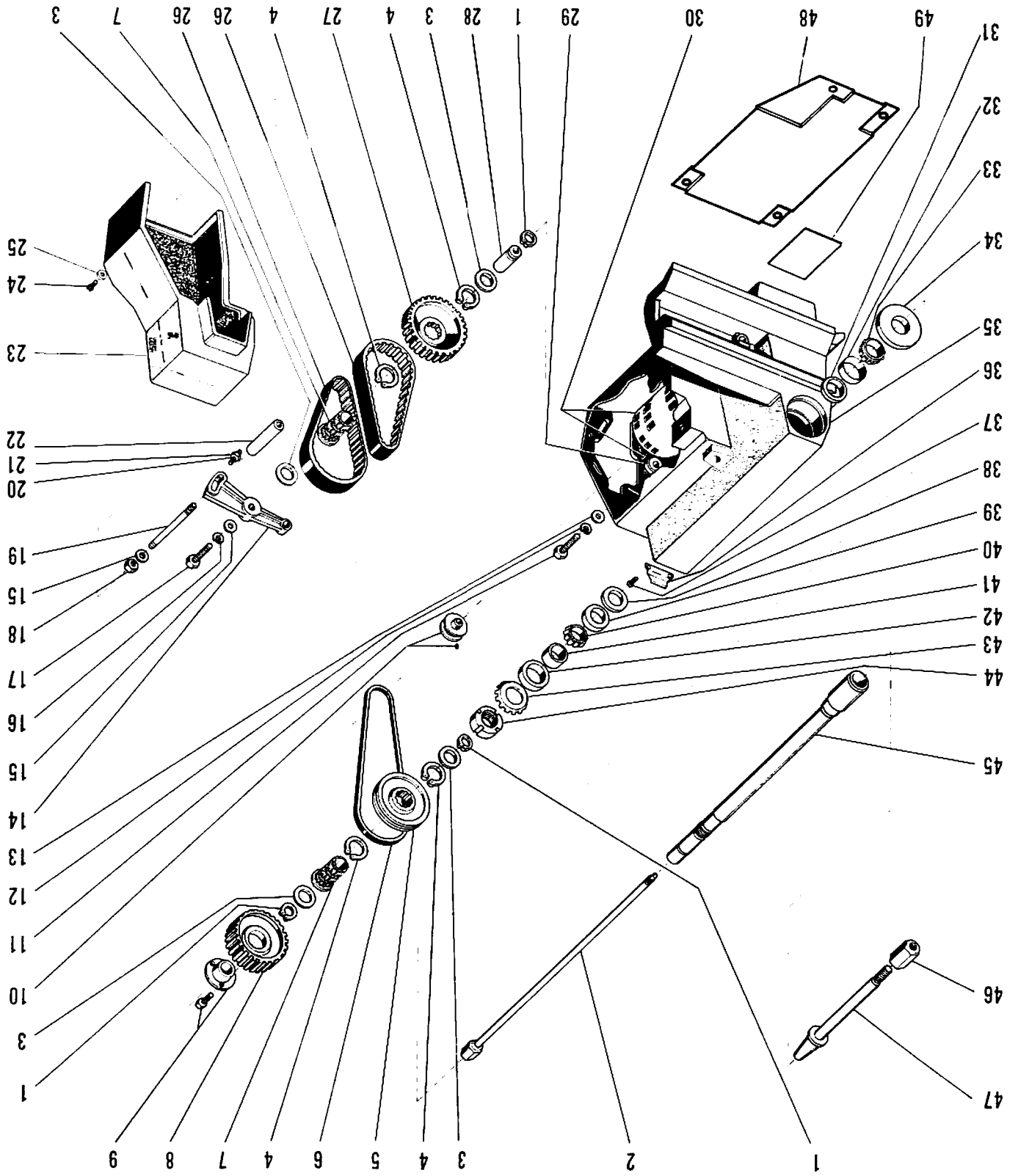


SPINDLE DRIVE ASSEMBLY

ITEM	PART NO.	QTY.	DESCRIPTION	ITEM	PART NO.	QTY.	DESCRIPTION
1	25713	3	Ring, Retaining	26	25746	2	Belt
2	25725	1	Drawbar & Nut Assembly	27	25719	1	Pulley
3	25714	4	Race, Thrust	28	25798	1	Stub, Idler
4	25715	4	Ring, Retaining	29	25748	4	Spacer, Motor
5	25721	1	Pulley, "V"	30	25745	1	Motor & Key
6	25747	1	Belt, "V"		26491	1	Motor & Key
7	25724	2	Pulley	31	25707	1	Seal
8	25728	1	Pulley	32	25706	1	Cup, Bearing
9	25717	1	Bushing & Cap Screw	33	25705	1	Cone, Bearing
10	25799	1	Pulley & Set Screw	34	25704	1	Seal
11	4425	4	Screw, Cap Hex Head	35	25555	1	Main Frame
12	21557	4	Washer, Lock	36	26056	1	Clip
13	279	4	Washer, Flat	37	26497	2	Screw, Hex Head
14	25744	1	Bracket, Idler	38	25708	1	Seal
15	3214	3	Washer, Flat	39	25711	1	Cup, Bearing
16	3476	1	Washer, Lock	40	25710	1	Cone, Bearing
17	5659	1	Screw, Hex Head	41	25727	1	Spacer, Bearing
18	2309	2	Nut, Stop	42	25709	1	Seal
19	25796	2	Stud	43	6981	1	Washer, Lock
20	25810	1	Screw, Set	44	6980	1	Nut, Lock
21	3528	1	Nut, Jam	45	25718	1	Spindle
22	25797	2	Spacer	46	25811	1	Nut, Arbor
23	25770	1	Guard, Belt	47	25720	1	Arbor
24	24759	2	Screw, Button Head	48	*25894	1	Plate, Bottom
25	26057	2	Washer, Flat	49	*25896	1	Label, Instruction

*Canada only

SPINDLE DRIVE ASSEMBLY



PARTS IDENTIFICATION

The following pages illustrate and identify the component parts of the Model 1000 Brake Lathe.

A complete parts breakdown with exploded view illustrations are provided to facilitate the ordering of spare or replacement parts.

Assemblies are noted where it is recommended the individual parts not be ordered separately. These parts are available only as assemblies because some parts are staked, pinned, or press fitted, then drilled, machined or bored. Close tolerances must be maintained in assembly.

LIMITED WARRANTY

Ammco Tools, Inc. (AMMCO) warrants that this product when purchased in new and unused condition is free from defective materials or workmanship for a period of one year from date of purchase. This warranty does not apply to a product that has been purchased in used condition, that has failed due to improper repairs or service, or that has sustained damage caused by accident or improper use.

REMEDIES . . INCLUDING EMERGENCY PARTS

AMMCO's liability for any such defective material or workmanship shall be limited exclusively to replacing defective parts or, in appropriate cases, repaying or crediting the purchase price thereof. In the event parts are to be replaced, AMMCO will give its full cooperation on all emergency parts orders placed directly with the Wholesaler. Emergency parts orders should be written separately and **NOT** included on standard parts orders.

AMMCO DISCLAIMS all other express warranties and all implied warranties as to the quality of any goods, including implied warranties of MERCHANTABILITY and FITNESS FOR PARTICULAR PURPOSES. UNDER NO CIRCUMSTANCES WHATSOEVER, SHALL AMMCO BE LIABLE FOR ANY CONSEQUENTIAL DAMAGES, WHETHER BASED ON LOST GOODWILL, LOST RESALE PROFITS, WORK STOPPAGE, IMPAIRMENT OF OTHER GOODS OR OTHERWISE AND WHETHER ARISING OUT OF BREACH OF ANY EXPRESS OR IMPLIED WARRANTY, BREACH OF CONTRACT, NEGLIGENCE, OR OTHERWISE, EXCEPT ONLY IN THE CASE OF PERSONAL INJURY WHERE APPLICABLE LAW REQUIRES SUCH LIABILITY.

Because of AMMCO's constant program of improvement, specifications are subject to change without notice.

Serial Number _____

Date Purchased _____