



2024
PRODUCT
CATALOG

MT  **RSR**

TABLE OF CONTENTS



**“YOUR #1 UNDER-CAR
EQUIPMENT PARTS
EXPERTS”**

Laurent Desrochers



**SHOP
SUPPLY**

Your everyday needs for any shop. From the tools it takes to make a mess to the supplies you need to clean it up, browse our selection of commonly needed supplies. Tools, TPMS sensors, safety, abrasives, and more are at your fingertips.

SUPPLY

SAFETY

TPMS

Clamp-In Sensor



Snap-In Sensor





MT-RSR				Schrader			Xtra-Seal		Dill
#	SKU	Description	Length	EA	50/Box	500/Box	50/Box	500/Box	500/Box
1	TR413	TR413 Snap-in Tire Valve - BX/100	1-1/4"	SCV413	SCV413-50	SCV413-500	XSC413-50	XSC413-500	DILV413-500
2	TR414	TR414 Snap-in Rubber Tire Valve	1-1/2"	SCV414	SCV414-50	SCV414-500	XSC414-50	XSC414-500	DILV414-500
3	TR418	TR418 Snap-in Rubber Tire Valve	2"	SCV418	SCV418-50	SCV418-500	XSC418-50	XSC418-500	DILV415-500
4	TR415	TR415 Snap-in Rubber Tire Valve	1-1/4"	SCV415	SCV415-50	SCV415-500	XSC415-500		DILV415-500
5	TR413AC	Chrome TR413 Snap-in Tire Valve	1-1/4"						

MT-RSR		
#	SKU	Description
1	TR416	Bolt-in Valve, 0.453" & 0.625" rim hole, Eff length: 40mm
2	TR416-50	Nickel Plated Straight Tire Valve 1.44" 50PK
3	TR618A	TR #618A, Tubeless Air/Liquid Valve



MT-RSR		
#	SKU	Description
1	TR509	Truck Valve, 23" rim hole, Eff length: 144mm, 90°
2	TR510	Truck Valve, 23" rim hole, Eff length: 163mm, 90°



MT-RSR		
#	SKU	Description
1	TR545D	Nickel Plated Brass Valve, 0.39" rim hole, Eff length: 89mm, 60°
2	TR555D	Grommet Seal Valve, 0.39" rim hole, Eff length: 89mm



MT-RSR		
#	SKU	Description
1	TR501	Truck and Bus Tyre Valve, 0.625" rim hole, Eff length: 42mm
2	TR571	Truck and Bus Tyre Valve, 0.625" rim hole, Eff length: 90mm
3	TR572	Truck and Bus Tyre Valve, 0.625" rim hole, Eff length: 99mm
4	TR573	Truck and Bus Tyre Valve, 0.625" rim hole, Eff length: 115mm
5	TR575	Truck and Bus Tyre Valve, 0.625" rim hole, Eff length: 33mm



#	SKU	Description	Interchangeable Part
1	TPMSCORE-490	TPMS Nickel Plated Valve Core - 100/Box	
2	CORE-490	Brass Red Teflon Sealing Valve Cores - 100/Box	
3	CAP-492	Black Tire Valve Cap - 100/Box	TMRT1111
4	X17492-500	Black Plastic Valve Caps with O-ring 500/box	T1118-500
5	X17492	Black Plastic Valve Caps with O-ring 100/box	T1100-100
6	CAP-4925	Gray TPMS Tire Valve Cap - 100/Box	
7	HAM-2128	Standard TPMS Valve Caps, Grey - 100/Box	
8	CAP-492NP	Gray TPMS Tire Valve Cap - 100/Box	TMRT1111
9	CAP-493C	Chromed Plastic Tire Valve Cap - 100/Box	
10	14-579	Double Seal Valve Cap	TMRT1579
11	HAM-2101	Metal Valve Cap, Nickel Plated - 100/Box	
12	HAM-2158	Long Black TPMS Valve Caps - 100/Box	HAM-6207, 20008, 20018
13	HAM-2105D3	Plastic Cap, With Rubber Grommet, Green - 100/Box	TMRT1106

TPMS - TOOLS



#	SKU	Description
1	18165	Screwdriver Valve Core Tool TV-2
2	HAM-3150	TPMS Valve Core Torque Tool, Red
3	181612	USA Made Long Valve Core Tool 8 overall Length 5- 1/8" Shaft
4	DY-160	Valve Puller w/rubber head

SOCKET - TOOLS



#	SKU	Description	Interchangeable Part
1	37350	Hub Bro Cleaner 1/2" Sq. Drive	
2	37355	Hub Bro Cleaner replacement Disc	
3	ESC-50170	ESCO Stud Kleen Stud and Wheel Cleaner	ESC50170
4	ACA1431-2	1/2" Aluminum Impact Wrench with 2" Anvil	
5	3FR250F	1/2" Drive Split-Beam Torque Wrench Click Style 250 ft. LB.	
6	122019K2	1/2" DR. 4-Piece Flank Bite Damaged Nut Removal Socket Set	
7	68025	SUV/LT Spline Plus Kit	
8	67817	1/2" Dr. 17MM Spline Impact Socket with Sleeve	
9	67819	1/2" Dr. 19MM Spline Impact Socket with Sleeve	
10	67821	1/2" Dr. 21MM Spline Impact Socket with Sleeve	
11	14-3303	3-Pc 1/2" Drive Spline With Protective Sleeve Socket Set	KTI33303, TMRKI33350
12	67800	3 Pcs Spline-Plus Socket Set	TMRAMN67800
13	33025	3" 1/2" Drive Impact Socket Extension	KTI33003, TMRKI33003
14	14-1190	4 Pcs 1/2". Drive Flip Socket Set With 3" Extension	CTA1190, TMRCTA1190
15	14-3350	7-pc 1/2" Drive Torque Extension Set	KTI33350, TMRKI33350
16	JS-79321	1" Drive by 35MM 6-Point by 17MM 4-Point Combo Budd Wheel Impact Socket	
17	JS-79322	1" Drive by 38MM 6-Point by 19MM 4-Point Combo Budd Wheel Impact Socket	
18	JS-79323	1" Drive by 38MM 6-Point by 20MM 4-Point Combo Budd Wheel Impact Socket	
19	JS-79324	1" Drive by 41MM 6-Point by 21MM 4-Point Combo Budd Wheel Impact Socket	
20	JS-79403	17MM Extra Thin Wall 1/2" Drive	18-517, STP-SKT
21	JS-60229	1/2" Dr. 19MM x 21MM Deep Flip	



#	SKU	Description	Interchangeable Part
22	JS-60557	1" DR. 17MM 4-Point Standard Budd Impact Socket	
23	JS-79292	1" Drive Deep Impact Socket 33MM 6 Point	
24	JS-79320	5 Piece 1" DR. Combination Budd Wheel Impact Socket Set	
25	JS-79325	1" Dr. Budd Hex and Square Impact Socket 1-1/2" X 13/16"	
26	JS-79390	1" DR. 21MM 4-Point Standard Budd Impact Socket	
27	JS-79404	19MM Extra Thin Wall 1/2" Drive	
28	JS-79405	21MM Extra Thin Wall 1/2" Drive	
29	79400	1/2" DR. 19MM X 21MM Deep Thin Wall Flip Impact Socket	
30	79402	1/2" DR. 7/8" X 15/16" Deep Thin Wall Flip Impact Socket	
31	14-02840	9 Piece Wheel Lock Removal Kit, 1/2" Drive	
32	14-1017MDT	1/2" Drive x 17MM Extra Thin Wall Impact Socket	167-10172
33	14-12051	1/2" Drive 5-Piece 1/2 Size Flip Socket Set	167-12051, 000524
34	14-1246D	1/2" Dr. x 3/4" x 13/16" Deep Flip Impact Socket	167-12460, TI1246D, TMRTI1246D
35	14-1246DT	1/2" Dr. x 3/4" x 13/16" Deep Thinwall Flip	167-12461, TI1246DT, TMRTI1246DT
36	14-1291D	1/2" Dr. x 19MM x 21MM Deep Flip Impact Socket	167-12912, TI1291D, TMRTI1291D
37	14-1291DT	1/2" Dr. x 19MM x 21MM Deep Flip Impact Socket - Thin Wall	167-12912, TI1291DT, TMRTI1291DT
38	14-18195	1/2" Dr. x 18.5MM x 19.5MM Deep Flip Impact Socket	167-18195
39	14-21215	1/2" Dr. x 21MM x 21.5MM Deep Flip Impact Socket	167-21215
40	14-215225	1/2" Drive x 21.5MM x 22.5MM Deep Flip Impact Socket	167-21225
41	14-22225	1/2" Drive x 22MM x 22.5MM Deep Flip Impact Socket	167-22225
42	14-TSKIT	5 Piece Drive Twist Socket Set	

ELECTRICAL



#	SKU	Description
1	CTBL4	Black Cable Tie 4" 18LB
2	CTBL6	Black Cable Tie 6" 40LB
3	CTBL8	Black Cable Tie 8" 50 LB
4	CTBL11	Black Cable Tie 11" 50 LB
5	CTBL14	Black Cable Tie 14" 50 LB
6	CTBL14W	Black Cable Tie 14" 120 LB
7	CTBL24	Black Cable Tie 24" 175 LB

DRAIN PLUGS

HOSE CLAMPS



#	SKU	Description	Interchangeable Part
1	HC-DISPLAY	Hose Clamp Display 32" X 25" X 6" (Case Only no Clamps)	
2	HC-Rack	Rack for standard clamp sizes 4-36, mini sizes 4 & 6	
3	HCM-4E	#4 - 7/32" TO 5/8" MINI HOSE CLAMP (BOX OF 10)	TMRHCM-4E
4	HCM-6E	#6 - 7/16" TO 25/32" MINI HOSE CLAMP (BOX OF 10)	TMRHCM-6E
5	HC2-6E	#6 - 7/16" TO 25/32" Standard HOSE CLAMP (BOX OF 10)	TMRHC2-6E
6	HC2-8E	#8 - 1/2" TO 29/32" STANDARD HOSE CLAMP (Box of 10)	TMRHC2-8E
7	HC2-10E	#10 - 9/16" TO 1-1/16" STANDARD HOSE CLAMP (BOX OF 10)	TMRHC2-10E
8	HC2-12E	#12 - 11/16" TO 1-1/4" STANDARD HOSE CLAMP (Box of 10)	TMRHC2-12E
9	HC2-16E	#16 - 13/16" TO 1-1/2" STANDARD HOSE CLAMP (BOX OF 10)	TMRHC2-16E
10	HC2-20E	#20 - 13/16" TO 1-3/4" STANDARD HOSE CLAMP (Box of 10)	TMRHC2-20E
11	HC2-24E	#24 - 1-1/16" TO 2" STANDARD HOSE CLAMP (Box of 10)	TMRHC2-24E
12	HC2-28E	#28 - 1-5/16" TO 2-1/4" STANDARD HOSE CLAMP (Box of 10)	TMRHC2-28E
13	HC2-32E	#32 - 1-9/16" TO 2-1/2" STANDARD HOSE CLAMP (Box of 10)	TMRHC2-32E
14	HC2-36E	#36 1-13/16" TO 2-3/4" STANDARD HOSE CLAMP (Box of 10)	TMRHC2-36E

FASTNERS



#	SKU	Description	Interchangeable Part
1	PC-12	Vibration-Resistant Single Pinch Zinc-Plated Clamps	
2	PC-58	5/8" Open Pinch Clamps (.543" - 5/8") 13.8-15.7MM	
3	PC-716	7/16" Pinch Hose Clamps (.381" - 7/16") 9.7-11.3MM	
4	PC-78	7/8" Open Pinch Clamps (.779" - 7/8") 19.8-22.6MM	
5	RA-8115	Retainer Assortment - Door Trim Panel, GM, Ford, AMC	
6	RC-607-50	Black Nylon Trim Panel Ret. - 1/4" Hole Size 1 3/32" Stem (Pack of 50)	
7	RC-610-25	Black Universal Nylon Shield Retainer Head Diameter 1", Stem Diameter 1/4", Stem Length 25/32" Ford # N808370-S (pack of 25)	
8	RC-612-25	Black Universal Nylon Shield Retainer Head Diameter 11/16", Stem Diameter 5/16", Stem Length 5/8" GM # 332364 (Pack of 25)	GM # 332364
9	RC-613-25	Black Universal Nylon Hood Seal Retainer Head Diameter 3/4", Stem Diameter 5/16", Stem Length 1-3/8" GM # 14074081 (Pack of 25)	GM # 14074081
10	RC-614-25	Black Universal Nylon Shield Retainer Head Diameter 11/16", Stem Diameter 5/16", Stem Length 13/16" GM # 1605396 (Pack of 25)	GM # 1605396
11	RC-615-25	Black Universal Nylon Shield Retainer Head Diameter 11/16", Stem Diameter 5/16", Stem Length 1-1/16" GM # 10121502 (Pack of 25)	GM # 10121502
12	RC-616-50	Black Universal Nylon Fascia Panel Retainer Head Diameter 25mm, Stem Diameter 7.5mm, Stem Length 20mm Chrysler # 6501067 (Pack of 50)	Chrysler # 6501067
13	RC-617-25	Black Nylon Shield Retainers - 1/4" Hole 1" Head 1 1/16" Stem (Pack of 25)	
14	RC-618-25	Black Nylon Shield Retainers - 9/32" Hole 1 11/64" Stem Lgth (Pack of 25)	
15	RC-621-25	Black Universal Nylon Hood Seal Retainer Head Diameter 3/4", Stem Diameter 11/32", Stem Length 7/8" GM # 21094146 (Pack of 25)	



#	SKU	Description	Interchangeable Part
16	RC-622-50	Black Universal Nylon Trim Panel Retainer Head Diameter 5/8", Stem Diameter 3/8", Stem Length 3/4" Ford # N807721-S (Pack of 50)	
17	RC-623-25	Black Universal Nylon Panel Retainer Head Diameter 1", Stem Diameter 7/16", Stem Length 13/16" GM # 1619321 (Pack of 25)	GM # 1619321
18	RC-624-25	Black Universal Nylon Fascia Bumper Retainer Head Diameter 22mm, Stem Diameter 11mm, Stem Length 28mm Ford # N804379S, Pack of 25	Ford # N804379S
19	RC-633-25	Black Nylon Door Panel Ret - 8mm Hole 12.7mm Hd 19mm Stem (Pack of 25)	
20	RC-638-50	Natural Nylon Door Panel Ret - 6.5mm Hole Size 21mm Stem Lgth (Pack of 50)	MI638, TMRMI638, 15670, 1646
21	RC-639-25	White Nylon Door Panel Ret - 7mm Hole Size 24mm Stem Length (Pack of 25)	
22	RC-642-50	White Nylon Door Push Ret - 1/4" Hole Size 11/16" Stem Length (Pack of 50)	
23	RC-643-50	White Nylon Door Panel Retainers - 7mm Hole 13mm Head 15mm Stem (Pack of 50)	MI643-50, TMRMI643-50, 18915, 2063
24	RC-644-50	Natural Nylon Door Panel Retainer - 7mm Hole Size 22mm Stem Length (Pack of 50)	
25	RC-645-25	White Nylon Door Panel Retainer - 9.5mm Hole 15mm Head 14mm Stem (Pack of 25)	
26	RC-652-50	Black Nylon Front Fender Mud Skirt & Fender Liner Push-Type Retainer Head Dia: 11/16", Stem Length: 9/16", Fits Into 1/4" Hole,	GM 1981-on # 14019205, 14019206, Chrysler # 34201621
27	RC-653-25	Black Nylon Push-Type Retainer Head Diameter 11/16", Stem Length 13/16", Fits Into 1/4" Hole Chrysler # 6501925 (Pack of 25)	Chrysler #6501925
28	RC-654-25	Black Nylon Wheel Opening Molding Push-Type Retainer Head Diameter 19/32", Stem Length 3/4", Fits Into 1/4" Hole GM #21077123 (25 pack)	GM #21077123
29	RC-655-25	Black Nylon Push Type Ret - 8mm Hole Size 13.5mm Stem Lgth (Pack of 25)	MI655, TMRMI655, 14011, 5676
30	RC-657-15	Black Nylon Push Type Retainer - 8mm Hole Size 9mm Stem Length (Pack of 15)	



#	SKU	Description	Interchangeable Part
31	RC-658-25	Black Nylon Rocker Panel Retainer Head Diameter 15mm, Stem Length 20mm, Fits Into 8mm Hole (Pack of 25)	GM # 21075686
32	RC-659-25	Black Nylon Push-Type Retainer 16mm Head Diameter 16mm, Stem Length 20mm, Fits Into 8mm Hole (Pack of 25)	Nissan # 76882-57A00
33	RC-663-25	Black Nylon Radiator Screw Retainer - 1/4" Hole Size 29/32" Stem (Pack of 25)	
34	RC-668-25	Black Nylon Inner Fender Shield Blind Rivet, Head Diameter 20mm, Stem Length 18mm, Fits Into 8mm Hole (Pack of 25)	Nissan # 63844-01A00
35	RC-669-25	Black Nylon Push Type Retainer Head Diameter 20mm, Stem Length 20mm, Fits Into 8mm Hole (Pack of 25)	MI669, TMRMI669, 17216, 1860
36	RC-670-10	Black Nylon Bumper Fascia Retainer - 10mm Hole Size 28mm Stem Length (Pack of 10)	MI670, TMRMI670, 17143, D-123
37	RC-674-25	Black Nylon Phillips Screw Ret - 6mm Hole Size 11mm Stem Length (Pack of 25)	MT674, TMRMI674, 14698, 5930
38	RC-675-25	Black Nylon Push Type Retainer - 8mm Hole Size 7/8" Stem Length (Pack of 25)	MI675, TMRMI675, 13994, 5940
39	RC-677-25	Black Universal Nylon Fascia Retainer Head Diameter 1", Stem Length 23/32", Fits Into 3/8" Hole (Pack of 25)	MI677, TMRMI677, 14010, 5677
40	RC-679-25	Black Nylon Front Bumper Push-Type Retainer Head Diameter 20mm, Stem Length 13mm, Fits Into 10mm Hole (Pack of 25)	MI679, TMRMI679, 19233, 9282
41	RC-687-10	Black Nylon Bumper Cover Rivet - 9mm Hole Size 27mm Stem Length (Pack of 10)	MI687, TMRMI687, 17439, 5895
42	RC-785-25	Black Nylon Front Fender Push-Type Retainer for Acura & Honda Fits 8mm Hole Head Diameter: 20mm (Pack of 25)	
43	RC-786-10	Nylon Fender Splash Shield Retainer - 8mm Hole Size 9mm Stem Length (Pack of 10)	
44	RC-790-15	Black Nylon Fender Push Retainer - 10mm Hole 20mm Flange 18mm Stem (Pack of 15)	

TIRE REPAIR - TOOLS



#	SKU	Description	Interchangeable Part
1	HAM-100	Pencil Air Gauge 1-20psi	D-7229USA M-S917 X-909C
2	HAM-155	Straight-On Dual Foot Tire Gauge 10" 150 psi	D- 7125H M-S986C X-1045C
3	HAM-165	Premium Straight-On Dual Foot Tire Gauge 10" 150 psi	D-7262 M-986BLK X-1045BC
4	HAM-240	STRAIGHT ON High Pressure Pencil Gauge 20" 120 psi.	D-7226H X-like the 911S
5	HAM-HT190C	Color Coded Tread Depth Gauge 0-23mm / 0-32nds	
6	HAM-330-LO	6.5" Straight-On Tilt Lock Dual Foot Chuck (Closed)	D- 6172USA M-693Group X- 6568C
7	HAM-333-LO	14" Straight-On Tilt Lock Dual Foot Chuck (Closed)	D- 6174FT M-693-12Group X-6568L
8	HAM-350-LO	6.5" Premium Straight-On Tilt-Lock Dual Foot Air Chuck	D-6175USA M-693BLK X-6568BC
9	HAM-355-LO	Premium 14" Straight-On Tilt Lock Dual Foot Chuck Closed	D-6568USA M-693-12Group not BLK X - 6568BL, 17-6568BL, TMRHAM-355-LO
10	6568LC	14" Close Chrome Straight-On Tilt Lock Chuck	6568L, TI6847

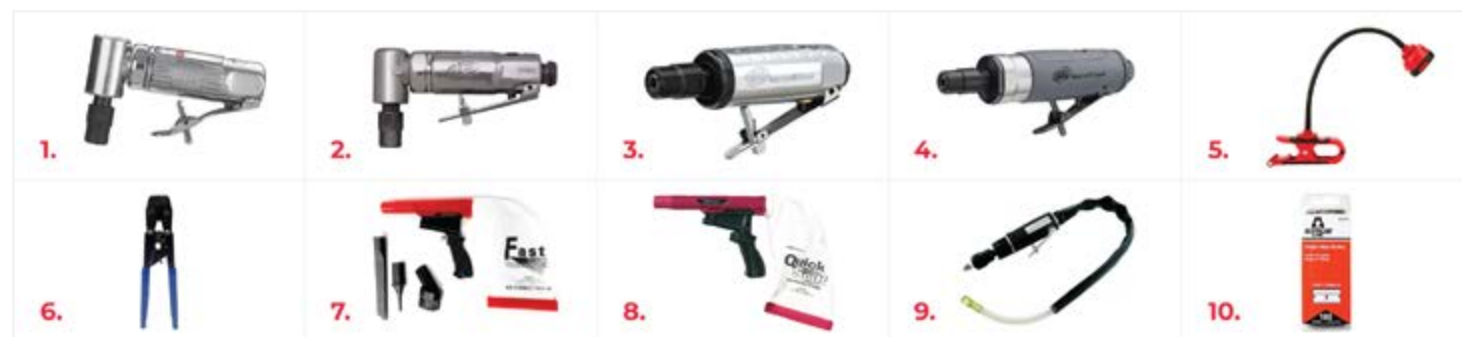


#	SKU	Description	Interchangeable Part
1	QC-138	Quick Change Adapter W/Spacer 1" X 3/8 Thread	TMRQC-19
2	14-C516	5/16" (8MM) Carbide Cutter	
3	14-C316	3/16" (4.5MM) Carbide Cutter	
4	X14345	3/16" Carbide Cutter	TMRQC-14
5	X14346	Xtra Seal 7/32" Carbide Cutter	
6	QC-516	Quick Change Adapter for 5/16" Carbide Cutter	TMRQC-23
7	QC-316	Quick Change Adapter for 3/16" Carbide Cutter	TMRWC-24
8	X14333	Xtra Seal Quick Change Adapter for 3/16" shank	
9	QC-14	Quick Change Adapter for 1/4" Carbide Cutter	TMRQC-14
10	X14330	Xtra Seal Quick Change Adapter, 5/8" x 3/8" threads	

#	SKU	Description
1	VTO3S	Stem Remover for Valve Replacement
2	HAM-31015	Chrome Coated Valve Puller/Installation Tool
3	X14314	Xtra Seal 3/16" x 1 1/2" Wood Handle Ball Bearing Stitcher
4	X14305	Xtra Seal Flexible Skiving Knife
5	X14306	USA MADE Xtra Seal Flexible Skiving Knife
6	TI60	Two Headed Valve Stem Remover
7	18147L	Valve Core Remover Long 4" Overall, 1-1/2" Shaft
8	18147	Valve Core Remover
9	14-47	Valve Core Remover
10	14-47L	Long Valve Core Remover
11	14-4456	Valve Core Remover Tool, Double End



#	SKU	Description	Interchangeable Part
1	14-833	Pistol Grip 2-Stage Rasp Tire Repair Tool	TI833, TMRTI833
2	14-4463	Split Eye Needle T-Handle with Stop	TI16, 17-217
3	14-4401	Solid Metal T-Handle Spiral Probe	TI17, 17-218
4	14-4402	Solid Metal T-Handle Insert Needle	
5	HAM-4209N01	Zinc-Alloy T-Handle with Spiral Probe (No 1)	TI17, 14-218, X14218
6	14-218P	5 1/2" Replacement Probe	
7	14-216	Pistol Grip Split Needle	
8	14-4402-NL	4.75" Split Eye Replacement Needle	
9	S-22984	Black Jack Handle Protector Made Of Durable Synthetic Rubber	TMRTC8000
10	S-14017	Plastic Handle Valve Stem Rim Hole Fitting Brush 1/2" X 6-1/2"	
11	VIMBS1	10" Valve Stem Rim Hole Brush	
12	MII60	Tire Scraper	TMRMII60
13	X14301	Xtra Seal Small Brass Sidewall Tire Brush	
14	14-966	Plastic Handle Sidewall Tire Brush	
15	14-22991	24" Tire Valve Cable Fishing Tool	TMR TI1
16	14-ERWHEEL	Eraser Wheel	



#	SKU	Description	Interchangeable Part
1	83301B	300 Series Die Grinders 0.25 HP, 1/4" 6.00MM, 21,000 rpm, 1/4 hp	TMRIRT301B
2	83302B	300 Series Die Grinders 0.33 HP, 1/4" NPT(F); 6.00MM, 20,000 rpm, 0.33 hp	
3	83307B	302 Series Die Grinders 0.25 HP, 1/4" NPT(F); 6.00MM, 28,000 rpm, 1/4 hp	TMRIRT307B
4	83308B	301 Series Die Grinders 0.33 HP, 1/4" NPT(F); 6.00MM, 25,000 rpm, 0.33 hp	
5	X14923	Xtra Seal XLIGHT Clamp-On LED Work Light	
6	HC-Rachet	Hand Held Pinch Clamp Crimper	
7	X14399	Xtra Seal Quick Spiff Air Powered Vacuum with attachments	
8	X143991	Quick Spiff Air Powered Vacuum (Vacuum Only)	
9	89007	Tire Low Speed Buffer	TMRKT189007
10	66-0089	Single Edge Razor Blades .009 100 per box	ASR66-0089-DISP, TMRASR66-0089-DISP

#	SKU	Description
1	JS-96090A	7 pc Spare Tire Removal Kit
2	JS-96091	Flat Head Spare Tire Tool for Ford/GM/Dodge
3	JS-96092	Pin Head Tire Tool for Import Pickup Trucks
4	JS-96093	Hex Head Tire Tool for Dodge Full-size Trucks
5	JS-96094	12MM Square Head Tire Tool for GM and Dodge
6	JS-96095	Standard Square Head Tire Tool for Early Model Ford
7	JS-96096	Slotted Square Head Tire Tool for Dodge Durango
8	JS-96098	3/8" Square Tire Tool for Late Ford Models
9	JS-96097	7-Slot Spare Tire Tool Wall Mount



ABRASIVES

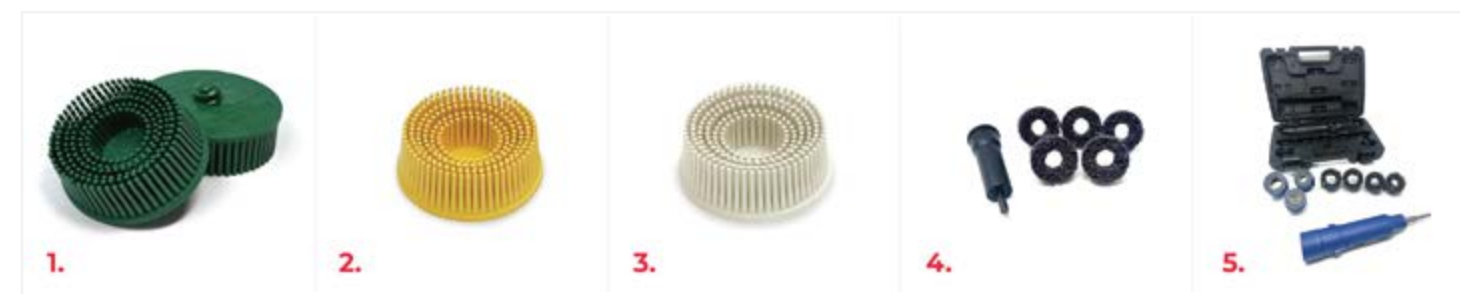
#	SKU	Description	Interchangeable Part
1	44060	4" Twisted Wire Wheel With 3/8" Hole, 20,000 RPM	Shark: 14060, Mi4225, TMRMi4225,4225
2	44164	3" Encapsulated Wire Wheel	Shark: 14164, Weiler: 35250
3	S-14034	3" (75MM) Circulars Crimped Wire Wheel 3" X 1/2" Arbor Hole Fine .008 Wire	
4	S-14163	3" (75MM) Crimped Wire Wheel 3" 5/8" Face X 1/2" Arbor Hole Fine .008 Wire	
5	S-14165	3" Twisted Wire Wheel (Heavy Duty - .014 Wire)	
6	79220	3" Knot Wire Cup Brush Extra Corse	KTI79220, TMRKTI79220
7	S-14033R	3" Wire Cup Brush, 1/4" Shaft, 10,000 RPM	

#	SKU	Description	Interchangeable Part
1	79600	Low Speed Tire Buffer	
2	14329	1/4" NPT Port Exhaust Hose For Air Buffer	TMR14-329
3	X14326K	Xtra Seal 1/2" Reversible Air Drill, 800 rpm & Exhaust Hose Kit	
4	3M-88547	3M 3" Disc Sander Pistol Grip 0.45 hp motor	
5	3M-28341	Disc Sander 28341, 2 in .3 HP 20, 000 RPM	

#	SKU	Description	Interchangeable Part
1	3M-84209	3M Scotch-Brite Hand Pads, #7447 PAD	
2	S-13016	6"X9" Fine Gray Sanding Pads	M18048-10
3	S-13017	6"X9" Medium Maroon Sanding Pads 10pk	TMRMI983
4	3M-7447B	3M Scotch-Brite Maroon Hand Pads, #7447B 6X9 Pads 60/BX	
5	3M-7447PRO	Scotch-Brite Hand Pad 7447 PRO, PO-HP, A/O Very Fine, Maroon, 6" x 9", 20/Cartron	

#	SKU	Description	Interchangeable Part
1	3M-07524	2" Bristle Disc Green, 50 Grit 10 PK	TMRMMM7524
2	3M-07525	2" Bristle Disc Yellow, 80 Grit 10 PK	TMRMMM7525
3	3M-07528	2" Bristle Disc White, 120 Grit 10 PK	
4	3M-21758	Scotch-Brite Roloc Pro Brake Hub Cleaning Disc Kit, 5 each/Case	TMRMI982
5	Cal-16	Professional Stud/Hub Brush Kit	Cal16

#	SKU	Description	Interchangeable Part
1	85096	3M 2" Hard Disc Pad	
2	14-1320	2" Surface Prep Holder with 1/4" Shank	KTI-71320, TMRKTI171320
3	14-1321	3" Surface Prep Holder with 1/4" Shank	KTI-71321, TMRKTI171321
4	85102	3M 1/4" SHANK	

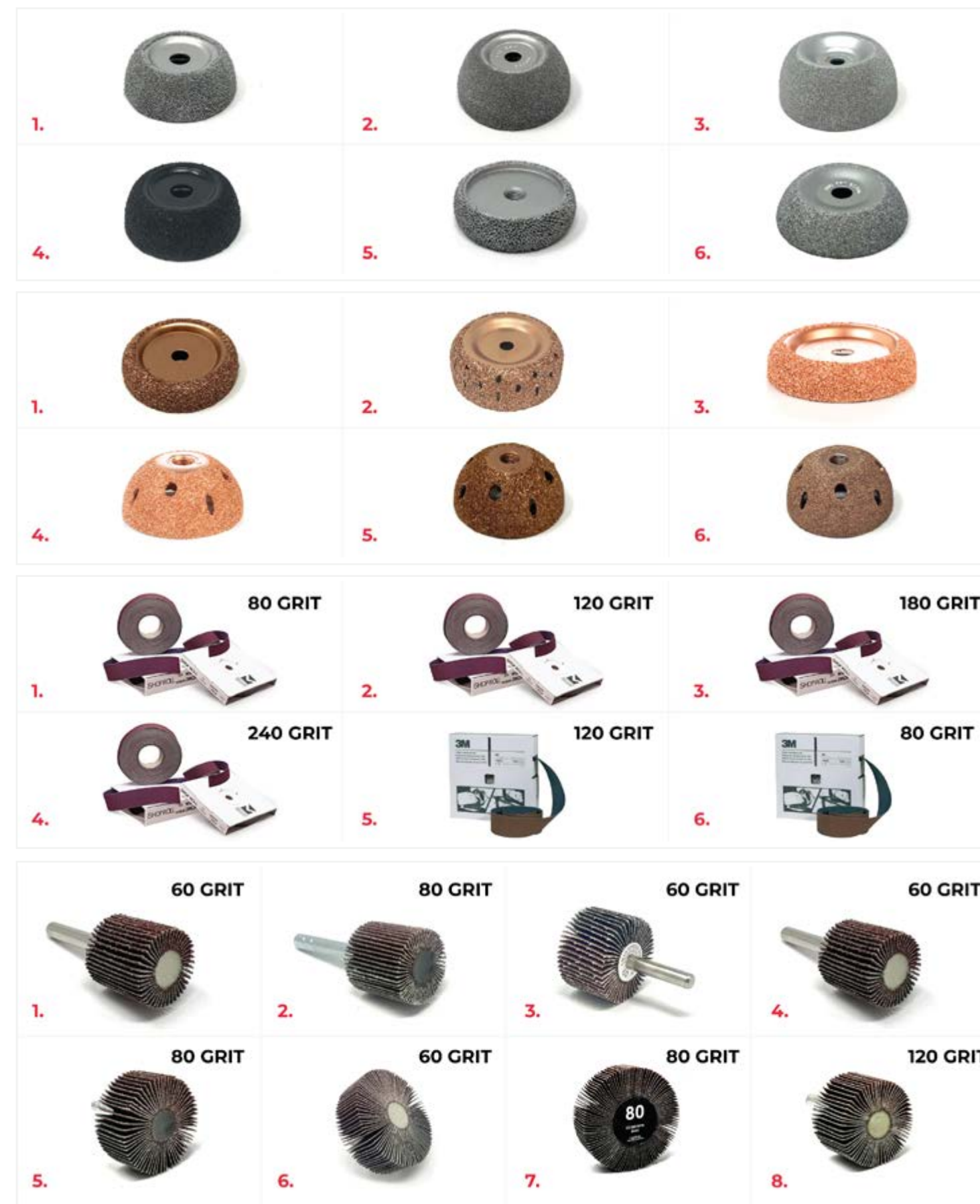


#	SKU	Description	Interchangeable Part
1	RH-102	1 3/4" X 3/4" SSG Contour Wheel 230 Grit, AH 3/8"	
2	RH-107	2.5" X 1" AH 3/8" SSG Contour Wheel	
3	RH-112	SSG Contour Wheel 3" X 1 1/4" AH, 3/8" 170 Grit	
4	RH-130	2" X 3/4" Black Contour Wheel	
5	RH-314	2" X 3/4" AH 3/8" SSG Donut Buffing Wheel	
6	S-2032	Nickel Chrome Buffing Wheel 2.5" Diameter	

#	SKU	Description	Interchangeable Part
1	BC-1	2-1/2" Tungsten Coated Buffing Wheel- 36 Grit	TMRT110, T110, 14-320
2	TCW415-36	Copper Contour Wheel 36 Grit 4" X 1.5" AH 1/2"	
3	X14320	Xtra Seal 2 1/2" Light Duty Carbide Buffing Wheel, BC-1	
4	X14359	Xtra Seal 2" Dome Economy Buffing Wheel, 60 grit	
5	210N-60	2" X 1" Copper Contour Wheel 60 Grit, AH 3/8"	
6	210V-60	Vented Copper Contour Wheel 2" X 1" AH, 60 Grit	

#	SKU	Description	Interchangeable Part
1	E-12987	Aluminum Oxide Shop Roll 80 Grit 1" X 50 Yds	
2	E-12989	Aluminum Oxide Shop Roll 120 Grit 1" X 50 Yds	
3	E-12990	Aluminum Oxide Shop Roll 180 Grit 1" X 50 Yds	
4	E-12998	Aluminum Oxide Shop Roll 240 Grit 1" X 50 Yds	
5	3M-89790	3M Utility Cloth Rolls 314D, 1" x 50 yd, P120 Grit	
6	3M-89792	3M Utility Cloth Rolls 314D, 1" x 50 yd, P80 Grit	

#	SKU	Description	Interchangeable Part
1	E-12912	Flap Wheel 1" x 1" x 1/4" Aluminum Oxide - 60 Grit	M1502, TMRM1502
2	E-12913	Flap Wheel 1" X 1" X 1/4" 80 Grit	
3	E-12915	Flap Wheel 1.5" x 1" x 1/4" Aluminum Oxide - 60 Grit	M1507, TMRM1507
4	E-12918	Flap Wheel 2" x 1" x 1/4" Aluminum Oxide - 60 Grit	
5	E-12919	Flap Wheel 2" X 1" X 1/4" 80 Grit	
6	E-12921	Flap Wheel 3" x 1" x 1/4" Aluminum Oxide - 60 Grit	M1517, TMRM1517
7	E-12922	Flap Wheel 3" X 1" X 1/4" 80 Grit	
8	E-13118	Flap Wheel 1/2" X 1" X 1/4" 120 Grit	





#	SKU	Description	Interchangeable Part
1	3M-07480	Scotch-Brite Roloc 07480 Surface Conditioning Disc - Brown - 2" - Coarse - TR - 25/BX	MI197
2	3M-07481	Scotch-Brite Roloc 07481 Surface Conditioning Disc - Maroon - Medium - 2" - TP - 25/BX	
3	3M-07485	Scotch-Brite Roloc 07485 Surface Conditioning Disc - Brown - Coarse - TR - 3" - 25/BX	
4	3M-07486	Scotch-Brite Roloc 07486 Surface Conditioning Disc - Maroon - Medium - TR - 3" - 25/BX	
5	3M-07545	3M Brake Hub Cleaning Disc Holder For 3M-21713	
6	3M-21713	Scotch-Brite Roloc Hub Cleaning Disc, 1-1/2" X 5/8", 10/Box	
7	3M-36527	2" Green Corp Roloc Disc 80 Grit 25PK	
8	S-12614	2" Green Zirconia 50 Grit Surface Conditioning Disc - BX/25	3M-01396, mmm1396, MI306, 01396, 1396, 36527, 00051131365257, TMRMI215-100
9	E-622TB	2" Surface Conditioning Disc Medium Grit Maroon (Box of 50)	05527, 07481, Mi297
10	E-630TB	3" Roloc-type Disc Coarse Brown 25/BX	Mi17 - M-7485
11	S-13005	2" Blue Surface Conditioning Disc Fine Grit 50PK	TMRMI397, Mi397, 397, TMRMI397-50
12	S-13062	2" Star-Brite Superior Life Discs; Coarse Brown - BK/50	07480,13003, Mi197
13	S-622TB	2" Surface Conditioning Disc Medium Grit Maroon - BK/50	05527, 07481, Mi297
14	S-630TB	3" Surface Conditioning Disc Coarse Brown - BK/50	0785, Mi17
15	S-632TB	3" Surface Conditioning Disc Medium Maroon - BK/50	07486, 05531, Mi27
16	42701	Cut Off Wheel 3" X 1/32", AH 3/8" 50PK	
17	42705	Cut Off Wheel 3" X 1/16", AH 3/8" - BX/50	Shark: 12705, 00051131019881, 01988, 7100229881, 60455109888, TMRCW1-50, B00IRIR9KG
18	42711	Cut Off Wheel 4 X 1/32, AH 3/8 - BX/50	Shark: 12711, CW1-50, TMRCW1-50, TMRCW15-50



#	SKU	Description	Interchangeable Part
19	3M-81396	3M Green Corps Roloc Discs, Aluminum Oxide, 2" Dia., 50 Grit, 3M (each)	
20	3M-84780	3M Scotch-Brite Clean and Strip Buffing Discs, 4", 8,000 rpm, Black/Gray	
21	S-13227	2" Aluminum Oxide discs (36 grit) (25 pack)	
22	S-13243	2" Blue Zirconia 36 Grit Disc. Box of 50	MI203, TMRMI204-50
23	S-16206	2" Purple Strip Away Disc twist to lock style 5PK	
24	S-16207	3" Purple Strip Away Disc twist to lock style 5PK	
25	S-43221	2" Aluminum Oxide Surface Conditioning Discs 36 Grit - BX/50	MI215
26	S-6205	5PK 2" Black Strip/Brite pads with Twist to lock backing	TMRMI577-25
27	S-6305	5PK 3" Black Strip-Brite pads with Twist to lock backing	07461, 7461, 89498, TMRMI579-25
28	E-13062	2" Superior Life Discs; Coarse Brown (Pack of 50)	07480,13003, Mi197
29	E-43221	2" Aluminum Oxide Surface Conditioning Discs - Quick Change 36 Grit - BX/25	MI215
30	E-43222	2" Aluminum Oxide Surface Conditioning Discs - Quick Change 50 Grit - BX/25	
31	E-43223	2" Aluminum Oxide Surface Conditioning Discs - Quick Change 80 Grit - BX/25	
32	E-43224	2" Aluminum Oxide Surface Conditioning Discs - Quick Change 120 Grit - BX/25	
33	E-44227	3" Green Zirconia 50 Grit Disc 25PK	TMRMI303-25
34	E-43220	2" Quick Change Aluminum Sanding Disc 24 Grit	
35	E-12615	2" Green Zirconia Surface Conditioning Disc 80 Grit 50PK	
36	14-35066	White Tire Buffing Stone 40MM X 6MM Shaft (1.574" X .25")	



WHEEL ALIGNMENT

Systems and spare parts to align wheels on cars, trucks, and trailers. We make our wheel clamps in-house, as well as many of our accessories. The Tru-Line alignment systems are also 100% USA-Made.

LASER SYSTEM

WHEEL CLAMPS



Wheel Alignment

Proper wheel alignment ensures optimal drivability by keeping your tires lasting longer, resulting in a smoother drive. Keeping trucks and trailers in alignment prolongs tire life, which equals money - bottom line!

Explore our selection of portable, fast, and user-friendly alignment systems, including the TLT-12, TLT-12 Deluxe, and TL-12 models. These systems allow you to align your car and light trucks effortlessly, no matter where you are, thanks to their convenient accessories. We take pride in offering Tru-Alignment systems that are 100% manufactured in the USA.

At MT-RSR, we specialize in under-car equipment components. We are dedicated to serving auto and tire shops nationwide, and our commitment to excellence is evident in every aspect of our products. From our skilled employees to our top-quality materials and cutting-edge machinery, we are devoted to delivering superior products that reflect our values.



What Are Camber Bolts?

Discover the versatility of camber adjustment bolts, designed with eccentric features to effortlessly modify your vehicle's camber angle. These bolts provide a convenient solution to fine-tune the vertical alignment of your wheels. Whether you need to correct alignment issues caused by suspension damage or desire a customized camber angle for aesthetic or performance enhancements, camber bolts are your go-to solution. Camber bolts offer a straightforward yet highly effective method to eliminate excessive leaning on lowered vehicles. Unlock a range of benefits, including extended tire lifespan and enhanced handling performance.

TIRE CHANGERS



Your everyday needs for any shop. From the tools it takes to make a mess to the supplies you need to clean it up, browse our selection of commonly needed supplies. Tools, TPMS sensors, safety, abrasives, and more are at your fingertips.

NYLON HEADS >>>

“Your #1 equipment parts experts”

01.
Top-Notch Support

Our team delivers expert support & provides clients with multiple video tutorials and Shop Talk Blogs.

02.
Next-Day Shipping

Shop our 1000+ SKUs that are in stock, available for next-day shipping on select orders.

03.
Satisfied Or Refunded

We believe in customer satisfaction; if a client is not satisfied with their product, we offer full refunds.

USA MADE
Mount/Demount Head

Purchasing USA MADE Products Just got easier!

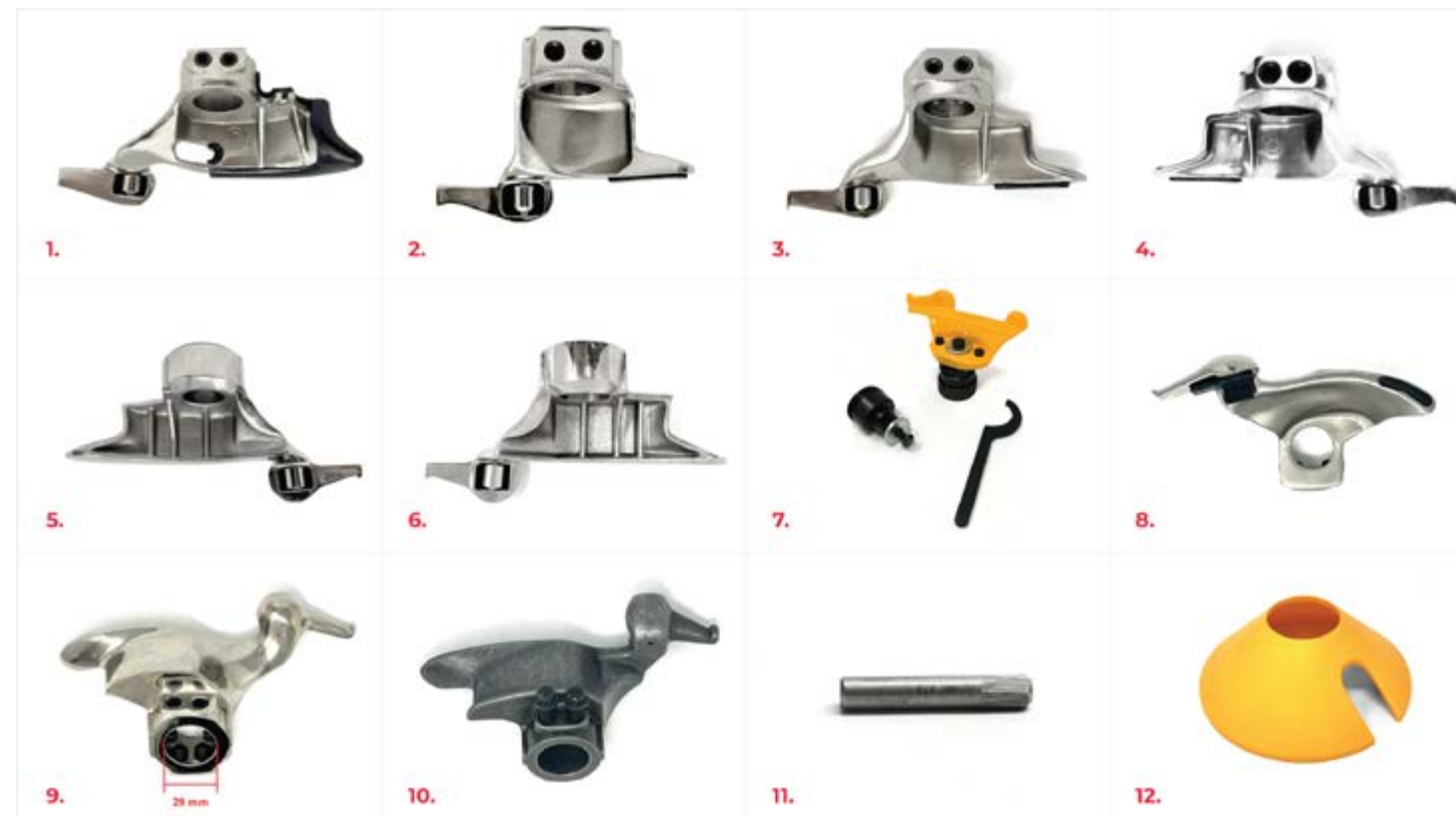


VALVES & SPOOLS



#	SKU	Description	Interchangeable Part
1	C-81986	4 Way Valve Housing for Coats No Spring - OEM Body Style	8181986, 181986, TC181986, 630V, TMRTC181986
2	81986	4 Way Valve Housing for Coats No Spring	8181986, 181986, TC181986, TMRTC181986
3	C-184369	4 Way Air Valve With Internal Centering Spring- OEM Body Style	Other# TC184369, TMRTC184369, 184369, BW-1236-91, 631VY, Coats # 8184369
4	184369	4 Way Air Valve With Internal Centering Spring	Other# TC184369, TMRTC184369, 184369, BW-1236-91, Coats # 8181986
5	C-184878	Bead Loosener 4-Way Valve With Centering Spring For Coats Tire Changer	184878, 8184878, BW-1248-78
6	AAA-81881	AAA Control Valve Bead Loosener (Spring Center) (8185581)	Coats # 8185581
7	81881	Control Valve Bead Loosener (Spring Center) (8185581)	Coats # 8185581
8	81885	Control Valve for Robo Arm (8185585)	
9	81995	Coats 4-Way Piloted/Slave Valve Housing	8181995, 181995, TC181995, TMRTC181995
10	SPOOL369	Spool for the 184369	1814369X
11	SPOOL986	Spool for the 81986	8181986X
12	C-85606398R	Coats Air Motor Exhaust Valve Rebuild Kit	
13	243020	Tire Changer Blast/Dump Valve For Hofmann, Corghi and MTS24	2201129, 243020, 900243020, BW-7001-05
14	199671	1/4 " Metal Quick Release Valve/Dump Valve	
15	TC9596	Tire Changer O-Ring Replacement Kit (Pack of 6)	TC9596, TC 9596, TC-9596, TSF568-116

METAL HEADS



#	SKU	Description	Interchangeable Part
1	26252	Sicam/Bosch/M&B Stainless Steel M/D Head	
2	184037	Corghi/Hunter/Cemb/Coats/EarlyHoffman Stainless Steel Mount/Demount Head for Motorcycles	
3	184387	Corghi/Hunter/Cemb/Coats/Early Hoffman Mount Demount Head (Set Screw on Side)	
4	184388	Corghi/Hunter/Cemb/Coats/EarlyHoffman Mount Demount Head (Set Screw in Front)	
5	1827888	Coats Metal Mount/Demount Head with Taper Hole	TC182788, TC 182788, 182788, 8182788, 8182753, 81827881, 8183781, 182026, 8182026, 8182753, TMRTC182788, Coats # 8182788, 8182753, 182788, 182753
6	1834299	Coats Metal M/D Head With Round Hole	Ref 322003, 2202073, 8183429, 8182026, 183156, tc183429, 183429, 2201432, 8183152, 900258458, 258458, 183429, 182026, 183152
7	304G67A	Quick Change for Snap on/Hofmann/Accuturn/JB M/D Head	Accuturn # 20024335, Hofmann #24335, John Bean and Snap-On 24335
8	329G95A	Metal Mount/Demount Head for Snap-On, John Bean 33MM	Snap On: ST4026251, FMC: 87083, John Bean: 0011065, 11065, Hofmann: EAA0329G95A
9	532736-29MM	29MM Metal/Steel Head For Ranger/Sicam/Bosch	
10	C-182788	Coats Stain Steel Mount/Demount Head for Tapered Shaft (Duck Head)	TC182788, TC 182788, 182788, 8182788, 8182753, 81827881, 8183781, 182026, 8182026, 8182753, TMRTC182788, Coats # 8182788, 8182753, 182788, 182753
11	103232	Cone Cover for Corghi 120MM	Ref 103232A, 4-103232A, 9004-103232, 9004103232
12	76079	Roll Pin For TC20011064 Mount/Demount Head Insert - Tire Repair	27040080, RP27040080, TMRRP27040080

INSERTS FOR HEADS



#	SKU	Description	Interchangeable Part
1	2684	Rectangular Inserts for Leverless Head Hunter/Corghi - PK/10	Hunter Part # 20-2684-3, RP11-8-11400293, TC2684, TMRTC2684
2	2685	Triangle Insert for leverless Hunter/Corghi (Pack of 10)	TC2685, TMRTC2685
3	2684Y	Yellow Rectangular Inserts for Leverless Head Hunter/Corghi - PK/10	Hunter Part # 20-2684-3, RP11-8-11400293, TC2684, TMRTC2684
4	H-10326	Lever-less Mount Head Inserts Right Side V3	Corghi For V3 Leverless Tool Head, Hunter RP11-8-1110326S, Sice Models S 45TL, S48 TL, S 48PL, S100 PL
5	19305	Coats Tail insert for lever-less Tire Changer - 5PK	89233409, 9233409, 84393753, 83033278
6	19306	Coats Front/hook inserts for lever-less Tire Changer - 5PK	89233409, 9233409, 84393753, 830332786
7	24716	Yellow Nylon Insert For Coats/Corghi Round Hole and others	8-11100106 , 254341A, 100106, 3006689, 83006689, ti254341a, 254341A, 25434
8	25434-BLK	Black Corghi/Coats Metal Head Inserts - 10PK 8-11100106, 100106	8-11100106 , 254341A, 100106, 3006689, 83006689, ti254341a, 254341a, TMRTi254
9	25434	Yellow Corghi/Coats Metal Head Inserts - 10PK 8-11100106, 100106	8-11100106 , 254341A, 100106, 3006689, 83006689, ti254341a, 254341a
10	26253	Tail Inserts for Many Make and Model Tire Changers	8-11100107,801258898, 063906300, 20010236, 100107
11	27636	Ranger Tire Changer Front/Nose Inserts 5PCS	5327636
12	28119	Ranger Tire Changer Back/Tail Inserts 5PK	5328119
13	30014	Plastic Protector For Import Tire Changer 10PK	
14	36650	Front/Nose inserts for Cemb, Hunter and others 10pk	
15	36992	Tail/Back Insert for Cemb, Hunter and others 10PK	
16	101608	Protectors (Pack of 5) TC101608	TMR101608, TC101608, 100798 (single insert), 101608, 1695101608810, 1695101608 (set of 5 inserts).
17	102725	Bosch, Sicam Accuturn Black Rear Mount Demount Protector	OEM #102725 Accuturn, ADG, Bosch, OEM # 169510725 Sicam



#	SKU	Description	Interchangeable Part
18	136502	Rear Plastic Inserts for Atlas and others 5PK	ATEAPP-3013650, 3013650, ATETAXP-MHPP, MHPP
19	113G61AY	Slotted Yellow Plastic Inserts for Hofmann, John Bean and Snap-On 10PK	ST0011064, ST4024181, EAC0078G50A, EAA0247G15A, EAC0060G76A
20	47G15A-10	Black Long Protector for M/D Head (Pack of 10)	247G15A, 247G15A-10, TC247G15A-10, TMRTC247G15A-10, EAA0247G15A, ST0011064
21	24715	Yellow Long Protector for M/D Head (Pack of 10)	TC247G15A-10, EAA0247G15A, ST0011064, EAC0060G76A, 60G76A
22	11400096	Hunter Wheel Protector Kit Head/Tail (Pack of 10)	RP11-8-11400096, RP11-811100303S, 8-11400096, TMRT11400096
23	1489-1167	Mounting Inserts for Corghi Master 2002-UP 10PCK (5 of each insert)	461489A, 900461489, 461489)
24	78G13A	Tail Insert for Metal Head 329G95A 5pk	EAC0078G13A, 0078G13A
25	400369	Hunter Insert TCX SQ PK20..Hunter and CEMB	RP11-8-11100369
26	T114096	Front Insert for Hunter 500 Series (Pack of 10)	RP11-8-11400096, RP11-811100303S
27	T114636	Tail Inserts Hunter and others	RP11-8-11400096, RP11-811100303S, T14636-10
28	9837000	Plastic inserts Tail/back Piece for Ravaglioli All Next Gen Model and More (5PK)	
29	800A8	Plastic inserts Nose/Front Piece for Ravaglioli All Next Gen Model and More (5PK)	
30	102G90A	Plastic tail/back insert for Hofmann Tire Changer (Pack of 10)	
31	96G64A	Plastic front/nose insert for Hofmann Tire Changer (Pack of 10)	
32	T1182963	Coats SS M/D Head Insert (Pack of 12)	T1182963, T1 182963, 8182961, 8182963, 182961, 182963
33	28389	Ranger Tire Changer Front Insert (Pack of 5)	Ranger: 5328389

CYLINDERS & SEAL KITS

#	SKU	Description	Interchangeable Part
1	83811	Table Top Cylinder Seal Kit for Coats 5030, 5060 or 5070	T1183811, T1 183811, 183811, 8183811, 8183772, 8182080, TMRT1183811
2	181629	Replacement Table Top Cylinder Shaft	Ref PN 8181629, 181629
3	81627	Replacement Cylinder Sleeve/Barrel for Table Top Coats 50 & 70 Series	8181627, 181627
4	81622	Coats Cylinder End Cap for Table Top - Bottom	181622
5	81620	Front Cap or Top Cap Table Top Cylinder	1818620 181620
6	90URE	Lip Washer for the 83811	TMR90URE
7	18207	Bead Breaking Cylinder Seal Kit	TMRT1182079, Replacement for Part Number 182079 & 8182079, Replacement for Alternate Part # T1182079
8	183519	Coats Rim Clamp Replacement Shaft Bead Loosener	
9	81574	Replacement Cylinder Sleeve/Barrel for Bead Breaker Coats 50 & 70 Series	8181574
10	182550	Pivot Pin for Bead Loosener Rod (old style Round Foot Operated)	8182550
11	67837	Pivot Pin for Bead Loosener Rod Staggered Diameter	8185634, 185634, 85607837
12	238548	Turn Table Repair Kit, Corghi	Corghi 238548 , 900238548
13	T1115	Coats Bead Breaker Kit	TMRT1115, Coats OEM: 8181163, 8181642, Corghi OEM: 223810, 238212
14	T1181162	Coats RC-15 Table Top Cylinder Seal Kit	8181162, 181162, T1181162, TMRT1181162
15	81162	Coats Tire Changers Table Top Cylinder	181162, 8181162
16	12638	7" Bead Loosener Cylinder Seal Kit for Coats	182638, 8182638
17	4019315	Bead Breaker Seal Kit for Accu-Turn 3400 to 5400	24019315SK, ACC24019315SK, 4019315, 0001470, 0001415, 0001414, 7020141, 0010597, 0009279, 0001684, 0001683
18	TC182034	Coats Rotary Coupling Assembly	Coats- 8182619
19	81715	O Ring Repair set (81712 Qty (3) + 81713 Qty (1)) for Coats Table Top Tire Changer	
20	81713	Coats Tire Changer Rotary Coupling Large O-Ring	181713, 8181713, TC181713, TMRTC181713
21	81712	Coats Tire Changer Rotary Coupling Small O-Ring	181712, 8181712, TC181712, TMRTC181712, TMR81712
22	15905	2.5 Quart Titan Air Hydraulic Pump 10,000 PSI	
23	HP-1102N	Air-Hydraulic Pump 10,000 PSI	
24	HP-4800N	Air-Hydraulic Pump 4800 PSI	
25	21200	Automatic Air Filter Regulator Lubricator Tall	
26	126381	Micro Rib Poly V-Belt	



TIRE CHANGERS

AFTERMARKET REPLACEMENT PARTS



Elevate Your Tire Changer Performance with MT-RSR's manual machine replacement parts and mounting compound accessories. When it comes to maintaining and optimizing your tire changer, trust MT-RSR to deliver top-quality solutions. Our catalog boasts an extensive selection of manual machine replacement parts and essential mounting compound accessories, designed to keep your equipment running smoothly and efficiently.

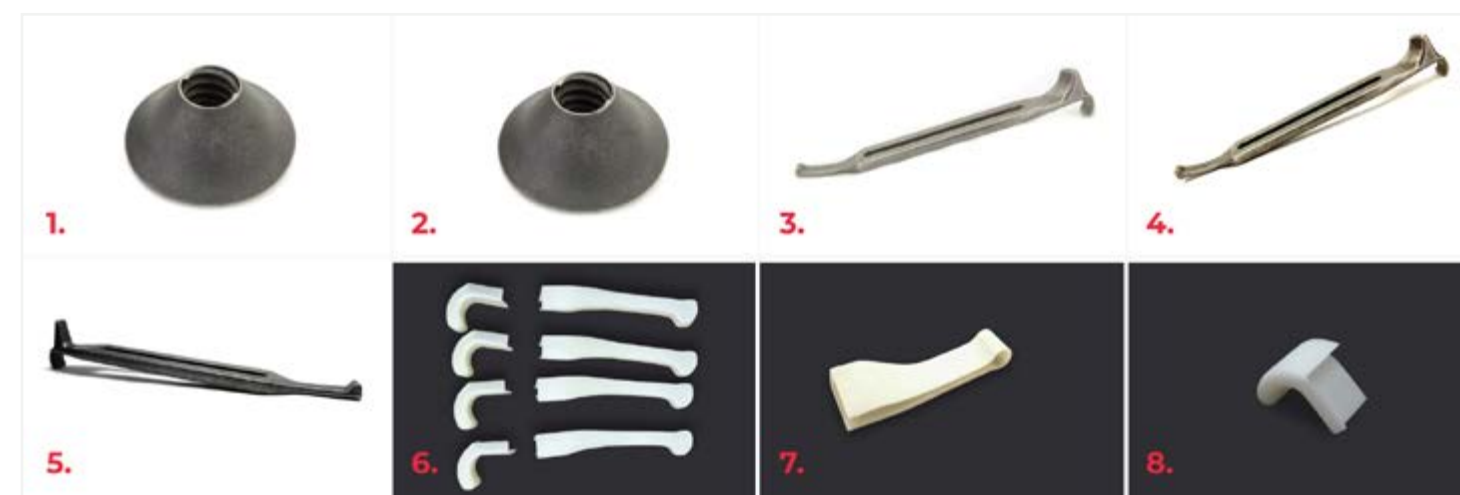
Explore our range of manual machine replacement parts meticulously crafted to ensure seamless operation. From precision-engineered components to durable replacement pieces, MT-RSR has you covered. Say goodbye to downtime and hello to enhanced productivity.

MOUNTING COMPOUND ACCESSORIES

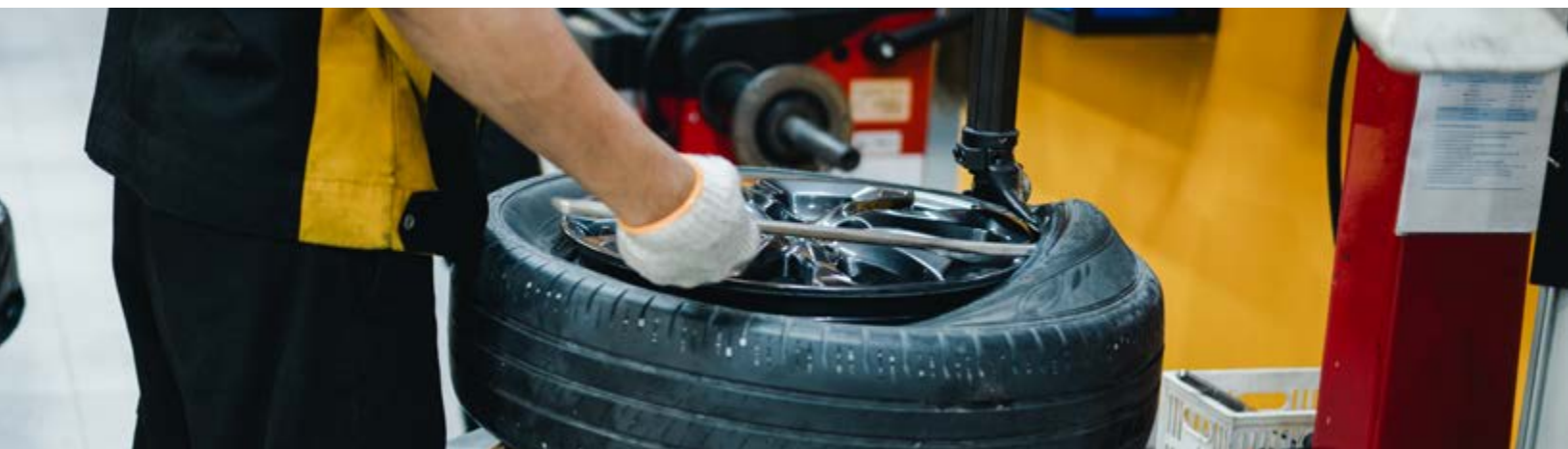


#	SKU	Description	Interchangeable Part
1	7259	Straight Top Lube Bucket (Red)	LB106259, LB 106259, 8106259, 106259, TMR106259
2	7572	Angled Top Lube Bucket (Red)	LB106572, LB 106572, 8106572, TMR106572
3	7550	Tire changer paste lube bucket bracket	
4	7559	Lube bucket Bracket	
5	C-85610105	Swing Arm Tire Changer Storage Cabinet	8113621, 113621
6	20415	10" Truck Tire Paste Brush Wood Handle	TI6350, TMRTI6350
7	TI1506	Angled Applicator Brush	30512, 96517, VT-930
8	X14381B	Replacement Brush/Lid For Cement Can	TI265, TMRTI265
9	TI00050	Tire Swab for Lube Bucket	TI50, TI 50, 000491, 8000491, 4215799, 8000491, BL8000491
10	X14378L	Xtra Seal 15" (381mm) Cotton Tire Swab	TI35
11	JTM10129	Murphys 8LB. White Low Profile Tire Paste	JTMF10129
12	X14700	Euro-Paste Mounting Compound with Rust Inhibitors 6.5 lb bucket	
13	X14725	25 lb. MURPHY'S Mounting Compound	

MANUAL MACHINE REPLACEMENT PARTS



#	SKU	Description	Interchangeable Part
1	433	Coats 8108276 Hold Down Cone	MT-RSR# 108276, COATS# 8108276 000433 & 800433, Hofmann Monty # 66667, FMC# 66667, TC108276, TMRTC108276
2	108276	Coats Hold Down Cone	TC108276, TMRTC108276
3	768	Coats Combo Tool	Coats: 8000768, John Bean / FMC / Hofmann: 66679, Hunter: RP6-1828, CT768, TMRCT768
4	66679	Hoffmann and FMC Combo Tool	
5	85609418	Special Combo Tool	
6	107790	Coats Mount Demount Bootie Kit for Combo tool Coats # 8000768	
7	TI00030	White Demount Booty	TI30
8	TI00055	White Mount Booty	



SWITCHES & GAUGES



#	SKU	Description	Interchangeable Part
1	21523	Coats and Corghi Tire Changer Forward Reverse Switch 40Amp	424796, 900424796, 435363, 900435363, 421523, 900421523, TMRSW421523
2	82958	Corghi and Coats Tire Changer Forward Reverse Switch 40 Amp	
3	400682	Motor Forward Reverse Switch for Tire Changer	8182958, COATS OEM #8182958, 182958, REPLACES HOFMANN # 4213369 5-400682, #182958, SW182958, TMRSW182958
4	86433	Old Accuturn and Some snap-on Tire Changer Reversing on/off Single Phase Switch	Snap-on- ST0016433, SW20016433, TMRSW20016433, 20016433
5	184390	Tire Changer Forward Reverse Switch 20 AMP	
6	84389	Switch for Coats 5000, 6000 and 7000 series Tire Changers (Premium version)	SW184389, SW-184389, 8182957, 8182958 184389, 8184389, BW-1243-89, 85607129, 85607250, 81827336
7	AG107985	Coats Air Gauge for Tire Changers	AG107985, 107985, 8107985, TMRAG107985
8	107985	Coats Air Gauge for Tire Changers	AG107985, 107985, 8107985

LUG NUTS

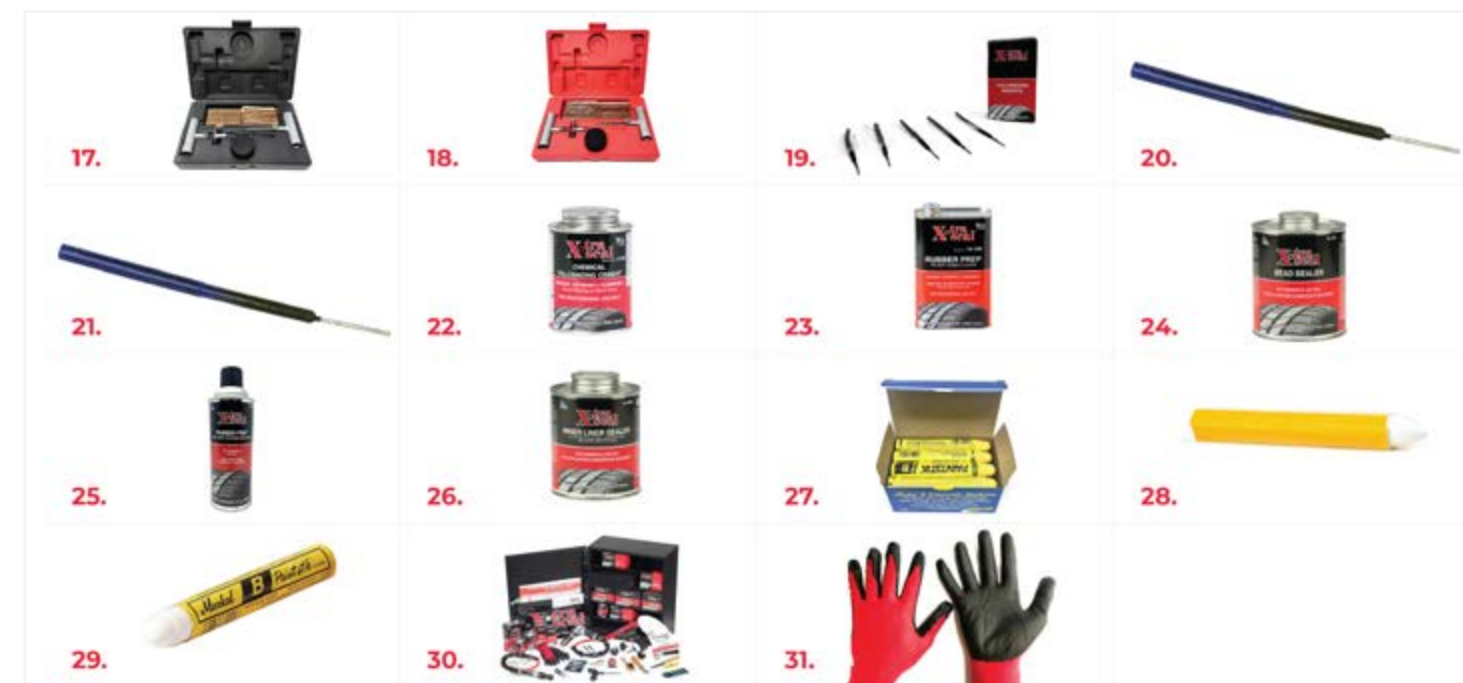


#	SKU	Description	Interchangeable Part
1	94011	Bulge Acorn 14MMX1.50 13/16 HEX-008-B (each)	
2	94012	Bulge Acorn 14MMX2.00 13/16 HEX-288 (each)	BD142978; 4L3Z-1012-A; 7L1Z1012A, 611-288
3	WN-1904S	Acorn Lug Nut 1/2 Thread, 3/4 Hex, 1.38" Height	
4	WN-1907S	Acorn Lug Nut Metric 12MM Thread, 3/4 Hex, 1.38" Height	
5	WN-196-B	Flange Nut M14-2.0 Black	
6	WN-1704S	Bulge Acorn Lug Nut Chrome 1/2"-20	
7	WN-236	Lug Nut M14-1.5 Flattop-22mm Hex, 44.5MM - 1709DL	611-236, 611 236, 559-112, 9596070
8	WN-236-B	Flattop Nut M14X1.5, 22 Hex	611-236, 611 236, 559-112, 9596070
9	WN-246-B	Wheel Nut M14-1.5	2C2Z1012AA, BD142983, 611-246
10	WN-288-B	Dometop Nut M14-2.0 - 21 Hex	BD142978; 4L3Z-1012-A; 7L1Z1012A, 611-288
11	WN-303-B	Cap Nut M12-1.5 Chrome	
12	WN-330-B	Cap Nut M14-1.5 Chrome	
13	WN-76-B	Lug Nut M12-1.25 Acorn	

TIRE REPAIR



#	SKU	Description
1	7329	Base for Tire Spreader 7828
2	7828	Tire Spreader, adjustable from 0-10"
3	14324	1.5" Long Threaded Arbor Adapter 3/8" Threads
4	WL-8473	LED Work Light Assembly w/Mounting Bracket 650 Lumens
5	X12-331	Orange Bowtie, 2 1/4" x 3/8", 5-PLY 50/box
6	X11712	Xtra Seal 2 1/4" x 4" (57 x 102) Radial 12, 1 Ply (Box of 10)
7	X11002	Xtra Seal 2 1/4" (57mm) Medium Round Feather-Edge (Box of 30)
8	X11116R	Square Universal Red Poly, 2 1/8" (54MM) Tire Repair Patch 30 per box
9	X11311	Xtra Seal 2 1/4" (57mm) Medium Square Euro-Style (Box of 50)
10	X11321	Xtra Seal 1 5/8" (41mm) Small Round (Box of 30)
11	X11322	Xtra Seal 2 1/4" (57mm) Medium Round (Box of 25)
12	X13672	Xtra Seal Patch: 1 5/8" (42mm), Stem: 3/16" (5mm) (Box of 24)
13	X13673	Xtra Seal Patch: 2 1/8" (55mm), Stem: 1/4" (7.5mm) (Box of 24)
14	X13675	Xtra Seal Patch 2 1/8", for 3/8" Injury (Box of 16)
15	VRA65-TUB	Large Round All Purpose Tire Patch 2-1/2" 65MM USA Made 50pcs/Tub
16	X14318R	Xtra Seal In-Line Air Regulator, 1/4" npt



#	SKU	Description
17	TRK-BLK	Tire Repair Kit - Black
18	TRK-RED	Tire Repair Kit - Red
19	X13620	Lead Wire Insert for 1/4" (6mm) Injury (Box of 20)
20	X13621	Xtra Seal Lead Wire Insert for 3/16" (4.5mm) Injury (Box of 20)
21	X13623	Xtra Seal Lead Wire Insert for 3/8" Injury
22	X14008	Xtra Seal 8 oz. (236ml) Vulcanizing Cement, Flammable
23	X14100	Xtra Seal 32 oz. (945ml) Buffing Solution
24	X14101	Xtra Seal 32 oz. (945ml) Bead Sealer
25	X14102	Aerosol Buffing Solution
26	X14128A	Xtra Seal 16 oz. (472ml) Inner Liner Sealer, Flammable
27	MK-80221	Yellow MARKALL Paint Stick, 3/4" Round - PK/12
28	X14553	Xtra Seal White Paint Stick, 1/2" Hex (Pack of 12)
29	X14554	Xtra Seal White MARKALL Paint Stick, 3/4" Round (Pack of 12)
30	X14605	Xtra Seal Tire Repair Cabinet with H.D. Product Assortment
31	X14803	Xtra Seal Nitrile Coated Red Mechanics Glove (Each)

TIRE CHANGER MISC. >>>



Wide Plastic Protector for
bead breaker shovel yellow

SKU: 31158Y

BEAD BREAKERS



#	SKU	Description
1	GAI-BB38L	38L Bead Blaster
2	GAI-BB5A	5 Gal Automatic Bead Booster
3	GAI-BB5M	5 Gal Manual Bead Booster
4	GAI-BBH	Bead Bazooka Storage and Inflation Stand
5	GAI-BB10L2	Bead Bazooka with 2" RAR Valve 10 Liter Gen 2
6	GAI-BB6L2	Bead Bazooka with 3" RAR Valve 6 Liter Gen 2
7	GAI-GAVTK	Booster Upgrade Kit For Manual Bead Seater
8	GAI-12941R	Gaither 1.5" RAR Bead Seater Nozzle w/ Trigger & Handle - 12941R
9	GTJ-01	TRAC Tire Jack
10	21010	Passenger O-Ring Style Bead Seater 14" - 15"
11	22000	Truck O-Ring Style Bead Seater 16.5" - 17.5"
12	22020	Truck O-Ring Style Bead Seater 19.5"
13	22040	Truck O-Ring Style Bead Seater 22.5" - 24.5"

JAWS



#	SKU	Description	Interchangeable Part
1	18412-4	Coats Adjustable 3 Button Rim Clamp Jaw (Range: 6" - 22") Set of 4 Coats 8184926	Coats #818948
2	18412-4B	Set Of 4 Adjustable 3 Button Rim Clamp Jaw (Range: 6"- 22") with 4 Buttons.	OEM Coats #818948
3	18495-4	Coats Extension Clamp Jaw (Range 18" - 28") Set of 4	#8184327
4	18495-4B	Set of 4 Extension Clamp Jaws (Range: 18"-28") with 4 Buttons.	OEM Coats #8184327
5	18426-4	Coats Adjustable 2 Button Rim Clamp Jaw (Range: 13" - 24") Set of 4	#81822474
6	18426-4B	Set of 4 Adjustable 2 Button Rim Clamp Jaws (Range: 13"- 24") with 4 Buttons.	OEM Coats #81822474
7	182247-4	Coats Adjustable 2 buttons Rim Clamp Jaw (Range: 6" - 20") (Set of 4)	Coats #8182250, 182250, TC182250, TMRTC182250
8	182247-4B	Set of 4 Adjustable 2 Button Rim Clamp Jaw (Range: 6"- 20") with 4 Buttons.	TC336742-4, 336742, 323156, 8181677, 181677, TC181677-4, 336742
9	82250	Coats Button For Clamping Jaws	TC183604, 183604, 183604-10, TC183604, TC 183604-10, 8183604, 8435203, TMRTC183604
10	RC1-4	Coats Tire Changer Clamp (4PK) 8181677	ST4027645, TMRST4027645
11	TC183604	Quilted Clamp Socks (Pack of 10)	Similar to COATS 82006393, Ranger: 5327081, Hunter: 8-11100358, RP11-8-11100385, 11-8-11100358, Alternate Part Number : 2006393, 209612, Megaplann 2006393, CEMB 2006393, Replaces COATS Part Number : 82006393, 9209612, ATEATTC-LPJP
12	TCB304-4	Jaw Protection (Pack of 4)	100816, 1695101402, 100816
13	24720	Wheel Jaw Covers for Coats Ranger and Others - Set of 4	
14	101402	Sicam Jaw Cover (Pack of 4)	8-11100108, 100108
15	100109	Rear Plastic Jaw Covers For Corghi 4Pk	
16	100108	Corghi Jaw Protector Inside Pack of 4	
17	H-100358BK	Ranger Clamp Protectors 4PK Small BLK	8500059408, 500049408, 59271
18	H-100358Y	Ranger Clamp Protectors 4PK Small Yellow	85607161, 85607108 - Black Grip Max Inserts
19	59408	Replacement grips for Coats Grip Max jaws, pack of 8	8184712, 8183248, 183248
20	716108	8PK Grip Max Coats Jaw Inserts	Snap on EAC0087G48A, Snapon 22129, Snap on ST4027591, JBC TCB7591
21	183428	Motorcycle Jaw Clamp Covers For Coats Tire Changer 4PK	5328312-4 , 5328396A , 5328234 , 5327081 , 5328312
22	87G48A	Jaw Plastic Inserts For Hofmann, Snap-On and Others 4PK	
23	28312-4	Clamping Jaw Insert Kit for Ranger R980 Tire Changers	
24	6069Y-4	Clamping covers yellow Snap-on	
25	7876Y	Plastic insert for Jaws Yellow - Pack of 4	



BRAKE LATHES

Everything a shop needs to repair or improve a brake lathe. Cones, adapter sets, chucks, and more to be able to do more with your brake lathe. Arbors, repair kits, pulleys, belts, boots, and more to get your lathe back up and running in no time. We also carry a variety of accessories like silencers and chip shields. As always, a majority of the parts are USA-Made and every part is high quality.

CONES & ADAPTER SETS

SET INCLUDES	
SKU	Description
7193	5 3/4" Diameter Bell Clamp 1" Bore (2X)
7490	Small Bell Clamp 4 1/2" - 1" Bore (2X)
5030	Double End Adapters 1" Bore - Range: 1.32" - 2.89" (Set of 5)
7903	Cone 1" Bore - Range: 1.187" - 2.250"
5040	Spacer 1" Bore x 1" Length
7110	Spring for Ammco
10073	Centering Cone Range: 2.025" x 3.99" - 1" Bore (2X)
6032	Large Ventilated Disc Rotor Silencer Range: 10-12" Diameter
6039	Small Black Solid Rotor Silencer Band for Use on Thin Rotors 6-9" (2 Pcs. pack)

SET INCLUDES	
SKU	Description
10072	Rotor Hub Base
10073	Centering Cone Range: 2.025" x 3.99" - 1" Bore
10074	Spacer 2" Length and 1" Bore (2X)
10075	Flange Plate
10079	Centering Cone Range: 1.84" x 2.20" - 1" Bore
10080	Centering Cone Range: 2.12" x 2.48" - 1" Bore
10081	Centering Cone Range: 2.38" x 2.75" - 1" Bore
10082	Centering Cone Range: 2.65" x 3.03" - 1" Bore
10083	Centering Cone Range: 2.93" x 3.30" - 1" Bore
10091	Spring Adaptek Style System
9800	Rotator Spring Silencer Assembly
6041A	Clip on Disk Silencers
5030	Double End Adapters 1" Bore - Range: 1.32" - 2.89"

SET INCLUDES	
SKU	Description
10072	Rotor Hub Base
10073	Centering Cone Range: 2.025" x 3.99" - 1" Bore (2X)
10074	Spacer 2" Length and 1" Bore
10075	Flange Plate
10079	Centering Cone Range: 1.84" x 2.20" - 1" Bore
10080	Centering Cone Range: 2.12" x 2.48" - 1" Bore
10081	Centering Cone Range: 2.38" x 2.75" - 1" Bore
10082	Centering Cone Range: 2.65" x 3.03" - 1" Bore
10083	Centering Cone Range: 2.93" x 3.30" - 1" Bore
10091	Spring Adaptek Style System
9800	Rotator Spring Silencer Assembly
6041A	Clip on Disk Silencers
5030	Double End Adapters 1" Bore - Range: 1.32" - 2.89" (Set of 5)
10078	Light Truck Flange Plate
10084	Centering Cone Range: 3.20" x 3.58" - 1" Bore
10085	Centering Cone Range: 3.48" x 3.85" - 1" Bore

SET INCLUDES	
SKU	Description
10074	Spacer 2" Length and 1" Bore (2X)
10091	Spring Adaptek Style System
10075	Flange Plate
10072	Rotor Hub Base
10073	Centering Cone Range: 2.025" x 3.99" - 1" Bore
10081	Centering Cone Range: 2.38" x 2.75" - 1" Bore
10083	Centering Cone Range: 2.93" x 3.30" - 1" Bore
10079	Centering Cone Range: 1.84" x 2.20" - 1" Bore
10082	Centering Cone Range: 2.65" x 3.03" - 1" Bore
10080	Centering Cone Range: 2.12" x 2.48" - 1" Bore
10078	Light Truck Flange Plate
10084	Centering Cone Range: 3.20" x 3.58" - 1" Bore
10085	Centering Cone Range: 3.48" x 3.85" - 1" Bore



SET INCLUDES	
SKU	Description
10010	Complete adaptor set for Passenger Car and Light Truck (Hubless flat Rotors) (Set)
10076	Truck Flange Plate
10077	Truck Flange Plate
10086	Centering Cone Range: 3.74 X 4.13" - 1" Bore
10087	Centering Cone Range: 4.03" X 4.40" - 1" Bore
10088	Centering Cone Range: 4.30" X 4.68" - 1" Bore
10089	Centering Cone Range: 4.58" x 4.95" - 1" Bore
10090	Centering Cone Range: 4.85" x 5.23" - 1" Bore
10027	Centering Cone Range: 5.125" x 5.50"
5030	Double ended Adapter 1" Bore Range 1.32" - 2.89" (5 pcs Set)
5038	Double ended Adapter 1" Bore - Range: 2.828 - 3.560 Truck Set ref. 5036 + 5037
9800	Rotor Spring Silencer Assembly (Length: 25")
6041A	Clip on Disc silencer
6037	2 3/4" Truck Drum Silencer Band Extra Long (Length: 6')
6030	Natural Rubber Adjustable Ventilated Rotor Silencer Band-Fits Any Vented Rotor

SET INCLUDES	
SKU	Description
10074	Spacer 2" Length and 1" Bore (2X)
10091	Spring Adaptek Style System
10075	Flange Plate
10072	Rotor Hub Base
10073	Centering Cone Range: 2.025" x 3.99" - 1" Bore
10081	Centering Cone Range: 2.38" x 2.75" - 1" Bore
10083	Centering Cone Range: 2.93" x 3.30" - 1" Bore
10079	Centering Cone Range: 1.84" x 2.20" - 1" Bore
10082	Centering Cone Range: 2.65" x 3.03" - 1" Bore
10080	Centering Cone Range: 2.12" x 2.48" - 1" Bore

SET INCLUDES	
SKU	Description
5036	Double End Adapters 1" Bore - Range: 2.828" - 3.185"
5037	Double End Adapters 1" Bore - Range: 3.203" - 3.560"

SET INCLUDES	
SKU	Description
5031	Double End Adapters 1" Bore - Range: 1.332" - 1.670"
5032	Double End Adapters 1" Bore - Range: 1.362" - 1.710"
5033	Double End Adapters 1" Bore - Range: 1.711" - 2.073"
5034	Double End Adapters 1" Bore - Range: 2.074" - 2.440"
5035	Double End Adapters 1" Bore - Range: 2.441" - 2.89"

SET INCLUDES	
SKU	Description
10078	Light Truck Flange Plate
10084	Centering Cone Range: 3.20"x 3.58" - 1" Bore
10085	Centering Cone Range: 3.48" x 3.85" - 1" Bore

SET INCLUDES	
SKU	Description
10076	Truck Flange Plate 10076
10077	Truck Flange Plate 10077
10086	Centering Cone Range: 3.74" x 4.14" - 1" Bore
10087	Centering Cone Range: 4.03" x 4.40" - 1" Bore
10088	Centering Cone Range: 4.30" x 4.68" - 1" Bore
10090	Centering Cone Range: 4.58" x 4.95" - 1" Bore
10091	Spring Adaptek Style System
10027	Centering Cone Range: 5.125" x 5.50" - 1" Bore

SET INCLUDES	
SKU	Description
7106	Cone 1" Bore - Range: 3.421" - 4.031"
7107	Cone 1" Bore - Range: 2.89" - 3.500"
7108	Cone 1" Bore - Range: 2.328" - 2.968"
7178	Cone 1" Bore - Range: 2.606" - 3.224"
7902	Cone 1" Bore - Range: 1.250" - 1.750"
7903	Cone 1" Bore - Range: 1.187" - 2.250"
7904	Cone 1" Bore - Range: 1.703" - 2.750"
5030	Double End Adapters 1" Bore - Range: 1.32" - 2.89"
7110	Spring for Ammco
7125	Spacer 1" Bore and 1/2" Length
7492	Self Aligning Spacer
7193	5 3/4" Diameter Bell Clamp 1" Bore (2X)
7489	Small Bell Clamp 3.62" - 1" Bore
7490	Small Bell Clamp 4 1/2" - 1" Bore (2X)

SET INCLUDES	
SKU	Description
7106	Cone 1" Bore - Range: 3.421" - 4.031"
7107	Cone 1" Bore - Range: 2.89" - 3.500"
7108	Cone 1" Bore - Range: 2.328" - 2.968"
7178	Cone 1" Bore - Range: 2.606" - 3.224"
7902	Cone 1" Bore - Range: 1.250" - 1.750"
7903	Cone 1" Bore - Range: 1.187" - 2.250"
7904	Cone 1" Bore - Range: 1.703" - 2.750"
5030	Double End Adapters 1" Bore - Range: 1.32" - 2.89"
7110	Spring for Ammco
7125	Spacer 1" Bore and 1/2" Length
7492	Self Aligning Spacer
7193	5 3/4" Diameter Bell Clamp 1" Bore (2X)
7489	Small Bell Clamp 3.62" - 1" Bore
7490	Small Bell Clamp 4 1/2" - 1" Bore (2X)
7101	1" Arbor for Ammco
7102	Arbor Nut for 7101



#	SKU	Description	Interchangeable Part
1	3003	Cone 1" Bore - Range 1.187" - 2.250"	
2	3004	Cone 1" Bore - Range: 2.023" to 3.975"	Ammco Part # 929573
3	7118	Cone 11/16" Bore - Range: 0.750" - 1.375"	3118, AS3118, TMRAS3118
4	30103	Cone 1" Bore - Range: 7.578" - 8.125"	
5	3004-1/7/8	Cone 1 7/8" Bore - Range: 2.23" to 3.975"	
6	3014-1.875	Cone - Range: 5.875" - 7.000"	
7	3016-1.875	Cone - Range: 6.875"-8.10"	

TRUCK SETS

SET INCLUDES	
SKU	Description
5055	6 1/2" Diameter Bell Clamp - 1" Bore
5056-1	7 3/4" Length Bell Clamp - 1" Bore
5053	Cone 1" Bore - Range: 3.5" - 5 1/8"
5054	Cone 1" Bore - Range: 5" - 6 1/8"
5059	Heavy Duty Spring

SET INCLUDES	
SKU	Description
5056-1	7 3/4" Diameter Bell Clamp - 1" Bore (2X)
5052	Cone 1" Bore - Range: 4 1/2" - 5 1/2"
5059	Heavy Duty Spring

SET INCLUDES	
SKU	Description
5053	Cone 1" Bore - Range: 3 1/2" - 5 1/8"
5055	6 1/2" Diameter Bell Clamp - 1" Bore (X2)
5059	Heavy Duty Spring

SET INCLUDES	
SKU	Description
5053	Cone 1" Bore - Range: 3.5" - 5 1/8"
5052	Cone 1" Bore - Range: 4 1/2" - 5 1/2"
30105	Cone 1" Bore - Range: 5.50" - 6.50"
5055	6 1/2" Diameter Bell Clamp - 1" Bore (2X)
5059	Heavy Duty Spring

SET INCLUDES	
SKU	Description
5055	6 1/2" Diameter Bell Clamp - 1" Bore (2X)
5036	Double ended Adapter 1" Bore - Range: 2.828" - 3.185"
5052	Cone 1" Bore - Range: 4 1/2" - 5 1/2"
5053	Cone 1" Bore - Range: 3.5" - 5 1/8"
5059	Heavy Duty Spring
5037	Double ended Adapter 1" Bore - Range: 3.203" - 3.560"

SET INCLUDES	
SKU	Description
5054	Cone 1" Bore - Range: 5" - 6 1/8"
5053	Cone 1" Bore - Range: 3 1/2" - 5 1/8"
5055	6 1/2" Diameter Bell Clamp - 1" Bore (2X)
5056-1	7 3/4" Length Bell Clamp - 1" Bore
5059	Heavy Duty Spring

SET INCLUDES	
SKU	Description
5036-1 7/8	Double end Adapters 1 7/8" Bore - Range: 2.828" - 3.185"
5037-1 7/8	Double end Adapters 1 7/8" Bore - Range: 3.203" - 3.560"

SET INCLUDES	
SKU	Description
5056-1	7 3/4" Bell Clamp
5052	4.50"-5.50" Cone
30105	5.50"
5059	Spring

SET INCLUDES	
SKU	Description
5052	Cone 1" Bore - Range: 4 1/2" - 5 1/2"
5055	6 1/2" Diameter Bell Clamp - 1" Bore
5056-1	7 3/4" Length Bell Clamp - 1" Bore
5059	Heavy Duty Spring

SET INCLUDES	
SKU	Description
30084	9.25" Bell Clamp (2X)
30105	5.60"-4.50" Cone
5059	Spring

SET INCLUDES	
SKU	Description
5053	Cone 1" Bore - Range: 3 1/2" - 5 1/8"
5055	6 1/2" Diameter Bell Clamp - 1" Bore
5056-1	7 3/4" Length Bell Clamp - 1" Bore
5059	Heavy Duty Spring

QUICK CHUCKS

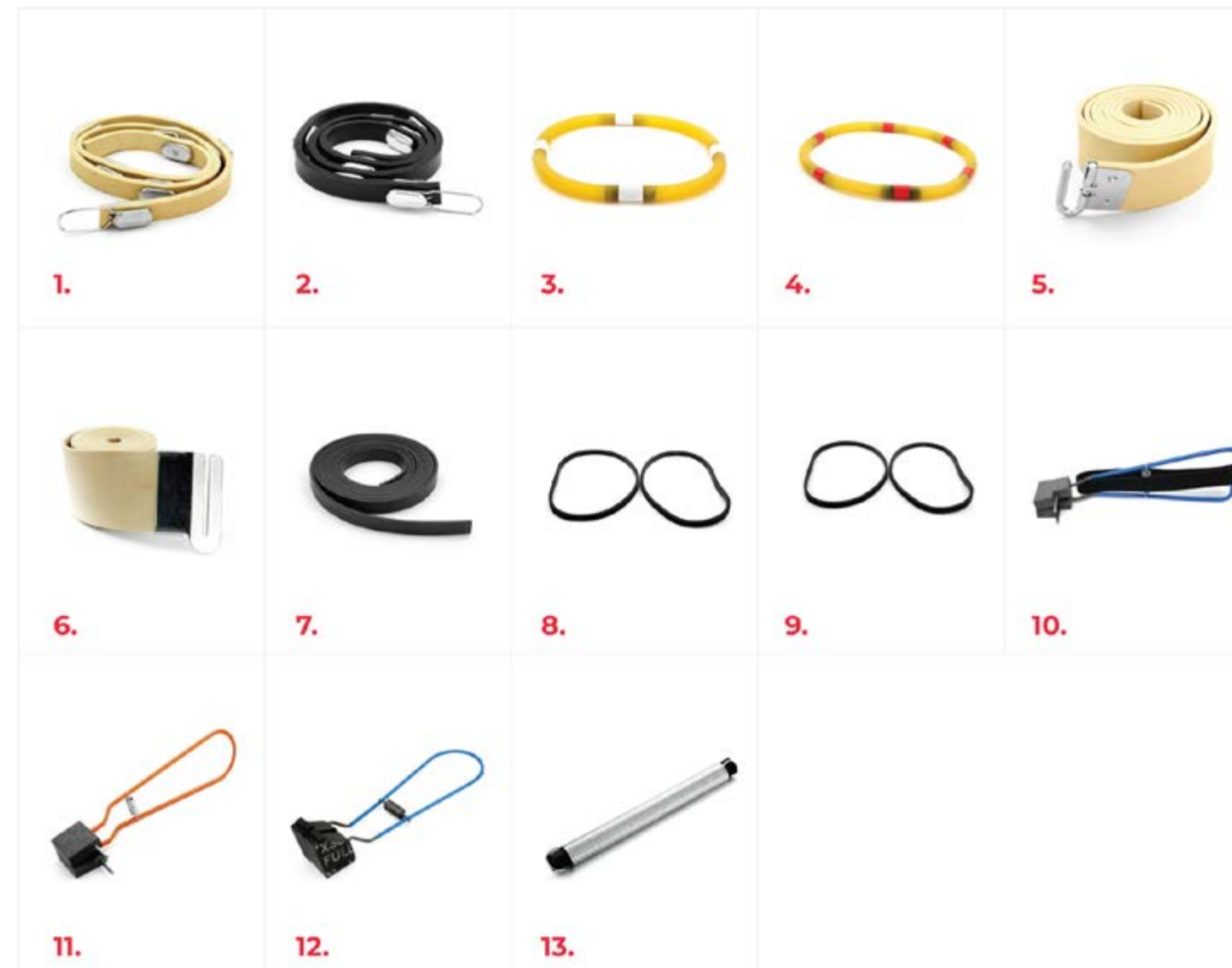


Standard Jaw Set for Chuck
80040K

SKU: 70045

SILENCERS

#	SKU	Description	Interchangeable Part
1	6030	Ammco 6920 - Silencer Band - Ventilated - Lead free	Ammco- 6920, 906920, BS10, BS-10, TMRBS10, FMC- 90084, Van Norman- 11148
2	6030N	Rotor Silencer Band- Fits Any Vented Rotor- Black Neoprene	
3	6031	Universal Ventilated Rotor Silencer - Non Adjustable	Accuturn # 434470, TMRBS35, BS35
4	6032	Large Ventilated Disc Rotor Silencer Range: 10-12" Diameter	Accuturn # 433785, TMRBS35, BS35
5	6036	1 3/4" Drum Silencer Band for Automotive Drums (Length: 5'8") Ammco 5280	Ammco # 905280, BS80A, BS-80A, TMRBS80A, TMRBS8
6	6037	2 3/4" Truck Drum Silencer Band Extra Long (Length: 6') Ammco 5290	Ammco # 5290, TMRBS5
7	6038	Solid Magnetic Rotor Silencer Band (0.25" x 4' - 6.35mm x 101.6mm)	Ammco # 909801, 9801, SB9801, TMRBS9801
8	6039	6039 Small Black Solid Rotor Silencer Band for Use on Thin Rotors 6-9" (2 Pcs. pack)	Ammco # 906921, 6921, BS17-2, TMRBS17-2, BS17
9	6040	Large Black Solid Rotor Silencer Band 10-12" diameter (2 Pcs. Pack)	Ammco # 906922, 6922, BS22-2, TMRBS22-2, BS22
10	6042	Universal Clip On Silencer with Velcro hold on strap	TMRCS1, CS1
11	6041A	Clip-On Disc Silencer	TMRCS1, CS1
12	6045HD	Clip-on Silencer for Pro Cut Lathes Heavy Duty	TMRCS5, CS5, CS-5, 50703, 90198P, CSPC-50DT, CSPC50DT, PC50
13	9800	Rotor Spring Silencer Assembly	Ammco 9800 (Set of 4), TMRBS9800



ARBOR & INSERTS >>



Brake Lathe Bits - Pack of 6
with Screws

SKU: 50778

ARBOR NUTS >>

TOOL HOLDERS



#	SKU	Description	Interchangeable Part
1	7091	Kwikway LH Positive Tool Holder	
2	7650	Ammco LH Tool Holder	Ammco # 910650, 10650, TMRBH10650, BH10650
3	7651	Ammco RH Tool Holder	Ammco OEM # 910651, 10651, TMRBH10651, BH10651
4	7701	RH Negative Tool Bit Holder	Ammco # 910701, BH10701, BH-10701, TMRBH10701
5	7702	LH Negative Tool Bit Holder	Ammco # 910702, BH10702, BH-10702, TMTBH10702
6	7872	Ammco Negative Drum Tool Holder (Negative Rake)	Ammco # 9872, 909872
7	7872S	Ammco Short Negative Drum Tool Holder (Negative Rake)	
8	7968	RH Positive Tool Holder	Snap-On # EEBR308A/309A, 925968, BH25968, TMRBH25968, 25968
9	7970	Short Positive Rake Tool Holder	
10	8286	Accu-Turn and FMC Zero Angle Drum Tool Holder	
11	8286S	Accu-Turn and FMC Zero Angle Drum Tool Holder (Short)	
12	8763R	Positive Tool Holder - Right Long	Long version: 8763L OEM #: Accu 433763, FMC 405, For rotors, drums, flywheels, and heavy-duty drums, 8764R OEM #: Accu 433764, FMC 404, For rotors and flywheels
13	8763RS	Positive Tool Holder - Right Short	Long version: 8763L OEM #: Accu 433763, FMC 405, For rotors, drums, flywheels, and heavy-duty drums, 8764R OEM #: Accu 433764, FMC 404, For rotors and flywheels
14	8764L	Positive Tool Holder - Left Long	Long version: 8763L OEM #: Accu 433763, FMC 405, For rotors, drums, flywheels, and heavy-duty drums, 8764R OEM #: Accu 433764, FMC 404, For rotors and flywheels
15	8764LS	Positive Tool Holder - Left Short	Long version: 8763L OEM #: Accu 433763, FMC 405, For rotors, drums, flywheels, and heavy-duty drums, 8764R OEM #: Accu 433764, FMC 404, For rotors and flywheels
16	9043	Accu-Turn and FMC R & L Hand Tool Holder	
17	9043L	Accu-Turn and FMC Left Hand Tool Holder	
18	9043R	Accu-Turn and FMC Right Hand Tool Holder	
19	BH69	RH & LH Round Bit Tool Holder Set Ammco 940630	Ammco # 940630
20	BH69L	Round Bit Tool Holder for Ammco - Left Hand	
21	BH69R	Round Bit Tool Holder for Ammco - Right Hand	
22	BH69B	Hold Down Clip for Round Inserts	
23	80337	Hunter LH & RH Round Tool Holder	Hunter # RP9-53980337
24	80337L	Hunter Round Tool Holder Left Hand	Hunter # RP9-53980337
25	80337R	Hunter Round Tool Holder Right Hand	Hunter # RP9-53980337
26	14-T7	Torx Wrench for Mini Screw	
27	14-T8	Torx Wrench for Mini Screw - T8 Drive size	

KIT INCLUDES	
SKU	Description
20494	Rotor Feed Detent Spring FMC
7487	Positive Rake Standard Bits for FMC (PK 10)
8077	Rotor Feed Nut for FMC
8071	Rotor Feed for FMC

KIT INCLUDES	
SKU	Description
7085	Spindle Boot for Ammco (2X)
7682	Brass Ring for Spindle Boot
7159	Snap Ring for Spindle Boot
7435	Wire Boot for Ammco (2X)
7854	Red 3 Arm Knob for Ammco (3X)
7142	5/16" Brass Plug Replacing Ammco 3142 (3X)

KIT INCLUDES	
SKU	Description
7744	Shifter Lever Body for Ammco
7742-1	Shaft for Shifter Lever
7742-2	Knob for Shifter Lever
7742-3	Washer for Shifter Lever
7742-4	Retaining Ring for Shifter Lever 3/8
7742-5	Spring for Shifter Lever

KIT INCLUDES	
SKU	Description
7079	Arm Rotor for 7075
7076	Slide Rotor for 7075
7075-6	12" Rod
7080EA	Clip Rotor for 7075 (Pack Of 10)
7077	Swivel Damper for 7075
7078	Lever Rotor for 7075
7183	Pads for Silencer 7075 (Set of 2)
7075-1	SCREW, 3/8-16X
7075-4	SOC HD CS, 3/8
7075-5	SCREW, 5/16-18
7075-2	METAL SCREW
7079P	5/32 X 5/8 SPRING
7075-3	WRENCH, 3/8 X

KIT INCLUDES	
SKU	Description
77997	Worm Drive for Ammco
7821	Coupling assembly for Ammco
7996	Shear Gear for Ammco
9815M	Right Angle Drive Machine Housing
9815-1	Needle Roller Bearing (2X) 42088, 906871
9815-2	Thrust Race 815 RT Drive (4X) 40136, 906872
9815-3	Retaining Ring 1/2 Shaft Side Mount
9815-4	1-3/8 Hole Plug for RT Drive
9815-5	10-24 x 1/4 Set Screw
7821B	Brass Bushing

KIT INCLUDES	
SKU	Description
7650	LH Tool Holder Ammco
7651	RH Tool Holder Ammco
7584	New Style Brass for Twin Cutter from Ammco (2X)
7854	Red 3 Arm Knob for Ammco (2X)
7905	Return Spring for Twin Cutter (2X)
7879	Locator Screw Ammco Twin Cutter (2X)
7901	Dial Assembly part of Ammco Twin Cutter (2X)
7910	Spring for Twin Cutter (2X)
7909	Screw for Twin cutter Sq head (2X)
7900	Twin cutter Body
7911	1/4/20 Lock nut (2X)
7977	Plug (2X)
7701	RH Negative Tool Bit Holder
7702	LH Negative Tool Bit Holder

KIT INCLUDES	
SKU	Description
7836EA	Brass Plug for Ammco
7682	Brass Ring for Spindle Boot
6030	Natural Rubber Adjustable Ventilated Rotor Silencer Band - Fits Any Vented Rotor
6036	1 3/4" Drum Silencer Band for Automotive Drums (Length: 5'8")
7914	Negative Rake Bits (10/pk)
7854	Red 3 Arm Knob for Ammco (3X)
7085	Spindle Boot for Ammco
7996	Shear Gear for Ammco

KIT INCLUDES	
SKU	Description
7825	Roller Coupler part of 7821
29822-1	Repair Part for Right Angle Gear Drive 9815
7821D	Dowel Pin
7821S	External Retaining Ring 3/4 OD
7826	Gear Shaft

KIT INCLUDES	
SKU	Description
7222	Longer Stud for 7936
6940	5/16 Long Allen Wrench Part of 7936
7227	Hold Down Nut
7936MC	Plate
6937	Flat Head Socket C
6938	Flat Head Socket H

KIT INCLUDES	
SKU	Description
7908	Dial Assembly Rod for Ammco
7907	Dial Micrometer for Twin Cutter 7900
7906	Plug Dial for Twin Cutter
7923	Knob Dial Rod and Screw for Ammco
7929	Spring Washer



Brake Lathe Maintenance

Feel free to explore our website to view the array of products we have available. We'd like to highlight two belts that we highly recommend: the Ammco V Belt and the Ammco 20" Belt designed specifically for use with two-step 2 Spindle pulleys. At MT-RSR, you can find a comprehensive selection of replacement parts for your brake lathe needs. Additionally, we offer brake lathe repair kits that include various components such as boots, belts, silencer bands, bits, and much more. Keeping your machinery well-maintained is essential for ensuring a smoothly operating workshop and satisfied customers. Our commitment is to deliver exceptional service and top-notch products proudly crafted and produced right here in the United States.

SHAFTS/STUDS/RODS



KIT INCLUDES	
SKU	Description
77774	Drive Rod for Ammco
7775	Gear Support for Ammco
4774	Gear for Trap Assembly
7757-1	Socket Head Cap Screw 10-24 x 5/16
7757-2	Spring Pin 1/8 x 5/8
7757-3	Flat Washer 3/8 x .03/Thick
7757-4	Socket Head Cap Screw 10/24 x 5/8
7757-5	Flat Washer 3/8 x .06 Thick
7757-6	Dowel Pin 3mm x 6mm
7757-7	Spacer OD x 1/8 Length for 10# Screw

KIT INCLUDES	
SKU	Description
70346	Guide Bar for extending slides
78529	New Lead Screw Nut for Ammco

#	SKU	Description	Interchangeable Part
1	7031	Ammco Short Stud 3031	Ammco # 903031, 3031, ST3031, TMRST3031
2	7211	Ammco Lead Screw 903211-1	Ammco 903211-1, 32111, LS32111, TMRLS32111
3	7318	Ammco Lead Screw # 910318	Ammco # 910318, 10318, LS10318, TMRLS10318
4	7337	Shaft for Ammco Adjusting Rod	Ammco part # 910337
5	7913	Ammco Long Stud	Ammco # 925913, ST25913, 25913, TMRST25913
6	7918	Ammco Drum Lead Screw	Ammco # 909918
7	7919	Ammco Drum Lead Screw (Longer version)	Ammco # 909919
8	8156	Accu-Turn Rotor Feed Screw	Accu-Turn Part # 433156, 433156, RS433156, TMRRS433156
9	8157	Accu-Turn Drum Feed Screw	Accu-Turn Part #433157
10	8312	Drum Feed Screw (Truck) (Accuturn)	903043
11	8670	FMC Hex Drive Rod	FMC # 90070, HD90070, BL-50000
12	8760	Accu-Turn Adjustment Screw	
13	77748	Ammco Shifter Shaft	Ammco # 907748, 7748, SS7748, TMRSS7748
14	77755	Ammco Shaft	7767, SH7767, TMRSH7767
15	77997	Ammco Worm Drive	Ammco # 907997, 7997, WB7997, TMRWB7997
16	9847	Input Shaft Worm Gear For Brake Lathe	Ammco # 9847-C, 909847C, RM-40040

SPACERS >>

BOOTS & BELTS >>

LEAD SCREW NUTS/FEED SCREW NUTS >>

Brake Lathe Solutions

Discover the solution to your brake lathe issues with our exceptional aftermarket replacement motor, sure to leave you questioning why you didn't make the change sooner! If your brake lathe is encountering challenges such as uneven feeding or directional irregularities, it may be a clear sign that it's time for a motor replacement, and our products emerge as the ideal remedy. Available exclusively through MT-RSR, our top-tier motors are meticulously engineered to ensure flawless operation for your tabletop lathe. Bid farewell to your lathe difficulties and embrace the outstanding performance delivered by our superior-quality motors.



PULLEYS



#	SKU	Description	Interchangeable Part
1	7175AL	Aluminum Pulley Set with Belt - Ammco	Ammco # 940175, TMRPU40175, PU40175, PME # 10000
2	7024	Ammco Small Drive Pulley	Ammco OEM # 903024, TMRPU3024, PU3024
3	7784-1	Large Pulley and Pin for Ammco	Ammco # 907784-1, TMRPU7784, PU7784
4	7035	Eccentric Belt Release Pin (Ammco 903035)	Ammco # 903035
5	7088	Belt Release Handle (Ammco 903088)	903088
6	7364	Wave Washer (Ammco 902364)	902364, RM-40050

GUIDE BAR/BORING BAR



#	SKU	Description	Interchangeable Part
1	70346	Ammco Guide Bar for extending slides	Ammco #910346, 10346, GB10346, TMRGB10346
2	2066	Ammco Lower Boring Bar Clamp	Ammco # 920666, BB20666P, TMRBB20666P, 20666P
3	7843	Ammco Standard Boring Bar	Ammco # 905843, BB5843, TMRBB5843, 5843
4	2017	Ammco Upper Boring Bar Clamp	Ammco # 903017, BB3017, TMRBB3017, 3017

MOTORS & GEARS



#	SKU	Description	Interchangeable Part
1	7009	Ammco Motor Mount Bracket with Hardware	Ammco # 3009
2	7168	Ammco 1 HP Motor	Ammco # 902165, MO2165, 2165, TMRMO2165, TC4077
3	433641	Accuturn Feed Motor for Brake Lathes 1/60 HP 6 RPM 120 Volt, 60 Hz, 1.5 Amps (Includes Fan)	Accuturn 433641, TMRSM433641
4	7378	Ammco Friction Gear Replacement 903078	Ammco # 903078, 3078, GE3078, TMRGE3078
5	7381	Ammco Friction Disc Gear replacement OEM 903081	OEM: 903081, 3081, GE3081, TMRGE3081
6	73082	Ammco Sliding Friction Gear	Ammco # 903082
7	7377	Ammco Friction Disc 903077	Ammco 903077, 3077, GE3077, TMRGE3077
8	7831	Spindle Drive Key (Ammco 909831)	909831, RM-40027

MISC.



#	SKU	Description	Interchangeable Part
1	CTA1435	Disc Brake Gauge with Tread Depth Gauge	
2	7220	Ammco Thrust Bearing Race 929220	Ammco # 929220
3	7221	Ammco Thrust Bearing 929221	Ammco # 929221
4	7211A	Bearing and Washer for 7211	
5	204240	Washer for 204241	WA204240, TMRWA204240
6	7165	Ammco Spherical Washer	BP3165, TMRBP3165
7	83715	Accu-Turn Alignment Washer Set of 2	433715, WA433715, TMRWA433715
8	7033	Brass Thrust Washer for Quill Drive Gear	Ammco # 903033, 40030
9	7138	Spherical Washer	
10	OS3163-BLUE	Ammco Seal (Blue)	Ammco OEM: 903163
11	OS3163-SIL	Ammco Seal (Silver)	Ammco OEM: 903163, TMROS3163
12	OS3164	Ammco Seal	Ammco # 903164, 3164, TMROS3164, OS3164
13	7141	Ammco 3141 3/16" Brass Plug Replacement (Pack of 10)	
14	7142	Ammco 3142 5/16" Brass Plug Replacement (Pack of 10)	Ammco # 903142
15	7836	Ammco 1/4 Brass Plug (Pack of 10)	Ammco Part #909836, 9836, BP9836
16	7974	Ammco Red Cap	Ammco # 906974
17	4135	Fan for 433641	SM433641, TMRSM4135
18	70830	Spindle Quill Gear	RELS : Part # 40031, Ammco : Part # 909830, 910216, 10216, Ranger RL-8500 Part # 5326143
19	70830XL	Extended Spindle Quill Gear	
20	29822-1	Repair Part for Right Angle Gear Drive 9815	
21	7775	Ammco Gear Support	Ammco # 907775, 7775, TA7775, TMRTA7775
22	9822	Shaft and gear part of Coupling Assembly for Ammco	
23	7790	Step Adapter Takes 1 7/8 "Bore down to 1" Bore (Set of 3)	Accuturn # 434472, Ammco # 904790
24	7058	Ammco Shifter Clutch	Ammco # 903058, 3058, GB3058, TMRGB3058



#	SKU	Description	Interchangeable Part
25	7963	Ammco Work Light Brake Lathes	Ammco # 907963, 7963, WL7963, TMRWL7963
26	23026	Crank Handle for hand wheel	Ammco # 903026, 3026, CH3026, TMRCH3026
27	7592	Rear Clamp spindle lock for Ammco	Ammco # 909592, 9592, CL9592, TMRCL9592
28	7818	Ammco Disc Drive #9818	Ammco # 9818
29	7893	Ammco On/Off Toggle Switch	Ammco # 906893
30	3042	Ammco Shift Lever	Ammco # 903042, 3042, SL3042, TMRSL3042
31	7747	Ammco Index Plate for (Pack of 10)	Ammco # 907747
32	7064	Ammco Cross Feed Spring	Ammco # 902064, SP2064, TMRSP2064
33	7084	Ammco Knurled Knob	Ammco # 903084, 3084, KK3084, TMRKK3084
34	7218	7218 Ammco Small Wrench 5/16" X 3/8"	903218, WR3218
35	7022	Wrench 1 1/4" for Ammco	
36	5005	Spanner Wrench Set for 5000 series	15, HK15, TMRHK15
37	433693	Accu-Turn 4 Pole Switch	433693, TS433693, TMR433693
38	66704	FMC Threaded Knob	66704, KK66704, TMR66704
39	8633Long	T Bolt for Accu-Turn (Long)	
40	8682	Accu-Turn Way Cover Spacer	
41	90082	Hex Shaft for FMC	
42	MI7556	MI7556 Screw for Hunter Round bit	MI7556
43	8735	Accu-Turn Way Cover	OEM #433735
44	90686	FMC Hex Shaft Assembly	FMC - 90686, TMRHD90686
45	47719	Ammco Coupling Replacement	Ammco Part # 940717, 9541, CF9541, TMRCF9541
46	7481	Ammco Chip Shield	Ammco # 9481
47	8736	Accu-Turn Way Cover Wiper Set of 3	



WHEEL BALANCING

Replacement parts and accessories for most brands of wheel balancers. From our made-in-house pin plate and collet set to our selection of adhesive wheel weights, we have everything you need to get wheels balanced right so that every customer is satisfied. A variety of parts for 28-mm, 36-mm, 38-mm, 40-mm, and 1-inch shafts.

CONES & BACKING PLATES



SET INCLUDES	
SKU	Description
4021-40	Pin Plate #1
4022-40	Pin Plate #2
4023-40	Pin Plate #3
4024-40	Pin Plate #4
4025	Wide taper Stud (A) for pin plate 3.2 Long"
4026	Small Taper Stud (B) for pin plate 3.7" Long
4027	Round top Stud (C) for pin plate 4.1" Long
4029	Reference chart for Pin Plate system
3101-40	Low Taper Collet 2.00"-2.30" #1
3102-40	Low Taper Collet 2.30"-2.60" #2
3103-40	Low Taper Collet 2.60"-2.90" #3
3104-40	Low Taper Collet 2.90"-3.20" #4
3105-40	Low Taper Collet 3.20"-3.50" #5
3106-40	Low Taper Collet 3.50"-3.80" #6
3107-40	Low Taper Collet 3.80"-4.10" #7
3108-40	Low Taper Collet 4.10"-4.40" #8
3109-40	Low Taper Collet 4.40"-4.70" #9

SET INCLUDES	
SKU	Description
4021-40	Pin Plate #1
4022-40	Pin Plate #2
4023-40	Pin Plate #3
4024-40	Pin Plate #4
4025	Wide taper Stud (A) for pin plate 3.2 Long"
4026	Small Taper Stud (B) for pin plate 3.7" Long
4027	Round top Stud (C) for pin plate 4.1" Long
4029	Reference chart for Pin Plate system

SET INCLUDES	
SKU	Description
3101-40	Low Taper Collet 2.00"-2.30" #1
3102-40	Low Taper Collet 2.30"-2.60" #2
3103-40	Low Taper Collet 2.60"-2.90" #3
3104-40	Low Taper Collet 2.90"-3.20" #4
3105-40	Low Taper Collet 3.20"-3.50" #5
3106-40	Low Taper Collet 3.50"-3.80" #6
3107-40	Low Taper Collet 3.80"-4.10" #7
3108-40	Low Taper Collet 4.10"-4.40" #8
3109-40	Low Taper Collet 4.40"-4.70" #9

SET INCLUDES	
SKU	Description
13082	Conversion Wheel Balancer Shaft Converts 28MM to 40 mm (Only Shaft, Coupler)
812103	40 MM Hub Nut for Balancer Shaft with 8 MM Thread Pitch
10058	40 MM Pressure Cup
8476-40	Balancer Cone 40 MM Bore - Range 1.175" - 2.58"
8253-40	Balancer Cone 40 MM Bore - Range 2.44" - 3.06"
8252-40	Balancer Cone 40 MM Bore - Range 2.95" - 3.63"
2095-40	Balancer cone 40 MM Bore - Range: of 3.375"-5.25"
8825	Cone Spring 36 or 38 or 40MM



#	SKU	Description
1	2069-28	Balancer Cone Set (Range: 3.375 to 5.88") and 7" Offset Spacer
2	2069-40	Balancer Cone Set (Range: 3.375 to 5.88") and 7" Offset Spacer
3	JF4/550-28	Balancer Adapter - Range 6.00"-7.00" Ford F450/F550 -28MM
4	JF4/550-36	Balancer Adapter - Range 6.00"-7.00" Ford F450/F550 -36MM
5	JF4/550-40	Balancer Adapter - Range 6.00"-7.00" Ford F450/F550 -40MM
6	3110-40	Low Taper Collet 4.7"-4.9" #10
7	90028	28MM 3-Jaw Balancer Chuck
8	90036	36MM 3-Jaw Balancer Chuck
9	90038	38 MM 3-Jaw Balancer Chuck
10	90040	40MM 3-Jaw Balancer Chuck
11	90041	Extended Jaws Set For Balancer Chuck Up To 9.125"

Bore Size	28MM	40MM
KIT SKU #	9240-28	9240-40
Range:	Individual Part Numbers	
1.69"-2.23" Cone	9251-28	9251-40
2.15"-2.58" Cone	9252-28	9252-40
2.50"-2.94" Cone	9253-28	9253-40
2.85"-3.28" Cone	9254-28	9254-40
Spring	8820	8825

Bore Size	28MM	36MM	40MM
KIT SKU #	9250-28	9250-36	9250-40
Range:	Individual Part Numbers		
1.69"-2.23" Cone	9251-28	9251-36	9251-40
2.15"-2.58" Cone	9252-28	9252-36	9252-40
2.50"-2.94" Cone	9253-28	9253-36	9253-40
2.85"-3.28" Cone	9254-28	9254-36	9254-40
3.20"-3.63" Cone	9255-28	9255-36	9255-40
3.45"-4.36" Cone	9256-28	9256-36	9256-40
4.24"-5.18" Cone	9257-28	9257-36	9257-40

Bore Size	28MM	36MM	38MM	40MM
Range:	Individual Part Numbers			
3.375"-5.88"	29069-28	29069-36	29069-38	29069-40

Bore Size	28MM	40MM
KIT SKU #	2050-28	2050-40
Range: Individual Part Numbers		
Collet/Cone 4.72" to 6.85"	2051-28	2051-40
7" Backing Plate	2058-28	2058-40

Bore Size	28MM	36MM	40MM
KIT SKU #	2057-28	2057-36	2057-40
Range: Individual Part Numbers			
5.03"-6.88 Cone	2059-28	2059-36	2059-40
7" Backing Plate	2058-28	2058-36	2058-40

Bore Size	28MM	36MM	40MM
KIT SKU #	2409-28	2409-36	2409-40
Range: Individual Part Numbers			
1.75"-2.75" Cone	2410	8476-36	8476-40
2.44"-3.06" Cone	2411	8253-36	8253-40
2.95"-3.63" Cone	2412	8252-36	8252-40
Spring	8820	8825	8825

Bore Size	28MM	36MM	40MM
Range: Individual Part Numbers			
5.875"-7.31"	2060-28	2060-36	2060-40

Bore Size	28MM	36MM	40MM
KIT SKU #	2415-28	2415-36	2415-40
Range: Individual Part Numbers			
1.75"-2.75" Cone	2410	8476-36	8476-40
2.44"-3.06" Cone	2411	8253-36	8253-40
2.95"-3.63" Cone	2412	8252-36	8252-40
3.375"-5.25" Cone	2095-25	2095-36	2095-40
Spring	8820	8825	8825

Bore Size	28MM	36MM	40MM
KIT SKU #	2061-28	2061-36	2061-40
Range: Individual Part Numbers			
5.875"-7.31" Cone	2060-28	2060-36	2060-40
7" Backing Plate	2058-28	2058-36	2058-40

Bore Size	28MM	36MM	40MM
Range: Individual Part Numbers			
3.375"-5.25"	2095-28	2095-36	2095-40

SET INCLUDES	
SKU	Description
20-PROS-40	SpeedPlate for 4-lug and 8-lug wheels
20-5LUG-40	SpeedPlate for 5-lug wheels
	SpeedPlate for 6-lug wheels
20-TIP-B	Six (6) Torque Tips - Style 1
20-TIP-C	Six (6) Torque Tips - Style 2
20-TIP-CL	Six (6) Torque Tips - Style 2 Long
20-TIP-E	Six (6) Torque Tips - Style 3

SET INCLUDES	
SKU	Description
20-PROA-40	SpeedPlate for 4-lug and 8-lug wheels
20-5LUG-40	SpeedPlate for 5-lug wheels
	SpeedPlate for 6-lug wheels
20-TIP-B	Six (6) Torque Tips - Style 1
20-TIP-C	Six (6) Torque Tips - Style 2
20-TIP-CL	Six (6) Torque Tips - Style 2 Long
20-TIP-E	Six (6) Torque Tips - Style 3

Introducing the MT-RSR SPEEDplate - a game-changer in the world of wheel balancing equipment. Forget about all your previous negative experiences with quick plates and speed plates; our SPEEDplate redefines efficiency and ease. Crafted with a high-precision metal and durable plastic design, it's built to withstand the rigors of everyday use and even disassembles upon impact to prevent permanent damage. And here's the real game-changer: one-finger adjustment. Traditional wheel balancing clamping tools have been notoriously slow to set up and use, but with our SPEEDplate, it's just a few clicks away. Say goodbye to frustrating setups and hello to effortless wheel balancing. The MT-RSR SPEEDplate: redefining speed, precision, and convenience in one package.



SET INCLUDES	
SKU	Description
3101-40	Low Taper Collet 2.00"-2.30" #1
3102-40	Low Taper Collet 2.30"-2.60" #2
3103-40	Low Taper Collet 2.60"-2.90" #3
3104-40	Low Taper Collet 2.90"-3.20" #4
3105-40	Low Taper Collet 3.20"-3.50" #5
3106-40	Low Taper Collet 3.50"-3.80" #6
3107-40	Low Taper Collet 3.80"-4.10" #7
3108-40	Low Taper Collet 4.10"-4.40" #8
3109-40	Low Taper Collet 4.40"-4.70" #9
20-PROS-40	SpeedPlate for 4-lug and 8-lug wheels
20-5LUG-40	SpeedPlate for 5-lug wheels
	SpeedPlate for 6-lug wheels
20-TIP-B	Torque Tips - Style 1
20-TIP-C	Torque Tips - Style 2
20-TIP-CL	Torque Tips - Style 2 Long
20-TIP-E	Torque Tips - Style 3

THE FUTURE OF WHEEL BALANCING IS HERE!

Are you tired of slow, fragile, and complicated wheel balancing tools? Look no further than the new SpeedPlate from MT-RSR. This ultra-fast, ultra-durable, and accurate tool is a game-changer for any shop looking to improve their wheel balancing results.



MT-RSR SPEEDPLATES

With the SpeedPlate, wheel balancing has never been easier, faster, or more accurate. Say goodbye to fragile, slow, and expensive tools and hello to the future of wheel balancing.

Ultra Fast

The SpeedPlate is designed to make wheel balancing easier and faster. It allows for on-the-fly, single-handed bolt pattern adjustment, making it as fast as an old-fashioned pressure cup. Plus, it's self-centering, so there's no need to be overly careful with the adjustment.

Ultra Durable

But the SpeedPlate isn't just fast, it's also incredibly durable. It can take an incredible beating without losing balancing accuracy, as seen in our drop test videos online. And, tested up to 400,000 cycles, it has a longer lifespan than most balancers on the market today.

Protective

The SpeedPlate from MT-RSR protects wheels from damage, including scratches on alloy wheels, marks on plastic-clad wheels, and peeling of the PVD coating on Ford wheels.

Accurate

Wheel balancing clamping tools are designed to improve balancing results and provide the customer with the smoothest possible ride while avoiding customer complaints and come-backs.



Utilize our convenient QR code to access detailed instructions on how to harness the full potential of our Speed Plates, ensuring you achieve the most optimal and accurate balancing outcomes for your vehicle's wheels. Say goodbye to vibrations and uneven tire wear - MT-RSR SpeedPlate is your key to a smoother and safer ride.

SET INCLUDES	
SKU	Description
20-LCSA-40	SpeedPlate for 4-lug and 8-lug wheels, reconfigurable to 6-lug
20-5LUG-40	SpeedPlate for 5-lug wheels
	SpeedPlate for 6-lug wheels
20-TIP-B	Torque Tips - Style 1
20-TIP-C	Torque Tips - Style 2
20-TIP-CL	Torque Tips - Style 2 Long
20-TIP-E	Torque Tips - Style 3
	Two (2) AutoClamp Handles for 40mm Shaft

KIT INCLUDES	
SKU	Description
20-LCSS-40	SpeedPlate for 4-lug and 8-lug wheels, reconfigurable to 6-lug
20-5LUG-40	SpeedPlate for 5-lug wheels
20-TIP-B	Six (6) Torque Tips - Style 1
20-TIP-C	Six (6) Torque Tips - Style 2
20-TIP-CL	Six (6) Torque Tips - Style 2 Long
20-TIP-E	Six (6) Torque Tips - Style 3

KIT INCLUDES	
SKU	Description
20-CSPS-40	Combination SpeedPlate for 3-lug, 4-lug, 6-lug and 8-lug wheels
20-TIP-B	Six (6) Torque Tips - Style 1
20-TIP-C	Six (6) Torque Tips - Style 2
20-TIP-E	Six (6) Torque Tips - Style 3

UWT



38MM X 3MM Quick Nut Kit

SKU: 3830

HUB NUTS, SHAFTS & MEASUREMENT TOOLS

3M WHEEL WEIGHTS

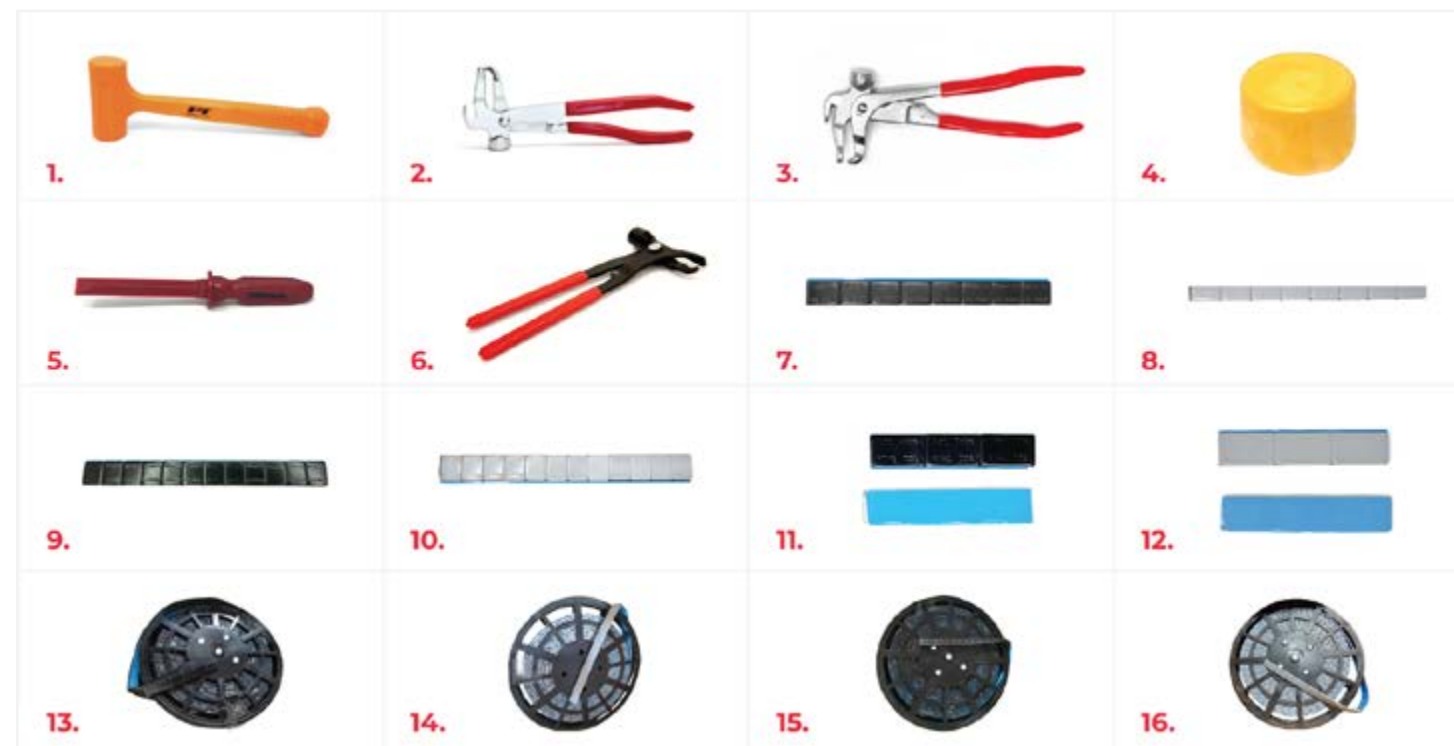


3M Wheel Weight TN4029,
99473

SKU: 3M-99473



WHEEL WEIGHTS & WHEEL WEIGHT TOOLS



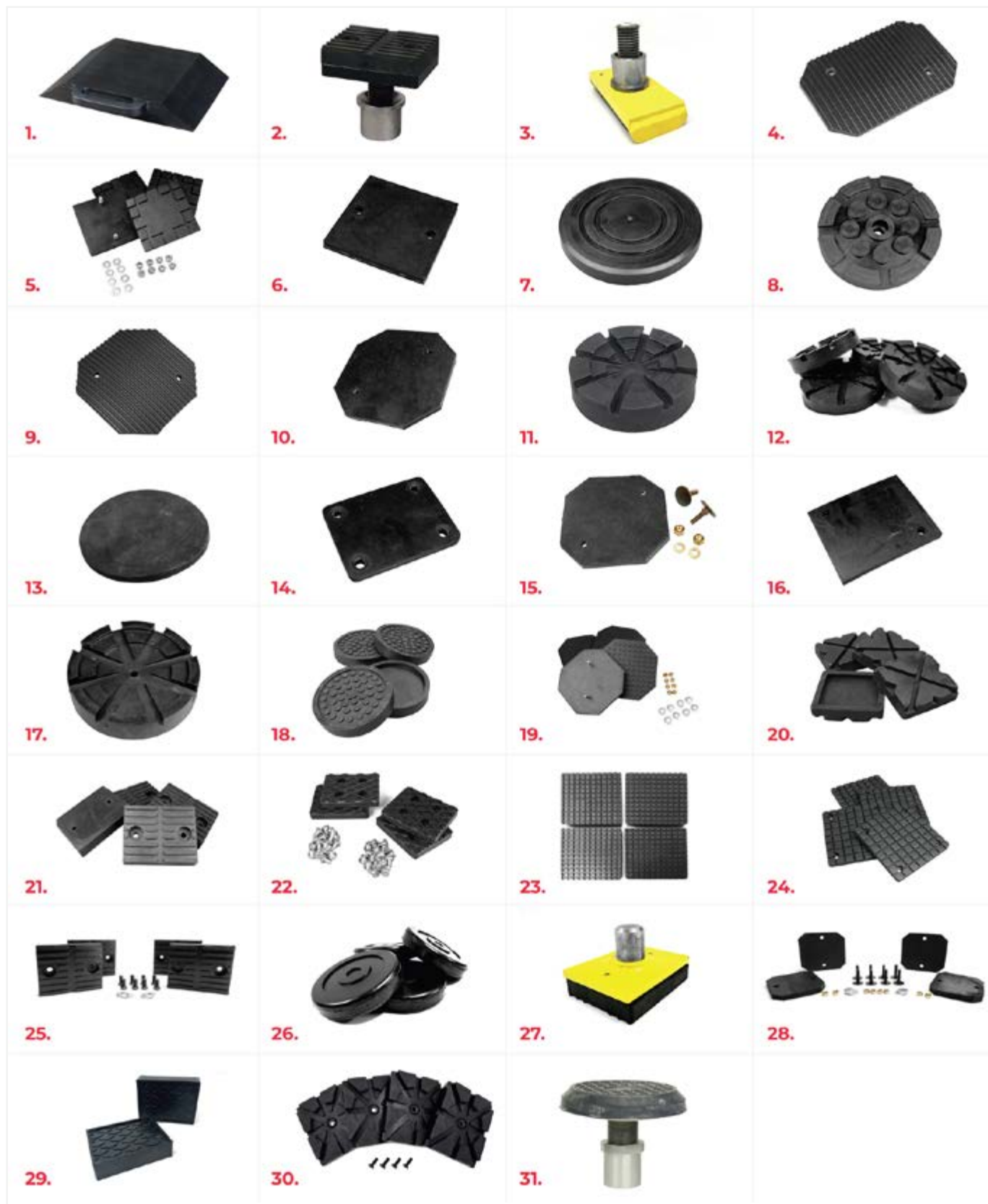
#	SKU	Description
1	PT-7216	16oz Hi.-Viz Dead Blow Hammer
2	WWH-36	Premium Wheel Weight Hammer/Plier
3	HAM-3121A	Premium Duty Wheel Weight Pliers
4	WWH-CAP	Plastic Cap for Wheel Weight Hammer 4PK
5	75023	Stick-On Wheel Weight Remover/Scraper
6	T139	Wheel Weight Tool
7	WW-FE-5035-BLK	1/2 oz Black Steel Adhesive Wheel Weight Low Profile
8	WW-FE-5035-GRY	1/2 oz Gray Steel Adhesive Wheel Weight Low Profile
9	WW-FE-2552-BLK	1/4 oz Black Steel Adhesive Wheel Weight Low Profile
10	WW-FE-2552-GRY	1/4 oz Gray Steel Adhesive Wheel Weights Low Profile
11	WW-FE-0023-BLK	1 oz Black Steel Adhesive Wheel Weight - Low Profile
12	WW-FE-0023-GRY	Steel Wheel Weigh .1oz - 3 Gray blue tape
13	WW-ROLL-50320-BLK	1/2 oz Black Steel Adhesive Wheel Weight - Roll of 320
14	WW-ROLL-50320-GRY	1/2 oz Gray Steel Adhesive Wheel Weight - Roll of 320
15	WW-ROLL-25640-BLK	1/4 oz Black Steel Adhesive Wheel Weight - Roll of 640
16	WW-ROLL-25640-GRY	1/4 oz Gray Steel Adhesive Wheel Weight - Roll of 640

A close-up photograph showing the underside of a dark-colored car. A yellow, cylindrical rubber lift pad is positioned between the car's frame and a metal support arm of a hydraulic lift. The background is blurred, showing other parts of the lift and the workshop environment.

AUTO LIFT

Rubber lift pads to protect paint and grip cars. Check out our selection of lift pads for Alamo, Challenger, Forward, Quality, Western, BendPak, and more. Most pads are available to ship the same day or the next day.

LIFT PADS



#	SKU	Description	Interchangeable Part
1	6527	Universal Low Profile Rubber Riser Pad 18" X 12" 2-1/2" Tall - Each	
2	6530	Complete Pad Assembly 2-1/8" OD Collar Not Frame Engaging	
3	6531	Challenger Lift Rubber Pad Adapter Base For GM Trucks	BH-7231-47
4	6501-4	Alamo Rubber Arm Pad (Pack of 4)	TMRLP617
5	6502-4	Challenger Rubber Arm Pad 4" x 4" (Pack of 4)	OEM : A11052,A1104, LP617, TMRLP617, BH7232-4
6	6503-4	Challenger Rubber Arm Pad A11052x (Pack of 4)	OEM : A11052x, A1104x
7	6504-4	Challenger Rubber Arm Pad B2208 (Pack of 4)	OEM : B2208, LP620, TMRLP620, BH7232-4 - Fabric Version Also Available
8	6505-4	Quality Rubber Arm Pad (Pack of 4)	OEM :26K25030
9	6506-4	Forward Rubber Arm Pad 5" x 5" x 1/4" (Pack of 4)	OEM : 994105, 991234, 991222, LP603TH, TMRLP603TH, BH7235
10	6507-4	Forward Rubber Arm Pad 5" x 5" x 3/8" (Pack of 4)	OEM Ref: 994105X, 991234XC, 991222X, LP603TH, TMRLP603TH, BH7235-90-4, TMRLP603
11	6508-4	Force Rubber Arm Pad (Pack of 4)	OEM : 90292, 90292-4
12	6509-4	Globe/Ford Smith Rubber Arm Pad (Pack of 4)	OEM : 10.157, LP605, BH7450-4, TMRLP605
13	6510-4	Rotary Rubber Arm Pad (Pack of 4)	OEM : FJ6155-7
14	6511-4	Rotary Rubber Arm Pad (Pack of 4)	OEM : FJ6213, LP609, TMRLP609, 7542-73
15	6512-4	Western Rubber Arm Pad (Pack of 4)	OEM : S-2001
16	6513-4	Western Rubber Arm Pad (Pack of 4)	OEM : S-2002
17	6514-4	Wheeltronic Rubber Arm Pad (Pack Of 4)	OEM : 6-2050
18	6515-4	ALM Rubber Arm Pad (Pack of 4)	OEM: AMLP-0127, LP616, LP-616, TMRLP616
19	6516-4	Challenger & VBM Rubber Arm Pad (Pack of 4)	OEM: 31057, 11052 & 200086, LP602, TMRLP602, BH-72250-01-4, TMRLP602
20	6517-4	Western Rubber Arm Pad (Pack of 4)	OEM: S-350, LP607, BH-7750-02-4, 7750-02-4
21	6518-4	Ammco/Ben Pearson Rubber Arm Pad (Pack of 4)	Ammco OEM: 82365 & 91559, 7101-00, BH7101-00
22	6519-4	Benwil & Bishamon Rubber Arm Pad (Pack of 4)	OEM: 205175, SP710002, 100533 HD, LP601, TMRLP601, BH7205-4
23	6520-4	Bendpak Slip Over Rubber Arm Pad	
24	6521-4	Replacement Rubber Pad Kit	
25	6522-4	Lift Pad Kit - BendPak and Some Western	LP600, TMRLP600, BH7475-4, TMRLP600
26	6523-4	BendPak Slip-On Rubber Pad 5" 4PK	Bend-Pak 5715017, BH-7474-78-4
27	6524-4	BendPak Rubber Pad Kit (1 pad with Bracket)	
28	6525-4	Heavy Duty Rubber Arm Pad Kit (Set of 4 Pads) for Challenger Lifts	
29	6526-4	Universal Rubber Blocks 4-3/4" X 6-1/4" 1-1/2" Thick - Pack of 4	LP615, BH-9756-86, FJ2428X, TMRLP615
30	6528-4	Rectangular Rubber Pads Kits 4PK	OEM: 3-0872, BH-7805-168, LP610. Models: T10, T9, 8144 V, Space Saver 12000 (rolling jacks), S21NSR1, S21NXPR1, S21NSB3, S21NSR3, S21NRM1. TMRLP610
31	6529-4	2 Stage Adapter Kit for SLR	



SKU	PAGE
81300	6
98388	6
3M-38374	6
3M-55453	6
3M-80020	6
3M-81002	6
3M-81250	6
3M-81409	6
3M-82110	6
3M-82928	6
3M-82929	6
3M-82930	6
3M-83130	6
3M-83131	6
3M-83132	6
3M-84910	6
3M-84911	6
3M-84912	6
3M-85048	6
3M-86181	6
3M-88253	6
3M-S1201GAF	6
8201AF	6
WC32-1	6
WRK-230	6
89900	7
89901	7
HAM-6313	7
HAM-6352	7
S-14010	7
S-14141	7

SKU	PAGE
WC32-6	7
HAM-A66DD	8
HAM-A66DG	8
HTS-A78ED	8
HAM-266BK	9
HAM-6201	9
HAM-6203B	9
HAM-6211	9
HAM-6213	9
HAM-6216	9
HAM-6218	9
HAM-6228	9
HAM-6437AL	9
HAM-6439AL	9
HAM-TPS1502C	9
HAM-TPS412	9
HTS-B10BN-US	9
MX-Sensor	9
MX-Sensor-M	9
HAM-I502C	10
HAM-6103	10
HAM-6206B	10
HAM-6207	10
HAM-6208	10
HAM-6210	10
HAM-6215A	10
HAM-6225	10
HAM-6231C	10
HAM-6235	10
HAM-6236	10
HAM-6266	10

SKU	PAGE
HAM-6503	10
HAM-6507	10
HAM-TPMS416AL	10
TPMS-20	10
TPMS-30	10
TPMS-65	10
TPMS-90	10
TPMS-950	10
HAM-6102	11
HAM-6104	11
HAM-6108	11
HAM-6109	11
HAM-6110	11
HAM-6111	11
HAM-6112	11
HAM-6115	11
HAM-6116T	11
HAM-6117	11
HAM-6118	11
HAM-6120	11
HAM-6122	11
HAM-6125	11
HAM-6127	11
HAM-6129	11
HAM-6138	11
HAM-6139	11
HAM-6240	11
TR413	12
TR413AC	12
TR414	12
TR415	12

SKU	PAGE
TR416	12
TR416-50	12
TR418	12
TR501	12
TR509	12
TR510	12
TR545D	12
TR555D	12
TR571	12
TR572	12
TR573	12
TR575	12
TR618A	12
TPMSCORE-490	13
18165	13
181612	13
CAP-493C	13
14-579	13
CAP-492	13
CAP-4925	13
CAP-492NP	13
CORE-490	13
DY-160	13
HAM-2101	13
HAM-2105D3	13
HAM-2128	13
HAM-2158	13
HAM-3150	13
X17492	13
X17492-500	13
37350	14

SKU	PAGE
37355	14
ESC-50170	14
ACAI431-2	14
3FR250F	14
122019K2	14
68025	14
67817	14
67819	14
67821	14
14-3303	14
67800	14
33025	14
14-1190	14
14-3350	14
JS-79321	14
JS-79322	14
JS-79323	14
JS-79324	14
JS-79403	14
JS-60229	14
JS-60557	15
JS-79292	15
JS-79320	15
JS-79325	15
JS-79390	15
JS-79404	15
JS-79405	15
79400	15
79402	15
14-02840	15
14-1017MDT	15

SKU	PAGE
14-12051	15
14-1246D	15
14-1246DT	15
14-1291D	15
14-1291DT	15
14-18195	15
14-21215	15
14-215225	15
14-22225	15
14-TSKIT	15
CTBL11	16
CTBL14	16
CTBL14W	16
CTBL24	16
CTBL4	16
CTBL6	16
CTBL8	16
DP-090-K	16
DP7408-5	16
DP7409-10	16
DP8022	16
DP8026	16
DP8031	16
DY-DG-10B	16
HC2-10E	17
HC2-12E	17
HC2-16E	17
HC2-20E	17
HC2-24E	17
HC2-28E	17
HC2-32E	17

SKU	PAGE
HC2-36E	17
HC2-6E	17
HC2-8E	17
HC-DISPLAY	17
HCM-4E	17
HCM-6E	17
HC-Rack	17
PC-12	18
PC-58	18
PC-716	18
PC-78	18
RA-8115	18
RC-607-50	18
RC-610-25	18
RC-612-25	18
RC-613-25	18
RC-614-25	18
RC-615-25	18
RC-616-50	18
RC-617-25	18
RC-618-25	18
RC-621-25	18
RC-622-50	19
RC-623-25	19
RC-624-25	19
RC-633-25	19
RC-638-50	19
RC-639-25	19
RC-642-50	19
RC-643-50	19
RC-644-50	19

SKU	PAGE
RC-645-25	19
RC-652-50	19
RC-653-25	19
RC-654-25	19
RC-655-25	19
RC-657-15	19
RC-658-25	20
RC-659-25	20
RC-663-25	20
RC-668-25	20
RC-669-25	20
RC-670-10	20
RC-674-25	20
RC-675-25	20
RC-677-25	20
RC-679-25	20
RC-687-10	20
RC-785-25	20
RC-786-10	20
RC-790-15	20
HAM-100	21
HAM-155	21
HAM-165	21
HAM-240	21
HAM-HT190C	21
HAM-330-LO	21
HAM-333-LO	21
HAM-350-LO	21
HAM-355-LO	21
6568LC	21
QC-516	21

SKU	PAGE
QC-316	21
X14333	21
QC-14	21
X14330	21
14-C516	21
14-C316	21
X14345	21
X14346	21
QC-138	21
VTO3S	22
HAM-31015	22
X14314	22
X14305	22
X14306	22
T160	22
18147L	22
18147	22
14-47	22
14-47L	22
14-4456	22
83301B	22
83302B	22
83307B	22
83308B	22
X14923	22
HC-Rachet	22
X14399	22
X143991	22
89007	22
66-0089	22
14-833	23

SKU	PAGE
14-4463	23
14-4401	23
14-4402	23
HAM-4209N01	23
14-218P	23
14-216	23
14-4402-NL	23
S-14017	23
VIMBS1	23
M1160	23
14-22991	23
14-ERWHEEL	23
JS-96090A	23
JS-96091	23
JS-96092	23
JS-96093	23
JS-96094	23
JS-96095	23
JS-96096	23
JS-96097	23
JS-96098	23
X14301	23
14-966	23
S-22984	23
44060	24
44164	24
S-14034	24
S-14163	24
S-14165	24
79220	24
S-14033R	24

SKU	PAGE
79600	24
14329	24
X14326K	24
3M-88547	24
3M-28341	24
3M-84209	24
S-13016	24
S-13017	24
3M-7447B	24
3M-7447PRO	24
3M-07524	24
3M-07525	24
3M-07528	24
3M-21758	24
Cal-16	24
85096	24
14-1320	24
14-1321	24
85102	24
RH-102	26
RH-107	26
RH-112	26
RH-130	26
RH-314	26
S-2032	26
BC-1	26
TCW415-36	26
X14320	26
X14359	26
210N-60	26
210V-60	26

SKU	PAGE
E-12987	26
E-12989	26
E-12990	26
E-12998	26
3M-89790	26
3M-89792	26
E-12912	26
E-12913	26
E-12915	26
E-12918	26
E-12919	26
E-12921	26
E-12922	26
E-13118	26
3M-07480	28
3M-07481	28
3M-07485	28
3M-07486	28
3M-07545	28
3M-21713	28
3M-36527	28
S-12614	28
E-622TB	28
E-630TB	28
S-13005	28
S-13062	28
S-622TB	28
S-630TB	28
S-632TB	28
42701	28
42705	28

SKU	PAGE
42711	28
3M-81396	29
3M-84780	29
S-13227	29
S-13243	29
S-16206	29
S-16207	29
S-43221	29
S-6205	29
S-6305	29
E-13062	29
E-43221	29
E-43222	29
E-43223	29
E-43224	29
E-44227	29
E-43220	29
E-12615	29
14-35066	29
TL-12	32
TL-12 Deluxe	32
TLT-12	32
8169	33
8170	33
9280	33
9380	34
88794	34
88797	34
89568	34
20-15221	34
41-11	34

SKU	PAGE
41-43	34
WC522	34
WC550-4	34
WC550-8	34
WC552	34
WC559	34
WC562EXT	34
9705	35
13025	35
13065	35
13078	35
21894	35
9400-12	35
9400-14	35
9400-15	35
9400-16	35
9400-17	35
18306USA	38
18307USA	38
20024	39
25030	39
45031	39
84432	39
140247	39
03431R	39
140247P	39
14120P	39
20024P	39
25030P	39
40327-CORG	39
45031P	39

SKU	PAGE
45031USA	39
TC20025000	39
TC250	39
18279	40
81881	40
81885	40
81986	40
81995	40
184369	40
199671	40
243020	40
1000A117	40
AAA-81881	40
C-184369	40
C-184878	40
C-81986	40
C-85606398R	40
H-12916	40
H-13421	40
H-90010	40
SPOOL369	40
SPOOL986	40
TC9596	40
26252	41
184037	41
184387	41
184388	41
1827888	41
1834299	41
304G67A	41
329G95A	41

SKU	PAGE
532736-29MM	41
C-182788	41
103232	41
76079	41
2684	42
2685	42
19305	42
19306	42
24716	42
25434	42
26253	42
27636	42
28119	42
30014	42
36650	42
36992	42
101608	42
102725	42
H-10326	42
25434-BLK	42
2684Y	42
24715	43
136502	43
28389	43
400369	43
9837000	43
11400096	43
102G90A	43
113G61AY	43
1489-1167	43
47G15A-10	43

SKU	PAGE
78G13A	43
800A8	43
96G64A	43
T114096	43
T114636	43
T1182963	43
12638	44
15905	44
18207	44
21200	44
67837	44
81162	44
81574	44
81620	44
81622	44
81627	44
81712	44
81713	44
81715	44
83811	44
126381	44
181629	44
182550	44
183519	44
238548	44
4019315	44
90URE	44
HP-1102N	44
HP-4800N	44
TC182034	44
T1115	44

SKU	PAGE
T1181162	44
7259	46
7550	46
7559	46
7572	46
20415	46
C-85610105	46
JTM10129	46
T100050	46
T11506	46
X14378L	46
X14381B	46
X14700	46
X14725	46
433	47
768	47
66679	47
107790	47
108276	47
85609418	47
T100030	47
T100055	47
21523	48
82958	48
84389	48
86433	48
107985	48
184390	48
400682	48
AG107985	48
AVG3835	49

SKU	PAGE
BB12100	49
BB1250	49
BB14100	49
BB3850	49
BBR1250	49
BBR3850	49
MIL-600-3	49
MIL-715	49
MIL-728	49
MIL-785BK	49
T100012	49
T100013	49
T100014	49
T100015	49
T100017	49
T100020	49
T100025	49
T100026	49
HRS3812	49
MIL-1027-8	50
202	50
203	50
204	50
89001	50
FFFX38	50
MIL-1817	50
MIL-1818	50
MIL-698	50
MIL-699	50
MIL-716	50
MIL-727	50

SKU	PAGE
MIL-731	50
MIL-EX0500D	50
MIL-S506	50
X14319DX	50
94011	51
94012	51
WN-1704S	51
WN-1904S	51
WN-1907S	51
WN-196-B	51
WN-236	51
WN-236-B	51
WN-246-B	51
WN-288-B	51
WN-303-B	51
WN-330-B	51
WN-76-B	51
7329	52
7828	52
14324	52
VRA65-TUB	52
WL-8473	52
X11002	52
X11116R	52
X11311	52
X11321	52
X11322	52
X11712	52
X12-331	52
X13672	52
X13673	52

SKU	PAGE
X13675	52
X14318R	52
MK-80221	53
TRK-BLK	53
TRK-RED	53
X13620	53
X13621	53
X13623	53
X14008	53
X14100	53
X14101	53
X14102	53
X14128A	53
X14553	53
X14554	53
X14605	53
X14803	53
1126	54
18231	54
20101	54
81065	54
81851	54
81855	54
85185	54
181695	54
181696	54
760147	54
5327075	54
31158Y	54
H-0381/0659	54
H-401740	54

SKU	PAGE
TC0066-4	54
18120	55
18135	55
81707	55
83600	55
183606	55
2216592	55
11400098	55
11400098Y	55
18120-P	55
18135-24	55
304G15A	55
5-490223	55
800A11	55
TC183605	55
TC2505	55
18110	56
81685	56
84691	56
4800789	56
81685HD	56
KEN-31568	56
LP181035	56
TT3401	56
21010	57
22000	57
22020	57
22040	57
GAI-12941R	57
GAI-BB10L2	57
GAI-BB38L	57

SKU	PAGE
GAI-BB5A	57
GAI-BB5M	57
GAI-BB6L2	57
GAI-BBH	57
GAI-GAVTK	57
GTJ-01	57
24720	59
59408	59
82250	59
100108	59
100109	59
101402	59
183428	59
716108	59
182247-4	59
182247-4B	59
18412-4	59
18412-4B	59
18426-4	59
18426-4B	59
18495-4	59
18495-4B	59
28312-4	59
6069Y-4	59
7876Y	59
87G48A	59
H-100358BK	59
H-100358Y	59
RC1-4	59
TC183604	59
TCB304-4	59

SKU	PAGE
7110	62
7193	62
7490	62
7903	62
10006	62
10007	62
10072	62
10073	62
10074	62
10075	62
10079	62
10080	62
10081	62
10082	62
10083	62
10091	62
10008	63
10010	63
10078	63
10084	63
10085	63
10009	64
10011	64
10076	64
10077	64
10086	64
10087	64
10088	64
10089	64
10090	64
5030	65

SKU	PAGE
5031	65
5032	65
5033	65
5034	65
5035	65
5036	65
5037	65
5038	65
10012	65
7106	66
7107	66
7108	66
7178	66
7347	66
7489	66
7902	66
7904	66
10013	66
10027	66
3003	67
3004	67
7118	67
30103	67
3004-1 7/8	67
3014-1.875	67
3016-1.875	67
7347A	67
5052	68
5053	68
5054	68
5055	68

SKU	PAGE
5059	68
5060	68
5061	68
5062	68
5056-1	68
5065	69
5066	69
5069	69
5063	70
5064	70
5036-1 7/8	70
5037-1 7/8	70
5038-1 7/8	70
30105	71
30105-1.875	71
30105-2	71
3025-1	71
3026-1	71
6030	72
6031	72
6032	72
6036	72
6037	72
6038	72
6039	72
6040	72
6042	72
7040	72
7041	72
9800	72
20040	72

SKU	PAGE
70045	72
6030N	72
6041A	72
6045HD	72
80040K	72
8240	73
10043	73
10047	73
10054	73
6918	74
7101	74
7122	74
7487	74
7681	74
7687	74
7708	74
7796	74
7914	74
8701	74
24176	74
24209	74
50742	74
50778	74
CB69	74
7102	75
7109	75
7882	75
20474	75
80310	75
90327	75
2216263	75

SKU	PAGE
20474R	75
7109S	75
7796P	75
7914TH	75
7091	77
7650	77
7651	77
7701	77
7702	77
7872	77
7968	77
7970	77
8286	77
9043	77
80337	77
14-T7	77
14-T8	77
7872S	77
80337L	77
80337R	77
8286S	77
8763R	77
8763RS	77
8764L	77
8764LS	77
9043L	77
9043R	77
BH69	77
BH69B	77
BH69L	77
BH69R	77

SKU	PAGE
6001	78
7099	78
7159	78
7435	78
7682	78
7742	78
7744	78
8071	78
8077	78
20494	78
7075	79
7076	79
7077	79
7078	79
7079	79
7183	79
7996	79
9815	79
7075-3	79
7075-6	79
7080EA	79
7584	80
7854	80
7879	80
7905	80
7950	80
90450	80
6940	81
7222	81
7227	81
7821	81

SKU	PAGE
7825	81
7901	81
7906	81
7907	81
7908	81
7923	81
7936	81
4774	82
7757	82
77774	82
GBKIT70346	82
7031	83
7211	83
7318	83
7337	83
7913	83
7918	83
7919	83
8156	83
8157	83
8312	83
8670	83
8760	83
9847	83
77748	83
77755	83
77997	83
3036	84
5040	84
5041	84
5042	84

SKU	PAGE
5532	84
7161	84
7670	84
7712	84
7868	84
8646	84
8647	84
433673	84
7161COG	84
7175AL-B	84
J-240B	84
7085	85
7086	85
7087	85
7120	85
7121	85
7125	85
7411	85
7492	85
8845	85
78529	85
7868X	85
2017	86
2066	86
7024	86
7035	86
7088	86
7364	86
7843	86
70346	86
7175AL	86

SKU	PAGE
7784-1	86
7009	87
7168	87
7377	87
7378	87
7381	87
7831	87
73082	87
433641	87
4135	88
7033	88
7058	88
7138	88
7141	88
7142	88
7165	88
7220	88
7221	88
7775	88
7790	88
7836	88
7974	88
9822	88
70830	88
83715	88
204240	88
29822-1	88
70830XL	88
7211A	88
CTA1435	88
OS3163-BLUE	88

SKU	PAGE
OS3163-SIL	88
OS3164	88
3042	89
5005	89
7022	89
7064	89
7084	89
7218	89
7481	89
7592	89
7747	89
7818	89
7893	89
7963	89
8682	89
8735	89
8736	89
23026	89
47719	89
66704	89
90082	89
90686	89
433693	89
8633Long	89
M17556	89
4025	92
4026	92
4027	92
4029	92
3101-40	92
3102-40	92

SKU	PAGE
3103-40	92
3104-40	92
3105-40	92
3106-40	92
3107-40	92
3108-40	92
3109-40	92
4021-40	92
4022-40	92
4023-40	92
4024-40	92
4030-40	92
3110-40	93
4020-40	93
90041	94
8825	94
10058	94
13080	94
13082	94
90028	94
90036	94
90038	94
90040	94
2069-28	94
2069-40	94
3100-40	94
8252-40	94
8253-40	94
8476-40	94
JF4/550-28	94

SKU	PAGE
JF4/550-36	94
JF4/550-40	94
29069-28	95
29069-36	95
29069-38	95
29069-40	95
9240-28	95
9240-40	95
9250-28	95
9250-36	95
9250-40	95
9251-28	95
9251-36	95
9251-40	95
9252-28	95
9252-36	95
9252-40	95
9253-28	95
9253-36	95
9253-40	95
9254-28	95
9254-36	95
9254-40	95
9255-28	95
9255-36	95
9255-40	95
9256-28	95
9256-36	95
9256-40	95
9257-28	95
9257-36	95

SKU	PAGE
9257-40	95
2410	96
2411	96
2412	96
2050-28	96
2050-40	96
2051-28	96
2051-40	96
2095-28	96
2095-36	96
2409-28	96
2409-36	96
2409-40	96
2415-28	96
2415-36	96
2415-40	96
8252-36	96
8253-36	96
8476-36	96
8820-28	96
2057-28	97
2057-36	97
2057-40	97
2058-28	97
2058-36	97
2058-40	97
2059-28	97
2059-36	97
2059-40	97
2060-28	97
2060-36	97

SKU	PAGE
2060-40	97
2061-28	97
2061-36	97
2061-40	97
20-5LUG-40	98
20-PROS-40	98
20-TIP-B	98
20-TIP-C	98
20-TIP-CL	98
20-TIP-E	98
20-PROA-40	99
3100PROS-40	100
20-LCSA-40	102
20-LCSS-40	102
20-AUTO-40	103
20-CSPS-40	103
20-GEAR-40	103
2374	104
7543	104
812103	104
3630T	104
4030T	104
UWT-1200-1	104
UWT-1200HP	104
UWT-900-52	104
UWT-900-72	104
UWT-PL-1	104
UWT-PL-2	104

SKU	PAGE
UWT-PL-42	104
UWT-PLIERS	104
UWT-PL-RK	104
3630	105
3830	105
4030	105
4040	105
4080	105
9383	105
10542	105
30911	105
53921	105
61572	105
78167	105
113113	105
H-106822	105
H-53921	105
H-753531	105
TG08	105
TI79	105
14-4459	106
14-9909	106
3M-55428	106
3M-61403	106
3M-61405	106
3M-61479	106
3M-61480	106
3M-61592	106

SKU	PAGE
3M-99099	106
3M-99100	106
3M-99101	106
3M-99427	106
3M-99428	106
3M-99429	106
3M-99473	106
HAM-3121A	107
WWH-CAP	107
75023	107
PT-7216	107
TI39	107
WW-FE-0023-BLK	107
WW-FE-0023-GRY	107
WW-FE-2552-BLK	107
WW-FE-2552-GRY	107
WW-FE-5035-BLK	107
WW-FE-5035-GRY	107
WWH-36	107
WW-ROLL-25640-BLK	107
WW-ROLL-25640-GRY	107
WW-ROLL-50320-BLK	107
WW-ROLL-50320-GRY	107
6527	111
6530	111
6531	111
6501-4	111
6502-4	111

SKU	PAGE
6503-4	111
6504-4	111
6505-4	111
6506-4	111
6507-4	111
6508-4	111
6509-4	111
6510-4	111
6511-4	111
6512-4	111
6513-4	111
6514-4	111
6515-4	111
6516-4	111
6517-4	111
6518-4	111
6519-4	111
6520-4	111
6521-4	111
6522-4	111
6523-4	111
6524-4	111
6525-4	111
6526-4	111
6528-4	111
6529-4	111



Company Profile



MT-RSR is a precision parts manufacturer specializing in the automotive parts market. Our portfolio includes many well-known OEM brands. Based in Minneapolis, MN, the heartland of American manufacturing. Our passion for the tire and auto shop equipment industry pulled us deeper into the market as not only a manufacturer but a direct supplier. Our mission is to be the go-to supplier for all auto shop supply needs. At MT-RSR, we strive to provide our customers with the finest products made right here in the USA.

Address:

7700 N 68th Ave
Brooklyn Park, MN 55428

Phone:

(800) 811-0926

Mail:

sales@mt-rsr.com