



## GLASS TILE INSTALLATION & CARE

### INTRODUCTION

This thoroughly modern collection of glass tiles is characterised by the clean, crisp lines of a machine cut edge and the luminous way colour filters through the material. The colour is sprayed on one side for a uniform finish and consistency across batches.

Glass tiles are supplied in 10 sizes and two finishes (gloss and matte). The matte finish is only available in 10cm or larger sizes, so both the mosaic and liner formats can only be ordered in gloss finish.

All glass tiles are cut and supplied based on 2mm grout lines (so a 10cm tile is actually 9.8cm).

Tiles 10cm or larger can be ordered with a mitred edge if required for your installation. There is a surcharge for mitring edges. The mosaic tile and the liner cannot be mitred by the factory in advance. These need to be installed as supplied (or mitred on site at your own discretion).

---

### SURFACE PREPARATION

It is important to prepare a well compressed and dry tile foundation, clear from grease, oil, dust and scaling.

If you are using tiles outdoors or in a wet environment, the substrate should be prepared with a waterproof membrane.

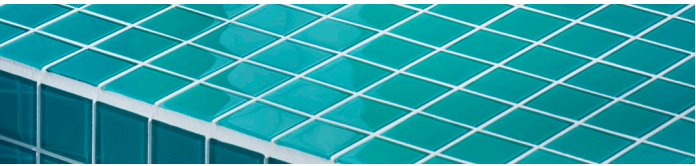
We suggest that you test the humidity level with an appropriate instrument, and it must not be higher than 2%. If the installation surface has any residual damp the tile can show spots or colour changes.

Glass tiles should be applied to a consistent coloured background and a very flat surface. You may wish to paint the surface white and then seal with a PVA or equivalent.

---

### SELECTION

There can be a small degree of variation in this product that is inherent and desirable. We recommend opening all boxes at the start and planning your layout on a dry surface first.



## ADHESIVES & GROUT

The glass tiles should be installed with a minimum of 2mm grout lines (all the tiles are formatted for this). You should not use smaller than 2mm spacing. You can choose to install with spacing larger than 2mm : this is design decision, not a function or technical decision.

There can be some small size variation in these tiles. Glass tiles will also expand and contract more than ceramic or cement tiles – so you must use grout lines to allow for this. Glass tiles cannot be butt-jointed.

The grout and adhesive selected should ideally be the same colour. Some products available can be used as both an adhesive and a grout.

Glass tiles should be fixed to the surface with a notched trowel deep enough to cover the back of the tile completely.

Insert 2mm minimum spacers as you go with a 2mm spacer at starting edge. Clean excess adhesive after 1 metre with clean water and a soft sponge, leaving all the joints clean and ready for grouting.

The same 2mm gap should be left for all internal corners and around trims. This allows for expansion and contraction and as a result, less chance of tile cracking or chipping.

When you complete grouting you should dry polish the surface. Then fill the gaps, corners and trims with silicon or mastic colour of your choice. Preferably the same colour as the grout. Mapei grout and silicon are always good choice as they dry relatively fast. Because glass tiles are not porous, grout will take longer to dry on a glass tile installation than a ceramic or cement tile installation.

Well know and widely available brands of adhesive and grout include:

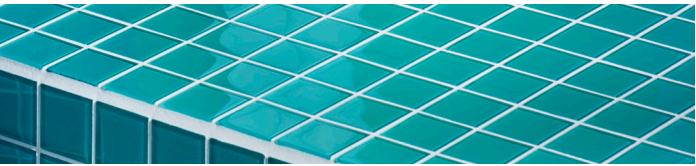
Mapei – <https://www.mapei.com/gb/en/home-page>

Litokol – <https://www.litokol.it/en/>

Kerakoll – <https://www.kerakoll.com/en/>

If silicone is required as part of your installation use only the kind “suitable for mirrors”.

Note: we do not recommend using clear or reflective grouts. In our experience this style of product is very difficult to work with. You should only work with this product if you are already familiar with using it.

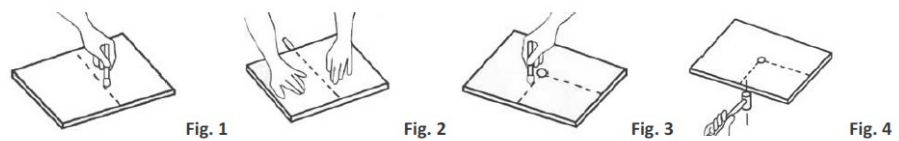


## CUTTING

Glass tiles 10cm or larger can be pre-ordered with mitred edges for external corners if required.

The glass mosaics and tiles can be used as ordered, with a straight clear edge exposed on external corner. Unlike glazed ceramic tiles or cement tiles, the glass tile body and its edge is typically very neat and clean. Some mosaic edges may show spots of paint on external edges. If so, any coloured paint can be removed using a Stanley knife blade and sand paper

Cutting tiles can be done by hand or with a standard glass cutter (also called clinker).



**Fig. 1 Fig. 2 Fig. 3 Fig. 4**

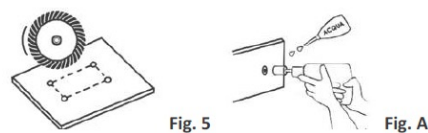
Clean cuts are made with a normal glasscutter. Cut the glass with the glasscutter (Fig. 1), then open the glass with hand pressure at the sides of the cut (Fig. 2), inserting a wedge at the beginning of the cut. The sharp edge can be chamfered with glass paper.

For angled cuts use a wet tile saw or a porcelain diamond blade on a Grinder. The edges can be sanded back with sandpaper, being careful not to scratch the face of the tiles. Mitred edges can be achieved with the same tools.

Angle cuts are made by drilling a small hole at the intersection of the two cuts. Then you cut the glass as in (Fig.3) and remove the cut part by tapping the area with a small hammer (Fig. 4).

### Fig. 5

Internal cuts are made by drilling 4 small holes at the intersection of the angles of the area to be cut. Then you cut with diamond disk for glass (Fig. 5). Holes are drilled with diamond cutters (Fig. A). Fit the bit on a slow turning drill. Do not press excessively while drilling.



Remember to wet the bit constantly and to avoid the hammer effect.



## TILE SPACING

These glass tiles should be installed with a minimum of 2mm grout lines (all the tiles are formatted for this). You should not use smaller than 2mm. You can choose to install with larger than 2mm grout lines: this is a design decision, not a functional or technical decision.

Glass expands and contracts far more than ceramics or porcelain and is more prone to chipping and cracking. Glass tiles should not be installed butt jointed.

---

## SEALANTS

Are not required with this product.

---

## OTHER NOTES

Always install at least 3cm away from a heat source (if behind a hob or fireplace). This is to avoid cracking.

Always take care to wear gloves and protective eye glasses when cutting glass tiles.

---

## MAINTENANCE

### Daily or weekly cleaning

The tiles should be regularly washed with mild soap and water or neutral cleaner. Neutral cleaners are devoid of acids, caustics, harsh fillers, or abrasives that could scratch the surface of the tile.

---

## RESOURCES

Litokol – <https://www.litokol.it/en/>  
Kerakoll – <https://www.kerakoll.com/en/>  
Mapei- <https://www.mapei.com/gb/en/home-page>