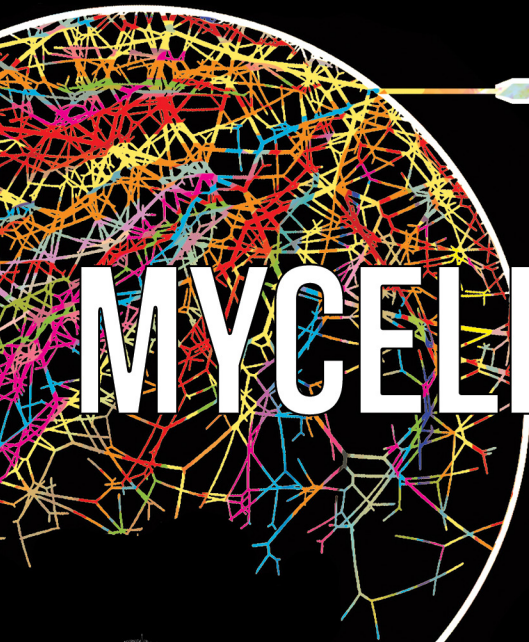


GROW MUSHROOMS AND SPREAD *the* SPORE



# MYCELIATE!

  
NORTH SPORE.*com*

STERILIZED GRAIN BAG  
*with* INJECTION PORT  
INSTRUCTIONS

## THANK YOU *for* PURCHASING A NORTH SPORE STERILE SUBSTRATE...

WE HOPE THAT THIS IS JUST THE BEGINNING OF A LONG AND FRUITFUL RELATIONSHIP WITH NORTH SPORE SUBSTRATES. IF YOU HAVEN'T DONE SO ALREADY, TAKE A MINUTE TO REVIEW OUR POLICY ON USING NORTH SPORE PRODUCTS FOR LAWFUL PURPOSES AND WATCH OUR VIDEOS ON MUSHROOM CULTIVATION FOR IDEAS AND INSPIRATION!

SIGN UP FOR OUR NEWSLETTER ON OUR WEBSITE AND FOLLOW US ON SOCIAL MEDIA!



@NORTHSPOREMUSHROOMS



FACEBOOK.COM/NORTHSPORE



YOUTUBE.COM/NORTHSPORE



@NORTHSPORE



/NORTHSPOREMUSHROOMS

*step 1)*

## *source a* CULTURE OR SPORE SYRINGE AND SANITIZE YOUR BAG!

START BY VISITING [NORTHSPORE.COM](https://northspore.com) AND WATCHING OUR WALK-THROUGH VIDEO. OR USE YOUR SMARTPHONE TO SCAN THE QR CODE!

[NORTHSPORE.COM/PAGES/MONO-TUB-CULTIVATION-METHOD-WALKTHROUGH](https://northspore.com/pages/mono-tub-cultivation-method-walkthrough)

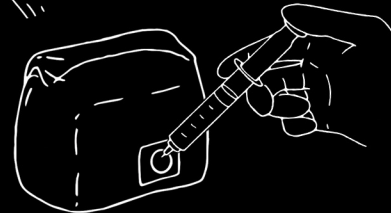


BEFORE INJECTING INTO YOUR STERILIZED GRAIN BAG, MAKE SURE TO WATCH THE VIDEO ABOVE WHICH WILL DEMONSTRATE PROPER SANITATION. IT IS VERY IMPORTANT THAT YOU DO NOT INADVERTENTLY INTRODUCE ANY MOLD SPORES INTO YOUR STERILE BAG. POOR SANITATION OR COMPROMISED SPORE/CULTURE SYRINGES WILL RESULT IN CONTAMINATION!



SANITIZE WITH 70-90% ALCOHOL

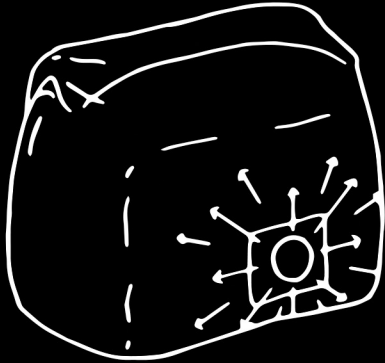
INJECT 2.5-5 CC  
OF CULTURE OR SPORE SYRINGE  
THROUGH THE INJECTION PORT



step 2)

## ALLOW CULTURE *to grow* AND THEN BREAK IT UP!

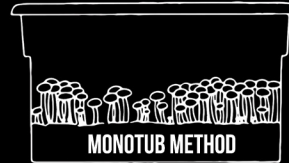
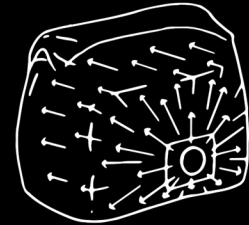
WITHIN A FEW WEEKS OF INJECTING YOUR STERILIZED GRAIN BAG YOU SHOULD START TO SEE SOME MYCELIAL GROWTH. THIS USUALLY PRESENTS AS A WHITE WISPY MATERIAL THAT WILL GROW SLOWLY OUTWARDS FROM THE POINT OF INJECTION. WHEN THE MYCELIUM HAS GROWN ON AT LEAST 30% OF THE GRAIN IN THE BAG, YOU MAY CHOOSE TO MASSAGE AND BREAK UP THE MYCELIATED GRAIN AND MIX IT INTO THE STILL UNCOLONIZED GRAIN WHILE BEING CAREFUL TO NOT BREAK OR COMPROMISE THE SEALS ON THE BAG. CONTINUE TO ALLOW THE BAG TO RECOLONIZE UNTIL IT IS COMPLETELY MYCELIATED.



step 3)

## USING FULLY *colonized* MASTER GRAIN SPAWN

USE YOUR FULLY COLONIZED GRAIN SPAWN TO INOCULATE OTHER NORTH SPORE STERILE SUBSTRATES LIKE BOOMR BAG OR WOOD LOVR! YOU CAN MAKE A MONOTUB, MARTHA TENT, OR USE YOUR SPAWN TO INOCULATE AND GROW MUSHROOMS DIRECTLY FROM THE SUBSTRATE BAG!



## TROUBLESHOOTING *and* CONSIDERATIONS

### SATISFACTION GUARANTEED

IF YOUR GRAIN BAG IS AT ALL COMPROMISED WE WILL REPLACE IT! BE SURE TO INSPECT YOUR BAG BEFORE USE FOR ANY ISSUES FROM SHIPMENT

### YOU'LL NEED TO LET YOUR BAG FULLY COLONIZE BEFORE USE

YOU CAN USE EITHER A SPORE OR CULTURE SYRINGE TO INOCULATE YOUR GRAIN BAG. EXPECT TO WAIT AT LEAST A FEW WEEKS BEFORE YOUR GRAIN IS FULLY COLONIZED. COLONIZATION TIME IS DEPENDENT ON THE SPECIES YOU ARE GROWING AND THE VIABILITY OF YOUR CULTURE!

### INTENDED FOR EDIBLE MUSHROOM CULTIVATION ONLY!

NORTH SPORE'S PRODUCTS WILL BE USED ONLY FOR LAWFUL PURPOSES!

### GRAIN BAGS ARE SHELF-STABLE FOR UP TO 6 MONTHS

YOU SHOULD FOLD DOWN FLAP TO REDUCE MOISTURE LOSS THROUGH THE FILTER PATCH  
KEEP BAGS SOMEPLACE COOL AND OUT OF DIRECT SUNLIGHT

## SHOW US *your* GROW!

WE LOVE SEEING YOUR MUSHROOMS GROWING AND HOW YOU USE THEM! TAG US ON INSTAGRAM @NORTHSPOREMUSHROOMS AND USE OUR HASH-TAG #SPREADTHESPORE FOR CHANCES TO WIN PRIZES, SPECIAL DEALS, AND MORE!

### MIND LEAVING US A REVIEW?

ANY FEEDBACK IS GOOD FEEDBACK.

IF YOU LOVED YOUR GRAIN BAG LET US KNOW...

IF YOU THINK IT COULD BE IMPROVED, ALSO LET US KNOW!

WE APPRECIATE PRODUCT REVIEWS.

THEY HELP US CONTINUALLY IMPROVE AND GUIDE US IN THE PROCESS OF MAKING THE BEST MUSHROOM SUPPLIES AVAILABLE.

THANK YOU!!!

## *product* DISCLAIMERS

'NORTH SPORE,' ITS LOGO, 'BOOMR BAG', AND 'SPREAD THE SPORE' ARE REGISTERED TRADEMARKS OF NORTH SPORE LLC.

MUSHROOMS PRODUCE SPORES AS THEY DEVELOP. THIS IS A NATURAL MEANS OF REPRODUCTION FOR THE FUNGUS. THEY USUALLY APPEAR AS A DUSTY SURFACE ON YOUR GROW KIT BENEATH THE MUSHROOM CAPS. **PEOPLE WITH ALLERGIES OR COMPROMISED IMMUNE SYSTEMS MAY WANT TO CONSIDER PUTTING FRUITING MUSHROOMS OUTDOORS OR IN A WELL-VENTILATED AREA AS AIRBORNE SPORES SOMETIMES CAUSE RESPIRATORY IRRITATION.** SPORES MAY ALSO CAUSE IRRITATION FOR SOME NON-ALLERGIC OR IMMUNE COMPROMISED MUSHROOM GROWERS, THOUGH THIS IS RARE. HARVESTING MUSHROOMS WHILE STILL IN THEIR YOUNGER GROWTH STAGES WILL REDUCE THE OVERALL SPORE LOAD.

NORTH SPORE CANNOT AND DOES NOT PROMISE THAT ITS PRODUCTS WILL YIELD ANY PARTICULAR RESULTS FOR YOU. NORTH SPORE WILL NOT BE LIABLE TO YOU OR TO ANY OTHER PERSON FOR ANY DAMAGES OF ANY KIND IN CONNECTION WITH THE USE OF OUR PRODUCTS, AND WE MAKE NO WARRANTIES OF ANY KIND, INCLUDING WARRANTIES OF MERCHANTABILITY OR FITNESS FOR A PARTICULAR PURPOSE, RELATING TO OR ARISING FROM THE USE OF OUR PRODUCTS, EXCEPT AS REQUIRED BY LAW.