



CAMBRIDGE SATCHEL

ENGLAND

SS24: HIGH TEA

BLUEBERRY SAFFIANO WITH GOLD

FONDANT PINK SAFFIANO WITH NICKEL

VANILLA WITH GOLD

BLUEBERRY & FONDANT SAFFIANO WITH NICKEL

BLUEBERRY SAFFIANO WITH GOLD

THE BOWLS BAG

Originally intended as a carrier for two wooden bowls, this bag is ideal for modern day life. We have replaced the traditional buckles with magnetic closures whilst maintaining the exact same look. To prevent the bag rolling we have added small feet and a detachable shoulder strap gives versatility and functionality.



THE PUSH LOCK

This irresistible little bag is an essential part of your night out armoury. Perfectly petite enough to be held as a clutch for a very special occasion or worn effortlessly at your side with its detachable shoulder strap for an evening on the town. The bag closes with a timeless pushlock for a touch of retro glamour.



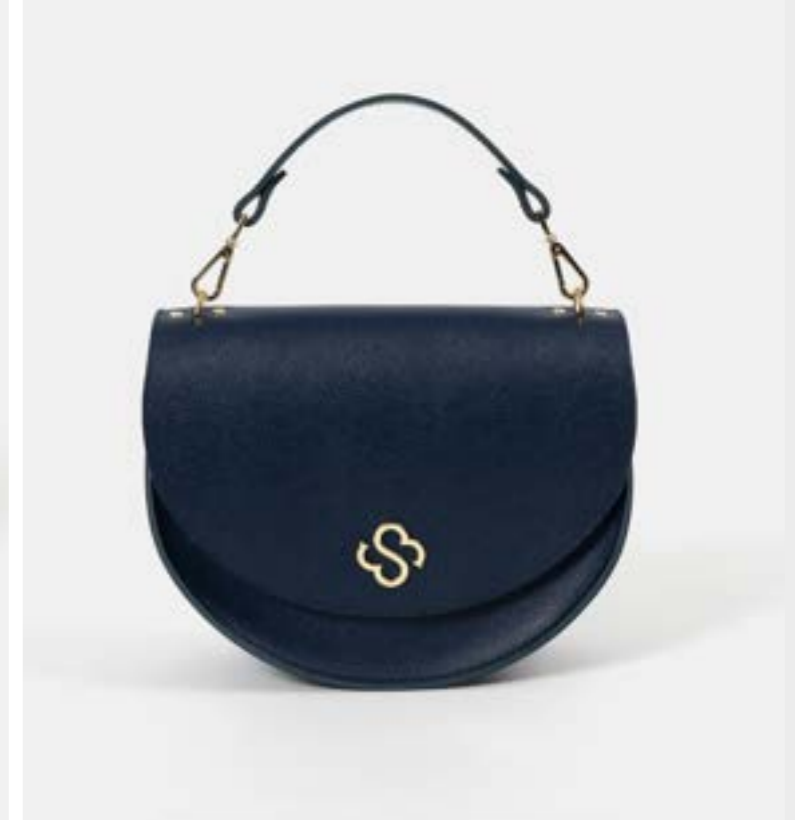
THE 15" BATCHEL

Spacious, unisex and practical, the 15 Inch Batchel has all of the features of our beloved Satchel but with the added convenience of a top handle, allowing it to be carried much like a briefcase. This large version is particularly popular as a work bag; it's the perfect size for many laptops, A4 documents and everyday essentials. Generously proportioned but engineered to be always neat and never cumbersome.



THE KATE

This sophisticated semi-circular bag is equipped with a detachable top handle and detachable crossbody strap for the ultimate versatility. Embellished with our monogram in glinting hardware, The Kate makes for a classy statement piece with ample space for essentials.



THE MINI TOTE

Those who have ever said that a Tote needs to be big have clearly never set eyes upon The Mini Tote. For the little bag lovers who like the ease of accessing their belongings, this bag can be grabbed in a hurry by its two top handles or can sit snugly by your side on a detachable, adjustable strap. Deceptively spacious, boxy and never bulky.



THE TOTE

In a world where totes are (quite rightly) everywhere, we knew that creating the perfect version with our dose of Cambridge Satchel DNA was paramount. Structured, stylish, and strong enough to hold laptops, heavy books and water bottles, The Tote takes care of it for you, whether that's for business or pleasure.



THE MINI BOWLS

Introducing this distinctive style in mini form for your little ones! We're sure you will love this more compact version of our barrel bag shaped style. We have maintained the height but reduced the width of the original to give it a more compact appearance,

THE MINI POPPY

The perfect miniaturisation of our most popular bag, The Poppy, this mini version takes the chic shape and clever design of the original and distils it further into the perfect night-time bag. Perfectly balanced by your side, the Mini Poppy's pushlock closure opens swiftly to reveal an interior spacious enough to carry the essential elements of an unforgettable night - your favourite fragrance, your phone and that killer mascara.



THE POPPY

In the long development process of The Doctors Bag, we were inspired to create The Poppy - a genius little bag that has become one of our bestsellers. We've taken the functional ease of The Doctors Bag and the neat, well-groomed finish of our leather satchels and made a bag that is, quite simply, chic. The Poppy closes with a satisfying click thanks to its pushlock closure, an added note of vintage glamour.



FONDANT PINK SAFFIANO WITH NICKEL



THE KATE

This sophisticated semi-circular bag is equipped with a detachable top handle and detachable crossbody strap for the ultimate versatility. Embellished with our monogram in glinting hardware, The Kate makes for a classy statement piece with ample space for essentials.

- Handcrafted in England by expert artisans
- 100% leather bag with branded pale gold hardware
- Strong magnetic closure
- Interior slip pocket
- Detachable top handle
- Detachable and adjustable shoulder strap
- Embossed brand logo on reverse and on interior slip pocket
- Includes dust bag for protection from sunlight and scratches

VANILLA WITH GOLD

THE MICRO SACHEL

The miniscule version of our classic Satchel, equipped with a top handle. This bag boasts the same level of quality craftsmanship as our standard-size products, but in micro size. Compact and fuss-free, wear it casually with its detachable strap for an air of cool, or by hand to brighten up an evening outfit.



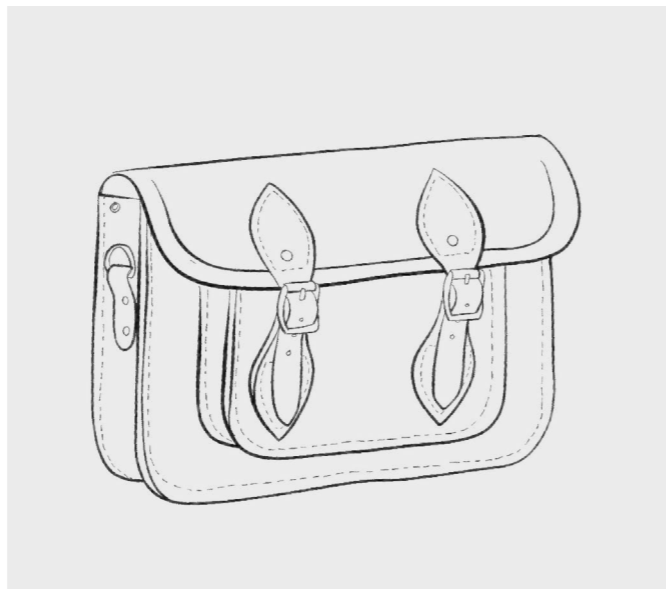
THE MINI SACHEL

Made with the same care and precision as our standard sized Satchel, this smaller version features a handy top handle (actually qualifying it as a Batchel - but let's not get into that) as well as a slim, detachable and adjustable shoulder strap, making it the perfect day bag. Grab it when you're dashing out to meet friends in the park or hopping on the back of a bicycle made for two.



THE 11" SACHEL

A reinterpretation of the classic British school bag, this new take pays homage to the heritage of the bag but updates the design by refining the dimensions and adding convenient magnetic closures (rather than the buckle fastenings of a traditional Satchel).



THE ISLA

Perfect for fun festivals and carefree days outdoors, this heritage bag will be with you for many summers to come. Inspired by the Scottish Sporrán (which is Gaelic for purse!), this eccentric little bag is just as practical and lightweight. Originally designed as an essential pocket to hold coins, food supplies and ammunition, our version retains its simplicity and holds everything you need for a day's summer adventure: keys, phone, cardholder and more.



THE MINI POPPY

The perfect miniaturisation of our most popular bag. The Poppy, this mini version takes the chic shape and clever design of the original and distils it further into the perfect night-time bag. Perfectly balanced by your side, the Mini Poppy's pushlock closure opens swiftly to reveal an interior spacious enough to carry the essential elements of an unforgettable night - your favourite fragrance, your phone and that killer mascara.

THE POPPY

In the long development process of The Doctors Bag, we were inspired to create The Poppy - a genius little bag that has become one of our bestsellers. We've taken the functional ease of The Doctors Bag and the neat, well-groomed finish of our leather satchels and made a bag that is, quite simply, chic. The Poppy closes with a satisfying click thanks to its pushlock closure, an added note of vintage glamour.





THE TRAVELLER

With its distinctive shape and utilitarian side pockets, The Traveller is our reimagining of the classic Camera Bag used by travel photographers in the golden age of travel writing. Its generously proportioned interior and front pocket provide plenty of room for the kit needed for a day in the workday wilderness or a longer week-end expedition. When sitting steadily by your side, The Traveller opens to give easy access to everything within, ready for any adventure.

THE MINI SACHEL

Made with the same care and precision as our standard sized Satchel, this smaller version features a handy top handle (actually qualifying it as a Batchel - but let's not get into that) as well as a slim, detachable and adjustable shoulder strap, making it the perfect day bag. Grab it when you're dashing out to meet friends in the park or hopping on the back of a bicycle made for two.

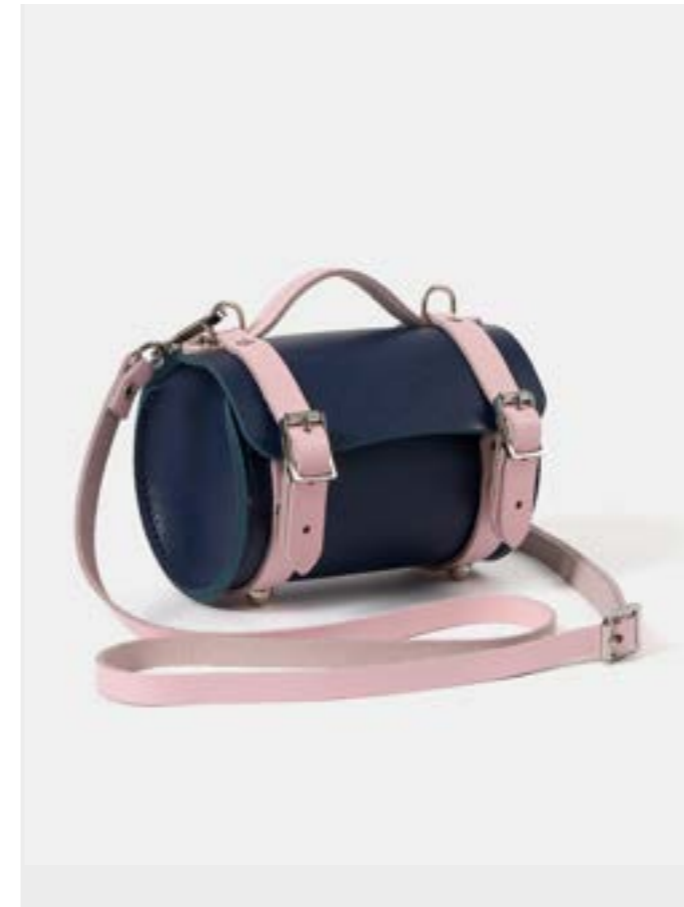


THE 11" BATCHEL

The Batchel bears all the hallmarks of a Cambridge Satchel but adds some of the practical features of a briefcase; including a nifty top handle and adjustable shoulder strap.

The Batchel is one of our best-selling bags and for good reason. This style features a useful interior front pocket for those items you need to put your hands on quickly, such as your wallet, your keys, or your journal (when inspiration strikes!).

BLUEBERRY & FONDANT PINK SAFFIANO WITH NICKEL



THE MICRO BOWLS

The minuscule version of our classic Bowls Bag. This bag boasts the same level of quality craftsmanship as our standard-size products, but in micro size. Compact and fuss-free, wear it casually with its detachable strap for an air of cool, or by hand to brighten up an evening outfit.

CHARMS



THE BISCUIT CHARM



THE TEAPOT CHARM



THE TEACUP CHARM



SS24: TROPICO

ORANGEADE CELTIC GRAIN WITH GOLD

SEA BLUE WITH NICKEL

CALYPSO WITH GOLD

ORANGEADE WITH GOLD

THE MINI TOTE

Those who have ever said that a Tote needs to be big have clearly never set eyes upon The Mini Tote. For the little bag lovers who like the ease of accessing their belongings, this bag can be grabbed in a hurry by its two top handles or can sit snugly by your side on a detachable, adjustable strap. Deceptively spacious, boxy and never bulky.



THE MINI SATCHEL

Made with the same care and precision as our standard sized Satchel, this smaller version features a handy top handle (actually qualifying it as a Batchel - but let's not get into that) as well as a slim, detachable and adjustable shoulder strap, making it the perfect day bag. Grab it when you're dashing out to meet friends in the park or hopping on the back of a bicycle made for two.



THE MINI POPPY

The perfect miniaturisation of our most popular bag, The Poppy, this mini version takes the chic shape and clever design of the original and distils it further into the perfect night-time bag. Perfectly balanced by your side, the Mini Poppy's pushlock closure opens swiftly to reveal an interior spacious enough to carry the essential elements of an unforgettable night - your favourite fragrance, your phone and that killer mascara.



THE BOWLS BAG

Originally intended as a carrier for two wooden bowls, this bag is ideal for modern day life. We have replaced the traditional buckles with magnetic closures whilst maintaining the exact same look. To prevent the bag rolling we have added small feet and a detachable shoulder strap gives versatility and functionality.



THE KATE

This sophisticated semi-circular bag is equipped with a detachable top handle and detachable crossbody strap for the ultimate versatility. Embellished with our monogram in glinting hardware, The Kate makes for a classy statement piece with ample space for essentials.





THE MINI POPPY

The perfect miniaturisation of our most popular bag, The Poppy, this mini version takes the chic shape and clever design of the original and distils it further into the perfect night-time bag. Perfectly balanced by your side, the Mini Poppy's pushlock closure opens swiftly to reveal an interior spacious enough to carry the essential elements of an unforgettable night - your favourite fragrance, your phone and that killer mascara.



THE POPPY

In the long development process of The Doctors Bag, we were inspired to create The Poppy - a genius little bag that has become one of our bestsellers. We've taken the functional ease of The Doctors Bag and the neat, well-groomed finish of our leather satchels and made a bag that is, quite simply, chic. The Poppy closes with a satisfying click thanks to its pushlock closure, an added note of vintage glamour.



THE 11" BATCHEL

The Batchel bears all the hallmarks of a Cambridge Satchel but adds some of the practical features of a briefcase; including a nifty top handle and adjustable shoulder strap. The Batchel is one of our best-selling bags and for good reason. This style features a useful interior front pocket for those items you need to put your hands on quickly, such as your wallet, your keys, or your journal (when inspiration strikes!).

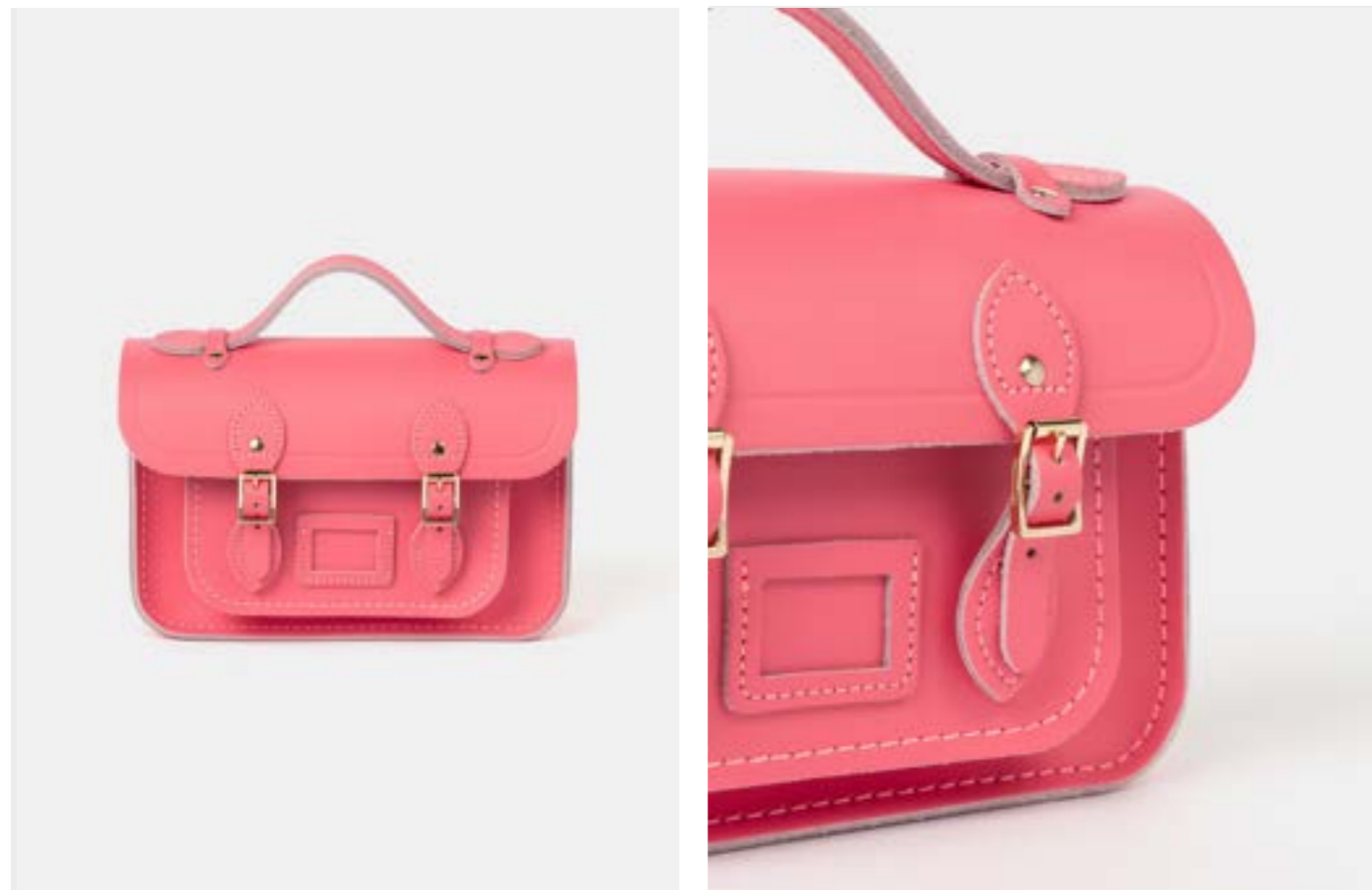
SEA BLUE WITH NICKEL



THE ISLA

Perfect for fun festivals and carefree days outdoors, this heritage bag will be with you for many summers to come. Inspired by the Scottish Sporrán (which is Gaelic for purse!), this eccentric little bag is just as practical and lightweight. Originally designed as an essential pocket to hold coins, food supplies and ammunition, our version retains its simplicity and holds everything you need for a day's summer adventure: keys, phone, cardholder and more.

CALYPSO WITH GOLD



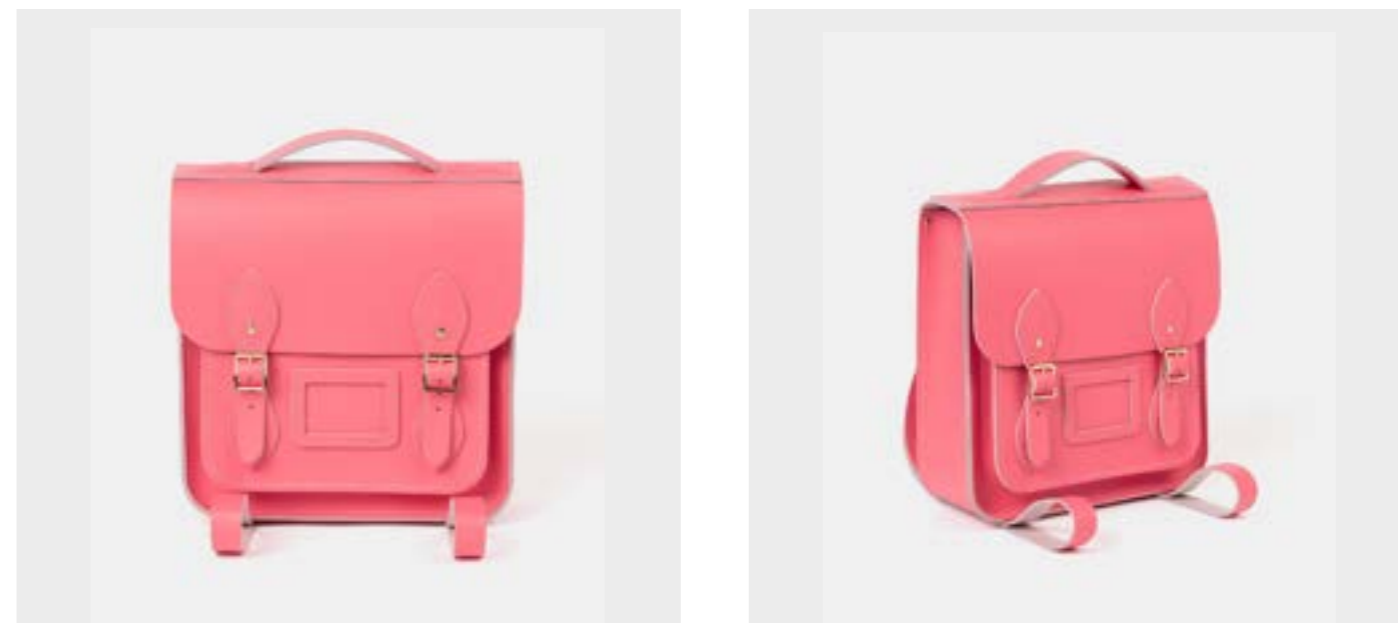
THE MINI

Made with the same care and precision as our standard sized Satchel, this smaller version features a handy top handle (actually qualifying it as a Batchel - but let's not get into that) as well as a slim, detachable and adjustable shoulder strap, making it the perfect day bag. Grab it when you're dashing out to meet friends in the park or hopping on the back of a bicycle made for two.



THE 11" SATCHEL

A reinterpretation of the classic British school bag, this new take pays homage to the heritage of the bag but updates the design by refining the dimensions and adding convenient magnetic closures (rather than the buckle fastenings of a traditional Satchel).



THE SMALL PORTRAIT BACKPACK

A spin on the classic Satchel, this refined bag is for those with a love of vintage style but an appreciation for comfort and modern convenience. With its top handle and adjustable shoulder straps this is a truly versatile bag for those who love to travel light. Backpacks may have been originally designed for utility, but that doesn't mean they can't be beautiful.

CHARMS



THE WATERMELON CHARM



THE LEMON CHARM



THE ORANGE CHARM

CAMBRIDGE SATCHEL

ENGLAND

