



**CAMBRIDGE SATCHEL**

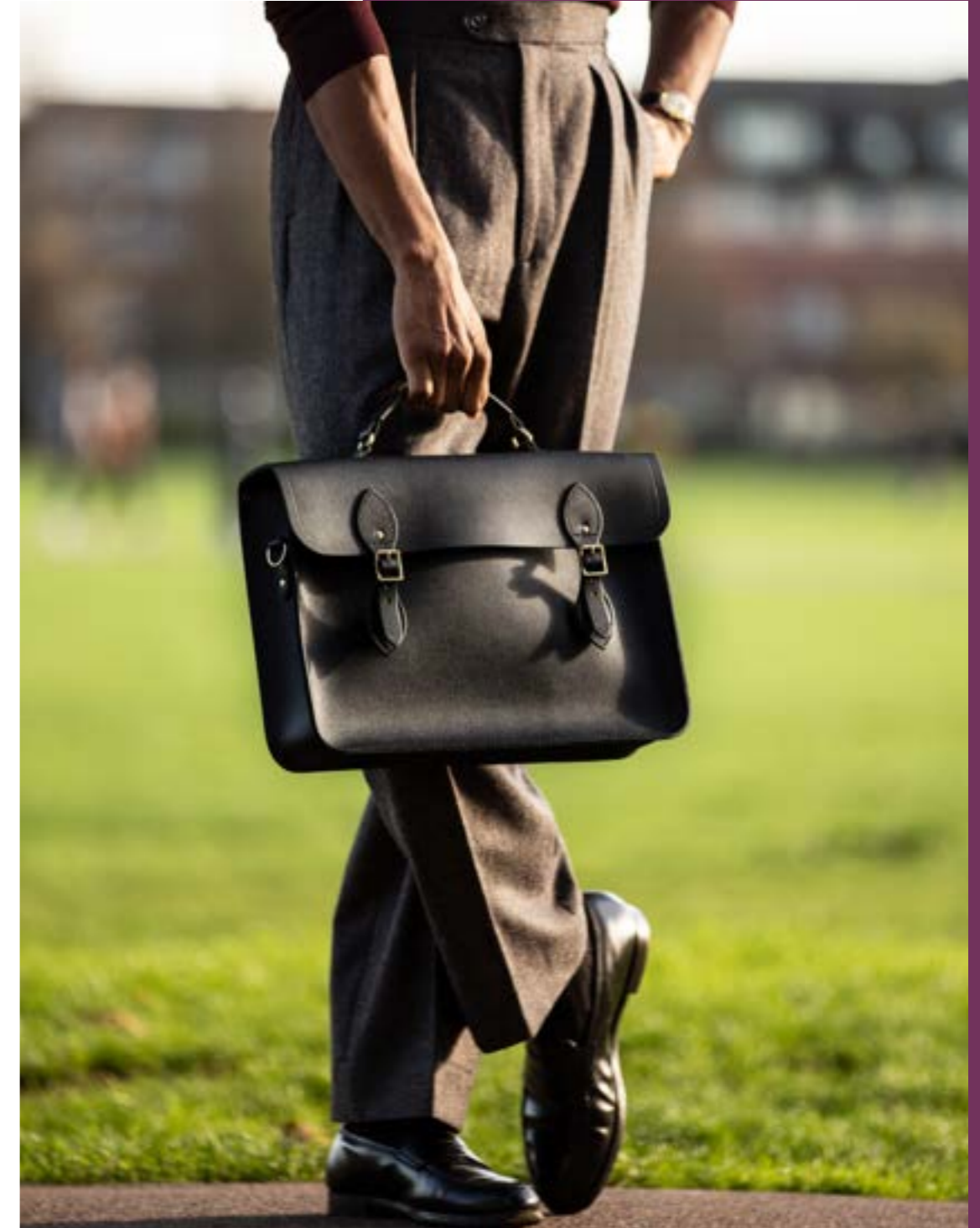
ENGLAND



*The Mini  
in Racing Green*

## **CAMBRIDGE SATCHEL STORY**

Cambridge Satchel is a female-founded company, founded with a £600 budget in 2008. It was an instant hit with the digital fashion community, fast becoming a heritage label known for reviving the classic satchel. From the kitchen table to Buckingham Palace and beyond, Cambridge Satchel's now extensive collection is handcrafted in England and continues to support British craftsmanship.



*The Large Briefcase  
in Black Saffiano*



## HANDCRAFTED IN ENGLAND

Our bags are lovingly handcrafted by a team of skilled leather specialists in our UK workshop in the heart of England. We strongly believe in supporting British craftsmanship and preserving important trade skills which are beautifully displayed in our varied product collection.



**“THE DARLING  
OF THE BRITISH  
MANUFACTURING  
INDUSTRY”**

*- How do They Do It? Discovery Channel*



# A STYLE THAT WILL STAND THE TEST OF TIME



**The Mini One Buckle**  
 Colour: Oxblood  
 Leather: Split  
 TMBNA1005BNH20101



**The Mini One Buckle**  
 Colour: French Grey  
 Leather: Split  
 TMBNA1165BNH20101



**The Mini One Buckle**  
 Colour: Bay  
 Leather: Split  
 TMBNA1318BNH20101



**The Little One**  
 Colour: Oxblood  
 Leather: Split  
 TLONA1005MBN20101



**The Little One**  
 Colour: Black  
 Leather: Split  
 TLONA1001MBN20101



**The Little One**  
 Colour: Racing Green  
 Leather: Celtic Grain  
 TLONA1588MPG20101



**The Mini**  
 Colour: Oxblood  
 Leather: Split  
 MINNA1005MBN20101



**The Mini**  
 Colour: Black  
 Leather: Split  
 MINNA1001MBN20101



**The Mini**  
 Colour: Vintage  
 Leather: Split  
 MINNA1009MBN20101



**The Mini**  
 Colour: Clay / Oxblood / Navy  
 Leather: Split  
 MINNA3015MBN20101



**The Mini**  
 Colour: French Grey  
 Leather: Split  
 MINNA1165MBN20101



**The Mini**  
 Colour: Racing Green  
 Leather: Split  
 MINNA1226MBG20101



**The 11" Satchel**  
 Colour: Oxblood  
 Leather: Split  
 SAT111005MBN20101



**The 11" Satchel**  
 Colour: Black  
 Leather: Split  
 SAT111001MBN20101



**The 11" Satchel**  
 Colour: Vintage  
 Leather: Split  
 SAT111009MBN20101



**The 15" Batchel**  
 Colour: Navy  
 Leather: Split  
 BAT151004BNH10101



**The 15" Batchel**  
 Colour: Racing Green  
 Leather: Split  
 BAT151226PGH10101



**The 11" Batchel**  
 Colour: Oxblood  
 Leather: Split  
 BAT111005MBN20101



**The 11" Batchel**  
 Colour: Clay / Oxblood / Navy  
 Leather: Split  
 BAT113015MBN20101



**The 13" Satchel**  
 Colour: Black  
 Leather: Split  
 SAT131001MBN20101



**The Large Briefcase**  
 Colour: Oxblood  
 Leather: Saffiano  
 BRCLG1170MBB10101



**The Large Briefcase**  
 Colour: Black  
 Leather: Saffiano  
 BRCLG1168MBB10101



**The 13" Satchel**  
 Colour: Vintage  
 Leather: Split  
 SAT131009MBN20101



**The 13" Batchel**  
 Colour: Oxblood  
 Leather: Split  
 BAT131005MBN20101



**The 14" Satchel**  
 Colour: Oxblood  
 Leather: Split  
 SAT141005MBN20101



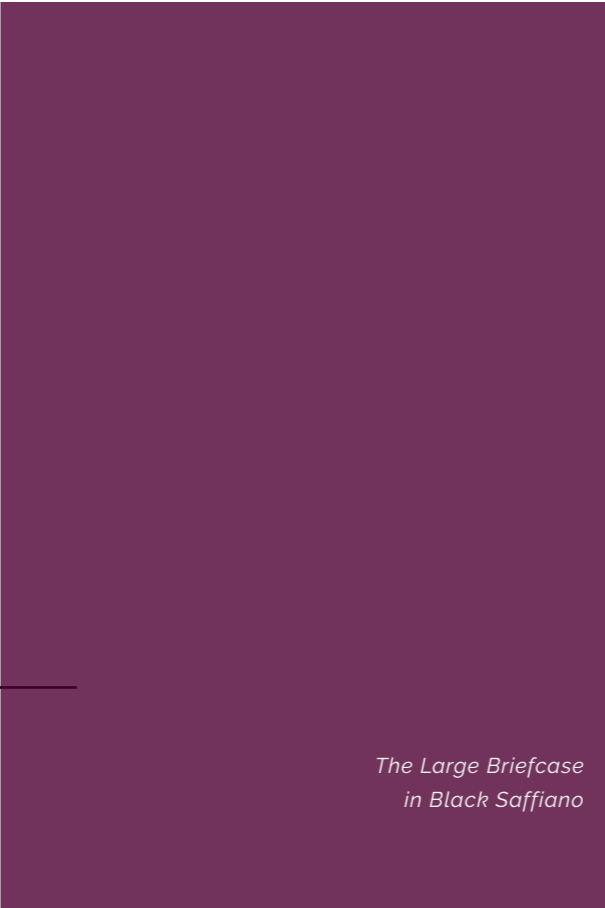
**The 15" Batchel**  
 Colour: Oxblood  
 Leather: Split  
 BAT151005BNH20101



**The 15" Batchel**  
 Colour: Black  
 Leather: Split  
 BAT151001BNH20101



**The 15" Batchel**  
 Colour: Vintage  
 Leather: Split  
 BAT151009BNH20101



*The Large Briefcase  
 in Black Saffiano*



**The Bowls Bag**  
 Colour: Oxblood  
 Leather: Celtic Grain  
 BOWNA1209MPG20101



**The Bowls Bag**  
 Colour: Black  
 Leather: Celtic Grain  
 BOWNA1419MPG20101



**The Bowls Bag**  
 Colour: Bay  
 Leather: Celtic Grain  
 BOWNA1386MPG20101



**The Bowls Bag**  
 Colour: Racing Green  
 Leather: Celtic Grain  
 BOWNA1588MPG20101



**The Mini Tote**  
 Colour: Black  
 Leather: Celtic Grain  
 MITNA1419PGH20101



**The Mini Tote**  
 Colour: Oxblood  
 Leather: Celtic Grain  
 MITNA1209PGH20101



**The Mini Tote**  
 Colour: Racing Green  
 Leather: Celtic Grain  
 TOTNA1588PGH20101



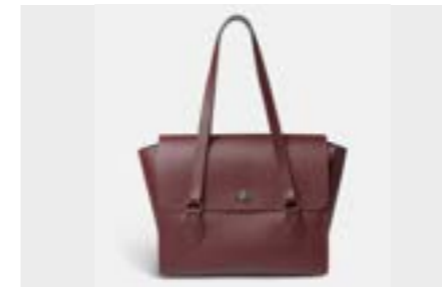
**The Tote**  
 Colour: Black  
 Leather: Celtic Grain  
 TOTNA1419PGH20101



**The Tote**  
 Colour: Oxblood  
 Leather: Celtic Grain  
 TOTNA1209PGH20101



**The Tote**  
 Colour: Racing Green  
 Leather: Celtic Grain  
 TOTNA1588PGH20101



**The Emily**  
 Colour: Oxblood  
 Leather: Saffiano  
 EMTLG1170PGH20101



**The Emily**  
 Colour: Bay  
 Leather: Celtic Grain  
 EMTLG1386PGH20101



**The Emily**  
 Colour: French Grey  
 Leather: Celtic Grain  
 EMTLG1176PGH20101



**The Mini Emily**  
 Colour: Oxblood  
 Leather: Saffiano  
 EMTMI1170PGH20101



**The Binocular Bag**  
 Colour: Oxblood  
 Leather: Celtic Grain  
 BINNA1209MBN20101



**The Binocular Bag**  
 Colour: Black  
 Leather: Celtic Grain  
 BINNA1419MBN20101



**The Pushlock**  
 Colour: Oxblood  
 Leather: Split  
 PLKMD1005BNH20101



**The Pushlock**  
 Colour: Black  
 Leather: Split  
 PLKMD1001BNH20101



**The Pushlock**  
 Colour: Vintage  
 Leather: Split  
 PLKMD1009BNH20101



**The Large Pushlock**  
 Colour: Oxblood  
 Leather: Split  
 PLKLG1005BNH20101



**The Large Pushlock**  
 Colour: Bay  
 Leather: Celtic Grain  
 PLKLG1386PGH20101



**The Large Pushlock**  
 Colour: Racing Green  
 Leather: Celtic Grain  
 PLKLG1588PGH20101



**The Poppy**  
 Colour: Oxblood  
 Leather: Split  
 POPNA1005BNH20101



**The Poppy**  
 Colour: Black  
 Leather: Split  
 POPNA1001BNH20101



**The Poppy**  
 Colour: Racing Green  
 Leather: Split  
 POPNA1226PGH20101



**The Poppy**  
 Colour: French Grey  
 Leather: Split  
 POPNA1165PGH20101



**The Mini Poppy**  
 Colour: Oxblood  
 Leather: Split  
 POPMI1005BNH20101



**The Small Traveller**  
 Colour: Oxblood  
 Leather: Split  
 TRPSM1005MBB20101



**The Small Traveller**  
 Colour: Clay / Oxblood / Navy  
 Leather: Split  
 TRPSM3015MBN20101



**The Small Traveller**  
 Colour: Racing Green  
 Leather: Celtic Green  
 TRPSM1588MPG20101



**The Daisy**  
 Colour: Navy  
 Leather: Split  
 DSYNA1004PGH20101



**The Daisy**  
 Colour: French Grey  
 Leather: Split  
 DSYNA1165PGH20101



**The Isla**  
 Colour: Oxblood  
 Leather: Split  
 ISLNA1005MBN20101



**The Isla**  
 Colour: Navy  
 Leather: Split  
 ISLNA1004MBN20101



**The Isla**  
 Colour: Racing Green  
 Leather: Celtic Green  
 ISLNA1226MPG20101



*The Isla  
 in Oxblood*







*The Music Bag  
in Navy & Tan*



**The Music Bag**  
Colour: Oxblood  
Leather: Split  
FOLNA1005BNH20101



**The Music Bag**  
Colour: Black  
Leather: Split  
FOLNA1001BNH20101



**The Music Bag**  
Colour: French Grey  
Leather: Split  
MUSNA1165BNH20101



**The Music Bag**  
Colour: Navy / Tan  
Leather: Split  
MUSNA2031BNH20101



**The Portrait Backpack**  
Colour: Oxblood  
Leather: Split  
PBPNA1005BNH20101



**The Portrait Backpack**  
Colour: Vintage  
Leather: Split  
PBPNA1009BNH20101



**The Portrait Backpack**  
Colour: Navy  
Leather: Split  
PBPNA1004BNH20101



**The Small Portrait Backpack**  
Colour: Oxblood  
Leather: Split  
PBPSM1005BNH20101



**The Small Portrait Backpack**  
Colour: Vintage  
Leather: Split  
PBPSM1009BNH20101



**The 14 Inch Batchel Backpack**  
Colour: Oxblood  
Leather: Split  
BPB141005BNH20101



*The Small Portrait Backpack  
in Vintage*



The Messenger Bag in Navy & Tan



The 15" Batch in Vintage



**The Messenger Backpack**

Colour: Navy / Tan  
Leather: Split with saddle trim  
BBPNA2031BBH21601



**The Messenger Bag**

Colour: Navy / Tan  
Leather: Split with saddle trim  
NBCNA2031BBH21601



**Canvas Steamer Backpack**

Colour: Oxblood  
Leather: Canvas with leather trim  
CSBNA1005BNH22701



**Canvas Steamer Backpack**

Colour: Black  
Leather: Canvas with leather trim  
CSBNA1001BNH22701

**SANDRA DUKE**

COMMUNICATIONS AND MARKETING DIRECTOR  
SANDRA.DUKE@CAMBRIDGESATCHEL.COM

**CAPREE SOBERS**

WHOLESALE EXECUTIVE  
CAPREE.SOBERS@CAMBRIDGESATCHEL.COM



**CAMBRIDGE SACHEL**

ENGLAND

