



AUTUMN WINTER 24



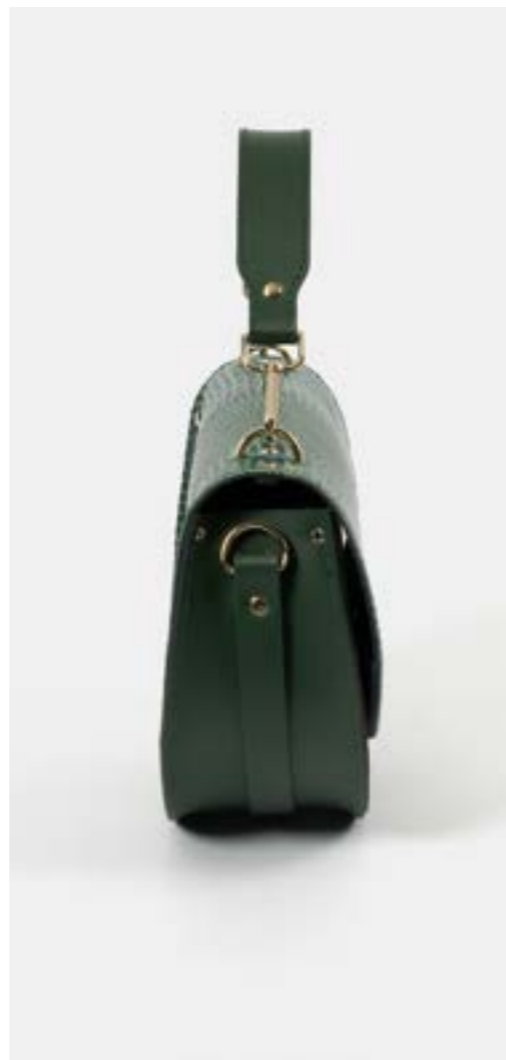
CAMBRIDGE SATCHEL

ENGLAND

AW24: ANIMAL

LIZARD GREEN EMBOSSED WITH GOLD
MAGENTA CROC WITH GOLD
TIGER WITH GOLD

LIZARD GREEN PRINT WITH GOLD



THE KATE

This sophisticated semi-circular bag is equipped with a detachable top handle and detachable crossbody strap for the ultimate versatility. Embellished with our monogram in glinting hardware, The Kate makes for a classy statement piece with ample space for essentials.



NEW: THE DRAWSTRING BAG

As a part of our luxury Cambridge Line, this premium calf leather bag combines the elegant with the casual, its softness creating a more relaxed look. Its drawstring closure allows for versatility as well as the ultimate spaciousness.

NEW: THE CLIP-ON POUCH

The clip-on version of our bestselling Mini Purse. This small envelope-shaped carrier for coins, cards and bits and bobs can now be clipped onto your bag for easy access! This product has been cleverly brought to life out of remaining pieces of leather from our bags. Handcrafted by our Makers, embossed with our logo, sealed with a Sam Browne stud and delivered to you.



MAGENTA CROC PRINT WITH GOLD

THE MICRO SACHEL

The miniscule version of our classic Satchel, equipped with a top handle. This bag boasts the same level of quality craftsmanship as our standard-size products, but in micro size. Compact and fuss-free, wear it casually with its detachable strap for an air of cool, or by hand to brighten up an evening outfit.



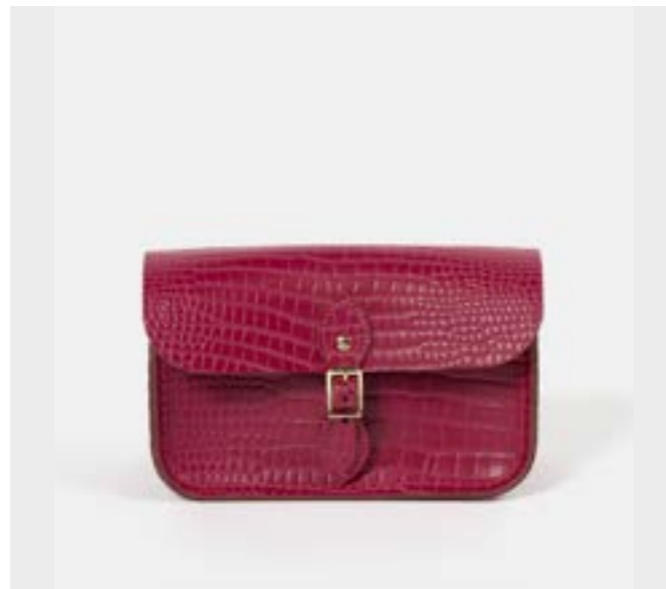
THE MINI TOTE

Those who have ever said that a Tote needs to be big have clearly never set eyes upon The Mini Tote. For the little bag lovers who like the ease of accessing their belongings, this bag can be grabbed in a hurry by its two top handles or can sit snugly by your side on a detachable, adjustable strap. Deceptively spacious, boxy and never bulky.



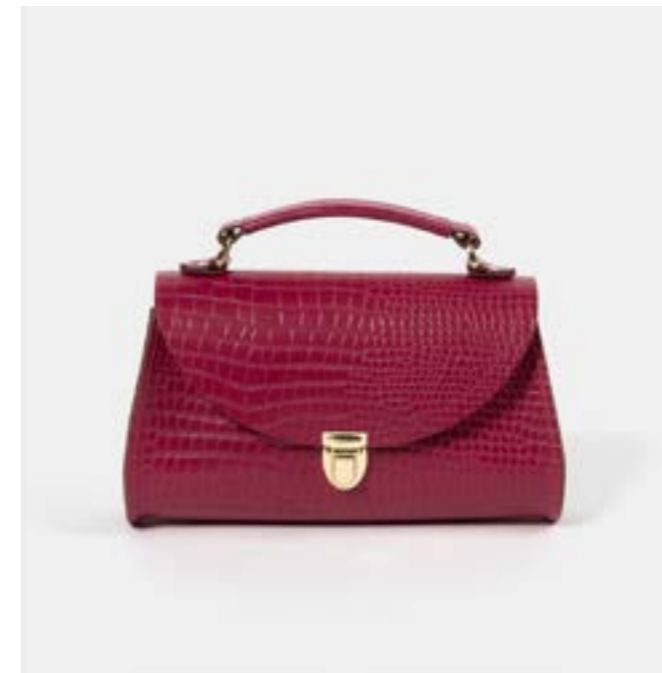
THE MINI ONE BUCKLE

The Mini One Buckle is a go-to staple for parties, daytrips, work events; from school days, to university days, to work life, Holding all lifes ultimate essentials.



THE BOWLS BAG

Originally intended as a carrier for two wooden bowls, this bag is ideal for modern day life. We have replaced the traditional buckles with magnetic closures whilst maintaining the exact same look. To prevent the bag rolling we have added small feet and a detachable shoulder strap gives versatility and functionality.



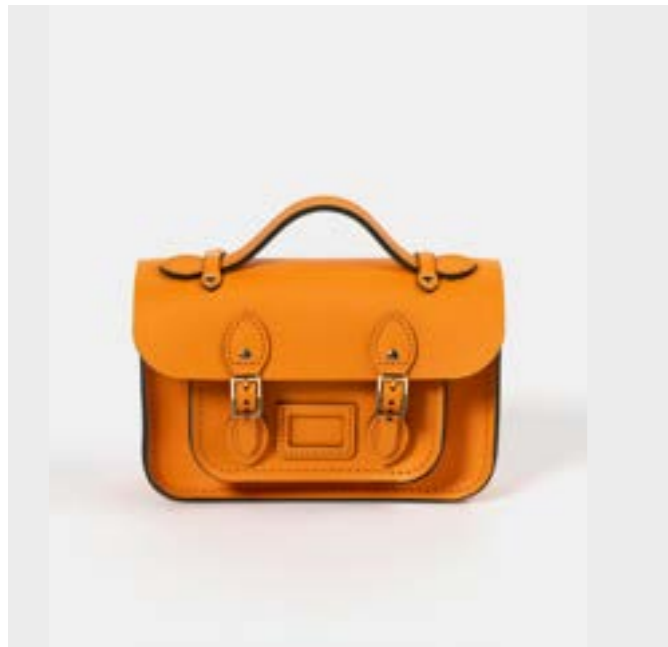
THE MINI POPPY

The perfect miniaturisation of our most popular bag, The Poppy, this mini version takes the chic shape and clever design of the original and distils it further into the perfect night-time bag. Perfectly balanced by your side, the Mini Poppy's pushlock closure opens swiftly to reveal an interior spacious enough to carry the essential elements of an unforgettable night - your favourite fragrance, your phone and that killer mascara.



NEW: THE CLIP-ON POUCH

The clip-on version of our bestselling Mini Purse. This small envelope-shaped carrier for coins, cards and bits and bobs can now be clipped onto your bag for easy access! This product has been cleverly brought to life out of remaining pieces of leather from our bags. Handcrafted by our Makers, embossed with our logo, sealed with a Sam Browne stud and delivered to you.

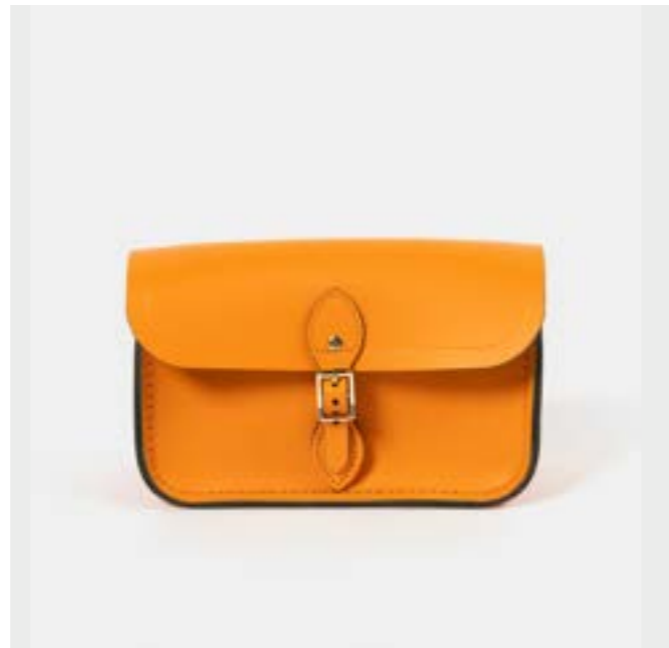


THE MINI SATCHEL

Made with the same care and precision as our standard sized Satchel, this smaller version features a handy top handle (actually qualifying it as a Batchel - but let's not get into that) as well as a slim, detachable and adjustable shoulder strap, making it the perfect day bag. Grab it when you're dashing out to meet friends in the park or hopping on the back of a bicycle made for two.

THE MINI ONE BUCKLE

The Mini One Buckle is a go-to staple for parties, daytrips, work events; from school days, to university days, to work life. Holding all lifes ultimate essentials.



THE 15" BATCHEL

The Batchel bears all the hallmarks of a Cambridge Satchel but adds some of the practical features of a briefcase; including a nifty top handle and adjustable shoulder strap.

The Batchel is one of our best-selling bags and for good reason. This style features a useful interior front pocket for those items you need to put your hands on quickly, such as your wallet, your keys, or your journal (when inspiration strikes!).



TIGER WITH GOLD

THE ISLA

Perfect for fun festivals and carefree days outdoors, this heritage bag will be with you for many summers to come. Inspired by the Scottish Sporrán (which is Gaelic for purse!), this eccentric little bag is just as practical and lightweight. Originally designed as an essential pocket to hold coins, food supplies and ammunition, our version retains its simplicity and holds everything you need for a day's summer adventure: keys, phone, cardholder and more.



THE MEDIUM TOTE

In a world where totes are (quite rightly) everywhere, we knew that creating the perfect version with our dose of Cambridge Satchel DNA was paramount. Structured, stylish, and strong enough to hold laptops, heavy books and water bottles, The Tote takes care of it for you, whether that's for business or pleasure.

NEW: THE CLIP-ON POUCH

The clip-on version of our bestselling Mini Purse. This small envelope-shaped carrier for coins, cards and bits and bobs can now be clipped onto your bag for easy access! This product has been cleverly brought to life out of remaining pieces of leather from our bags. Handcrafted by our Makers, embossed with our logo, sealed with a Sam Browne stud and delivered to you.



AW24: MAGIC

**CRACKED GOLD CALF WITH GOLD
SILVER GREY WITH NICKEL
PEACOCK PATENT WITH NICKEL**

CRACKED GOLD CALF WITH GOLD

CS RETAIL ONLY

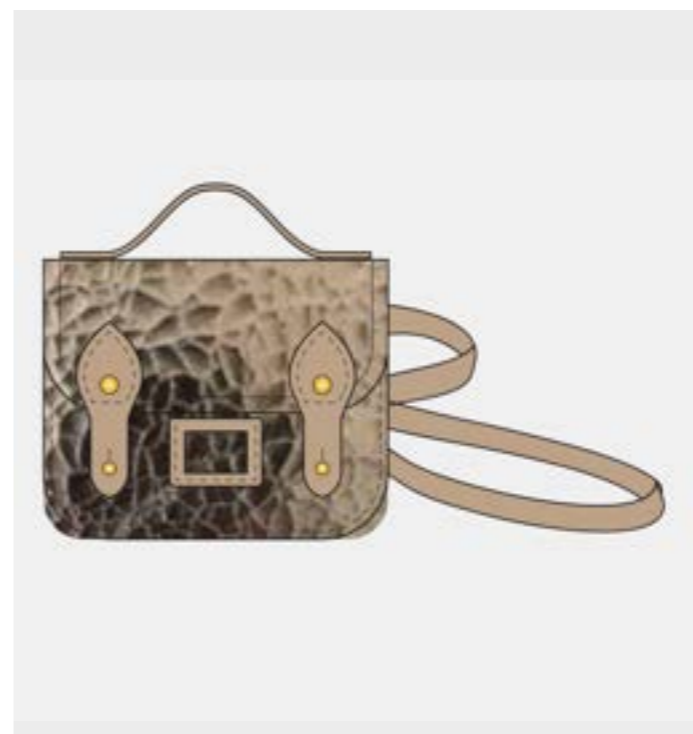
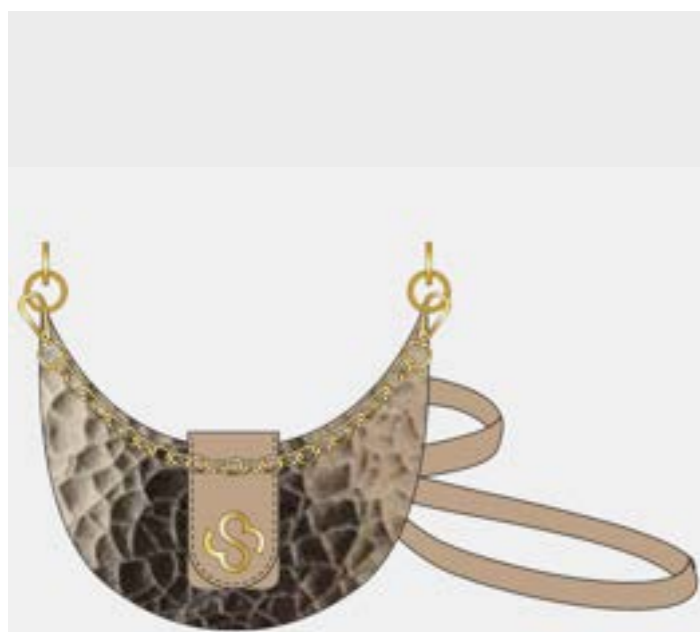
NEW: THE DRAWSTRING BAG

As a part of our luxury Cambridge Line, this premium calf leather bag combines the elegant with the casual, its softness creating a more relaxed look. Its drawstring closure allows for versatility as well as the ultimate spaciousness.



NEW: THE CRESCENT MOON BAG

The newest addition to our Cambridge Line. The Crescent Moon Bag is inspired by the night sky but can be worn all day long. Embellished with our monogram in glinting hardware, and equipped with both a detachable chain top handle and longer, detachable leather crossbody strap. The Crescent Moon Bag adds a touch of luxury in smooth calf grain leather.



THE MICRO SATCHEL

The miniscule version of our classic Satchel, equipped with a top handle. This bag boasts the same level of quality craftsmanship as our standard-size products, but in micro size. Compact and fuss-free, wear it casually with its detachable strap for an air of cool, or by hand to brighten up an evening outfit.



THE SHOULDER STRAP



THE MOON CHARM



THE STAR CHARM



NEW: THE CRESCENT MOON BAG

The newest addition to our Cambridge Line. The Crescent Moon Bag is inspired by the night sky but can be worn all day long. Embellished with our monogram in glinting hardware, and equipped with both a detachable chain top handle and longer, detachable leather crossbody strap, The Crescent Moon Bag adds a touch of luxury in smooth calf grain leather.

THE MEDIUM TOTE

In a world where totes are (quite rightly) everywhere, we knew that creating the perfect version with our dose of Cambridge Satchel DNA was paramount. Structured, stylish, and strong enough to hold laptops, heavy books and water bottles, The Tote takes care of it for you, whether that's for business or pleasure.



THE 15" BATCHEL

Spacious, unisex and practical, the 15 Inch Batchel has all of the features of our beloved Satchel but with the added convenience of a top handle, allowing it to be carried much like a briefcase. This large version is particularly popular as a work bag; it's the perfect size for many laptops, A4 documents and everyday essentials. Generously proportioned but engineered to be always neat and never cumbersome.



MOON GREY CELTIC GRAIN WITH GOLD

THE MINI SACHEL

Made with the same care and precision as our standard sized Satchel, this smaller version features a handy top handle (actually qualifying it as a Batchel - but let's not get into that) as well as a slim, detachable and adjustable shoulder strap, making it the perfect day bag. Grab it when you're dashing out to meet friends in the park or hopping on the back of a bicycle made for two.



THE KATE

This sophisticated semi-circular bag is equipped with a detachable top handle and detachable crossbody strap for the ultimate versatility. Embellished with our monogram in glinting hardware, The Kate makes for a classy statement piece with ample space for essentials.



NEW: THE CLIP-ON POUCH

The clip-on version of our bestselling Mini Purse. This small envelope-shaped carrier for coins, cards and bits and bobs can now be clipped onto your bag for easy access! This product has been cleverly brought to life out of remaining pieces of leather from our bags. Handcrafted by our Makers, embossed with our logo, sealed with a Sam Browne stud and delivered to you.

PEACOCK PATENT WITH NICKEL

THE MICRO SACHEL

The miniscule version of our classic Satchel, equipped with a top handle. This bag boasts the same level of quality craftsmanship as our standard-size products, but in micro size. Compact and fuss-free, wear it casually with its detachable strap for an air of cool, or by hand to brighten up an evening outfit.



THE BOWLS BAG

Originally intended as a carrier for two wooden bowls, this bag is ideal for modern day life. We have replaced the traditional buckles with magnetic closures whilst maintaining the exact same look. To prevent the bag rolling we have added small feet and a detachable shoulder strap gives versatility and functionality.



THE MINI TOTE

Those who have ever said that a Tote needs to be big have clearly never set eyes upon The Mini Tote. For the little bag lovers who like the ease of accessing their belongings, this bag can be grabbed in a hurry by its two top handles or can sit snugly by your side on a detachable, adjustable strap. Deceptively spacious, boxy and never bulky.



THE MINI POPPY

The perfect miniaturisation of our most popular bag, The Poppy, this mini version takes the chic shape and clever design of the original and distils it further into the perfect night-time bag. Perfectly balanced by your side, the Mini Poppy's pushlock closure opens swiftly to reveal an interior spacious enough to carry the essential elements of an unforgettable night - your favourite fragrance, your phone and that killer mascara.

THE MINI ONE BUCKLE

The Mini One Buckle is a go-to staple for parties, daytrips, work events; from school days, to university days, to work life. Holding all lifes ultimate essentials.



NEW: THE CLIP-ON POUCH

The clip-on version of our bestselling Mini Purse. This small envelope-shaped carrier for coins, cards and bits and bobs can now be clipped onto your bag for easy access! This product has been cleverly brought to life out of remaining pieces of leather from our bags. Handcrafted by our Makers, embossed with our logo, sealed with a Sam Browne stud and delivered to you.



CAMBRIDGE SATCHEL

ENGLAND

