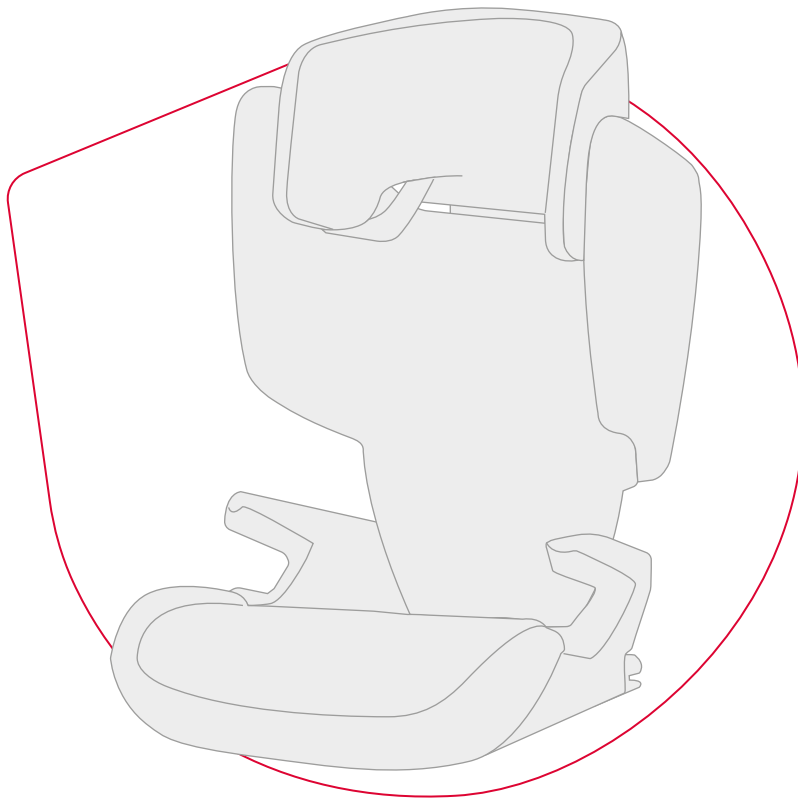


HI-LINER

<https://manuals.britax.com/product/P1040-1>



01

QR CODE



02

SCAN



03

READ



1. Safety

1.1. User Guide

This user guide is a component of the product and contributes to its safe use. Non-compliance may lead to serious or even fatal injuries. If in doubt, do **not** use product and immediately contact your retailer.

- ▶ Read user guide.
- ▶ If the product is given to third parties, include the user guide with the product.

1.2. Intended use

This product has been designed, tested and certified according to the requirements of the European Standard for Child Safety Equipment UN ECE R129/03. This product is designed exclusively for securing a child in a vehicle.

Height of child: 100 cm – 150 cm

In some vehicles, the headrest of the child seat cannot be fully extended due to lack of space. Use the child seat in these vehicles only for child sizes between 100 cm and 135 cm.

This approval is invalidated if you make any modifications to this product. Changes may only be made by the manufacturer. The stickers on the product are an important component of the product.

- ▶ Do not make any changes.
- ▶ Do not remove stickers.

1.3. Safety information

Risk of injury from damaged child seat

In the event of an accident at a collision speed of more than 10 km/h, the child seat may be damaged without the damage being immediately visible. Serious injuries may result from another accident.

- ▶ Replace product following an accident.
- ▶ Have damaged product inspected (even if it has fallen onto the ground).
- ▶ Regularly check all important parts for damage.
- ▶ Ensure that all mechanical components work properly.
- ▶ Never lubricate or oil parts of the product.
- ▶ Properly dispose of the damaged product.

Risk of burns from hot components

Components of the product can become hot in direct sunlight. Children's skin is sensitive and maybe harmed as a result.

- ▶ Protect the product against intensive direct sunlight when not in use.

Risk of crushing from moving backrest

When straightening the backrest, fingers may be crushed between the backrest and seat cushions.

- ▶ Keep fingers out.

Risk of injury if installed incorrectly

If the product is installed or used other than as described in the user guide, serious or even fatal injuries may result.

- ▶ **Never** secure the child seat with a 2-point seat belt.
- ▶ Only use on a car seat facing or against the direction of travel.
- ▶ Note and follow the instructions in the vehicle handbook.

Risk of injury from front airbag

Airbags are designed to protect adults. If the child seat is too close to the front airbag, slight or serious injuries can arise.

- ▶ If the child seat is secured on the passenger seat, slide the passenger seat backwards.
- ▶ If the child seat is secured on the second or third row of seats, slide the corresponding front seat forwards.
- ▶ Note and follow the instructions in the vehicle handbook.

Risk of injury due to missing contact surface

It is necessary for the backrest of the child seat to be flat to the car seat. If the headrest of the car seat prevents this, then carry out the following steps.

- ▶ Check whether the vehicle handbook allows the headrest to be removed.
- ▶ If this is **allowed**, then remove the headrest according to the vehicle handbook. Immediately reattach the headrest as soon as the child seat is no longer used on the car seat.
- ▶ If this is **prohibited**, select a different car seat.

Risk of injury due to over-long belt lock

The position of the belt lock affects the protective function of the child seat.

- ▶ Select a different car seat if the seat belt lock is in or in front of the dark-green belt guide.
- ▶ If in doubt, contact your retailer.

Risk of injury during use

The temperature in a vehicle can rise dangerously quickly. In addition, it is dangerous to leave the vehicle on the side facing the street.

- ▶ Never leave a child unsupervised in the vehicle.
- ▶ Only allow the child to board and disembark on the footpath-side.
- ▶ On long journeys, take regular breaks in order to give your child chance to move and play.

Risk of injury from unsecured objects

In the case of an emergency stop or accident, unsecured objects or people may cause injury to other occupants in the vehicle.

- ▶ **Never** secure your child by holding them tightly on your lap.
- ▶ Secure backrests of the vehicle find (e.g. engage foldable rear).
- ▶ Secure all heavy or sharp-edged objects in the vehicle (e.g. on the parcel shelf).
- ▶ Do not place objects in the foot well.
- ▶ Ensure that everyone in the vehicle has their seatbelts fastened.
- ▶ Ensure that the product is always secured when it is in the vehicle, even if no child is being transported.

Risk of injury from unsecured child

If the child causes the car seat belt lock to open, in the event of an emergency stop or an accident there is a risk of serious or even fatal injuries.

- ▶ Stop safely as soon as this is possible.
- ▶ Ensure that the child seat is correctly fastened.
- ▶ Ensure that your child is buckled up correctly.
- ▶ Explain the consequences and dangers to the child.

Avoid damaging the product

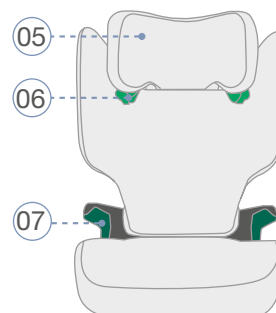
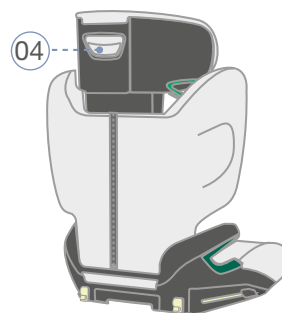
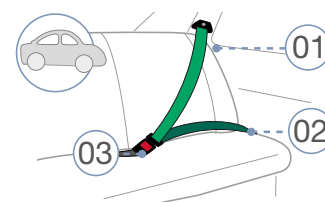
- ▶ Never use product in a free-standing position, even for testing.
- ▶ Product is not a toy.
- ▶ Ensure that the child seat is not trapped between hard objects (car door, seat rails, etc.).
- ▶ Store child seat in a safe place when not in use.
- ▶ Keep product away from: moisture, wet conditions, liquids, dust and salt spray.
- ▶ Do not lean heavy objects on the child seat.
- ▶ Do not store child seat directly next to sources of heat or in direct sunlight.

How to avoid damaging the vehicle

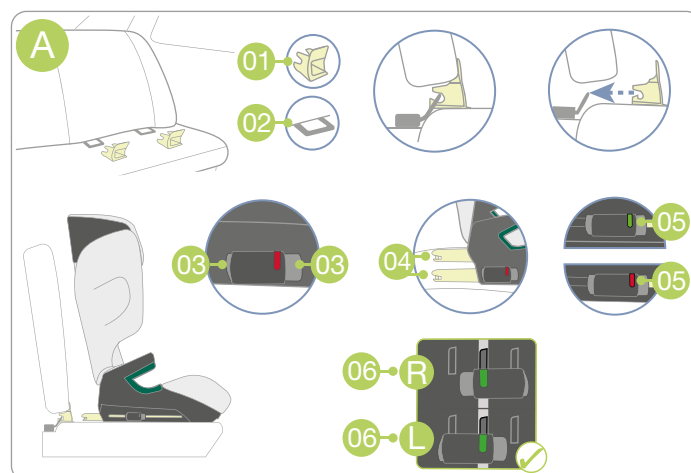
- ▶ The vehicle's sensitive seat covers may be damaged.
- ▶ Use BRITAX RÖMER vehicle seat protectors. These are available separately.

2. Product overview

- 01 Diagonal belt
- 02 Lap belt
- 03 Seat belt lock
- 04 Adjustment button
- 05 Headrest
- 06 Light-green belt holder
- 07 Dark-green belt guide



- A ISOFIX
- 01 Insertion aid
- 02 ISOFIX installation bracket
- 03 ISOFIX buttons
- 04 ISOFIX locking arms
- 05 ISOFIX indicator
- 06 ISOFIX position R L



3. Contact

If there are any questions, please get in touch.

BRITAX RÖMER Child Safety EMEA
www.britax-roemer.com
contact@britax-roemer.com

BRITAX RÖMER Kindersicherheit GmbH
Theodor-Heuss-Strasse 9
89340 Leipheim
Germany

4. Use in the vehicle

4.1. Select seat and installation method

Select a suitable seat.

- Car seats with i-Size approval are suitable. Secure the child seat with ISOFIX and 3-point seat belt, see page 3.
- Suitable car seats with ISOFIX installation bracket, which have been tested and approved by Britax Römer. These can be found in the FIT FINDER® at www.britax-roemer.com or directly via the QR code. Secure the child seat with ISOFIX and 3-point seat belt, see page 3.



HI-LINER

- Car seats with a 3-point seat belt, which are approved according to ECE R16 or comparable standard, are suitable. Secure the child seat with three-point seat belt, see page 4.

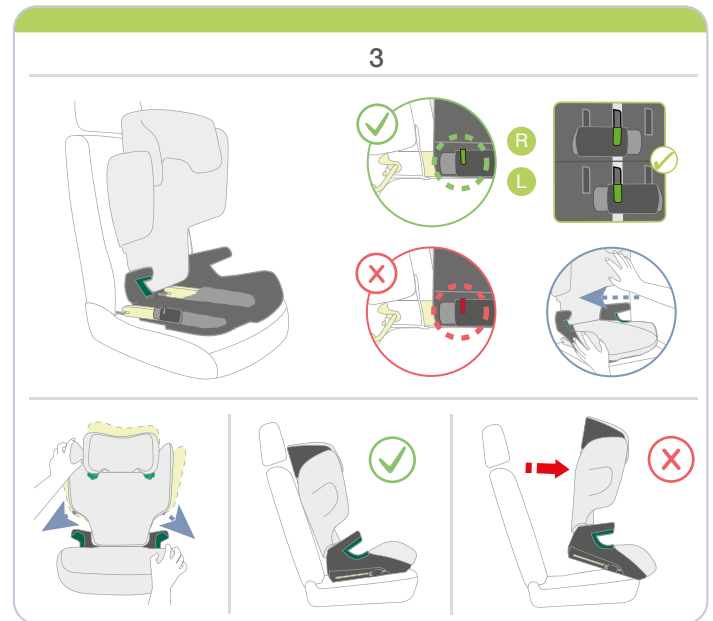
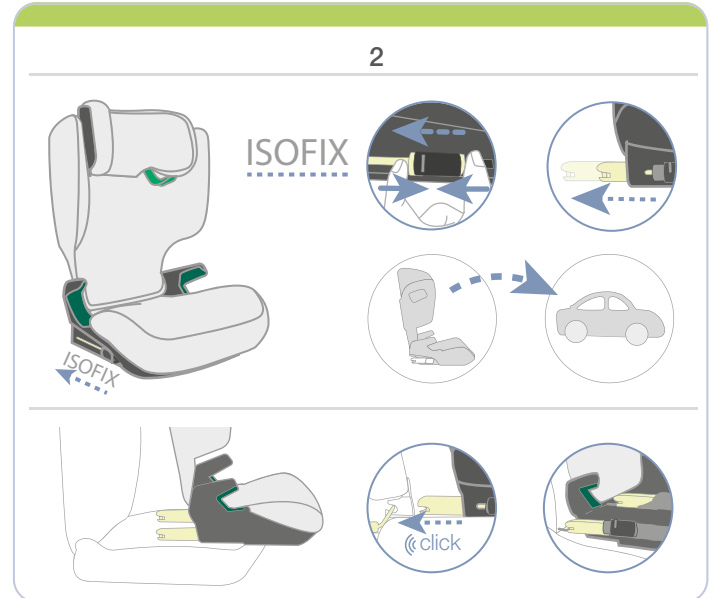
4.2. Secure the child seat with a three-point seat belt

4.2.1. Attach insertion aids

The applicators simplify connecting the ISOFIX locking arms of the child seat to the ISOFIX installation bracket on the car seat. Some vehicles already have integrated applicators. Check whether your vehicle already has the required applicators. If the vehicle does not have them, Britax Römer recommends using the applicators. These are included in the scope of delivery of the child seat.



4.2.2. Fastening the ISOFIX



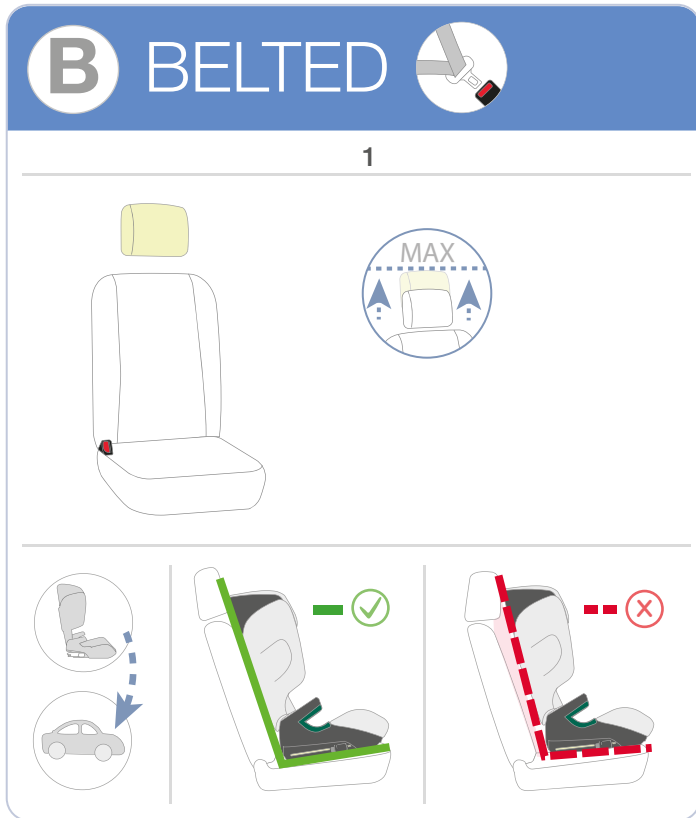
↳ The child seat is secured in the vehicle.

4.2.3. Buckle child in

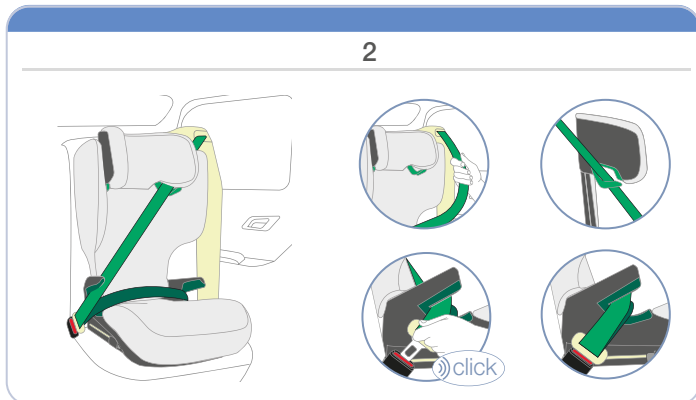
► Buckle your child in, see “5. Buckle child in” on page 5.

4.3. Secure the child seat with a three-point seat belt

4.3.1. Position child seat



4.3.2. Secure the three-point seat belt



⚠ CAUTION! Secure the unoccupied child seat before each journey.

4.3.3. Buckle child in

↳ The child seat is secured in the vehicle.

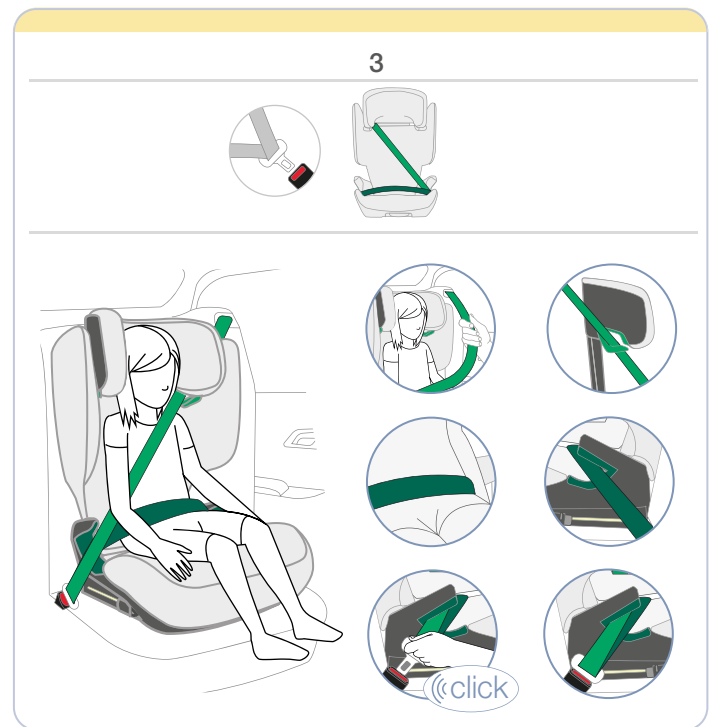
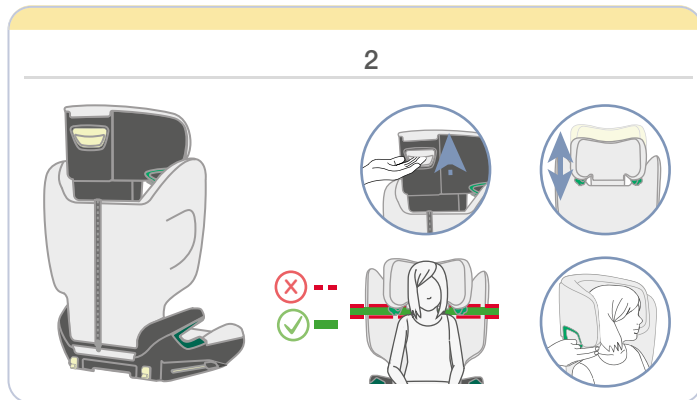
▶ Buckle your child in, see “5. Buckle child in” on page 5.

5. Buckle child in

Risk of injury from slack straps

Slack straps are areas of the seat belt that lie loosely against the child's body. Slack straps have a negative impact on the protective function.

- ▶ Check straps are tight and **not** twisted.
- ▶ Avoid thick clothing under the belt.



⚠ CAUTION! Secure the unoccupied child seat before each journey.

6. Check before every use

- The lap belt is in the left and right, dark-green belt guide.
- The lap belt runs on both sides as deep as possible over the child's hips.
- The diagonal belt is to the side of the seat belt lock in the dark-green belt guide.
- The diagonal belt is in the light-green diagonal belt guide.
- The diagonal belt leads diagonally to the back from the child seat.
- The vehicle seat lock is **neither** in front of the dark-green belt guide.
- The seat belt is pulled tight and **not** twisted.
- The child is correctly strapped in.

When using ISOFIX, please also note:

- Connect both ISOFIX locking arms to the ISOFIX installation brackets.
- Both ISOFIX indicators are exclusively green.

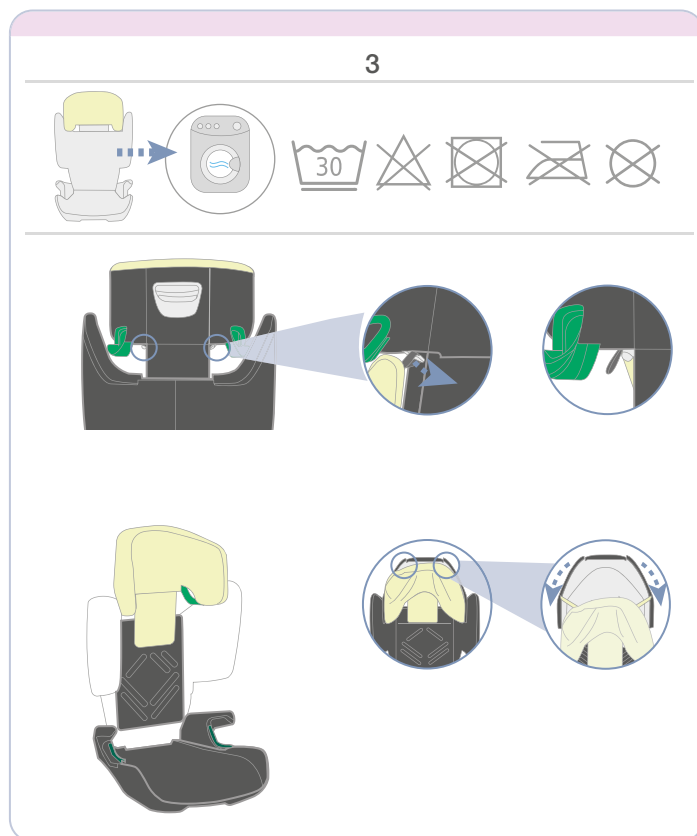
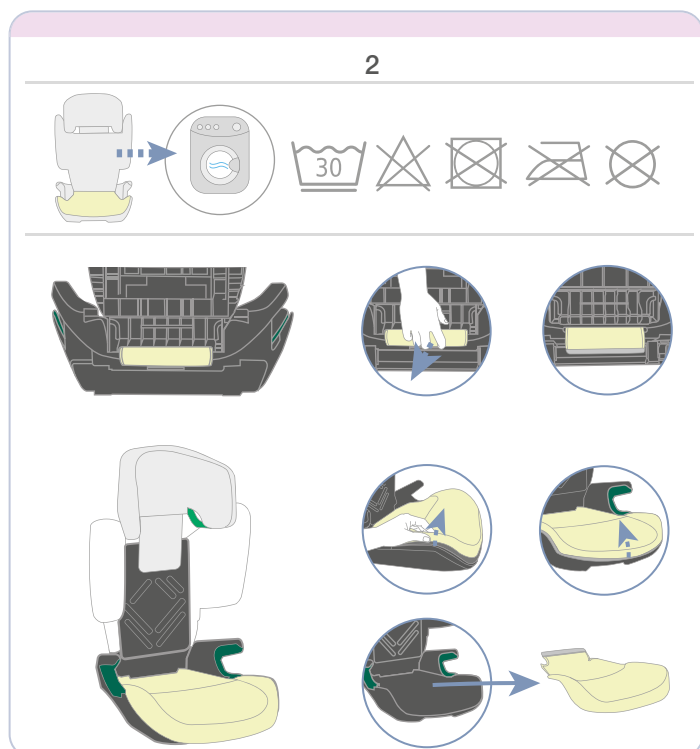
7. Cleaning and care

⚠ WARNING! Never use child seat without seat cover.

The seat cover is an integral safety component of the child seat. If the seat cover is not used, this may lead to serious or even fatal injuries.

- ▶ Only use original BRITAX RÖMER replacement seat covers.
- ▶ Replacement seat covers are available from your retailer.

7.1. Clean cover



7.2. Clean plastic parts

- ▶ Clean plastic parts with soapy water.
- ▶ Do not use abrasive cleaning agents (e.g. solvents).

8. Disposal

- ▶ Observe the disposal regulations in your country.
- ▶ Do not dismantle product.