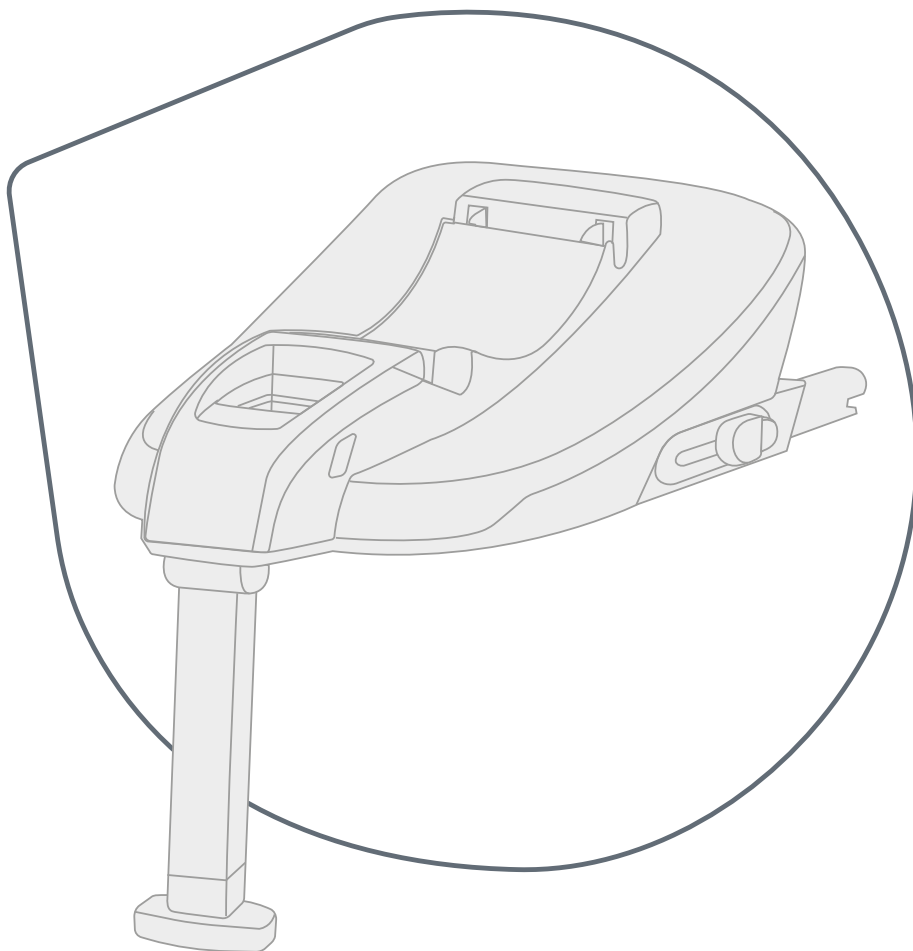




BABY-SAFE CORE BASE

USER GUIDE



EN

BRITAX RÖMER Child Safety EMEA

www.britax-roemer.com | contact@britax.com

Contents

| | | |
|----------|--|-----------|
| 1 | Symbol explanation..... | 3 |
| 2 | Safety..... | 4 |
| 2.1 | User Guide..... | 4 |
| 2.2 | Intended use..... | 4 |
| 2.3 | Misuse..... | 4 |
| 2.4 | Safety information..... | 4 |
| 3 | Use in the vehicle..... | 5 |
| 3.1 | Secure base station..... | 5 |
| 3.2 | Secure seat module to base station..... | 7 |
| 3.3 | Check before every use..... | 7 |
| 3.4 | Release seat module from base station..... | 7 |
| 3.5 | Loosen base station..... | 8 |
| 4 | Cleaning and maintenance..... | 9 |
| 4.1 | Clean plastic parts..... | 9 |
| 4.2 | Troubleshooting..... | 9 |
| 5 | Storage and disposal..... | 10 |
| 5.1 | Storage..... | 10 |
| 5.2 | Disposal..... | 10 |
| 6 | Contact..... | 11 |

1 Symbol explanation

Warning signs

Warning signs are used in this user guide in order to advise of potential danger situations. The warning signs inform you about the following items:

- Level of danger,
- Type and source of danger,
- Consequences if disregarded,
- Measures to prevent danger.

Warning signs are shown as follows:

WARNING

Type and source of danger

Consequences if disregarded

- ▶ Measures to prevent danger

| Level of danger | Meaning |
|-----------------|---|
| DANGER! | Highlights dangerous situations which, if not avoided, lead to serious injuries or death. |
| WARNING! | Indicates a dangerous situation which, if not avoided, can lead to serious injuries or death. |
| CAUTION! | Indicates a dangerous situation which, if not avoided, can lead to slight to moderate injuries. |
| NOTE | Indicates actions that can lead to damage. |

Signs and symbols

-  Highlights important information for you.

Specific actions

- ▶ ...

Action

1. Demands action from you.
2. Defined sequence of actions.
3. ...

Result of action

- ✓ There is where you will find the result of a sequence of actions.

2 Safety

2.1 User Guide

This user guide is a component of the product and contributes to its safe use. Non-compliance may lead to serious or even fatal injuries. If there are uncertainties, do not use the product and immediately contact your retailer.

- ▶ Read the User Guide.

2.2 Intended use

This product has been designed, tested and approved corresponding to the requirements of UN R129/03.

This product is a base station. It is designed for securing one of the following seat modules in the vehicle. Other products must not be used with this base station.

This product is approved in combination with:

- ▶ BABY-SAFE CORE

This approval is invalidated if you make any modifications to this product. Changes may only be made by the manufacturer. The stickers on the product are an important component of the product.

- ▶ Do not make any changes to the product.
- ▶ Do not remove any stickers from the product.

2.3 Misuse

- ▶ Do not use the product as a toy.
- ▶ Do not use the product as a chair outside the vehicle, not even to test.
- ▶ Only secure the child seat with fastening points described in this User Guide.
- ▶ Do not fasten the product either with a 2-point seat belt or a 3-point seat belt.
- ▶ Ensure that the product is not trapped between hard objects (car door, seat rails, etc.).
- ▶ Keep product away from moisture, wet conditions, liquids, dust and salt spray.
- ▶ Do not lean heavy objects on the product.
- ▶ Never lubricate or oil parts of the product.
- ▶ Sensitive car seat covers may be damaged. Use the Britax Römer child seat base. These are available separately.

2.4 Safety information

Risk of injury from damaged child seat

In the event of an accident at a collision speed of more than 10 km/h, the child seat may be damaged without the damage being immediately visible. Serious injuries may result from another accident.

- ▶ Replace the product after an accident.
- ▶ Have a damaged product inspected (even if it has fallen onto the ground).
- ▶ Regularly check all the important parts for damage.
- ▶ Ensure that all mechanical components work properly.

Risk of burns from hot components

Components of the product may become hot in direct sunlight. Children's skin is sensitive and maybe harmed as a result.

- ▶ Protect the product against intensive direct sunlight when not in use.

Risk of injury during use

The temperature in a vehicle can rise dangerously quickly. In addition, it is dangerous to leave the vehicle on the side facing the street.

- ▶ Never leave the child unsupervised in the vehicle.
- ▶ Only secure and remove the child seat from the foot-path-side.

Risk of injury from unsecured objects

In the case of an emergency stop or accident, unsecured objects or people may cause injury to other occupants in the vehicle.

- ▶ Only fasten the product as described in these operating instructions.
- ▶ Secure backrests of the vehicle find (e.g. engage foldable rear).
- ▶ Fasten or remove all heavy or sharp-edged objects in the vehicle (e.g. on the parcel shelf).
- ▶ Ensure that everyone in the vehicle has their seatbelts fastened.
- ▶ Ensure that the product is always secured when it is in the vehicle, even if no child is being transported.

3 Use in the vehicle

3.1 Secure base station

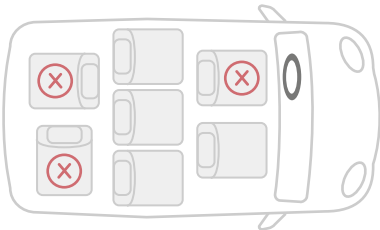
3.1.1 Select seat

1. Select a suitable seat.

- Car seats with i-Size approval are suitable.

i In rare cases, the child seat on car seats with i-Size approval can only be adjusted within limits.

- Suitable car seats with ISOFIX installation bracket, which have been tested and approved by us. You can find these in our model list at www.britax-roemer.com.
- Only car seats arranged in the direction of travel are approved for use.



2. Note and observe the vehicle handbook.

i Britax Römer recommends positioning the car seats as follows.

When using on the front seat:

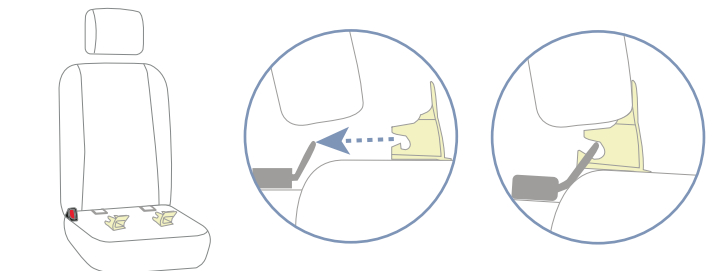
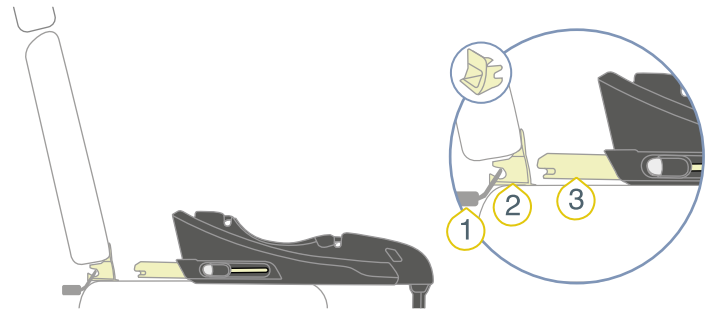
- ▶ Slide the front seat as far back as possible.

When using on the rear seat:

- ▶ Slide the back seat as far back as possible.
- ▶ Slide the front seat as far forwards as possible.

3.1.2 Attach insertion aids

i The applicators simplify connecting the ISOFIX locking arms of the base station to the ISOFIX installation bracket on the car seat. Some vehicles already have integrated applicators. Check whether your vehicle already has the required applicators. If the vehicle does not have them, Britax Römer recommends using the applicators. These are included in the scope of delivery of the base station.

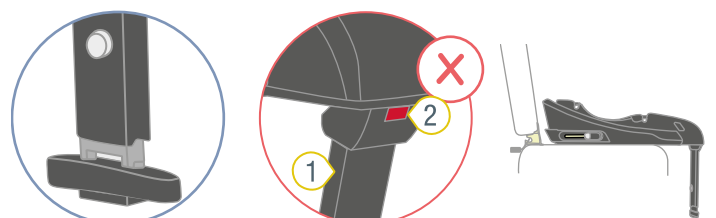
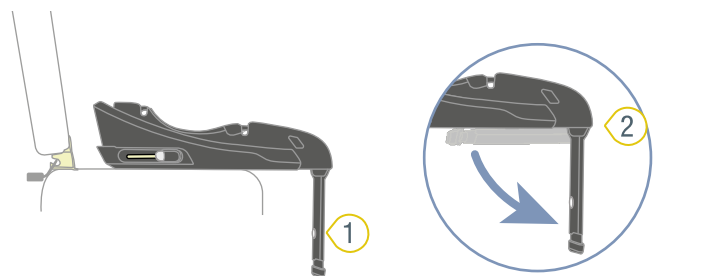


- 1** ISOFIX installation
- 2** Insertion aid
- 3** ISOFIX locking arms bracket

▶ Clamp the two insertion aids **2**, with the cut-out facing up, to the ISOFIX installation bracket **1** of the car seat.

i For car seats with foldable backrests, the insertion aids **2** must be removed before folding the backrest.

3.1.3 Position child seat



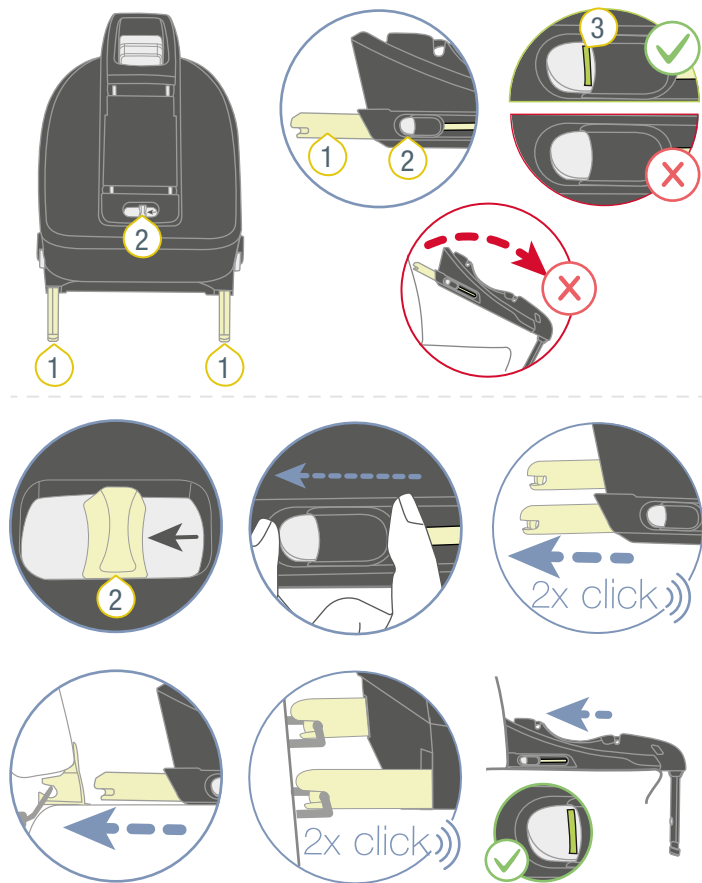
- 1** Support leg
- 2** Rotation indicator

1. Fold the support leg **1** completely away from the base station.

✓ The red swivel indicator **2** is no longer visible.

2. Place the base station on the selected car seat.

3.1.4 Fastening the ISOFIX



- ① ISOFIX locking arms
- ② Slider
- ③ ISOFIX indicator

1. Slide the slider 2 to the side and hold it in place.

INFO If slider cannot be moved, please see the information in chapter "Troubleshooting", page 9.

2. Slide out the ISOFIX locking arm 1 as far as possible.

3. Release the slider 2.

✓ The slider 2 audibly locks in place.

4. Connect the ISOFIX locking arms 1 to the ISOFIX installation bracket on the car seat.

✓ Both ISOFIX locking arms 1 audibly lock in place.

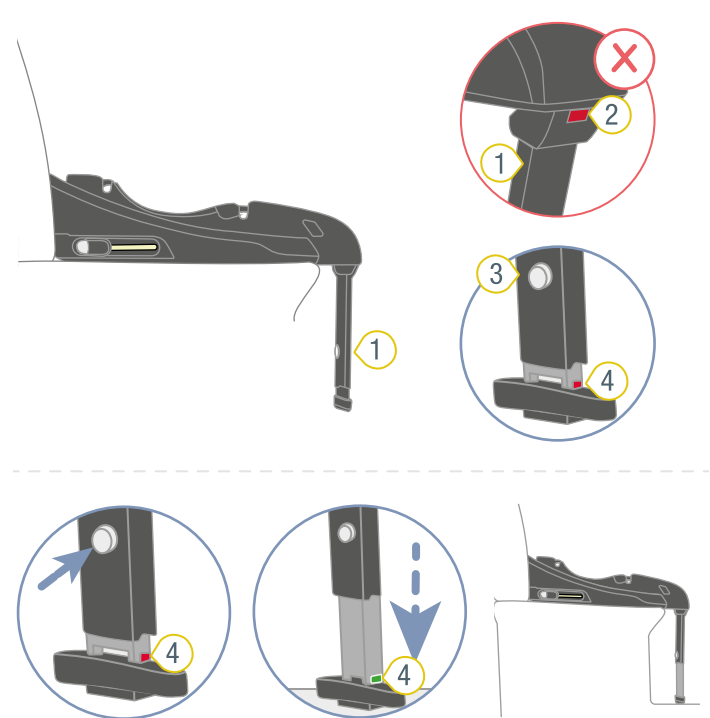
✓ Both ISOFIX indicators 3 are green.

⚠ WARNING Risk of injury from unsecured child seat. Make sure that both ISOFIX locking arms are fully locked in place. Both ISOFIX indicators must be green.

5. Check that the ISOFIX locking arms 1 are connected to the ISOFIX installation brackets on both sides by pulling at the product.

✓ If neither of the ISOFIX locking arms 1 comes loose, they are both connected to the vehicle.

3.1.5 Setting support leg



- ① Support leg
- ② Rotation indicator
- ③ Adjustment button
- ④ Support indicator

1. Make sure that the support leg 1 is still folded out.

✓ The red rotation indicator 2 is no longer visible.

2. Keep holding the adjustment button 3 depressed.

3. Extend the support leg 1 to the floor of the vehicle.

4. Release the adjustment button 3.

✓ The adjustment button 3 audibly locks in place.

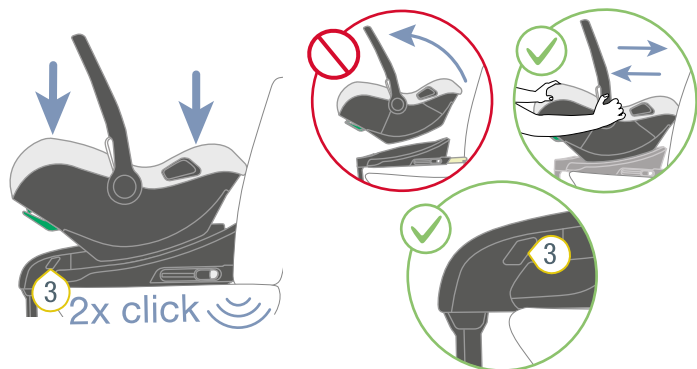
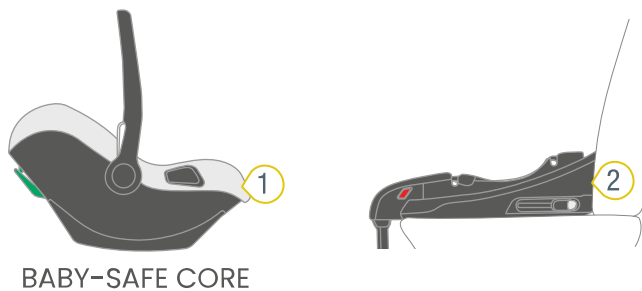
✓ The protection indicator 4 is green.

✓ The bottom of the base station is on the seat of the car seat.

⚠ WARNING Risk of injury if the support leg is not stable. **Never** place objects underneath the support leg. Make sure that the support leg is standing stably on the floor of the vehicle.

5. Make sure that the support leg 1 **does not** raise the bottom of the base station from the surface of the car seat.

3.2 Secure seat module to base station



- ① Seat module
- ② Base station
- ③ Safety indicator

1. Make sure that there are no foreign objects on the base station.
2. When securing an infant carrier, place the handle in the upper position.
3. Lock the seat module 1 onto the base station 2.
 - ✓ The seat module audibly locks.
 - ✓ The red safety indicator 3 is no longer visible.

⚠ WARNING Risk of injury from unsecured seat module. Make sure that the seat module is locked onto the base station. Try to lift the seat module. If the seat module cannot be lifted from the base station, the seat module is securely locked in place.

3.3 Check before every use

To protect your child, check the following points before each car journey.

Base station

1. Both ISOFIX locking arms are locked into the ISOFIX installation brackets.
2. Both ISOFIX indicators are green.
3. The support leg is stable on the floor of the car.
4. The red rotation indicator of the support leg is no longer visible.
5. The protection indicator on the support leg is green.
6. The red rotation indicator on the rotary button is not visible.

Seat module

1. The seat module is fully locked in place.
2. The child is correctly strapped in.
3. The straps are tight to the child's body without restricting the child.
4. The headrest is correctly adjusted.
5. The shoulder pads are in the right position on the child.
6. The straps are **not** twisted and **not** reversed.
7. The seat module is used as intended in respect of the age and size of the child (see "Intended use", page 4).

Vehicle

- ▶ The front airbag is disabled if using the seat module facing backwards.

⚠ WARNING

Risk of injury due to omitted checks.

During the journey, the child may try to unbuckle the belt or loosen the child seat. If the child is not secured in the child seat, this can lead to serious or even fatal injuries.

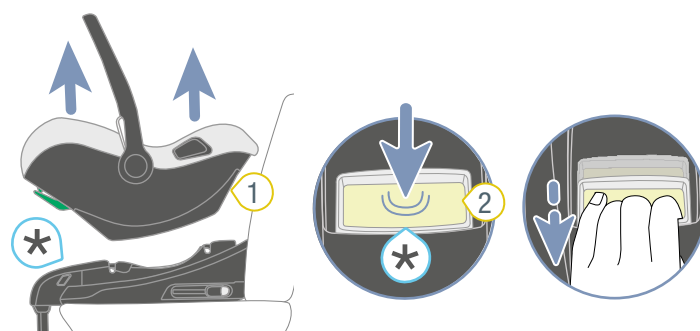
If the child or the child seat is not fastened:

- ▶ Immediately stop the vehicle as soon as the traffic situation allows.
- ▶ Make sure that the child seat is secured.
- ▶ Ensure that the child is buckled in.

- ① For the wellbeing of your child, on long journeys Britax Römer recommends taking regular breaks. Give your child the opportunity to move.

3.4 Release seat module from base station

BABY-SAFE CORE BASE



- ① Seat module
- ② Release button

1. Push and pull the release button 2.
2. Hold the seat module 1 tight and raise it.

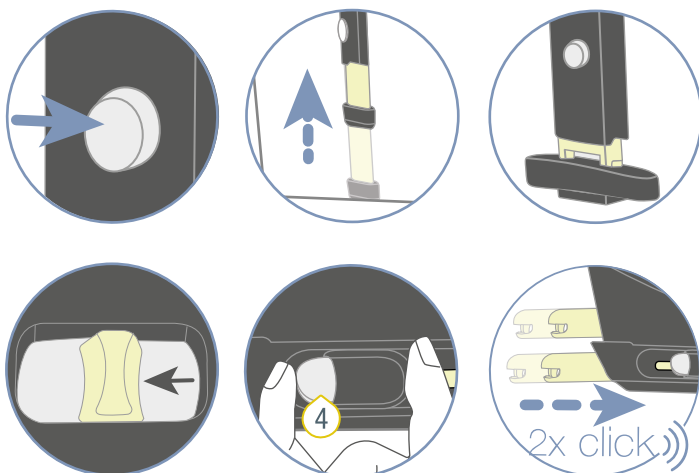
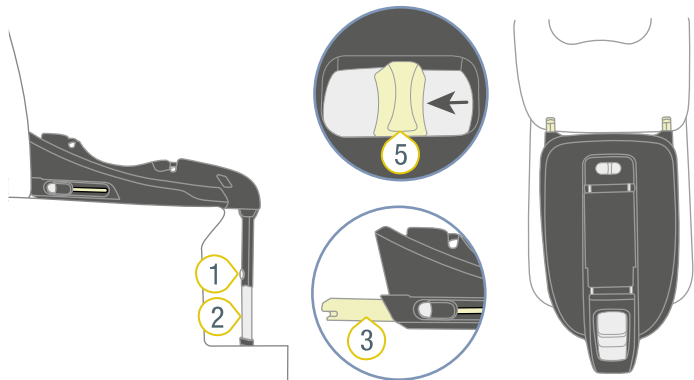
3.5 Loosen base station

⚠ WARNING

Risk of injury from unsecured objects

In case of an emergency stop or accident, the unsecured base station may cause injury to other occupants in the vehicle.

- ▶ Secure the base station, including the seat module, in the vehicle, even if no child is being transported.



- ① Adjustment button
- ② Support leg
- ③ ISOFIX locking arms
- ④ Release button
- ⑤ Slider

1. Remove the seat module from the base station.
2. Keep holding the adjustment button 1 depressed.
3. Slide the lower section of the support leg 2 into the upper section.
4. Release the adjustment button 1.
✓ The support leg 2 is fully retracted.
5. Push the base station into the car seat.
6. Slide the slider 5 to the side and hold it in place.
7. Pull the base station away from the car seat.
8. Release the slider 5.
9. Press the release button 4 on the ISOFIX locking arms 3 and pull the ISOFIX locking arms 3 away from the ISOFIX installation bracket.

10. Slide the ISOFIX locking arms 3 back into the base station.

- ✓ Both ISOFIX locking arms 3 are protected against damage.

4 Cleaning and maintenance

4.1 Clean plastic parts

- ▶ Regularly clean the plastic parts with soapy water.

4.2 Troubleshooting

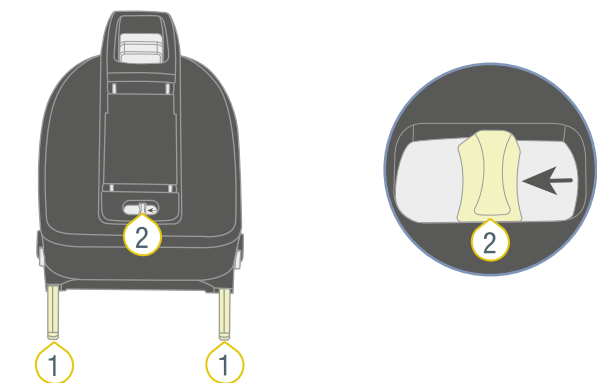
4.2.1 Slider does not move ISOFIX not moveable

Problem description

The securing hooks secure the seat module to the base station. If the securing hooks are closed,

- ▶ the slider **2** cannot be used.
- ▶ the ISOFIX locking arms **1** cannot be moved

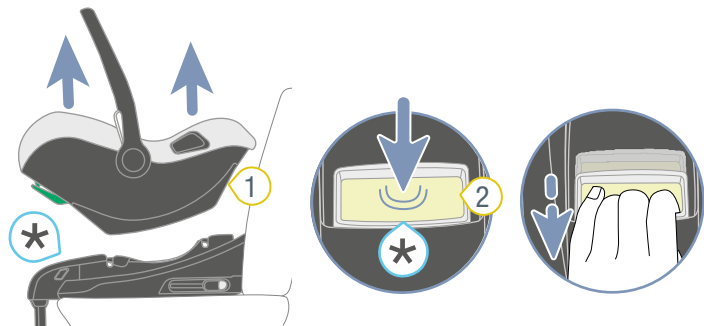
i The securing hooks can be closed if there is no seat module on the base station. In order to solve this problem, carry out the first step of the following solution.



1 ISOFIX locking arms **2** Slider

Solution

BABY-SAFE CORE BASE



1 Seat module **2** Release button

1. Press and pull the release button **2**.
2. Hold the seat module **1** tight and raise it.

4.2.2 ISOFIX does not connect

Problem description

If the ISOFIX locking arms cannot be connected to the ISOFIX installation brackets, this may be due to dirty ISOFIX installation brackets in the vehicle.

Solution

- ▶ Clean the vehicle's ISOFIX installation brackets.

5 Storage and disposal

5.1 Storage

If you do not use the product for a longer period, please note the following information.

- ▶ Store product in a secure and dry location.
- ▶ Keep the storage temperature between 20 and 25 °C.
- ▶ Do not lean heavy objects on the product.
- ▶ Do not store product directly next to sources of heat or in direct sunlight.
- ▶ Protect the product from moisture, wet conditions, liquids, dust and salt spray.

5.2 Disposal

- ▶ Do not dismantle the product.
- ▶ Prevent third parties from using the defective product.
 - ① Remove the approved label.
- ▶ Please follow the disposal regulations applying in your country.

6 Contact

If there are any questions, please get in touch:

BRITAX RÖMER Child Safety EMEA

www.britax-roemer.com

contact@britax.com

BRITAX RÖMER Kindersicherheit GmbH

Theodor-Heuss-Strasse 9

89340 Leipheim

Germany