

Adell



KITCHEN COLLECTION
2019

ULTIMATE WATER EXPERIENCE



Established in 1981 we are proud to have ADELL, a leader company that manufactures its own mixers / taps. ADELL is the outstanding example of an independent and fully integrated Turkey-based manufacturer, performing the complete production cycle with technology and management solutions ahead of its time.

With our 38 years' experience, we are happy to announce our new company future vision: ADELL – Water experience for your lifestyle.

We recognize that everyone's taste and individual requirements vary when re-fitting or adjusting your bathroom. And our main experience is water. So we combine this philosophy. It's confusing market with many brands offering cheaper inferior products of a lesser quality. That's where we aim to assist. Browse through pages of inspiration to find exactly what you're looking for and for further information and pricing.

Great designs have created a truly global language, ADELL is aiming to be a forefront company that makes use of water in way that people would like.

We use the latest technology to manufacture our own mixers and we are proud of this. Our design philosophy is 'Designed in Istanbul & Made in Turkey'. All design and crucial stages of product conception, development and manufacturing are performed within our facilities in Istanbul, one of the most fascinating city of the world. We have both external and internal designers. All our design and production teams work for you to have a contemporary look and feel with your modern bathrooms with pure and stylish ADELL products.

ADELL is now one of the well-known brands in the industry and is very sensitive to the efficient use of resources, water and energy, and continuous development of innovative solutions in design, materials, function and performance. We take care of our water culture history, and show our respect with ADELL AB-I HAYAT water culture museum inside our facility.

We are perfectly equipped to provide water experiences that exceed all expectations – both today and tomorrow. We are passionate and are proud to be at the heart of changing global landscape.

Yours Sincerely,

Recep Ali Topçu
Adell Faucet & Valve Manufacturing Co. Inc.
Chairman

DESIGN, PRODUCTION AND TECHNOLOGY AT ADELL.

Production potential based on the advanced production technology, team of experts committed to work with passion and years of experience are behind high qualified Adell products.



DESIGN AND INNOVATION

Innovation and design are our most important values. Adell has unique aesthetical and stylish designs which protect the water and environment. We believe a good design will catch everyone. Our products are designed by our design experts according to customer demands and expectations, considering the national and international standards and our design criteria. Functionality, energy saving, aesthetics, ergonomics, mountability and maintainability, size compatibility, safety, production life span, testability, modularity, packaging and shipping, impact on environmental pollution, waste utilization, production techniques and cost issues are taken into consideration at the design phase. Adell has brought numerous innovations in the industry with its innovative approach.

MOULD PRODUCTION

Mould is the base and the start-up phase of our work. High quality can only be produced with well-designed and professionally taken moulds. Mould developing is processed using the most precision CNC workbenches. Core, casting and hot working moulds, designed using the 3D Unigraphics CAD-Programs in computer environment, are made by cutting the steel blocks in microns with high precision. High temperature resisting steel blocks and copper-beryllium metallic materials are used in moulds. The steel molded becomes ready for draft casting with heat treatment.

ROUGHCAST

Drafts are produced in two different ways: casting and hot forging/press. Sand mixtures, obtained by mixing the green sand with resin, silica sand and appropriate catalyst and chemicals in sand preparation machines, are formed into cores in the automatic coremaking machines. Water grooves in the mixers are created in this way. Draft is produced by casting high qualified ingot brasses, melted in the electric induction furnaces with high temperature, into the moulds placed in the casting machines as cores. Runners are cut by removing the core sands; so the mixer body drafts can be obtained using the casting method. High qualified brass rod raw material is cut in determined measures at the process plans, is annealed in appropriate heat and finally formed into drafts with hot working/ forging method using high tonnage presses.

SURFACE TREATMENTS

Product surfaces are the elements on which we lay too much stress as they are a kind of last clothing of our products. Coating protects the surfaces from corrosion and mechanical effects, gives the surfaces an aesthetical appearance and enables them to harmonize with other accessories in kitchen compartments.



MECHANIC OPERATIONS

Drafts, whose runners are cut and whose burrs are taken off, are processed on CNC controlled benches, in the automatic transfer machines which carry out all operations named as mechanic operations such as turning, drilling, thread cutting and screw cutting. In this section, various internal parts of the mixers such as packing, couplings, nipples, shafts are also produced from the high qualified brass rods, using multi spindle turning devices on CNC automatic machines.

A strict quality control procedure is applied at all phases of production performed within ISO 9001 Quality Management Systems and during montage.

LABORATORY

Laboratory R&D activities are the studies which will carry us into future. The basic approach of our R&D unit is to spread on effort to ease the life and make life standards safer and more comfortable for people. Adell's laboratory centre has the modern laboratory systems required by the related standards.

ASSEMBLING, TESTING, PACKAGING

Product quality is developed with the perfect combination of fine components, details and precision workmanship. Each part is picked and scaled carefully with this approach.

The product is mounted by assembling the product body with the parts such as cartridge, lever, aerator and screw.

The assembled products are subject to 100% leak-tightness, Functionality, and resistance to pressure tests in high precision testing devices. In addition, they are tested in life span, flow rate, sound and surface coating strength through the random method.

LOGISTICS

Our products meet our customers, vendors and users through our effectively managed logistics process. Requests are delivered to our customers properly, timely, expeditiously, faultlessly and carefully by means of modern warehouse management systems and programs. The packaged products are taken to the storage area in order to be shipped to the customers in accordance with the shipment programs.

PERFECT COMBINATION OF DIFFERENT MATERIALS FOR SUSTAINABLE QUALITY.

From which parts does a mixer consist? Excellent details, durable components, compatible hardware result in Adell quality. High standard, long life combined Adell mixers superior performance and long term performance thanks to the compatibility of all components and spare parts and durability. Carefully engineered, all parts complying with the standards.

ERGONOMIC Handles

Adell handles are produced of high quality zinc material. It provides ease of use with ergonomic forms that grip the hand.

%100 BRASS Mixer spouts

From quality raw material produced long-lasting chic of the sink. Ergonomic and easy to use In forms and in different sizes for your to use the water comfortably.

PLUMBER FRIENDLY Fixing deck-mounted parts

Adell mixer connections made from stainless and brass raw metarial. It provides to easy installation, easy replacement and easy maintenance.

WATER SAVING Aerators

Aerators are critical parts that determine the overall performance of a mixers. In the aerators, the water flow is enriched with plenty of air. This ensures that the water is like a soft, non-splashing flow and full shower drops. These aerators allow you to save up to 50% from water gives with a softer flow with its ability to mix water with air.

%100 BRASS Body

It is produced from high grade brass raw material by technological casting system. The wall thicknesses are designed to meet performance criteria for water passages.

GUARANTEED FOR MORE THAN 1.000.000 CYCLES Ceramic cartridges

Cartridges are the heart and most important working parts of mixers. Adell products are made of long-lasting and quality cartridges with Spanish Sedal Brand ceramic discs. It has also 35 mm, 40 mm, with legs and without legs. We also use special cartridges in some series. Full tightness, heat resistance, abrasion resistant, but all are long lasting.

SS304 STAINLESS STEEL Flexible hoses

Basin and kitchen mixer come along with %100 tested leak-proof stainless steel flexible hoses. They are healthy and strong.

Adell
Kelvin

Flexibility Meets Design

Kelvin is a living example of the complementary effect of armature design on the whole of space with its aesthetically designed geometric forms and soft circular finishes. Completely Turkish design and production, the mixer completes the color concept of the kitchen with chrome, beige and black color alternatives.

Kelvin has the flexibility to deliver water to every corner of even double sinks with its spiraled head and 360° swivel spout. At the end of Use, Adell MagnetClick™ magnetic system makes it easy to pull back the hood and pin it down. In addition, Kelvin's superior water experience is under the guarantee of Adell for 10 years.

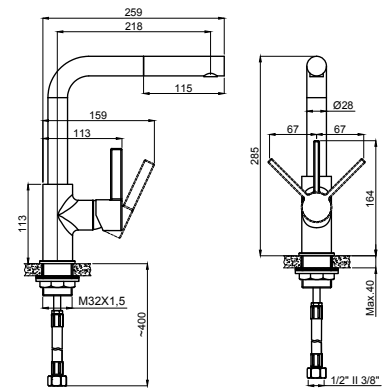


- Handle can be used left and right.
- Washing area 800mm.
- Double function hand shower
- Magnetic connection hand shower.

NEW



15731131 - 3/8"
15734431 - 1/2"
Kelvin
Pull Out Kitchen Mixer
360° Swivel Spout
Box : 6

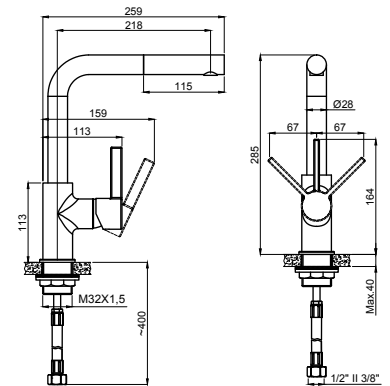


- Handle can be used left and right.
- Washing area 800mm.
- Double function hand shower
- Perfect magnetic connection hand shower.

NEW



15731134 - 3/8"
15734434 - 1/2"
Kelvin
Pull Out Kitchen Mixer
360° Swivel Spout
Black
Box : 6

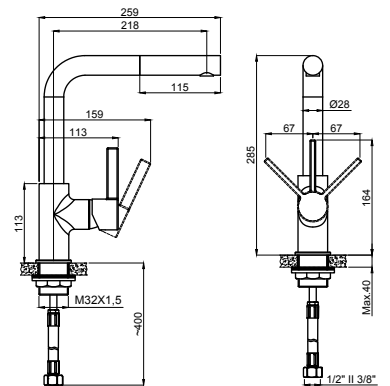


- Handle can be used left and right.
- Washing area 800mm.
- Double function hand shower
- Perfect magnetic connection hand shower.

NEW



15731136 - 3/8"
15734436 - 1/2"
Kelvin
Pull Out Kitchen Mixer
360° Swivel Spout
White
Box : 6



- Handle can be used left and right.
- Washing area 800mm.
- Double function hand shower
- Perfect magnetic connection hand shower.

Adell Lento



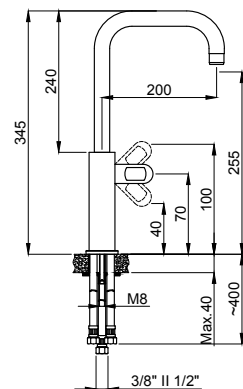
In harmony or
in contrast:
Choose your
colour.

NEW



15491101-3/8"
15494401-1/2"
Kitchen Mixer
W. Boiler Outlet
Swivel Spout
Box : 5

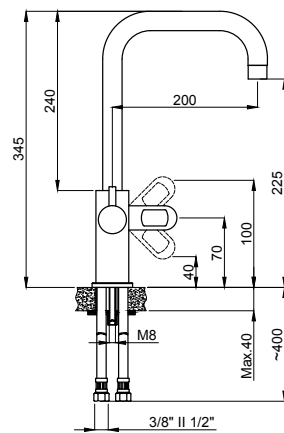
• Handle can be used left and right.



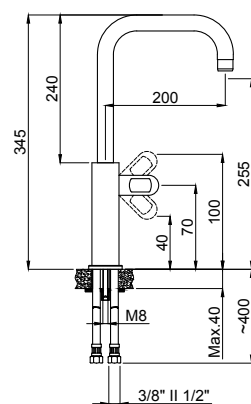
NEW



15491111-3/8"
15494451-1/2"
Kitchen Mixer
W. Inlet For Filtered Water
Swivel Spout
Brass Body & Spout
Box : 5



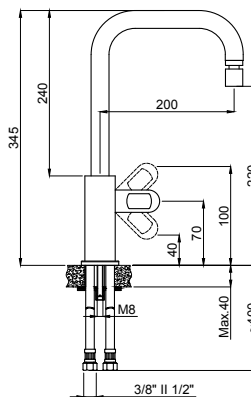
15492331 - 3/8"
15494431 - 1/2"
Kitchen Mixer
360° Swivel Spout
Box : 8



• Handle can be used left and right.



15492341 - 3/8"
15494441 - 1/2"
Kitchen Mixer
360° Swivel Spout
Box : 8

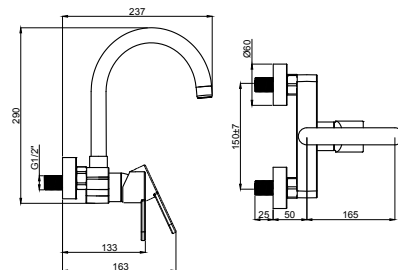


• Handle can be used left and right.
• Movable joint, routable smooth flow.

NEW

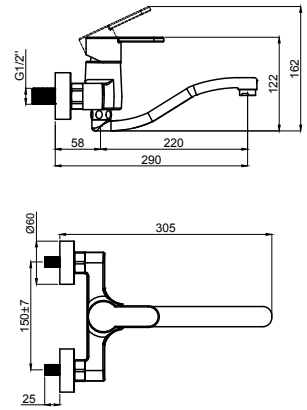


15490421
Wall Kitchen Mixer
W. Top Spoud
Box : 10

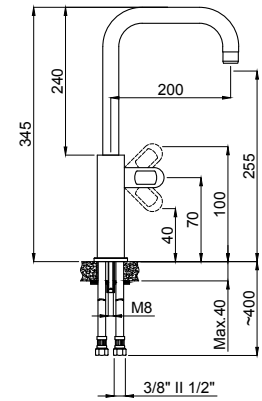




15491221
Wall Kitchen Mixer
Swivel Spoud
Box : 10



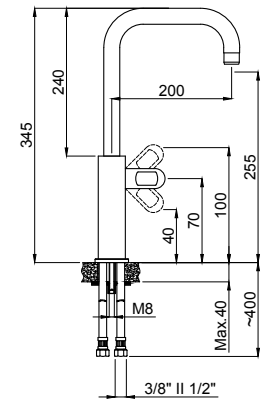
15492306 - 3/8"
15494406 - 1/2"
Kitchen Mixer
360° Swivel Spout
Granite White Chrome
Box :8



• Handle can be used left and right.



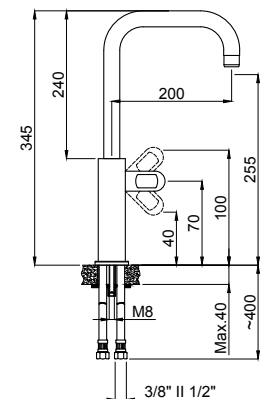
15492335 - 3/8"
15494435 - 1/2"
Kitchen Mixer
360° Swivel Spout
Granite Cream Chrome
Box : 8



• Handle can be used left and right.



15492305 - 3/8"
15494405 - 1/2"
Kitchen Mixer
360° Swivel Spout
Granite Black Chrome
Box : 8



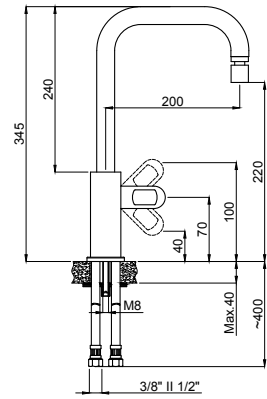
• Handle can be used left and right.



15492346 - 3/8"
15494446 - 1/2"
Kitchen Mixer
360° Swivel Spout
Granite White
Box : 8



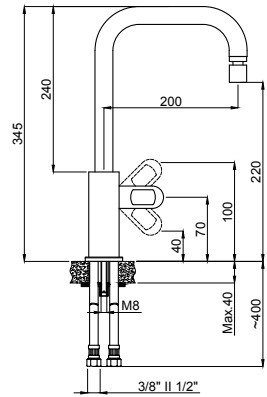
- Handle can be used left and right.
- Movable joint, routable smooth flow.



15492325 - 3/8"
15494425 - 1/2"
Kitchen Mixer
360° Swivel Spout
Granite Cream
Box : 8



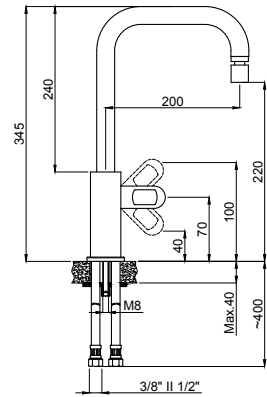
- Handle can be used left and right.
- Movable joint, routable smooth flow.



15492315 - 3/8"
15494415 - 1/2"
Kitchen Mixer
360° Swivel Spout
Granite Black
Box : 8



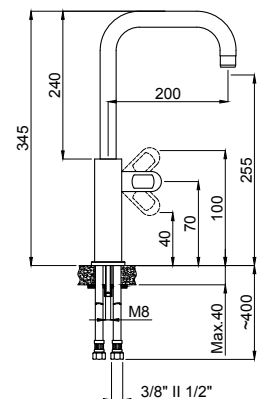
- Handle can be used left and right.
- Movable joint, routable smooth flow.



15492338 - 3/8"
15494438 - 1/2"
Kitchen Mixer
360° Swivel Spout
Gold
Box : 8



- Long lasting PVD coating
- Handle can be used left and right.



Adell Rondo V2

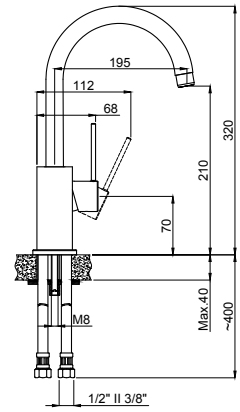


Modern design
and high
performance

Suitable for modern kitchens



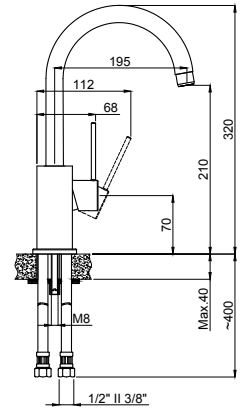
15162321 - 3/8"
15164431 - 1/2"
Kitchen Mixer
360° Swivel Spout
Box : 8



• Handle can be used left and right.



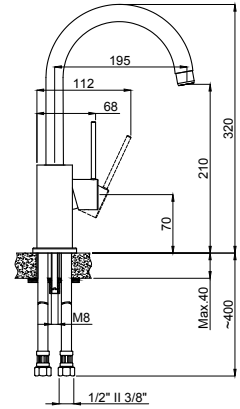
15162337 - 3/8"
15164437 - 1/2"
Kitchen Mixer
360° Swivel Spout
Grey
Box : 8



• Handle can be used left and right.



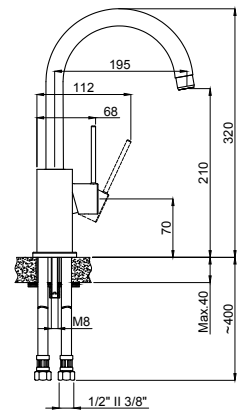
15162334 - 3/8"
15164434 - 1/2"
Kitchen Mixer
360° Swivel Spout
Black
Box : 8



• Handle can be used left and right.



15162336 - 3/8"
15164436 - 1/2"
Kitchen Mixer
360° Swivel Spout
Super White
Box : 8



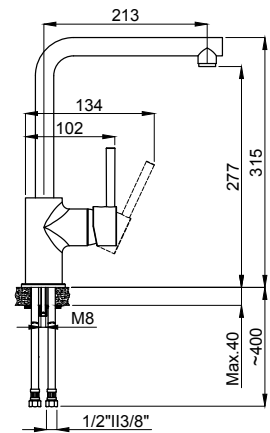
• Handle can be used left and right.

Adell Inova 2

NEW



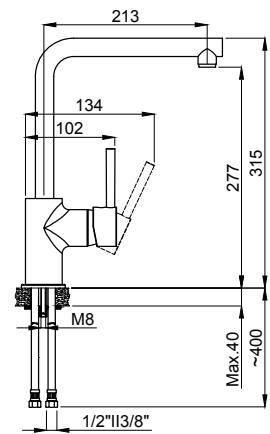
15293436 - 3/8"
15294436 - 1/2"
Inova 2
Kitchen Mixer
360° Swivel Spout
White
Box : 6



NEW



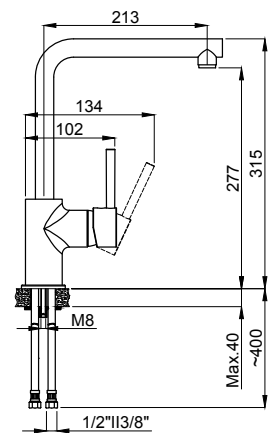
15293446 - 3/8"
15294446 - 1/2"
Inova 2
Kitchen Mixer
360° Swivel Spout
Biege
Box : 6



NEW



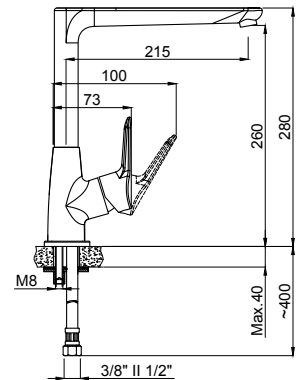
15293434 - 3/8"
15294434 - 1/2"
Inova 2
Kitchen Mixer
360° Swivel Spout
Black
Box : 6



Adell Flap Fludo



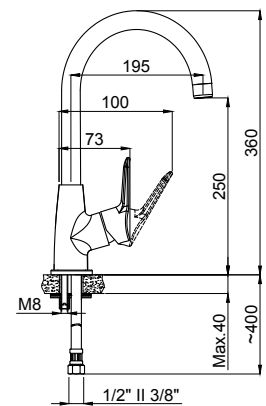
15672321 - 3/8"
15674421 - 1/2"
Flap
Kitchen Mixer
360° Swivel Spout
Box : 8



• Handle can be used left and right.



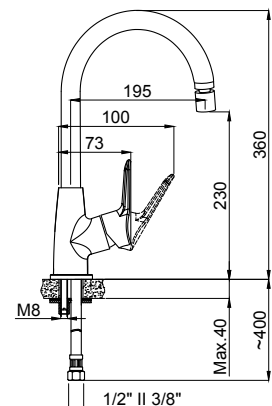
15672331 - 3/8"
15674431 - 1/2"
Fludo
Kitchen Mixer
360° Swivel Spout
Box : 8



• Handle can be used left and right.



15672341 - 3/8"
15674441 - 1/2"
Fludo
Kitchen Mixer
360° Swivel Spout
Box : 8



• Handle can be used left and right.
• Movable joint, routable smooth flow.

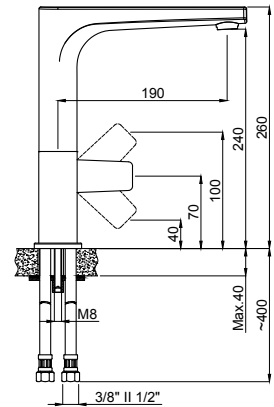
Adell Azure



15682338 - 3/8"
15684438 - 1/2"
Kitchen Mixer
360° Swivel Spout
Gold
Box : 8



Easy cleanable
silicone
perforator



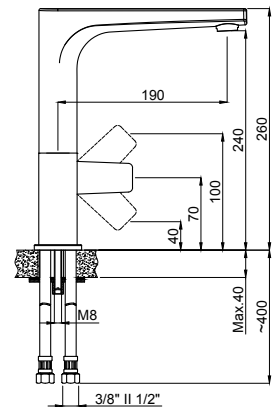
- Long lasting PVD coating
- Handle can be used left and right.



15682336 - 3/8"
15684436 - 1/2"
Kitchen Mixer
360° Swivel Spout
White Chrome
Box : 8



Easy cleanable
silicone
perforator



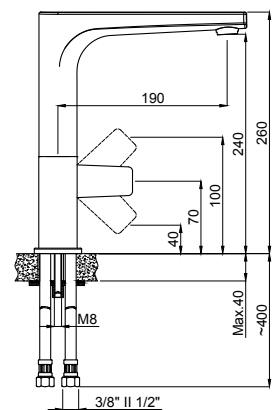
- Handle can be used left and right.



15682344 - 3/8"
15682424 - 1/2"
Kitchen Mixer
360° Swivel Spout
Black Chrome
Box : 8



Easy cleanable
silicone
perforator



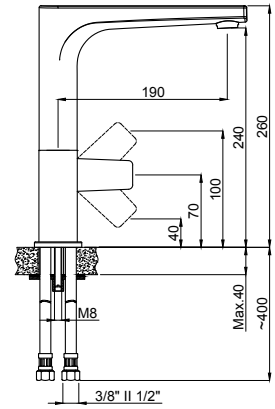
- Handle can be used left and right.



15682331 - 3/8"
15684431 - 1/2"
Kitchen Mixer
360° Swivel Spout
Box : 8



Easy cleanable
silicone
perforator

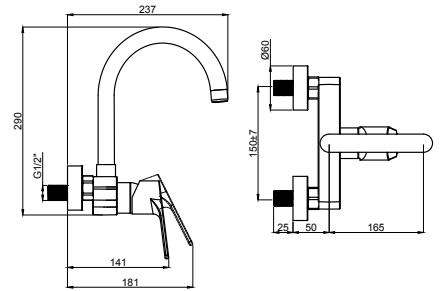


• Handle can be used left and right.

NEW



15680421
Wall Kitchen Mixer
W. Top Spoud
Box : 10



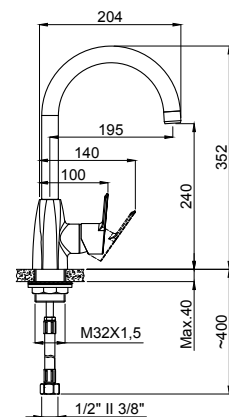
Impressive modern-classic

Adell Azure, Soft bends meet with straight surfaces to create the unique design, and to be agreeable for modern and classic pleasures.

Adell Neon



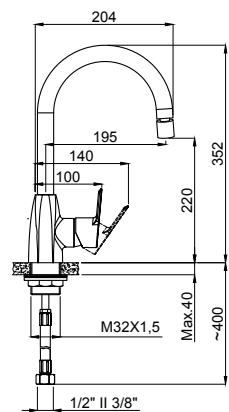
15711101 - 3/8"
15714401 - 1/2"
Kitchen Mixer
360° Swivel Spout
Box : 8



- Handle can be used left and right.



15711111 - 3/8"
15714411 - 1/2"
Kitchen Mixer
360° Swivel Spout
Box : 8

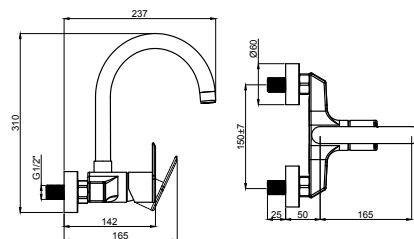


- Handle can be used left and right.
- Movable joint, routable smooth flow.

NEW



15711231
Wall Kitchen Mixer
W. Top Spoud
Box : 10

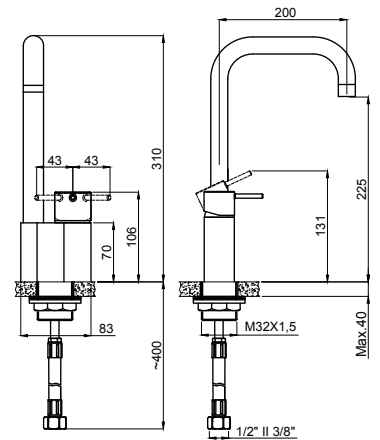




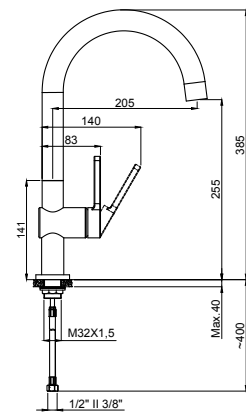
Adell Rondo Slim Forte



15162331 - 3/8"
15164431 - 1/2"
Rondo
Kitchen Mixer
360° Swivel Spout
Box : 8



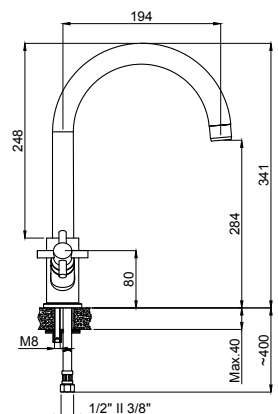
15062331 - 3/8"
15064431 - 1/2"
Slim
Kitchen Mixer
360° Swivel Spout
Box : 8



• Handle can be used left and right.



15301131 - 3/8"
15304431 - 1/2"
Forte
Kitchen Mixer
360° Swivel Spout
Box : 8

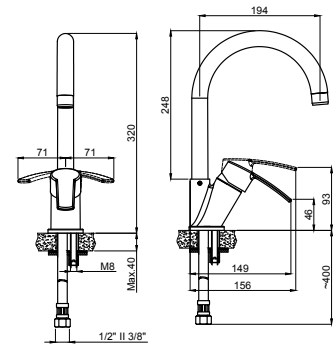


• 90° Ceramic diverter

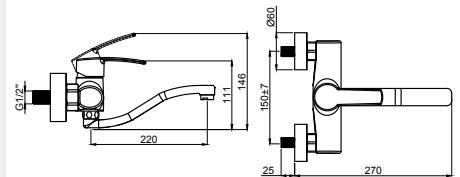
Adell Dyno Luna Arda



15392331 - 3/8"
15394431 - 1/2"
Dyno
Kitchen Mixer
360° Swivel Spout
Box : 8



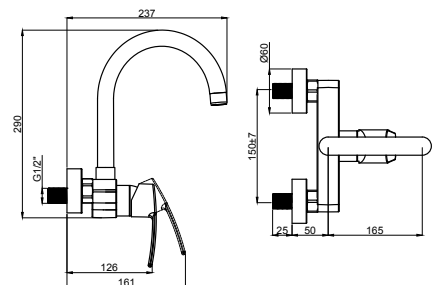
15391221
Dyno
Wall Kitchen Mixer
Swivel Spout
Box : 8



NEW

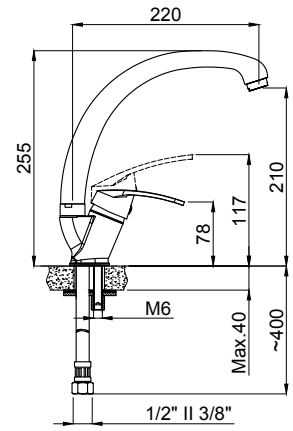


15390421
Dyno
Wall Kitchen Mixer
W. Top Spout
Box : 10

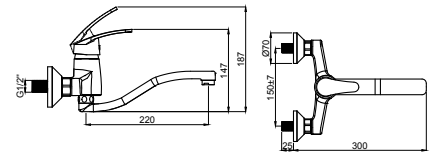




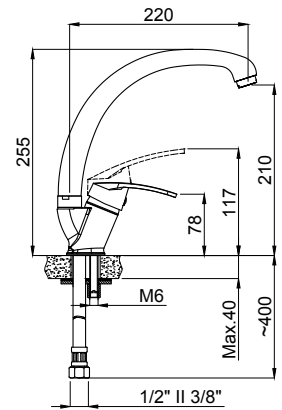
15021131 - 3/8"
 15024431 - 1/2"
 Luna
 Kitchen Mixer
 360° Swivel Spout
 Box : 10



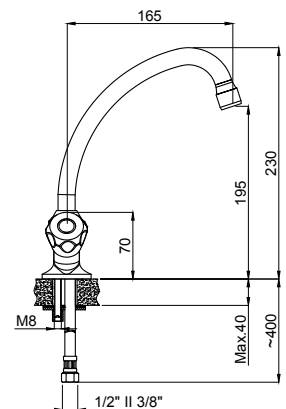
15021221
 Luna
 Wall Kitchen Mixer
 Swivel Spout
 Box : 10



15194031 - 3/8"
 15194731 - 1/2"
 Arda
 Kitchen Mixer
 360° Swivel Spout
 Box : 10



15321131 - 3/8"
 15324401 - 1/2"
 Venüs
 Kitchen Mixer
 360° Swivel Spout
 Box : 10



Adell Pulldown Kitchen Mixers

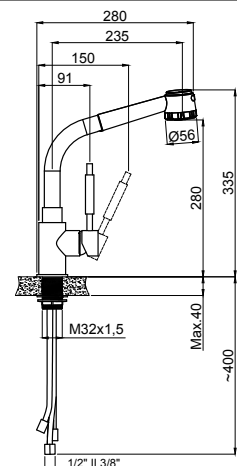
We are very passionate to combine design and function in the kitchen.

We believe a home kitchen is the place for the most intimate moments and a home kitchen is the center of that house! Innovative, functional Adell kitchen mixers enhance your kitchen. The most fashionable luminaries, new trends, new lines for your kitchen are stylish and ergonomic designs.



15282331 - 3/8"
15284431 - 1/2"
Vendi
Pull Out Kitchen Mixer
360° Swivel Spout
Box : 6

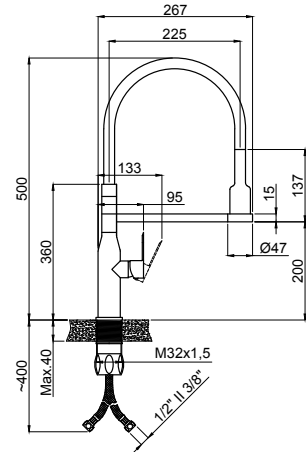
- Handle can be used left and right.
- Washing area 800mm.
- Double function hand shower





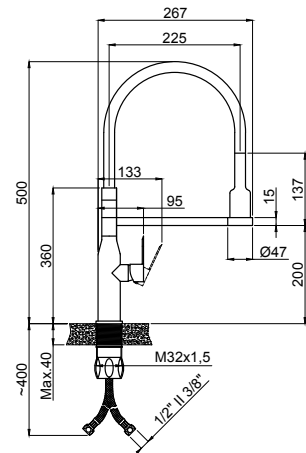
15284731 - 3/8"
 15284331 - 1/2"
 Luco Black
 Kitchen Mixer
 Swivel Spout
 Box : 5

- Handle can be used left and right.
- Flexible pipe.



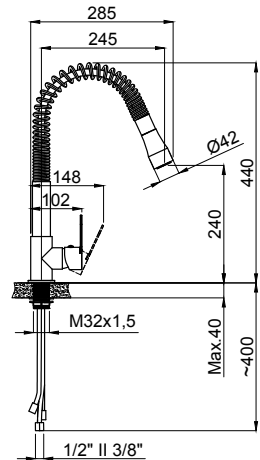
15284737 - 3/8"
 15284337 - 1/2"
 Luco Black
 Kitchen Mixer
 Swivel Spout
 Satin
 Box : 5

- Handle can be used left and right.
- Flexible pipe.



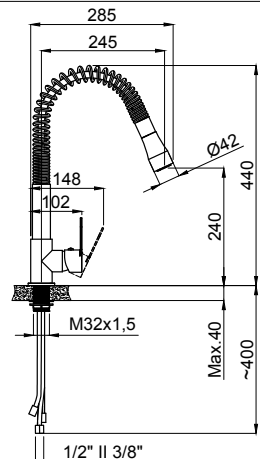
15272331 - 3/8"
 15272361 - 1/2"
 Hena Pull Out
 Kitchen Mixer
 360° Swivel Spout
 Box : 6

- Handle can be used left and right.
- Washing area 800mm.



15272337 - 3/8"
 15274337 - 1/2"
 Hena Pull Out
 Kitchen Mixer
 360° Swivel Spout
 Satin
 Box : 6

- Handle can be used left and right.
- Washing area 800mm.



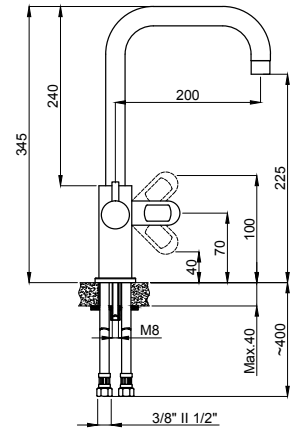
Adell
Advanced
Kitchen
Mixers



NEW



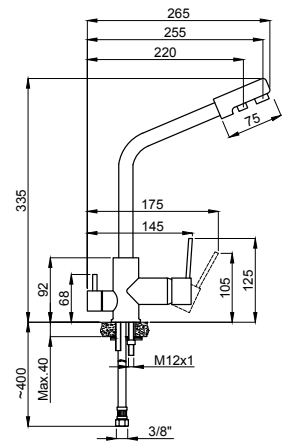
15491111-3/8"
15494451-1/2"
Lento Kitchen Mixer
W. Inlet For Filtered Water
Swivel Spout
Brass Body & Spout
Box : 5



15222341 - 3/8"
15224441 - 1/2"
Volte Kitchen Mixer
W. Inlet For Filtered Water
Swivel Spout
Brass Body & Spout
Box : 8



W. Inlet For Filtered



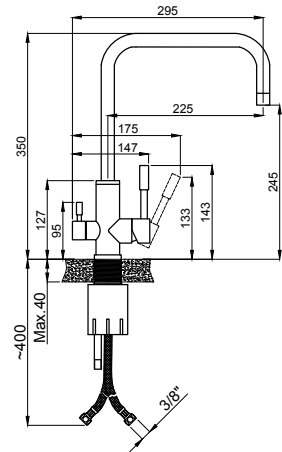
• 3 outlets, hot water cold water and drinking water



15231237-3/8"
15234437-1/2"
509 V2 Inox
Kitchen Mixer
W. Inlet For Filtered Water
Swivel Spout Stainless
Steel Body & Spout
Box : 5



W. Inlet For Filtered



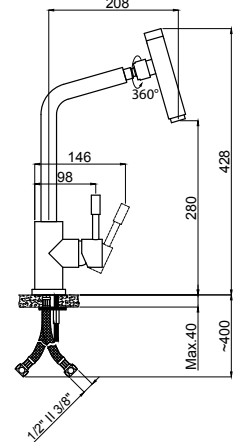
• 3 outlets, hot water cold water and drinking water



15271337 - 3/8"
15274437 - 1/2"
506 Inox Kitchen Mixer
Swivel Spout Stainless
Steel
Box : 5



360° Movable



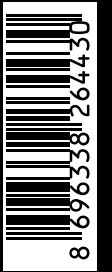
• Handle can be used left and right.
• Movable joint, routable smooth flow.

Adell



Adell Armatür ve Vana Fabrikaları A.Ş.

İkitelli Organize Sanayi Bölgesi Mahallesi
Hürriyet Bulvarı No:54 Başakşehir - İstanbul - Türkiye
Tel +90 212 486 20 00 - pbx Fax +90 212 485 48 40
info@adell.com www.adell.com



ADELL ÜMBR-EN 20/10/2018 - 10031014

