



Safely selecting the correct capacity winch

The maximum weight the electric boat ramp winch can haul depends on the angle (slope) of the boat ramp, the condition of both the ramp and the trailer/trolley wheels and the total mass of your boat and trailer/trolley .

Use the chart below in to assess the maximum weight to safely haul boat and trailer/trolley against the angle of the ramp.

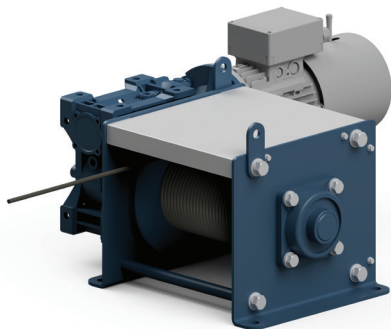
1. Calculate the ramp angle or slope (rise over distance) and gross mass of boat and trailer/trolley.

2. Select model using the table below.

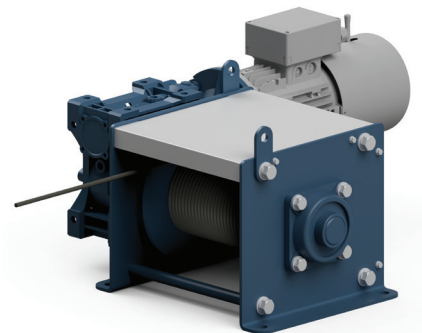
Be assured that the winch you have selected is rated to do the job. KIO GRV & EBRW series are rated on the full drum (30m wire rope) and not just the first layer.



▶ KIO GRV Series Winch



▶ EBRW3000 Winch



▶ EBRW4500 Winch

Winch Capability vs Angle vs Boat Mass*

Angle of Ramp Model No.	7° (1:8)	10° (1:6)	14° (1:4)
GRV-300	1800 kg	1350 kg	1000 kg
GRV-500	3000 kg	2250 kg	1675 kg
EBRW3000	4100 kg	3000 kg	2300 kg
EBRW4500	6200 kg	4500 kg	3500 kg

*Based on winch with full drum (30 m) and hauling wheel load on a firm smooth surface.