

“

*Affordable luxury wristwatches in classic  
minimalistic design, vintage styled details  
packed with high-end product experiences.*

”

# BECOMING THE AFFORDABLE DREAM WATCH

We felt that many new watch brands were being different by being very modern in their expressions, or pushing into the fashion market with price as the differentiator. So our own desire of buying classic designs with a luxury feel was hard to satisfy without paying the luxury cost of the big brands.

We therefore wanted to make great classic designs with a minimalistic expression and small vintage details, all in an 'affordable luxury'

category - a fast growing segment.

With a vision to be relevant today, tomorrow and beyond, our focus is to make simple yet spectacular timepieces for the everyday gent.

For us, vintage is not just a reference of style - it is the journey to becoming it. The journey (life) will take you through eventful moments and memorable days to occasions that change your whole perspective. We hope that one day your watch will make you look back at it all.



1844 Chronograph



ABOUT VINTAGE

SEE MORE AT [ABOUTVINTAGE.COM](http://ABOUTVINTAGE.COM)

# HOW IT ALL STARTED

Two childhood friends, a white beach in Mexico, a common passion for watches and an entrepreneur's itch to create... this is the recipe of a humble Danish watch brand on a global path.

We are back in 2013, we are away on a sunny holiday to the beautiful Caribbean, sitting on a pearl white stranded beach with a bucket of cold Corona's. We had one of our usual chats about what new vintage timepieces we each dreamed of - and what piece we would have to sell to afford it.

Maybe it was the holiday feeling or the view of the endless horizon, but this time the conversation led us to start talking about our hopes and dreams for the future.

The dream of being creative, independent and creating something from scratch had grown strongly in both of us the last couple of years - combine that with the hope of one day having the perfect watch collection - and multiply it with an empty bucket of lime infused Corona's... About Vintage was born.

*LEFT*

**THOMAS G. ANDERSEN**

CO-FOUNDER

*RIGHT*

**SEBASTIAN SKOV REGESER**

CO-FOUNDER



# OUR COLLECTIONS

We strive to make pieces where simplicity and balance is key, combining classic vintage details with small modern elements. With this approach our designs have a coherent and classic look, while offering different expressions to fit individual desires. To name each model, we look back in time to find important moments in the history of the watch to acknowledge those milestones.



1969 Vintage

# PRODUCT QUALITY & STRATEGY

Danish designed products with a premium look and feel, at affordable prices – combined with a 'no discount / no sale' strategy.



## PACKAGING

All models are delivered in our signature box - handmade from solid wood.

## PRODUCTION

Well renowned (ISO 9001 certified) and CSR (SEDEX/SMETA) responsible factories.

Designed as classics, each model is designed to stay unless as limited edition. 1-2 new models, styles or collection released per year.

Procurement and quality assessment completed to find the best supplier and backup suppliers - steady production flow & stock.

## MATERIALS

Scratch free Sapphire\* Crystal Glass with anti-reflective coating

\*(note that model 1969 uses a super-domed mineral glass and not sapphire)

All cases are made from 316L stainless precision steel. Gold/Rose Gold models are with ISO 9001 certified coating.

Straps are made from custom molds, in genuine leather from Italy. All with quick release (interchangeable strap), so customers can change the strap in seconds by hand (no tools required).

# 1969 VINTAGE / UNISEX / QUARTZ

1969 was the year the world's first Quartz watch was released – This movement rewrote horology with its remarkable accuracy, smaller size, while at the same time making wristwatches affordable.

Our first unisex collection is designed around such Quartz movement, together with vintage details. Therefore we named this timepiece 1969 Vintage.



SEE MORE AT [ABOUTVINTAGE.COM](http://ABOUTVINTAGE.COM)

**GLASS** MINERAL CRYSTAL, SUPER DOMED  
**CASE** 316L STEEL, GOLD OR ROSE GOLD COATED, 36X7MM OR 39X8MM  
**STRAP** ITALIAN GENUINE LEATHER, PIN BUCKLE, 18 OR 20MM WIDTH

**MOVEMENT** RONDA 763 (QUARTZ)  
**WATER RES.** 3 ATM TESTED (AVOID USE WHEN DIVING)  
**WARRANTY** 2 YEARS AGAINST DEFECTS



SKU 319014 (36mm) SKU 119010 (39mm)  
REF AV1969SX1 REF AV1969SX1

**1969 STEEL / BLACK**  
BLACK STRAP

MSRP (EU)	MSRP (NON-EU)
<b>229.00 EUR</b>	<b>229.00 USD</b>
INCL. VAT	EX. VAT



SKU 318178 (36mm) SKU 118174 (39mm)  
REF AV1969SX1 REF AV1969SX1

**1969 STEEL / WHITE**  
DARK BROWN STRAP

MSRP (EU)	MSRP (NON-EU)
<b>229.00 EUR</b>	<b>229.00 USD</b>
INCL. VAT	EX. VAT



SKU 321116 (36mm) SKU 121112 (39mm)  
REF AV1969RX1 REF AV1969RX1

**1969 ROSE GOLD / BLACK**  
BLACK STRAP

MSRP (EU)	MSRP (NON-EU)
<b>249.00 EUR</b>	<b>249.00 USD</b>
INCL. VAT	EX. VAT



SKU 322205 (36mm) SKU 122201 (39mm)  
REF AV1969GX1 REF AV1969GX1

**1969 GOLD / WHITE**  
BLACK STRAP

MSRP (EU)	MSRP (NON-EU)
<b>249.00 EUR</b>	<b>249.00 USD</b>
INCL. VAT	EX. VAT



SKU 323028 (36mm) SKU 123024 (39mm)  
REF AV1969SX1 REF AV1969SX1

**1969 STEEL / MIDNIGHT BLUE**  
BROWN STRAP

MSRP (EU)	MSRP (NON-EU)
<b>229.00 EUR</b>	<b>229.00 USD</b>
INCL. VAT	EX. VAT



SKU 320164 (36mm) SKU 120160 (39mm)  
REF AV1969RX1 REF AV1969RX1

**1969 ROSE GOLD / WHITE**  
DARK BROWN STRAP

MSRP (EU)	MSRP (NON-EU)
<b>249.00 EUR</b>	<b>249.00 USD</b>
INCL. VAT	EX. VAT



SKU 324186 (36mm) SKU 124182 (39mm)  
REF AV1969GX1 REF AV1969GX1

**1969 GOLD / MIDNIGHT BLUE**  
BROWN STRAP

MSRP (EU)	MSRP (NON-EU)
<b>249.00 EUR</b>	<b>249.00 USD</b>
INCL. VAT	EX. VAT

# 1815

1844 CHRONOGRAPH / QUARTZ

1815 was the year the chronograph technique was invented. Later in 1844 the chronograph was updated to include the resetting feature, which allowed successive measurements - thus the first commercial chronograph was born.



SEE MORE AT [ABOUTVINTAGE.COM](https://www.aboutvintage.com)

**GLASS** SAPHIRE CRYSTAL, ANTI REFLECTIVE COATING, DOMED  
**CASE** 316L STEEL OR ROSE GOLD COATED, 40X11MM  
**STRAP** ITALIAN GENUINE LEATHER, PIN BUCKLE, 20MM WIDTH

**MOVEMENT** MIYOTA 6S11 (QUARTZ)  
**WATER RES.** 5 ATM TESTED (AVOID USE WHEN DIVING)  
**WARRANTY** 2 YEARS AGAINST DEFECTS



SKU 101022  
REF AV1815SX1  
**1815 STEEL / WHITE**  
BROWN STRAP

MSRP (EU)	MSRP (NON-EU)
<b>335.00 EUR</b>	<b>335.00 USD</b>
INCL. VAT	EX. VAT



SKU 103026  
REF AV1844SX1  
**1844 STEEL / WHITE**  
BROWN STRAP

MSRP (EU)	MSRP (NON-EU)
<b>335.00 EUR</b>	<b>335.00 USD</b>
INCL. VAT	EX. VAT



SKU 105129  
REF AV1815RX1  
**1815 ROSE GOLD / WHITE**  
DARK BROWN STRAP

MSRP (EU)	MSRP (NON-EU)
<b>355.00 EUR</b>	<b>355.00 USD</b>
INCL. VAT	EX. VAT



SKU 115012  
REF AV1844SX1  
**1844 STEEL / BLACK**  
BLACK STRAP

MSRP (EU)	MSRP (NON-EU)
<b>335.00 EUR</b>	<b>335.00 USD</b>
INCL. VAT	EX. VAT



SKU 117177  
REF AV1815SX1  
**1815 STEEL / BLUE SUNRAY**  
DARK BROWN STRAP

MSRP (EU)	MSRP (NON-EU)
<b>335.00 EUR</b>	<b>335.00 USD</b>
INCL. VAT	EX. VAT



SKU 116026  
REF AV1815SX1  
**1815 STEEL / GREEN SUNRAY**  
BROWN STRAP

MSRP (EU)	MSRP (NON-EU)
<b>335.00 EUR</b>	<b>335.00 USD</b>
INCL. VAT	EX. VAT

# 1820 AUTOMATIC

Thomas Prest was the first person to register a patent for the self winding watch. The year was 1820. Furthermore it so happens, that our first showroom and office was located on one of the most historical avenues in Copenhagen. The exact address is Frederiksberg Alle 8, 1820 Frederiksberg.

– Therefore, 1820 Automatic



SEE MORE AT [ABOUTVINTAGE.COM](http://ABOUTVINTAGE.COM)

**GLASS** SAPHIRE CRYSTAL, ANTI REFLECTIVE COATING, DOMED  
**CASE** 316L STEEL OR ROSE GOLD COATED, 40X10MM  
**STRAP** ITALIAN GENUINE LEATHER, PIN BUCKLE, 20MM WIDTH

**MOVEMENT** NH35A (AUTOMATIC)  
**WATER RES.** 5 ATM TESTED (AVOID USE WHEN DIVING)  
**WARRANTY** 2 YEARS AGAINST DEFECTS



SKU 108021  
REF AV1820SX1  
**1820 STEEL / WHITE**  
BROWN STRAP

MSRP (EU)	MSRP (NON-EU)
<b>515.00 EUR</b>	<b>515.00 USD</b>
INCL. VAT	EX. VAT



SKU 106126  
REF AV1820RX1  
**1820 ROSE GOLD / WHITE**  
DARK BROWN STRAP

MSRP (EU)	MSRP (NON-EU)
<b>535.00 EUR</b>	<b>535.00 USD</b>
INCL. VAT	EX. VAT



SKU 107055  
REF AV1820SX1  
**1820 STEEL / TWO TONED**  
BROWN CROCO STRAP

MSRP (EU)	MSRP (NON-EU)
<b>515.00 EUR</b>	<b>515.00 USD</b>
INCL. VAT	EX. VAT

# 1971

SWISS MADE / AUTOMATIC

Swiss Made standards have changed over time and were not always defined by law. 1971 was the year of the Swiss Made trademark, which also defines the standards for bearing a Swiss Made timepiece today

– Therefore our first Swiss Made Automatic timepiece carry the name 1971 AUTOMATIC.



SEE MORE AT [ABOUTVINTAGE.COM](https://www.aboutvintage.com)

**GLASS** SAPPHIRE CRYSTAL, FLAT  
**CASE** 316L STEEL, GOLD OR ROSE GOLD COATED, 40X10MM  
**STRAP** ITALIAN GENUINE LEATHER, BUTTERFLY CLASP, 20MM WIDTH

**MOVEMENT** ETA 2824-2 (AUTOMATIC)  
**WATER RES.** 10 ATM TESTED (AVOID USE WHEN DIVING)  
**WARRANTY** 5 YEARS AGAINST DEFECTS





SKU 109028  
REF AV1971SX1  
**1971 STEEL / WHITE**  
BROWN STRAP (LIMITED EDITION)

MSRP (EU)	MSRP (NON-EU)
<b>945.00 EUR</b> INCL. VAT	<b>945.00 USD</b> EX. VAT



SKU 110017  
REF AV1971SX1  
**1971 STEEL / BLACK**  
BLACK STRAP (LIMITED EDITION)

MSRP (EU)	MSRP (NON-EU)
<b>945.00 EUR</b> INCL. VAT	<b>945.00 USD</b> EX. VAT



SKU 111182  
REF AV1971GX1  
**1971 GOLD / WHITE**  
BROWN STRAP

MSRP (EU)	MSRP (NON-EU)
<b>999.00 EUR</b> INCL. VAT	<b>999.00 USD</b> EX. VAT



SKU 112202  
REF AV1971GX1  
**1971 GOLD / BLACK**  
BLACK STRAP

MSRP (EU)	MSRP (NON-EU)
<b>999.00 EUR</b> INCL. VAT	<b>999.00 USD</b> EX. VAT



SKU 113162  
REF AV1971RX1  
**1971 ROSE GOLD / WHITE**  
DARK BROWN STRAP (LIMITED EDITION)

MSRP (EU)	MSRP (NON-EU)
<b>999.00 EUR</b> INCL. VAT	<b>999.00 USD</b> EX. VAT



SKU 114114  
REF AV1971RX1  
**1971 ROSE GOLD / BLACK**  
BLACK STRAP (LIMITED EDITION)

MSRP (EU)	MSRP (NON-EU)
<b>999.00 EUR</b> INCL. VAT	<b>999.00 USD</b> EX. VAT



SKU 125257  
REF AV1971SX1  
**1971 STEEL / NIGHT BLUE SUNRAY**  
DARK BLUE STRAP (LIMITED EDITION)

MSRP (EU)	MSRP (NON-EU)
<b>945.00 EUR</b> INCL. VAT	<b>945.00 USD</b> EX. VAT



SKU 127268  
REF AV1971RX1  
**1971 ROSE GOLD / NIGHT BLUE SUNRAY**  
DARK BLUE STRAP (LIMITED EDITION)

MSRP (EU)	MSRP (NON-EU)
<b>999.00 EUR</b> INCL. VAT	<b>999.00 USD</b> EX. VAT



SKU 126278  
REF AV1971GX1  
**1971 GOLD / NIGHT BLUE SUNRAY**  
DARK BLUE STRAP (LIMITED EDITION)

MSRP (EU)	MSRP (NON-EU)
<b>999.00 EUR</b> INCL. VAT	<b>999.00 USD</b> EX. VAT

# 1926 At'sea

Mankind have been exploring the underwater world for centuries, and 1926 was a game changing year for all sea explorers. Made with a hermetically sealed case for optimal protection the first waterproof wristwatch marked a major step forward – making timekeeping underwater an everyman luxury. Our first diver is a humble celebration of that remarkable achievement. We hope that our 1926 At'Sea will take you on your very own adventure, both below and above the big blue ocean.



SEE MORE AT [ABOUTVINTAGE.COM](https://www.aboutvintage.com)

**GLASS** DOMED SAPPHIRE CRYSTAL WITH ANTI-REFLECTIVE COATING  
**CASE** 316L HIGH PRECISION STAINLESS STEEL, NUMBERED  
**STRAP** 3-LINKED OR 5-LINK BRACELET WITH QUICK RELEASE

**MOVEMENT** TMI VH31 W. SWEEP SECOND HAND, QUARTZ (JAPANESE)  
**WATER RES.** 20 ATM / 200 METER  
**WARRANTY** 2 YEARS AGAINST DEFECTS



SKU 343514  
REF AV1926-39S2T2X1  
**1926 STEEL / BLACK VINTAGE**  
5-LINK

MSRP (EU)	MSRP (NON-EU)
<b>375.00 EUR</b>	<b>375.00 USD</b>
INCL. VAT	EX. VAT



SKU 342500  
REF AV1926-39S2F2X1  
**1926 STEEL / BLACK**  
3-LINK

MSRP (EU)	MSRP (NON-EU)
<b>375.00 EUR</b>	<b>375.00 USD</b>
INCL. VAT	EX. VAT



SKU 340506  
REF AV1926-39SSS3X1  
**1926 STEEL / STEEL BLUE**  
3-LINK

MSRP (EU)	MSRP (NON-EU)
<b>375.00 EUR</b>	<b>375.00 USD</b>
INCL. VAT	EX. VAT



SKU 341510  
REF AV1926-39S3S3X1  
**1926 STEEL / BLUE**  
5-LINK

MSRP (EU)	MSRP (NON-EU)
<b>375.00 EUR</b>	<b>375.00 USD</b>
INCL. VAT	EX. VAT

## 1926 AT'SEA ALL BLACK LIMITED EDITION (999 PCS)

---



SKU 344535  
REF AV1926-39B2F2X1  
**1926 AT'SEA ALL BLACK WHITE**  
BLACK RUBBER

MSRP (EU)	MSRP (NON-EU)
<b>335.00 EUR</b>	<b>335.00 USD</b>
INCL. VAT	EX. VAT



SKU 345525  
REF AV1926-39B2T2X1  
**1926 AT'SEA ALL BLACK VINTAGE**  
NATO

MSRP (EU)	MSRP (NON-EU)
<b>335.00 EUR</b>	<b>335.00 USD</b>
INCL. VAT	EX. VAT

# 1969 PETITE

1969 changed everything. It was the year the world's first Quartz watch was released – and this new type of movement changed the watch industry completely. This movement rewrote horologic history with its remarkable accuracy, smaller size, while at the same time making wristwatches affordable.



**GLASS** DOMED SAPPHIRE CRYSTAL (SCRATCH FREE)  
**CASE** 316L STEEL, GOLD OR ROSE GOLD COATED, 32X7MM  
**STRAP** ITALIAN GENUINE LEATHER, MESH BRACELET, 14MM WIDTH

**MOVEMENT** MIYOTA 6L20 (QUARTZ)  
**WATER RES.** 3 ATM TESTED (SUITABLE FOR RAIN)  
**WARRANTY** 2 YEARS AGAINST DEFECTS



SKU 335243  
REF AV1969P-32GS7X1  
**1969 GOLD / GOLD SUNRAY**  
MESH GOLD STRAP

MSRP (EU)	MSRP (NON-EU)
<b>225.00 EUR</b>	<b>225.00 USD</b>
INCL. VAT	EX. VAT



SKU 334246  
REF AV1969P-32GS4X1  
**1969 GOLD / GREEN SUNRAY**  
MESH GOLD STRAP

MSRP (EU)	MSRP (NON-EU)
<b>225.00 EUR</b>	<b>225.00 USD</b>
INCL. VAT	EX. VAT



SKU 333249  
REF AV1969P-32GS1X1  
**1969 GOLD / WHITE**  
MESH GOLD STRAP

MSRP (EU)	MSRP (NON-EU)
<b>225.00 EUR</b>	<b>225.00 USD</b>
INCL. VAT	EX. VAT



SKU 337230  
REF AV1969P-32RS3X1  
**1969 ROSE GOLD / BLUE SUNRAY**  
MESH ROSE GOLD STRAP

MSRP (EU)	MSRP (NON-EU)
<b>225.00 EUR</b>	<b>225.00 USD</b>
INCL. VAT	EX. VAT



SKU 338237  
REF AV1969P-32RS8X1  
**1969 ROSE GOLD / ROSE**  
MESH ROSE STRAP

MSRP (EU)	MSRP (NON-EU)
<b>225.00 EUR</b>	<b>225.00 USD</b>
INCL. VAT	EX. VAT



SKU 336233  
REF AV1969P-32RS1X1  
**1969 ROSE GOLD / WHITE SUNRAY**  
ROSE MESH STRAP

MSRP (EU)	MSRP (NON-EU)
<b>225.00 EUR</b>	<b>225.00 USD</b>
INCL. VAT	EX. VAT



SKU 331030  
REF AV1969P-32SS5X1  
**1969 STEEL / ROSE SUNRAY**  
STEEL MESH STRAP

MSRP (EU)	MSRP (NON-EU)
<b>199.00 EUR</b>	<b>199.00 USD</b>
INCL. VAT	EX. VAT



SKU 332037  
REF AV1969P-32SS6X1  
**1969 STEEL / SILVER SUNRAY**  
STEEL MESH STRAP

MSRP (EU)	MSRP (NON-EU)
<b>199.00 EUR</b>	<b>199.00 USD</b>
INCL. VAT	EX. VAT



SKU 330033  
REF AV1969P-32SS1X1  
**1969 STEEL / WHITE SUNRAY**  
STEEL MESH STRAP

MSRP (EU)	MSRP (NON-EU)
<b>199.00 EUR</b>	<b>199.00 USD</b>
INCL. VAT	EX. VAT

# 1988 MOONPHASE

Limited Edition, 100 pcs.

ABOUT VINTAGE X FREDERIQUE CONSTANT

This collaboration piece is a perfect example of About Vintage's endeavours to create an accessible luxury timepiece: an alternative to 'the watch in the safe', but still a unique collectable. Our minimalistic design elements, combined with Frederique Constant's beautiful in-house movement creates a remarkable synergy.



#### MOVEMENT

FC-702 MANUFACTURE CALIBER, AUTOMATIC (SWISS MADE). 26 JEWELS, 42 HOURS POWER RESERVE, 28'800 ALT/H. DATE AND MOONPHASE ADJUSTABLE WITH THE CROWN.

#### CASE

3-PARTS POLISHED STAINLESS STEEL, 38.8 MM DIAMETER, CONVEX SAPPHIRE CRYSTAL, SEE-THROUGH CASE BACK, 3 ATM WATER RESISTANCE.

#### DIAL

DEEP BLUE CURVED DIAL WITH STEEL INDEX DOTS AND ROSE GOLD HANDS. MOONPHASE AT 3 O'CLOCK AND DATE COUNTER AT 6 O'CLOCK.

#### STRAP

3 STRAPS OF 18MM CROCO GRAIN - DARK BLUE, BROWN AND BLACK INCLUDING A PERSONAL STRAP TOOL.



SKU 101015  
REF AV1969P-32SS6X1  
**1988 MOONPHASE**  
BLUE CROC STRAP

MSRP (EU)

**3349.00** EUR  
INCL. VAT

MSRP (NON-EU)

**3349.00** USD  
EX. VAT

ONLY AVAILABLE IN SELECTED STORES.

# PIN BUCKLE STRAPS

MSRP (EU)  
49.00 EUR  
INCL. VAT

MSRP (NON-EU)  
49.00 USD  
EX. VAT

Our Pin Buckle straps come as a standard for both our 1969, Chronograph and 1820 collections.

A two piece strap made from high quality leather with About Vintage engraved on the back of the strap. Pin buckle with signature bow logo detail.

Change it by hand in seconds without any tools.



**MATERIAL** ITALIAN LEATHER (GENUINE)  
**BUCKLE** STEEL, GOLD OR ROSE GOLD (PIN BUCKLE)

**WIDTH** 14MM, 18MM OR 20MM  
**STRAP SIZE** 18MM: 17CM / CIRCUMFERENCE 13-18CM  
20MM: 19CM / CIRCUMFERENCE 15-20CM





### BLACK LEATHER

SKU 221010 (20mm-steel)  
SKU 218010 (18mm-steel)  
SKU 214012 (14mm-steel)  
SKU 221201 (20mm-gold)  
SKU 218201 (18mm-gold)  
SKU 214203 (14mm-gold)  
SKU 218119 (18mm-rose gold)  
SKU 218119 (18mm-rose gold)  
SKU 214111 (14mm-rose gold)



### BROWN LEATHER

SKU 221027 (20mm-steel)  
SKU 218027 (18mm-steel)  
SKU 221188 (20mm-gold)  
SKU 218188 (18mm-gold)  
SKU 221126 (20mm-rose gold)  
SKU 218126 (18mm-rose gold)



### DARK BROWN CROCO GRAIN

SKU 221058 (20mm-steel)  
SKU 218058 (18mm-steel)  
SKU 221225 (20mm-gold)  
SKU 218225 (18mm-gold)  
SKU 221157 (20mm-rose gold)  
SKU 218157 (18mm-rose gold)



### BLACK CROCO GRAIN

SKU 221041 (20mm-steel)  
SKU 218041 (18mm-steel)  
SKU 221218 (20mm-gold)  
SKU 218218 (18mm-gold)  
SKU 221140 (20mm-rose gold)  
SKU 218140 (18mm-rose gold)



### DARK BROWN LEATHER

SKU 220174 (20mm-steel)  
SKU 218171 (18mm-steel)  
SKU 214173 (14mm-steel)  
SKU 221195 (20mm-gold)  
SKU 218195 (18mm-gold)  
SKU 214197 (14mm-gold)  
SKU 220167 (20mm-rose gold)  
SKU 218164 (18mm-rose gold)  
SKU 214166 (14mm-rose gold)



### DARK BLUE LEATHER

SKU 221256 (20mm-steel)  
SKU 218256 (18mm-steel)  
SKU 221270 (20mm-gold)  
SKU 218270 (18mm-gold)  
SKU 221263 (20mm-rose gold)  
SKU 218263 (18mm-rose gold)



### DARK GREEN LEATHER

SKU 221287 (20mm-steel)  
SKU 218287 (18mm-steel)  
SKU 221300 (20mm-gold)  
SKU 218300 (18mm-gold)  
SKU 221294 (20mm-rose gold)  
SKU 218294 (18mm-rose gold)



### BEIGE SUEDE

SKU 221317 (20mm-steel)  
SKU 218317 (18mm-steel)  
SKU 221331 (20mm-gold)  
SKU 218331 (18mm-gold)  
SKU 221324 (20mm-rose gold)  
SKU 218324 (18mm-rose gold)



### DARK BLUE SUEDE

SKU 221348 (20mm-steel)  
SKU 218348 (18mm-steel)  
SKU 221362 (20mm-gold)  
SKU 218362 (18mm-gold)  
SKU 221355 (20mm-rose gold)  
SKU 218355 (18mm-rose gold)

# BUTTERFLY CLASP STRAPS

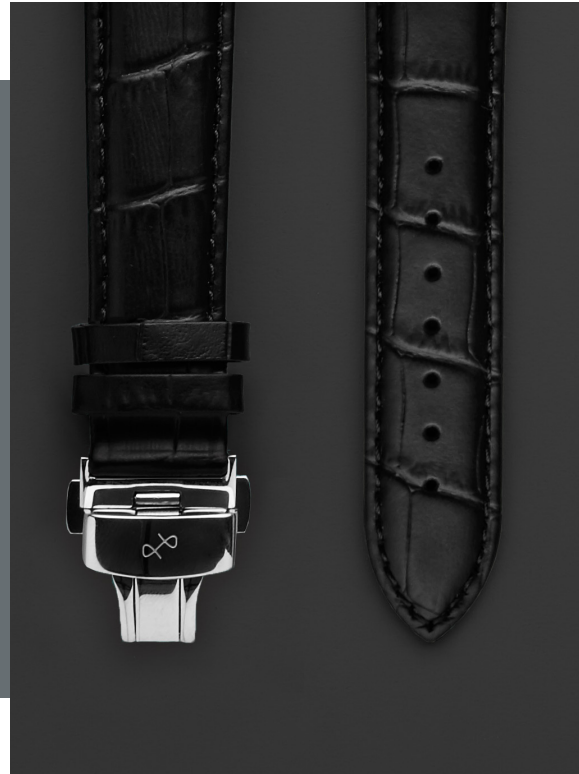
MSRP (EU)  
79.00 EUR  
INCL. VAT

MSRP (NON-EU)  
79.00 USD  
EX. VAT

Our Butterfly Clasp straps comes as a standard for 1971 Swiss Made.

A two piece strap made from high quality leather with About Vintage engraved on the back of the strap. Butterfly Clasp with signature bow logo detail.

Change it by hand in seconds without any tools.



**MATERIAL** ITALIAN LEATHER (GENUINE)  
**BUCKLE** STEEL, GOLD OR ROSE GOLD (BUTTERFLY CLASP)

**WIDTH** 20MM  
**STRAP SIZE** 20MM: 19CM / CIRCUMFERENCE 15-20CM



**BLACK  
LEATHER**

SKU 223014 (steel)  
SKU 223205 (gold)  
SKU 223113 (rose gold)



**BROWN  
LEATHER**

SKU 223021 (steel)  
SKU 223182 (gold)  
SKU 223120 (rose gold)



**DARK BROWN  
CROCO GRAIN**

SKU 223052 (steel)  
SKU 223229 (gold)  
SKU 223151 (rose gold)



**BLACK  
CROCO GRAIN**

SKU 223045 (steel)  
SKU 223212 (gold)  
SKU 223144 (rose gold)



**DARK BROWN  
LEATHER**

SKU 223175 (steel)  
SKU 223199 (gold)  
SKU 223168 (rose gold)



**DARK BLUE  
LEATHER**

SKU 223250 (steel)  
SKU 223274 (gold)  
SKU 223267 (rose gold)

# LINK STRAPS

MSRP (EU)  
**109.00** EUR  
INCL. VAT

MSRP (NON-EU)  
**109.00** USD  
EX. VAT

Our Link straps comes as a standard for 1926 At'sea.

The deployant-clasp has an extra lock to safely secure the watch. The clasp also features four "quick-adjustments" that allow smaller adjustments to obtain the perfect fit.

The "quick-release" makes it easy to switch out the bracelet for another About Vintage strap, without the use of any tools.



**MATERIAL** STAINLESS STEEL  
**WIDTH** 20MM

**STRAP SIZE** 19 cm / circumference 14 - 20.5 cm



STEEL  
3-LINK  
SKU 226503 (20mm)



STEEL  
5-LINK  
SKU 226510 (20mm)

# MESH STRAPS

MSRP (EU)  
49.00 EUR  
INCL. VAT

MSRP (NON-EU)  
49.00 USD  
EX. VAT

Our Mesh straps are standard on the 1969 Petite model but can be used on all models as a great alternative to the traditional leather straps.

A two piece strap made from stainless steel, gold or rose gold coated. Buckle with signature bow logo detail.

Change it by hand in seconds without any tools.



**MATERIAL** STAINLESS STEEL, GOLD OR ROSE GOLD COATED  
**WIDTH** 18MM OR 20MM

**STRAP SIZE** 18MM: 17CM / CIRCUMFERENCE 13-18CM  
20MM: 19CM / CIRCUMFERENCE 15-20CM



**STEEL**  
**MESH BAND**

SKU 221034 (20mm)  
SKU 218034 (18mm)



**GOLD**  
**MESH BAND**

SKU 221249 (20mm)  
SKU 218249 (18mm)



**ROSE GOLD**  
**MESH BAND**

SKU 221232 (20mm)  
SKU 218232 (18mm)





# THE PERFECT FRAME

We desire for our pieces to look the absolute best and overall represent our simple and classic aesthetics.

Therefore we have created our very own display solutions for our pieces. The display collection builds on the same vision of balance between classic vintage details combined with simple modern elements. This resulted in various wood tray formats and elegant display furniture, all made from quality smoked oak and brushed brass details.

All solutions are available as separate items or in collections which will be included in larger orders.

# FULL BASIC SET

---

FOR RETAILERS FREE WITH  
**ORDERS ON 50+ WATCHES**

---

## 33 PCS DISPLAY SET - SKU DSPLSETS01-33PCS

1X GROUNDBOARD	2X 6 PCS TRAY
1X BACKBOARD	1X 12 PCS TRAY
1X BACKBOARD STAND	2X 3 PCS STAND
1X 3 PCS TRAY	1X WATCH BOX

215<sub>EUR</sub> | 249<sub>USD</sub>

## 25 PCS DISPLAY SET - SKU DSPLSETS01-25PCS

1X GROUNDBOARD	1X 6 PCS TRAY
1X BACKBOARD	1X 12 PCS TRAY
1X BACKBOARD STAND	1X 3 PCS STAND
1X 3 PCS TRAY	1X WATCH BOX

175<sub>EUR</sub> | 199<sub>USD</sub>

## 12 PCS DISPLAY SET - SKU DSPLSETS01-12PCS

1X GROUNDBOARD	1X 3 PCS TRAY
1X BACKBOARD	1X 6 PCS TRAY
1X BACKBOARD STAND	1X 3 PCS STAND

125<sub>EUR</sub> | 140<sub>USD</sub>

ALL PRICES ARE EX. VAT



33 PCS DISPLAY SET



25 PCS DISPLAY SET



12 PCS DISPLAY SET

## SPECS

# FULL BASIC SET

## MATERIALS

SMOKED OAK

BRASS DETAILS

ALL PRICES ARE EX. VAT



### BOARD STAND / HOLDER

HEIGHT 4 CM

HEIGHT 4 CM

LENGTH 25 CM

SKU 900021

PRICE

15 EUR

17 USD



### A-SIGN

HEIGHT 19 CM

SKU 900076

PRICE

58 EUR

65 USD



### GROUNDBOARD

HEIGHT 2 CM

WIDTH 50 CM

LENGTH 50 CM

SKU 900069

PRICE

39 EUR

45 USD



### 2 PSC TRAY

HEIGHT	WIDTH 8 CM	LENGTH 5 CM
SMALL 12 CM		
MEDIUM 14.5 CM		
LARGE 17 CM		
SKU 900014		
PRICE	25 EUR	29 USD



### 6 PCS STRAP TRAY

HEIGHT 3 CM	WIDTH 15 CM	LENGTH 29 CM
SKU 900137		
PRICE	16 EUR	19 USD



### 3 PCS TRAY

HEIGHT 4.5 CM	WIDTH 10 CM	LENGTH 18 CM
SKU 900038		
PRICE	23 EUR	26 USD



### 6 PCS TRAY

HEIGHT 4.5 CM	WIDTH 18.5 CM	LENGTH 18 CM
SKU 900045		
PRICE	30 EUR	35 USD



### 12 PCS TRAY

HEIGHT 4.5 CM	WIDTH 27.5 CM	LENGTH 23.5 CM
SKU 900052		
PRICE	45 EUR	52 USD

**SPECS**

# BACKBOARDS

**MATERIALS**

FOAMBOARDS

PRODUCT IS EX. GROUNDBOARD & BOARD STAND

ALL PRICES ARE EX. VAT



**LARGE**

HEIGHT 40 CM

WIDTH 0.3 CM

LENGTH 60 CM

SKU 900106

PRICE

8.5 EUR

10 USD



**SMALL**

HEIGHT 30 CM

WIDTH 0.3 CM

LENGTH 30 CM

SKU 900083

PRICE

8.5 EUR

10 USD



**WIDE**

HEIGHT 30 CM

WIDTH 0.3 CM

LENGTH 75 CM

SKU 900113

PRICE

8.5 EUR

10 USD



**Tall**

HEIGHT 50 CM

WIDTH 0.3 CM

LENGTH 50 CM

SKU 900090

PRICE

8.5 EUR

10 USD

# DISPLAY SOLUTIONS

SMALL COUNTER

1249 EUR | 1499 USD

---

FOR RETAILERS FREE WITH  
ORDERS ON 100+ WATCHES

LARGE COUNTER

1399 EUR | 1699 USD

---

FOR RETAILERS FREE WITH  
ORDERS ON 100+ WATCHES

VINTRINE DISPLAY

1249 EUR | 1499 USD

---

FOR RETAILERS FREE WITH  
ORDERS ON 100+ WATCHES

WALL DISPLAY

999 EUR | 1199 USD

---

FOR RETAILERS FREE WITH  
ORDERS ON 75+ WATCHES

ALL PRICES ARE EX. VAT





2500,0mm

5,75 m<sup>2</sup>

## SPECS

# DISPLAY SOLUTIONS

## MATERIALS

SMOKED OAK

BRASS DETAILS

LED LIGHTING

---

## VITRINE DISPLAY

WIDTH 45 CM

DEPTH 45 CM

HEIGHT 180 CM

## WALL DISPLAY

WIDTH 60 CM

DEPTH 15 CM

HEIGHT 90 CM

## SMALL COUNTER

WIDTH 55 CM

DEPTH 55 CM

HEIGHT 100 CM

## LARGE COUNTER

WIDTH 55 CM

DEPTH 100 CM

HEIGHT 100 CM



VITRINE DISPLAY



WALL DISPLAY



SMALL COUNTER



LARGE COUNTER



## 60+ COUNTRIES WORLDWIDE LONG TAIL

All our retailers and partnerships are carefully selected in order to maintain and develop our brand value.

See full retailer list at [aboutvintage.com](http://aboutvintage.com)



Visit us at: Gothersgade 97, 1123 Copenhagen & // Nygade 6, 1166 Copenhagen

## FLAGSHIP STORE

We do our daily work from the heart of beautiful Copenhagen. Here we do everything from designing new pieces for our future collections and taking care of the office to greeting our lovely visitors and customers from all around the world. We're always here to help you find the right model or have a talk and share our great passion for beautiful and classic timepieces with you.



Nygade 6, 1166 Copenhagen



Gothersgade 97, 1123 Copenhagen

# MEDIA ATTRACTION

We're always honored when someone, a magazine or online media channel features our products or give a great recommendation of us,

We understand the challenges and possibilities you have as a brand in today's digital, global world. Therefore we're always reaching out for the most attractive influencers and medias to ensure that About Vintage will be a name they'll remember, promote and follow further on in our journey.

Today we're frequently to find in various printed and online magazines every month, and have a bunch of lovely ambassadors and influencers walking around wearing and showing off their About Vintage time-pieces.

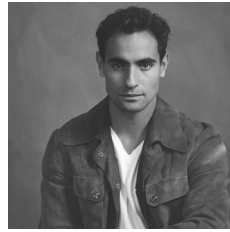
Follow us on Instagram [@aboutvintageofficial](#)



SPOTTED ON



**Helena Christensen**  
International super model  
@helenachristensen



**Jonathan Harboe**  
Actor & model  
@jonathanharboe



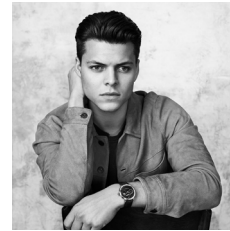
**Kristian Haagen**  
International watch expert  
@kristianhaagen



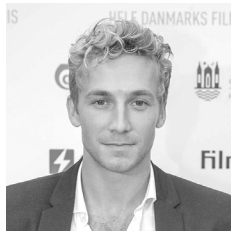
**Pilou Asbæk**  
Actor / Game of Thrones  
@pilouasbaek



**Emilie Lilja**  
Blogger & DJ  
@emilielilja



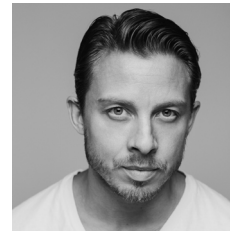
**Alex Høgh Andersen**  
Actor / Vikings  
@alexhoeghandersen



**Andreas Jessen**  
Actor / Mercur  
@andreas\_jessen



**Nikolaj Lie Kaas**  
Actor / Britannia  
@niggolaj



**Johannes Lassen**  
Actor / Gidseltagningen  
@johanneslassen

FEATURED IN

GQ Magazine  
Euroman  
@highfashionmen  
@dailywatch

Elle Denmark  
Eurowoman  
@mensfashionpost  
@mensfashion

Hypebeast  
Dansk Magazine  
@menwithclass  
@menwithstreetstyle

