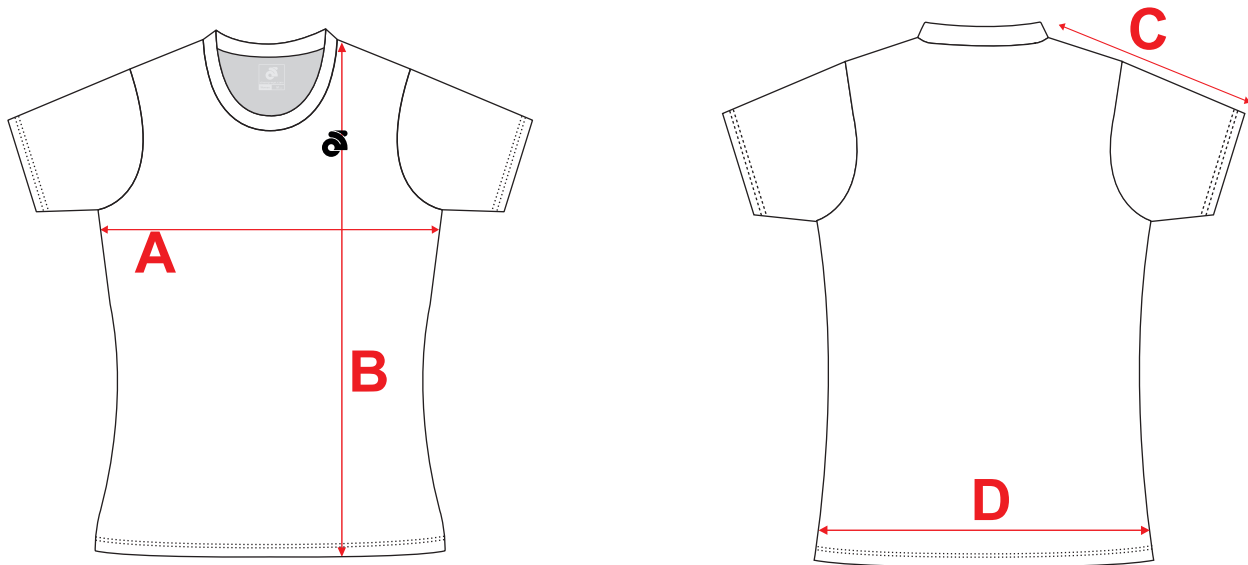


If you're unsure which size to buy, try measuring a Technical Jersey that you already own that fits you well, and compare those measurements to the size chart. Lay the Technical Jersey on a flat surface and use the above guide to measure the Technical Jersey .

Note: All measurements are approximate +/- 1/2" ... for reference only.

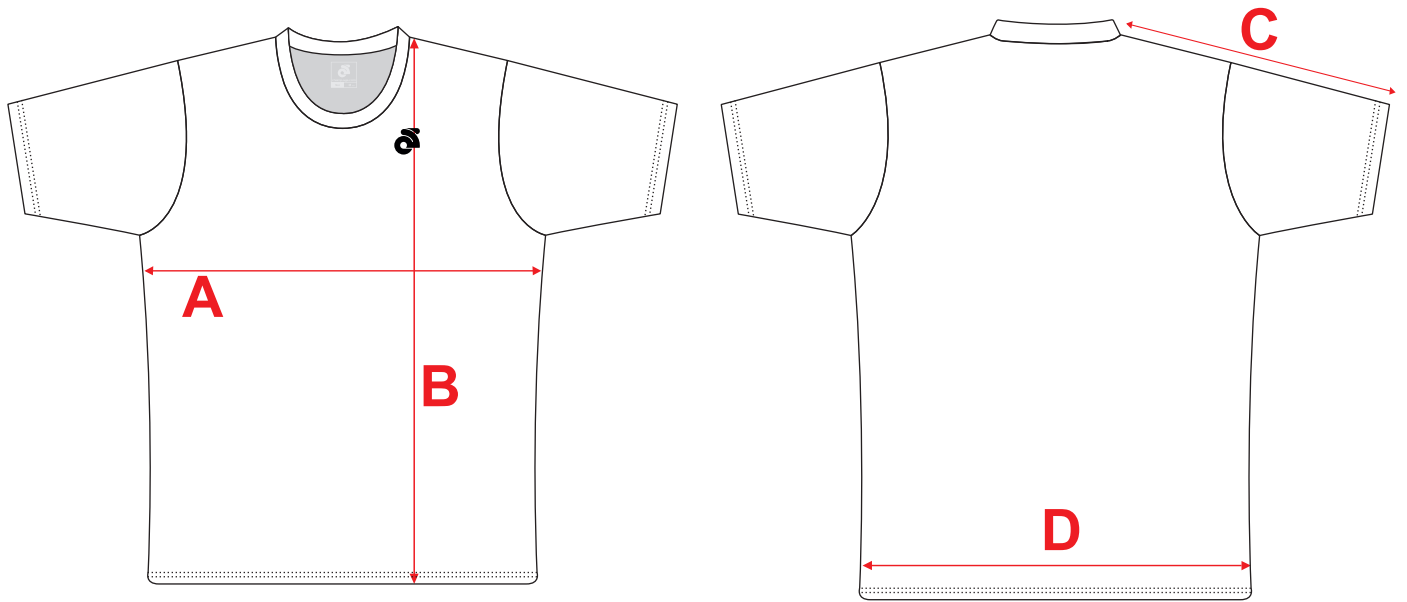
Size	A (Chest)	B (Front Length)	C (S/S Length)	D (Bottom)
XS	19"	24"	13 1/2"	18"
S	20"	25"	14"	19"
M	21"	26"	14 1/2"	20"
L	22"	27"	15"	21"
XL	23"	28"	15 1/2"	22"
2XL	24"	29"	16"	23"
3XL	25"	30"	16 1/2"	24"
4XL	26"	31"	17"	25"



If you're unsure which size to buy, try measuring a Technical Jersey that you already own that fits you well, and compare those measurements to the size chart. Lay the Technical Jersey on a flat surface and use the above guide to measure the Technical Jersey .

Note: All measurements are approximate +/- 1/2" ... for reference only.

Size	A (Chest)	B (Front Length)	C (S/S Length)	D (Bottom)
XS	17"	22"	9 1/2"	17"
S	18"	23"	10"	18"
M	19"	24"	10 1/2"	19 "
L	20"	25"	11"	20"
XL	21"	26"	11 1/2"	21"
2XL	22"	27"	12"	22"
3XL	23"	28"	12 1/2"	23"
4XL	24"	29"	13"	24"



If you're unsure which size to buy, try measuring a Technical Jersey that you already own that fits you well, and compare those measurements to the size chart. Lay the Technical Jersey on a flat surface and use the above guide to measure the Technical Jersey .

Note: All measurements are approximate +/- 1/2" ... for reference only.

Size	A (Chest)	B (Front Length)	C (S/S Length)	D (Bottom)
XS	13 1/2"	18"	7 1/2"	13"
S	14 1/2"	19"	8"	14"
M	15 1/2"	20"	8 1/2"	15"
L	16 1/2"	21"	9"	16"
XL	17 1/2"	22"	9 1/2"	17"