

PATCHWORK

PILLOW COVER



sewing pattern

pillow cover in 6 sizes, plus formula for custom sizes

PATCHWORK PILLOW COVER

a pattern by  SEWFINITY

Make a pillow cover from patchwork or your favorite fabric. Choose from 6 common sizes or design your own custom size. Features back tie enclosure, French seams, corner tapering, and variation ideas. You'll love having custom covers for all your pillows!

SUPPLIES

pillow form	14" × 14"	16" × 16"	18" × 18"	20" × 20"	24" × 24"	26" × 26"
batting	14" × 14"	16" × 16"	18" × 18"	20" × 20"	24" × 24"	26" × 26"
patchwork front or fabric	14" × 14" ½ yd or 1 FQ	16" × 16" ½ yd or 1 FQ	18" × 18" ½ yd or 1 FQ	20" × 20" ¾ yd	24" × 24" ¾ yd	26" × 26" ¾ yd
fabric - back	½ yd or 2 FQ	½ yd or 2 FQ	½ yd or 2 FQ	½ yd	¾ yd	¾ yd
fabric - lining	½ yd or 2 FQ	½ yd or 2 FQ	½ yd or 2 FQ	1 yd	1¼ yds	1¼ yds
fabric - ties	⅛ yd or 1 F8	⅛ yd or 1 F8	⅛ yd or 1 F8	⅛ yd or 1 F8	¼ yd or 1 FQ	¼ yd or 1 FQ

allow extra for directional fabric or for shrinkage if pre-washing

FQ (fat quarter) = 18" × 22" · F8 (fat eighth) = 9" × 22" · yd (yard) = 36" × at least 42" wide (selvage-to-selvage)

TOOLS

Sewing machine (with all-purpose foot, walking foot, size 90/14 Universal or Microtex/Sharp needle), iron, ironing board, fabric scissors, rotary cutter, cutting ruler, cutting mat, pen, fabric clips or pins, turning tool

© 2020 SEWFINITY. All rights reserved.
For personal use only. No part of this
product may be reproduced in any
form unless otherwise stated.

SEW003D1

Find fabric, tips & inspiration

[SEWFINITY.COM/PATCHWORK-PILLOW-COVER](https://sewfinity.com/patchwork-pillow-cover)

Share your

#PATCHWORKPILLOWCOVER

@sewfinity #sewfinity



INSTRUCTIONS

If using fabric that has not been pre-washed, the finished pillow cover may shrink slightly after laundering and may fit the pillow form differently. For quilting cotton, the shrinkage rate is about 3% and should not significantly affect the fit. However, if using other fabrics that shrink more, ensure fit by using a smaller pillow form or by pre-washing fabric before sewing.

Read all the way through the project instructions and have fun sewing!

Cutting

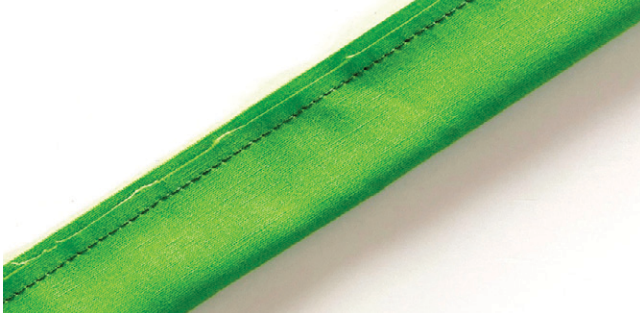
pillow size	14" x 14"	16" x 16"	18" x 18"	20" x 20"	24" x 24"	26" x 26"	custom H x W
back	½ yd or 1 FQ <i>cut into:</i>	½ yd or 1 FQ <i>cut into:</i>	½ yd or 1 FQ <i>cut into:</i>	½ yd <i>cut into:</i>	¾ yd <i>cut into:</i>	¾ yd <i>cut into:</i>	
• back-right	14" x 7½"	16" x 8½"	18" x 9½"	20" x 10½"	24" x 12½"	26" x 13½"	$H \times (W/2 + \frac{1}{2})$
• back-left	14" x 9½"	16" x 10½"	18" x 11½"	20" x 12½"	24" x 14½"	26" x 15½"	$H \times (W/2 + 2\frac{1}{2})$
lining	½ yd or 2 FQ <i>cut into:</i>	½ yd or 2 FQ <i>cut into:</i>	½ yd or 2 FQ <i>cut into:</i>	1 yd <i>cut into:</i>	1¼ yds <i>cut into:</i>	1¼ yds <i>cut into:</i>	
• front	14" x 14"	16" x 16"	18" x 18"	20" x 20"	24" x 24"	26" x 26"	$H \times W$
• back-right	14" x 7½"	16" x 8½"	18" x 9½"	20" x 10½"	24" x 12½"	26" x 13½"	$H \times (W/2 + \frac{1}{2})$
• back-left	14" x 9½"	16" x 10½"	18" x 11½"	20" x 12½"	24" x 14½"	26" x 15½"	$H \times (W/2 + 2\frac{1}{2})$
ties	⅛ yd or 1 F8 <i>cut into:</i>	⅛ yd or 1 F8 <i>cut into:</i>	⅛ yd or 1 F8 <i>cut into:</i>	⅛ yd or 1 F8 <i>cut into:</i>	¼ yd <i>cut into:</i>	¼ yd <i>cut into:</i>	
	(2) 14" x 2½"	(2) 16" x 2½"	(2) 18" x 2½"	(2) 20" x 2½"	(2) 24" x 2½"	(2) 26" x 2½"	$W \times 2\frac{1}{2}$
					or 1 FQ <i>cut into:</i>	or 1 FQ <i>cut into:</i>	
					(3) 22" x 2½" <i>sewn together, then cut into:</i>	(3) 22" x 2½" <i>sewn together, then cut into:</i>	
					(2) 24" x 2½"	(2) 26" x 2½"	

Make the Ties

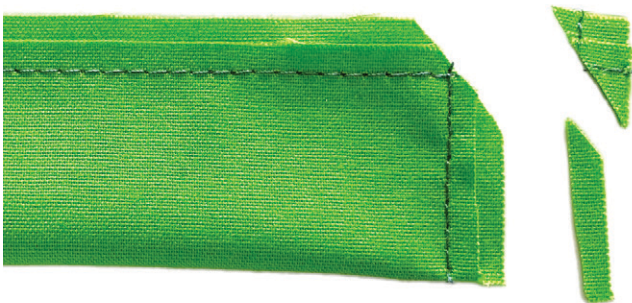
1. If making larger than a 20" pillow cover (or a long tie variation), sew together enough 2½" strips to get the two lengths needed for the ties: Cut away selvages. Sew short ends together with a ¼" seam allowance until you have one long tie strip. Press seams open. Cut the pieced strip to the two lengths needed.

2. Fold long edges of one of the tie pieces right sides together, offsetting the long edges by ⅛" so that one layer is shorter than the other. Sew together with a ¼" seam allowance, using the wider fabric edge as a guide.

Tip: This builds in a layered seam that is less bulky than if the raw edges are aligned. This is called seam grading, and is typically done by trimming seams to different widths after the seam is sewn. But this is a shortcut that builds in grading as you sew, which is nice for a seam this long!



3. Sew one of the short edges together with a ¼" seam allowance, trim corner, and grade seam allowance by trimming one side to ⅛".



4. Turn right sides out with a turning tool. Press. **Tip:** To watch a video of this step, go to sewfinity.com/patchwork-pillow-cover.

5. Repeat to make the other tie.



Make the Front

1. Baste the front patchwork, batting, and front lining pieces together and quilt as desired. Trim edges to be straight, if necessary. **Tip:** Example patchwork is made of ¾" strips of 6 colors for a 16" pillow. To get your rainbow fabric bundle, go to sewfinity.com.

Tip: To make the pillow front from non-quilted patchwork (instead of quilted): omit the batting. Layer front and front lining pieces wrong sides together and baste outer edges with a ⅛" seam allowance. The front lining piece covers and protects the exposed seams of the patchwork.

Tip: To make the front from a single fabric (instead of patchwork): omit the batting and front lining piece. Cut a piece of fabric the same size as indicated for the patchwork front.

2. Taper the corners to prevent floppy corners when the pillow form is inserted:

- On the very edge of the front piece, mark a dot from each corner that equals a fourth of the height. Example: 16" / 4" = 4". Mark a total of 8 dots.

Tip: A permanent pen works well, since the markings will be cut off.



- Place a clear cutting ruler on a corner so that you see a ½" square of fabric underneath. Mark a dot at the inner corner. Repeat for each of the corners, marking a total of 4 dots.



- On each corner, draw 2 lines that connect the 3 dots: from corner to edge, and from corner to the other edge.



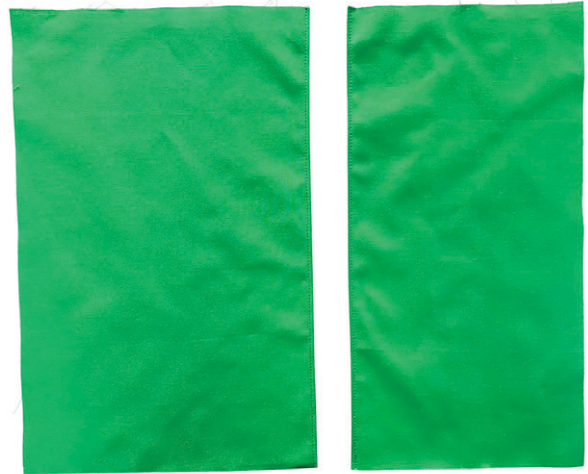
- Cut on the marked lines. Excess fabric wedges are removed, preventing floppy corners.



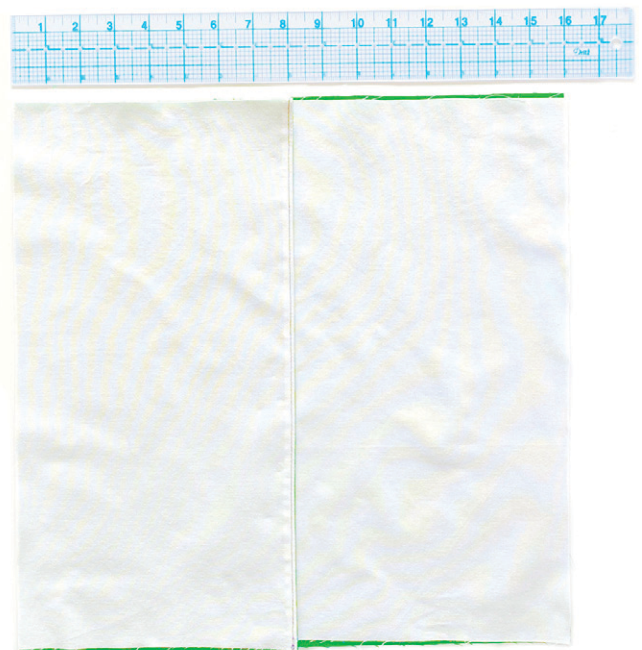
Make the Back

1. Arrange the back exterior pieces as they'll appear on the back of the pillow: the large piece on the left and the small piece on the right. Note which is the top and the bottom of each piece, which is especially important if using directional fabric.

2. Place the large back-left exterior and lining pieces right sides together. Pin and sew along the **right** edge with a $\frac{1}{4}$ " seam allowance. Turn right sides out, press, and topstitch $\frac{1}{8}$ " from the finished edge. Repeat with the remaining small back-right exterior and lining pieces, sewing along the **left** edge with a $\frac{1}{4}$ " seam allowance, turn right sides out, press, and topstitch $\frac{1}{8}$ " from the finished edge.



3. Place both back pieces wrong sides up, overlapping finished centers so the combined shape = $H \times W$. The small piece overlaps the large piece by about 2 - 2½".



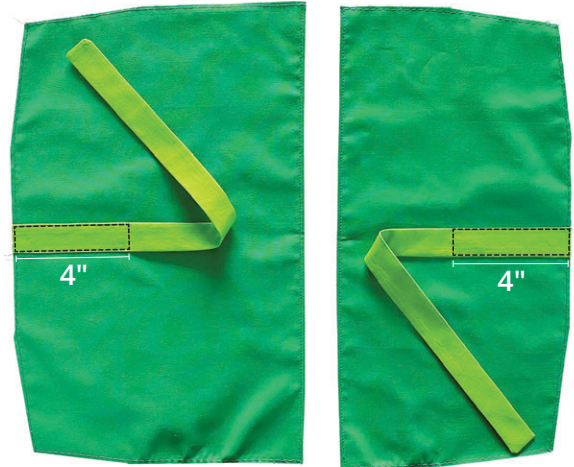
4. Layer front piece on top, wrong side up, centered. Mark and cut tapered corners on back pieces, using front piece as a template. Set front piece aside.



5. Baste outer edges of both back pieces with a 1/8" seam allowance, wrong sides together.



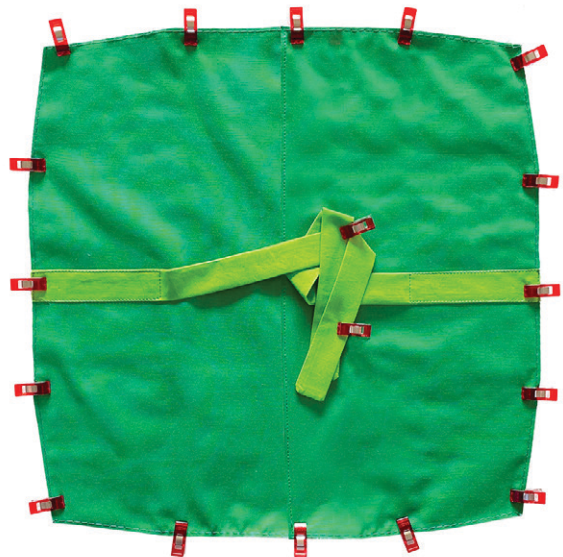
6. Place a tie on the right side of a back piece, aligning the tie's short raw edge with the center of the back piece's outer unfinished edge. Pin in place and topstitch a 4" rectangle on the outer edge of the tie, very close to the outer edges. Repeat with the other tie and back piece.



Assemble the Pillow Cover

Note: Instructions are for French seams, which completely encloses raw edges.

1. Place front piece **wrong** side up. Layer back pieces **right** sides up, aligning outer raw edges with front piece, with large back piece on the left and the small back piece on the right, overlapping the small back piece. Tuck ties inside, away from the outer edges. If necessary, slightly trim edges to be even. Clip all outer edges together.



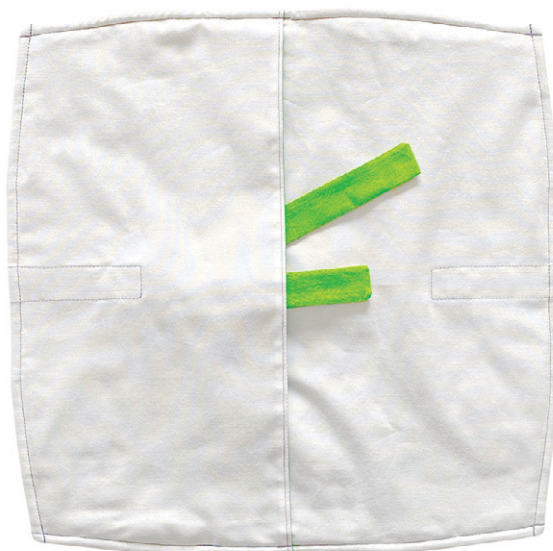
2. Sew outer edges together with a ¼" seam allowance. Backstitch at each overlapping back piece to reinforce where the back pieces' edges meet the front.



3. Trim seam allowance to ⅛", just inside the basting stitches.



4. Turn wrong side out and press. Sew all outer edges together with a ¼" seam allowance. Again, ensure ties are tucked in and backstitch at each overlapping back piece to reinforce seams.



5. Turn right side out and press. Insert pillow form. Tie ties together in a loose knot.



VARIATIONS

Long Ties

To tie a bow on the back (instead of a knot):

- Cut strips 10" longer and double the amount of fabric required.

Wide Ties

To make the ties extra wide:

- Cut strips 5" wide (instead of 2½") and double the amount of fabric required.

Hook and Loop Enclosure

To enclose the pillow back with hook and loop tape (instead of ties):

- Cut a piece of ¾"-wide sew-in hook and loop tape that equals a fourth of the height. Example: 18" / 4" = 4½". Clip and sew both tape pieces centered on the topstitched edges of the back pieces: soft tape on the lining side of the small back piece, and the scratchy tape on the exterior side of the large back piece.



Front using gradient patchwork



Front using a single fabric



Front using a half-square triangle



Back using a hook and loop closure



Back using long ties



Back using wide ties