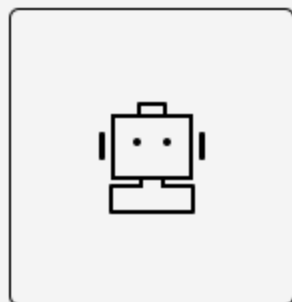


**123 GO**  
**3-IN-1 PORTABLE**  
**COFFEE BREWER**

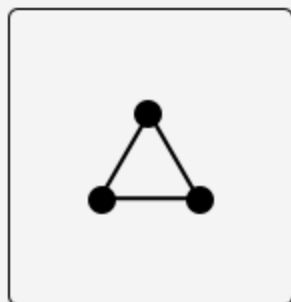


# THREE-MINUTE FOR A CUP OF POUR OVER

---



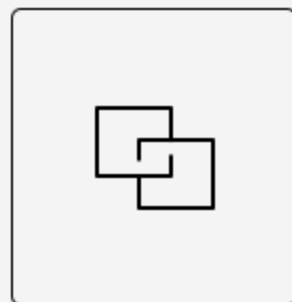
Wireless



3 in 1

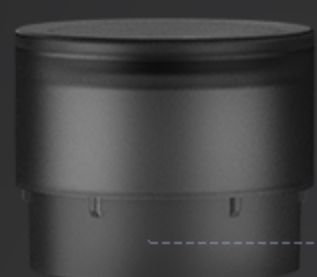


Minimal Design



Portable

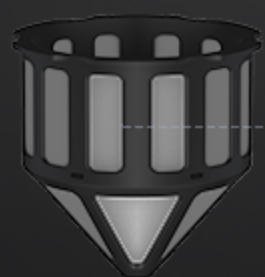
# GRINDING EXTRACTION DRINKING



Dripper



Grinder



Filter Mesh



Glass Cup

**Wireless and Convenient**  
**Brew anytime and anywhere**





# Brew coffee in 3 min

## **STEP 1**

Grind coffee beans

## **STEP 2**

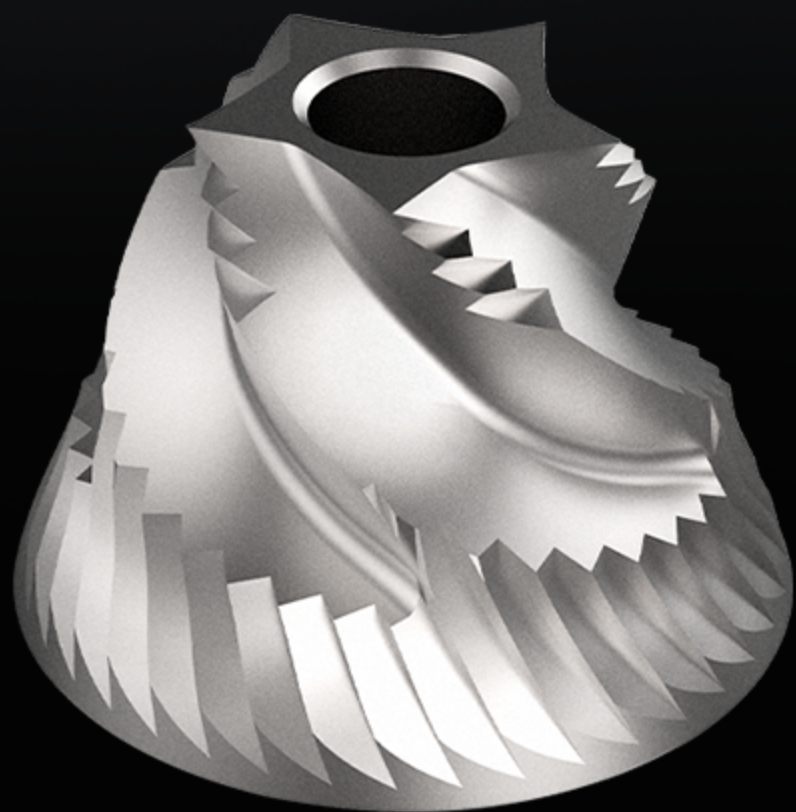
Pour hot water

## **STEP 3**

Wait for 2 min to extract automatically by the dripper. Enjoy a cup of good coffee please.

# High-precision CNC stainless steel E&B Burrs

Grind coffee beans fast and consistently





# Innovative direct operation

You can add coffee beans directly inside instead of removing the top whole parts







# Highly Consistent Grinding

Double bearings to fix the shaft high concentric structure for more consistent grinding



TIMEMORE standard



Quality assurance



# Premium Motor system

Damping structure to adjust  
coarseness precisely and clearly



# Big capacity battery for longer usage

Two 800 mAh lithium Power batteries  
30 times per grinding 15g coffee beans with full charge  
It only takes 2 to 3 hours to charge



# Point to Point Adjustment

Damping structure to adjust the grinding coarseness precisely and clearly



Turn the scale to set the clicks



Moka



Pour-over



French Press



# Smart auto-swing Tech

If beans or anything hard get stuck between burrs, it will rotate forth and back for 3 times to avoid getting stuck and protect the motor and burrs





## CONSISTENT EXTRACTION IN 2 MIN

The 13-hole structure in the dripper can extract automatically in 2 minutes



**2 MIN**  
Extraction

**13**  
Holes



# Fine Mesh Filter 300 mesh with cone-shape

Block fines effectively No need Paper filter Recyclable  
Mesh Filter may turn yellow after use which is normal  
and doesnt affect usage. It's available to order  
as a replaceable if necessary.



# High boronsilicon Heat-resistant glass

Withstand temperature difference of 150°C



## Product parameters



Name:	123 Go	Capacity:	15g
Height:	295mm	Diameter:	86mm
Battery:	3.7V 800mAh*2	Weight:	840g
Dripper:	225mL max.	Glass:	max 400mL
Voltage:	7.4V/DC	Power:	20w
Material:	PCTG, ABS, PP, glass, stainless steel		
motor:	DC7.4V, DC motor carbon -rushtype		
	80±10% RPM (when empty)		













# REMARKS:

1. Please DO NOT grind more than 60g per continuous grinding.
2. Do not grind very light and hard coffee beans in 0-2 clicks  
Otherwise, it may get the generator to start overheat protection and it will stop working for more than 10 min.
3. DO NOT wash it with water or any liquid.
4. Do not use fast charger, it's recommended to use 5V 1A to 2A adapter
5. Do not touch the dial when it's working.
6. Do not touch the burrs while it's working
7. The max capacity of the glass cup is 60 grams.  
Please DO NOT continue grinding after the glass cup is full.
8. it's normal if you find a little water drops in the dripper since we test one by one before we pack.
9. There may be some residual water in the Dripper which can't be falling down completely when it's close to the cone level.