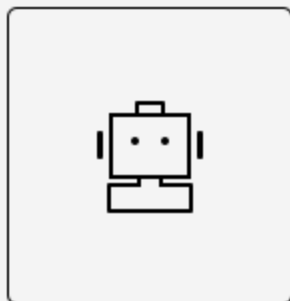


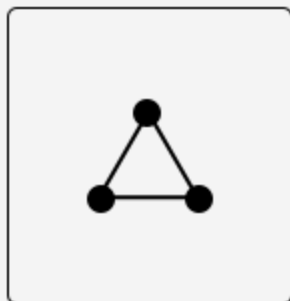
123 GO
3-IN-1 PORTABLE
COFFEE BREWER



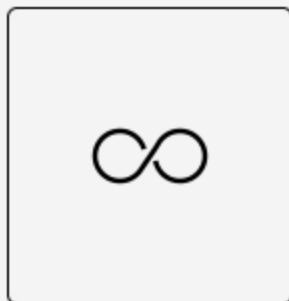
THREE-MINUTE FOR A CUP OF POUR OVER



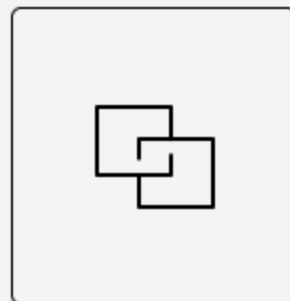
Wireless



3 in 1

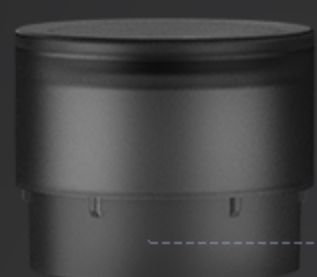


Minimal Design



Portable

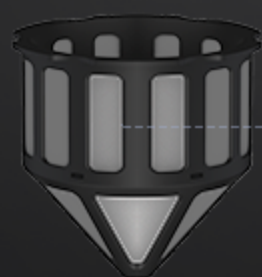
GRINDING EXTRACTION DRINKING



Dripper



Grinder



Filter Mesh



Glass Cup

Wireless and Convenient
Brew anytime and anywhere





Brew coffee in 3 min

STEP 1

Grind coffee beans

STEP 2

Pour hot water

STEP 3

Wait for 2 min to extract automatically by the dripper. Enjoy a cup of good coffee please.

High-precision CNC stainless steel E&B Burrs

Grind coffee beans fast and consistently



Innovative direct operation

You can add coffee beans directly inside instead of removing the top whole parts





Highly Consistent Grinding

Double bearings to fix the shaft high concentric structure for more consistent grinding



TIMEMORE standard



Quality assurance



Premium Motor system

Damping structure to adjust coarseness precisely and clearly



Big capacity battery for longer usage

Two 800 mAh lithium Power batteries
30 times per grinding 15g coffee beans with full charge
It only takes 2 to 3 hours to charge



Point to Point Adjustment

Damping structure to adjust the grinding coarseness precisely and clearly



Turn the scale to set the clicks



Moka



Pour-over



French Press



Smart auto-swing Tech

If beans or anything hard get stuck between burrs, it will rotate forth and back for 3 times to avoid getting stuck and protect the motor and burrs



CONSISTENT EXTRACTION IN 2 MIN

The 13-hole structure in the dripper can extract automatically in 2 minutes



2 MIN
Extraction

13
Holes

Fine Mesh Filter 300 mesh with cone-shape

Block fines effectively No need Paper filter Recyclable
Mesh Filter may turn yellow after use which is normal
and doesnt affect usage. It's available to order
as a replaceable if necessary.



High boronsilicon Heat-resistant glass

Withstand temperature difference of 150°C



Product parameters



Name: Advanced 123 Go Capacity: 15g

Height: 295mm Diameter: 86mm

Battery: 3.7V 800mAh*2 Weight: 840g

Dripper: 225mL max. Glass: max 400mL

Voltage: 7.4V/DC Power: 20w

Material: PCTG, ABS, PP, glass, stainless steel

motor: DC7.4V, DC motor carbon -rushtype

80±10% RPM (when empty)









REMARKS:

1. Please DO NOT grind more than 60g per continuous grinding.
2. Do not grind very light and hard coffee beans in 0-2 clicks
Otherwise, it may get the generator to start overheat protection and it will stop working for more than 10 min.
3. DO NOT wash it with water or any liquid.
4. Do not use fast charger, it's recommended to use 5V 1A to 2A adapter
5. Do not touch the dial when it's working.
6. Do not touch the burrs while it's working
7. The max capacity of the glass cup is 60 grams.
Please DO NOT continue grinding after the glass cup is full.
8. it's normal if you find a little water drops in the dripper since we test one by one before we pack.
9. There may be some residual water in the Dripper which can't be falling down completely when it's close to the cone level.