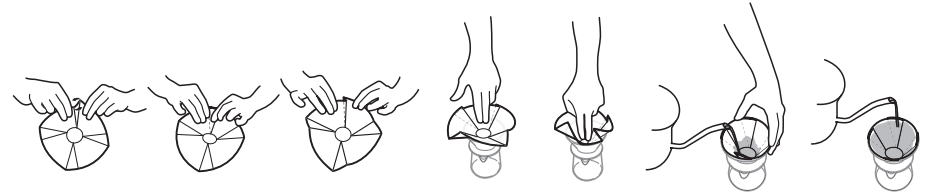


S I B A R I S I

Reinvent your recipes,
reach new cups
and rediscover your
coffees

FLAT

FAST Specialty Coffee Filter



1

Fold the 4 edges of the filter following the indentation marks on the paper. It is not necessary to keep the flat bottom shape of the filter; you just need to go over the folds.

2

Place the filter on top of the dripper and press the central part of the paper downwards.

3

Rinse the filter, starting from the centre and moving towards the outer edge by pouring hot water in a circular motion. Make sure that the entire surface of the filter is stuck to the walls of the dripper, without leaving any air channels between the filter and the filter holder.

The image shows how the filter should look before starting the infusion.





EXTRACT YOUR PASSION