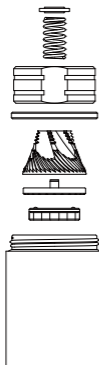
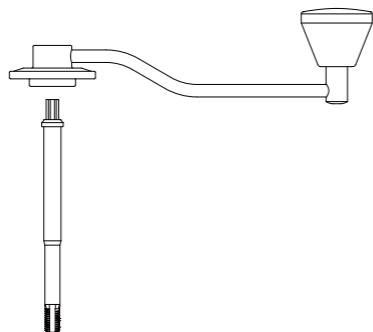


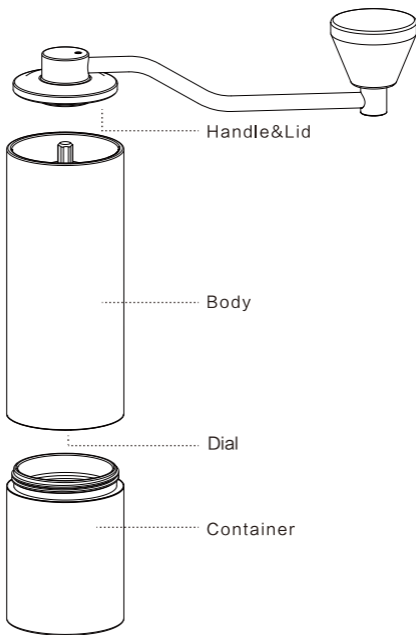


CHESTNUT
TIMEMORE CHESTNUT SLIM SERIES
COFFEE GRINDER
User Manual



- ◆ Minimal design of Body
- ◆ Patterned surface with easy hand grip
- ◆ Adjustable Coarseness Point to Point
- ◆ Unibody Metal body with High precision
- ◆ High Hardness metal Burrs

Patent: ZI.201620488714.6



BODY : Aluminum Alloy 6063

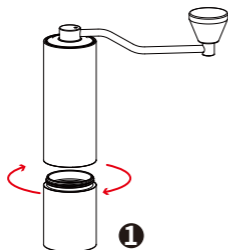
CONTAINER: Aluminum Alloy 6063

HANDLE: Austenitic stainless steel 17Cr18Ni9

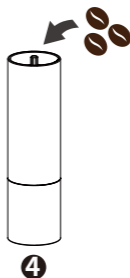
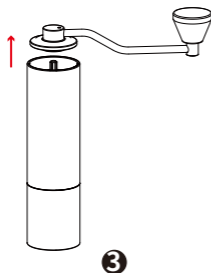
CENTRAL AXLE: Austenitic stainless steel 17Cr18Ni9

BURRS : Martensitic stainless steel 20Cr13

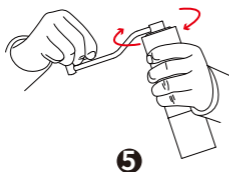
How to Grind



Remove the container and then cover the handle. Set the coarseness by turning the dial on the bottom.

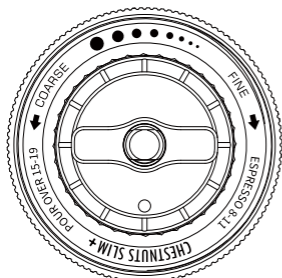


Fasten Body with the container. Then open the lid and pour coffee beans inside from the top of the grinder (less than 20g).

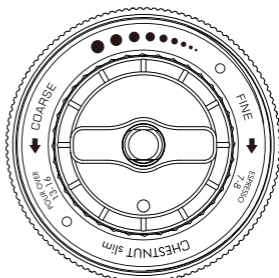


Hold the body and rotate the handle. Remove the container and pour ground coffee out when grinding is ended.

How to Adjust



Slim Plus



Slim 3

- ◆ Rotate clockwise for Finer grinding.
Rotate anti-clockwise for coarser grinding.
- ◆ Rotate clockwise to the end, this position is called **START CLICK**.
- ◆ You can refer to the start click to adjust the coarseness you want.

Slim Plus	Slim 3
ESPRESSO 8–11 Clicks	ESPRESSO 7–8 Clicks
POUR OVER 15–19 Clicks	POUR OVER 13–16 Clicks
FRENCH PRESS 20–22 Clicks	FRENCH PRESS 17–20 Clicks

- ◆ Cover the lid before you adjust coarseness.
- ◆ The table above is for your reference only.
- ◆ **DO NOT** try to grind coffee beans at the finest 0–6 clicks to protect the Burr sharpness.

Caution

- ◆ Please grind roasted coffee beans only instead of any other things.
- ◆ Please clean the device with a brush or air blower. DO NOT clean it with any liquid including water.
- ◆ Watch out for the sharp burrs which may cause cuts and scratches. Please do not touch it.
- ◆ Children are not allowed to operate the device alone.
- ◆ Store the device in a cool and dry place.
- ◆ It is NOT recommended to disassemble or replace the burr or other internal parts by yourself. If you have any special needs, please contact professionals for advice.

Troubleshooting

- ◆ Q: Why is the dial of the adjuster too loose to adjust the coarseness?
A: Because the spring or the burrs may get stuck. Try to hold the body and shake the handle slightly till you hear a click, which means the spring or burrs are loose. If not, try to unscrew the lid above the bearing and take the whole burr set out. Clean the burr sets and install them.

Please contact your seller for help if you have any question please.

CHESTNUT

泰摩栗子SLIM系列咖啡豆研磨器

TIMEMORE CHESTNUT SLIM SERIES COFFEE GRINDER

泰摩咖啡是专注于咖啡器具的原创设计品牌

以“专业+美学”的设计理念

打造有价值的咖啡器具产品

旨在让人们享受自己制作的慢生活时光

TIMEMORE Coffee specializes in
original specialty coffee equipment.

With Philosophy of Profession and Aesthetics

Create valuable coffee equipment

Let's enjoy slow living with more time

CONTACT

✉ info@timemore.com

www.timemore.com



@TIMEMORECOFFEE