

# CHESTNUT C3 ESP PRO

Sharp Burrs with Hardness HRC 55-58  
Cut Beans fast and consistently

---



# Product Features



## High Sharpness Burrs



Precise CNC cutting



## Consistent Grinding



Dual bearings to fix center shaft



## Comfortable Hand Grip



Solid Texture for tight hand grip



## Precise Coarseness



Point to point adjustment

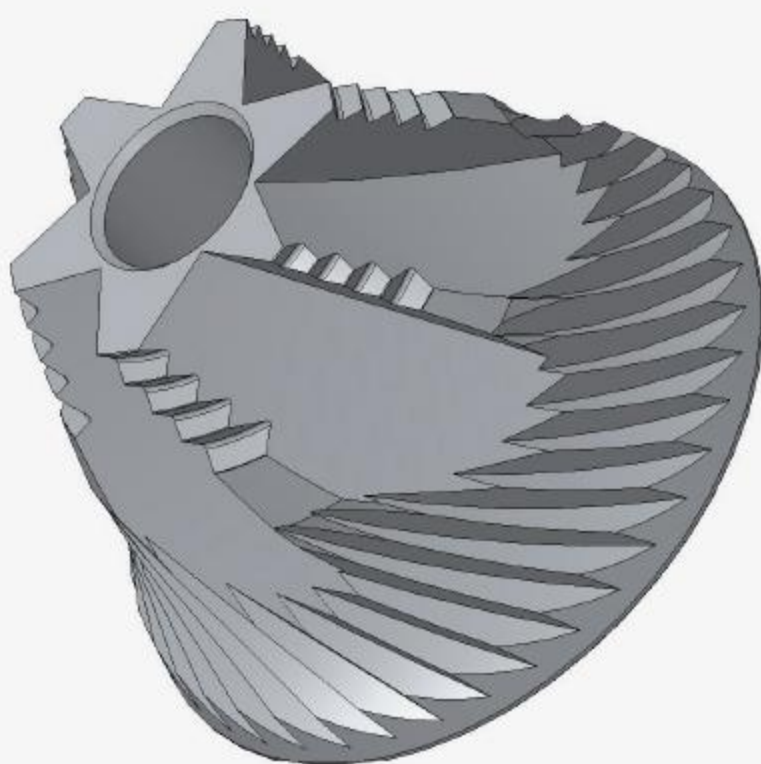
# What is Professional Manual Grinder?

---

Professional hand grinder with Premium Quality burrs and High accuracy



# Original Patented S2C 660 Burrs



With long time effort of parametric researches and adjustments, we released this new S2C 660 Burrs based on the patented philosophy of S2C (Spike To Cut) to make secondary cutting.

S2C 660 Burrs is derived from the S2C 860 on Chestnut X which received unanimous praise from coffee industry since its release.

TIMEMORE design team has reduced the size and fine-tuned the parameters to improve overall grinding effect significantly.

Patent ID: ZI.202020121549.5





**Diameter**  $\Phi$  38mm

**Material** SUS 420

**Uniformity** ★★★★★

---

## Subjective Features

Clear Figurative flavors  
High-level complexity

The descriptions are subjective and for your reference only

---

**Sweetness** 4

---

**Body** 5

---

**Balance** 3

---

**Aftertaste** 3

---

**Flavor Clarity** 5

---

**Clean** 3

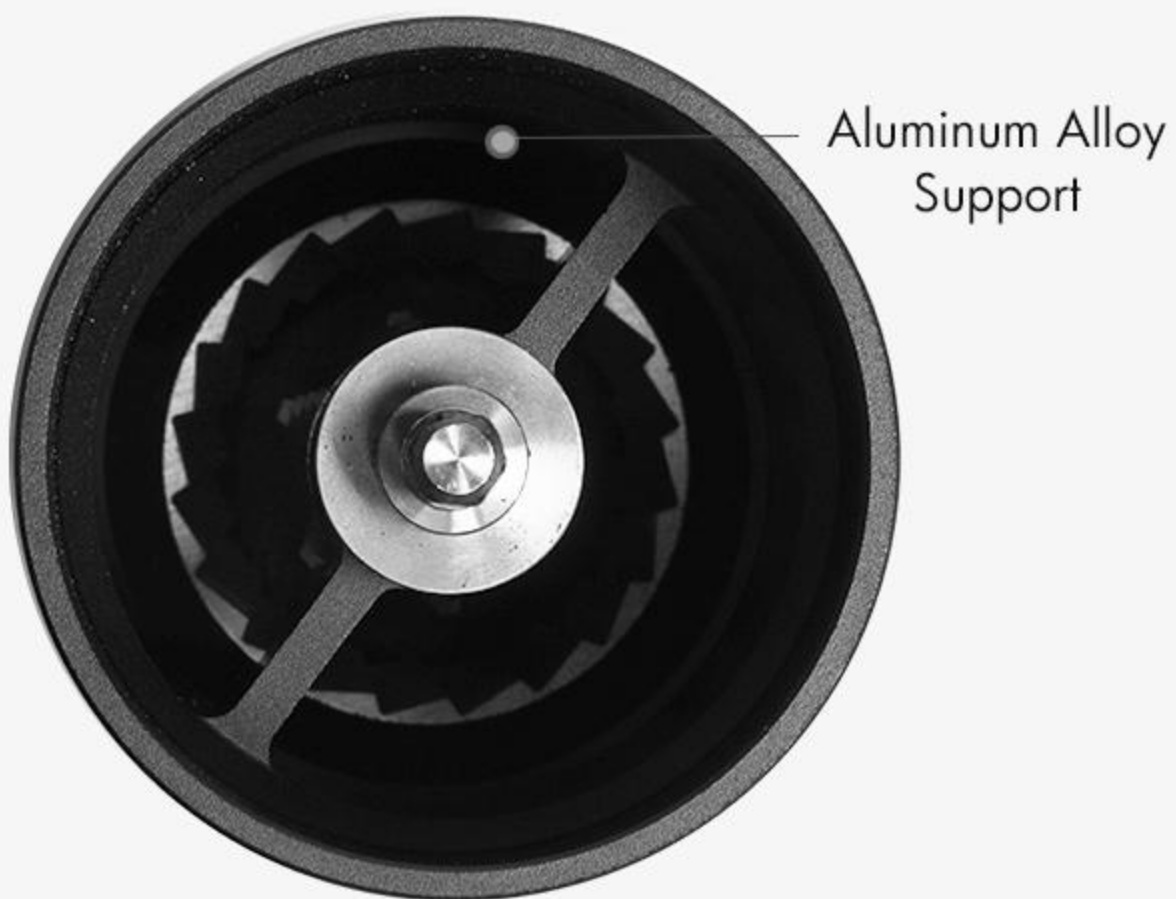
---



## Why CNC Stainless Steel Burrs?

Stainless steel burr is precision CNC cutting molding, sharp burr can cut beans fast and evenly, easy to grind. Almost all professional grinders have CNC stainless steel burrs.

## CNC Processing



Solid Aluminum Alloy supports to fix dual bearings  
Two precise bearings to fix center shaft to make sure  
high concentricity and high constancy

## Solid Texture Tight Hand Grip



It's easy for you to hold it with matte surface  
and Diameter of 52mm Slim body

## Adjustable Coarseness for Different Needs



Patented Point to Point coarseness adjustment

Adjust coarseness precisely for espresso, Moka, Pour over and Syphon, French Press, etc.



Espresso/Moka

**0.8-1.1** circles



Pour over Coffee

**1.4-2.0** circles

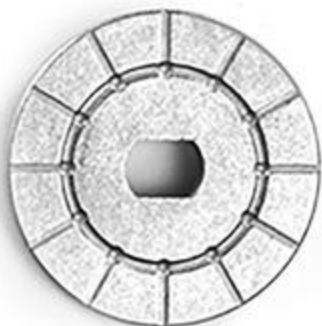


French Press

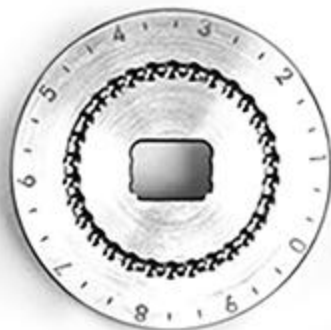
**2.0-2.3** circles



# Plate Comparison



**C3s**



**C3 ESP PRO**

---

**Adjustment:** 12 clicks per circle

**Adjustment:** 30 clicks per circle  
(Finer Resolution)

---

**Material:** SUS304

**Material:** SUS303

**Processing:** Powder Metallurgy

**Processing:** CNC (More Precise)

---

# Material

## Aluminum Alloy Bean Canister

Reduce costs with reasonable design

Allow more coffee lovers enjoying the joys of grinding coffee beans



# All-aluminum Alloy Container



# Professional and Beautiful





# Product Parameters



---

## NAME:

Chestnut C3 ESP PRO

## CAPACITY:

Max.20g

## MATERIAL:

Aluminum Alloy + Stainless Steel

## SIZE:

Body 158mmX51mm Handle: 160mm

---

**Warning:** No washing the grinder with any liquid like water. Kindly clean it with a brush

# PRECAUTIONS

1. The device is for grinding coffee beans only. DO NOT grind other material.
2. It's recommended to clean it with a brush. DO NOT wash it with water.
3. Be careful of the sharp metal burrs.
4. Keep kids from using it.
5. Keep it in a cool and dry place.
6. It's not recommended that customers disassemble or replace any part of it. If you have any special requirement, kindly operate with the advice from related professional persons.
7. Warranty is not available if you are against the above remarks
8. If you use the grinder to grind coffee beans, the device is not refundable or returnable unless there is any quality problem. Because burrs may get damaged after use.

## REMARKS:

\*We are not in charge of the consequences caused by the violation of the above precautions.

\*Once it's been used, it's not available to return or exchange except quality issues.

Because burrs are consumable, trial grind is not available.

