



Nice
Parts

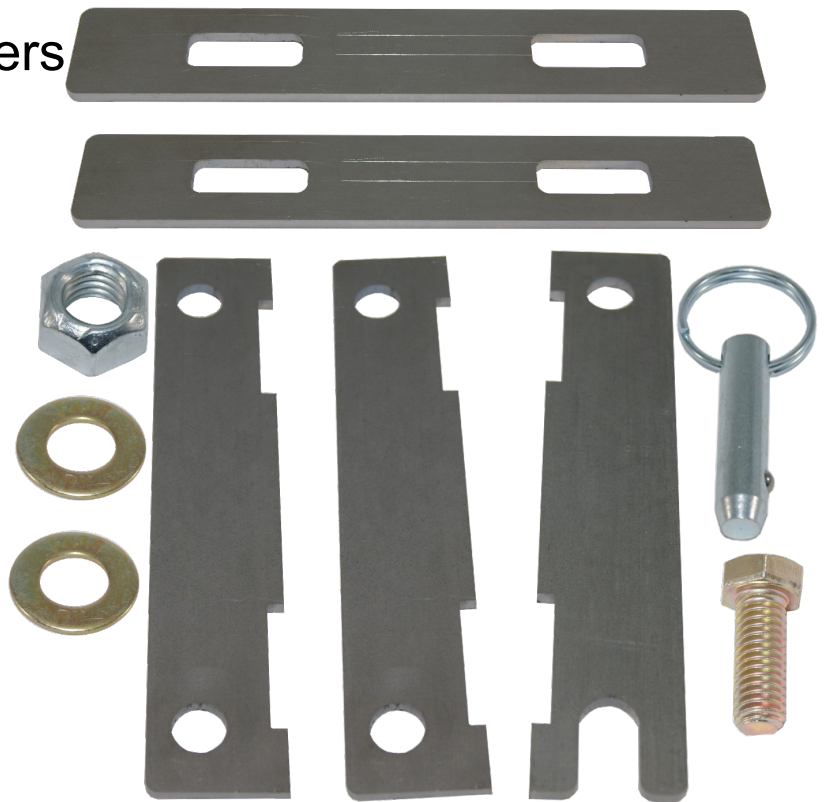
D.I.Y. Fire Extinguisher Mount

FIR0007

Assembly instructions

Kit contains:

- | | |
|------------------------------|--------------|
| 2x Base Plates | (FIR0007-03) |
| 2x Mount Side Tabs | (FIR0007-01) |
| 1x Extinguisher Side Tab | (FIR0007-02) |
| 1x 3/8"x1" Grade 8 Bolt | |
| 2x 3/8" Grade 8 Flat Washers | |
| 1x 3/8" Grade 8 Crimp Nut | |
| 1x 3/8" Pull Pin | |
| 1x 3x5" Card | |



3684 SOUTH STATE STREET
SALT LAKE CITY, UT, 84115
www.Midnight4x4.com

Ph: (801) 232-9562
info@midnight4x4.com



*Nice
Parts*

Recommended Tools

- *Welder and welding hood (we prefer tig welding)
- *Couple of clamps or Vice Grip style locking pliers
- *Grinder (for clean up)
- *Flat head screw driver (to tighten hose clamps)
- *9/16" Wrench
- *9/16" Socket and ratchet

3684 SOUTH STATE STREET
SALT LAKE CITY, UT, 84115
www.Midnight4x4.com

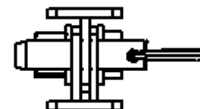
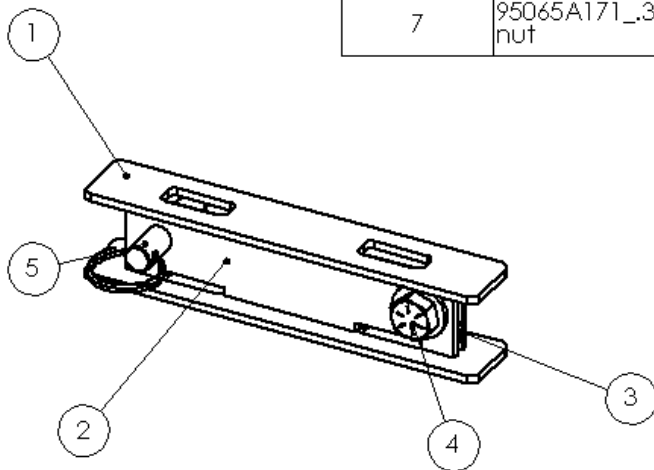
Ph: (801) 232-9562
info@midnight4x4.com



Nice Parts

THE INFORMATION CONTAINED IN THE DRAWING IS THE SOLE PROPERTY OF MIDNIGHT 4X4. ANY REPRODUCTION IN PART OR AS A WHOLE WITHOUT THE WRITTEN PERMISSION OF MIDNIGHT 4X4 IS PROHIBITED.

| ITEM NO. | PART NUMBER | DESCRIPTION | QTY. |
|----------|----------------------------|-------------------------------|------|
| 1 | FIR0007-03 | Base Plate | 2 |
| 2 | FIR0007-01 | Base Side Mount Plate | 2 |
| 3 | FIR0007-02 | Extinguisher Side Mount Plate | 1 |
| 4 | .375x1 bolt | 3/8 x 16-1 Bolt | 1 |
| 5 | .375x.875 pull pin | Pull Pin 98320A369 | 1 |
| 6 | 98023A031_.375 Flat Washer | 3/8 Grade 8 Flat Washer | 2 |
| 7 | 95065A171_.375 crimp nut | 3/8 Grade 8 Crimp Nut | 1 |



UNLESS OTHERWISE SPECIFIED
DIMENSIONS ARE IN INCHES
TOLERANCES ARE:

FRACTIONS DECIMALS ANGLES
0.00 = .050 0.000 = .005 0.0 = .010 MATERIAL

ANGLE = +/- .1 DEGREE

DO NOT SCALE DRAWING

APPROVALS

DRAWN NS DATE 03/2/2020

CHECKED

FINISH

TITLE:

DIY Fire Extinguisher Mount

SIZE DWG. NO.

A FIR0007

REV

1

SCALE: 1:2 WEIGHT:

SHEET 1 OF 1

3684 SOUTH STATE STREET
SALT LAKE CITY, UT, 84115
www.Midnight4x4.com

Ph: (801) 232-9562

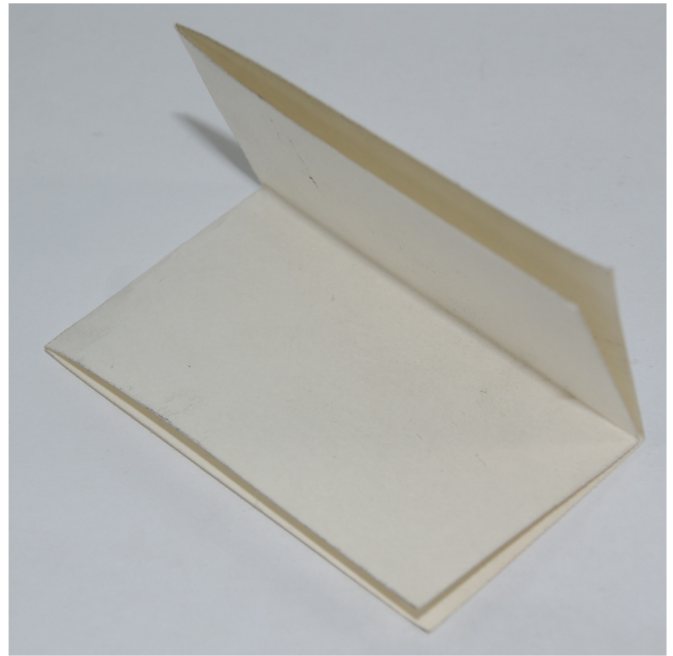
info@midnight4x4.com



*Nice
Parts*

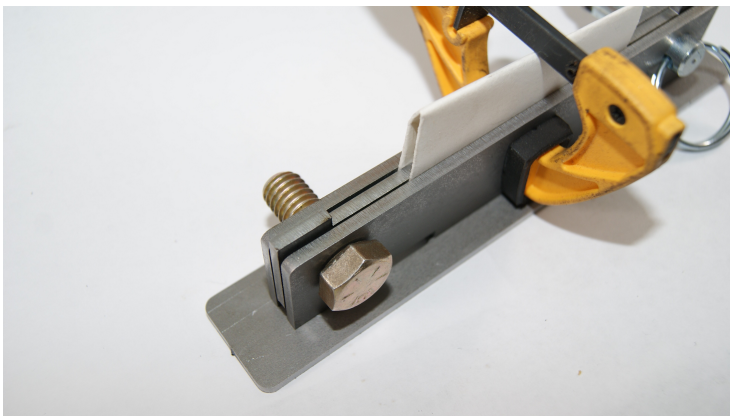
Step 1:

You are using the index card as a Spacer, fold it in half and half again.



Step 2:

Take both side plates (FIR000-01) and the extinguisher side plates (FIR0007-02). Sandwich all three plates together with the folded index card to create a gap between each plate (as pictured).



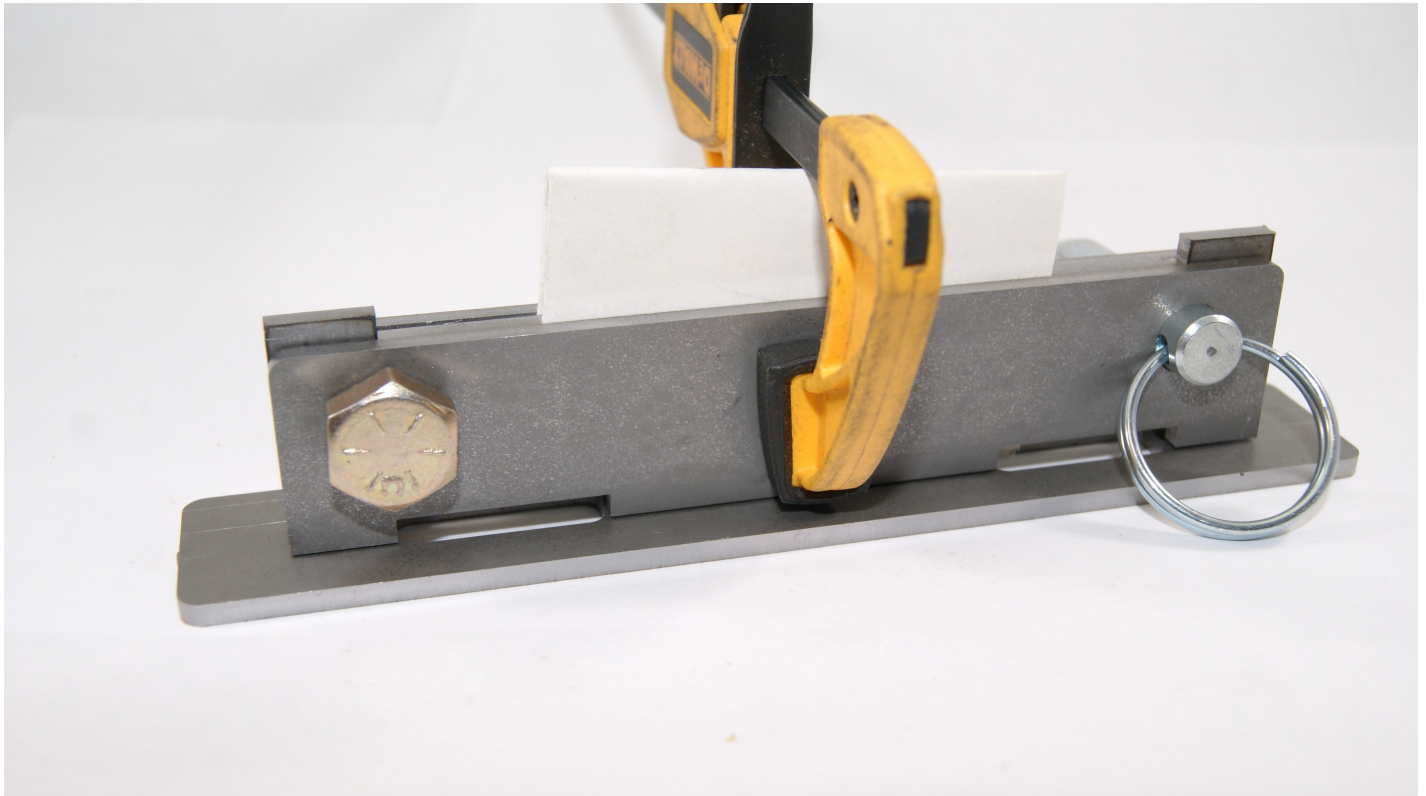
Note:
If you do not
have a spacer
It will become very
difficult to remove
the extinguisher
when finished.



*Nice
Parts*

Step 3:

While clamped together take your plate sandwich, and center it on one of the base plates (FIR0007-03), both side to side, and front to back. Tack the outer plates on the corners where they touch the base plate. Remove the extinguisher plate and index card.



Step 4:

Weld both base side mount plates to the base plate (outside only).

Note: Do Not Weld the holes up they are there to allow hose clamps to pass through.



Nice
Parts

Step 5:

Center the Extinguisher Side Mount Plate on the other Base Plate.

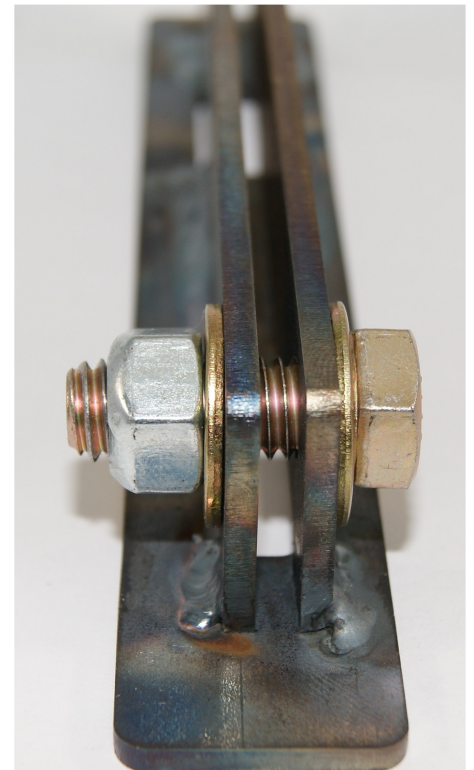
Note: Keep your weld bead small. There is not a lot of room for a large weld bead. You may need to grind your bead for clearance



Step 6:

Now that you have the extinguisher side mount welded up. Its time to assemble your extinguisher mount. You will now need to install the 3/8" bolt, it goes through the mount side tabs with a flat washer on each side. Tighten the bolt until it comes up to tabs.

Note: Do Not collapsed the tabs by over tightening.



3684 SOUTH STATE STREET
SALT LAKE CITY, UT, 84115
www.Midnight4x4.com

Ph: (801) 232-9562

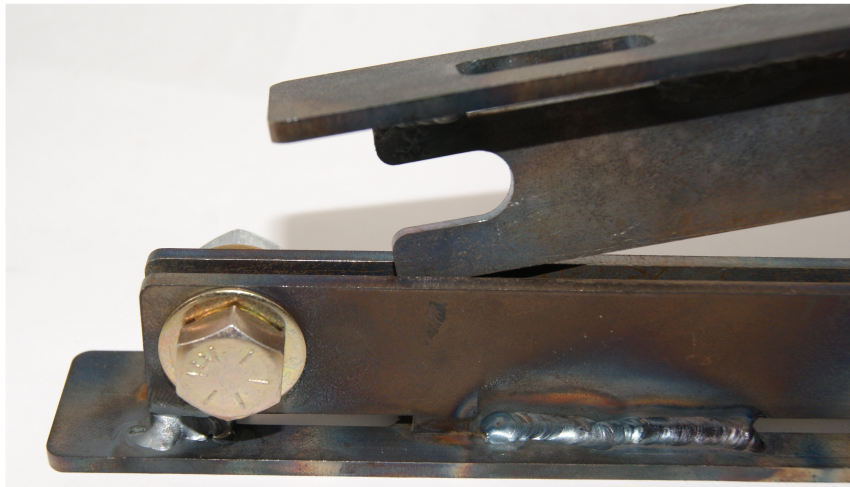
info@midnight4x4.com



*Nice
Parts*

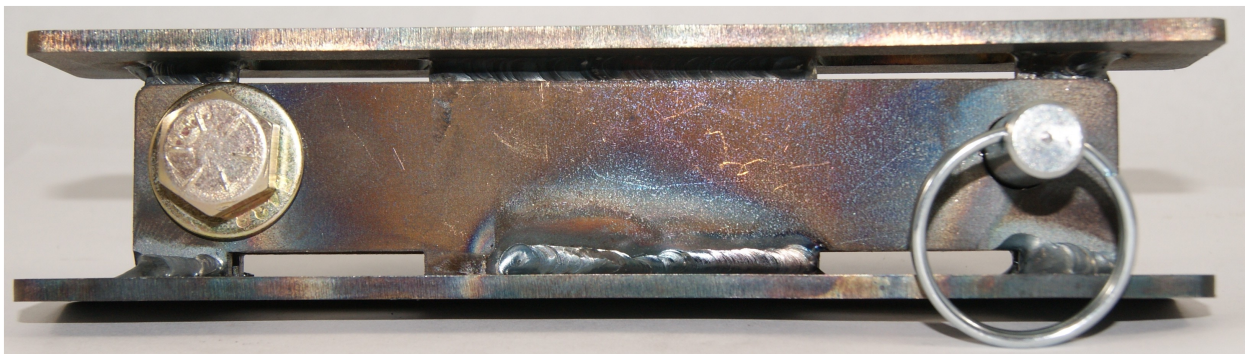
Step 7:

Now it is time to put your new fire extinguisher mount together. Slide the fire extinguisher mount side, into the base side with the slot end to the bolted end of the mount.



Step 8:

Insert the pin into the other hole



3684 SOUTH STATE STREET
SALT LAKE CITY, UT, 84115
www.Midnight4x4.com

Ph: (801) 232-9562

info@midnight4x4.com



*Nice
Parts*

Step 9:

Now you are ready to attach your fire extinguisher and install your mount.



3684 SOUTH STATE STREET
SALT LAKE CITY, UT, 84115
www.Midnight4x4.com

Ph: (801) 232-9562
info@midnight4x4.com



*Nice
Parts*

Warning

These instructions are designed as a general installation guide. Installation of many Midnight 4x4 products require specialized skills such as metal fabrication, welding and mechanical trouble shooting. If you have any questions or are unsure about how to proceed, please contact our shop at (801) 232-9562 or seek help from a competent fabricator. Using fabrication tools such as welders, torches and grinders can cause serious bodily harm and death. Please operate equipment carefully and observe proper safety procedures.

Rock crawling and off-road driving are inherently dangerous activities. Some modifications will adversely affect the on-road handling characteristics of your vehicle. All products sold by Midnight 4x4 are sold for off road use only! Any use or application is the responsibility of the purchaser and/or user. Some modifications and installation of certain aftermarket parts may under certain circumstances void your original dealer warranty, and or violate local vehicle safety and registration laws. Modification of your vehicle may create dangerous conditions, which could cause roll-overs resulting in serious bodily injury or death. Buyers and users of these products hereby expressly assume all risks associated with any such modifications and use.

3684 SOUTH STATE STREET
SALT LAKE CITY, UT, 84115
www.Midnight4x4.com

Ph: (801) 232-9562
info@midnight4x4.com