



**ENVIRONMENTAL
HEALTH TRUST**

The Public Health Impact of Wireless Radiation

Devra Davis PhD, MPH*

*Founder and President of Environmental Health Trust



ENVIRONMENTAL HEALTH TRUST



Devra Davis,
PhD, MPH
Co-founder



Tom Factor
Secretary/
Treasurer



Hugh Taylor
Chairman of
the Board
*Chair of
Obstetrics,
Gynecology
and
Reproductive
Sciences, Yale
School of
Medicine*



Frank Clegg
EHT
CEO of Canadians
for Safe
Technology
Former President
of Microsoft
Canada



Theodora Scarato
MSW
Executive Director



Hillel Z. Baldwin
Neurological
Surgeon



Paul Ben Ishai, PhD
Physics
Ariel University



Ronald B.
Herberman
MD
Director
University
Of
Pittsburgh
Cancer
Institute
Co-founder



Claudio
Fernandez
Federal
Institute of
Education,
Sci. and Tech.
Rio Grande do
Sul,
Canoas, Brazil



Anthony B. Miller
MD,
FRCP, FRCP(C),
FFPH, FACE

Devra Davis, PhD, MPH

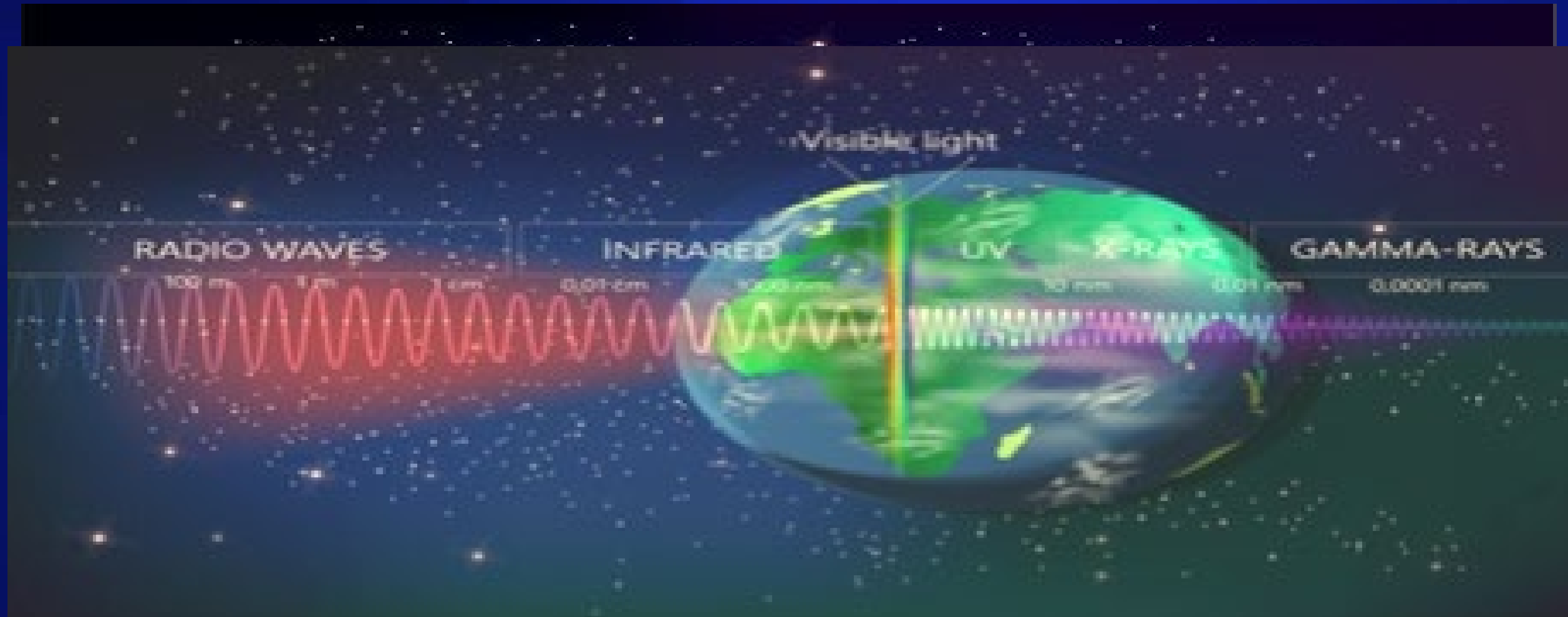
President Environmental Health Trust

- Founding Director Board on Environmental Studies and Toxicology, National Research Council, National Academy of Sciences 1983-93 (group advising bans on indoor smoking)
- Member of Team Awarded Nobel Peace Prize with Al Gore as a Lead Author of the Intergovernmental Panel on Climate Change, 2007
- Bi-partisan Senate confirmation as Presidential Appointee 1994-99
- Advisor to Centers for Disease Control, World Health Organization, World Bank, London School of Hygiene and Tropical Medicine
- More than 220 technical publications, 11 edited monographs, 3 popular books, Editor, Special Issues of *Environmental Research* on wireless radiation and health
- More than 6.3 Million YouTube Views “The truth about mobile phone and wireless radiation” at Melbourne University

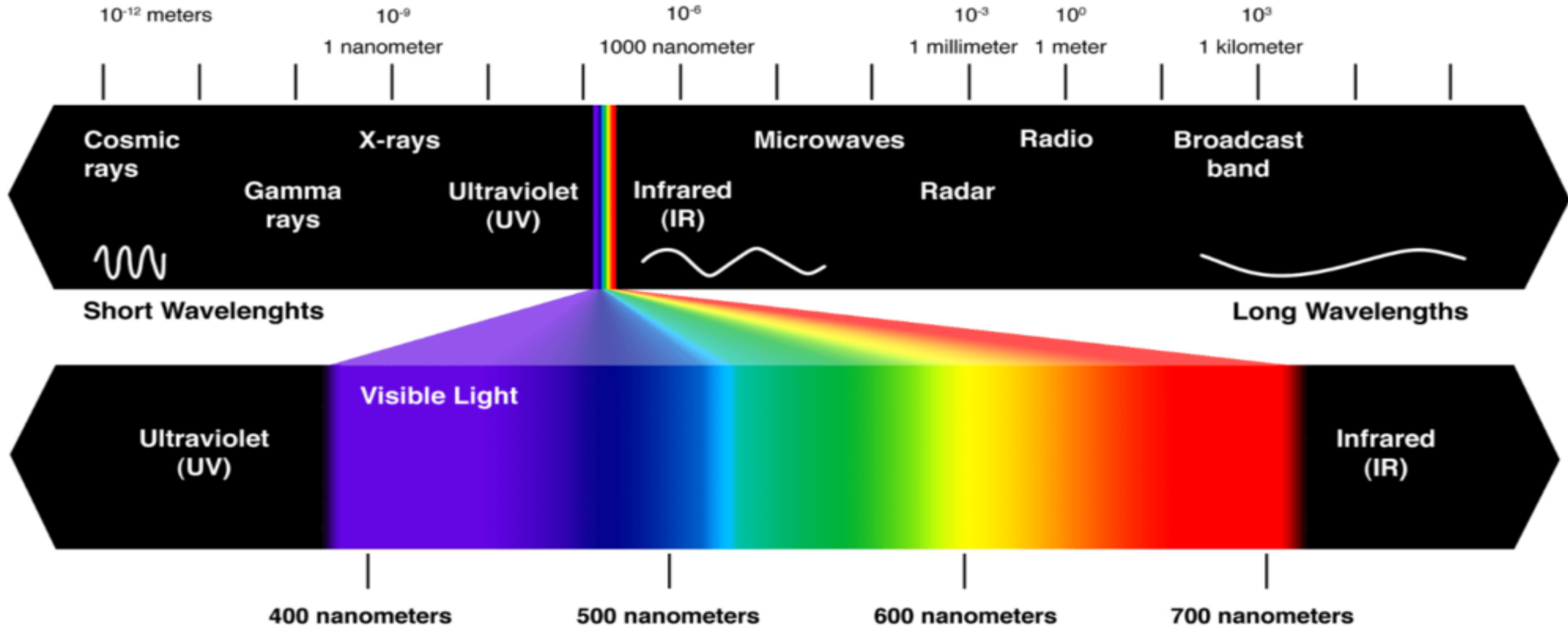
Environmental Health Trust

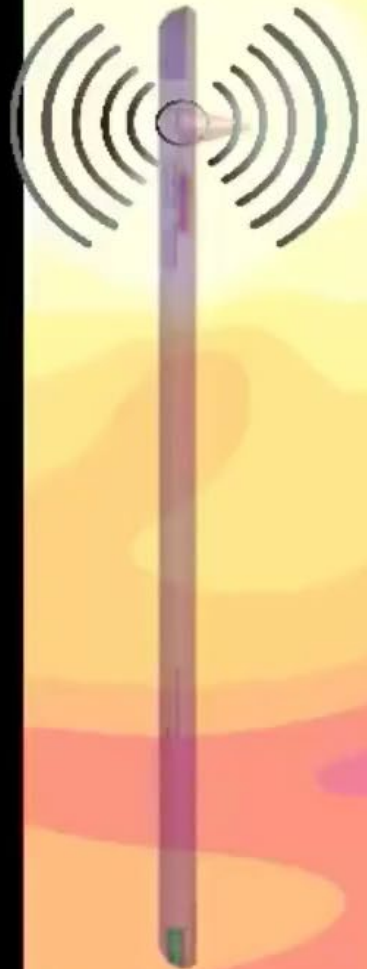
Ehtrust.org

Life Evolved as part of the electromagnetic spectrum



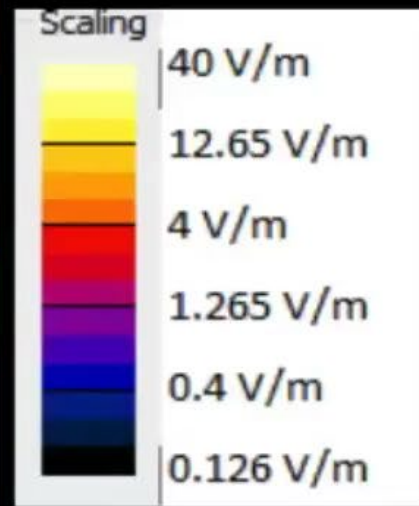
Visible Light as Part of the Electromagnetic Spectrum





Copyright Environmental Health Trust. Not to Be Used
Without Permission

Fernandez & Ferreira 2017 Environmental Health Trust



Wi-Fi Tablet Radiation Pattern into a 6 Year Old Child

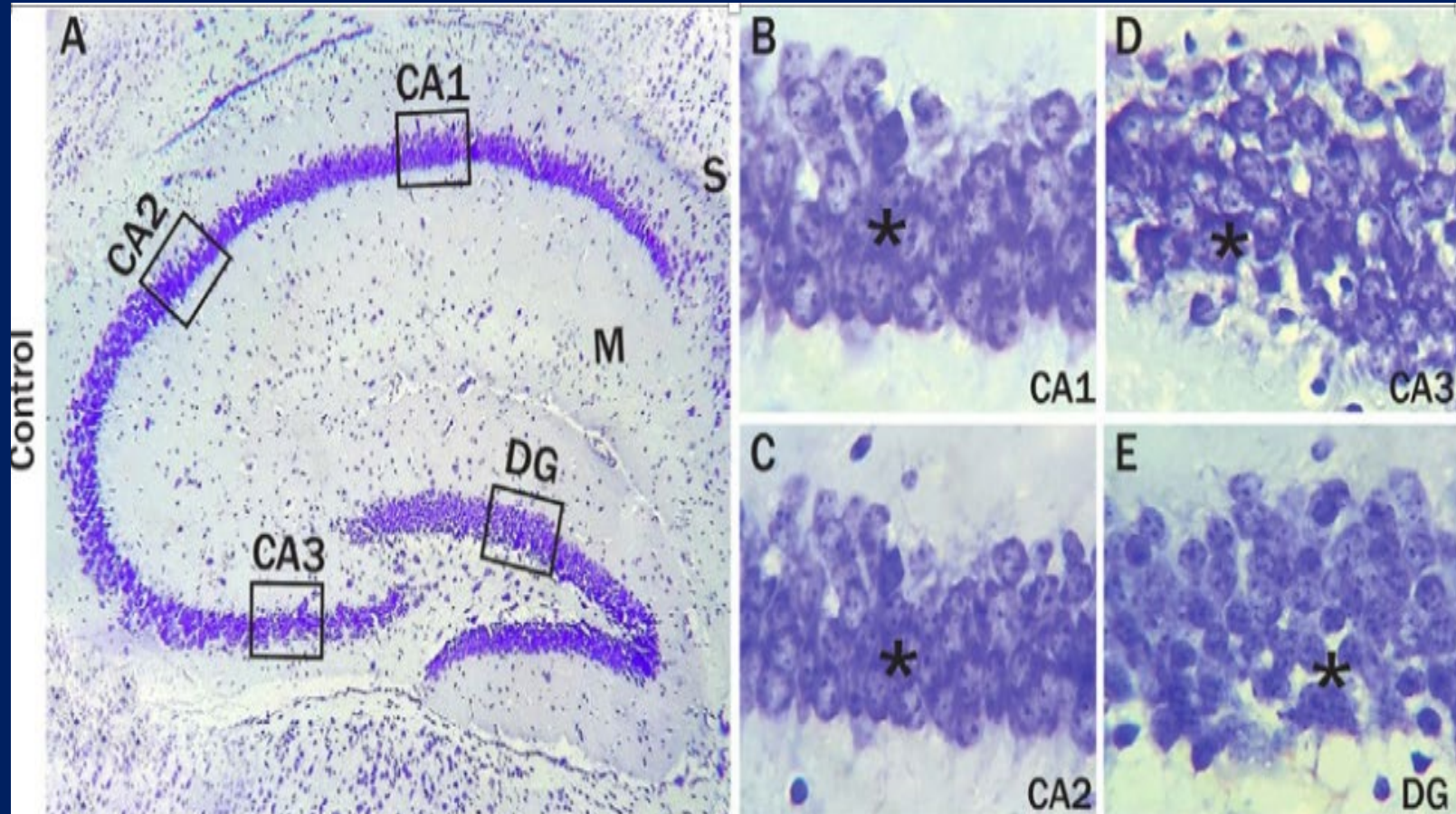
[Watch Video Online by Scientist](#)



RF Phone Radiation Exposes Male Reproductive System to Highest Exposures

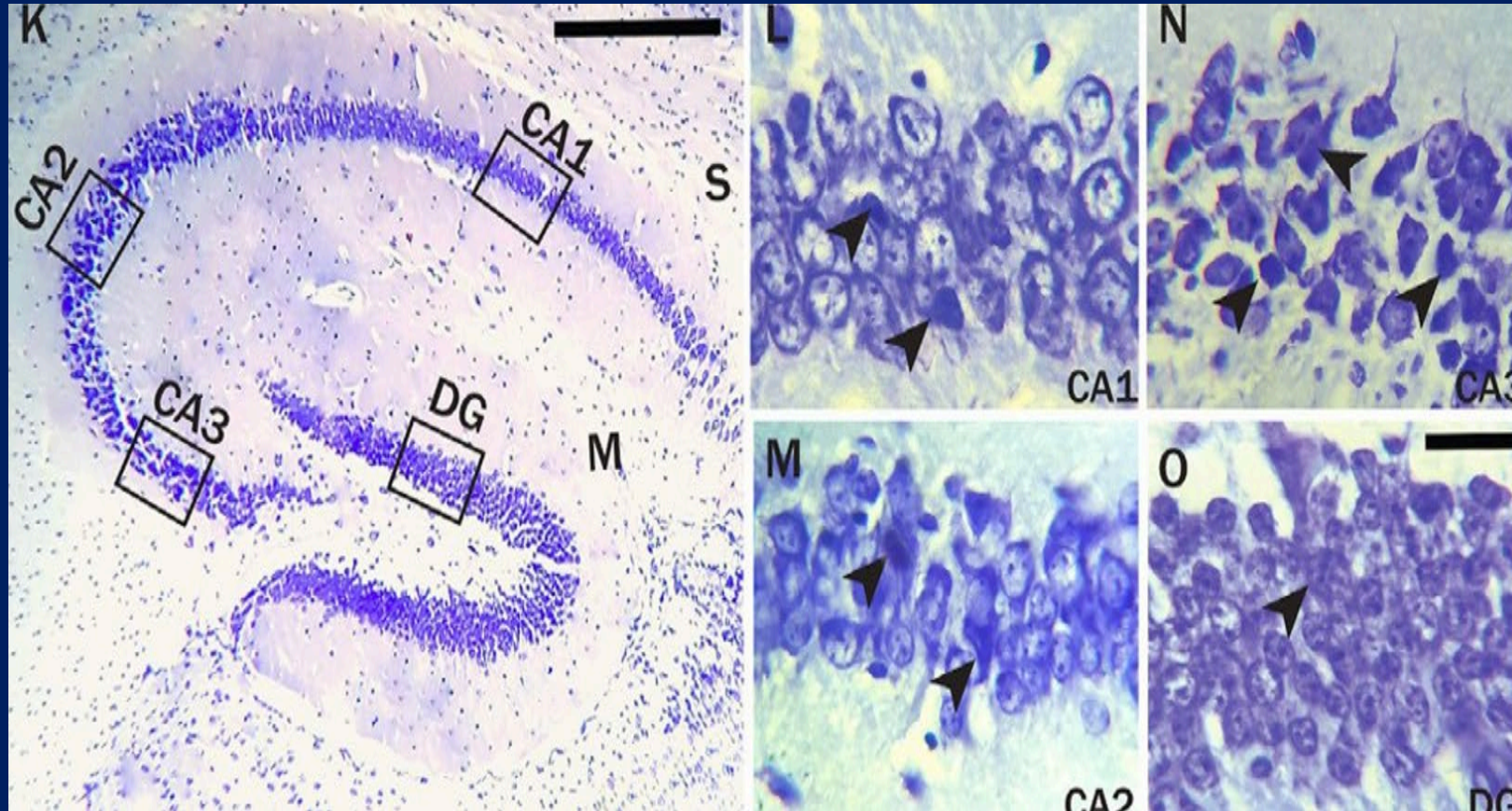
**“It’s best to keep your cell phone
as far from the testes as you can,”
- Cleveland Clinic, 2016**

CELL PHONE RADIATION AND THE HIPPOCAMPUS CONTROLS



<https://www.sciencedirect.com/science/article/pii/S1319562X21007518>

60 MINUTES OF CELL PHONE RADIATION DAMAGES MOUSE HIPPOCAMPUS



<https://www.sciencedirect.com/science/article/pii/S1319562X21007518>

RFR reduces antioxidants in persons residing close to base stations*

- Confirmed evaluated radiation from mobile phone base stations.
 - Exposed group: Within 80 meters
 - Control group: Over 300 meters

All RF levels were below India's limits (1/10 of ICNIRP)

Significant biological effects on persons living within 80 meters of base stations

- Impaired antioxidants
- Decreased glutathione concentration, catalase, superoxide dismutase
- Increase in lipid peroxidation

**

[*Zothansiama et al. 2017](#)

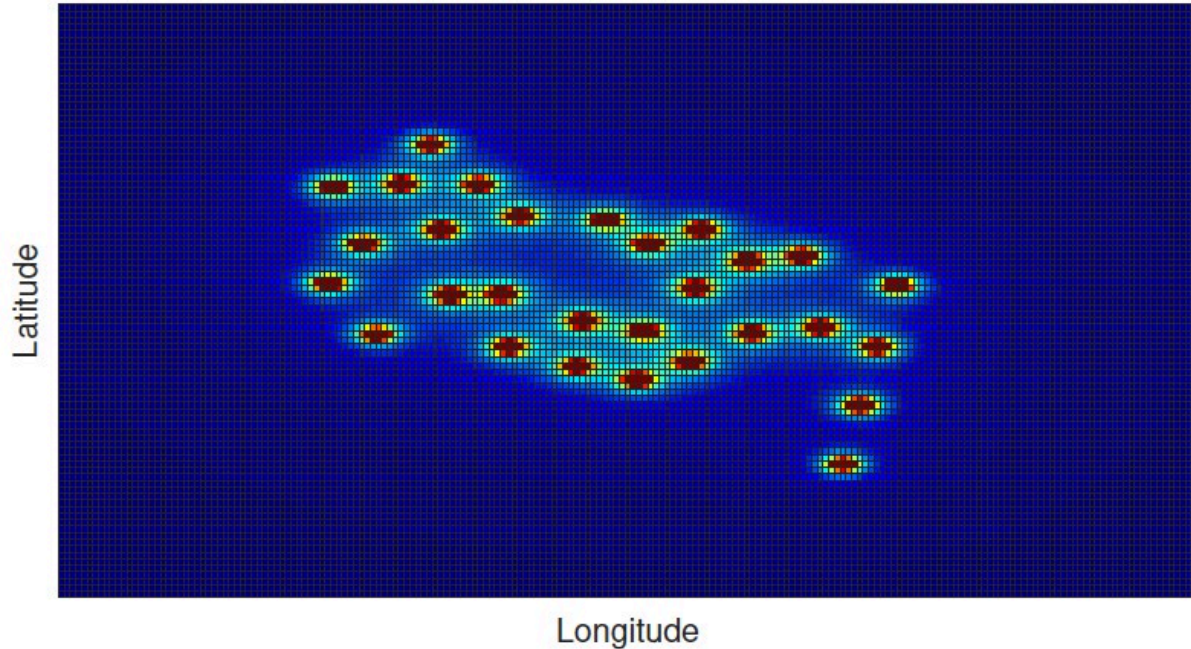


5G Increases Ambient Radiofrequency Radiation

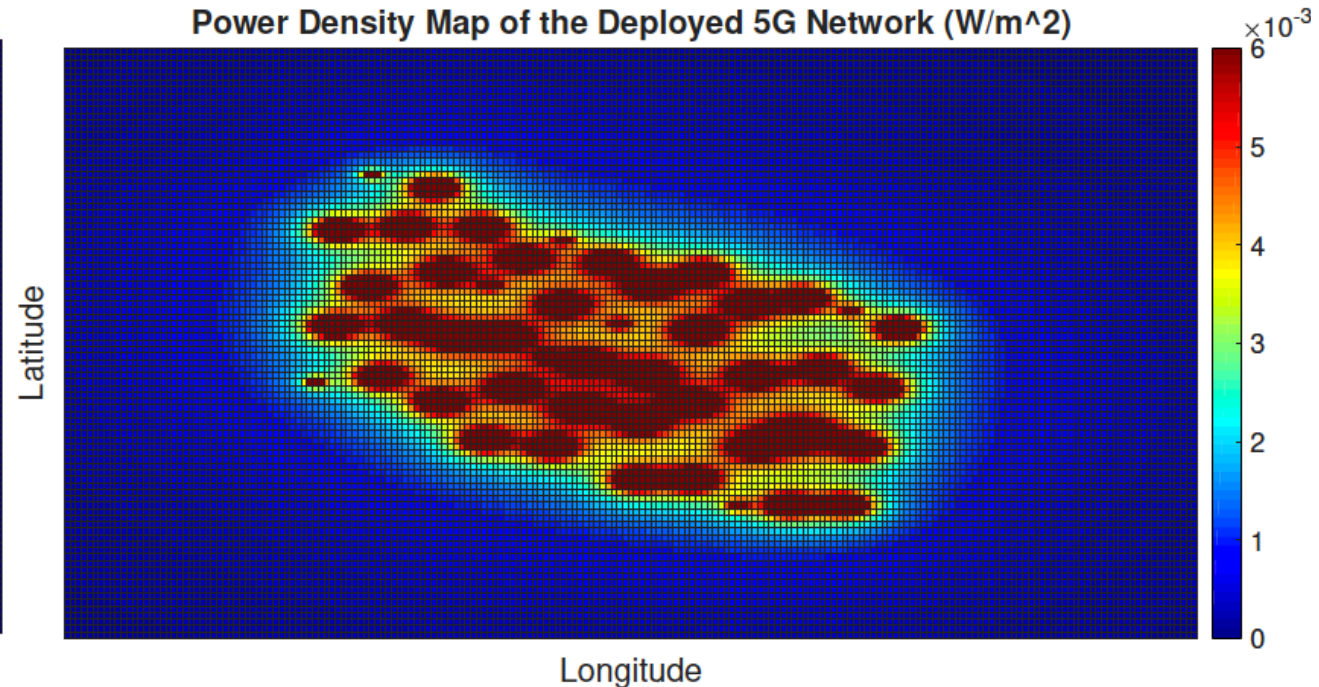
"The remarkable increase in radiation levels after integrating 5G infrastructure with the original LTE network can be easily observed through the predominance of the red color in the heat map."

"This suggests that 5G mobile networks cannot yet be classified as safe for the public, and demands serious considerations before using ...for 5G networks, given the potential harms it could afflict on the public."

Power Density Map of the Initial LTE Network (W/m²)



Power Density Map of the Deployed 5G Network (W/m²)



A. M. EL-HAJJ AND T. NAOUS, ["RADIATION ANALYSIS IN A GRADUAL 5G NETWORK DEPLOYMENT STRATEGY," 2020 IEEE 3RD 5G WORLD FORUM \(5GWF\)](#)

Secondary insurers **DO NOT COVER** health damages from wireless



- Since 1997 Lloyds of London refuses to cover health Swiss Re 2014. Electromagnetic fields classified as one of the 6 top business risks today above things like Mad Cow Disease.
- “Risk from danger linked to EMF can be classified as an emergent risk—” the same category once occupied by asbestos
- General Insurance Exclusions: Electromagnetic fields arising out of, resulting from, or contributed to by electromagnetic fields, electromagnetic radiation, electromagnetism, radio waves or noise.

Presidents and CEOs of the 7 largest American tobacco companies testify before congress in 1994



Gentlemen,

“I believe the American people deserve to know what the health effects are...We are flying blind here on health and safety”.
– Senator Richard Blumenthal, Senate Commerce Hearing 2/6/2019



2018: U.S. Sen Richard Blumenthal and U.S. Rep Anna G. Eshoo Request 5G Safety
2019: Blumenthal Questions Industry in Senate Commerce Hearing

Could the Increases in Colo-rectal Cancer in Young Adults be Tied to Cell Phone Radiation?



- 4-fold increase in rectal cancer in last decade in American young adults
- Colo-rectal cancer cells are exquisitely sensitive to RF
- Phones are 'on' and radiating into the abdomen unless turned to airplane mode or off
- Research has found that the effect of exposure to mobile phone radiation and 3Gy gamma radiation have similar impacts on treated colon tissues of rats compared to the controls

Davis et al., 2020 Increased Generational Risk of Colon and Rectal Cancer in Recent Birth Cohorts under Age 40 - the Hypothetical Role of Radiofrequency Radiation from Cell Phones published in Annals of Gastroenterology and Digestive Disorders

Jackson Hole News & Guide

Wireless radiation: Hide yo kids, hide yo wildlife

By Miranda de Moraes 7 hrs ago 0



A cell tower disguised as a Gothic bell tower stands tall behind Redeemer Lutheran Church on Willow Street. The tower is just a few hundred feet from Davey Jackson Elementary School. Health advocates and others want the Federal Communications Commission to recognize the risks to people and wildlife from wireless radiation.

"The U.S. Court of Appeals of Washington, D.C. called the FCC's policies "arbitrary and capricious" in regard to the commission's testing procedures, "particularly as they relate to children," its conclusions about "long-term exposure" and its "complete failure" to respond to the environmental damages of radio frequency."

Newsletter

COUNTRIES WORLDWIDE ARE TAKING ACTION
ON 5G

Protect yourself & your family with science you can trust and policy that puts you first... Learn more about us. www.ehtrust.org

Radiofrequency Injures Trees Around Mobile Base Stations



Radiofrequency radiation injures trees around mobile phone base stations



Cornelia Waldmann-Selsam ^a, Alfonso Balmori-de la Puente ^b, Helmut Breunig ^c, Alfonso Balmori ^{d,*}

^a Karl-May-Str. 48, 96049 Bamberg, Germany

^b C/Navarra, 1 5^B, 47007 Valladolid, Spain

^c Baumhofstr. 39, 37520 Osterode, Germany

^d Consejería de Medio Ambiente, Junta de Castilla y León, C/Rigoberto Cortezo, 14 47071 Valladolid, Spain

“Statistical analysis demonstrated that electromagnetic radiation from mobile phone masts is harmful for trees. These results are consistent with the fact that damage afflicted on trees by mobile phone towers usually start on one side, extending to the whole tree over time.”



Tree Damage Caused By
Mobile Phone Base Stations
An Observation Guide By
Helmut Breunig 2017

Norway Maple Tree July 2015
Radiofrequency Radiation
Measurements

2,100 $\mu\text{W}/\text{m}^2$ on side facing
mast.

290 $\mu\text{W}/\text{m}^2$ on side opposite
mast

Following slides for discussion etc





“Statistical analysis demonstrated that electromagnetic radiation from mobile phone masts is harmful for trees. ...damage afflicted on trees by mobile phone towers usually start on one side, extending to the whole tree over time.”

Norway Maple Tree July 2015
Radiofrequency Radiation Measurements
2,100 $\mu\text{W}/\text{m}^2$ on side facing mast.
290 $\mu\text{W}/\text{m}^2$ on side opposite mast

Cornelia Waldmann-Selsam, Alfonso Balmori-de la Puente, Helmut Breunig, Alfonso Balmori, Radiofrequency radiation injures trees around mobile phone base stations, Science of The Total Environment,

Radiofrequency Radiation Radiation Affects Trees: observational study, 2017



Breunig, Helmut. [“Tree Damage Caused By Mobile Phone Base Stations An Observation Guide.”](#) (2017).

*Norway maple tree, August 2012
Badly damaged tree crown on the side
facing an RF transmitter*



Radiofrequency radiation injures trees around mobile phone base stations



Cornelia Waldmann-Selsam ^a, Alfonso Balmori-de la Puente ^b, Helmut Breunig ^c, Alfonso Balmori ^{d,*}



Section of red oak tree, August 2013



Section of red oak tree, August 2015

Active Denial System Crowd Control Weapon



<https://www.youtube.com/watch?v=u9p5naCkz2w>



Images from videos on Active Denial System [and History Channel Report](#) on US Government Active Denial System
[US Department of Defense Non-Lethal Weapons Program FAQs](#)
[A Narrative Summary and Independent Assessment of the Active Denial System](#) The Human Effects Advisory Panel