

Joker MACHINE

1.75" VENT PORT INSTRUCTIONS

Part No. 65-200

For technical support contact Joker Machine

2245 Kiowa Blvd N. Ste. 100, Lake Havasu City, AZ 86403

PHONE: 909-596-9690, FAX: 909-596-9693

sales@jokermachine.com, www.jokermachine.com

Installation

Tools Needed

- 2.5mm Allen wrench
- 1.75 Carbide tipped hole saw

Comes with M4 x 12mm long hardware for 1/8" sheet metal installations. Increase screw size for thicker material.

1. Choose location for 1.75" vent hole.
 - Outside diameter of vent port is 2.83"
2. Use Outer Vent Port as hole template for 1.75" vent hole and (3x) M4 screw holes.

NOTE: M4 screw clearance hole sizes

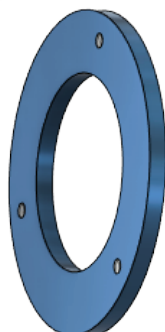
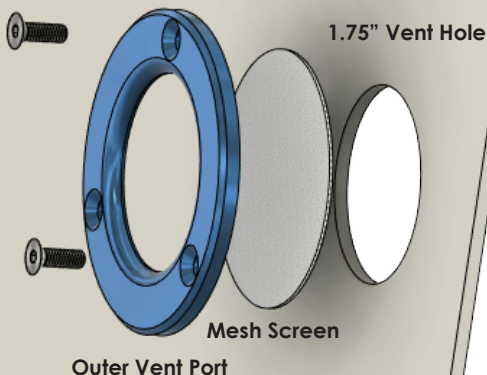
- Close fit 4.3mm (0.1693"), Medium fit 4.5mm (0.1772"), Free fit 4.8mm (0.1890")

NOTE: 1.75" vent hole

- Use 1.75" carbide tipped hole saw drill bit for sheet metal. They're usually inexpensive and make a clean hole in most metals.

3. Assemble using blue Loctite on threads.
 - If having trouble lining up mesh screen, apply small dab of super glue to mesh and bond it to outer vent port plate. Works great and super glue will be invisible.

(3x) M4 x 0.7 x 12mm
Flat Head Screws



Inner Vent Port