

GAS CAN MOUNT INSTRUCTIONS

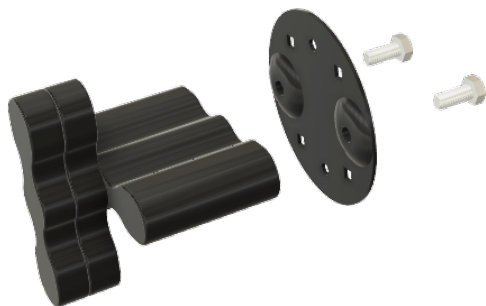
For technical support contact Joker Machine

2245 Kiowa Blvd N. Ste. 100, Lake Havasu City, AZ 86403
PHONE: 909-596-9690, FAX: 909-596-9693
sales@jokermachine.com, www.jokermachine.com

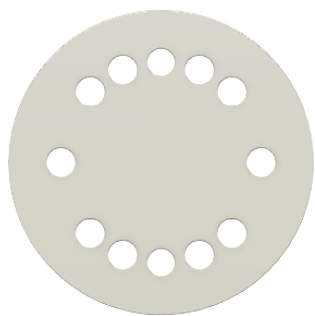
TOOLS NEEDED

- 3/16" Hex Key / Driver
- 5mm Hex Key / Driver
- Medium Strength Thread Locker or anti-seize.

Remove back plate and screws from Rotopax Lock



6 different mounting options available for gas can.



Assemble bracket to roll cage.
Use blue Loctite or anti-seize
on hardware.

