



CIRCLE CRAFT

CIRCLE CRAFT COOPERATIVE ASSOCIATION



May News & Updates

IN THE STORE

2023 April Results

Congratulations Judy and team for all your hard work on a daily basis! This month with an increase of 24% over last year!

April Sales: \$85,927

Target: \$75,000

To compare:

March 2022: \$69,300

STORE UPDATES

Consignor Member My Portal is now live and ready to use.

Log into your account for access to all your sales and inventory information.

Reminder end of month reports will no longer be sent out as Members can now access the information online.

Circle Craft Member Education Centre (CCMEC) is now launched for all your Member training needs.

Reminder: Black out period in place for Member drop offs and withdrawals May 1-8. Appointments can be made anytime by emailing Lucy, [Inventory Circle Craft](#) or calling the store.



This month we celebrate Jackie Read who has been with Circle Craft for 30 years!

Jackie started with Circle Craft on May 12th, 1993. She is a valued member of the Circle Craft team who continues to bring her positive energy every week. Make sure to thank her for her work, her commitment and dedication to Circle Craft for the last 3 decades. We are lucky and immensely grateful to have her on the team.

MEMBER IN-STORE EVENTS

SUMMER POP UPS

Still a few weekends to fill. Book your pop up this summer on Granville Island!

July 27-30

Aug 3-6

Aug 17-20

Aug 31-Sep 3

**a minimum of 2 consecutive days must be booked for the event*

MEMBER UPDATES

Jenny Hildebrand has made the difficult decision to leave the cooperative. We thank her for her commitment to Circle Craft over the years and wish her all the best down the road.

MEMBER SPOTLIGHT

Jeremy Dane Morris

Jeremy Dane Studio Glass

Member Since: 2007

Medium: Glass

Were you 'crafty' as a kid?

Yes, as a child I loved putting together model ships and airplanes, doing 'paint-by-numbers' pictures, doodling and drawing.

What's been the most interesting piece of work or your biggest accomplishment in your career to date?

I'm pretty happy with my latest series of pieces using 'pot melt' focal points in sushi platters and bowls. The designs achieved



Is there a top tip you could give to our 'crafters of the future' on how to start, run and grow a business?

Be persistent; find a niche for your

with the pot melt process are for the most part random and thus an exciting contrast to the structured background of the piece.

Who are a few artists/makers that you admire and inspire you?

Klaus Moje, Giles Bettison from down under. Nathan Sandberg and Lisa Samphire more locally.

What's been one of the hardest challenges that's come with running your own business?

Finding a good balance between spending time on work that sells and work that is more experimental / non-commercial.

work, but never stop trying new designs, methods, approaches or materials, otherwise your work can become stale.

What is your favourite holiday destination? and why?

It's a toss-up; Japan and Bali, Indonesia. Both have beautiful landscapes, arts and crafts traditions, food, culture and people.

What brings you joy?

Diving the world's coral reefs.
Sharing a good meal with friends.
Taking a one-of-a-kind piece of glass work out of the kiln and seeing it for the first time as a finished piece.

We want to know more about YOU!

Click here to fill out the member questionnaire if you haven't already.

SELECTIONS COMMITTEE

Congratulations and welcome to the Circle Craft family! Here is the list of selected artists invited to be a Member of the Circle Craft Cooperative:

Anson Hardjojo
Claudine Gévry
Cristy Johnson
Dani Cindrich
Jane McDougall
Jorge Izaza
Keith Kerrigan
Meira Mathison
Valeriia Voitushenko
Sunny Baycroft
Soma Mo
Tracy Myerson

MARKET COMMITTEE

Spots are filling quickly for the Circle Craft 2023 market.

Get those applications in for this high volume show and take advantage of your **member discounted rate of over 40% off!**

[Apply Now](#)

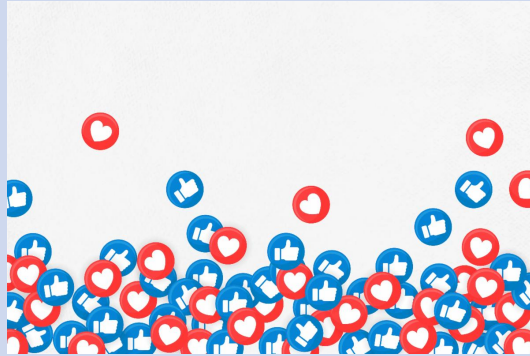
Message from the Board

I would like to express my gratitude for each and every one of you that took the time out of your busy schedules to attend our AGM. Your active participation and engagement is appreciated and vital to the continued success of our cooperative and we are grateful for your support.

I would also like to extend a special appreciation to the members who have stepped forward to join the Circle Craft Board of Directors; **Effie Baker, Elaine Brewer-White, Adea Chung and Martha Casey-Knight**. Your willingness to serve and lead is truly commendable, we are excited to have your talents and expertise on our team.

Together, we can continue to build a stronger and more vibrant cooperative. Thank you, members, once again for your dedication and commitment to our shared goals.

Cameron Dougherty
Board President



If there is any news you would like to share, please send it to nicole@circlecraft.net



www.circlecraft.net



Circle Craft Co-operative of BC | 1-1666 Johnston Street, Granville Island, Vancouver, V6H3S2
Canada

[Unsubscribe info@circlecraft.net](mailto:info@circlecraft.net)

[Update Profile](#) | [Constant Contact Data](#)
[Notice](#)

Sent by byanna@circlecraft.net