

Customer Service Information



Savio Engineering, Inc.
Albuquerque, New Mexico USA
<http://www.savio.cc> • email: support@savio.cc

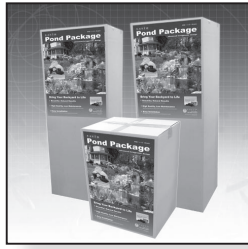
Innovative, precision engineered solutions
Advanced water gardening products for healthy, clean living ponds.



Skimmerfilters®



Livingponds® Filters



Pond Packages™



Uvinex™ system



Water Master Pumps™



Waterfall Well™



Springflo Filter Media™



FilterWeirs™



Radiance™ Lighting



Black Foam



Pond Free™ Packages

SAVIO Mechanical Water Leveler

For use with the Savio Waterfall Well™ (K6001)



07-SV-091

Read entire instructions prior to assembly and operation.

K6002

OPERATING MANUAL

Operating Capacities

The Savio Mechanical Water Leveler Kit is specifically designed to operate with the Savio Waterfall Well™. This kit will provide a regulated flow of water to maintain optimal water level and can be connected to copper, plastic or iron water supply lines up to 1" in diameter.

COMPONENTS

- Mini-Float Valve • Self Tapping Hose Kit



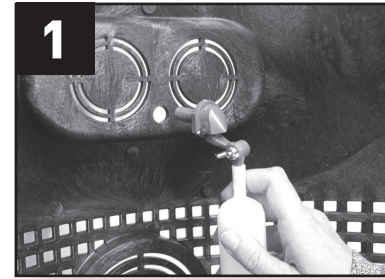
Self Tapping Hose Kit (MM43265)

Float Valve (KVMA252)

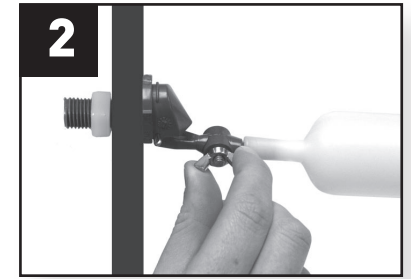
TOOLS NEEDED

- Phillips Screwdriver • Crescent Wrench or Pliers

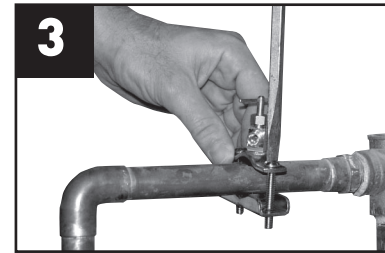
Assembly and Installation



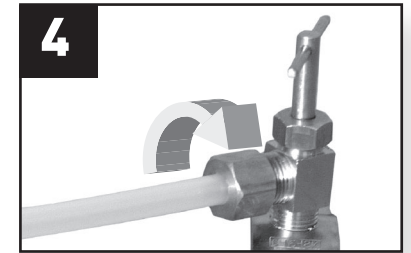
1 Mount the float valve inside the Waterfall Well using the hole provided.



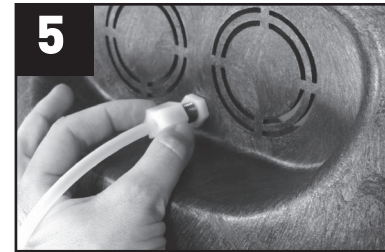
2 Tighten wing nut on float valve so the valve rests at a 180° angle. Attach the thin nylon nut on the outside of housing to secure float valve.



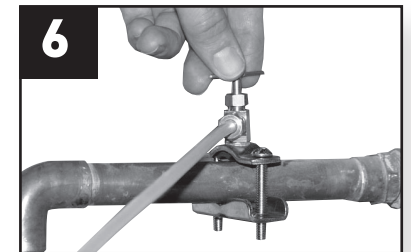
3 Turn off water source. Attach self tapping hose kit to water line. (See instructions included with hose kit.)



4 Attach hose to valve and tighten compression nut.



5 Connect hose to Water Leveler Kit, using large nylon compression nut.



6 Turn on water source and monitor water level to ensure float valve is operating correctly. Start pump to resume normal Waterfall Well™ operation.