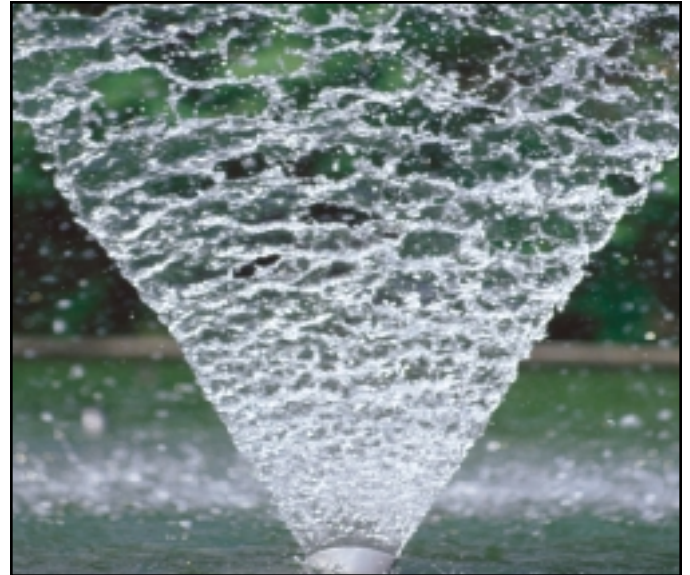


Fan Jet Nozzle



The Fan Jet nozzle creates a particularly compact fan shaped water stream with a thickness of 1/4" and a projection angle of 90°. These nozzles are ideal for creating vertical or obliquely rising water veils. These nozzles can also be used to obscure objects behind them.

The Fan Jet nozzle can be used individually but is especially striking when arranged in groups.



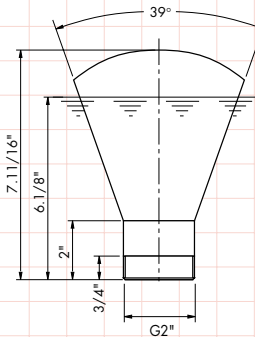
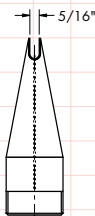
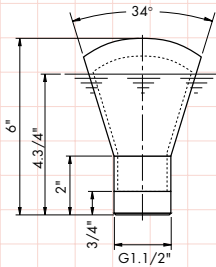
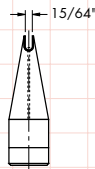
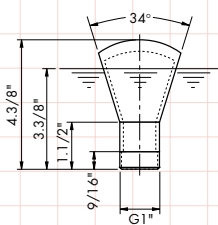
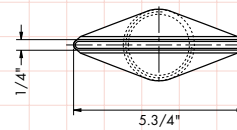
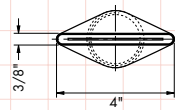
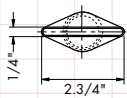
Technical description:

- The Fan Jet nozzle is water level independent and can be located in "dry" areas.
- The Fan Jet nozzle has male BSPPT threads.

Visibility	Red	Red	Red	Red	White
Noise Level	Blue	Blue	White	White	White
Splash	Green	Green	White	White	White
Wind Stability	Yellow	Yellow	Yellow	White	White
Energy Efficiency	Pink	Pink	Pink	Pink	White

Fan Jet Nozzle

Display Height	10-6 E				15-8 E				20-6 E				Display Height
Feet	GPM	TDH	LPM	BAR	GPM	TDH	LPM	BAR	GPM	TDH	LPM	BAR	Meters
0'-10"	18.4	1.3	70.0	0.04									0.25
1'-8"	24.9	2.0	94.6	0.06	37.7	2.0	143.4	0.06	47.9	1.9	181.9	0.06	0.50
2'-6"	30.6	3.3	116.4	0.10	45.9	3.0	174.3	0.09	58.6	2.8	222.5	0.08	0.75
3'-3"	35.5	4.3	134.8	0.13	52.8	4.0	200.5	0.12	67.6	3.7	256.9	0.11	1.00
4'-1"	39.7	5.3	151.0	0.16	58.9	4.7	223.7	0.14	75.6	4.6	287.1	0.14	1.25
4'-11"	43.6	6.3	165.6	0.19	64.4	5.7	244.7	0.17	82.8	5.6	314.5	0.17	1.50
5'-9"	47.1	7.7	179.0	0.23	69.5	6.7	264.0	0.20	89.4	6.5	339.7	0.20	1.75
6'-7"					74.2	7.7	282.1	0.23	95.6	7.4	363.2	0.22	2.00
8'-2"									106.9	9.3	406.2	0.28	2.50
Mat'l	Stainless				Stainless				Stainless				Mat'l
Weight	0.25Kg		0.55lbs		0.49Kg		1.08lbs		0.76Kg		1.67lbs		Weight
Article #	697-560				697-561				697-562				Article #
ID #	53056				53047				53057				ID #
Part #	89042				89043				89044				Part #



Fan Jet Nozzle 10-6 E
89042

Fan Jet Nozzle 15-8 E
89043

Fan Jet Nozzle 20-6 E
89044