



JIGS

PLUGS

SOFTBAITS

OFFSHORE

WHAT TO USE?



- Inline hooks are ideal for casting on jigs of all sizes and shallow water jigging in up to 60' of water.



- Treble hooks are popular on small casting jigs and for shallow water jigging for small groundfish such as porgy and sea bass.



- Bucktail hooks offer an additional length, flash and add extra action to your jigs & plugs.

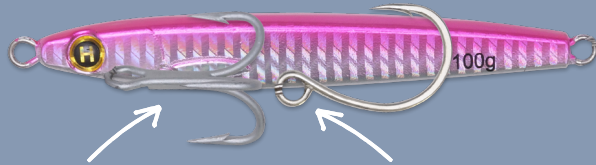


- Assist hook rigging is ideal for jigging with water over 60' deep and for targeting larger gamefish like Striper, Tuna, Grouper and large Snapper.

TREBLE VS. INLINE RIGGING

HOGY EPOXY JIG & METALS HOOK & SPLIT RING PAIRING CHART

JIG LENGTH	IN-LINE VMC	TREBLE VMC	SPLIT RING
1.5" - 2.5"	1/0	6	1MM
2.5" - 3"	1/0	4	1MM
3" - 3.5"	2/0	2	1MM
3.5" - 4"	2/0	1	1.2MM
4" - 4.5"	3/0	1/0	1.2MM
4.5" - 5"	4/0	1/0	1.2MM
5" - 5.5"	4/0	2/0	1.2MM
5.5" - 6"	5/0	3/0	1.4MM
6" - 6.5"	5/0	3/0	1.4MM
6.5" - 7"	6/0	4/0	1.4MM



- Treble hooks should be approximately the width of the side of lure.
- Inline hooks should be wide enough to cradle the lure at it's mid-section.

VERTICAL JIGS

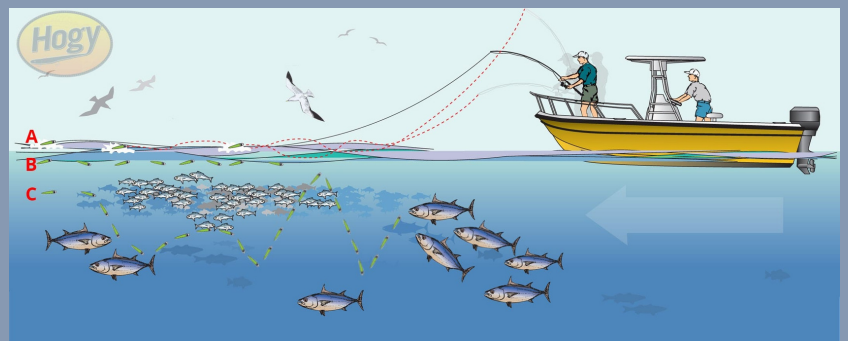
JIG LENGTH	ASSIST HOOK
4" - 5"	4/0
5" - 6"	6/0
6" - 7"	8/0
7" - 8"	10/0
8" - 9"	6/0
9" - 10"	7/0



- Assist hooks should span 1/3 to 1/2 of the lure length.

HOGY PRODUCT SIZE CHART

Product	Split Ring	Treble	Inline	Assist Hook
Flutter Pitch Series				
Flutter Pitch Jig 3.5oz	1.2	NA	VMC 7266 3/0	Assist Hook 4/0
Flutter Pitch Jig 4.5oz	1.4	NA	VMC 7266 4/0	Assist Hook 6/0
Flutter Pitch Jig 6oz	1.4	NA	VMC 7266 5/0	Assist Hook 8/0
Flutter Pitch Jig 8oz	1.4	NA	VMC 7266 5/0	Assist Hook 10/0
Epoxy Jigs				
Epoxy Jig 3/8oz	1.0	VMC-9626PS - 6	VMC 7266 1/0	NA
Epoxy Jig 5/8oz	1.2	VMC-9626PS - 4	VMC 7266 2/0	NA
Epoxy Jig 7/8oz	1.2	VMC-9626PS - 4	VMC 7266 2/0	NA
Epoxy Jig 1.25oz	1.2	VMC-9626PS - 2	VMC 7266 3/0	NA
Epoxy Jig 2oz	1.2	VMC-9626PS - 1/0	VMC 7266 4/0	Assist Hook 4/0
Epoxy Jig 3oz	1.4	VMC-9626PS - 2/0	VMC 7266 4/0	Assist Hook 6/0
Epoxy Jig 4oz Tuna Grade	1.4	7560-T102/OT2	VMC 7266 5/0	Assist Hook 8/0
Heavy Minnow Jig				
Heavy Minnow 1/2 oz	1.0	VMC-9626PS - 6	VMC 7266 1/0	NA
Heavy Minnow 3/4 oz	1.0	VMC-9626PS - 6	VMC 7266 2/0	NA
Heavy Minnow 1.25 oz	1.0	VMC-9626PS - 2	VMC 7266 2/0	NA
Heavy Minnow 2oz	1.2	VMC-9626PS - 2	VMC 7266 3/0	Assist Hook 4/0
Heavy Minnow 3oz	1.2	VMC-9626PS - 1	VMC 7266 3/0	Assist Hook 6/0
Peanut Jig				
Peanut Bunker Jig 1oz	1.2	VMC-9626PS - 4	VMC 7266 2/0	NA
Peanut Bunker Jig 2oz	1.2	VMC-9626PS - 2	VMC 7266 3/0	NA
Herring Jig				
Herring Jig 3.5oz	1.4	NA	VMC 7266 4/0	Assist Hook 4/0
Herring Jig 4.5oz	1.4	NA	VMC 7266 4/0	Assist Hook 6/0
Sand Eel Jig				
Sand Eel Jig 1.25oz	1.2	VMC-9626PS - 2	VMC 7266 2/0	NA
Sand Eel Jig 2.5oz	1.4	VMC-9626PS - 1	VMC 7266 3/0	Assist Hook 4/0
Sand Eel Jig 3.5oz	1.4	VMC-9626PS - 1/0	VMC 7266 3/0	Assist Hook 4/0
Sand Eel Jig 4.5oz	1.4	NA	VMC 7266 4/0	Assist Hook 6/0
Sand Eel Jig 6.5oz	1.4	NA	VMC 7266 5/0	Assist Hook 8/0
Sand Eel Jig 8.5oz	1.4	NA	VMC 7266 5/0	Assist Hook 8/0
Sand Eel Jig 12oz	1.4	NA	VMC 7266 6/0	Assist Hook 10/0
Sand Eel Jig 16oz	1.4	NA	VMC 7266 6/0	Assist Hook 10/0
Squinnow Jig				
Squinnow Groundfish Jig 1.75oz	1.0	VMC-9626PS - 2	VMC 7266 2/0	NA
Squinnow Groundfish Jig 3.5oz	1.2	VMC-9626PS - 1	VMC 7266 3/0	Assist Hook 4/0



(A) Skippy Retrieve: Pop jig on surface with rod tip up.
 (B) Turn and Burn: Tip down, reel as fast as possible.
 (B) Intermittent: Reel + reel + reel + pause (repeat)
 (C) Slow and Low: Tip at 45 degree, slow crank, (best on light jigs).



WHAT TO USE?



Q: Which is easiest to un-hook?

A: A single hook is easiest to unhook. But, if using trebles, you can facilitate the release by mashing the barbs down with pliers.



Q: Which is most successful?

A: All hooks "do the job" to be done but treble hooks are hard to beat in terms of landing ratio.



Q: What's a good teaser for my favorite plug?

A: Bucktail hooks make great teasers by adding length, flash and action to the lure. Bucktail is more durable than using a softbait teaser.

HOGY PRODUCT SIZE CHART

Product	Split Ring	Treble	Inline	Assit Hook
Charter Grade Plugs				
Charter Grade Squid Lure: 4inch	1.4	9626PS 4X-2/0	VMC 7266 5/0	NA
Charter Grade Squid Lure: 5inch	1.4	9626PS 4X-2/0	VMC 7266 5/0	NA
Charter Grade 3.5" Popper	1.2	9626PS 1/0 + 9626PS #2	VMC 7266 5/0	NA
Charter Grade 6" Popper	1.2	9626PS 2/0 + 7266 5/0	VMC 7266 5/0	NA
Charter Grade Dog Walker XL	1.4	TS 2/0	VMC 7266 5/0	NA
Charter Grade Dog Walker 6inch	1.4	9626PS 2/0 + 7266 6/0	VMC 7266 5/0	NA
Charter Grade Slider: 1.5oz - 5inch	1.4	VMC-9626PS - 2/0 4X	VMC 7266 5/0	NA
Charter Grade Slider: 4oz - 7inch	1.4	TS 2/0	VMC 7266 6/0	NA
Charter Grade Slider: 6oz - 7inch	1.4	TS 2/0	VMC 7266 6/0	NA

WHEN TO USE?

- A) A double treble hook configuration is the most popular rigging method for plugs and offers the best hook up ratios.
- B) Two "Single" style hooks are the easiest to "de-hook" but some anglers complain of missed fish.
- C) The "Single/Treble Combo" is a compromise. Some anglers say this configuration enhances the action.

PLUG HOOK PAIRING

PLUG LENGTH	IN-LINE VMC	TREBLE VMC	SIWASH
4" - 5"	3/0	1	N/A
5" - 6"	4/0	1/0	N/A
6" - 7"	4/0	1/0	6/0
7" - 8"	5/0	2/0 - 3/0	6/0
8" - 9"	6/0	2/0 - 3/0	7/0
9" - 10"	7/0	3/0 - 4/0	7/0

A

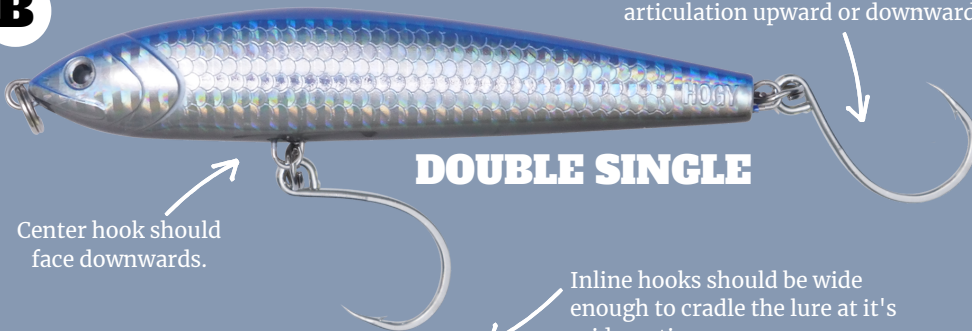


Treble hooks should be approximately the width of the side of lure.

DOUBLE TREBLE

Treble hooks should be about as wide as the lure body.

B



Inline sytle hooks offer perfect articulation upward or downward

DOUBLE SINGLE

Center hook should face downwards.

Inline hooks should be wide enough to cradle the lure at it's mid-section.

C



SINGLE / TREBLE

The single / treble combo is an angler favorite for better hookups and easier releases.



Bucktail hook adds extra flash, length and action to your favorite plugs.

BUCKTAIL HOOKS

JIGS

PLUGS

SOFTBAITS

OFFSHORE

RIGGING VIDEOS



BODY STYLE

EELS: Use to imitate live eels, slender baitfish and sand eels.
PADDLES: Use to attract scattered gamefish with tail vibrations or to imitate larger baitfish.

SOFTBAIT RIGGING

(A) Soft Circle: Topwater

PROS: Amazing action, super easy to rig. Simply screw the bait in. **CONS:** Can miss smaller fish.

(B) Swimbait Hook: Midwater

Often lightly weighted, this hook is typically known for a subsurface presentation. **PROS:** Weed Resistant, keels bait, aids with casting. **CONS:** Requires more rigging maintenance.

(C) Jig Head: Bottom

Best for deep water or near-bottom presentation. **PROS:** Easy to rig. **CONS:** Limited to a deeper presentation.

SOFTBAIT RETRIEVES



Softbaits can be fished in a similarly to casting jigs (see page 1). Or visit hogylures.com/retrieves

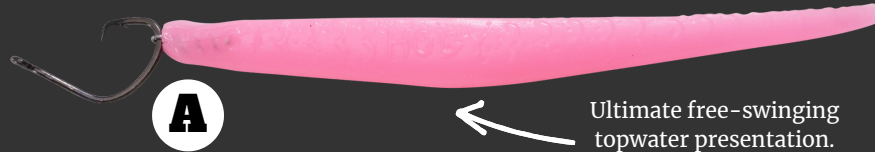
SOFTBAIT RIGGING CHART

LURE SIZE	JIG	SWIMBAIT	CIRCLE
7"	6/0	6/0	4/0
8"	10/0	10/0	6/0
9"	10/0	10/0	6/0
10"	10/0	10/0	6/0
14"	10/0	12/0	6/0

DEPTH CHART

DEPTH	RIGGING
SURFACE	SOFT CIRCLE
SUBSURFACE	SWIMBAIT HOOK
5' - 10'	1/2OZ JIG HEAD
10' - 20'	1OZ - 2OZ JIG HEAD
20' - 30'	2OZ - 3OZ JIG HEAD
30' - 40'	3OZ - 4OZ JIG HEAD
40' +	4OZ + JIG HEAD

**TOPWATER:
SOFT CIRCLE**



**MID-WATER:
SWIMBAIT HOOK**



**BOTTOM:
JIG HEAD**



PRE-RIGGED VS RIG YOUR OWN

RIG YOUR OWN:

PROS: Allows for customization of presentation and may be more economical if you can repair baits. **CONS:** Requires periodic rigging and "maintenance" throughout the day.

PRE-RIGGED:

PROS: Easy to use, swims perfectly out of the package and more durable. **CONS:** You are limited to the "built in" action that is not customizable.

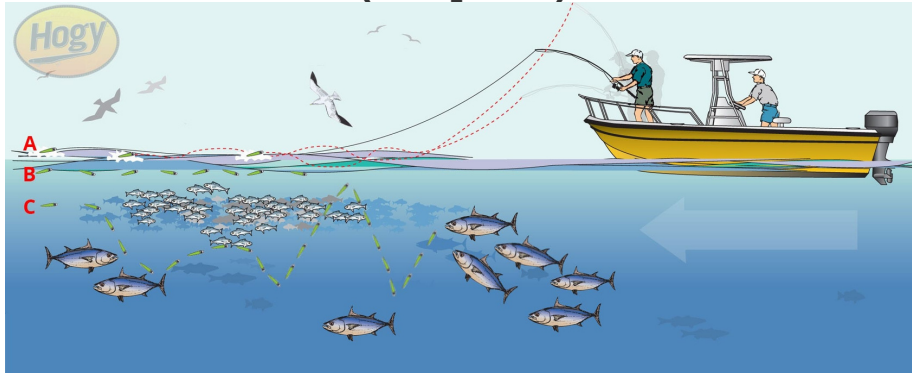


COLORS CHOICES

COLOR	WHEN TO USE
BONE	All purpose color. The "If you could only have one color" color.
PINK	Bright conditions. Excellent squid imitator.
OLIVE	Natural color that imitates many baitfish species.
GREEN / CHART	Excellent daytime & dirty water color. Imitates mackerel.
BLACK	Nighttime color as black contrasts against the dark sky. Imitative of live eels.
BLUE	Multi purpose color, imitative of herring and pilchards along with many other baitfish.
SILVER	Excellent low light color. Imitates mullet.



Three Basic Casting Retrieves (All Species)

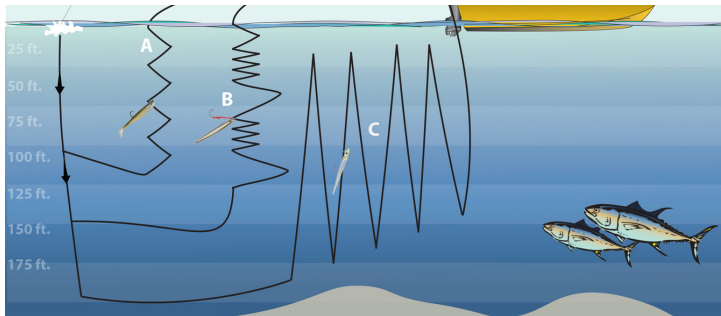


(A) Fast Skippy Retrieve: This is a tip-up, fast-crank retrieve. Great for imitating fleeing sea herring, half beaks and mackerel. This is the preferred retrieve to breaking fish or blind casting in calm water when you know fish are in the area.

(B) Reel-Reel-Reel-Pause / Reel-Reel-Reel-Pause: I like to alternate this retrieve with the skippy retrieve. It is similar in that it is a very high-speed retrieve but opposite in the sense that your rod tip is pointed low –literally in the water. This will allow you to have a very high retrieve speed without breaking the surface.

(C) Drop and Reel: This retrieve starts with the medium sub-surface retrieve but this time, you will introduce long pauses for up to a minute to let your bait settle as deep as 30’ before reeling again. This is an excellent retrieve for finicky fish.

Three Basic Jigging Retrieves (All Species)



(A) Slow Jigging: We think slow jigging is the most effective way to jig with softbaits. **WHEN:** This is a go to technique when fish are consistently hanging at a certain depth or are slow to commit. **HOW:** Drop the the lure to the desired depth (likely where you are most consistently marking fish) and work the bait as slowly as possible. You can even dead stick a softbait by putting the rod in the holder and use the boat’s rocking motion to work the lure. **WHY:** This method will best utilize the slow undulating action of the soft plastic and will also keep the lure in the strike zone.

(B) Twitch Jigging: Works well with Hogy Epoxy Jig Lures and slender metals that imitate sand eels AND Softbaits **WHEN:** Targeting a specific depth with scattered fish. **HOW:** Drop the the lure to the desired depth and “twitch” the jig with a series of sharp and rapid jigs, almost as if to “twitch” the jig. **WHY:** This method will create vibrations and commotion caused by your lure’s twitching motion. Will help draw attention to your lure.

(C) Fast Jigging: Fast jigging is best used with heavy metals that sink fast. **WHEN:** Targeting fish across a wide spectrum in the water column, **HOW:** Drop the lure to bottom and work it back up by reeling quickly while imparting jigging motions with the rod as the lure comes up. Once close to the surface, drop and repeat. **WHY:** This method will cover all levels in the water column, create commotion and will elicit a reactionary “FOMO” strike by a predator.

TUNA RIG LIKE A PRO

Everything comes down to a solid connection when target trophy tuna. Here's how to rig your own bullet proof leader to lure connections.

"Paint" your crimp black with a sharpie.



CRIMPED LOOP CONNECTION

The best rigging connection on heavy leaders 80# and up.

.5" Black Chafe Loop
130# Fluoro Leader
1.3mm Aluminum Crimp

220# Crane Swivel
220# 1.4 Split Ring

KNOTTED CONNECTION

For rigging with light leaders 80# and less.



220# Crane Swivel
220# 1.4 Split Ring

80# Fluoro + Palomar Knot

OFFSHORE RIGGING

Tackling the largest of offshore gamefish requires a keen eye to details and perfection in rigging technique. Hogy's full lineup of offshore terminal rigging allows you to quickly build or repair your offshore presentations.

HOGY CRIMP PAIRING CHART

LINE # TEST	CRIMP SIZE
#80 MONO	1MM
#80 FLUORO	1.2MM
#100 MONO	1.4MM
#130 FLUORO	1.3MM
#130 MONO	1.4MM
#150 MONO	1.6MM
#200 MONO	1.8MM

PRO TIPS: CRIMPING

- 1.Reduce crimp visibility by coloring with a black sharpie marker.
2. Eliminate unnecessary break offs by leaving a 1/16" flange along crimp edges when crimping
3. Measure line diameter to crimp size. Improper pairing of line to crimp size will greatly reduce strength and reliability
4. Use the proper style chafe gear for connections. Black Chafe for leader loops. Stainless Chafe for hook connections.