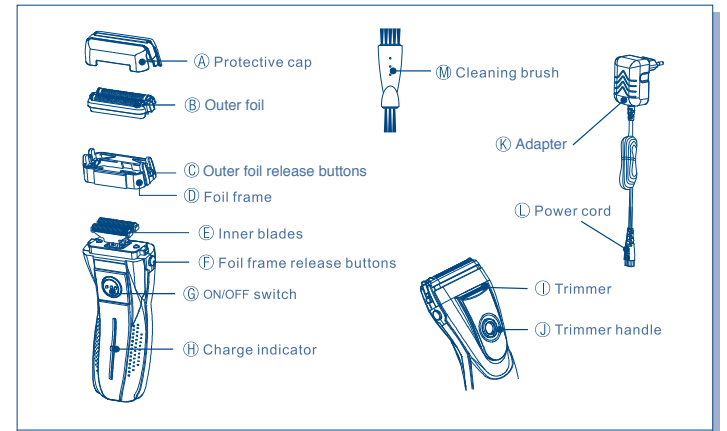


WARNING:
DO NOT SUBMERGE SHAVER IN WATER.
MAKE SURE ONLY THE SHAVER HEAD AND
BLADES GET WET.



Charging and cordless shaving

NOTE: When using the shaver for the first time, charge it for 12 hours.

Connect the charger to the bottom of the shaver and plug into a power socket. Charge the shaver for 8 hours. To prolong the service life of the shaver, make sure the battery is drained before recharging.

Do not overcharge the shaver as it will damage the batteries and affect service life.

Using your shaver (Fig. A)

Push the ON/OFF switch to turn the shaver on. Hold the shaver at a right angle (90°) to your skin. Start out shaving by applying gentle pressure to your face. Stretch your skin with your free hand and move the shaver back and forth in the direction of your beard. You may gently increase the amount of pressure as your skin becomes accustomed to this shaver. Applying excessive pressure can not provide closer shave, or may cause injury to your skin. You may also use this shaver with shaving cream for a wet shave.

Do not submerge the shaver in water. Make sure only the shaver head and blades get wet.

Using the trimmer (Fig. B)

Slide the trimmer up to use the trimmer. Place the trimmer at a right angle to your skin and move it downward to trim sideburns.

Outer foil (Fig. C)

The shaver has two outer foils. They move up and down independently to follow the contours of your face.

Cleaning your shaver (Fig. D-G)

Warning: To prevent electric shock or personal injury, make sure the charging cord is disconnected from the shaver.

Do not submerge the shaver in water. Make sure only the shaver head and blades get wet.

We recommend that you clean your shaver with water and liquid hand soap. Regular cleaning will keep your shaver in good condition while preventing odors or bacteria from developing, and will maintain the cutting performance.

With the outer foil in place, apply some hand soap onto the outer foil. Turn the shaver on and pour water over the outer foil.

After about 10-20 seconds, turn the shaver off. Remove the foil frame by squeezing the outer foil release buttons and clean it with running water.

Wipe off any moisture from the shaver with a dry cloth and remove the protective cap to allow the outer foil to dry completely.

Brush cleaning your shaver (Fig. H-P)

Squeeze the outer foil release buttons and lift the system outer foil upward to remove it. While pressing the release buttons, remove the inner blades one at a time by grasping it firmly at both ends and pulling it straight away from the shaver. Clean the outer foils, inner blades, the shaver body, and the trimmer with the long brush. Snap the inner blades and outer foils back into place.

Replacing shaving head components

It is recommended that you replace the system outer foil at least once a year and the inner blade at least once every 2 years to maintain your shaver's cutting performance.

For environmental protection and recycling of materials

This shaver contains Nickel-metal hydride batteries.

Caution

Do not charge the shaver where the temperature is below 0°C (32°F), where it will be exposed to direct sunlight or a heat source, or where there is a lot of moisture. Use only the included adapter.

Dry the shaver completely before charging it. Keep the adapter away from water and handle it only with dry hands. Grip the adapter when disconnecting it from an AC outlet, tugging on the power cord may damage it. Store the adapter in a dry area where it will be protected from damage.

Do not pull, twist, or severely bend the power cord. Do not wrap the power cord tightly around the appliance. The outer foil is very thin, if handled improperly, it can be easily damaged. To avoid personal injury, do not use the shaver if it has a damaged foil or inner blade.

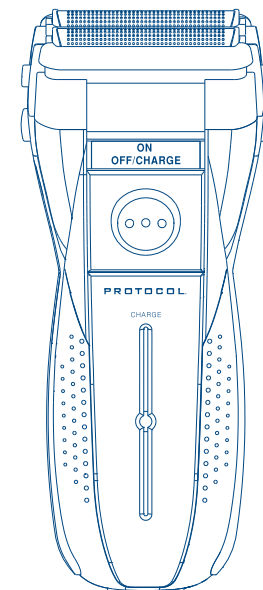
Wash the shaver in tap water. Do not use salt water or boiling water. Also do not use cleaning products that are designed for toilets, bathrooms, or kitchen appliances. Do not submerge the shaver for a long time. Do not wipe any part of the shaver with thinner, benzene, or alcohol. Clean it by using a cloth dampened with soapy water. Do not take the housing apart as this can affect the watertight construction. Do not clean with water when the shaver is connected to the power cord. Keep the unit away from children. Keep instructions in a safe place.

Specifications

Rated input: 110V 60HZ
Rated output: DC 3V, 150mA
Recharge time: 8 hours
This product is intended for household use only.

PROTOCOL®

Operating Instructions



Read through this entire instruction manual before using the Wet/Dry Dual Foil Shaver. We're dedicated to bringing you well-designed products that make living fun and easy. We stand behind all our products and warrant this to be free from defects in workmanship and materials for 1 year from the date of purchase.

For service claims or questions please consult our website ProtocolNY.com.