

**ELEVATION VIEW ALUMINUM CANTILEVER GATE
OUTSIDE LOOKING IN**
TRACK FAR SIDE

SPECIFICATIONS
Aluminum Cantilever Gate
10-25-16 Update

As manufactured by America's Fence Store, Incorporated, we certify that the aluminum cantilever gate shall conform to the following specifications: FS RR-191/2D Type III & IV, ASTM F 1184-88 and ASTM F 2200 as it relates specifically to the gate construction.

Fully Fabricated Gate: The gate shall be fully shop fabricated in its largest possible sections. All gate frames, supports and tracks are to be joined by welded connections.

Materials: The frame(s) and track(s) are to be fabricated from aluminum extrusions (6063-T6). Single track applications provide an upper track that weighs 5.15# / foot. Double track applications provide an upper track that weighs 11.916# / ft. The vertical and bottom track shall be a minimum of 2" x 2" x 1.12# / foot (6063-T6) aluminum extrusions. The diagonal bracing shall be a minimum of 1" x 2" x .808# / foot (6063-T6) aluminum extrusions. For openings greater than 20', the bottom track shall be a minimum of 2" x 5" x 3.12# / foot.

Fabric: The chain link fabric shall be identical in gauge, mesh, coating and salvage as that used on the balance of the fence project. If the gate stands alone than the fabric shall be specified.

Design: The vertical supports of the gate shall not be spaced greater than six feet on center and will not exceed the height of the gate. The tail section of the gate shall be fully "X" in sections not to exceed six feet on center.

For openings greater than 20' bottom rail shall be 5" x 2" or 4" x 2" in lieu of 2" x 2". The tail section of the gate shall be fully "X" and "H" in sections not to exceed six feet on center. If required, trussing may be established by 3/16" galvanized cable in "X" pattern throughout the opening and tail section of the gate. All cable assemblies will be equipped with field adjustable tension devices.

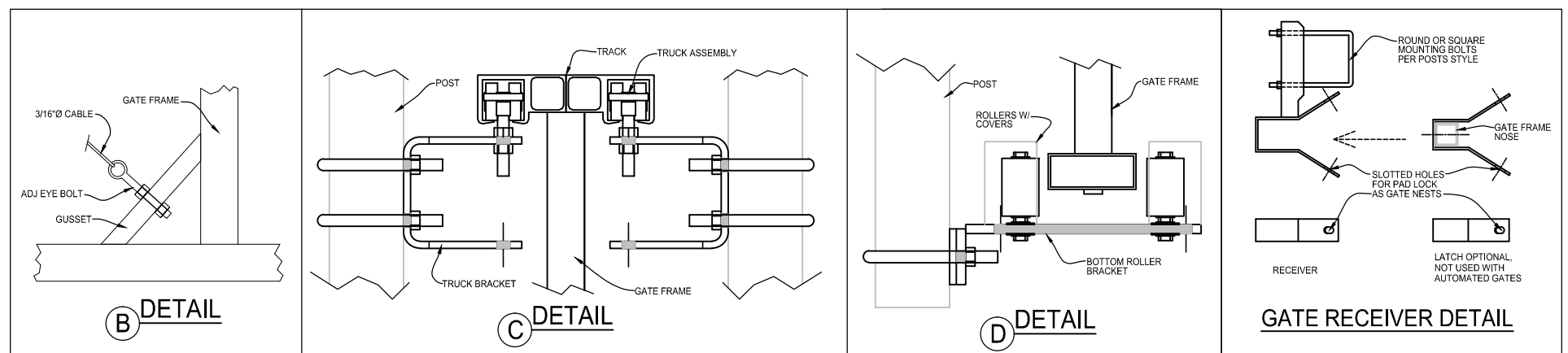
If required, barbwire arms will be welded or bolted on top of the gate track not to exceed ten feet on center. The fabric shall be held in place by tension bars, tension bands and bolts. Barbwire shall be held in place by end bands and bolts.

The gate shall traverse by means of 2 heavy duty aluminum, internal type upper tracks. Each track shall be welded to the gate frame. Slide gate tracks/trolleys are to be bolted to track hanger brackets located at each of the gate mounting posts.

Lower guide roller assemblies with protective pinch point covers are to be mounted near the bottom of the gate mounting posts to keep the bottom of the gate in place. Lower guide rollers shall be of nylon construction.

Track/Trolley assemblies and hanger brackets shall be stainless steel. Each trolley shall be a 6 wheel unit (4 vertical wheels and 2 horizontal guide wheels), constructed of a 1 piece machined steel body, factory lubricated, with sealed bearings and a 5/8" diameter heat treated mounting bolt with an aircraft lock nut and an adjustable 4-way mount. The track shall be fitted with physical stops.

CRITICAL DIMENSIONS			
	DESCRIPTION	FORMULA	DIMENSION
"A"	CLEAR OPENING	A	
"B"	COUNTERBALANCE	A/2	
"C"	OVERALL GATE LENGTH	A + B + 12"	
"D"	TOP OF GATE HEIGHT	D	
"E"	POST HEIGHT	E	
"F"	PICKET PROJECTION	F	
PICKET SIZE			
ADJOINING FENCE HEIGHT			
BARB ARMS REQUIRED		YES	NO
GATE STORAGE IN OPEN POSITION (OUTSIDE LOOKING IN)		LEFT (SHOWN)	RIGHT



AMERICAN FENCE COMPANY

ORNAMENTAL OVER SCALLOP CANTILEVER
(1) SINGLE TRACK ALUM. CANT. GATE
CLASSIC