



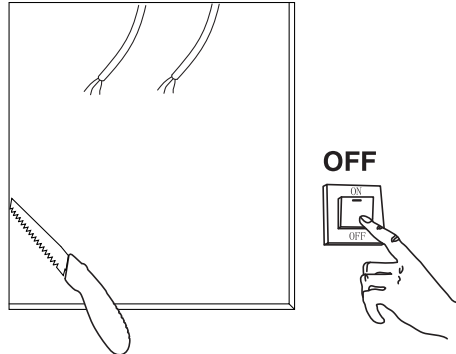
1 ROUGH-IN INSTALLATION:

Adjust the SeeLess black perforated aluminum brackets, to either 1/2", 5/8", or 3/4" line. Caddy bars are recommended for easy mounting between studs (*not supplied by SeeLess). Verify studs are leveled, so that the platform is leveled with the drywall. Flat-headed screws are recommended (Pre-drill SeeLess brackets for rounded screws). *Don't over screw when using a power drill to avoid cracking the gypsum.

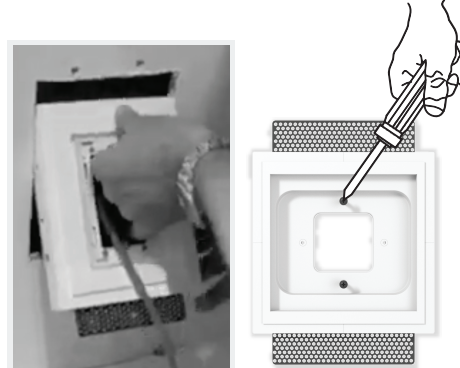


2 POST INSTALL DRYWALL INSTALLATION:

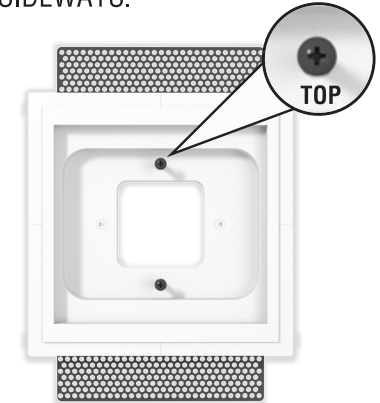
Cut in drywall around the platform in the desired location. Level the drywall with the lower line of the joint on the front of the gypsum platform.



3 Adjust the SeeLess black perforated aluminum brackets, to either 1/2", 5/8", or 3/4" line.
Insert SeeLess platform at an angle.

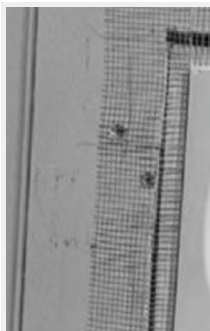


4 *ATTENTION: make sure to install the platform upward to position the screw openings on the mount at the top and bottom. DO NOT INSTALL SIDEWAYS.



5 Cover the inside of the platform with paper or tape to protect the center opening. Apply the fiberglass tape on all four joints around the platform. Patch with drywall compound. Sand surface smooth. Apply one

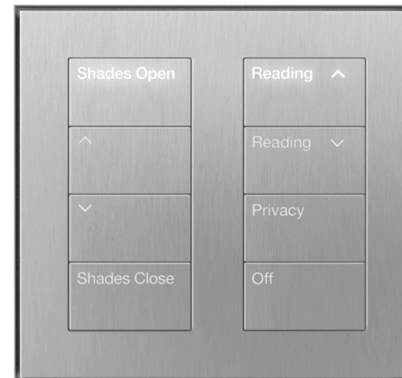
coat of primer and wait for it to dry. Apply two coats of paint (it is recommended that you paint inside of the opening).



6 Double-Column Lutron International architectural style Palladiom plate comes with 2 backplates. Make sure to use the **black** back plate to adapt to SeeLess mount.



7 Install the device.



8 SeeLess suction cups are available to remove the faceplate.

