

# *B R I T I S H* *C U S T O M S*

18426 South Broadway  
Gardena, CA 90248  
Toll Free: +1 (877) 999-BRIT support@british-customs.com  
[www.british-customs.com](http://www.british-customs.com)

## ***BONNEVILLE BOBBER / SPEEDMASTER***

### *Predator Pro Slip-On*



*You must know how to remove and replace your stock exhaust in order to install this product otherwise have it installed by a professional mechanic. Keep all stock parts from your existing system as some components may be necessary to install your new British Customs exhaust depending on the application. Read through all instructions before beginning installation. Exhaust system can be extremely hot. Let motorcycle cool down before beginning installation. Always wear hand and eye protection and take precautionary measures to avoid injury.*

*Tools Required:*

*10mm Wrench  
12mm Wrench  
12mm Socket  
5mm Allen*

*8mm Allen  
Torque Wrench  
Microfiber Towel  
Rubbing Alcohol*

**CAUTION:** Exhaust system can be extremely hot. Let motorcycle cool down before beginning installation. Always wear hand and eye protection and take precautionary measures to avoid injury.

**WARNING:** Always properly support vehicle with a stand and/or lift when servicing or performing any work.

Unstable vehicles may present dangerous conditions and may cause property damage and/or personal injury.

**NOTE:** Read through all instructions before beginning installation.

## Removal

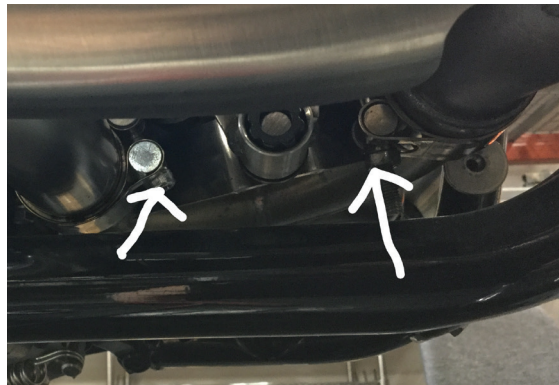
---

**Note:** Removal is very similar for left and right side of motorcycle.

1. Use 12mm socket to slightly loosen the head pipe flange nuts.



2. Loosen the Four (4) clamps on the catalytic converter with 10mm wrench.

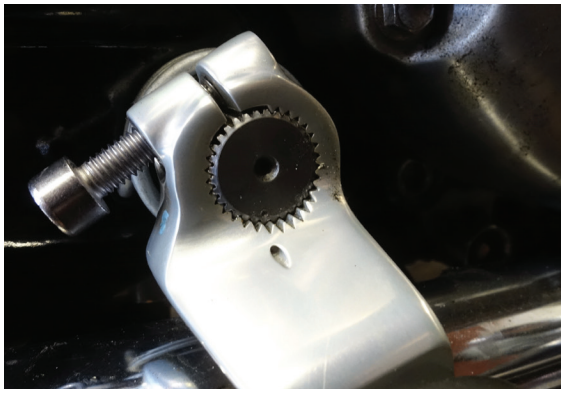


3. Use 5mm allen to remove the heat shield clamp bolt. (On the left hand side, remove the heat shield mid-section.)



4. On Streetmaster Models, Use 5mm allen and remove the Rear Brake Lever Clevis Bolt and slide clevis off shaft. Gently move clevis and linkage out of the way.





5. Use 12mm wrench to remove the rear mounting bolt on the underside of the silencer.



6. Gently pull the right side heat shield from the tail pipe until it snaps free.



7. Pull Silencer outward, away from the motorcycle, until it is free from the catalytic converter and rear mount bracket. Swing silencer end down and remove from motorcycle.

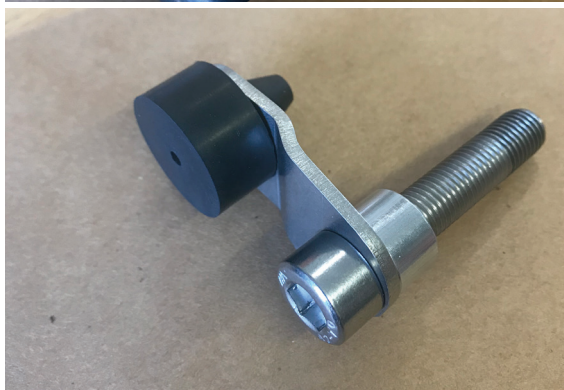


8. Use 12mm socket to remove the rear muffer mounting bracket.

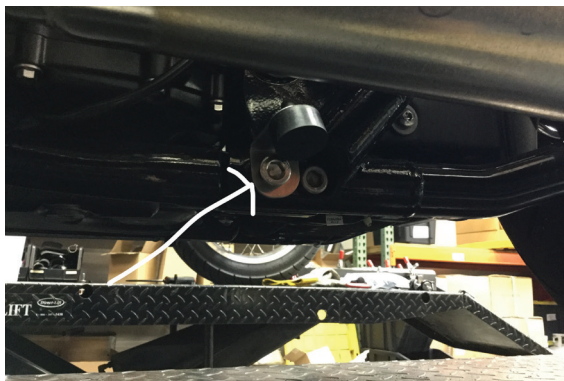


## Installation

1. Assemble British Customs kickstand bracket as shown. Rubber stopper goes in smaller hole on the lower side of the bend.

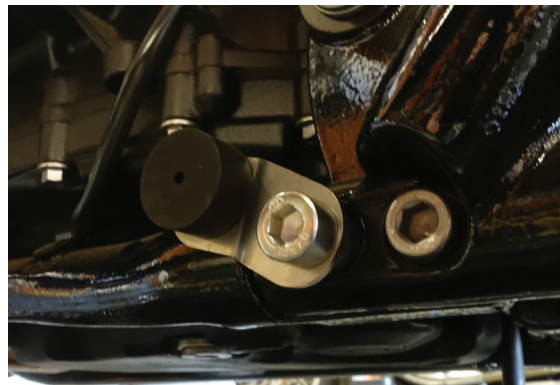


2. Use 8mm allen and remove the front bolt of the rear cradle mount on the left side of the motorcycle.



3. Place kickstand stopper bracket into position and secure with supplied 8mm allen.

frame > spacer > bracket > bolt



4. Cycle the kickstand to get the bracket into proper position, then tighten and torque to **40 Nm. (30 ft-lb)**

**Note: Predator Pro Installation is relatively the same for each side.**

5. Install Predator Pro onto catalytic converter, taking care not to damage gaskets in catalytic converter.





 **PRO-TIP**

*It's easier to install exhausts with the back-end hanging down, then swinging it up into place.*

6. Lift Predator Pro up into place and reuse 10mm bolt from factory rear mounting bracket to secure Predator Pro to the frame. Do not tighten at this time.

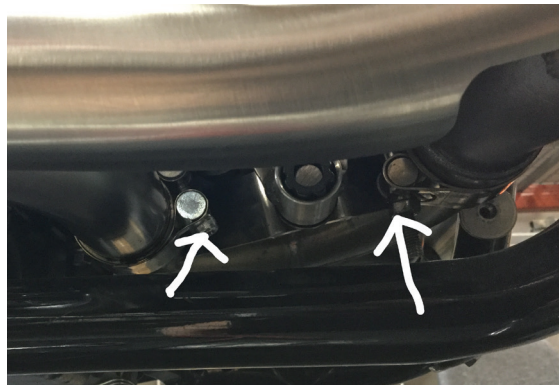


**\*Note orientation of the mounting bracket. Slotted part should be at the top.**

7. Use 12mm socket to tighten head pipe flange nuts and torque to **19 Nm (14.0 ft-lb)**



8. Tighten clamps on catalytic converter to **8 Nm. (70 in-lbs)**  
**NOTE INCH-POUNDS**



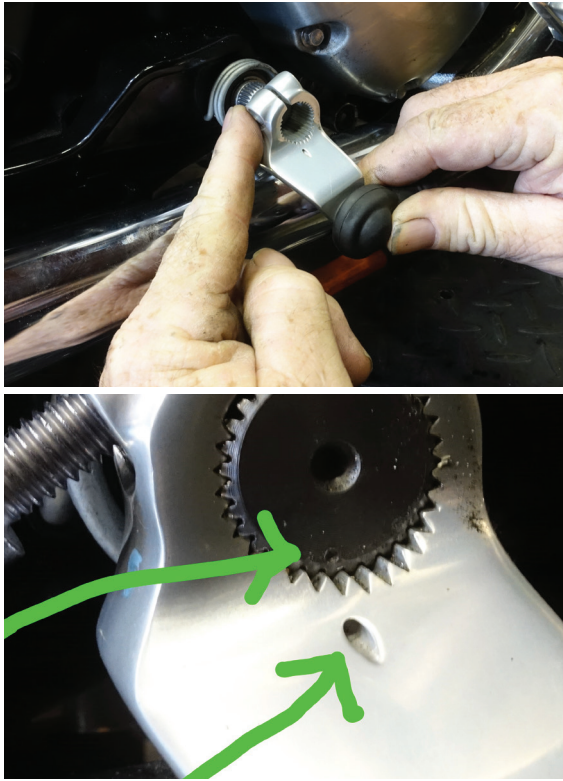
9. Install heat shield to tailpipe. Tighten clamp firmly with 5mm allen and torque to **9 Nm. (80 in-lbs)** **NOTE INCH-POUNDS**



10. Go to rear mount and tighten rear mounting bolt with 12mm wrench to approx to **19 Nm (14.0 ft-lb)**



11. Reinstall Rear Brake Clevis onto shaft. There is dot on the shaft and hole in the clevis to ensure proper alignment.



12. Use 5mm allen and torque Rear Brake Clevis bolt to **5 Nm (16.0 ft-lb)**

Before starting motorcycle, check for proper clearance between new exhaust system and rear suspension (i.e. tire, swing arm, brakes, rear shock, and etc.) If any problem is found, please carefully follow through the installation steps again. If problem still persists, please call **British Customs Customer Support at (877) 999-2748.**

The muffler and tailpipe should be wiped down with rubbing alcohol to remove oil and fingerprints before starting the motorcycle. This will help prevent tarnishing of the finish after the exhaust is heat up.